



Mc Cumber cows have the do-ability to survive North Dakota winters. Shown here winter grazing in mid-December, note the capacity and body condition of our cows. The two young cows on the right are 4X13 daughters that weaned their first calves this fall. Calving ease, fertility, do-ability, and convenience traits like mothering, udders, and soundness are bred in. Generations of selection for these traits can be purchased on March 23, 2011.



Mc Cumber Angus Ranch Bull Sale March 23, 2011

Selling 110 yearling angus bulls

For a catalog or more information contact: Chuck 701/246-3366, Matt 701/246-3847 or email mccumber@utma.com
Web site: www.mccumberangus.com



8675 37th Ave
Rolette, ND 58366



Postage
Pd.



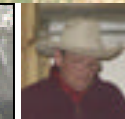
Sinclair Extra 4X13 daughters after raising 1st calf

The fall sale season for weaned calves is in full swing right now for many of our customers. We are receiving reports that calves sired by Mc Cumber bulls are constantly topping the market. One group of 800 lb weaned steer calves brought \$121.50. That was over \$5.00/hundred over the next best of the day. Forty dollar premiums on a couple of pot loads of steers adds up. The feed lots are only willing to pay that kind of premium on a load of calves when they know they will feed and grade well. The ranch I am referring to has constantly topped the market when their calves sell and has used mostly Mc Cumber bulls for fifteen years. They have purchased from among the best bulls offered at Mc Cumber.

We need cattle that will command these kinds of premiums and also cattle that have the do ability to rustle for forage when the snow gets deep in order to maintain a profit in this era of high costs. Our cows know how to dig through snow to find forage. They will be managed like that until they are within a month or six weeks of calving. At that time we will start to supplement their grazing to meet their nutritional needs in the last trimester before calving.

The cows and heifers pictured here have not come in for water for three weeks, but have been grazing and using snow for moisture. Water is available, but they have not come to the ranch looking for water. The condition that they stay in amazes me. This is exactly the fleshing ability and do ability that we look for!

When we purchased Sinclair Extra 4X13 we were confident that he would sire the kind of



Notes from Mc Cumber



cattle that we wanted to continue to produce; moderate framed cattle that are correct on their feet and legs and cows that are good mothers with excellent udders, with the capacity and ability to flesh on a high forage diet. We have produced and used many sons of 4X13 back in the herd with excellent results. Today, many of the females that are here at Mc Cumber are daughters of 4X13 and are living up to our expectations and beyond. They have the ability to forage and maintain their body condition in less than ideal conditions. They have weaned calves, weighing over 700 lbs with no creep feed as first calf heifers; that is well over 50% of their body weight in many cases.

The sons of 4X13 are calving ease bulls that consistently sire calves that are born easily and get up and nurse quickly.



There will be many bulls sired by 4X13 and some of his best sons, or out of 4X13 daughters that will be in our bull sale on March 23, 2011. These bulls will offer an excellent opportunity to get the influence of 4X13 in your herd to improve the do-ability of your cowherd and the demand for your feeder calves.

The high ratioing sire group at weaning this past year was sired by Mc Cumber 4X13 Extra 829. He was the lot 1, and one of the top selling bulls in our 2009 bull sale going to Joe Wight in Idaho. The 829 calves continued, after weaning, to gain well. They are wide topped, have abundant muscle and stand on a wide base. His grand dam is Miss Wix 2027 of Mc Cumber, who sold to Ox Bow Angus in Montana, managed by Ken Cook. She was

one of the very best females here at Mc Cumber, backed by six consecutive generations of pathfinder cows, and a leading donor for us. My favorite yearling heifer is a 4X13 out of 2027. The heifers sired by 829 are also very feminine, clean through their throat latch, long, deep bodied and have correct feet and leg structure. Be sure to find the sons of "829" at our sale, you will like them a lot.

We have an even larger sire group of calves sired by OCC Tremendous 619T then we had last year. He is an Emblazon son out of an Anchor daughter who in turn is out of an EXT daughter. They are light birth weight bulls that are deep and thick. The Tremendous 619T calves were the second high ratioing weaning group this past fall, with many being out of 4X13 daughters. The Tremendous yearling heifers are feminine, very deep bodied, with excellent feet and legs. It appears that they will have a neat udder, with small well placed teats, with superb attachment both fore and rear..

We will also offer a good group of calves sired by OCC Missing Link and OCC Paxton. Their phenotype is the same as Tremendous and will also be light birth weight bulls that can be used on heifers to produce their first calves without assistance. These are cattle that have been selected to do well on a strictly forage ration.

We are very proud of the success of the Angus Partners Female sale. This is a sale that we co-sponsor. It offers our customers a venue to market their heifer calves and bred heifers that are sired by or bred to Mc Cumber bulls. In this way we have helped our customers market their outstanding heifers.

We hope to see you at our bull sale on March 23, but if you cannot be here, the sale will once again be broadcast by Superior Livestock Marketing on RFD-TV. Matt or I would like to help you select the bulls that fit your needs. Let us know if we can help in any way.

Chuck and Matt



Sinclair Extra 4X13

The highest marbling son of EXT produced by Sinclair Cattle Co. 4X13 traces 38 times to Emulation 31 and is backed by 8 generations of calving ease dams. 4X13 is the most consistent sire of calving ease and phenotype, bar none, that we have ever used. Sons are moderate framed, long, deep bodied with a wide stance and correct hoof and leg structure. They are consistently the top IMF bulls in the pen. His daughters are beautifully patterned cows with beautiful udders. They are feminine and clean through their throat latch, with length and depth of body in a moderate frame. They have excellent mothering instincts. They want to have a calf, get it up and nursing quickly. 4X13 daughters raise many of the top nursing ratio calves year after year. A complete bull that has produced many sons that are herd bulls here at Mc Cumber and for other breeders around the country. Many sons and grandsons will sell March 23, 2011 at Mc Cumber.



Sitz JSL Emulation EXT 536P

An EXT son and out of 4465 who is a daughter of 6807. 536P is a long bodied, thick, structurally correct herd bull.



Mc Cumber 536P EXT 8199

Typical of the 536P sons. Long bodied, deep sided and thick. Standing on a wide base with correct feet and leg structure. The daughters of 536P are very feminine and broody with excellent udders.



Calving ease

Fertility

Correct Foot and Leg Structure

Mc Cumber 4X13 Extra 829 A grandson of Miss Wix 2027 of Mc Cumber who was lot 1 in the 2009 Mc Cumber bull sale. Owned with Wight Angus in ID. 829's first sons will sell on March 23, 2011



Mc Cumber 4X13 Extra 751 is out of Miss Wix 5139 of Mc Cumber, sired by 24J, and is a granddaughter of Miss Wix 365 of Mc Cumber. 751 is a calving ease sire. Owned with Nelson Angus, ID.

Feminine daughters



Excellent mothering ability

Easy fleshing

High marbling

Mc Cumber 4X13 Extra 718 A grandson of Miss Wix 2022 of Mc Cumber that was the top selling bull in the 2008 Mc Cumber bull sale. Owned with Currant Creek Angus and U Cross Ranch in MT.

Moderate framed



Mc Cumber 4X13 Extra 975 is an exciting son of 4X13 and out of B Pride 463 of Mc Cumber who is a granddaughter of Right time. 975 was our Lot 1 bull in 2010 selling to Haugen Angus, ND



OCC Tremendous 619T

Sired by Emblazon and out of an Anchor dam with an EXT maternal grand dam. Genetics that work for the grass feds.



Mc Cumber Tremendous 9191

9191 is typical of the type of cattle that Tremendous sires. Very deep and thick with correct feet and leg structure. Tremendous is a calving ease sire.



OCC Missing Link 830M



Mc Cumber Missing Link 911

A Missing Link son that exhibits the depth, thickness and power that Missing Link sires. Missing Link is a calving ease sire.