



Selling 110 Angus Bulls



March 23, 2011

1:00 P.M.

At the Ranch

1 Mile West of Rolette, North Dakota

McCumber *Angus* Ranch



The cow herd known for Outstanding maternal traits.

Chuck and Gail Tastad
Phone/fax 701/246-3366
Email: mccumber/utma.com
Web site:
www.mccumberangus.com



*Matt, Cynthia,
Sydney, Eva, Nate & Brett Tastad*
Phone/fax 701/246-3847
Web site:
www.mccumberangus.com

Dear Cattle Producers,

We would like to welcome you to our Annual Bull Sale, and thank you for your continued support of our program. As a seedstock producer it is our job to provide you with genetics that will help add to your bottom line. We take our job as a seedstock producer very serious, and consider it a privilege to be your source of seedstock. We hope that we can continue to earn your business.

This is our 47th continuous year in the registered Angus business. We continue to focus our program around producing profitable cattle for commercial cattlemen around the country. It has been an exciting winter in the beef cattle business. We have seen record prices paid for feeder cattle, replacement females, and bred heifers. However, the cost of production continues to rise as well. That is why it is important to produce cattle that can efficiently convert forage into lbs. It all starts with a fertile, low maintenance cow herd. For 47 years it has been our intentions to breed cattle that are fertile, moderate framed, easy fleshing, and problem free. We expect our cows to raise a calf every year. They must calve easy, be good mothers, have a neat, well attached udder, be sound structured, and milk enough to raise a good, healthy calf. It is our goal to optimize production, not necessarily maximize it.

Once again the sale will be broadcast live on RFD-TV by Superior Productions. There will be a video of each bull available either on the Superior Livestock website or by requesting a DVD prior to the sale by either contacting us or Superior. If you are interest in participating in the sale through Superior Productions you may contact them anytime prior to the sale by calling 1-800-431-4452.

As always, all the performance information is provided in the catalog. The bulls will be semen tested, and srotal measurements will be available after March 3. If there is any other information you would like please contact us anytime. We stand behind the bulls 100% and want to know if you have any problems with them. The bulls are available for viewing anytime prior to the sale here at the Ranch.

Sincerely,
Matt and Chuck Tastad

Contact McCumber

Chuck & Gail Tastad701.246.3366

Matt, Cynthia,

Sydney, Eva, Nate & Brett Tastad701.246.3847

8675 37th Avenue Rolette, ND 58366

E-mail: mccumber/utma.com • Web site: www.mccumberangus.com

1 mile west and 1/4 mile south of Rolette, North Dakota

Superior Productions 800-431-4452
For detailed information see page 3



Sale Day Telephones

701.246.3366 701.871.9800 701.871.1072

Sale Personnel

Auctioneer:

Roger Jacobs 406.698-7685
Box 270, Shepherd, MT 59079

Sale Consultants:

Casey St. Blanc 985.789.2110

Special Representatives:

Vern Frey, Angus Journal 701.537.5383
Cell 701.721.0344

Terry Robinson, Farm and Ranch Guide 701.255.3037

Kirby Goettsch, Western Livestock Reporter 605.380.3939

Scott Dirk, Tri-State Neighbor 605.335.7300

Kris Peterson, Cattle Business Weekly 701.399.0305

*Buyers unable to attend the sale may send bids to
McCumber Angus Ranch, Sale Consultants or Representatives.*

Sale Terms & Conditions

All cattle sell under the standard terms and conditions of the American Angus Association. Terms of the sale are cash.

Volume Discounts:

We will discount your purchase price 3% on 3 head purchased by one buyer and up to 10% on 10 head purchased by one buyer.

Delivery:

We offer free delivery in North Dakota and adjoining states on all bulls and free delivery up to 1,000 miles on purchases totalling \$2,500. Beyond 1,000 miles delivery will be billed at cost.

Sight Unseen Purchase Program:

If you cannot attend the sale and would like to purchase bulls, please give us a call and we'll be glad to help you with your order. Describe the type of bull, minimum and maximum parameters and price range. We want to assure you that your bid will be handled with the utmost professionalism and your money handled like it is our own. We guarantee 100% satisfaction on all orders. If you get the bull and don't like him, we will take him back.

Lodging & Transportation

Rolette Motel, Rolette ND 701.246.3733

Sky Dancer Hotel & Casino, Belcourt ND 701.244.2400

Econo Lodge, Rugby ND 701.776.5776

Hub Motel, Rugby ND 701.776.5833

Multiple locations in Minot ND

Rolette ND has a 3,500 foot paved runway. Minot, ND is served by Northwest Airlines. Minot is 90 miles from the ranch.

Herd Health & Nutrition

Herd Health: The McCumber herd is in excellent health, and all cattle sell with interstate health papers. Bulls have been vaccinated with Pyramid 5 + Presponse, 7-way, Dectomax and have had a complete fertility test.

Nutrition: The bulls were fed a high roughage ration. The ration was balanced to ensure the bull's soundness and longevity. We reached a maximum of 44 Mega Cals, and the protein level was 13.2 percent. The bulls are hard, sound footed, and have not been pushed at all. The ration consisted of Alfalfa-Grass hay, Sorghum Silage, DDG's, and earlage. In For those that do not know what earlage is, it consists of the grain, cob, and husk, thus adding additional fiber to the ration. Considering the winter, and low mega-cals we were very pleased with how the bulls performed. In the past we have fed a medicated creep before going to pasture, however this past spring the calves received no supplemental feed at home in the lot, or on pasture.

Marketing

If you have calves sired by our bulls, or females bred to our bulls, we would like to help you market them. We, along with the Spickler Ranch, sponsored the 45h Annual Angus Partners commercial female sale in Mandan. The consignors realized a considerable premium over the current market for their McCumber and Spickler sired replacement open and bred females. We are planning to continue with this sale and would be happy to accept your consignment at any time. I would also suggest checking out the Angus Source program. This is a very effective way to set apart your Angus sired feeder cattle, and replacement females.

Semen Interest

You will notice that we are retaining an interest in quite a few of the bulls. These are bulls we may want to collect semen from in the future for use within our herd. If we are able to sell semen from your bull, we would share with you any revenue generated from the sale of semen. The bulls would be collected when it was convenient for you. The buyer has full possession and salvage value of the bull. Many of these bulls will undoubtedly sell in the price range of the commercial man.

HOW TO PARTICIPATE AS AN ABSENTEE BUYER

We have made preparations to bid and buy livestock through Superior Productions' "Call or Click-To-Bid" service for those unable to attend in person on sale day. **Please note that all of the lots in the sale will also be available for viewing online prior to sale day at www.superiorlive.com**

HERE'S HOW IT WORKS

Turn in Bids Over the Phone. This is our traditional method of buying livestock. To get started simply go online to www.superiorlive.com and click on the tab titled "REGISTER FOR YOUR BUYER'S NUMBER". Print the registration form, fill it out and fax it in (817/378-3380) to Superior Productions with a signature on it. You can also mail it in to the address provided on the form. Upon receipt of this information Superior will call you with a buyer's number and the bid line phone number that you will use on sale day to place bids over the phone.

Click-To-Bid. This is Superior's newest way to buy cattle! Registration is free, but you must become a member of www.superiorclicktobid.com to sign up. Becoming a member is easy – just go to the homepage of www.superiorclicktobid.com and follow the outlined steps to get started. Input your information and select a username and password. You will receive an e-mail confirming you are a member. From that point forward you just have to sign in and select the sale you would like to register for and once approved by the ranch you will receive an e-mail confirming which sale you are now registered for.

Viewing the Auction. The sale will be broadcast via satellite on Dish Network channel 231 and DirecTV channel 345. The sale will also be broadcast live on the internet at www.superiorclicktobid.com – just go to the home page and select the auction. Remember you can call in to bid whether you watch on the TV or on the internet, but you must be a member of www.superiorclicktobid.com to "click-to-bid". Your computer must have Flash Media Player installed to view the auction.

Bidders who are successful in making purchases via satellite or internet will be contacted by the ranch after the sale to settle payment and make shipping arrangements.



Reference Sire:

A Sinclair Extra 4X13

Calved
2/7/2004

Reg. #
14774030

Emulation N Bar 5522
N Bar Emulation EXT
N Bar Primrose 2424

N Bar Prime Time D806
N Bar Lady Ida S C C 2P37
N Bar Lady Ida F1080

Emulation 31
Ankony 8F78 Lass 8F275
Emulation 31
Primrose N Bar 9962
Gardens Prime Time
N Bar Miss Emulous A404
N Bar Shadow X4124
N Bar Lady Ida D1986

Ind. Record	
BW	77
WW	
205	705
WR	108
ADG	
YW	
365	1257
YR	109
IMF	/
REA	/
FAT	/



Sinclair Extra 4X13

- His daughters are some of the best young cows on the Ranch, with neat tidy udders, mothering ability, easy dispositions, fertility, and productivity.
- His first daughters in production have a combined weaning ratio of 100 on 125 calves, and here at Mc Cumber they are 97 at birth and 103 on their calves for weaning.
- He consistently adds IMF to his progeny with 596@110 ratio
- Semen quality on his sons have been excellent
- He is a popular sire with commercial cattlemen around the country, and has been used in some of the very top herds
- Owned with Sinclair Cattle Co., N-Bar Land and Cattle, Lewis Hagen, and Genex Cooperative Inc.
- Semen available through Genex

EPDs										Dam's Prod.		
BW	WW	YW	Milk	SC	IMF	REA	Fat	\$W	\$B	BW	WW	YW
-1.0	+41	+73	+22	-1.18	+.67	-.37	+.047	31.49	42.87	3-98	3-108	3-103

- One of the all-time best sires used here.
- A consistent sire of light birth, calving ease progeny that have outstanding newborn calf vigor.
- He sires moderate framed cattle with performance, thickness, and length

Reference Sire:

B Mc Cumber 4X13 Extra 829

Calved 1/22/2008
Reg. # 16102276

N Bar Emulation EXT
Sinclair Extra 4X13
N Bar Lady Ida S C C 2P37

S A V 8180 Traveler 004
Miss Wix 6114 of Mc Cumber
Miss Wix 2027 of Mc Cumber

Emulation N Bar 5522
N Bar Primrose 2424
N Bar Prime Time D806
N Bar Lady Ida F1080
Sitz Traveler 8180
Boyd Forever Lady 8003
Garrison 8128 Dynamite
Miss Wix 352 of Mc Cumber

Ind. Record	
BW	75
WW	848
205	821
WR	117
ADG	3.14
YW	1,250
365	1,323
YR	111
IMF	3.56/96
REA	13.50/115
FAT	.30/125

EPDs										Dam's Prod.		
BW	WW	YW	Milk	SC	IMF	REA	Fat	\$W	\$B	BW	WW	YW
+2.1	+58	+98	+25		+.27	-.02	+.074	3.79	35.72	3-93	3-106	2-108

- 829 was the second high selling bull in our 2009 Bull sale to Wight Angus
- He is siring top performance in the right kind of package
- His dam is a top 004 daughter and produced from one of the top cows to ever reside on this Ranch Miss Wix 2027 of Mc Cumber.

Reference Sire:

C Sitz JLS Emulation EXT 536P

Calved 8/16/2004
Reg. # 14809623

Emulation N Bar 5522
N Bar Emulation EXT
N Bar Primrose 2424

D H D Traveler 6807
Ideal 4465 of 6807 4286
E E 4286 of Ideal 2240 1254

Emulation 31
Ankony 8F78 Lass 8F275
Emulation 31
Primrose N Bar 9962
Q A S Traveler 23-4
Bemindful Maid D H D 0807
Ee 30 1254 of Ideal 5254 960
Ee 30 2240 of Ideal 8245 960

Ind. Record	
BW	85
WW	
205	701
WR	
ADG	
YW	
365	
YR	
IMF	/
REA	/
FAT	/

EPDs										Dam's Prod.		
BW	WW	YW	Milk	SC	IMF	REA	Fat	\$W	\$B	BW	WW	YW
+3.6	+30	+51	+28	-.98	+.16	+.01	+.002	21.87	35.46			

- 536P was our choice through the 2006 Sitz Spring Sale
- He is a consistent sire of moderate, deep bodied, naturally thick cattle.
- His daughters are very impressive with an abundance of rib, thickness, and superior udder quality.

Reference Sire:

D O C C Tremendous 619T

Calved 1/19/2007
Reg. # 15992634

D H D Traveler 6807
O C C Emblazon 854E
Dixie Erica of C H 1019

O C C Anchor 771A
O C C Dixie Erica 960H
O C C Dixie Erica 907C

Q A S Traveler 23-4
Bemindful Maid D H D 0807
PBC 707 1M F0203
Dixie Erica of C H 615
D H D Traveler 6807
O C C Juanada 709v
N Bar Emulation EXT
Dixie Erica of C H 1019

Ind. Record	
BW	82
WW	
205	
WR	
ADG	
YW	
365	
YR	
IMF	/
REA	/
FAT	/

EPDs										Dam's Prod.		
BW	WW	YW	Milk	SC	IMF	REA	Fat	\$W	\$B	BW	WW	YW
-1.2	+43	+64	+10	-.78	-.02	+.35	-.009	31.79	14.26			

- Our selection and High Selling Bull of the 2008 Ohlde Cattle Co. sale.
- He consistently sires light birth, calving ease progeny, with explosive early growth, muscle, and soundness



Mc Cumber 4X13 Extra 829

- He is a moderate birth weight bull with added performance, length, and base width
- He will be used heavily here this spring
- Owned by Mc Cumber Angus Ranch, and Joe Wight ID
- Semen available from either owners



Sitz JLS Emulation EXT 536P

- His first daughters in production have a combined WWR of 102, and bred back well after raising their first calves
- He is a brother to Sinclair Excellency 5X25, Sinclair Rito Legacy 3R9, and Sinclair Net Present Value, all leased to major AI studs.
- He will continue to play a role in our program and is appreciated for his ability to sire forage efficient, easy fleshing, super uddered females.
- Owned with Sitz Angus Ranch
- Semen available from Mc Cumber



O C C Tremendous 619T

- Outstanding sire of early newborn calf vigor. They are bouncing around immediately and up nursing quickly.
- His sons have a masculine, muscular appearance, that will certainly catch your eye
- His daughters are the moderate, deep bodied, naturally thick kind that will thrive in even the toughest conditions.
- Owned with Ohlde Cattle Co., Murray Farms Inc.
- Semen available from any owner

Reference Sire:

E O C C Missing Link 830M

Ind. Record	
BW	
WW	
205	
WR	
ADG	
YW	
365	
YR	
IMF	/
REA	/
FAT	/

Calved
9/16/2002

Reg. #
14456399

O C C Emblazon 854E
O C C Headliner 661H
O C C Juanada 858F

D H D Traveler 6807
Dixie Erica of C H 1019
Basin Rainmaker 654X
O C C Juanada 709V
O C C Exodus 712E
O C C Dixie Erica 971E
D H D Traveler 6807
Dixie Erica of C H 1019

O C C Glory 950G
O C C Dixie Erica 946K
O C C Dixie Erica 816B

EPDs											Dam's Prod.		
BW	WW	YW	Milk	SC	IMF	REA	Fat	\$W	\$B		BW	WW	YW
-3	+48	+80	+16	+.25	-.22	+.50	+.002	34.45	2.76				

- A calving ease sire with muscle, performance, pounds, and soundness
- First daughters in production here at Mc Cumber are easy fleshing, neat uddered, and good dispositioned

Reference Sire:

F O C C Paxton 730P

Ind. Record	
BW	
WW	
205	
WR	
ADG	
YW	
365	
YR	
IMF	/
REA	/
FAT	/

Calved
3/14/2004

Reg. #
14940735

Basin Rainmaker 654X
O C C Focus 813F
Dixie Erica of C H 1019

Basin Rainmaker D S 380U
Basin Bardolene 423U
PBC 707 1M F0203
Dixie Erica of C H 615
N Bar Emulation EXT
Dixie Erica of C H 1019
O C C Anchor 771A
O C C Blackbird 778A

O C C Great Plains 943G
O C C Blackbird 736K
O C C Blackbird 824G

EPDs											Dam's Prod.		
BW	WW	YW	Milk	SC	IMF	REA	Fat	\$W	\$B		BW	WW	YW
-.6	+45	+81	+10	-.01	+.14	+.29	+.018	29.99	31.22				

- A reliable source of light birth, forage efficient, moderate framed cattle
- His dam is a top producing, neat uddered, easy fleshing daughter of OCC Great Plains.
- His sons performed well and the daughters are some of the top females in the replacement pen.

Reference Sire:

G Sitz Rainmaker 6536

Ind. Record	
BW	
WW	
205	
WR	
ADG	
YW	
365	
YR	
IMF	/
REA	/
FAT	/

Calved
3/5/2006

Reg. #
15323797

Sitz Rainmaker 8987
Sitz Rainmaker 6169
Sitz Barabamere Jet 3007

Sitz Rainmaker 8663
Sitz Barabamere 1655
Sitz Traveler 6802
Sitz Barabamere Jet 7951
Sitz Traveler 8180
Sitz Barabamere Jet 2698
G D A R Traveler 044
Sitz Elsiemere 737

Sitz Alliance 6595
Sitz Elsiemere 331
Sitz Elsiemere 1909

EPDs											Dam's Prod.		
BW	WW	YW	Milk	SC	IMF	REA	Fat	\$W	\$B		BW	WW	YW
+.5	+37	+82	+25	-.17	+.09	+.06	+.054	23.10	18.36				

- He is correct structured, very docile, thick quartered and maintains his condition very well
- He is a light birth weight sire that consistently passes on his natural thickness and sound structure to his progeny



O C C Missing Link 830M

- His dam was a favorite of mine on a tour at Ohlde's and was a large reason for his use here at Mc Cumber.
- We have a third crop on the ground and are very pleased with them as well.
- Missing Link sires the type of cattle that can work in a number of ways from the pasture to the feedlot the cattle perform.



O C C Paxton 730P

- We have our second set of calves on the ground
- Owned by Ohlde Cattle Company



Sitz Rainmaker 6536

- His daughters are high volume, sound structured, and have the look of a legitimate beef cow
- He is backed by a strong cow family and his pathfinder dam has a WWR 7@105, YWR 6@101, IMF 6@112, and REA 6@109.
- We think 6536 has a bright future.
- Owned with Spickler Ranch, and Sitz Angus Ranch
- Semen Available from Spickler Ranch

Reference Sire:

H Mc Cumber 4X13 Extra 751

Calved
1/27/2007

Reg. #
15813263

N Bar Emulation EXT
Sinclair Extra 4X13
N Bar Lady Ida S C C 2P37

BT Right Time 24J
Miss Wix 5139 of Mc Cumber
Miss Wix 7111 of Mc Cumber

Emu
N Bar Primrose 2424
N Bar Prime Time D806
N Bar Lady Ida F1080
Leachman Right Time
Sitz Everelda Entense 1905
G D A R Traveler 71
Miss Wix 365 of Mc Cumber

Ind. Record	
BW	66
WW	688
205	705
WR	104
ADG	3.22
YW	1,136
365	1,220
YR	99
IMF	6.00/147
REA	14.70/120
FAT	.39/122

EPDs										Dam's Prod.		
BW	WW	YW	Milk	SC	IMF	REA	Fat	\$W	\$B	BW	WW	YW
-1.3	+36	+55	+25	-.80	+.54	+.03	+.033	32.60	43.10	4-91	4-102	3-99

- The second high selling bull of our 2008 bull sale
- He is a sure shot heifer bull that stamps his progeny with muscle, length, and style.
- His dam is a BT Right Time 24J daughter of Miss Wix 7111, and represents the cow family well.

Reference Sire:

I Mc Cumber 4X13 Extra 718

Calved
1/20/2007

Reg. #
15813218

N Bar Emulation EXT
Sinclair Extra 4X13
N Bar Lady Ida S C C 2P37

S A V 8180 Traveler 004
Miss Wix 409 of Mc Cumber
Miss Wix 2022 HC Mc Cumber

Emulation N Bar 5522
N Bar Primrose 2424
N Bar Prime Time D806
N Bar Lady Ida F1080
Sitz Traveler 8180
Boyd Forever Lady 8003
Leachman Right Time
Miss Wix 7111 of Mc Cumber

Ind. Record	
BW	82
WW	814
205	771
WR	114
ADG	3.51
YW	1,302
365	1,333
YR	109
IMF	4.45/109
REA	12.00/98
FAT	.41/128

EPDs										Dam's Prod.		
BW	WW	YW	Milk	SC	IMF	REA	Fat	\$W	\$B	BW	WW	YW
+2.4	+44	+74	+25	-.73	+.28	-.40	+.039	28.08	31.63	4-94	4-104	4-104

- The high selling bull of our 2008 bull sale
- He sires attractive, well made progeny with extra length, a bit more size, and plenty of muscle and rib.

Reference Sire:

J Mc Cumber Hard Drive 7150

Calved
2/16/2007

Reg. #
15813192

Sitz Traveler 8180
S A V 8180 Traveler 004
Boyd Forever Lady 8003

Leachman Right Time
Lassie 206 of Mc Cumber
Lassie 272 of Mc Cumber

G D A R Traveler 71
Sitz Everelda Entense 1137
A A R New Trend
S V F Forever Lady 57D
N Bar Emulation EXT
Leachman Erica 0025
A A R New Trend
Lassie 252 of Mc Cumber

Ind. Record	
BW	93
WW	732
205	705
WR	100
ADG	3.73
YW	1,250
365	1,302
YR	100
IMF	3.67/91
REA	13.30/107
FAT	.31/100

EPDs										Dam's Prod.		
BW	WW	YW	Milk	SC	IMF	REA	Fat	\$W	\$B	BW	WW	YW
+4.2	+51	+99	+24	+.40	+.15	+.16	+.039	21.42	42.28	3-102	3-111	3-107

- The son of Lassie 206 chosen to continue her influence in the herd
- His progeny are long bodied, heavy muscled, and sound.
- His sons will certainly be sale day favorites



Mc Cumber 4X13 Extra 751

- 751 has been used successfully on heifers, and will continue to be a staple of our breeding program.
- Owned with Nelson Angus Ranch, ID
- Semen available from either owner



Mc Cumber 4X13 Extra 718

- His dam is a pathfinder daughter of 004 and out of Miss Wix 2022 of Mc Cumber who topped our 2009 Female sale at \$26,000.
- His first daughters in production are big bodied, near perfect uddered, and docile.
- Owned with Current Creek Angus, Lance Johnson, and Becker Farms in MT
- Semen available from any of the owners



Mc Cumber Hard Drive 7150

- His daughters are feminine, deep bodied, and look like females that will work in any environment
- Was the 4th high selling bull in our 2008 bull sale
- Owned with Master Angus in MT
- Semen available from Gene Ryg



Mc Cumber 829 Extra 064



Maternal Grand dam to Lot 1 • Oak Hill Miss Wix 9402



Maternal sister to dam • Miss Wix 6002 of
Mc Cumber as Heifer calf



Mc Cumber Missing Link 911
produced by full sister to dam

Lot:

1 Mc Cumber 829 Extra 064

Calved
1/27/2010

Reg. #
16684370

Sinclair Extra 4X13
Mc Cumber 4X13 Extra 829
Miss Wix 6114 of Mc Cumber

N Bar Prime Time D806
Miss Wix 7138 of Mc Cumber
Oak Hill Miss Wix 9402

N Bar Emulation EXT
N Bar Lady Ida S C C 2P37
S A V 8180 Traveler 004
Miss Wix 2027 of Mc Cumber
Gardens Prime Time
N Bar Miss Emulous A404
N Bar Emulation EXT
Homestretch Miss Wix 663

Ind. Record	
BW	82
WW	840
205	799
WR	120
ADG	3.72
YW	1,335
365	1,394
YR	114
IMF	2.91/83
REA	14.0/113
FAT	.37/123

EPDs										Dam's Prod.		
BW	WW	YW	Milk	SC	IMF	REA	Fat	\$W	\$B	BW	WW	YW
+ .8	+ 56	+ 96	+ 26		+ .27	+ .10	+ .087	32.16	35.44	1 - 96	1 - 120	1 - 114

Selling ½ interest and full possession - Recommended for use on heifers- This unique pedigreed, phenotypic standout son of the up and coming Mc Cumber 4x13 Extra 829 is the logical choice to be the leadoff bull for our 2011 Bull sale. 064 excelled at nearly every measure. He is the #1 WW bull of the calf crop. He weaned off his dam at 840 lbs. and earned a 205 day weight of nearly 800 lbs. to ratio 120 and earned the top spot of the calf crop. In addition he gained 3.72 lbs./day for a ratio of 107 and pushed the scale down at 1335 lbs. for the #1 actual YW and a 365 day weight of nearly 1400 lbs. to ratio 114. Along with his top performance, 064 scanned a REA of 14.1 to ratio 113. 064 definitely will catch your eye as you view the bulls. He possesses extra length, puts a foot down in all four corners, and tracks wide and true as he travels the pen. His extra muscle expression carries out into a large hip and rear quarter. Furthermore, he has a quiet demeanor and is large scrotaled. One of the best parts about 064 is his outstanding dam and the cow family behind him. Miss Wix 7138 of Mc Cumber is an easy fleshing, neat uddered daughter of N Bar Primetime D806 and her donor

dam is Oak Hill Miss Wix 9402 who is one of the top daughters of EXT. 9402 has been a top producer with a WW ratio of 5@108 and YWR of 5@104. She is the dam of the top selling bull in our 2009 bull sale to CSF Angus in VA, and has a son working in the Thompson's Royale Manor Angus herd in IN. She is also the dam to the 2nd high selling heifer calf of our 2006 female sale to Bohi in KS, who went on to produce a \$4750 pregnancy in the Foundation Female and who later sold to Buford Angus in OK, and produced the top selling bred heifer in one of their sales. A full sister to 7138 produced the popular and \$7500 Missing Link son to Jacob Hegland in ND, and another maternal sister is the dam to the 6536 son selling as Lot 11 in this sale and one of the top heifer calves of our 2009 Female sale to Elston Lone Tree Ranch in ND.

064 is the performance standout of the group with a pleasing look, and the cows behind him to build a cow herd around. He combines two of the top Miss Wix cows to reside on this Ranch in 2027, and 9402, thus ensuring his ability to not only inject performance but also the ability to sire fertile, adaptable, functional females with top production.



Mc Cumber 4X13 Extra 011

Lot:

2 Mc Cumber 4X13 Extra 011

Calved
1/20/2010

Reg. #
16684226

N Bar Emulation EXT
Sinclair Extra 4X13
N Bar Lady Ida S C C 2P37

Emulation N Bar 5522
N Bar Primrose 2424
N Bar Prime Time D806
N Bar Lady Ida F1080
A A R New Trend
SV F Forever Lady 57D
Pine Creek Right Time 1147
B Pride 273 of Mc Cumber

Boyd New Day 8005
B Pride 636 of Mc Cumber
B Pride 463 of Mc Cumber

Ind. Record	
BW	83
WW	770
205	702
WR	105
ADG	3.93
YW	1,293
365	1,331
YR	109
IMF	3.54/101
REA	12.4/100
FAT	.26/87

EPDs										Dam's Prod.		
BW	WW	YW	Milk	SC	IMF	REA	Fat	\$W	\$B	BW	WW	YW
+ .9	+ 48	+ 89	+ 26		+ .36	-.14	+.032	29.01	43.28	2 - 95	2 - 107	2 - 108

Selling ½ interest and full possession-Recommended for use on heifers-This long bodied, free stiding 4x13 son is one of the best to date. 011 is a wide based, sound structured, big scrotaled bull with outstanding post weaning performance in an efficient, moderate framed package. He came off his dam with an actual WW of 770 lbs. without creep and went on to gain 3.93 lbs/day on a 44 Mcal ration and earn a 365 day weight of 1331 lbs. to ratio 109. He scanned at or above average across the board on ultrasound, and puts together a well balanced tabulation. His outstanding dam is a powerful, easy fleshing, deep bodied, neat uddered daughter of Boyd New Day and is the top daughter in the herd by him. B Pride 636 was the top performing heifer of her calf crop, yet matured into a moderate, fertile, productive cow with a BWR of 2@95, WWR 2@107, YWR 2@108 and a calving interval of 4@362. Not only is his dam a top producer, but his Grand dam is B Pride 463 of Mc Cumber who has been one of the most productive, easiest fleshing, deepest bodied females on the Ranch. Her production, combined with outstanding fertility,



Maternal Grand dam • B Pride 463 of Mc Cumber



Maternal brother to dam •
Mc Cumber 4X13 Extra 975



Maternal brother to dam •
Mc Cumber 6120 Traveler 8144

and overall type has set the standard here. She has a WWR 5@114, YWR 5@108, and IMF 5@110, and calving interval of 6@366 days. Her sons include last year's high selling bull Mc Cumber 4x13 Extra 975 to Haugen Cattle Company, and two other sons that sold to Joe Bohl in ND. She has averaged nearly \$8700 on 3 sons through past Mc Cumber bull sales.

Sinclair Extra 4X13 continues to impress us with his ability to consistently sire cattle that are light birth, high marbling, and females with outstanding mothering ability, fertility, udder quality, and productivity. 011 is one of his best sons not only in terms of performance, but also is backed by cows that have consistently excelled at traits that not only help add to our bottom line, but our customers as well.

Lot:

3 Mc Cumber Paxton 0108

Ind. Record	
BW	79
WW	745
205	701
WR	105
ADG	3.38
YW	1,195
365	1,242
YR	102
IMF	3.43/98
REA	13.5/109
FAT	.27/90

Calved
2/3/2010

Reg. #
16696704

O C C Focus 813F
O C C Paxton 730P
O C C Blackbird 736K

N Bar Emulation EXT
Miss Wix 616 of Mc Cumber
Miss Wix 409 of Mc Cumber

Basin Rainmaker 654X
Dixie Erica of C H 1019
O C C Great Plains 943G
O C C Blackbird 824G
Emulation N Bar 5522
N Bar Primrose 2424
S A V 8180 Traveler 004
Miss Wix 2022 HC Mc Cumber

EPDs										Dam's Prod.		
BW	WW	YW	Milk	SC	IMF	REA	Fat	\$W	\$B	BW	WW	YW
-3	+46	+79	+18		+.15	+.25	+.026	3.11	35.53	3-95	3-107	3-105

Selling 1/2 interest and full possession- Recommended for use on heifers- An elite calving ease, cow making herd bull prospect sired by OCC Paxton and backed by a pathfinder daughter of EXT from the Miss Wix cow family with multiple generations of pathfinders and light birth weight females. 0108 is a sound structured, heavy muscled bull with outstanding performance. He is moderate framed, deep bodied, wide based, and tracks wide and true as he travels. In addition to this his added muscle expression is confirmed by a REA of 13.5 and a REA/CWT of 1.21. He carries this added muscle out into a large, square, expressive hip and rump. 0108 is large scrotaled, clean sheathed, and overall clean in his design. His pathfinder dam is a moderate framed, easy fleshing, good footed daughter of EXT with a BWR 3@95, WWR 3@107, YWR 3@105, REA 3@113 and an average birth weight of 3@77lbs. Her udder sets the standard for quality with small well placed teats, and snug rear and fore udder attachment. She is a member of the Miss Wix cow family and descends from a line of females that include 6 of 7 generations of pathfinders. Her pathfinder dam Miss Wix 409 of Mc Cumber is the dam to the high selling bull in our 2008 Bull sale Mc Cumber 4x13 Extra 718 to Currant Creek, and Lance Johnston in MT and has outstanding production ratios as well with a BWR 4@94, WWR 4@104, YWR 4@104, IMF 4@114, REA 4@100, and an average birth weight of 5@81lbs. Her pathfinder Grand dam is Miss Wix 2022 of Mc Cumber who topped our 2009 Female sale to Sinclair Cattle Company, and has produced many top sellers for us over the years. Her production will not disappoint with a BWR 5@95, WWR 5@104, YWR 5@102, IMF 14@110 and an average birth weight of 6@83lbs.

0108 will be one of the most unique calving ease herd bull prospects to sell with multiple generations of top females known for fertility, calving ease, udder quality, and adaptability. Linebred for consistency, and stamped with the predictability of sires known to produce top females, and cattle that have the ability to work in an array of environments and stand the test of time.

OCC Paxton Daughters sold to Saddle River Ranch



Gale 02 of Mc Cumber



Lassie 010 of Mc Cumber



Grand dam • Miss Wix 409 of Mc Cumber



Great Grand dam Miss Wix 2022 of Mc Cumber



Great Great Grand dam Miss Wix 7111 of Mc Cumber

McCumber
Angus
Ranch

Cow herd known for
outstanding maternal traits

Chuck Tastad Family
RR1 • Box 128
Rolette, ND 58366
Chuck (701) 246-3366
Matt (701) 246-3547

Email: mccumber@utma.com
www.mccumberangus.com

Located 1 mile west, 1/4 south of Rolette



Mc Cumber 004 Traveler 001

Lot:

4 Mc Cumber 004 Traveler 001

Calved
2/2/2010

Reg. #
16684213

G D A R Traveler 71
Sitz Everelda Entense 1137
A A R New Trend
S V F Forever Lady 57D
D H D Traveler 6807
Sitz Everelda Entense 1137
P J M Power 291
B Pride 134 of Mc Cumber

Sitz Traveler 8180
S A V 8180 Traveler 004
Boyd Forever Lady 8003

Sitz Traveler 9929
B Pride 9124 of Mc Cumber
B Pride 839 of Mc Cumber

Ind. Record	
BW	92
WW	802
205	735
WR	100
ADG	3.67
YW	1,290
365	1,322
YR	100
IMF	3.87/92
REA	14.0/106
FAT	.43/119

EPDs										Dam's Prod.		
BW	WW	YW	Milk	SC	IMF	REA	Fat	\$W	\$B	BW	WW	YW
+3.8	+42	+78	+21	+.30	+.13	+.06	+.056	2.98	32.81	7-101	7-106	5-104

Selling 2/3 interest and full possession- A phenotypic standout and possibly the best 004 son we have bred. 001 is thick from end to end. He is wide based and abounding with muscle. He has the herd bull look and has been a favorite all winter. 001 is a masculine, beef bull that is sound structured, good footed, and deep from fore rib to flank. He weaned off his recipient dam at 800lbs. gained 3.67 lbs/day and earned a 365 day weight of 1322 lbs. In addition he scanned a REA of 14.0 and possesses the added muscle and rib dimension demanded by cattlemen today. His pathfinder donor dam is a high volume, wide made daughter of Sitz Traveler 9929. She is good uddered, and sound on her feet and legs. She has been very productive with a BWR 7@101, WWR 7@106, YWR 5@104, and a REA 19@102. She was a feature of a past Female sale selling to Fortune's Rafter U Cross Ranch in SD where she is still in production at the age of 12. She has produced several sons that have sold through past Mc Cumber Bull Sales which include Mc Cumber Total Value 551 who sold to Lindskov Angus in SD and was used back here at



Maternal Brother • Mc Cumber Total Value 551



Dam • B Pride 9124 of Mc Cumber

Mc Cumber. She has produced several full brothers to 001 working for Scott Bradac, Will Fritel, Ervin Helmuth, and Johnson Brothers in ND. We have two full sisters retained here at Mc Cumber and others are working for JSK Angus in NY, and CSF Angus in VA.

001 has a heritage of proven performance, longevity, and fertility. This legitimate beef bull will get your attention and impress you with his overall completeness.



Mc Cumber 4X13 Extra 077

Lot:

5 Mc Cumber 4X13 Extra 077

		Ind. Record	
Calved	Reg. #	BW	76
1/29/2010	16684381	WW	755
		205	763
		WR	114
		ADG	3.35
		YW	1,200
		365	1,299
		YR	106
		IMF	3.90/111
		REA	13.1/106
		FAT	.31/103

N Bar Emulation EXT	Emulation N Bar 5522
Sinclair Extra 4X13	N Bar Primrose 2424
N Bar Lady Ida S C C 2P37	N Bar Prime Time D806
	N Bar Lady Ida F1080
	N Bar Emulation EXT
Leachman Right Time	Leachman Erica 0025
Rosetta 811 of Mc Cumber	A A R New Trend
Rosetta 1017 of Mc Cumber	Rosetta 128 of Mc Cumber

EPDs										Dam's Prod.		
BW	WW	YW	Milk	SC	IMF	REA	Fat	\$W	\$B	BW	WW	YW
+ .4	+ 47	+ 77	+ 25		+ .32	-.23	+ .044	32.19	35.12	1 - 94	1 - 114	1 - 106

Selling 2/3 interest and full possession- Recommended for use on heifers- 077 is an extra stout, long bodied son of Sinclair Extra 4X13. He has been a favorite of mine all year and is admired for his added muscle, length, and stoutness. Along with this, he has performed well across the board. He weaned off his outstanding dam at 755lbs. and earned a 205 day weight of 763 lbs. to ratio 114 as his dam's first calf. In addition, he earned a 365 day weight of nearly 1300 lbs. to 106 and scanned superbly with an IMF of 3.90 to ratio 111, and a REA of 13.1 to ratio 106. His dam is a top daughter of Right Time with a neat, well attached udder, excellent foot shape and structure, and along with her abundance of rib still has the femininity through her head and neck. She is a member of the Rosetta cow family and is the result of the progression our program. Her pedigree is stacked with proven cow makers that include Right Time, AAR New Trend, Rito 054, Shoshone Viking, and 376. Her pathfinder dam has been extremely productive as well with a WWR 7@105, and YWR 7@100. Her pathfinder Grand dam raised 14 calves with a WWR of 105.



Sire • Sinclair Extra 4X13

This top son of 4X13 has the credentials to move your herd in a positive direction. He combines early growth, calving ease and carcass into a complete package with more muscle and stoutness than the average 4x13.



Mc Cumber 4X13 Extra 059

Lot:

6 Mc Cumber 4X13 Extra 059

		Ind. Record	
Calved	Reg. #	BW	86
1/27/2010	16684364	WW	750
		205	677
		WR	101
		ADG	3.87
		YW	1,265
		365	1,296
		YR	106
		IMF	3.69/105
		REA	13.5/109
		FAT	.42/140

N Bar Emulation EXT	Emulation N Bar 5522
Sinclair Extra 4X13	N Bar Primrose 2424
N Bar Lady Ida S C C 2P37	N Bar Prime Time D806
	N Bar Lady Ida F1080
	N Bar Emulation EXT
Leachman Right Time	Leachman Erica 0025
Miss Wix 583 of Mc Cumber	Sitz Traveler 9929
Miss Wix 0010 of Mc Cumber	Miss Wix 5007 of Mc Cumber

EPDs										Dam's Prod.		
BW	WW	YW	Milk	SC	IMF	REA	Fat	\$W	\$B	BW	WW	YW
+ 1.2	+ 38	+ 76	+ 23		-.51	+ .35	-.16	+ .053	25.74	36.96	3 - 100	3 - 107

Selling 2/3 interest and full possession- Recommended for use on heifers- 059 is a super complete, well made, sound structured son of 4x13. He moves with ease as he travels, and possesses that extra neat and clean front end. Furthermore, he is wide based, heavy muscled and deep bodied from front to rear. He gained near the top with an ADG of 3.87 lbs/day to ratio 112, and earned a 365 day weight of nearly 1300 lbs. to ratio 106. Additionally, he scanned very well with an IMF of 3.69 to ratio 106 and a REA of 13.6 to ratio 109. His pathfinder dam is one of the top Right Time daughters on the Ranch with a near perfect udder, and additional depth and spring of rib. She is a good footed, easy fleshing, productive member of the Miss Wix cow family, and traces directly to Miss Wix 365 of Mc Cumber. She has been very productive and fertile with a calving interval of 4@363 days, WWR 4@107, YWR 4@105, IMF 4@108, REA 4@103, and an average BW of 4@83lbs. She has never missed settling first service AI and has produced one son that sold to Mark Hoffert in ND. She is currently nursing a standout heifer calf by our Rito 707 son Sinclair Entrepreneur 8R101.

059 and 077 would make an excellent pair of 3/4 brothers to turn out with a set of females. They are complete, top performing bulls with the bred in ability to sire forage efficient, fertile females that will also sire males with performance, muscle, and soundness.



Mc Cumber 7150 Traveler 047

Lot:

7 Mc Cumber 7150 Traveler 047

Calved
1/26/2010

Reg. #
16684354

S A V 8180 Traveler 004
McCumber Hard Drive 7150
Lassie 206 of Mc Cumber

Boyd New Day 8005
Lassie 4117 of Mc Cumber
Lassie 1155 of Mc Cumber

Sitz Traveler 8180
Boyd Forever Lady 8003
Leachman Right Time
Lassie 272 of Mc Cumber
A A R New Trend
S V F Forever Lady 57D
Mc Cumber 6122 Equator 8113
Lassie 708 of Mc Cumber

Ind. Record	
BW	79
WW	750
205	675
WR	101
ADG	3.97
YW	1,278
365	1,310
YR	107
IMF	3.50/100
REA	14.4/116
FAT	.27/90

EPDs										Dam's Prod.		
BW	WW	YW	Milk	SC	IMF	REA	Fat	\$W	\$B	BW	WW	YW
+ .9	+ 49	+ 97	+ 22	+ .51	+ .18	+ .36	+ .020	25.84	48.06	5 - 83	5 - 97	4 - 103

Selling 2/3 interest and full possession- Recommended for use on heifers- 047 is a long spined, bigger framed, big topped calving ease son of Mc Cumber Hard Drive 7150. This is the second calf crop by 7150 and he really sired a high performing, heavy muscled set of sons. 7150 was one of the high selling lots of our 2008 bull sale to Master Angus in MT, where they have calved out many daughters and report good mothering, excellent udder structure, and the ability to lay down and have calf without messing around. He has a unique combination of muscle, length, soundness and added scrotal circumference with top performance, calving ease, and carcass. 047 gained near the top of his contemporary with an ADG of 3.97 lbs/day to ratio 114, and earned a 365 day weight of 1310 lbs. to ratio 107. He scanned well with an IMF of 3.50 to ratio 100, and had one of the largest REA of 14.4 to ratio 116. His dam is an extremely light birth weight cow with a BWR of 5@83 and has an average birth weight on her calves of 72 lbs. She has also done well on the ultrasound with an IMF 4@109, and REA 4@109. Lassie 4117 is a



Maternal Brother • Mc Cumber 536P Ext 7165



Sire • Mc Cumber Hard Drive 7150

long bodied, smooth made cow with a neat well attached udder and has produced two sons that have sold through previous sales to Currant Creek, Lance Johnston, and Bar V. She has one daughter in the herd by 4x13 who is currently nursing an outstanding heifer calf by Missing Link.

047 is one of the best combinations of calving ease, performance, and carcass in the sale. Check him out!



Mc Cumber Missing Link 005

Lot:

8 Mc Cumber Missing Link 005

Ind. Record	
BW	92
WW	755
205	706
WR	100
ADG	3.47
YW	1,216
365	1,261
YR	100
IMF	3.34/79
REA	14.8/112
FAT	.36/100

Calved
2/10/2010

Reg. #
16696682

O C C Headliner 661H
O C C Missing Link 830M
O C C Dixie Erica 946K

O C C Emblazon 854E
O C C Juanada 858F
O C C Glory 950G
O C C Dixie Erica 816B
Mc Cumber Equator 6122
Rosetta 421 of Mc Cumber
Mc Cumber 124 Traveler 212
Erianna 250 of Mc Cumber

Mc Cumber 6122 Equator 8113
Erianna 2206 of Mc Cumber
Erianna 880 of Mc Cumber

EPDs										Dam's Prod.		
BW	WW	YW	Milk	SC	IMF	REA	Fat	\$W	\$B	BW	WW	YW
+1.7	+42	+78	+24	+32	-.04	+.35	-.008	3.86	29.63	5-106	5-109	5-110

Selling ½ interest and full possession- You've heard the phrase "Butt, Guts, and Nuts"? Well 005 epitomizes this phrase, he is an absolute tank with an abundance of muscle down his top which he carries out into a large expressive hip and hind quarter. He is a large scrotaled bull that possesses as much depth of body, and natural thickness as you will find. This masculine, muscular, moderate beef bull performed well with an actual weaning weight of 755lbs. and weighed right along the bigger framed bulls at a year with an actual YW of 1216 lbs. and earned a 365 day weight of 1261 lbs. In addition to this he scanned the largest REA of 14.8 to ratio 112 in his ET contemporary group. He stands down square on his feet and legs and tracks wide and true as he travels. His pathfinder donor dam is a powerful, deep bodied, easy fleshing daughter of Mc Cumber 6122 Equator 8113. She has produced many top progeny for us and one of her sons includes the 2007 sale topper Mc Cumber 004 Traveler 6120 who sold to Kemnitz Angus in SD. In our 2009 female sale they also purchased Erianna 2206 of Mc Cumber as one of the top selling females of that sale. She has produced many daughters that have been



Dam • Erianna 2206 of Mc Cumber



Maternal Brother • Mc Cumber 004 Traveler 6120

4x13 Daughter out of maternal sister • Erianna 0129 of Mc Cumber

retained here at Mc Cumber and are doing an outstanding job.

005 could be utilized as a changer, or would fit a strictly forage program where I would expect him to sire the type of easy fleshing, forage efficient females that will thrive in even the harshest environments. He falls just outside our parameters for a heifer bull, but after a season on cows he may just calve easy enough to be used on heifers.



Lot:

9 Mc Cumber 6536 Rainmakr 0197

		Ind. Record	
Calved	Reg. #	BW	88
3/16/2010	16684311	WW	704
		205	779
		WR	117
		ADG	3.86
		YW	1,217
		365	1,397
		YR	114
		IMF	3.40/97
		REA	12.6/102
		FAT	.42/140

Sitz Rainmaker 6169	Sitz Rainmaker 8987
Sitz Rainmaker 6536	Sitz Barbaramere Jet 3007
Sitz Elsiemere 331	Sitz Alliance 6595
	Sitz Elsiemere 1909
	Sitz Traveler 8180
S A V 8180 Traveler 004	Boyd Forever Lady 8003
Blackcap 747 of Mc Cumber	Mc Cumber 71 Traveler 7114
Blackcap 015 of Mc Cumber	Blackcap 8165 of Mc Cumber

EPDs										Dam's Prod.		
BW	WW	YW	Milk	SC	IMF	REA	Fat	\$W	\$B	BW	WW	YW
+2.1	+47	+88	+27	+37	+17	-.03	+.061	26.18	29.89	2-103	2-110	2-109

Selling 2/3 interest and full possession- One of the top performing bulls in the pen. This mid-March son of Sitz Rainmaker 6536 has performed at the top of the contemporary at every measure. He earned a 205 day weight of 779 lbs. at weaning to ratio 117 and owned the #2 spot of the calf crop. He went on to gain 3.86 lbs/day to ratio 111, and earned a 365 day weight of nearly 1400 lbs. to ratio 114 and share the #1 spot with the lot 1 bull. Along with his outstanding performance 0197 is a deep bodied, wide made bull with a quiet disposition, and plenty of muscle. His dam is a high volume, easy fleshing, highly productive daughter of 004. She is off to an outstanding start with a WWR 2@110, and YWR 2@109. Her only other son sold in last year's sale to Allen Brossart in ND.

This is one of the younger bulls in the sale, but competed and performed with the older bulls in the pen. Our first 6536 daughters are calving and are deep bodied, easy fleshing, good uddered females with a quiet disposition, and a good mothering instinct.



Lot:

10 Mc Cumber 7150 Traveler 04

		Ind. Record	
Calved	Reg. #	BW	82
1/18/2010	16684349	WW	784
		205	735
		WR	110
		ADG	3.84
		YW	1,295
		365	1,349
		YR	110
		IMF	3.20/91
		REA	13.1/106
		FAT	.36/120

S A V 8180 Traveler 004	Sitz Traveler 8180
Mccumber Hard Drive 7150	Boyd Forever Lady 8003
Lassie 206 of Mc Cumber	Leachman Right Time
	Lassie 272 of Mc Cumber
	Boyd New Day 8005
Mc Cumber 8005 New Day 455	ENCHANTRESS 086 of Mc Cumber
Miss Wix 7210 of Mc Cumber	Leachman Right Time
Miss Wix 511 of Mc Cumber	Miss Wix 765 of Mc Cumber

EPDs										Dam's Prod.		
BW	WW	YW	Milk	SC	IMF	REA	Fat	\$W	\$B	BW	WW	YW
+2.1	+47	+92	+24	+.25	+.17	+.15	+.050	24.81	38.68	2-98	2-110	2-109

Selling 2/3 interest and full possession- Recommended for use on heifers- 04 is one stout, good looking rascal sired by Mc Cumber Hard Drive 7150. He has been a standout with a weaning weight of 784 lbs. that earned him a 205 day weight of 735 lbs. to ratio 110. He gained 3.84 lbs/day and had a YW of nearly 1300lbs which earned him a 365 day weight of 1349 lbs. to ratio 110. This big scrotaled, heavy muscled bull is wide bodied, good footed, and has a large hip and hind quarter. He had a REA of 13.1 to ratio 106 and confirms the muscle which he displays. His dam is a moderate framed, easy fleshing, neat uddered New Day grand daughter that is off to a good start with a BWR 2@98, WWR 2@110, YWR 2@109, IMF 2@100, and REA 2@103. Her first 2 calves have an average BW of 82 lbs. and her first son sold in last year's sale to Chuck Volk in ND. She is currently nursing a super bull calf out of Mc Cumber 004 Traveler 6120.

04 is a neat pedigreed, heavy muscled bull that traces multiple times to Right Time, and has that herd bull look.



Mc Cumber 751 Extra 067

Lot:

11 Mc Cumber 751 Extra 067

Sinclair Extra 4X13
Mc Cumber 4X13 Extra 751
Miss Wix 5139 of Mc Cumber

Sitz JLS Emulation EXT 536P
Miss Wix 8186 of Mc Cumber
Miss Wix 5129 of Mc Cumber

N Bar Emulation EXT
N Bar Lady Ida S C C 2P37
BT Right Time 24J
Miss Wix 7111 of McCumber
N Bar Emulation EXT
Ideal 4465 of 6807 4286
Leachman Right Time
Miss Wix 8002 of Mc Cumber

Ind. Record	
BW	71
WW	725
205	735
WR	110
ADG	3.46
YW	1,185
365	1,289
YR	105
IMF	3.94/113
REA	12.3/99
FAT	.30/100

EPDs										Dam's Prod.		
BW	WW	YW	Milk	SC	IMF	REA	Fat	\$W	\$B	BW	WW	YW
-8	+41	+66	+27		+.26	-.01	+.033	32.71	36.46	1-88	1-110	1-105

Selling 1/2 interest and full possession- Recommended for use on heifers- This sure-shot heifer bull comes highly recommended for calving ease. Not only did he start out with just a 71lb. birth weight but went on to wean off his dam at 725 lbs. and earned a 205 day weight of 735 lbs. to ratio 110 as his dam's first calf. In addition to this he gained 3.46lbs/day and had a 365 day weight of 1289 lbs. to ratio 105. 067 is a moderate framed, deep bodied, thick made bull with added length, and muscle. He stands down wide and square, and moves nicely as he travels. Check out the pedigree on this good bull. His sire is the true calving ease son of 4X13 that sold to Nelson Angus in ID for \$12,000 through our 2008 bull sale. Mc Cumber 4x13 Extra 751's dam is the outstanding BT Right Time 24J daughter out of Miss Wix 7111, who was flushed last spring for the first time. 067's dam is a moderate, easy fleshing, perfect uddered daughter of Sitz JLS Emulation EXT 536P, and would rank at or near the top of that sire group in my book. Her dam is one of the easiest fleshing, neatest uddered daughters of Right Time on the ranch and a favorite of visitors to the Ranch. She is a great grand daughter of Miss Wix 365 of Mc Cumber, which makes 067 double bred to this foundation female. 067 combines the two resident herd sires by EXT, Sinclair Extra 4X13, and 536P, he also stacks their paternal brother Right Time in the pedigree a couple times.

This true calving ease herd bull prospect is linebred for predictable females. These females will have the ability to hustle for forage and maintain themselves in an array of environments.



Mc Cumber 6536 Rainmaker 080

Lot:

12 Mc Cumber 6536 Rainmaker 080

Sitz Rainmaker 6169
Sitz Rainmaker 6536
Sitz Elsiemere 331

S A V 8180 Traveler 004
Miss Wix 6002 of Mc Cumber
Oak Hill Miss Wix 9402

Sitz Rainmaker 8987
Sitz Barbaramere Jet 3007
Sitz Alliance 6595
Sitz Elsiemere 1909
Sitz Traveler 8180
Boyd Forever Lady 8003
N Bar Emulation EXT
Homestretch Miss Wix 663

Ind. Record	
BW	97
WW	718
205	672
WR	101
ADG	4.14
YW	1,269
365	1,334
YR	109
IMF	3.64/104
REA	12.1/98
FAT	.38/127

EPDs										Dam's Prod.		
BW	WW	YW	Milk	SC	IMF	REA	Fat	\$W	\$B	BW	WW	YW
+3.5	+43	+91	+25		+.13	-.07	+.062	19.30	27.76	3-108	3-102	3-103

Selling 2/3 interest and full possession- This big bodied, large scrotaled son of Rainmaker 6536 was one of the top gaining bulls on test with an ADG of 4.14 lbs/day. He earned a 365 day weight of 1334 lbs. to ratio 109, and scanned well with an IMF of 3.64 to ratio 104. This gentle dispositioned bull is out of a maternal sister to the Lot 1 bull in this sale and is a very productive daughter of 004 with a WWR 3@102, and



Dam as a heifer calf • Miss Wix 6002 of Mc Cumber



Grand dam • Oak Hill Miss Wix 9402

YWR 3@101. Her full sister was the 2nd high selling heifer calf of our 2006 female sale to Bohi in KS where she produced a \$4750 pregnancy in the Foundation Female sale in Denver and later sold to Buford Ranch in OK where she produced the top selling bred heifer in one of their first sales. Miss Wix 6002 has produced one son that sold to Kent Mc Dougall and a daughter that sold to the Elston Lone Tree Ranch as a feature heifer calf in our 2009 Female sale.

080 is one of the top 6536 sons in this sale and is backed by cow family that has excelled in many environments and operations around the country.



Mc Cumber 829 Extra 0133

Lot:

13 Mc Cumber 829 Extra 0133

Calved 2/7/2010
Reg. # 16684249

Sinclair Extra 4X13
Mc Cumber 4X13 Extra 829
Miss Wix 6114 of Mc Cumber

Leachman Right Time
Lassie 521 of Mc Cumber
Lassie 974 of Mc Cumber

N Bar Emulation EXT
N Bar Lady Ida S C C 2P37
S A V 8180 Traveler 004
Miss Wix 2027 of Mc Cumber
N Bar Emulation EXT
Leachman Erica 0025
Mc Cumber Foundation 701
Lassie 272 of Mc Cumber

Ind. Record	
BW	102
WW	784
205	728
WR	109
ADG	4.04
YW	1,321
365	1,374
YR	112
IMF	3.06/87
REA	12.6/102
FAT	.35/117

EPDs										Dam's Prod.		
BW	WW	YW	Milk	SC	IMF	REA	Fat	\$W	\$B	BW	WW	YW
+4.1	+46	+88	+25		+14	-.11	+.049	2.96	32.30	4-101	4-105	4-105

Selling 2/3 interest and full possession- This extra quiet, power bull has performed near the top of his contemporary from the start. He weaned off his pathfinder dam at 784 lbs. to earn a 205 day weight of 728 to ratio 109. In addition he had some of the best post weaning performance with an ADG of 4.04 lbs/day to ratio 116, and pushed the scale down to 1321 lbs. at a year and recorded a 365 day weight of 1374 lbs. to ratio 112. 0133 is a large scrotaled stout made, big bodied beef bull with extra base width and thickness from front to rear. His pathfinder dam is one of the top Right Times and recently sold in a group of top end females to Saddle River Ranch in OK. Lassie 521 is from the same cow family that produced Mc Cumber Hard Drive 7150, and descends from multiple generations of top cows that were not only phenotypically pleasing with depth, width, udder quality, and femininity, but have been predictable, problem free, and productive in every phase. Lassie 521 produced one of the top 4X13 sons in last year's sale, selling to Risse's UV Ranch in SD.

0133 has not only the power and performance to add pay weight, but is stacked with generations of proven cows that have stood the test of time.



Maternal brother • Mc Cumber 4X13 Extra 982



Dam • Lassie 521 of Mc Cumber



Maternal sister to dam • Lassie 974 of Mc Cumber



Mc Cumber Tremendous 019

Lot:

14 Mc Cumber Tremendous 019

Calved 1/21/2010
Reg. # 16684303

O C C Emblazon 854E
O C C Tremendous 619T
O C C Dixie Erica 960H

BT Traveler 228K
B Pride 2007 of Mc Cumber
Lassie 587 of Mc Cumber

D H D Traveler 6807
Dixie Erica of CH 1019
O C C Anchor 771A
O C C Dixie Erica 907C
Sitz Traveler 9929
BT Everelda Entense 57D
Papa Equator 2928
Lassie 648 of Mc Cumber

Ind. Record	
BW	84
WW	755
205	672
WR	101
ADG	3.53
YW	1,225
365	1,237
YR	101
IMF	2.84/81
REA	14.0/113
FAT	.21/70

EPDs										Dam's Prod.		
BW	WW	YW	Milk	SC	IMF	REA	Fat	\$W	\$B	BW	WW	YW
+3	+39	+70	+21	+.03	-.05	+.26	-.018	27.82	24.78	7-97	7-106	6-107

Selling 2/3 interest and full possession- Recommended for use on heifers- One of the most complete Tremendous sons that we have bred to date. 019 is a super attractive, clean made bull with an abundance of muscle and capacity. He weaned off his pathfinder dam at 755lbs. gained 3.53 lbs/day to ratio 102, and had a YW of 1225 lbs. This docile, calving ease herd sire prospect scanned a large REA of 14.0 to ratio 113 and has a REA/CWT of 1.21. This bull's dam has been a very productive light birth weight cow and is a 3rd consecutive generation pathfinder female. She has never missed settling AI and is nursing another top bull calf by Sinclair Entrepreneur 8R101 already this year. She has produced 4 sons 3 have of which have sold through past sales to Al DeClerk in AR, Glen Slaubaugh, and Joe Bohl in ND. Her other son sired by 6120 was retained for use here at Mc Cumber and is the sire to some of the bulls selling in this sale.

019 is a unique combination of calving ease, and forage efficiency in a very stylish clean made package.



Maternal brother • Mc Cumber 4X13 Extra 978



Grand dam • Lassie 587 of Mc Cumber



Mc Cumber Missing Link 031

Lot:

15 Mc Cumber Missing Link 031

Calved
1/24/2010

Reg. #
16696680

O C C Headliner 661H
O C C Missing Link 830M
O C C Dixie Erica 946K

Mc Cumber 7111 Total Value
Blackcap 5116 of Mc Cumber
Blackcap 988 of HC Mc Cumber

O C C Emblazon 854E
O C C Juanada 858F
O C C Glory 950G
O C C Dixie Erica 816B
Vermillion Dateline 7078
Miss Wix 7111 of McCumber
Papa Optima 9818
Papa Blackcap 9854

Ind. Record	
BW	83
WW	772
205	692
WR	104
ADG	3.35
YW	1,218
365	1,228
YR	101
IMF	2.76/79
REA	13.9/112
FAT	.40/133

EPDs										Dam's Prod.		
BW	WW	YW	Milk	SC	IMF	REA	Fat	\$W	\$B	BW	WW	YW
+ .3	+ 45	+ 72	+ 19	+ .30	-.06	+ .41	+ .019	31.22	22.52	2 - 91	2 - 100	2 - 97

Selling 2/3 interest and full possession-Recommended for use on heifers- Here is a real chunk by Missing Link, and a favorite of visitors to the Ranch all year. This easy going, big scrotaled, tank is one of the thickest, heaviest muscled bulls in the pen, and yet should be an easy calving, light birth weight bull. This stout made scamp weaned off his moderate framed, easy fleshing dam at 772 lbs. and pushed down the scale at 1218 lbs. at a year. His muscle definition is confirmed by his REA of 13.9 to ratio 112. His dam is a high volume, moderate framed, thick made cow that traces to an outstanding donor we purchased from Dale Davis' Papa Angus Ranch when he dispersed. 031 should not only sire those forage efficient, moderate framed females, but cattle that will perform from the pasture to the feedlot.

McCumber
Angus
Ranch

Cow herd known for
outstanding maternal traits

Lot:

16 Mc Cumber Paxton 039

Calved
1/25/2010

Reg. #
16696701

O C C Focus 813F
O C C Paxton 730P
O C C Blackbird 736K

GARRISON 8128 DYNAMITE
Miss Wix 8016 of Mc Cumber
Miss Wix 9007 of Mc Cumber

Basin Rainmaker 654X
Dixie Erica of C H 1019
O C C Great Plains 943G
O C C Blackbird 824G
Finks 5522-6148
Miss Wix 204 of Mc Cumber
Tehama Bando 155
Miss Wix 365 of Mc Cumber

Ind. Record	
BW	78
WW	725
205	730
WR	109
ADG	3.93
YW	1,248
365	1,359
YR	111
IMF	3.93/112
REA	12.9/104
FAT	.27/90

EPDs										Dam's Prod.		
BW	WW	YW	Milk	SC	IMF	REA	Fat	\$W	\$B	BW	WW	YW
+ .3	+ 44	+ 80	+ 18		+ .49	+ .19	+ .002	27.99	48.78	1 - 96	1 - 109	1 - 111



Mc Cumber Paxton 039

Selling 2/3 interest and full possession-Recommended for use on heifers- If your looking for one that excelled at every measure here he is. 039 weaned off his dam with a 205 day weight of 730 lbs to ratio 109, gained nearly 4.00 lbs/day to ratio 113, and earned a 365 day weight of 1359 lbs. to ratio 111. Along with this he had an IMF of 3.93 to ratio 112, and a REA of 12.9 to ratio 104 with a BF of only .27. In addition to his outstanding performance, and ultrasound, 039 is a deep bodied, heavy muscled bull with a big scrotal and the look of a beef bull. His dam is a highly productive daughter of Garrison Dynamite 8128,



Paternal Sister to Dam • Miss Wix 2027 of Mc Cumber

who is best known as the sire of Miss Wix 2027 of Mc Cumber. 039 has an outcross pedigree for most of our customers, as well as most of the Angus breed. He has done it all from performance to carcass and is backed by the fertile, productive, problem free Miss Wix cow family



Mc Cumber 829 Extra 072

Lot:

17 Mc Cumber 829 Extra 072

Calved
1/29/2010

Reg. #
16684379

Sinclair Extra 4X13
Mc Cumber 4X13 Extra 829
Miss Wix 6114 of Mc Cumber

N Bar Emulation EXT
N Bar Lady Ida S C C 2P37
S A V 8180 Traveler 004
Miss Wix 2027 of Mc Cumber
Mc Cumber 054 Rito 5009
G P Blackbird 1901
Mr Wix of Mc Cumber 204
Lassie 5128 of Mc Cumber

Hilltop Rito H218
Lassie 0139 of Mc Cumber
Lassie 708 of Mc Cumber

EPDs										Dam's Prod.		
BW	WW	YW	Milk	SC	IMF	REA	Fat	\$W	\$B	BW	WW	YW
+4.1	+49	+89	+22		+.28	+.07	+.065	22.36	37.64	9-105	9-105	9-105

072 is an extremely heavy muscled, high performing son of the up and coming Mc Cumber 4x13 Extra 829. This bull exhibits as much muscularity, and expression as any bull in the pen. Along with this he performed well with an actual WW of 730 lbs, an ADG of 3.89 lbs/day to ratio 112, and a 365 day weight of 1295 lbs. to ratio 106. Additionally, he had a REA of 14.3 to ratio 115 which reaffirms the extra muscle he displays. His highly productive, long lived pathfinder dam has a WWR 9@105, YWR 9@105, IMF 9@106, and REA 9@101. She has produced many sons that have sold through past Mc Cumber sales to Bruce Diebold, Scott Smith, Arlen Vollmer, and Cudworth Bros. in ND, Four Ace Angus in MN, and Rustin Smith in NV. Looking for a cow bull to add pounds, muscle, and performance? 072 may fit the bill.

Ind. Record	
BW	94
WW	730
205	673
WR	101
ADG	3.89
YW	1,248
365	1,295
YR	106
IMF	3.35/96
REA	14.3/115
FAT	.40/133



Mc Cumber 4X13 Extra 086

Lot:

18 Mc Cumber 4X13 Extra 086

Calved
1/31/2010

Reg. #
16684388

N Bar Emulation EXT
Sinclair Extra 4X13
N Bar Lady Ida S C C 2P37

S A V 8180 Traveler 004
B Pride 404 of Mc Cumber
B Pride 2010 of Mc Cumber

Emulation N Bar 5522
N Bar Primrose 2424
N Bar Prime Time D806
N Bar Lady Ida F1080
Sitz Traveler 8180
Boyd Forever Lady 8003
Mc Cumber 054 Rito 326
B Pride 5122 of Mc Cumber

Ind. Record	
BW	92
WW	760
205	693
WR	104
ADG	3.71
YW	1,253
365	1,287
YR	105
IMF	4.83/138
REA	11.7/94
FAT	.44/147

EPDs										Dam's Prod.		
BW	WW	YW	Milk	SC	IMF	REA	Fat	\$W	\$B	BW	WW	YW
+1.8	+42	+77	+25	-.13	+.58	-.27	+.061	28.27	4.03	5-98	5-106	4-104

Selling 2/3 interest and full possession- 086 is the product of a mating that has been outstanding here at Mc Cumber, resulting in progeny that are not only light birth weight, but have outstanding performance, and females that are fertile, functional, and problem free. 086 is a full brother to one of the high selling bulls in last year's sale for \$8750 to Joe Bohl, and a maternal brother to another high selling lot in our 2008 bull sale for \$8000 to NLC Simmental in SD. 086 is sound structured, deep bodied, and thick. Along with this, he is big scrotaled, easy going, and will catch your eye in the pen. His performance is outstanding as well with a WW of 760 lbs, an ADG of 3.71, and a 365 day weight of 1287 lbs. to ratio 105. He earned one of the top IMF scores of 4.83 to ratio 138. His dam is one of my favorites and would rank near the top of all the cows on the Ranch. B Pride 404 is an absolute tank, with a tremendous amount of capacity. She is moderate framed, good footed, and nice uddered. In addition to this her production, fertility, and disposition has been excellent. She herself has not only been productive, but for many generations behind her. 404 was flushed this spring for the first time in an effort to get some daughters back in the herd. Her only daughter sold as a feature heifer calf of our 2006 Female sale to Gary Liebrand in MT for \$5250.

086 should be a predictable sire of sound, fertile, problem free females, and males with added depth, thickness and performance.



Full sister as a calf • B Pride 613 of Mc Cumber



Full Brother • Mc Cumber 4X13 Extra 9180

Lot:

19 Mc Cumber 4X13 Extra 0103

Ind. Record	
BW	83
WW	703
205	664
WR	99
ADG	4.02
YW	1,238
365	1,307
YR	107
IMF	4.80/137
REA	13.0/105
FAT	.52/173

Calved
2/3/2010

Reg. #
16684220

N Bar Emulation EXT
Sinclair Extra 4X13
N Bar Lady Ida S C C 2P37

S A V 8180 Traveler 004
Gale 6110 of Mc Cumber
Gale 836 of Mc Cumber

Emulation N Bar 5522
N Bar Primrose 2424
N Bar Prime Time D806
N Bar Lady Ida F1080
Sitz Traveler 8180
Boyd Forever Lady 8003
Circle Oak Lucys Boy 625
Gale 6129 of Mc Cumber

EPDs											Dam's Prod.		
BW	WW	YW	Milk	SC	IMF	REA	Fat	\$W	\$B		BW	WW	YW
+ .3	+ 41	+ 77	+ 21		+ .62	-.17	+ .069	26.98	41.75		3 - 97	3 - 97	3 - 97

Recommended for use on heifers- 0103 is another top-notch product of the predictable mating of 4X13 X 004. This thick made, square rumped, calving ease prospect is one of the high gaining bulls in the sale. He gained 4.02 lbs/day to ratio 116 and earned a 365 day weight of 1307 lbs. to ratio 107. To go along with this, he scanned an IMF of 4.80 to ratio 137 and had a REA of 13.0 to ratio 105. His top IMF score earned him one the highest IMF EPDs in the sale. His dam is a high volume, easy fleshing daughter of 004 and a maternal sister to a past sale topper Mc Cumber 7078 VRD 3116. She has been a consistent producer of good scanning progeny with an IMF of 3@125, and a REA of 3@100. Lot 18 and 19 would make a neat pair of bulls to turn out for producing a top set of replacements with carcass, performance, and maternal bred in.

Lot:

20 Mc Cumber 536P EXT 0106

Ind. Record	
BW	82
WW	763
205	718
WR	107
ADG	3.17
YW	1,185
365	1,225
YR	100
IMF	4.45/127
REA	12.0/97
FAT	.30/100

Calved
2/3/2010

Reg. #
16684223

N Bar Emulation EXT
Sitz JLS Emulation EXT 536P
Ideal 4465 of 6807 4286

Mc Cumber Total Value 449
Lassie 689 of Mc Cumber
Lassie 2158 of Mc Cumber

Emulation N Bar 5522
N Bar Primrose 2424
D H D Traveler 6807
E E 4286 of Ideal 2240 1254
Mc Cumber 7111 Total Value
Miss Wix 7007 of Mc Cumber
Leachman Right Time
Lassie 272 of Mc Cumber

EPDs											Dam's Prod.		
BW	WW	YW	Milk	SC	IMF	REA	Fat	\$W	\$B		BW	WW	YW
+ .5	+ 34	+ 57	+ 27	-.22	+ .26	-.07	+ .012	28.84	32.36		3 - 88	3 - 102	3 - 100

Selling 2/3 interest and full possession- Recommended for use on heifers- This good looking, deep bodied, thick made son of 536P is one of the best he has sired. This good natured, easy fleshing calving ease prospect weaned off his dam at 763 lbs. and earned a 205 day weight of 718 lbs. to ratio 107. 536P is one of the most impressive mature bulls you will see, and 0106 is a near replica. 0106 scanned well with an IMF of 4.45 to ratio 127 and had a REA of 12.0. The 536P daughters are turning into some of the top cows on the Ranch. 0106's dam is a modest sized, good uddered, highly productive, light birth weight daughter of Mc Cumber Total Value 449 who has group of daughters here that are extremely productive, fertile, and seem to reduce birth weight no matter what bull they are bred to. Lassie 689 has a BWR 3@83, WWR 3@102, and YWR 3@100. She has settled AI every year and is currently nursing a super heifer calf by Mc Cumber 4x13 Extra 829. Her dam Lassie 2158 of Mc Cumber is a full sister to the dam of Mc Cumber Hard Drive 7150 and sold through our 2009 Female sale to Frank Taylor at Spring Valley Angus in NE.

0106 has the bred in ability to sire fertile, good uddered, easy fleshing females that would benefit even the top cowherds. This calving ease prospect is one to find.



Sire • Sitz JLS Emulation EXT 536P

Lot:

21 Mc Cumber Tremendous 0156

Ind. Record	
BW	80
WW	700
205	743
WR	111
ADG	3.38
YW	1,150
365	1,284
YR	105
IMF	3.21/92
REA	14.4/116
FAT	.26/87

Calved
2/15/2010

Reg. #
16684269

O C C Emblazon 854E
O C C Tremendous 619T
O C C Dixie Erica 960H

Mc Cumber 004 Traveler 513
Rosetta 855 of Mc Cumber
Rosetta 4006 of Mc Cumber

D H D Traveler 6807
Dixie Erica of C H 1019
O C C Anchor 771A
O C C Dixie Erica 907C
S A V 8180 Traveler 004
Miss Wix 301 of Mc Cumber
Mc Cumber Equator 6122
Rosetta 421 of Mc Cumber

EPDs											Dam's Prod.		
BW	WW	YW	Milk	SC	IMF	REA	Fat	\$W	\$B		BW	WW	YW
-.1	+ 46	+ 75	+ 20		-.01	+ .39	+ .016	31.85	27.68		1 - 99	1 - 111	1 - 105

Selling 2/3 interest and full possession- Recommended for use on heifers- Here is one stylish, smooth made, heavy muscled son of OCC Tremendous 619T. 0156 is sure to catch your eye. This thick quartered, square rumped, calving ease prospect weaned off his dam with a 205 day weight of 743 lbs. to ratio 111 as his dam's first calf. In addition, he earned a 365 day weight of 1284 lbs. to ratio 105 and had one of



B Pride 030 of Mc Cumber an OCC Tremendous 619T daughter

the largest REA of the calf crop with a REA 14.4 to ratio 116. His REA/CWT of 1.32 is right at the top of the group. His dam is an easy fleshing, neat uddered daughter of 513. Her dam is a full sister to Mc Cumber 6122 Equator 8113, who left many good daughters here.

You won't have trouble finding this good looking rascal.





Lot:

22 Mc Cumber 004 Traveler 003

Calved 2/4/2010
Reg. # 16694082

Sitz Traveler 8180
S A V 8180 Traveler 004
Boyd Forever Lady 8003

Sitz Traveler 9929
B Pride 9124 of Mc Cumber
B Pride 839 of Mc Cumber

G D A R Traveler 71
Sitz Everelda Entense 1137
A A R New Trend
S V F Forever Lady 57D
D H D Traveler 6807
Sitz Everelda Entense 1137
P J M Power 291
B Pride 134 of Mc Cumber

Ind. Record	
BW	84
WW	800
205	736
WR	100
ADG	3.38
YW	1,250
365	1,277
YR	100
IMF	3.41/81
REA	12.2/92
FAT	.32/89

EPDs										Dam's Prod.		
BW	WW	YW	Milk	SC	IMF	REA	Fat	\$W	\$B	BW	WW	YW
+3.8	+42	+78	+21	+.30	+.08	-.09	+.044	2.89	29.94	7-101	7-106	5-104

Selling 2/3 interest and full possession- 003 is a flush brother to the herd bull prospect selling as Lot 4 in this sale. In reality, there is really not much difference in these two bulls. 003 is a long bodied, thick butted, big weaning bull that came off his recipient dam at 800 lbs. His pathfinder, donor dam is a big bodied, easy fleshing, good footed daughter of Sitz Traveler 9929. She is no stranger to producing herd bulls with one son selling to Lindskov Angus in SD for \$7000, and two full brothers to 003 selling in our 2008 bull sale to Scott Bradac in ND. His dam sold as a feature of our 2006 Female sale to Fortune's Rafter U Cross Ranch in SD where she is still in production and being flushed.

These two flush brothers would make a nice pair to turn out for a more consistent calf crop.



Dam • B Pride 9124 of Mc Cumber

Lot:

23 Mc Cumber Missing Link 028

Calved 1/23/2010
Reg. # 16696678

O C C Headliner 661H
O C C Missing Link 830M
O C C Dixie Erica 946K

BT Right Time 24J
Miss Wix 585 of Mc Cumber
Miss Wix 3027 of Mc Cumber

O C C Emblazon 854E
O C C Juanada 858F
O C C Glory 950G
O C C Dixie Erica 816B
Leachman Right Time
Sitz Everelda Entense 1905
Mc Cumber 124 Traveler 212
Miss Wix 5168 of Mc Cumber

Ind. Record	
BW	92
WW	775
205	694
WR	104
ADG	3.41
YW	1,228
365	1,240
YR	101
IMF	3.15/90
REA	13.0/105
FAT	.31/103

EPDs										Dam's Prod.		
BW	WW	YW	Milk	SC	IMF	REA	Fat	\$W	\$B	BW	WW	YW
+2.4	+43	+73	+21		-.09	+.29	-.008	26.66	21.87	3-109	3-103	3-104

Selling 2/3 interest and full possession- This masculine, muscular, stout made Missing Link is sure to please. 028 is a heavy muscled, big bodied herd bull prospect that weaned off his dam at 785 lbs. without creep. 028 has been a favorite since he was a baby. He has displayed exceptional muscle from the start and scanned a REA of 13.0 to ratio 105. His big middled, easy fleshing dam is a daughter of BT Right Time 24J and was produced from the same branch of the Miss Wix family that produced Mc Cumber Foundation 701 and Miss Wix 918 of Mc Cumber who was so successful for Shady Brook in TN. Miss Wix 585 has been productive as well with a WWR 3@103, and a YWR 3@104.

This legitimate beef bull could really sire a stout set of steers, and females with longevity, adaptability, and fleshing ease.



Maternal brother to dam • Mc Cumber Timberwolf 7141



Mc Cumber Tremendous 0011

Lot:

24 Mc Cumber Tremendous 0011

Calved
1/19/2010

Reg. #
16851135

O C C Emblazon 854E
O C C Tremendous 619T
O C C Dixie Erica 960H

Sinclair Extra 4X13
Gale 866 of Mc Cumber
Gale 447 of Mc Cumber

D H D Traveler 6807
Dixie Erica of C H 1019
O C C Anchor 771A
O C C Dixie Erica 907C
N Bar Emulation EXT
N Bar Lady Ida S C C 2P37
Boyd New Day 8005
Gale 1124 of Mc Cumber

Ind. Record	
BW	69
WW	790
205	777
WR	103
ADG	3.23
YW	1,220
365	1,294
YR	100
IMF	4.75/115
REA	13.5/97
FAT	.25/86

EPDs										Dam's Prod.		
BW	WW	YW	Milk	SC	IMF	REA	Fat	\$W	\$B	BW	WW	YW
+1.2	+43	+70	+17		+.20	+.14	+.008	29.20	36.04	1-102	1-103	1-100

Selling 2/3 interest and full possession- Recommended for use on heifers- I had a customer ask for a butane tank on legs one time. Well this is as close as we have gotten. 0011 is a real load. This moderate framed, tremendously deep bodied calving ease herd bull prospect weaned and weighed off test right with bulls with quite a bit more frame. 0011 weaned off at nearly 800 lbs. as his dam's first calf and earned nearly a 1300 lb. 365 day weight, while only starting life at 69 lbs. This big bodied, wide made bull has attracted some looks because of his overall mass. I would call him a changer and without a doubt the kind that would thrive in a forage environment. He possesses the capacity to consume enough forage to perform in a grass environment. His 4x13 dam is neat uddered with small well placed teats, and snug attachment. She is produced from 3 consecutive generations of Gale pathfinders and is off to good start as well.



Great Grand dam • Gale 1124 of Mc Cumber

I am sure this bull won't be for everybody, but if you are serious about moderation, calving ease, body mass and the ability to get it done in a forage environment, then 0011 is definitely worth a look.

Lot:

25 Mc Cumber Tremendous 0130

Calved
2/6/2010

Reg. #
16684246

O C C Emblazon 854E
O C C Tremendous 619T
O C C Dixie Erica 960H

Sinclair Extra 4X13
Miss Wix 731 of Mc Cumber
Miss Wix 5124 of Mc Cumber

D H D Traveler 6807
Dixie Erica of C H 1019
O C C Anchor 771A
O C C Dixie Erica 907C
N Bar Emulation EXT
N Bar Lady Ida S C C 2P37
Mc Cumber 7111 Total Value
Miss Wix 1059 of Mc Cumber

Ind. Record	
BW	94
WW	749
205	736
WR	110
ADG	3.35
YW	1,195
365	1,272
YR	104
IMF	3.39/97
REA	12.4/100
FAT	.35/117

EPDs										Dam's Prod.		
BW	WW	YW	Milk	SC	IMF	REA	Fat	\$W	\$B	BW	WW	YW
+2.5	+46	+72	+18		+.16	+.06	+.014	28.20	3.03	2-102	2-110	2-108

This good performing son of OCC Tremendous 619T is long, deep, and thick. He earned a 205 day weight of 736 lbs. to ratio 110, and has a 365 day weight of 1272 to ratio 105. His dam is a neat uddered, productive daughter of 4X13 and has ratios of BW 2@102, WWR 2@110, YWR 2@110, IMF 2@98, and REA 2@107. Her first calf sold as a feature of our 2009 Female sale to Dubas Cattle Co. for \$2800 as a weaned heifer calf. Her excellent dam is a triple bred Miss Wix with a WWR 4@105 and an easy fleshing, good uddered daughter of Total Value.

The combination of 619T X 4X13 ensures adaptable, forage efficient cattle with plenty of performance and muscle. There are several of these 3/4 brothers selling through this sale, and some of the very best heifers in the replacement pen are a result of this mating.

Lot:

26 Mc Cumber 829 Extra 0107

Calved
2/3/2010

Reg. #
16684224

Sinclair Extra 4X13
Mc Cumber 4X13 Extra 829
Miss Wix 6114 of Mc Cumber

Mc Cumber 155 BANDO 214
Miss Wix 4144 of Mc Cumber
Miss Wix 1119 of Mc Cumber

N Bar Emulation EXT
N Bar Lady Ida S C C 2P37
S A V 8180 Traveler 004
Miss Wix 2027 of Mc Cumber
Tehama Bando 155
Miss Wix 365 of Mc Cumber
Mc Cumber Ferdinand 896
Miss Wix 8002 of Mc Cumber

Ind. Record	
BW	97
WW	768
205	706
WR	106
ADG	3.40
YW	1,220
365	1,250
YR	102
IMF	3.68/105
REA	11.2/90
FAT	.37/123

EPDs										Dam's Prod.		
BW	WW	YW	Milk	SC	IMF	REA	Fat	\$W	\$B	BW	WW	YW
+3.1	+48	+78	+23		+.19	-.15	+.040	27.32	3.84	5-106	5-102	4-100

I think you will really like this sire group of Mc Cumber 4X13 Extra 829 for moderate birth weights, and additional pounds at both weaning and yearling. 0107 is a sound structured big scrotaled bull with depth of body, and plenty of natural thickness. He weaned off his good milking

dam at 768 lbs. and earned a WWR of 106. His double bred Miss Wix 365 bred dam has produced 2 sons that sold to Mongeon Bros and Vegas Varty in ND. This good looking, long bodied, deep bodied bull is bred for consistency, and should help add to your bottom line.



Sire • Mc Cumber 4X13 Extra 829



Mc Cumber Missing Link 096

Lot:

27 Mc Cumber Missing Link 096

Calved
2/1/2010

Reg. #
16696677

O C C Headliner 661H
O C C Missing Link 830M
O C C Dixie Erica 946K

Sinclair Extra 4X13
Erianna 7121 of Mc Cumber
Erianna 5144 of Mc Cumber

O C C Emblazon 854E
O C C Juanada 858F
O C C Glory 950G
O C C Dixie Erica 816B
N Bar Emulation EXT
N Bar Lady Ida S C C 2P37
Sitz Alliance 6595
Erianna 3216 of Mc Cumber

Ind. Record	
BW	84
WW	721
205	701
WR	105
ADG	3.47
YW	1,182
365	1,256
YR	103
IMF	2.58/74
REA	11.9/96
FAT	.20/67

EPDs										Dam's Prod.		
BW	WW	YW	Milk	SC	IMF	REA	Fat	\$W	\$B	BW	WW	YW
+ .9	+ 44	+ 74	+ 22	+ .07	+ .00	+ .02	+ .012	3.15	26.25	2 - 92	2 - 108	2 - 101

Recommended for use on heifers- The Missing Link X 4X13 mating has worked very well here at Mc Cumber. This spring we had nearly 40 ¾ sibs born to this bull. 096 is a long bodied, thick made bull with a large scrotum, and calm demeanor. He is a long striding, clean made bull with early growth, and plenty of performance. His highly productive 4X13 dam is off to a good start with a BWR 2@92, WWR 2@108, YWR 2@101, and a REA 2@104. His maternal brother by Tremendous was one of the largest Ribeye bulls in last year's sale, and sold to Red Rock Ranch in SD for \$4000. A pedigree stacked with Missing Link, 4x13, and Alliance should ensure light birth, fast growing progeny, and females bred for adaptability, fertility, and forage efficiency.

McCumber
Angus
Ranch



Cow herd known for
outstanding maternal traits

Chuck Tastad Family
RR1 • Box 128
Rolette, ND 58366
Chuck (701) 246-3366
Matt (701) 246-3547
Email: mccumber@utma.com
www.mccumberangus.com
Located 1 mile west, 1/4 south
of Rolette



Mc Cumber 780 Emblazon 085

Lot:

28 Mc Cumber 780 Emblazon 085

Calved
1/31/2010

Reg. #
16844519

O C C Emblazon 854E
Coleman Emblazon 780
Bohi Lady 1165

Mc Cumber Total Value 449
Miss Wix 748 of Mc Cumber
Miss Wix 5206 of Mc Cumber

D H D Traveler 6807
Dixie Erica of CH 1019
N Bar Emulation EXT
Ideal 4465 of 6807 4286
Mc Cumber 7111 Total Value
Miss Wix 7007 of Mc Cumber
BT Traveler 228K
Miss Wix 332 of Mc Cumber

Ind. Record	
BW	90
WW	715
205	694
WR	104
ADG	3.27
YW	1,150
365	1,217
YR	100
IMF	2.81/80
REA	12.7/102
FAT	.27/90

EPDs										Dam's Prod.		
BW	WW	YW	Milk	SC	IMF	REA	Fat	\$W	\$B	BW	WW	YW
+ 1.5	+ 39	+ 71	+ 25		+ .01	+ .21	-.003	26.85	21.70	2 - 101	2 - 107	2 - 108

Selling 2/3 interest and full possession- This stout made, super stylish son of Coleman Emblazon 780, will catch your eye with his extra muscle expression, big scrotal, and good looks. 085 just misses our parameters as a calving ease bull, but after a year on cows to see how he calves, he may well work on heifers. He earned a WWR of 104 as his dam's second calf and has been catching my eye all winter. Emblazon 780 was the high selling bull in Coleman's 2009 sale to Circle V Ranch in ND. 780's dam is a full sister to our resident herd sire 536P, and is an impressive, powerful female whose progeny have consistently been some of the highest valued cattle in past Coleman sales. 085's dam has been a no miss female and is a highly productive, fertile daughter of Mc Cumber Total Value 449. She produced one of the top 4x13 sons in last year's bull sale selling to Marohl's Yellow Top Angus in ND, and is already nursing a super heifer calf by Mc Cumber Missing Link 9112 this year. She is well on her way to pathfinder status with a WWR of 2@107 and a YWR of 2@108. This is a good one with an outcross pedigree for most of our customers.



Maternal brother • Mc Cumber 4X13 Extra 9137



Mc Cumber 536P EXT 0180

Lot:

29 Mc Cumber 536P EXT 0180

Calved
2/28/2010

Reg. #
16684295

N Bar Emulation EXT
Sitz JLS Emulation EXT 536P
Ideal 4465 of 6807 4286

Pine Creek Right Time 1147
B Pride 463 of Mc Cumber
B Pride 273 of Mc Cumber

Emulation N Bar 5522
N Bar Primrose 2424
D H D Traveler 6807
E E 4286 of Ideal 2240 1254
Leachman Right Time
Sitz Everelda Entense 1137
BT Traveler 228K
B Pride 690 of Mc Cumber

Ind. Record	
BW	92
WW	718
205	709
WR	106
ADG	3.06
YW	1,125
365	1,199
YR	98
IMF	3.76/107
REA	11.6/94
FAT	.20/67

EPDs										Dam's Prod.		
BW	WW	YW	Milk	SC	IMF	REA	Fat	\$W	\$B	BW	WW	YW
+3.5	+37	+62	+31	-.42	+.17	-.11	+.001	24.44	33.61	5 - 102	5 - 114	5 - 108

Lot:

30 Mc Cumber 829 Extra 058

Calved
1/27/2010

Reg. #
16684363

Sinclair Extra 4X13
Mc Cumber 4X13 Extra 829
Miss Wix 6114 of Mc Cumber

Mc Cumber 2700 Rt Time 582
Gale 8213 of Mc Cumber
Gale 3109 of Mc Cumber

N Bar Emulation EXT
N Bar Lady Ida S C C 2P37
S A V 8180 Traveler 004
Miss Wix 2027 of Mc Cumber
Leachman Right Time
Gale 120 of Mc Cumber
Mc Cumber Foundation 701
Gale 6169 of Mc Cumber

Ind. Record	
BW	70
WW	712
205	721
WR	108
ADG	3.68
YW	1,202
365	1,310
YR	107
IMF	3.88/111
REA	11.2/90
FAT	.36/120

EPDs										Dam's Prod.		
BW	WW	YW	Milk	SC	IMF	REA	Fat	\$W	\$B	BW	WW	YW
+.2	+46	+81	+24		+.29	-.26	+.058	29.83	29.57	1 - 87	1 - 108	1 - 107

Recommended for use on heifers- Another top performing, deep bodied, sound structured son of Mc Cumber 4x13 Extra 829. 058 started life at 70 lbs, but went on to earn a 205 day weight of 721 lbs. to ratio 108 as his dam's first calf. Along with this, he gained 3.68 lbs/day to ratio 106, recorded a 365 day weight of 1310 lbs. to ratio 107, and had an IMF of 3.88 to ratio 111. His double bred Foundation 701, and triple bred Miss Wix 365 of Mc Cumber dam, is neat uddered with small well placed teats, and proper attachment both fore and rear. Gale 8213 is a feminine fronted, deep bodied, good footed Right Time grand daughter stacked with many generations of cow maker sires.

We have 829 calves on the ground and expect to use him even heavier, however 058 has excelled at nearly every measure and his dam is backed by an outstanding maternal heritage.



Dam • B Pride 463 of Mc Cumber



Maternal brother • Mc Cumber 4X13 Extra 975



Mc Cumber 6120 Traveler 8144

Selling 2/3 interest and full possession- When it comes to siring productive, fertile, easy fleshing, good uddered females it might not get much better than 0180 in this department. This late February 536P son weaned off his pathfinder dam with a 205 day weight of 706 lbs. to ratio 106 and had an IMF of 3.76 to ratio 107. 0180 is a high libido bull with length, soundness and plenty of muscle. His pathfinder dam is one of the all time top cows here at Mc Cumber. She is a big bodied, naturally thick daughter of Pine Creek Right Time 1147. 463 is a fertile, easy fleshing, good footed, neat uddered cow that doesn't miss. She is the dam to last year's sale topper at \$10,500 to Haugen Cattle Company, and has produced a total of 3 sons that have sold for an average of nearly \$8700. Her other two sons have both sold to long time customer Joe Bohl in ND, and her only daughter is the dam to the herd sire prospect selling as Lot 2 in this sale. She has been one of the highest rationing cows in the herd with a WWR 5@114, YWR 5@108, IMF 5@110, and calving interval of 6@366. B Pride 463 will enter the donor pen this spring in order to add more daughters to our herd.

0180 would be near the top of my list for siring outstanding, problem free females.



Mc Cumber 829 Extra 058

Lot:

31 Mc Cumber 751 Extra 057

Calved
1/27/2010

Reg. #
16684362

Sinclair Extra 4X13
Mc Cumber 4X13 Extra 751
Miss Wix 5139 of Mc Cumber

S A V 8180 Traveler 004
Lassie 725 of Mc Cumber
Lassie 0139 of Mc Cumber

N Bar Emulation EXT
N Bar Lady Ida S C C 2P37
BT Right Time 24J
Miss Wix 7111 of Mc Cumber
Sitz Traveler 8180
Boyd Forever Lady 8003
Hilltop Rito H218
Lassie 708 of Mc Cumber

Ind. Record	
BW	76
WW	722
205	693
WR	104
ADG	3.43
YW	1,178
365	1,242
YR	102
IMF	3.38/97
REA	12.4/100
FAT	.38/127

EPDs										Dam's Prod.		
BW	WW	YW	Milk	SC	IMF	REA	Fat	\$W	\$B	BW	WW	YW
+ .2	+ 43	+ 73	+ 24		+ .35	+ .00	+ .059	3.28	36.28	2 - 88	2 - 103	2 - 102

Recommended for use on heifers- 057 is a bit bigger framed son of Mc Cumber 4x13 Extra 751, who is the proven calving ease, good carcass bull working in the Nelson Angus herd in ID. 057 is a long bodied, smooth fronted bull with above average weaning performance, and calving ease bred in. His dam is a beautiful, neat uddered, easy fleshing daughter of 004 produced from 2 consecutive generations of Lassie pathfinders. She has produced 3 calves with an average birth weight of 71 lbs, a BWR of 2@88, WWR 2@103, YWR 2@102, and IMF 2@101.

Lot:

32 Mc Cumber 536P EXT 054

Calved
1/27/2010

Reg. #
16684360

N Bar Emulation EXT
Sitz JLS Emulation EXT 536P
Ideal 4465 of 6807 4286

Leachman Right Time
Miss Wix 503 of Mc Cumber
Miss Wix 201 of Mc Cumber

Emulation N Bar 5522
N Bar Primrose 2424
D H D Traveler 6807
E E 4286 of Ideal 2240 1254
N Bar Emulation EXT
Leachman Erica 0025
Tehama Bando 155
Miss Wix 365 of Mc Cumber

Ind. Record	
BW	86
WW	735
205	664
WR	99
ADG	3.55
YW	1,207
365	1,232
YR	100
IMF	3.35/96
REA	11.2/90
FAT	.35/117

EPDs										Dam's Prod.		
BW	WW	YW	Milk	SC	IMF	REA	Fat	\$W	\$B	BW	WW	YW
+ .9	+ 34	+ 60	+ 24	-.28	+ .12	-.17	+ .003	26.89	29.21	4 - 102	4 - 102	4 - 102

Recommended for use on heifers- 054 is a light birth, calving ease prospect sired by 536P. His maternally packed pedigree should ensure his ability to sire outstanding females. His dam is a grand daughter of Miss Wix 365 and displays the outstanding fertility and productivity the Miss Wix cow family is known for. Miss Wix 503 of Mc Cumber has never



Great Grand dam • Miss Wix 365 of Mc Cumber

missed settling AI and has a calving interval of 5@364. Along with this, she has WWR 4@102, and YWR 4@102. This maternally strong calving ease prospect should not only sire top cows, but males with plenty of performance.



Lot:

33 Mc Cumber 8101 Traveler 0195

Calved
3/12/2010

Reg. #
16684309

Mc Cumber 004 Traveler 6120
Mc Cumber 6120 Traveler 8101
B Pride 2007 of Mc Cumber

Boyd New Day 8005
Rosetta 562 of Mc Cumber
Rosetta 961 of Mc Cumber

S A V 8180 Traveler 004
Erianna 2206 of Mc Cumber
BT Traveler 228K
Lassie 587 of Mc Cumber
A A R New Trend
S V F Forever Lady 57D
Mr Wix of Mc Cumber 204
Rosetta 4117 of Mc Cumber

Ind. Record	
BW	90
WW	714
205	736
WR	110
ADG	3.40
YW	1,166
365	1,280
YR	105
IMF	3.24/93
REA	12.6/102
FAT	.20/67

EPDs										Dam's Prod.		
BW	WW	YW	Milk	SC	IMF	REA	Fat	\$W	\$B	BW	WW	YW
+ 2.8	+ 46	+ 81	+ 27		+ .16	-.08	+ .005	26.24	36.09	3 - 90	4 - 104	4 - 101

This mid-March grandson of Mc Cumber 004 Traveler 6120 performed admirably from the start. 0195 is a long bodied, deep ribbed, sound structured bull with a large scrotal and plenty of muscle. In addition, he earned a 205 day weight of 736 lbs to ratio 110, and recorded a 365 day weight of 1280 lbs to ratio 105. His neat uddered, productive dam has earned a WWR 4@104, and YWR 4@101. Although 0195 is one of the younger bulls in the sale. He has completed and performed well among his contemporaries.



Tastad Cookout

Lot:

34 Mc Cumber 6536 Rainmaker 027

Ind. Record	
BW	86
WW	750
205	671
WR	100
ADG	3.50
YW	1,215
365	1,231
YR	100
IMF	2.78/79
REA	12.6/102
FAT	.31/103

Calved
1/23/2010

Reg. #
16684339

Sitz Rainmaker 6169
Sitz Rainmaker 6536
Sitz Elsiemere 331

Sitz Rainmaker 8987
Sitz Barbaramere Jet 3007
Sitz Alliance 6595
Sitz Elsiemere 1909
N Bar Emulation EXT
Leachman Erica 0025
Mc Cumber 124 Traveler 212
Miss Wix 063 of Mc Cumber

Leachman Right Time
Miss Wix 4001 of Mc Cumber
Miss Wix 498 of Mc Cumber

EPDs										Dam's Prod.		
BW	WW	YW	Milk	SC	IMF	REA	Fat	\$W	\$B	BW	WW	YW
+1.4	+37	+73	+26		+.03	-.02	+.032	25.01	18.76	5-93	5-104	5-103

Recommended for use on heifers- 027 is a ruggedly built, deep ribbed, long bodied Rainmaker 6536. He weaned off his pathfinder Right Time dam at 750 lbs and should be a safe bet on heifers. His deep bodied, easy fleshing dam has been a very light birth, productive cow. She has had 5 calves with an average birth weight of 76 lbs, and has a BWR of 5@93. Along with this, her production has been very good as well, with a WWR 5@105, and YWR 5@103. Her pedigree is stacked with proven, problem free bulls like Right Time, Mc Cumber 124 Traveler 212, Rito 054, and 376. Her first daughter in production here weaned our high indexing heifer this fall, and has weaned 3 calves with a nursing ratio of 116. One of those calves was the 6536 heifer featured in our 2009 Female sale that sold to Terry Little in MO.



Mc Cumber 6536 Rainmaker 027

Lot:

35 Mc Cumber Tremendous 069

Ind. Record	
BW	87
WW	750
205	680
WR	102
ADG	3.22
YW	1,178
365	1,195
YR	98
IMF	2.98/85
REA	14.1/114
FAT	.25/83

Calved
1/29/2010

Reg. #
16684375

O C C Emblazon 854E
O C C Tremendous 619T
O C C Dixie Erica 960H

D H D Traveler 6807
Dixie Erica of CH 1019
O C C Anchor 771A
O C C Dixie Erica 907C
Leachman Right Time
Sitz Everelda Entense 1137
BT New Trend 172K
Lassie 914 of Mc Cumber

Pine Creek Right Time 1147
Lassie 434 of Mc Cumber
Lassie 2140 of Mc Cumber

EPDs										Dam's Prod.		
BW	WW	YW	Milk	SC	IMF	REA	Fat	\$W	\$B	BW	WW	YW
+.8	+44	+70	+18	+.25	+.03	+.29	+.000	3.25	24.72	5-104	5-108	5-104

Selling 2/3 interest and full possession- This big boned, extra stout son of OCC Tremendous 619T has been a favorite of mine all year. He is arguably the most expressively muscled bull in this sale and will definitely catch your eye when you enter the pen. This big srotaled, heavy muscled beef bull is good footed, and possesses extra shape to his top and rear quarter. He weaned off at 750 lbs and has one of the largest REA in the sale with a REA of 14.1 to ratio 114. He would normally fit the parameters of a calving ease bull for us, but his extra stoutness probably limits his use in that capacity. His herd sire producing, pathfinder dam is a no miss female, and has produced a number of top bulls through previous bull sales. She has a WWR 5@108, YWR 5@104, IMF 5@108, REA 5@110, and a calving interval of 6@367. Her 4 previous sons have sold for an average of nearly \$6000 to top cattlemen including Current Creek Angus MT, Chapman Cattle Co. AB CAN, Ron Slaubaugh ND, and Rodney Schatz ND. She is already nursing a herd bull candidate by Sinclair Entrepreneur 8R101 this year.

This bulls unique good looks, extra muscle, and stoutness is sure to make him a sale day favorite.



Mc Cumber Tremendous 069



Maternal brother to Lot 35 •
Mc Cumber 536P EXT 8194



Maternal brother to Lot 35 • Mc Cumber 449 T Value 633

Lot:

36 Mc Cumber 4X13 Extra 03

Calved
1/18/2010

Reg. #
16684341

N Bar Emulation EXT
Sinclair Extra 4X13
N Bar Lady Ida S C C 2P37

BT Right Time 24J
Miss Wix 5150 of Mc Cumber
Miss Wix 101 of Mc Cumber

Emulation N Bar 5522
N Bar Primrose 2424
N Bar Prime Time D806
N Bar Lady Ida F1080
Leachman Right Time
Sitz Everelda Entense 1905
Mc Cumber Ferdinand 896
Miss Wix 7009 of Mc Cumber

Ind. Record	
BW	88
WW	780
205	690
WR	103
ADG	3.38
YW	1,230
365	1,231
YR	100
IMF	4.62/132
REA	11.6/94
FAT	.33/110

EPDs										Dam's Prod.		
BW	WW	YW	Milk	SC	IMF	REA	Fat	\$W	\$B	BW	WW	YW
+1.3	+44	+75	+20		+.42	-.18	+.027	28.69	41.59	4-104	4-97	3-99

Selling 2/3 interest and full possession- 03 is a big, stout made 4X13 that weaned off his dam at 780 lbs. This long bodied, free striding bull is big scrotaled, and good natured. In addition to this, he had one of the top IMF scores with a score of 4.62 to ratio 132. 03 is another bull that falls just outside the heifer bull category, but may fit after seeing how he calves on the cows. His fertile, neat uddered dam has a calving interval of 4@364. Miss Wix 5150 is also a very easy fleshing, neat uddered daughter of 24J, who consistently adds extra stoutness to her progeny. She has one son working for James Cloud in TX, and is nursing another full brother to 03 already this year.

03 has a proven pedigree for predictable, problem free cattle.

**Mc Cumber 4X13 Extra 03**

Lot:

38 Mc Cumber Missing Link 08

Calved
1/19/2010

Reg. #
16696673

O C C Headliner 661H
O C C Missing Link 830M
O C C Dixie Erica 946K

Sinclair Extra 4X13
Lassie 723 of Mc Cumber
Lassie 5134 of Mc Cumber

O C C Emblazon 854E
O C C Juanada 858F
O C C Glory 950G
O C C Dixie Erica 816B
N Bar Emulation EXT
N Bar Lady Ida S C C 2P37
Mc Cumber 7078 VRD 3116
Lassie 2140 of Mc Cumber

Ind. Record	
BW	81
WW	800
205	750
WR	112
ADG	2.63
YW	1,150
365	1,171
YR	96
IMF	1.91/55
REA	1.9/88
FAT	.24/80

EPDs										Dam's Prod.		
BW	WW	YW	Milk	SC	IMF	REA	Fat	\$W	\$B	BW	WW	YW
-1.0	+52	+76	+19		-.07	-.04	+.020	36.43	19.54	1-95	1-112	1-96

Selling 2/3 interest and full possession- Recommended for use on heifers- This bull was the standout of the calf crop all summer, however, he got very sick this fall and it really set him back. He seems to be back on track and may be the sleeper of the entire sale. He weaned off his dam at 800 lbs and earned a 205 day weight of 750 lbs to ratio 112. 08 is a thick made, deep bodied wide tracking son of Missing Link, with a large scrotum, and a good disposition. His dam is the easiest fleshing daughter of 4X13 on the Ranch, and has never missed settling AI.

We really like the Missing Link X 4X13 mating for producing light birth, fast growing cattle that mature moderately framed, thrive on forage, and not necessarily maximize production, but optimize.

Lot:

37 Mc Cumber 536P EXT 0139

Calved
2/7/2010

Reg. #
16684255

N Bar Emulation EXT
Sitz JLS Emulation EXT 536P
Ideal 4465 of 6807 4286

Boyd New Day 8005
Rosetta 494 of Mc Cumber
Rosetta 9147 of Mc Cumber

Emulation N Bar 5522
N Bar Primrose 2424
D H D Traveler 6807
E E 4286 of Ideal 2240 1254
A A R New Trend
S V F Forever Lady 57D
Matthew of Mc Cumber HC 6365
Rosetta 601 of Mc Cumber

Ind. Record	
BW	96
WW	738
205	686
WR	103
ADG	3.89
YW	1,256
365	1,308
YR	107
IMF	3.15/90
REA	13.5/109
FAT	.33/110

EPDs										Dam's Prod.		
BW	WW	YW	Milk	SC	IMF	REA	Fat	\$W	\$B	BW	WW	YW
+4.0	+36	+73	+29	-.06	+.13	+.16	+.014	19.16	37.87	5-99	5-102	5-103

This long-spined, bigger framed son of 536P was a top performer among his contemporaries. He had an ADG of 3.89 lbs/day to ratio 112, and earned a 365 day weight of 1308 lbs to ratio 107 at a year. In addition he had a REA of 13.5 to ratio 109, and possesses the extra length to add pounds to his offspring. His easy fleshing, productive dam has already produced one herd bull that sold to Terry Little in MO for \$7000. She has been very productive along the way with a BWR 5@99, WWR 5@102 and YWR 5@103. Along with this, she has been very good on the ultrasound as well with, an IMF 5@112, and REA 5@104. His dam and Grand dam have been top producers too with, Rosetta 9147 earning ratios of WWR 6@104, YWR 6@104, IMF 6@104, and REA 6@103 and Rosetta 601 with a WWR 9@109, YWR 8@104, IMF 6@113, and REA 6@99.

0139 is produced from multiple generations of top cows, thus ensuring his ability to consistently sire productive, fertile, problem free females and males with added performance.



Maternal brother • Mc Cumber Valubull 6100

Lot:

39 Mc Cumber Tremendous 034

Ind. Record	
BW	97
WW	750
205	692
WR	104
ADG	3.43
YW	1,206
365	1,241
YR	102
IMF	3.33/95
REA	13.2/106
FAT	.13/43

Calved
1/24/2010

Reg. #
16684345

O C C Emblazon 854E
O C C Tremendous 619T
O C C Dixie Erica 960H

Leachman Right Time
Gale 6154 of Mc Cumber
Gale 045 of Mc Cumber

D H D Traveler 6807
Dixie Erica of C H 1019
O C C Anchor 771A
O C C Dixie Erica 907C
N Bar Emulation EXT
Leachman Erica 0025
A A R New Trend
Gale 783 of Mc Cumber

EPDs										Dam's Prod.		
BW	WW	YW	Milk	SC	IMF	REA	Fat	\$W	\$B	BW	WW	YW
+3.0	+42	+68	+18		+.18	+.34	-.022	25.65	38.10	2-110	2-107	2-107

034 is a heavy muscled, high libido son of OCC Tremendous 619T who has been acting like a mature bull all winter. He weaned off his dam at 750lbs, scanned a REA of 13.3 to ratio 106, and earned a 365 day weight of 1241 lbs to ratio 102. His 6th consecutive generation pathfinder dam is not only fertile, but productive as well. She is a member of the Gale cow family and a daughter of one of the most productive females to reside on this Ranch.

**Mc Cumber 718 Extra 055**

Lot:

40 Mc Cumber 718 Extra 055

Calved
1/27/2010

Reg. #
16684361

Sinclair Extra 4X13
Mc Cumber 4X13 Extra 718
Miss Wix 409 of Mc Cumber

Mc Cumber 7078 VRD 3108
B Pride 6163 of Mc Cumber
B Pride 2185 of Mc Cumber

N Bar Emulation EXT
N Bar Lady Ida S C C 2P37
S A V 8180 Traveler 004
Miss Wix 2022 HC Mc Cumber
Vermillion Dateline 7078
Lassie 974 of Mc Cumber
Mc Cumber 054 Rito 326
B Pride 5122 of Mc Cumber

Ind. Record	
BW	88
WW	715
205	664
WR	99
ADG	3.67
YW	1,203
365	1,251
YR	102
IMF	3.18/91
REA	12.0/97
FAT	.18/60

EPDs										Dam's Prod.		
BW	WW	YW	Milk	SC	IMF	REA	Fat	\$W	\$B	BW	WW	YW
+2.9	+39	+72	+24	-.08	+.22	-.11	+.021	23.48	32.63	3-96	3-96	3-98

055 is a deep bodied, thick made beef bull, with plenty of performance. His dam is a beautiful daughter of Mc Cumber 7078 VRD 3108. She is deep, thick, easy fleshing, and nice uddered. B Pride 6163 has never missed settling AI, and maintains her flesh as well as any on the Ranch.



Grand dam • Gale 045 of Mc Cumber

Lot:

41 Mc Cumber 751 Extra 084

Calved
1/31/2010

Reg. #
16684387

Sinclair Extra 4X13
Mc Cumber 4X13 Extra 751
Miss Wix 5139 of Mc Cumber

Mc Cumber 7111 Total Value
B Pride 6107 of Mc Cumber
B Pride 9124 of Mc Cumber

N Bar Emulation EXT
N Bar Lady Ida S C C 2P37
BT Right Time 24J
Miss Wix 7111 of Mc Cumber
Vermillion Dateline 7078
Miss Wix 7111 of Mc Cumber
Sitz Traveler 9929
B Pride 839 of Mc Cumber

Ind. Record	
BW	86
WW	682
205	640
WR	96
ADG	3.65
YW	1,168
365	1,224
YR	100
IMF	3.47/99
REA	11.5/93
FAT	.29/97

EPDs										Dam's Prod.		
BW	WW	YW	Milk	SC	IMF	REA	Fat	\$W	\$B	BW	WW	YW
+2.0	+36	+62	+21	-.33	+.34	-.04	+.018	25.58	36.93	3-98	3-94	2-100

Recommended for use on heifers- 084 is a soggy, wide made, free moving son of Mc Cumber 4x13 Extra 751. He gained 3.65 lbs/day and earned

a 365 day weight of 1224 lbs. His dam is a moderate framed, easy fleshing full sister to Mc Cumber Total Value 551, and a maternal sister to the herd bull prospect selling as Lot 4 in this sale. B Pride 6107 is sound footed, docile, and produced one other son that sold to Bar V in ND.



Full brother to dam • Mc Cumber Total Value 551

**Mc Cumber 751 Extra 084**

Lot:

42 Mc Cumber 6536 Rainmakr 0100Calved
2/2/2010
Reg. #
16684217Sitz Rainmaker 6169
Sitz Rainmaker 6536
Sitz Elsiemere 331

S A V 8180 Traveler 004
Lassie 6104 of Mc Cumber
Lassie 399 of Mc CumberSitz Rainmaker 8987
Sitz Barbaramere Jet 3007
Sitz Alliance 6595
Sitz Elsiemere 1909
Sitz Traveler 8180
Boyd Forever Lady 8003
BT Traveler 228K
Lassie 830 of Mc Cumber

Ind. Record	
BW	83
WW	756
205	710
WR	106
ADG	3.45
YW	1,215
365	1,262
YR	103
IMF	3.25/93
REA	11.8/95
FAT	.29/97

EPDs										Dam's Prod.		
BW	WW	YW	Milk	SC	IMF	REA	Fat	\$W	\$B	BW	WW	YW
+1.0	+41	+80	+29	+15	+.23	-.05	+.050	26.42	31.02	3-98	3-106	3-102

Recommended for use on heifers- This long bodied, smooth made son of 6536 performed well across the board. He earned a 205 day weight of 710 lbs without creep to ratio 106, and recorded a 365 day weight of 1262 lbs to ratio 103. 0100 is a bit bigger framed, and produced from a 4th consecutive generation pathfinder daughter of 004. Lassie 6104 is feminine fronted, but also has plenty of capacity, and natural width. In addition, she is neat uddered, good footed, and eye appealing. Her production and fertility has been outstanding with a BWR 3@98, WWR 3@106, YWR 3@102, and an IMF 3@110. She has a calving interval of 4@361, and is nursing a super bull calf by OCC Tremendous 619T already this year.



Maternal brother • Mc Cumber 4X13 Extra 8130

Lot:

43 Mc Cumber Tremendous 0160Calved
2/17/2010
Reg. #
16684274O C C Emblazon 854E
O C C Tremendous 619T
O C C Dixie Erica 960H

Sinclair Extra 4X13
Gale 805 of Mc Cumber
Gale 6154 of Mc CumberD H D Traveler 6807
Dixie Erica of CH 1019
O C C Anchor 771A
O C C Dixie Erica 907C
N Bar Emulation EXT
N Bar Lady Ida S C C 2P37
Leachman Right Time
Gale 045 of Mc Cumber

Ind. Record	
BW	86
WW	690
205	738
WR	110
ADG	3.11
YW	1,104
365	1,236
YR	101
IMF	4.36/125
REA	12.2/98
FAT	.24/80

EPDs										Dam's Prod.		
BW	WW	YW	Milk	SC	IMF	REA	Fat	\$W	\$B	BW	WW	YW
+1.8	+48	+73	+18		+.41	+.11	+.002	31.13	48.22	1-105	1-110	1-101

Selling 2/3 interest and full possession- 0160 is a masculine, muscular son of Tremendous with a legitimate beef bull look. This good headed, deep bodied, heavy muscled bull weaned off his dam with a 205 day weight of 738 lbs to ratio 110. He earned a 365 day weight of 1236 lbs to ratio 101 and scanned a IMF of 4.36 to ratio 125 and secure the #1 IMF score for the sire group. His neat uddered, big bodied dam is produced from 6 consecutive generations of pathfinders, and is well on her way to pathfinder status as well. She is the top IMF daughter of 4X13 in the herd and is a result of mating 4x13 to a pathfinder Right Time daughter. This mating has been a favorite of ours and not only results in fertile, functional, low maintenance females, but bulls that perform well and have the bred in ability to sire top females. Put together a bunch of these 3/4 brothers OCC Tremendous 619T X 4x13 bulls for a more consistent calf crop bred to make a positive impact to your bottom line.

Lot:

44 Mc Cumber 6536 Rainmakr 0119Calved
2/4/2010
Reg. #
16684233Sitz Rainmaker 6169
Sitz Rainmaker 6536
Sitz Elsiemere 331

Sitz JLS Emulation EXT 536P
B Pride 7186 of Mc Cumber
B Pride 2185 of Mc CumberSitz Rainmaker 8987
Sitz Barbaramere Jet 3007
Sitz Alliance 6595
Sitz Elsiemere 1909
N Bar Emulation EXT
Ideal 4465 of 6807 4286
Mc Cumber 054 Rito 326
B Pride 5122 of Mc Cumber

Ind. Record	
BW	76
WW	671
205	660
WR	99
ADG	3.50
YW	1,137
365	1,220
YR	100
IMF	4.49/128
REA	11.9/96
FAT	.41/137

EPDs										Dam's Prod.		
BW	WW	YW	Milk	SC	IMF	REA	Fat	\$W	\$B	BW	WW	YW
+ .5	+31	+64	+26		+.26	+.01	+.047	24.69	22.50	2-89	2-98	2-100

Recommended for use on heifers- This light birth, docile son of Rainmaker 6536 is moderate framed, deep bodied, and naturally thick. 0119 is sound structured, wide based, and heavy muscled. He has one of the best IMF scores with an IMF of 4.48 to ratio 128. His dam is a fertile, easy fleshing, good uddered daughter of 536p. B Pride 7186 of Mc Cumber has calved earlier every year and has earned a calving interval of



Sitz JLS Emulation EXT 536P daughter that sold to Saddle River Miss Wix of Mc Cumber 0190

3@346. Additionally, she is a light birth weight cow with 3 calves with an average birth weight of 80 lbs and a BWR of 2@89. Her progeny scan consistently well for IMF with a ratio of 2@108. Her only daughter sired by Tremendous recently calved and is near perfect uddered, quiet dispositioned, and easy fleshing.

**Mc Cumber Tremendous 0160**

Lot:

47 Mc Cumber 7150 Traveler 0147

Calved
2/10/2010

Reg. #
16684262

S A V 8180 Traveler 004
McCumber Hard Drive 7150
Lassie 206 of Mc Cumber

Mc Cumber 7111 Total Value
Holly 544 of Mc Cumber
FV Holly 1428

Sitz Traveler 8180
Boyd Forever Lady 8003
Leachman Right Time
Lassie 272 of Mc Cumber
Vermillion Dateline 7078
Miss Wix 7111 of McCumber
BT Dolan 74D
Fairview Holly 6120

Ind. Record	
BW	99
WW	775
205	725
WR	109
ADG	3.68
YW	1,264
365	1,314
YR	108
IMF	2.48/71
REA	11.8/95
FAT	.26/87

EPDs										Dam's Prod.		
BW	WW	YW	Milk	SC	IMF	REA	Fat	\$W	\$B	BW	WW	YW
+4.1	+48	+87	+23	+.34	+.08	+.09	+.025	22.31	36.31	4-99	4-99	4-101

This is a top performer with the credentials to be moved up in the sale order. 0147 is a deep bodied, thick made son of Mc Cumber Hard Drive 7150 with length, base width, and masculinity. He weaned off his dam at 775 lbs and earned a 205 day weight of 725 lbs to ratio 109. On test he gained 3.68 lbs/day to ratio 106 and had a 365 day weight of 1314 lbs to ratio 108. His moderate framed, high volume, easy fleshing dam has never missed settling first service AI, and has a calving interval of 5@367.

Lot:

48 Mc Cumber 7150 Traveler 0145

Calved
2/9/2010

Reg. #
16684260

S A V 8180 Traveler 004
McCumber Hard Drive 7150
Lassie 206 of Mc Cumber

Mc Cumber New Trend 1206
B Pride 5183 of Mc Cumber
B Pride 275 of Mc Cumber

Sitz Traveler 8180
Boyd Forever Lady 8003
Leachman Right Time
Lassie 272 of Mc Cumber
A A R New Trend
Miss Wix 705 of Mc Cumber
Pine Creek Right Time 1147
B Pride 0103 of Mc Cumber

Ind. Record	
BW	101
WW	712
205	665
WR	100
ADG	3.88
YW	1,228
365	1,286
YR	105
IMF	3.49/100
REA	14.1/114
FAT	.28/93

EPDs										Dam's Prod.		
BW	WW	YW	Milk	SC	IMF	REA	Fat	\$W	\$B	BW	WW	YW
+5.0	+36	+75	+24	+.72	+.19	+.13	+.022	15.74	38.75	4-107	4-99	4-100

0145 is a heavy muscled, deep bodied, wide tracking son of Mc Cumber Hard Drive 7150. He has a masculine, muscular look to him, and travels with ease. He gained 3.88 lbs/day to ratio 112, and earned a 365 day weight of 1286 lbs to ratio 105. His ultrasound is extremely impressive with an IMF of 3.49 to ratio 100, and a REA near the top at 14.1 to ratio 114. His dam is one



Maternal brother to dam Mc Cumber Timberwolf 7168

of the deepest bodied, widest made cows on the Ranch. B Pride 5183 is neat uddered, good footed, and easy fleshing. In addition to this her dam was a feature our 2009 Female sale to Smart Farms in Canada. Check out this bull if adding muscle and stoutness is a priority.

Lot:

45 Mc Cumber 751 Extra 0122

Calved
2/5/2010

Reg. #
16684237

Sinclair Extra 4X13
Mc Cumber 4X13 Extra 751
Miss Wix 5139 of Mc Cumber

BT New Trend 172K
Miss Wix 4162 of Mc Cumber
Miss Wix 1101 of Mc Cumber

N Bar Emulation EXT
N Bar Lady Ida S C C 2P37
BT Right Time 24J
Miss Wix 7111 of McCumber
A A R New Trend
BT Everelda Entense 57D
Mc Cumber Powertrain HC 1025
Miss Wix 6101 of Mc Cumber

Ind. Record	
BW	99
WW	742
205	686
WR	103
ADG	3.58
YW	1,218
365	1,259
YR	103
IMF	3.30/94
REA	11.5/93
FAT	.26/87

EPDs										Dam's Prod.		
BW	WW	YW	Milk	SC	IMF	REA	Fat	\$W	\$B	BW	WW	YW
+3.2	+42	+69	+25	+.13	+.32	-.19	+.022	25.90	34.87	5-106	5-97	5-99

0122 is a long bodied, bigger framed son of Mc Cumber 4x13 Extra 751. He weaned off his good milking dam at 742 lbs, gained 3.58 lbs/day and earned a 365 day weight of 1259 lbs. His dam is a big ribbed, sound structured daughter of BT New Trend 172K, and has produced sons that have sold to Cudworth Brothers, and Nathan Fegley in ND.

Lot:

46 Mc Cumber Tremendous 0012

Calved
2/20/2010

Reg. #
16851136

O C C Emblazon 854E
O C C Tremendous 619T
O C C Dixie Erica 960H

LT Timberwolf 5014
Lassie 808 of Mc Cumber
Lassie 689 of Mc Cumber

D H D Traveler 6807
Dixie Erica of C H 1019
O C C Anchor 771A
O C C Dixie Erica 907C
Wulffs Ext 6106
L T Ethelda 3245
Mc Cumber Total Value 449
Lassie 2158 of Mc Cumber

Ind. Record	
BW	65
WW	685
205	738
WR	97
ADG	3.50
YW	1,150
365	1,298
YR	100
IMF	3.52/85
REA	14.2/102
FAT	.32/110

EPDs										Dam's Prod.		
BW	WW	YW	Milk	SC	IMF	REA	Fat	\$W	\$B	BW	WW	YW
-.7	+39	+69	+16		+.03	+.19	-.004	27.74	22.38	1-97	1-97	1-100

Recommended for use on heifers- This calving ease prospect started life at only 65 lbs, but went on to wean off his dam with a 205 day weight of 738 lbs as his dam's first calf. He earned a 365 day weight of nearly 1300 lbs and scanned a REA of 14.2, which resulted in a REA/CWT of 1.31. 0012 is a long bodied, muscular son of Tremendous with a quiet disposition and extra muscle shape to his top and hind quarter. His dam is a neat uddered, pretty fronted daughter of LT Timberwolf and is produced from multiple generations of light birth females.

Lot:

49 Mc Cumber 751 Extra 0151Calved
2/13/2010Reg. #
16684267Sinclair Extra 4X13
Mc Cumber 4X13 Extra 751
Miss Wix 5139 of Mc CumberVermillion Dateline 7078
Rosetta 5123 of Mc Cumber
Rosetta 1126 of Mc CumberN Bar Emulation EXT
N Bar Lady Ida S C C 2P37
BT Right Time 24J
Miss Wix 7111 of Mc Cumber
Connealy Dateline
Vermilion Blackbird 5044
Mc Cumber Foundation 701
Rosetta 5002 of Mc Cumber

Ind. Record	
BW	86
WW	721
205	680
WR	102
ADG	3.47
YW	1,183
365	1,235
YR	101
IMF	4.88/139
REA	12.7/102
FAT	.34/113

EPDs										Dam's Prod.		
BW	WW	YW	Milk	SC	IMF	REA	Fat	\$W	\$B	BW	WW	YW
+1.3	+41	+71	+23	-.18	+.48	+.06	+.031	27.98	43.35	4-101	4-102	4-103

Recommended for use on heifers- 0151 is a long bodied, smooth fronted son of 751. He performed well, and scanned above average across the board. He weaned off his dam at 712 lbs and earned a 365 day weight of 1235 lbs to ratio 101. His ultrasound is impressive with an IMF of 4.88 to ratio 139 and a REA of 12.7 to ratio 102. His dam is a moderate framed, good uddered daughter of VRD, and a member of the Rosetta tribe. She is a consistent producer with a BWR 4@101, WWR 4@102, YWR 4@103, IMF 4@118, and REA 4@100. She has a calving interval of 4 @358, and is nursing an AI sired calf by 9112 already this year.

Lot:

50 Mc Cumber Missing Link 0153Calved
2/13/2010Reg. #
16696681O C C Headliner 661H
O C C Missing Link 830M
O C C Dixie Erica 946KS A V 8180 Traveler 004
B Pride 461 of Mc Cumber
B Pride 2185 of Mc CumberO C C Emblazon 854E
O C C Juanada 858F
O C C Glory 950G
O C C Dixie Erica 816B
Sitz Traveler 8180
Boyd Forever Lady 8003
Mc Cumber 054 Rito 326
B Pride 5122 of Mc Cumber

Ind. Record	
BW	93
WW	715
205	675
WR	101
ADG	3.38
YW	1,165
365	1,216
YR	99
IMF	2.85/81
REA	12.6/102
FAT	.33/110

EPDs										Dam's Prod.		
BW	WW	YW	Milk	SC	IMF	REA	Fat	\$W	\$B	BW	WW	YW
+3.0	+43	+75	+20	+.60	-.04	+.25	+.028	25.78	25.10	5-102	5-101	5-101

This big scrotaled, heavy muscled son of Missing Link, is wide based, deep bodied and free moving. He weaned off his dam at 712 lbs and had a REA of 12.6 to ratio 102. His dam is a one of the top 004 daughters on the Ranch, and has already produced one top selling bull to Crider Ranch for \$7250. She is a fertile, productive member of the B Pride cow family with a WWR 5@101, YWR 5@101, and a calving interval 6@365. She has never missed settling first service AI and her two daughters in production here have never missed either.

Maternal brother • Mc Cumber
2700 RT Time 845

Lot:

51 Mc Cumber 8134 TRADITIN 0113Calved
2/4/2010Reg. #
16711696Mc Cumber Tradition 383
Mc Cumber 383 Tradition 8134
Oak Hill Miss Wix 9402S A V 8180 Traveler 004
Lassie 706 of Mc Cumber
Lassie 0006 of Mc CumberLeachman Right Time
Lassie 7015 of Mc Cumber
N Bar Emulation EXT
Homestretch Miss Wix 663
Sitz Traveler 8180
Boyd Forever Lady 8003
A A R New Trend 03
Lassie 462 of Mc Cumber

Ind. Record	
BW	94
WW	680
205	669
WR	100
ADG	3.81
YW	1,187
365	1,279
YR	104
IMF	4.18/119
REA	12.1/98
FAT	.28/93

EPDs										Dam's Prod.		
BW	WW	YW	Milk	SC	IMF	REA	Fat	\$W	\$B	BW	WW	YW
+4.4	+40	+78	+25		+.26	+.00	+.026	18.94	38.68	2-106	2-103	2-106

A high-gaining, wide made son of our 2009 sale topper Mc Cumber 383 Tradition 8134 with extra stoutness, and length of body. He gained 3.81 lbs/day to ratio 111, and earned a 365 day weight of 1279 lbs to ratio 105. His IMF is very good as well with an IMF of 4.18 to ratio 119. His feminine fronted, neat uddered dam is off to a good start with a WWR 2@103, YWR 2@106, and IMF 2@118. She has produced one other son that sold to Dustin and Robyn Dunlap in last year's sale.



Maternal brother to dam • Mc Cumber 2700 RT Time 810

Lot:

52 Mc Cumber 536P EXT 024Calved
1/23/2010Reg. #
16684337N Bar Emulation EXT
Sitz JLS Emulation EXT 536P
Ideal 4465 of 6807 4286BT Traveler 228K
Lady Barbola 3131 Mc Cumber
Lady Barbola 171 Mc CumberEmulation N Bar 5522
N Bar Primrose 2424
D H D Traveler 6807
E E 4286 of Ideal 2240 1254
Sitz Traveler 9929
BT Everelda Entense 57D
Mc Cumber Foundation 701
Lady Barbola 684 Mc Cumber

Ind. Record	
BW	85
WW	770
205	689
WR	103
ADG	3.24
YW	1,201
365	1,207
YR	99
IMF	3.17/91
REA	12.2/98
FAT	.23/77

EPDs										Dam's Prod.		
BW	WW	YW	Milk	SC	IMF	REA	Fat	\$W	\$B	BW	WW	YW
+1.3	+29	+50	+31		-.01	+.04	-.012	26.33	23.01	6-102	6-105	5-104

Recommended for use on heifers- 024 is a light birth weight son of 536P that weaned off his dam at 770 lbs and has a bit more frame than the average 536P. His highly productive dam has been very good with a WWR of 6@105, YWR 5@104, and REA 5@112.

Lot:

53 Mc Cumber 4X13 Extra 0137

Calved
2/7/2010

Reg. #
16684253

N Bar Emulation EXT
Sinclair Extra 4X13
N Bar Lady Ida S C C 2P37

Sitz Alliance 9800
Miss Wix 505 of Mc Cumber
Miss Wix 3149 of Mc Cumber

Emulation N Bar 5522
N Bar Primrose 2424
N Bar Prime Time D806
N Bar Lady Ida F1080
Sitz Alliance 6595
Sitz Barbara Perfection 3171
BT New Trend 172K
Miss Wix 765 of Mc Cumber

Ind. Record	
BW	94
WW	760
205	706
WR	106
ADG	3.35
YW	1,205
365	1,242
YR	102
IMF	3.52/101
REA	11.6/94
FAT	.32/107

EPDs										Dam's Prod.		
BW	WW	YW	Milk	SC	IMF	REA	Fat	\$W	\$B	BW	WW	YW
+ .8	+ 39	+ 68	+ 28	+ .17	+ .38	-.41	+ .042	29.90	34.43	3 - 101	3 - 102	3 - 99

0137 is a big weaning weight son of Sinclair Extra 4X13 with added length of body. He weaned off his dam at 760 lbs without creep, and earned a 205 day weight of 706 lbs to ratio 106. In addition, he moves with ease as he travels and puts a foot down in all four corners. His Sitz Alliance 9800 dam is a productive, neat uddered, fertile member of the Miss Wix cow family. She has a WWR of 3@102, and has produced one other son that sold to the Yuly Ranch in ND.



Chuck and Matt Tastad

Lot:

54 Mc Cumber 4X13 Extra 002

Calved
2/3/2010

Reg. #
16684214

N Bar Emulation EXT
Sinclair Extra 4X13
N Bar Lady Ida S C C 2P37

G D A R Traveler 71
Miss Wix 7111 of Mccumber
Miss Wix 365 of Mc Cumber

Emulation N Bar 5522
N Bar Primrose 2424
N Bar Prime Time D806
N Bar Lady Ida F1080
Traveler 1148 G D A R
G D A R MISS Blackcap 567
Shoshone 247 P J M
Miss Wix 294 of Mc Cumber

Ind. Record	
BW	80
WW	730
205	670
WR	100
ADG	3.40
YW	1,182
365	1,214
YR	100
IMF	6.25/148
REA	11.7/89
FAT	.34/94

EPDs										Dam's Prod.		
BW	WW	YW	Milk	SC	IMF	REA	Fat	\$W	\$B	BW	WW	YW
+ .4	+ 33	+ 57	+ 28	-.14	+ .70	-.34	+ .043	29.92	38.29	4 - 98	4 - 105	4 - 105



Mc Cumber 4X13 Extra 002

Selling 2/3 interest and full possession- Recommended for use on heifers- This will be the last son of Miss Wix 7111 of Mc Cumber to sell here at Mc Cumber. She is the dam of Mc Cumber 7111 Total Value 209 that sold to Redland Angus and Marcy Cattle Company through our 2003 bull sale. She also produced Miss Wix 2022 of Mc Cumber who was the top selling female of our 2009 Female sale to Sinclair Cattle Co. for \$26,000, as well as two other full sisters, one which sold to Fortune's Rafter U Cross Ranch in SD through our 2003 for \$15,000 and another that sold to Terry Little in MO through our 2006 Female sale for \$12,500 as a weaned heifer calf. 002 has two full sisters retained here at Mc Cumber. Miss Wix 6145 of Mc Cumber is the dam to one of the high selling Missing Link sons in last year's sale to Kemnitz Angus for \$8750, and was used back here. 6145 was flushed for the first time last spring. Another full sister is a first calf heifer nursing a super Missing Link heifer calf this year.

002 is a long bodied, clean made bull, with plenty of thickness, and attractive look. He weaned off his recipient dam at 730 lbs and earned a 365 day weight of 1214 lbs. In addition to this he scanned the #1 IMF of the entire calf crop with an IMF of 6.25 to ratio 148, and earned him an IMF EPD of +.70.

This calving ease, cow maker herd sire prospect is the result of mating proven genetics that are predictable, problem free cattle that have withstood the test of time.



Mc Cumber Missing Link 9104 produced by full sister



Dam • Miss Wix 7111 of Mc Cumber



Mc Cumber Tremendous 087

Lot:

55 Mc Cumber Tremendous 087

		Ind. Record
Calved	Reg. #	BW 77
1/31/2010	16684389	WW 685
		205 666
		WR 100
O C C Emblazon 854E	D H D Traveler 6807	ADG 3.38
O C C Tremendous 619T	Dixie Erica of CH 1019	YW 1,135
O C C Dixie Erica 960H	O C C Anchor 771A	365 1,207
	O C C Dixie Erica 907C	YR 99
Sinclair Extra 4X13	N Bar Emulation EXT	IMF 3.86/110
Miss Wix 7031 of Mc Cumber	N Bar Lady Ida S C C 2P37	REA 12.0/97
Miss Wix 2022 HC Mc Cumber	Leachman Right Time	FAT .29/97
	Miss Wix 7111 of McCumber	

EPDs	BW	WW	YW	Milk	SC	IMF	REA	Fat	\$W	\$B	Dam's Prod.	BW	WW	YW
-1.0	+40	+65	+20	-.65	+.28	-.02	+.012	31.35	32.65	2-93	2-109	2-104		

Selling 2/3 interest and full possession- Recommended for use on heifers- This calving ease, cow maker herd prospect is backed by some of the best cows to ever reside on this Ranch. 087 is a thick made, moderate framed son of OCC Tremendous 619T that is wide based, good footed, and extra quiet. He is a masculine, deep bodied bull with good scrotal development and plenty of muscle. His dam is one of the favorite 4X13 daughters on the Ranch. Miss Wix 7031 of Mc Cumber is very docile, has a near perfect udder with small well placed teats and desirable attachment both fore and rear. She is following in the footsteps of the reknowned cow family from which she descends with outstanding production, fertility, and udder quality. She has a BWR 2@93, WWR 2@109, YWR 2@104, IMF 2@104, REA 2@100, a calving interval of 2@340, and is nursing an AI sired heifer calf by Sinclair Entrepreneur 8R101 this year. The full brother to 087 from last year's calf crop was retained here at Mc Cumber to clean-up heifers, and we have a nice set of calves on the ground by him.

Sure 087 was just average on his performance, but the best cow makers, most maternal bulls are not extreme in any way. 087 is bred to ensure light birth, moderate framed, forage efficient cattle that with be long lived, problem free, and help add to the bottom line of cow/calf producers.



Grand dam to Lot 55 • Miss Wix 2022 of Mc Cumber



Mc Cumber 6536 Rainmakr 0114

Lot:

56 Mc Cumber 6536 Rainmakr 0114

		Ind. Record
Calved	Reg. #	BW 84
2/4/2010	16684229	WW 666
		205 614
		WR 92
Sitz Rainmaker 6169	Sitz Rainmaker 8987	ADG 3.49
Sitz Rainmaker 6536	Sitz Barbaramere Jet 3007	YW 1,130
Sitz Elsiemere 331	Sitz Alliance 6595	365 1,172
	Sitz Elsiemere 1909	YR 96
Leachman Right Time	N Bar Emulation EXT	IMF 3.02/86
Miss Wix 5005 of Mc Cumber	Leachman Erica 0025	REA 13.9/112
Miss Wix 7007 of Mc Cumber	Mc Cumber 124 Traveler 212	FAT .34/113
	Miss Wix 030 of Mc Cumber	

EPDs	BW	WW	YW	Milk	SC	IMF	REA	Fat	\$W	\$B	Dam's Prod.	BW	WW	YW
+7	+32	+69	+22			+.05	+.20	+.047	22.45	18.16	3-93	4-91	3-98	

Recommended for use on heifers- 0114 is a super stylish, well made son of Sitz Rainmaker 6536. He is heavy muscled, wide based and free moving. He scanned a large REA of 13.9 to ratio 112 and earned a REA/CWT of 1.25. His moderate framed, easy fleshing, good uddered dam is one of the real good looking daughters of Right Time on the Ranch. She is produced from a dam that combines both Miss Wix 365 of Mc Cumber and Miss Wix 235 of Mc Cumber, who is the dam to Mc Cumber Foundation 701.



Chuck Tastak



Matt Tastad

McCumber
Angus
Ranch





Lot: **57 Mc Cumber 780 Emblazon 0019**

Ind. Record	
BW	92
WW	704
205	717
WR	116
ADG	3.14
YW	1,175
365	1,219
YR	108
IMF	2.15/69
REA	13.8/113
FAT	.22/96

Calved 2/20/2010
Reg. # 16845327

O C C Emblazon 854E
Coleman Emblazon 780
Bohi Lady 1165
Boyd New Day 8005
Miss Wix 498 of Mc Cumber
Miss Wix 0104 of Mc Cumber
D H D Traveler 6807
Dixie Erica of CH 1019
N Bar Emulation EXT
Ideal 4465 of 6807 4286
A A R New Trend
S V F Forever Lady 57D
Sitz S L S Rainmaker 7596
Miss Wix 843 of Mc Cumber

EPDs										Dam's Prod.			
BW	WW	YW	Milk	SC	IMF	REA	Fat	\$W	\$B	BW	WW	YW	
+2.0	+53	+93	+20		-.13	+.39	-.010	28.03	26.73	3-103	3-105	2-108	

Selling 2/3 interest and full possession- 0019 is a real standout. He is a big bodied, moderate framed, heavy muscled son of Coleman Emblazon 780. He earned a 205 day weight of 716 lbs to ratio 116 in his contemporary group. In addition he gained 3.66 lbs/day on test and had a REA of 13.8 to ratio 114. This high performing Emblazon grand son is mild tempered, big scrotaled, and masculine. His impressive, productive dam is a good uddered, sound structured daughter of New Day who produced one other son that sold to Darrel Walters in ND.

Make sure you find this stout made, wide based beef bull. He possess the ingredients to not only sire stout, heavy male progeny, but females that are forage efficient, easy fleshing, and moderate framed.

Lot: **58 Mc Cumber 6536 Rainmaker 061**

Ind. Record	
BW	75
WW	652
205	668
WR	100
ADG	3.74
YW	1,149
365	1,266
YR	103
IMF	4.23/121
REA	12.9/104
FAT	.38/127

Calved 1/27/2010
Reg. # 16684367

Sitz Rainmaker 6169
Sitz Rainmaker 6536
Sitz Elsiemere 331
Sinclair True Value 6PV20
Rosetta 8156 of Mc Cumber
Rosetta 617 of Mc Cumber
Sitz Rainmaker 8987
Sitz Barbaramere Jet 3007
Sitz Alliance 6595
Sitz Elsiemere 1909
Sinclair Net Present Value
N Bar Miss Emulous A404
S A V 8180 Traveler 004
Rosetta 471 of Mc Cumber

EPDs										Dam's Prod.			
BW	WW	YW	Milk	SC	IMF	REA	Fat	\$W	\$B	BW	WW	YW	
-.3	+38	+76	+24		+.40	+.07	+.061	26.41	33.16	1-93	1-100	1-103	

Recommended for use on heifers- This sure shot calving ease prospect really excelled on test. He had an ADG of 3.74 lbs/day to ratio 108 and earned a 365 day weight of 1267 lbs. to ratio 103. He scanned extremely well with an IMF of 4.23 to ratio 112, and a REA of 12.9 to ratio 104. This outcross pedigreed bull is clean made, tight sheathed, and long bodied. He is fluid in his movement and stands down square and true. His dam is a moderate framed, easy fleshing Net Present Value daughter, and would be my preferred female in the sire group.





Mc Cumber 6536 Rainmakr 0169

Lot:

59 Mc Cumber 6536 Rainmakr 0169

Calved
2/22/2010

Reg. #
16684282

Sitz Rainmaker 6169
Sitz Rainmaker 6536
Sitz Elsiemere 331

Sitz Rainmaker 8987
Sitz Barbaramere Jet 3007
Sitz Alliance 6595
Sitz Elsiemere 1909
N Bar Emulation EXT
Leachman Erica 0025
Mc Cumber Foundation 701
Rosetta 601 of Mc Cumber

Leachman Right Time
Rosetta 577 of Mc Cumber
Rosetta 162 of Mc Cumber

Ind. Record	
BW	88
WW	677
205	656
WR	98
ADG	3.81
YW	1,184
365	1,266
YR	103
IMF	3.38/97
REA	12.2/98
FAT	.34/113

EPDs											Dam's Prod.		
BW	WW	YW	Milk	SC	IMF	REA	Fat	\$W	\$B		BW	WW	YW
+ .8	+ 37	+ 80	+ 22	+ .09	+ .10	- .10	+ .042	22.64	22.73		3 - 95	3 - 96	3 - 101

Recommended for use on heifers- This big, stout Rainmaker performed near the top on test. He gained 3.81 lbs/day to ratio 108 and earned a 365 day weight of 1266 lbs to ratio 103. His easy fleshing, neat uddered dam is a member of the Rosetta cow family and is a maternal sister to Mc Cumber 6122 Equator 419, who was used AI here at Mc Cumber, and Mc Cumber 4X13 Extra 8013 who was the featured Lot 3 bull in our 2009 bull sale to the Schaak Ranch in SD. Her light birth, productive dam was a donor for us, and one of the top Mc Cumber Foundation 701 daughters on the Ranch.



Mc Cumber 780 Emblazon 0026

0026 is a super complete, good performing son of Coleman Emblazon 780 with above average performance across the board. He scanned well with a REA of 13.9 to ratio 114, and has a masculine, muscular look about him. His dam is a good uddered, easy fleshing daughter of S Right Time



Mc Cumber 6536 Rainmakr 0191

Lot:

60 Mc Cumber 6536 Rainmakr 0191

Calved
3/9/2010

Reg. #
16684305

Sitz Rainmaker 6169
Sitz Rainmaker 6536
Sitz Elsiemere 331

Sitz Rainmaker 8987
Sitz Barbaramere Jet 3007
Sitz Alliance 6595
Sitz Elsiemere 1909
Tehama Bando 155
Miss Wix 365 of Mc Cumber
Mc Cumber 953 Rito 420
Miss Wix 9007 of Mc Cumber

Mc Cumber CLASSIC 202
Miss Wix 5153 of Mc Cumber
Miss Wix 110 of Mc Cumber

Ind. Record	
BW	93
WW	646
205	658
WR	99
ADG	3.63
YW	1,129
365	1,239
YR	102
IMF	3.30/94
REA	13.0/105
FAT	.42/140

EPDs											Dam's Prod.		
BW	WW	YW	Milk	SC	IMF	REA	Fat	\$W	\$B		BW	WW	YW
+ 2.1	+ 31	+ 63	+ 26		+ .16	+ .03	+ .025	22.10	22.40		4 - 100	4 - 100	1 - 102

0191 is a big topped, wide based son of Rainmaker. In addition to this he is deep from fore rib to flank and stands down wide and square on his feet and legs. This March born bull scanned a REA of 13.0 to ratio 105 and performed above average on both ADG and YW. His double bred Miss Wix dam is a long bodied, easy fleshing daughter of Mc Cumber Classic 202.



Sire of dam • Mc Cumber 6536 Rainmakr 0191

Lot:

61 Mc Cumber 780 Emblazon 0026

Calved
3/10/2010

Reg. #
16845332

O C C Emblazon 854E
Coleman Emblazon 780
Bohi Lady 1165

S Right Time 205
B Pride 4225 of Mc Cumber
B Pride 264 of Mc Cumber

D H D Traveler 6807
Dixie Erica of C H 1019
N Bar Emulation EXT
Ideal 4465 of 6807 4286
Leachman Right Time
S Elcona 076
Mc Cumber Powertrain HC 1025
B Pride 483 of Mc Cumber

Ind. Record	
BW	92
WW	605
205	661
WR	107
ADG	3.33
YW	1,104
365	1,194
YR	106
IMF	3.06/98
REA	13.9/114
FAT	.26/113

EPDs											Dam's Prod.		
BW	WW	YW	Milk	SC	IMF	REA	Fat	\$W	\$B		BW	WW	YW
+ 2.0	+ 44	+ 80	+ 22		- .02	+ .38	+ .013	26.23	28.37		3 - 103	3 - 104	2 - 103

205, and a member of the B Pride cow family. She produced one son that sold to Larry and David Kraft in ND.



Mc Cumber 6536 Rainmakr 0200

Lot:

62 Mc Cumber 6536 Rainmakr 0200

Calved
3/21/2010

Reg. #
16684314

Sitz Rainmaker 6169
Sitz Rainmaker 6536
Sitz Elsiemere 331

S A V 8180 Traveler 004
Miss Wix 5017 of Mc Cumber
Miss Wix 702 of Mc Cumber

Sitz Rainmaker 8987
Sitz Barbaramere Jet 3007
Sitz Alliance 6595
Sitz Elsiemere 1909
Sitz Traveler 8180
Boyd Forever Lady 8003
Mc Cumber 124 Traveler 212
Miss Wix 235 of Mc Cumber

Ind. Record	
BW	84
WW	611
205	652
WR	98
ADG	3.86
YW	1,124
365	1,270
YR	104
IMF	3.16
REA	13.3
FAT	.27

EPDs										Dam's Prod.		
BW	WW	YW	Milk	SC	IMF	REA	Fat	\$W	\$B	BW	WW	YW
+1.6	+37	+80	+25	+.24	+.15	+.00	+.056	22.30	24.80	4-103	4-103	4-103

Selling 2/3 interest and full possession- Recommended for use on heifers- Here is one good looking, well made son of Rainmaker, which is evident by his excellent photo. This legitimate herd bull prospect could of easily have made his way up the sale order. 0200 is loaded with muscle. He is deep bodied, wide based, and super fronted. This good scamp had outstanding post weaning performance with an ADG of 3.86 to ratio 111, and a 365 day weight of 1270 lbs. He was too young for adjusted ultrasound data but had an actual REA of 13.3, and if adjusted would have been right near the top in that department. His big bodied, near perfect uddered dam is a productive member of the Miss Wix cow family and is a daughter of the most productive full sister to Mc Cumber Foundation 701. Miss Wix 5017 is off to a good start with a WWR 4@103, YWR 4@103, IMF 3@102, and REA 3@100. She has produced two other sons that sold to Chuck Volk, and Austin Varty in ND. Her full sister was a sale feature of our 2006 cow sale and sold to Randy Miller in IA for \$8000. Her dam has produced many sons that have sold to top cattleman around the region.

This March 21st born bull is one of the youngest bulls in the sale, and definitely one of the best. His unique pedigree, outstanding structure, extra muscle, and maternal heritage make him a legitimate herd bull prospect.

Grand dam • Miss Wix 702 of
McCumber Foundation 701 full
brother to Grand dam



Full sister to Grand dam • Miss Wix
705 of Mc Cumber

Great Grand dam- Miss
Wix 235 of Mc Cumber



Lot:

63 Mc Cumber 780 Emblazon 045Calved
1/25/2010Reg. #
16844520O C C Emblazon 854E
Coleman Emblazon 780
Bohi Lady 1165Leachman Right Time
Blackcap 4139 of Mc Cumber
Blackcap 631 of Mc CumberD H D Traveler 6807
Dixie Erica of CH 1019
N Bar Emulation EXT
Ideal 4465 of 6807 4286
N Bar Emulation EXT
Leachman Erica 0025
Mc Cumber 124 Traveler 212
Blackcap 231 of Mc Cumber

Ind. Record	
BW	76
WW	660
205	593
WR	89
ADG	4.17
YW	1,214
365	1,260
YR	103
IMF	3.12/89
REA	12.4/100
FAT	.26/87

EPDs										Dam's Prod.		
BW	WW	YW	Milk	SC	IMF	REA	Fat	\$W	\$B	BW	WW	YW
-.8	+40	+80	+16		-.03	+.18	-.025	24.89	26.62	3-91	3-88	3-95

Recommended for use on heifers- This bull got sick last spring and it really affected his weaning weight however since then he has recovered and went on to be one of the top gaining bulls on test with an ADG 4.17 to ratio 120, and earned a 365 day weight of 1260 lbs to ratio 103. 045 is a masculine, deep bodied, thick made son of Coleman Emblazon 780. His dam is a consistently light birth weight daughter of Right Time with an average birth weight of 77 lbs on 5 calves and was produced from 2 consecutive generations of pathfinders.



Sire • Coleman Emblazon 780

Lot:

64 Mc Cumber 4X13 Extra 0109Calved
2/3/2010Reg. #
16684225N Bar Emulation EXT
Sinclair Extra 4X13
N Bar Lady Ida S C C 2P37Mc Cumber 004 Traveler 6120
Miss Wix 8160 of Mc Cumber
Miss Wix 317 of Mc CumberEmulation N Bar 5522
N Bar Primrose 2424
N Bar Prime Time D806
N Bar Lady Ida F1080
S A V 8180 Traveler 004
Erianna 2206 of Mc Cumber
BT New Trend 172K
Miss Wix 0192 of Mc Cumber

Ind. Record	
BW	78
WW	625
205	653
WR	98
ADG	3.63
YW	1,108
365	1,234
YR	101
IMF	4.64/133
REA	11.9/96
FAT	.29/97

EPDs										Dam's Prod.		
BW	WW	YW	Milk	SC	IMF	REA	Fat	\$W	\$B	BW	WW	YW
+.8	+39	+72	+23		+.62	-.27	+.038	27.09	41.65	1-96	1-98	1-101

Recommended for use on heifers- 0109 is a wide based smooth fronted son of 4x13. He carries extra width and expression down his top and out into a large hip and hind quarter. He gained well on test with an ADG of 3.63 lbs/day and had an IMF of 4.64 to ratio 133. His moderate framed, easy fleshing dam is a daughter of Mc Cumber 004 Traveler 6120 and catches the eye of most visitors to the Ranch.

Lot:

65 Mc Cumber 780 Emblazon 0018Calved
2/19/2010Reg. #
16845326O C C Emblazon 854E
Coleman Emblazon 780
Bohi Lady 1165S A V 8180 Traveler 004
Blackcap 6125 of Mc Cumber
Blackcap 267 of Mc CumberD H D Traveler 6807
Dixie Erica of CH 1019
N Bar Emulation EXT
Ideal 4465 of 6807 4286
Sitz Traveler 8180
Boyd Forever Lady 8003
Pine Creek Right Time 1147
Blackcap 0197 of Mc Cumber

Ind. Record	
BW	88
WW	628
205	655
WR	106
ADG	3.55
YW	1,160
365	1,223
YR	108
IMF	3.07/98
REA	10.5/86
FAT	.25/109

EPDs										Dam's Prod.		
BW	WW	YW	Milk	SC	IMF	REA	Fat	\$W	\$B	BW	WW	YW
+1.9	+52	+94	+21		+.02	-.07	+.017	27.38	29.86	2-100	2-107	1-108

Recommended for use on heifers- 0018 is a long bodied, growthy son of Coleman Emblazon 780. He performed well at every performance measure with a WWR of 106, an ADG on test of 3.94 lbs/day, and a YWR of 108. His feminine fronted neat uddered dam is a highly productive daughter of 004. She has a WWR of 2@107, and YWR 1@108. Her pathfinder dam by Pine Creek Right Time has been a top producer with a WWR 6@106, and YWR 6@107.

Lot:

66 Mc Cumber 829 Extra 0144Calved
2/9/2010Reg. #
16684259Sinclair Extra 4X13
Mc Cumber 4X13 Extra 829
Miss Wix 6114 of Mc CumberMc Cumber New Trend 1206
Blue Ribbon 4200 Mc Cumber
Blue Ribbon 808 Mc CumberN Bar Emulation EXT
N Bar Lady Ida S C C 2P37
S A V 8180 Traveler 004
Miss Wix 2027 of Mc Cumber
A A R New Trend
Miss Wix 705 of Mc Cumber
Circle Oak Lucys Boy 625
Blue Ribbon 641 of Mc Cumber

Ind. Record	
BW	97
WW	708
205	661
WR	99
ADG	3.31
YW	1,148
365	1,191
YR	97
IMF	2.25/64
REA	12.4/100
FAT	.28/93

EPDs										Dam's Prod.		
BW	WW	YW	Milk	SC	IMF	REA	Fat	\$W	\$B	BW	WW	YW
+3.5	+34	+60	+23		+.10	-.08	+.022	21.69	24.71	5-100	5-93	4-95

This masculine, muscular bull is a real eye catcher. He is long bodied, thick topped, and wide rumped. He puts a foot down in all four corners and travels free and easy. His moderate framed dam is easy fleshing, wide based, and fertile.



Mc Cumber 4X13 Extra 0109

Lot:

67 Mc Cumber Tremendous 051

Calved
1/26/2010

Reg. #
16684358

O C C Emblazon 854E
O C C Tremendous 619T
O C C Dixie Erica 960H

Sinclair Extra 4X13
Miss Wix 6117 of Mc Cumber
Miss Wix 8002 of Mc Cumber

D H D Traveler 6807
Dixie Erica of C H 1019
O C C Anchor 771A
O C C Dixie Erica 907C
N Bar Emulation EXT
N Bar Lady Ida S C C 2P37
G D A R Royce 131
Miss Wix 098 of Mc Cumber

Ind. Record	
BW	79
WW	700
205	648
WR	97
ADG	3.27
YW	1,135
365	1,171
YR	96
IMF	2.58/74
REA	14.4/116
FAT	.27/90

EPDs										Dam's Prod.		
BW	WW	YW	Milk	SC	IMF	REA	Fat	\$W	\$B	BW	WW	YW
-2	+40	+65	+18		+.00	+.40	+.015	3.07	28.54	2-102	2-106	2-107

Recommended for use on heifers- Here is one heavy muscled, chunk by OCC Tremendous 619T. 051 is moderate framed, deep bodied and as thick as you can make em'. He started life at 79 lbs and weaned off his 4x13 dam at 700 lbs. Along with this he had one of the largest REA in the contemporary with a REA of 14.6 to ratio 116 and a REA/CWT of 1.30. His dam by 4X13 is produced from 5 consecutive generations of Miss Wix pathfinders. She is big bodied, wide made, and easy fleshing. She has gotten off to a good start with a WWR 2@106, YWR 2@107, and REA 2@120. The mating of Tremendous to a 4X13 daughter ensures light birth, forage efficient, problem free cattle.

Lot:

68 Mc Cumber 6536 Rainmakr 0110

Calved
2/3/2010

Reg. #
16684227

Sitz Rainmaker 6169
Sitz Rainmaker 6536
Sitz Elsiemere 331

Sitz Triangle S Valubull
Miss Wix 632 of Mc Cumber
Miss Wix 4205 of Mc Cumber

Sitz Rainmaker 8987
Sitz Barbaramere Jet 3007
Sitz Alliance 6595
Sitz Elsiemere 1909
Sitz Value 7097
Sitz Barbaramere Nell 1590
Mc Cumber New Trend 1206
Miss Wix 0001 of Mc Cumber

Ind. Record	
BW	79
WW	680
205	642
WR	96
ADG	3.67
YW	1,168
365	1,229
YR	100
IMF	3.07/88
REA	10.9/88
FAT	.32/107

EPDs										Dam's Prod.		
BW	WW	YW	Milk	SC	IMF	REA	Fat	\$W	\$B	BW	WW	YW
-1.3	+32	+69	+25	+.08	+.19	-.10	+.037	25.08	17.68	3-96	3-97	3-102

Recommended for use on heifers- This true calving ease prospect by Sitz Rainmaker 6536 is backed by multiple generations of light birth weight females. This good gaining heifer bull candidate had an ADG of 3.67 to ratio 106 and has one of the lowest BW EPDs of -1.6 and Calving Ease Direct of +11 of any bull in this sale. His beautiful Sitz Valubull dam has been extremely light birth weight with a BWR 3@96, and average birth weight of 83 lbs on 3 calves. In addition to this she has settled first service AI every year and has produced two other sons that have sold through past sales to Maneth Land and Cattle in KS, and Jason Gleason in ND.

Not only is 0110 a sure bet on heifers, but should be a sire of fertile, moderate framed, easy fleshing females.



Maternal brother • Mc Cumber 6120 Traveler 9138

Lot:

69 Mc Cumber 7150 Traveler 079

Calved
1/30/2010

Reg. #
16684382

S A V 8180 Traveler 004
Mccumber Hard Drive 7150
Lassie 206 of Mc Cumber

Mc Cumber 6122 Equator 419
Rosetta 771 of Mc Cumber
Rosetta 294 of Mc Cumber

Sitz Traveler 8180
Boyd Forever Lady 8003
Leachman Right Time
Lassie 272 of Mc Cumber
Mc Cumber Equator 6122
Rosetta 162 of Mc Cumber
BT New Trend 172K
Rosetta 849 of Mc Cumber

Ind. Record	
BW	98
WW	744
205	720
WR	108
ADG	3.46
YW	1,204
365	1,274
YR	104
IMF	3.31/95
REA	13.4/108
FAT	.29/97

EPDs										Dam's Prod.		
BW	WW	YW	Milk	SC	IMF	REA	Fat	\$W	\$B	BW	WW	YW
+4.9	+45	+83	+27		+.13	+.25	+.024	2.10	39.88	2-107	2-106	2-104

079 is one of the bigger framed bulls in the sale. He stands down square and wide, and moves freely as he travels. He earned a 205 day weight of 720 to ratio 108, and a 365 day weight of 1274 lbs to ratio 104. He scanned a large REA as well with a REA of 13.4 to ratio 108. His dam is a productive daughter of Mc Cumber 6122 Equator 8113 with a WWR 2@106, YWR 2@104, IMF 2@103, and REA 2@108.

Lot:

70 Mc Cumber 6536 Rainmaker 091

Calved
2/1/2010

Reg. #
16684393

Sitz Rainmaker 6169
Sitz Rainmaker 6536
Sitz Elsiemere 331

BT New Trend 172K
Lady Barbola 4148 Mc Cumber
Lady Barbola 171 Mc Cumber

Sitz Rainmaker 8987
Sitz Barbaramere Jet 3007
Sitz Alliance 6595
Sitz Elsiemere 1909
A A R New Trend
BT Everelda Entense 57D
Mc Cumber Foundation 701
Lady Barbola 684 Mc Cumber

Ind. Record	
BW	84
WW	710
205	649
WR	97
ADG	3.11
YW	1,123
365	1,147
YR	94
IMF	4.30/123
REA	10.1/81
FAT	.25/83

EPDs										Dam's Prod.		
BW	WW	YW	Milk	SC	IMF	REA	Fat	\$W	\$B	BW	WW	YW
+.7	+31	+60	+27		+.21	-.18	+.010	25.09	18.44	5-100	5-103	5-101

Recommended for use on heifers-

This is a long bodied, smooth made bull with a large scrotal and good disposition. He scanned well with an IMF of 4.30 to ratio 123. His dam is a near perfect uddered daughter of BT New Trend 172K, and is off to a good start with a WWR 5@103, YWR 5@101, and REA 5@101. She has one daughter here at Mc Cumber and one daughter sold to Aaron and Sheyna Strommen in ND.

Lot:

71 Mc Cumber 6536 Rainmakr 0186Calved
3/4/2010Reg. #
16684299

Sitz Rainmaker 6169
Sitz Rainmaker 6536
Sitz Elsiemere 331

Leachman Right Time
Miss Wix 5009 of Mc Cumber
Miss Wix 7007 of Mc Cumber

Sitz Rainmaker 8987
Sitz Barbaramere Jet 3007
Sitz Alliance 6595
Sitz Elsiemere 1909
N Bar Emulation EXT
Leachman Erica 0025
Mc Cumber 124 Traveler 212
Miss Wix 030 of Mc Cumber

Ind. Record

BW	93
WW	704
205	705
WR	106
ADG	3.34
YW	1,148
365	1,239
YR	102
IMF	3.18/91
REA	12.5/101
FAT	.32/107

EPDs											Dam's Prod.		
BW	WW	YW	Milk	SC	IMF	REA	Fat	\$W	\$B		BW	WW	YW
+2.2	+38	+72	+25		+.06	+.03	+.038	24.22	21.99		3-106	3-100	2-98

0186 is a stout made, long striding son of Rainmaker 6536. He earned a 205 day weight of 705 lbs to ratio 106, and recorded a 365 day weight of 1239 lbs to ratio 102. His dam is an easy fleshing, neat uddered daughter of Right Time, with good feet, and plenty of natural thickness. She is a maternal sister to Mc Cumber Total Value 449 who sold through our 2005 bull sale as the high seller to Larry Wunderlich in TX, and is a full sister to Miss Wix 5003 of Mc Cumber who sold as a feature of our 2006 female sale to 12 Star Angus in LA. Rainmaker on our Right Time daughters has been a nice mating for creating good performing, deep bodied, easy keeping cattle. We have several 3/4 sisters as a result of this mating in our replacement pen.

Lot:

72 Mc Cumber 780 Emblazon 014Calved
1/21/2010Reg. #
16844518

O C C Emblazon 854E
Coleman Emblazon 780
Bohi Lady 1165

Sinclair True Value 6PV20
Gale 8187 of Mc Cumber
Gale 6110 of Mc Cumber

D H D Traveler 6807
Dixie Erica of C H 1019
N Bar Emulation EXT
Ideal 4465 of 6807 4286
Sinclair Net Present Value
N Bar Miss Emulous A404
S A V 8180 Traveler 004
Gale 836 of Mc Cumber

Ind. Record

BW	65
WW	676
205	680
WR	102
ADG	3.35
YW	1,122
365	1,216
YR	99
IMF	2.64/75
REA	12.7/102
FAT	.31/103

EPDs											Dam's Prod.		
BW	WW	YW	Milk	SC	IMF	REA	Fat	\$W	\$B		BW	WW	YW
-2.4	+41	+71	+21		+.15	+.19	+.017	31.46	28.86		1-81	1-102	1-99

Recommended for use on heifers- After starting life at just 65 lbs, 014 went on to earn a 205 day weight of 680 lbs to ratio 102 and had a REA of 12.7 to ratio 102. 014 is a heavy muscled, wide based calving ease prospect that has the highest calving ease direct EPD in the sale at +14, and one of the lowest BW EPD's in the sale at -2.4. His outcross pedigreed dam is a neat uddered, productive daughter of Net Present Value, and weaned off a large percentage of her body weight. This sure shot heifer bull should sire light birth progeny that still have early growth.

Lot:

73 Mc Cumber 718 Extra 020Calved
1/22/2010Reg. #
16684313

Sinclair Extra 4X13
Mc Cumber 4X13 Extra 718
Miss Wix 409 of Mc Cumber

Mc Cumber NEXT STEP 9012
B Pride 239 of Mc Cumber
B Pride 090 of Mc Cumber

N Bar Emulation EXT
N Bar Lady Ida S C C 2P37
S A V 8180 Traveler 004
Miss Wix 2022 HC Mc Cumber
Mc Cumber Foundation 701
Gale 607 of Mc Cumber
Mr Wix of Mc Cumber 204
B Pride 7159 of Mc Cumber

Ind. Record

BW	91
WW	680
205	609
WR	91
ADG	3.50
YW	1,146
365	1,169
YR	95
IMF	2.84/81
REA	12.1/98
FAT	.29/97

EPDs											Dam's Prod.		
BW	WW	YW	Milk	SC	IMF	REA	Fat	\$W	\$B		BW	WW	YW
+2.8	+30	+54	+26	-.24	+.12	-.18	+.045	22.43	2.37		7-105	7-103	7-100

020 is a big framed, long bodied son of Mc Cumber 4x13 Extra 718. His dam was injured last spring and thus caused 020 to wean off a little lighter.

Sire • Mc Cumber 4X13 Extra 718



Lot:

74 Mc Cumber 6536 Rainmakr 0148Calved
2/11/2010Reg. #
16684263

Sitz Rainmaker 6169
Sitz Rainmaker 6536
Sitz Elsiemere 331

Mc Cumber 7078 VRD 3108
Gale 6206 of Mc Cumber
Gale 9120 of Mc Cumber

Sitz Rainmaker 8987
Sitz Barbaramere Jet 3007
Sitz Alliance 6595
Sitz Elsiemere 1909
Vermillion Dateline 7078
Lassie 974 of Mc Cumber
Mc Cumber Foundation 701
Gale 6169 of Mc Cumber

Ind. Record

BW	98
WW	672
205	650
WR	97
ADG	3.88
YW	1,188
365	1,271
YR	104
IMF	3.98/114
REA	12.4/100
FAT	.32/107

EPDs											Dam's Prod.		
BW	WW	YW	Milk	SC	IMF	REA	Fat	\$W	\$B		BW	WW	YW
+4.0	+30	+73	+23		+.23	-.07	+.028	13.78	24.65		3-105	3-95	2-102

This big, stout son of Rainmaker had outstanding post weaning performance. He gained 3.88 lbs/day to ratio 112 and earned a 365 day weight of 1271 lbs to ratio 104. He scanned very well with an IMF of 3.98 to ratio 114, and had a REA of 12.4 to ratio 100. His dam is a stout, big bodied daughter of Mc Cumber 7078 VRD 3108 and combines two of the best Mc Cumber Foundation 701 daughters we have produced in Lassie 974 of Mc Cumber, who was the high selling cow in our 2006 female sale to Haywood Farms in MI, and Gale 9120 of Mc Cumber, who sold to Dave, Mark, and Rick Mc Conville in NE.

Lot:

75 Mc Cumber 829 Extra 0149**Ind. Record**

Calved
2/12/2010

Reg. #
16684264

BW	97
WW	723
205	681
WR	102
ADG	3.26
YW	1,157
365	1,203
YR	98
IMF	3.23/92
REA	12.1/98
FAT	.23/77

Sinclair Extra 4X13
Mc Cumber 4X13 Extra 829
Miss Wix 6114 of Mc Cumber

N Bar Emulation EXT
N Bar Lady Ida S C C 2P37
S A V 8180 Traveler 004
Miss Wix 2027 of Mc Cumber
Mc Cumber 6122 Equator 8113
B Pride 7159 of Mc Cumber
Sitz Traveler 5556
Miss Wix 7111 of McCumber

Mc Cumber 8113 Equator 1190
Miss Wix 477 of Mc Cumber
Miss Wix 2024 HC Mc Cumber

EPDs										Dam's Prod.		
BW	WW	YW	Milk	SC	IMF	REA	Fat	\$W	\$B	BW	WW	YW
+3.6	+46	+78	+24		+.21	-.04	+.038	25.11	33.62	4-109	4-103	4-101

This masculine, long bodied, free moving son of Mc Cumber 4x13 Extra 829 is produced from a triple bred Miss Wix 365 of Mc Cumber pathfinder dam. 0149 weaned off his dam at 702 lbs. I think you will like this sire group.

McCumber
Angus
Ranch

Cow herd known for
outstanding maternal traits

Lot:

76 Mc Cumber 536P EXT 048**Ind. Record**

Calved
1/26/2010

Reg. #
16684355

BW	78
WW	685
205	659
WR	99
ADG	2.92
YW	1,074
365	1,126
YR	92
IMF	3.10/89
REA	11.6/94
FAT	.25/83

N Bar Emulation EXT
Sitz JLS Emulation EXT 536P
Ideal 4465 of 6807 4286

Emulation N Bar 5522
N Bar Primrose 2424
D H D Traveler 6807
E E 4286 of Ideal 2240 1254
S A V 8180 Traveler 004
Miss Wix 301 of Mc Cumber
Leachman Right Time
Gale 839 of Mc Cumber

Mc Cumber 004 Traveler 513
Gale 709 of Mc Cumber
Gale 5102 of Mc Cumber

EPDs										Dam's Prod.		
BW	WW	YW	Milk	SC	IMF	REA	Fat	\$W	\$B	BW	WW	YW
+ .3	+32	+56	+27	-.37	+.05	-.05	+.020	27.75	25.18	2-93	2-105	2-98

Recommended for use on heifers- This is one of the few true heifer bulls by 536P. He started life at just 78 lbs out of second calver, and his dam has a BWR of 2@93, and 3 calves with an average birth weight of 76 lbs. She has a calving interval of 3@362, and has never missed settling AI. She produced one other son that sold to Kevin Tyler in ND, and is nursing her 3rd bull calf, the first calf born this spring.

**Mc Cumber Missing Link 056**

Lot:

77 Mc Cumber Missing Link 056**Ind. Record**

Calved
1/27/2010

Reg. #
16696668

BW	83
WW	661
205	677
WR	101
ADG	3.49
YW	1,125
365	1,235
YR	101
IMF	3.97/113
REA	12.1/98
FAT	.29/97

O C C Headliner 661H
O C C Missing Link 830M
O C C Dixie Erica 946K

O C C Emblazon 854E
O C C Juanada 858F
O C C Glory 950G
O C C Dixie Erica 816B
N Bar Emulation EXT
N Bar Lady Ida S C C 2P37
S A V 8180 Traveler 004
B Pride VJR 1130 Mc Cumber

Sinclair Extra 4X13
B Pride 865 of Mc Cumber
B Pride 682 of Mc Cumber

EPDs										Dam's Prod.		
BW	WW	YW	Milk	SC	IMF	REA	Fat	\$W	\$B	BW	WW	YW
+1.2	+45	+78	+19		+.22	+.13	+.030	28.53	38.10	1-102	1-101	1-101

Recommended for use on heifers- 056 is just like you would expect a Missing Link to be. He is thick, deep, and heavy muscled. He tracks wide as he travels, and puts a foot down in all four corners. He has ratios just above average on all his performance measurements and scanned very well for IMF with a score of 3.97 to ratio 113. His dam is a fertile, moderate framed, easy fleshing daughter of 4X13 and is nursing a super nice heifer calf by 9112, already this year. We bred nearly all of our 4x13 heifers to Missing Link last year and have a large group of 3/4 sibs to this bull on the ground this Spring.

Lot:

78 Mc Cumber 829 Extra 0104Calved
2/3/2010Reg. #
16684221Sinclair Extra 4X13
Mc Cumber 4X13 Extra 829
Miss Wix 6114 of Mc CumberMc Cumber CLASSIC 202
Miss Wix 5184 of Mc Cumber
Miss Wix 2129 of Mc CumberN Bar Emulation EXT
N Bar Lady Ida S C C 2P37
S A V 8180 Traveler 004
Miss Wix 2027 of Mc Cumber
Tehama Bando 155
Miss Wix 365 of Mc Cumber
Mc Cumber Foundation 701
Miss Wix 765 of Mc Cumber

Ind. Record	
BW	89
WW	656
205	604
WR	90
ADG	3.71
YW	1,149
365	1,198
YR	98
IMF	2.88/82
REA	11.9/96
FAT	.30/100

EPDs										Dam's Prod.		
BW	WW	YW	Milk	SC	IMF	REA	Fat	\$W	\$B	BW	WW	YW
+2.2	+37	+67	+25		+14	-.15	+.025	24.97	28.26	3-98	3-105	3-105

This extra stout, masculine 829 is deep bodied, wide tracking, and big scrotaled. His dam is a feminine, neat uddered daughter of Mc Cumber Classic 202 and has been very productive with a BWR 3@98, WWR 3@105, and YWR 3@105. She has produced one son that sold to Bruce Weeter in WY, and one daughter retained here at Mc Cumber.

Lot:

79 Mc Cumber Tremendous 0157Calved
2/16/2010Reg. #
16684270O C C Emblazon 854E
O C C Tremendous 619T
O C C Dixie Erica 960HLeachman Right Time
Blackcap 8141 of Mc Cumber
Blackcap 2213 of Mc CumberD H D Traveler 6807
Dixie Erica of C H 1019
O C C Anchor 771A
O C C Dixie Erica 907C
N Bar Emulation EXT
Leachman Erica 0025
Mc Cumber 6122 Equator 8113
Blackcap 5126 of Mc Cumber

Ind. Record	
BW	76
WW	645
205	693
WR	104
ADG	3.48
YW	1,108
365	1,250
YR	102
IMF	3.51/100
REA	11.9/96
FAT	.21/70

EPDs										Dam's Prod.		
BW	WW	YW	Milk	SC	IMF	REA	Fat	\$W	\$B	BW	WW	YW
-.4	+44	+73	+16		+.00	+.11	+.002	29.70	29.02	1-94	1-104	1-102

Recommended for use on heifers- This shapely, calving ease son of OCC Tremendous 619T performed well across the board. After starting out at just 76 lbs, 0157 earned nearly a 700 lb 205 day weight without creep to ratio 104 as his dam's first calf. His dam is a near perfect uddered daughter of Right Time and has settled AI on her first two tries. Blackcap 8141 is produced from a top producing donor daughter of Mc Cumber 6122 Equator 8113, and sold in our 2009 female sale to Best Angus in ND.

Lot:

80 Mc Cumber 6536 Rainmakr 0178Calved
2/27/2010Reg. #
16684292Sitz Rainmaker 6169
Sitz Rainmaker 6536
Sitz Elsiemere 331S A V 8180 Traveler 004
Miss Wix 758 of Mc Cumber
Miss Wix 301 of Mc CumberSitz Rainmaker 8987
Sitz Barbaramere Jet 3007
Sitz Alliance 6595
Sitz Elsiemere 1909
Sitz Traveler 8180
Boyd Forever Lady 8003
Leachman Right Time
Miss Wix 1119 of Mc Cumber

Ind. Record	
BW	93
WW	640
205	672
WR	101
ADG	3.53
YW	1,110
365	1,237
YR	101
IMF	3.59/103
REA	12.2/98
FAT	.42/140

EPDs										Dam's Prod.		
BW	WW	YW	Milk	SC	IMF	REA	Fat	\$W	\$B	BW	WW	YW
+2.6	+41	+82	+24		+.13	+.04	+.063	22.36	27.99	2-101	2-103	1-101

Here is another good gaining, well made son of Rainmaker 6536. 0178 is a long bodied, thick rumped bull that performed above average on weaning, gain, yearling, and IMF. His moderate framed, neat uddered dam is a full sister to a past sale topper; Mc Cumber 004 Traveler 513, who sold to Larry Wunderlich in TX and was used back here successfully. His Grand dam is a herd bull producer with another son selling in last year's sale to Joe Bohl in ND for \$6000. Miss Wix 758's only daughter sold to Crider Ranch in our 2009 female sale.



Grand dam • Miss Wix 301 of Mc Cumber,



Full brother to dam • Mc Cumber 004 Traveler 513

Lot:

81 Mc Cumber 536P EXT 0188Calved
3/7/2010Reg. #
16684301N Bar Emulation EXT
Sitz JLS Emulation EXT 536P
Ideal 4465 of 6807 4286S A V 8180 Traveler 004
B Pride 7013 of Mc Cumber
B Pride 9124 of Mc CumberEmulation N Bar 5522
N Bar Primrose 2424
D H D Traveler 6807
E E 4286 of Ideal 2240 1254
Sitz Traveler 8180
Boyd Forever Lady 8003
Sitz Traveler 9929
B Pride 839 of Mc Cumber

Ind. Record	
BW	97
WW	635
205	684
WR	102
ADG	3.05
YW	1,040
365	1,172
YR	96
IMF	3.57/102
REA	11.0/89
FAT	.19/63

EPDs										Dam's Prod.		
BW	WW	YW	Milk	SC	IMF	REA	Fat	\$W	\$B	BW	WW	YW
+5.1	+37	+62	+24		+.14	-.11	+.015	2.01	34.23	2-105	2-95	1-96

0188 should be one cow making sun of a gun. He is a deep bodied, wide made son of 536P with extra stoutness, and masculinity. He earned a WWR of 102 and is produced from a big bodied, easy fleshing, stout made full sister to the herd bull prospects selling as Lot 4 and 22 in this sale. The 536P X 004 mating has been successful in producing females with fleshing ease, natural thickness, and udder quality.



Full brother to dam Lot 4 • 001 Mc Cumber 004 Traveler 001



Mc Cumber 8101 Traveler 0184

Lot:

82 Mc Cumber 8101 Traveler 0184

Calved
3/4/2010

Reg. #
16684298

Mc Cumber 004 Traveler 6120
Mc Cumber 6120 Traveler 8101
B Pride 2007 of Mc Cumber

S A V 8180 Traveler 004
Gale 439 of Mc Cumber
Gale 244 of Mc Cumber

S A V 8180 Traveler 004
Erianna 2206 of Mc Cumber
BT Traveler 228K
Lassie 587 of Mc Cumber
Sitz Traveler 8180
Boyd Forever Lady 8003
Mc Cumber Powertrain HC 1025
Gale 948 of Mc Cumber

Ind. Record											
BW	77	WW	600	205	680	WR	102	ADG	3.29	YW	1,038
365	1,206	YR	99	IMF	3.75/107	REA	13.8/111	FAT	.32/107		

EPDs											
BW	WW	YW	Milk	SC	IMF	REA	Fat	\$W	\$B	Dam's Prod.	
+3.5	+46	+86	+25		+.21	+.22	+.043	22.89	39.65	4-95	4-100

0184 is a moderate framed, big topped, thick quartered son of Mc Cumber 6120 Traveler 8101. 0184 was a twin with a heifer and thus had only a 77 lb birth weight however he should be used on cows. This March born bull was outstanding on ultrasound with an IMF of 3.75 to ratio 107, and REA of 13.8 to ratio 111. In addition, he earned a REA/CWT of 1.36. His dam is a high volume, easy fleshing daughter of 004, who has produced 4 daughters that have sold to CSF Angus in VA, JSK Angus in NY, Circle V Angus in ND, and Schaak Ranch in SD.

Lot:

83 Mc Cumber 6536 Rainmakr 0212

Calved
4/3/2010

Reg. #
16684324

Sitz Rainmaker 6169
Sitz Rainmaker 6536
Sitz Elsiemere 331

Sitz Alliance 6595
Erianna 5144 of Mc Cumber
Erianna 3216 of Mc Cumber

Sitz Rainmaker 8987
Sitz Barbaramere Jet 3007
Sitz Alliance 6595
Sitz Elsiemere 1909
Sitz Traveler 8180
Sitz Barbaramere Jet 2698
BT New Trend 172K
Erianna 6148 of Mc Cumber

Ind. Record	
BW	83
WW	600
205	677
WR	101
ADG	
YW	1,056
365	
YR	
IMF	3.13
REA	13.0
FAT	.30

EPDs											
BW	WW	YW	Milk	SC	IMF	REA	Fat	\$W	\$B	Dam's Prod.	
+ .6	+ 37	+ 74	+ 27	+ .58	+ .16	- .12	+ .050	25.56	18.81	4-100	4-102

Recommended for use on heifers- This good looking, heavy muscled, wide rumped son of Rainmaker 6536 is an April born bull that performed well across the board. He had an actual REA of 13.1, which if it had been adjusted would have been near the top in that category. 0212 will catch your eye when you enter the pen and his highly productive dam has a

WWR 4@102 and is the Grand dam to the excellent Missing Link son selling as Lot 27 in this sale. This light birth calving ease prospect is stacked with many generations of top cow makers including 6595 2 times, 044, Right Time, AAR New Trend, 054 2 times, Viking, and 376.



Maternal brother • Mc Cumber 582 RT Time 9258

Lot:

84 Mc Cumber 4X13 Extra 0024

Calved
3/1/2010

Reg. #
16847190

N Bar Emulation EXT
Sinclair Extra 4X13
N Bar Lady Ida S C C 2P37

Sitz TRADITION RLS 8702
Miss Wix 608 of Mc Cumber
Miss Wix 928 of Mc Cumber

Emulation N Bar 5522
N Bar Primrose 2424
N Bar Prime Time D806
N Bar Lady Ida F1080
Vermillion Dateline 7078
R L S Eisa Evergreen 5018
Mc Cumber 054 Rito 5009
Miss Wix 498 of Mc Cumber

Ind. Record	
BW	89
WW	564
205	612
WR	99
ADG	3.45
YW	1,082
365	1,164
YR	103
IMF	3.69/118
REA	10.9/89
FAT	.32/139

EPDs											
BW	WW	YW	Milk	SC	IMF	REA	Fat	\$W	\$B	Dam's Prod.	
+ 2.7	+ 46	+ 80	+ 19		+ .41	- .19	+ .055	25.56	36.57	3-107	3-107

This 4X13 son is thick, deep, and free moving. He gained 3.80 lbs/day on test and had an IMF ratio of 118. His dam is a deep bodied, easy fleshing, neat uddered daughter of Sitz Tradition, and a member of the Miss Wix cow family. 4X13 is the most consistent sire we have ever used, and his daughters are a mainstay on the Ranch, we have calved nearly 100 daughters of him this year.

Sale Day Telephones

701.246.3366
701.871.9800
701.871.1072

Or Contact Superior Productions at
1-800-831-4452 to pre-register for a buyer's
number and gain access to the bid line number.

McCumber
Angus Ranch

Lot:

85 Mc Cumber 6536 Rainmakr 0168

											Ind. Record		
Calved		Reg. #									BW	86	
2/20/2010		621067899									WW	600	
											205	609	
											WR	95	
											ADG	3.88	
											YW	1,116	
											365	1,230	
											YR	105	
											IMF	3.29/100	
											REA	13.8/108	
											FAT	.27/93	

EPDs											Dam's Prod.		
BW	WW	YW	Milk	SC	IMF	REA	Fat	\$W	\$B		BW	WW	YW
											1 - 104	1 - 95	1 - 105

Recommended for use on heifers- 0168 is a commercial bull, so if you plan on participating in the Angus Source program he will not work for you. 0168 is a masculine, meaty son of Rainmaker with excellent post weaning performance. He gained 3.88 lbs/day and earned a 365 day weight of 1230 lbs to ratio 105. His moderate framed, easy fleshing dam is neat uddered, good footed, and productive.



Maternal brother to dam • Mc Cumber 4X13 Extra 8013

Lot:

86 Mc Cumber 751 Extra 0134

											Ind. Record		
Calved		Reg. #									BW	100	
2/7/2010		16684250									WW	653	
											205	608	
											WR	91	
											ADG	3.89	
											YW	1,170	
											365	1,230	
											YR	101	
											IMF	3.78/108	
											REA	12.4/100	
											FAT	.40/133	

EPDs											Dam's Prod.		
BW	WW	YW	Milk	SC	IMF	REA	Fat	\$W	\$B		BW	WW	YW
+4.1	+39	+72	+16		+42	+10	+035	18.92	41.85		4 - 108	4 - 93	3 - 98

0134 is a heavy muscled, wide tracking cow bull by Mc Cumber 4X13 Extra 751. He has real good performance with an ADG of 3.89 lbs/day to ratio 112, and he earned a 365 day weight of 1230 lbs to ratio 101. His dam is a stout, big bodied, easy fleshing daughter of Mc Cumber 7078 VRD 3116. Additionally, her udder is neat and tidy with small well placed teats and snug rear and fore udder attachment. This bull will catch your eye.

Lot:

87 Mc Cumber 4X13 Extra 0121

											Ind. Record		
Calved		Reg. #									BW	84	
2/5/2010		16684236									WW	645	
											205	638	
											WR	96	
											ADG	3.33	
											YW	1,088	
											365	1,171	
											YR	96	
											IMF	2.90/83	
											REA	11.1/90	
											FAT	.25/83	

EPDs											Dam's Prod.		
BW	WW	YW	Milk	SC	IMF	REA	Fat	\$W	\$B		BW	WW	YW
+1.6	+40	+72	+21	-17	+25	-29	+036	26.43	32.29		2 - 100	2 - 95	2 - 97

Recommended for use on heifers- This is one long bodied, smooth made, high libido son of 4x13. He is a free moving, long strided bull that should be able to cover big country. His dam is an easy fleshing, neat uddered daughter of 004.

Lot:

88 Mc Cumber 4X13 Extra 088

											Ind. Record		
Calved		Reg. #									BW	80	
1/31/2010		16684390									WW	615	
											205	640	
											WR	96	
											ADG	4.15	
											YW	1,167	
											365	1,304	
											YR	107	
											IMF	4.40/126	
											REA	12.4/100	
											FAT	.28/93	

EPDs											Dam's Prod.		
BW	WW	YW	Milk	SC	IMF	REA	Fat	\$W	\$B		BW	WW	YW
+7	+38	+78	+21		+39	-25	+028	24.21	41.25		1 - 99	1 - 96	1 - 107

Recommended for use on heifers- 088 is one of the high gaining bulls on test with an ADG of 4.15 to ratio 120. Along with this, he earned a 365 day weight of 1304 lbs to ratio 107, and had an IMF of 4.40 to ratio 126. His dam is a neat uddered daughter of Right Time, and member of the Blackcap family. This calving ease prospect is smooth shouldered, long bodied, and free moving.



Grand dam • Blackcap 2213 of McCumber

Lot:

89 Mc Cumber 730 Paxton 052

Calved
1/26/2010

Reg. #
16696700

O C C Focus 813F
O C C Paxton 730P
O C C Blackbird 736K

LT Timberwolf 5014
Gale 841 of Mc Cumber
Gale 5001 of Mc Cumber

Basin Rainmaker 654X
Dixie Erica of C H 1019
O C C Great Plains 943G
O C C Blackbird 824G
Wulffs Ext 6106
L T Ethelda 3245
Leachman Right Time
Gale 948 of Mc Cumber

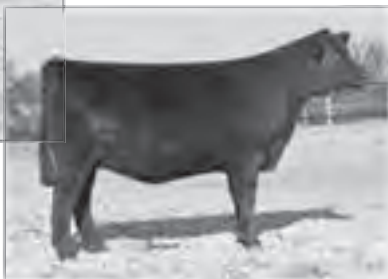
Ind. Record	
BW	76
WW	610
205	629
WR	94
ADG	3.52
YW	1,078
365	1,192
YR	97
IMF	3.14/90
REA	13.2/106
FAT	.20/67

EPDs										Dam's Prod.		
BW	WW	YW	Milk	SC	IMF	REA	Fat	\$W	\$B	BW	WW	YW
+ .5	+ 43	+ 78	+ 15		+ .10	+ .26	-.010	26.75	31.52	1 - 94	1 - 94	1 - 97

Recommended for use on heifers- Here is a real chunk by O C C Paxton 730P. 052 is a masculine, muscular, beef bull with calving ease credentials. He had a REA of 13.2 to ratio 106 and earned a REA/CWT of 1.29. You will definitely notice the extra muscle expression he displays. His dam is a fertile, good uddered daughter of LT Timberwolf 5014. This light birth weight bull is bred to ensure forage efficient, easy fleshing, problem free females.



Gale 02 of Mc Cumber



Lassie 010 of Mc Cumber

Lot:

90 Mc Cumber Missing Link 022

Calved
1/22/2010

Reg. #
16696670

O C C Headliner 661H
O C C Missing Link 830M
O C C Dixie Erica 946K

Mc Cumber 2700 Rt Time 582
Miss Wix 8228 of Mc Cumber
Miss Wix 651 of Mc Cumber

O C C Emblazon 854E
O C C Juanada 858F
O C C Glory 950G
O C C Dixie Erica 816B
Leachman Right Time
Gale 120 of Mc Cumber
Sinclair Extra 4X13
Miss Wix 477 of Mc Cumber

Ind. Record	
BW	65
WW	625
205	636
WR	95
ADG	3.57
YW	1,100
365	1,207
YR	99
IMF	3.46/99
REA	11.6/94
FAT	.20/67

EPDs										Dam's Prod.		
BW	WW	YW	Milk	SC	IMF	REA	Fat	\$W	\$B	BW	WW	YW
-1.3	+ 41	+ 73	+ 19		+ .08	+ .06	+ .007	29.42	27.89	1 - 81	1 - 95	1 - 99

Recommended for use on heifers- This sleep all night heifer bull has a 65 lb birth weight and a BW EPD of -1.3. He is a big scrotaled, deep bodied, sound structured son of Missing Link. He gained above average on test, and his dam is a flawless uddered Right Time dam who is nursing one of the lightest birth weight Sinclair Entrepreneur 8R101 sons born so far this spring, with a birth weight of 84 lbs. Put together a bunch of these bred alike bulls sire a consistent calf crop.



Mc Cumber 6536 Rainmaker 041

Lot:

91 Mc Cumber 6536 Rainmaker 041

Calved
1/25/2010

Reg. #
16684350

Sitz Rainmaker 6169
Sitz Rainmaker 6536
Sitz Elsiemere 331

S A V 8180 Traveler 004
Miss Wix 750 of Mc Cumber
Miss Wix 3154 of Mc Cumber

Sitz Rainmaker 8987
Sitz Barbaramere Jet 3007
Sitz Alliance 6595
Sitz Elsiemere 1909
Sitz Traveler 8180
Boyd Forever Lady 8003
BT Right Time 24J
Miss Wix 5007 of Mc Cumber

Ind. Record	
BW	70
WW	620
205	599
WR	90
ADG	3.74
YW	1,117
365	1,197
YR	98
IMF	3.24/93
REA	11.4/92
FAT	.32/107

EPDs										Dam's Prod.		
BW	WW	YW	Milk	SC	IMF	REA	Fat	\$W	\$B	BW	WW	YW
-.8	+ 35	+ 78	+ 21	+ .13	+ .06	-.06	+.055	23.42	18.47	2 - 78	2 - 91	2 - 98

Recommended for use on heifers- 041 is another light birth, good gaining son of Rainmaker 6536. He is a well made, moderate framed bull with plenty of depth and thickness. This calving ease Rainmaker had only a 70 lb birth weight, and has a CED of +11 and BW EPD of -0.8. His dam is a modest framed daughter of 004 and has been a consistently light birth weight female with a BWR of 2@78, and an average birth weight of 68 lbs on 3 calves. She has never missed by AI and has a calving interval of 3@358.



Maternal Grand dam • Miss Wix 3154 of Mc Cumber



Mc Cumber Missing Link 044

Lot:

92 Mc Cumber Missing Link 044

Calved
1/25/2010

Reg. #
16696666

O C C Headliner 661H
O C C Missing Link 830M
O C C Dixie Erica 946K

O C C Emblazon 854E
O C C Juanada 858F
O C C Glory 950G
O C C Dixie Erica 816B
N Bar Emulation EXT
N Bar Lady Ida S C C 2P37
S A V 8180 Traveler 004
Miss Wix 4109 of Mc Cumber

Sinclair Extra 4X13
Miss Wix 876 of Mc Cumber
Miss Wix 620 of Mc Cumber

Ind. Record												
BW	61	WW	650	205	662	WR	99	ADG	3.12	YW	1,065	365
												1,161
												95
												3.45/99
												12.5/101
												.31/103

EPDs												
BW	WW	YW	Milk	SC	IMF	REA	Fat	\$W	\$B	Dam's Prod.		
-3.2	+45	+71	+19		+ .07	+ .12	+ .023	34.39	27.17	1 - 77	1 - 99	1 - 95

Recommended for use on heifers- A light birth, calving ease son produced from the Missing Link X 4X13 mating bred to ensure moderate framed, forage efficient, easy fleshing females. 044 is the lightest actual birth weight bull in the sale with a birth weight of 61 lbs. He has a CED of +13, and a -3.2 birth weight EPD which ranks him as one of the surest bets for calving ease in the sale. In addition to this he has a REA/CWT of 1.23. Although, 044 is light birth he is stout made, deep bodied, and heavy muscled. His dam is a moderate framed, good uddered daughter of 4X13 that fleshes easily, and bred back early after raising her first calf.

Lot:

93 Mc Cumber 4X13 Extra 050

Calved
1/26/2010

Reg. #
16684357

N Bar Emulation EXT
Sinclair Extra 4X13
N Bar Lady Ida S C C 2P37

Sinclair Mountaineer 5PU2
Miss Wix 8203 of Mc Cumber
Miss Wix 5191 of Mc Cumber

Emulation N Bar 5522
N Bar Primrose 2424
N Bar Prime Time D806
N Bar Lady Ida F1080
Sinclair MT Time 2P77
Sinclair Heiress 3S54 J483
Mc Cumber TRADITION 383
Miss Wix 320 HC of Mc Cumber

Ind. Record	
BW	88
WW	625
205	644
WR	96
ADG	3.31
YW	1,065
365	1,174
YR	96
IMF	4.35/124
REA	11.1/90
FAT	.35/117

EPDs												
BW	WW	YW	Milk	SC	IMF	REA	Fat	\$W	\$B	Dam's Prod.		
+1.9	+33	+60	+19		+ .41	-.15	+.035	24.01	37.15	1 - 108	1 - 96	1 - 96

050 is an extra stout, wide based, masculine 4X13 son. He is a good looking bull with plenty of muscle and depth of body. His dam is a moderate framed, easy fleshing member of the Miss Wix cow family, already nursing a very nice 829 heifer this year.

McCumber
Angus
Ranch

Cow herd known for
outstanding maternal traits

Lot:

94 Mc Cumber 751 Extra 0111

Calved
2/3/2010

Reg. #
16684228

Sinclair Extra 4X13
Mc Cumber 4X13 Extra 751
Miss Wix 5139 of Mc Cumber

Vermillion Dateline 7078
Lovely Lady 482 of Mc Cumber
Lovely Lady 0208 Mc Cumber

N Bar Emulation EXT
N Bar Lady Ida S C C 2P37
BT Right Time 24J
Miss Wix 7111 of McCumber
Connealy Dateline
Vermilion Blackbird 5044
Mc Cumber 6122 Equator 8113
Lovely Lady 721 of Mc Cumber

Ind. Record	
BW	79
WW	635
205	584
WR	87
ADG	3.31
YW	1,075
365	1,114
YR	91
IMF	2.14/61
REA	11.5/93
FAT	.21/70

EPDs												
BW	WW	YW	Milk	SC	IMF	REA	Fat	\$W	\$B	Dam's Prod.		
+ .5	+37	+68	+20	-.16	+.09	+.11	-.008	26.33	31.97	5 - 97	5 - 99	4 - 102

Recommended for use on heifers- This well made, free moving son of 751 is produced from a VRD daughter who has raised 3 other sons that sold to CSF Angus in VA, Yuly Ranch in ND, and Mark Novak in ND.

Lot:

95 Mc Cumber 6536 Rainmakr 0143

Ind. Record	
BW	90
WW	640
205	639
WR	100
ADG	3.82
YW	1,148
365	1,250
YR	107
IMF	3.48/106
REA	13.2/103
FAT	.40/138

Calved
2/8/2010

Reg. #
621067897

Sitz Rainmaker 6169
Sitz Rainmaker 6536
Sitz Elsiemere 331

Sitz Rainmaker 8987
Sitz Barbamere Jet 3007
Sitz Alliance 6595
Sitz Elsiemere 1909
N Bar Emulation EXT
Ideal 4465 of 6807 4286
S Right Time 205

Sitz JLS Emulation EXT 536P

EPDs										Dam's Prod.		
BW	WW	YW	Milk	SC	IMF	REA	Fat	\$W	\$B	BW	WW	YW
										2-108	2-100	2-104

This good looking Rainmaker son is a deep bodied, soggy bull with plenty of muscle. He gained very well on test with an ADG of 3.82 lbs/day to ratio 115, and earned a 365 day weight of 1250 lbs to ratio 107. His dam is a moderate framed, easy fleshing, neat uddered daughter of Sitz JLS Emulation EXT 536P. She has produced one son that sold in last year's sale to Gordon Johnson in ND.

Lot:

96 Mc Cumber 780 Emblazon 0017

Ind. Record	
BW	82
WW	624
205	647
WR	105
ADG	3.24
YW	1,110
365	1,165
YR	103
IMF	3.31/106
REA	13.6/111
FAT	.22/96

Calved
2/17/2010

Reg. #
16845325

O C C Emblazon 854E
Coleman Emblazon 780
Bohi Lady 1165

D H D Traveler 6807
Dixie Erica of C H 1019
N Bar Emulation EXT
Ideal 4465 of 6807 4286
Sitz Traveler 8180
Boyd Forever Lady 8003
BT New Trend 172K
Miss Wix 705 of Mc Cumber

S A V 8180 Traveler 004
Miss Wix 642 of Mc Cumber
Miss Wix 3003 of Mc Cumber

EPDs										Dam's Prod.		
BW	WW	YW	Milk	SC	IMF	REA	Fat	\$W	\$B	BW	WW	YW
+ .5	+ 44	+ 79	+ 23		+ .14	+ .24	+ .000	28.70	35.65	3-95	3-108	1-103

Recommended for use on heifers- This good bull has excelled at every measure. He earned a WWR of 105, had an ADG 3.59 to ratio 103, and recorded a YWR of 103. In addition to this he scanned very well with an IMF 3.31 to ratio 106, and had a REA of 13.6 to ratio 111. 0017 fits the Emblazon mold with depth, thickness, and moderation. His pathfinder dam is moderate framed, good uddered and a member of the same branch of the Miss Wix family that produced Mc Cumber Foundation 701.

Lot:

97 Mc Cumber 536P EXT 0159

Ind. Record	
BW	97
WW	645
205	658
WR	99
ADG	2.77
YW	1,013
365	1,101
YR	90
IMF	3.66/105
REA	11.2/90
FAT	.29/97

Calved
2/17/2010

Reg. #
16684272

N Bar Emulation EXT
Sitz JLS Emulation EXT 536P
Ideal 4465 of 6807 4286

Sitz JLS Emulation EXT 536P
Rosetta 7174 of Mc Cumber
Rosetta 471 of Mc Cumber

Emulation N Bar 5522
N Bar Primrose 2424
D H D Traveler 6807
E E 4286 of Ideal 2240 1254
N Bar Emulation EXT
Ideal 4465 of 6807 4286
Mc Cumber 7111 Total Value
Rosetta 7106 of Mc Cumber

EPDs										Dam's Prod.		
BW	WW	YW	Milk	SC	IMF	REA	Fat	\$W	\$B	BW	WW	YW
+ 4.1	+ 33	+ 47	+ 25		+ .18	-.05	+ .013	24.14	26.93	2-94	2-95	2-91

0159 is the result of a father-daughter mating and resulted in a masculine, moderate, thick made beef bull. His dam is easy fleshing, near perfect uddered, and sound footed. This cow maker should sire some stout, moderate, low maintenance females that can thrive under harsh conditions.



Sire • Sitz JLS Emulation EXT 536P

Lot:

98 Mc Cumber 780 Emblazon 0016

Ind. Record	
BW	84
WW	582
205	603
WR	98
ADG	3.29
YW	1,075
365	1,129
YR	100
IMF	3.37/108
REA	11.1/91
FAT	.14/61

Calved
2/16/2010

Reg. #
16845324

O C C Emblazon 854E
Coleman Emblazon 780
Bohi Lady 1165

Mc Cumber New Trend 1206
B Pride 6208 of Mc Cumber
B Pride 090 of Mc Cumber

D H D Traveler 6807
Dixie Erica of C H 1019
N Bar Emulation EXT
Ideal 4465 of 6807 4286
A A R New Trend
Miss Wix 705 of Mc Cumber
Mr Wix of Mc Cumber 204
B Pride 7159 of Mc Cumber

EPDs										Dam's Prod.		
BW	WW	YW	Milk	SC	IMF	REA	Fat	\$W	\$B	BW	WW	YW
+ 1.3	+ 37	+ 64	+ 20		+ .15	+ .04	-.018	26.64	21.85	3-94	3-96	1-100

Recommended for use on heifers- This calving ease prospect is deep bodied, thick made, and free moving. He gained well on test with an ADG of 3.62 lbs/day, and has a YWR of 100. He has an excellent IMF of 3.37 to ratio 108. His dam is a daughter of Mc Cumber New Trend 1206 and a member of the B Pride cow family.

Lot:

99 Mc Cumber 536P EXT 0172

Calved 2/23/2010
Reg. # 16684286

N Bar Emulation EXT
Sitz JLS Emulation EXT 536P
Ideal 4465 of 6807 4286

Mc Cumber 004 Traveler 513
Miss Wix 755 of Mc Cumber
Miss Wix 203 of Mc Cumber

Emulation N Bar 5522
N Bar Primrose 2424
D H D Traveler 6807
E E 4286 of Ideal 2240 1254
S A V 8180 Traveler 004
Miss Wix 301 of Mc Cumber
Vermillion Dateline 7078
Miss Wix 5007 of Mc Cumber

Ind. Record	
BW	98
WW	610
205	636
WR	95
ADG	3.51
YW	1,077
365	1,198
YR	98
IMF	4.31/123
REA	13.2/106
FAT	.20/67

EPDs										Dam's Prod.		
BW	WW	YW	Milk	SC	IMF	REA	Fat	\$W	\$B	BW	WW	YW
+4.8	+30	+61	+25		+.20	+.28	+.005	16.28	41.01	2-99	2-97	2-96

0172 is a thick, meaty son of Sitz JLS Emulation EXT 536p. He stands wide, and puts a foot down in all four corners. 0172 gained well and scanned extremely well with an IMF of 4.31 to ratio 123, and a REA of 13.2 to ratio 106. We calved an outstanding 4X13 maternal sister to 0172 this spring and his dam has top ultrasound with an IMF 2@128, and REA 2@111.

Lot:

100 Mc Cumber 536P EXT 0173

Calved 2/23/2010
Reg. # 16684287

N Bar Emulation EXT
Sitz JLS Emulation EXT 536P
Ideal 4465 of 6807 4286

LT Timberwolf 5014
Blackcap 7117 of Mc Cumber
Blackcap 579 of Mc Cumber

Emulation N Bar 5522
N Bar Primrose 2424
D H D Traveler 6807
E E 4286 of Ideal 2240 1254
Wulffs Ext 6106
L T Ethelda 3245
S A V 8180 Traveler 004
Blackcap 3021 of Mc Cumber

Ind. Record	
BW	88
WW	630
205	655
WR	98
ADG	3.38
YW	1,080
365	1,196
YR	98
IMF	5.38/154
REA	11.5/93
FAT	.23/77

EPDs										Dam's Prod.		
BW	WW	YW	Milk	SC	IMF	REA	Fat	\$W	\$B	BW	WW	YW
+2.9	+37	+64	+25		+.38	-.08	-.009	24.67	44.15	2-99	2-102	2-98

0173 is one of the top IMF bulls in the entire sale. He scanned an IMF of 5.38 to ratio 154. In addition, he is a sound structured, deep bodied son of 536P. His dam is a moderate framed, deep bodied daughter of LT Timberwolf 5014.



Missing Link X 536P daughter Rosetta 0155 of Mc Cumber

Lot:

101 Mc Cumber 6536 Rainmakr 0202

Calved 3/23/2010
Reg. # 621067900

Sitz Rainmaker 6169
Sitz Rainmaker 6536
Sitz Elsiemere 331

Sinclair Extra 4X13
Erianna 7169 of Mc Cumber
ERRIANA 5215 of Mc Cumber

Sitz Rainmaker 8987
Sitz Barbamere Jet 3007
Sitz Alliance 6595
Sitz Elsiemere 1909
N Bar Emulation EXT
N Bar Lady Ida S C C 2P37
BT New Trend 172K

Ind. Record	
BW	85
WW	580
205	665
WR	104
ADG	3.46
YW	1,065
365	1,219
YR	100
IMF	/
REA	/
FAT	/

EPDs										Dam's Prod.		
BW	WW	YW	Milk	SC	IMF	REA	Fat	\$W	\$B	BW	WW	YW
										2-99	2-102	2-100

Recommended for use on heifers- 0202 is a commercial bull sired by Rainmaker 6536. He is moderate framed, deep bodied and easy fleshing. He earned a WWR of 104, and had a 365 day weight of 1219 lbs. His dam is a beautiful, moderate framed, neat uddered daughter of 4X13 and is off to a good start with a WWR 2@102, and YWR 2@100.

Lot:

102 Mc Cumber 780 Emblazon 0023

Calved 3/1/2010
Reg. # 16845330

O C C Emblazon 854E
Coleman Emblazon 780
Bohi Lady 1165

Mc Cumber Total Value 449
Gale 690 of Mc Cumber
Gale 439 of Mc Cumber

D H D Traveler 6807
Dixie Erica of C H 1019
N Bar Emulation EXT
Ideal 4465 of 6807 4286
Mc Cumber 7111 Total Value
Miss Wix 7007 of Mc Cumber
S A V 8180 Traveler 004
Gale 244 of Mc Cumber

Ind. Record	
BW	82
WW	562
205	610
WR	99
ADG	3.32
YW	1,060
365	1,141
YR	101
IMF	2.82/90
REA	12.8/105
FAT	.19/83

EPDs										Dam's Prod.		
BW	WW	YW	Milk	SC	IMF	REA	Fat	\$W	\$B	BW	WW	YW
-4	+42	+78	+21		+.03	+.30	+.004	28.15	26.84	2-98	2-103	2-103

Recommended for use on heifers- 0023 is another masculine, deep bodied, wide based son of Coleman Emblazon 780. He had a REA of 12.8 to ratio 105 and gained 3.51 lbs/day on test. His dam is a light birth, productive daughter of Mc Cumber Total Value 449 who is leaving a nice set of daughters here at Mc Cumber. Gale 690 has a BWR 2@98, WWR 2@103, YWR 2@103, and REA 2@100.



Sire • Coleman Emblazon 780

Lot:

103 Mc Cumber 6536 Rainmakr 0194

Calved	Reg. #																																																																																																																																																																																																																																																																																																																																																																																																																																																																																																																																																																																																																																																																																																																																																																																																																																																																																																																																																																																																																																																																																																																																																																																																																																																																																																																																																																																																																			</
--------	--------	--	--	--	--	--	--	--	--	--	--	--	--	--	--	--	--	--	--	--	--	--	--	--	--	--	--	--	--	--	--	--	--	--	--	--	--	--	--	--	--	--	--	--	--	--	--	--	--	--	--	--	--	--	--	--	--	--	--	--	--	--	--	--	--	--	--	--	--	--	--	--	--	--	--	--	--	--	--	--	--	--	--	--	--	--	--	--	--	--	--	--	--	--	--	--	--	--	--	--	--	--	--	--	--	--	--	--	--	--	--	--	--	--	--	--	--	--	--	--	--	--	--	--	--	--	--	--	--	--	--	--	--	--	--	--	--	--	--	--	--	--	--	--	--	--	--	--	--	--	--	--	--	--	--	--	--	--	--	--	--	--	--	--	--	--	--	--	--	--	--	--	--	--	--	--	--	--	--	--	--	--	--	--	--	--	--	--	--	--	--	--	--	--	--	--	--	--	--	--	--	--	--	--	--	--	--	--	--	--	--	--	--	--	--	--	--	--	--	--	--	--	--	--	--	--	--	--	--	--	--	--	--	--	--	--	--	--	--	--	--	--	--	--	--	--	--	--	--	--	--	--	--	--	--	--	--	--	--	--	--	--	--	--	--	--	--	--	--	--	--	--	--	--	--	--	--	--	--	--	--	--	--	--	--	--	--	--	--	--	--	--	--	--	--	--	--	--	--	--	--	--	--	--	--	--	--	--	--	--	--	--	--	--	--	--	--	--	--	--	--	--	--	--	--	--	--	--	--	--	--	--	--	--	--	--	--	--	--	--	--	--	--	--	--	--	--	--	--	--	--	--	--	--	--	--	--	--	--	--	--	--	--	--	--	--	--	--	--	--	--	--	--	--	--	--	--	--	--	--	--	--	--	--	--	--	--	--	--	--	--	--	--	--	--	--	--	--	--	--	--	--	--	--	--	--	--	--	--	--	--	--	--	--	--	--	--	--	--	--	--	--	--	--	--	--	--	--	--	--	--	--	--	--	--	--	--	--	--	--	--	--	--	--	--	--	--	--	--	--	--	--	--	--	--	--	--	--	--	--	--	--	--	--	--	--	--	--	--	--	--	--	--	--	--	--	--	--	--	--	--	--	--	--	--	--	--	--	--	--	--	--	--	--	--	--	--	--	--	--	--	--	--	--	--	--	--	--	--	--	--	--	--	--	--	--	--	--	--	--	--	--	--	--	--	--	--	--	--	--	--	--	--	--	--	--	--	--	--	--	--	--	--	--	--	--	--	--	--	--	--	--	--	--	--	--	--	--	--	--	--	--	--	--	--	--	--	--	--	--	--	--	--	--	--	--	--	--	--	--	--	--	--	--	--	--	--	--	--	--	--	--	--	--	--	--	--	--	--	--	--	--	--	--	--	--	--	--	--	--	--	--	--	--	--	--	--	--	--	--	--	--	--	--	--	--	--	--	--	--	--	--	--	--	--	--	--	--	--	--	--	--	--	--	--	--	--	--	--	--	--	--	--	--	--	--	--	--	--	--	--	--	--	--	--	--	--	--	--	--	--	--	--	--	--	--	--	--	--	--	--	--	--	--	--	--	--	--	--	--	--	--	--	--	--	--	--	--	--	--	--	--	--	--	--	--	--	--	--	--	--	--	--	--	--	--	--	--	--	--	--	--	--	--	--	--	--	--	--	--	--	--	--	--	--	--	--	--	--	--	--	--	--	--	--	--	--	--	--	--	--	--	--	--	--	--	--	--	--	--	--	--	--	--	--	--	--	--	--	--	--	--	--	--	--	--	--	--	--	--	--	--	--	--	--	--	--	--	--	--	--	--	--	--	--	--	--	--	--	--	--	--	--	--	--	--	--	--	--	--	--	--	--	--	--	--	--	--	--	--	--	--	--	--	--	--	--	--	--	--	--	--	--	--	--	--	--	--	--	--	--	--	--	--	--	--	--	--	--	--	--	--	--	--	--	--	--	--	--	--	--	--	--	--	--	--	--	--	--	--	--	--	--	--	--	--	--	--	--	--	--	--	--	--	--	--	--	--	--	--	--	--	--	--	--	--	--	--	--	--	--	--	--	--	--	--	--	--	--	--	--	--	--	--	--	--	--	--	--	--	--	--	--	--	--	--	--	--	--	--	--	--	--	--	--	--	--	--	--	--	--	--	--	--	--	--	--	--	--	--	--	--	--	--	--	--	--	--	--	--	--	--	--	--	--	--	--	--	--	--	--	--	--	--	--	--	--	--	--	--	--	--	--	--	--	--	--	--	--	--	--	--	--	--	--	--	--	--	--	--	--	--	--	--	--	--	--	--	--	--	--	--	--	--	--	--	--	--	--	--	--	--	--	--	--	--	--	--	--	--	--	--	--	--	--	--	--	--	--	--	--	--	--	--	--	--	--	--	--	--	--	--	--	--	--	--	--	--	--	--	--	--	--	--	--	--	--	--	--	--	--	--	--	--	--	--	--	--	--	--	--	--	--	--	--	--	--	--	--	--	--	--	--	--	--	--	--	--	--	--	--	--	--	--	--	--	--	--	--	--	--	--	--	--	--	--	--	--	--	--	--	--	--	--	--	--	--	--	--	--	--	--	--	--	--	--	--	--	--	--	--	--	--	--	--	--	--	--	--	--	--	--	--	--	--	--	--	--	--	--	--	--	--	--	--	--	--	--	--	--	--	--	--	--	--	--	--	--	--	--	--	--	--	--	--	--	--	--	--	--	--	--	--	--	--	--	--	--	--	--	--	--	--	--	--	--	--	--	--	--	--	--	--	--	--	--	--	--	--	--	--	--	--	--	--	--	--	--	--	--	--	--	--	--	--	--	--	--	--	--	--	--	--	--	--	--	--	--	--	--	--	--	--	--	--	--	--	--	--	--	--	--	--	--	--	--	--	--	--	--	--	--	--	--	--	--	--	--	--	--	--	--	--	--	--	--	--	--	--	--	--	--	--	--	--	--	--	--	--	--	--	--	--	--	--	--	--	--	--	--	--	--	--	--	--	--	--	--	--	--	--	--	--	--	--	--	--	--	--	--	--	--	--	--	--	--	--	--	--	--	--	--	--	--	--	--	--	--	--	--	--	--	--	--	--	--	--	--	--	--	--	--	--	----

EPDs										Dam's Prod.		
BW	WW	YW	Milk	SC	IMF	REA	Fat	\$W	\$B	BW	WW	YW
+2.3	+40	+72	+24		+.39	-.14	+.040	25.46	32.33	3-104	3-102	3-97

0194 is a long bodied, smooth fronted bull that earned a 205 day weight of 684 lbs. to ratio 102. He scanned well with an IMF of 4.48 to ratio 128 and combines this with a REA/CWT of 1.20. His dam is a moderate framed, neat uddered daughter of Sinclair Extra 4X13 and was produced from a pathfinder Miss Wix.

Lot:

104 Mc Cumber 6PV3 VALUE 0027

Calved	Reg. #	BW	31
3/20/2010	16845333	WW	536
		205	629
Sinclair Net Present Value	N Bar Prime Time D806	WR	102
Sinclair Added Value 6Pv3	Ideal 4465 of 6807 4286	ADG	3.39
Sinclair M Emulous 4ET1 D47	N Bar Explosion TNT	YW	1,044
	N Bar Miss Emulous B514	365	1,171
	A A R New Trend	YR	104
Mc Cumber New Trend 1206	Miss Wix 705 of Mc Cumber	IMF	3.79
Miss Wix 6136 of Mc Cumber	Vermillion Dateline 7078	REA	10.7
Miss Wix 3028 of Mc Cumber	Miss Wix 702 of Mc Cumber	FAT	.16

EPDs										Dam's Prod.		
BW	WW	YW	Milk	SC	IMF	REA	Fat	\$W	\$B	BW	WW	YW
+3.9	+33	+63	+28	+.53	+.26	+.11	+.023	2.03	31.52	3-103	3-104	3-102

This March 20th son of Sinclair Added Value 6pv3 earned a WWR of 102 and a YWR of 104 within his contemporary group. 0027 tracks wide, moves free, and has extra width and dimension to his rear quarter. His dam is a productive daughter of Mc Cumber New Trend 1206 with a WWR 3@104, and YWR 3@102. This bull would be an outcross for most of our customers.

McCumber
Angus
Ranch

Cow herd known for
outstanding maternal traits

Chuck Tastad Family
RR1 • Box 128
Rolette, ND 58366
Chuck (701) 246-3366
Matt (701) 246-3547

Email: mccumber@utma.com
www.mccumberangus.com
Located 1 mile west, 1/4 south
of Rolette

Lot:

105 Mc Cumber 8101 Traveler 0207

Calved	Reg. #	BW	88
3/27/2010	16684319	WW	564
		205	658
Mc Cumber 004 Traveler 6120	S A V 8180 Traveler 004	WR	99
Mc Cumber 6120 Traveler 8101	Erianna 2206 of Mc Cumber	ADG	3.58
B Pride 2007 of Mc Cumber	BT Traveler 228K	YW	1,065
	Lassie 587 of Mc Cumber	365	1,231
	Vermillion Dateline 7078	YR	101
Mc Cumber 7078 VRD 3108	Lassie 974 of Mc Cumber	IMF	3.17
Miss Wix 7197 of Mc Cumber	Vermillion Dateline 7078	REA	10.2
Miss Wix 2026 of Mc Cumber	Miss Wix 5168 of Mc Cumber	FAT	.18

EPDs										Dam's Prod.		
BW	WW	YW	Milk	SC	IMF	REA	Fat	\$W	\$B	BW	WW	YW
+3.5	+40	+81	+24		+.14	-.01	+.015	19.75	34.18	2-98	2-94	1-101

This young bull had outstanding post weaning performance with an ADG of 3.58 lbs/day to ratio 103, and a 365 day weight of 1231 lbs to ratio 101. 0207 is long bodied, smooth fronted, and thick quartered. His dam is a neat uddered, moderate framed, easy fleshing daughter of Mc Cumber 7078 VRD 3108.



Grand dam • Miss Wix 2026 of Mc Cumber

Lot:

106 Mc Cumber 780 Emblazon 0021

Calved	Reg. #	BW	80
2/22/2010	16845329	WW	572
		205	605
O C C Emblazon 854E	D H D Traveler 6807	WR	98
Coleman Emblazon 780	Dixie Erica of C H 1019	ADG	3.12
Bohi Lady 1165	N Bar Emulation EXT	YW	1,040
	Ideal 4465 of 6807 4286	365	1,104
	Sitz Traveler 8180	YR	98
S A V 8180 Traveler 004	Boyd Forever Lady 8003	IMF	2.92/94
Blackcap 696 of Mc Cumber	Mc Cumber 054 Rito 5009	REA	11.3/93
Blackcap 738 of Mc Cumber	Blackcap 339 of Mc Cumber	FAT	.20/87

EPDs										Dam's Prod.		
BW	WW	YW	Milk	SC	IMF	REA	Fat	\$W	\$B	BW	WW	YW
+7	+44	+75	+20		+.05	+.04	+.011	29.02	23.93	3-92	3-108	3-102

Recommended for use on heifers- 0021 is another Emblazon grandson with extra length. He is a deep bodied, thick made bull with plenty of muscle. His pathfinder dam is a moderate framed, near perfect uddered daughter of 004. She is off to a super start with a production record of BWR 3@92, WWR 3@108, YWR 3@102, and IMF 3@106. She has produced two other sons that have sold to Randy Smith, and Kent Mc Dougall in ND.

Lot:

107Mc Cumber 6536 Rainmakr 0201Calved
3/21/2010Reg. #
16684315Sitz Rainmaker 6169
Sitz Rainmaker 6536
Sitz Elsiemere 331Sitz Rainmaker 8987
Sitz Barbaramere Jet 3007
Sitz Alliance 6595
Sitz Elsiemere 1909
V D A R Lucys Boy
Homestretch Miss Wix 299
Mc Cumber 054 Rito 326
Erianna 278 of Mc CumberCircle Oak Lucys Boy 625
Erianna 825 of Mc Cumber
Erianna 6148 of Mc Cumber**Ind. Record**

BW	83
WW	564
205	611
WR	91
ADG	3.46
YW	1,024
365	1,165
YR	95
IMF	3.05
REA	11.1
FAT	.29

EPDs																Dam's Prod.
BW	WW	YW	Milk	SC	IMF	REA	Fat	\$W	\$B	BW	WW	YW				
+ .3	+ 26	+ 57	+ 22	+ .16	+ .17	-.08	+ .037	21.87	14.48	11 - 94	11 - 95	9 - 96				

Recommended for use on heifers- This is a light birth, calving ease son of Rainmaker, and produced from a 12 year old light birth calving ease daughter of Circle Oak Lucy Boy 625. 0201 is a moderate framed, deep bodied bull with plenty of muscle. His dam has produced sons that have sold to Marvin Walters, Roger Sabbe, Jim Mongeon, Cliff Mattson, Brian Schwan, and Scott and Adam Bryant in ND.

Lot:

108Mc Cumber 780 Emblazon 0020Calved
2/20/2010Reg. #
16845328O C C Emblazon 854E
Coleman Emblazon 780
Bohi Lady 1165D H D Traveler 6807
Dixie Erica of CH 1019
N Bar Emulation EXT
Ideal 4465 of 6807 4286
Mc Cumber 6122 Equator 8113
B Pride 7159 of Mc Cumber
Mr Wix of Mc Cumber 204
Blackcap 306 of Mc CumberMc Cumber 8113 Equator 1190
Blackcap 4120 of Mc Cumber
Blackcap 9128 of Mc Cumber**Ind. Record**

BW	85
WW	645
205	657
WR	107
ADG	2.62
YW	1,038
365	1,076
YR	96
IMF	3.00/96
REA	12.6/103
FAT	.28/122

EPDs																Dam's Prod.
BW	WW	YW	Milk	SC	IMF	REA	Fat	\$W	\$B	BW	WW	YW				
+ 1.5	+ 47	+ 74	+ 19		+ .09	+ .21	+ .011	3.64	23.23	4 - 98	4 - 100	3 - 98				

Recommended for use on heifers- 0020 is a heavy muscled, light birth son of Coleman Emblazon that earned one of the top 205 day weights of his contemporary group to ratio 107. He scanned a REA of 12.6 to ratio 103, and displays extra shape and expression to his top. His dam is an easy fleshing, good uddered daughter of Mc Cumber 8113 Equator 1190 with two sons selling for an average of over \$3600 to Arne Domben, and Sidney Strelow in ND.



Maternal brother • Mc Cumber Valubull 6032



Sire • Sitz Rainmaker 653

Lot:

109Mc Cumber 780 Emblazon 049Calved
1/26/2010Reg. #
16844474O C C Emblazon 854E
Coleman Emblazon 780
Bohi Lady 1165Sinclair Mountaineer 5PU2
Lassie 8224 of Mc Cumber
Lassie 2197 of Mc CumberD H D Traveler 6807
Dixie Erica of CH 1019
N Bar Emulation EXT
Ideal 4465 of 6807 4286
Sinclair MT Time 2P77
Sinclair Heiress 3S54 J483
BT New Trend 172K
Lassie 658 of Mc Cumber**Ind. Record**

BW	65
WW	570
205	592
WR	89
ADG	3.31
YW	1,010
365	1,122
YR	92
IMF	3.71/106
REA	11.9/96
FAT	.18/60

EPDs																Dam's Prod.
BW	WW	YW	Milk	SC	IMF	REA	Fat	\$W	\$B	BW	WW	YW				
-2.2	+ 34	+ 59	+ 17		+ .14	+ .21	-.012	28.64	23.96	1 - 81	1 - 89	1 - 92				

Recommended for use on heifers- This sure shot heifer bull is moderate framed, deep bodied, and sound on his feet and legs. He is one of the lightest birth weight bulls in the offering with an actual birth weight of just 65 lbs. He has a CED EPD of +1.4, and a BW EPD of -2.2. His dam is produced from a pathfinder daughter of BT New Trend 172K, and has neat well attached udder.

Lot:

110Mc Cumber 6536 Rainmakr 0192Calved
3/9/2010Reg. #
16684306Sitz Rainmaker 6169
Sitz Rainmaker 6536
Sitz Elsiemere 331Leachman Right Time
Miss Wix 511 of Mc Cumber
Miss Wix 765 of Mc CumberSitz Rainmaker 8987
Sitz Barbaramere Jet 3007
Sitz Alliance 6595
Sitz Elsiemere 1909
N Bar Emulation EXT
Leachman Erica 0025
V D A R Rito 953
Miss Wix 063 of Mc Cumber**Ind. Record**

BW	83
WW	602
205	613
WR	92
ADG	2.90
YW	988
365	1,077
YR	88
IMF	3.32/95
REA	12.1/98
FAT	.35/117

EPDs																Dam's Prod.
BW	WW	YW	Milk	SC	IMF	REA	Fat	\$W	\$B	BW	WW	YW				
+ .5	+ 35	+ 65	+ 21	+ .04	+ .09	-.03	+ .051	26.18	14.87	4 - 94	4 - 91	4 - 91				

Recommended for use on heifers- 0192 is a moderate, masculine, muscular son of Rainmaker. He has added base width, depth of body, and dimension to his hind quarter. His dam is a high volume, easy keeping daughter of Right Time, and a member of the Miss Wix cow family. If you are serious about keeping cow size in check, and producing cattle to fit a forage environment, 0192 should fit the bill.

Notes



**Sinclair
Extra 4X13
Sons and
Grandsons**



Lot 6



Lot 1



Lot 11



Lot 2



Lot 13



Lot 5



Lot 18

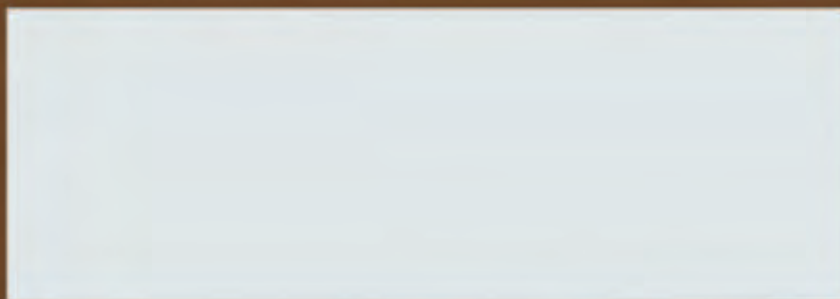


8675 37th Ave., Rolette, ND 58366
Chuck: 701/246-3366
Matt: 701/246-3847
E-mail: mccumber@utma.com
Web site: mccumberangus.com

FIRST CLASS
U.S. POSTAGE

PAID
BILLINGS, MT
PERMIT 294

Dated Material: Please deliver by March 16.



Top Row:
Lots 1 and 2



Bottom Row:
Lots 35 and 62

