

McCumber *Angus* Ranch



Lassie 974 of McCumber — Lot 27

Fall Female Sale

Friday, October 27, 2006
At the farm, Rolette, ND

Welcome



The Tastad family

McCumber
Angus
Ranch 

RR 1, Box 128 • Rolette, ND 58366

Chuck & Gail Tastad

Phone/Fax (701) 246-3366

E-mail: mccumber@utma.com

Matt & Cynthia Tastad

Phone/Fax (701) 246-3847

E-mail: mctastad@utma.com

www.mccumberangus.com

Dear Cattle Producers,

First of all, I would like to welcome you to our 4th Fall Female sale. We have had the female sale every three years since 1997. By having the sale every three years we have been able to offer entire age groups of cows. We will also sell bred heifers and heifer calves from the heart of the herd. These heifers would typically not be offered for sale except for an event like this.

It is an exciting time to be in the beef business, especially the Angus business. The demand for high quality Angus seedstock has never been better, and Angus sired feeder cattle and replacements are topping the markets all across the country. The future of the beef industry looks bright.

Here at McCumber we believe in breeding cattle beyond the numbers. We realize that the numbers are a very important tool, but believe that breeding cattle entails a whole lot more. The cows are expected to calve and raise a calf every year. They must have a functional udder that is easy to nurse, sound feet and legs, a good disposition, and be able to thrive under an array of environmental conditions. If they can't they are culled, not offered for sale, or given another chance. McCumber cows have proven to be adaptable to many environments with cows selling and producing top progeny for their owners from Washington to California, North Dakota to Texas, and New York to Florida.

In an effort to ensure the health of our herd as well as our customer's, we have started testing the cow herd for Johnes. Last year was our first year of testing and the entire herd tested negative.

The sale offering includes all the 1997, 1998, and 1999 model cows that have withstood the test of time. They include females from the Miss Wix, Rosetta, Lassie, B Pride, Gale, and Blackcap cow families. The bred heifers include females from the heart of the replacement pen and represent these same cow families. The elite heifer calves represent the very best of the Miss Wix, Lassie, and B Pride Cow families.

Please consider this your personal invitation to join us on October 27. We hope to see you all there. If you have any questions at all please do not hesitate to call Dad or me.

Sincerely,

Matt and Chuck Tastad

McCumber Angus Ranch Fall Female Sale

Friday - October 27, 2006 - Noon
At the farm, Rolette, ND

SALE DAY PHONES:

(701) 246-3366
(701) 246-3234
(701) 246-3475

AUCTIONEER:

Roger Jacobs (406) 698-7685
Box 270
Shepherd, MT 59079

SALE MANAGER:

American Angus Hall of Fame (816) 532-0811
Tom Burke Kurt Schaff Jeremy Haag
(816) 853-2697 (816) 520-6447 (816) 516-1309

SALE CONSULTANTS:

Jim O'Neill (712) 644-2062, Cell: (402) 680-3171
Casey St. Blanc (985) 789-2110, Home: (985) 796-0607

SPECIAL REPRESENTATIVES:

Vern Frey, *Angus Journal* (701) 537-5383, Cell (701) 721-0344
Terry Robinson, *Farm and Ranch Guide* (701) 255-3037
Kirby Goettsch, *Western Livestock Reporter* (605) 380-3939
Scott Dirk, *Tri-State Neighbor* (605) 335-7300

Buyers unable to attend the sale may send their bids to the Sale Managers, Regional Manager, Field Representatives or Auctioneer.

DIRECTIONS TO THE SALE SITE:

1 mile west and 1/4 mile south of Rolette, North Dakota

LODGING:

Rolette Motel, Rolette ND (701) 246-3733
Sky Dancer Hotel & Casino, Belcourt, ND (701) 244-2400
Econo Lodge, Rugby, ND (701) 776-5776
Hub Motel, Rugby, ND (701) 776-5833
Multiple locations in Minot, ND

HERD HEALTH:

All cattle will be accompanied by proper health certificates for immediate shipment.

SUPPLEMENTAL INFORMATION:

A supplemental sheet will be available sale day with complete and up-to-date information.

TERMS AND CONDITIONS:

Cattle will sell under the Terms and Conditions as recommended by the American Angus Association.

TRUCKING:

Truckers believed to be reliable will be available to assist you in shipping your purchases.

TRANSPORTATION:

Rolette, ND has a 3,500 foot paved runway. Minot, ND is served by Northwest Airlines. Minot is 90 miles from the ranch.

LIVESTOCK MORTALITY INSURANCE:

A representative from Great American Insurance Company will be available to assist you with mortality insurance for your purchases.



Sale book prepared by the Sale Managers, TOM BURKE, KURT SCHAFF, JEREMY HAAG, AMERICAN ANGUS HALL OF FAME, At the WORLD ANGUS HEADQUARTERS, Box 660, Smithville, MO 64089-0660. Phone: (816) 532-0811. Fax: (816) 532-0851. E-mail: angushall@earthlink.net - www.angushall.com

Visit the *Angus Journal* Web site, www.angusjournal.com, and view this sale book online.

COMMENTS FROM THE SALE MANAGER:

FEATURING THE FAMOUS McCUMBER COW FAMILIES



Tom Burke
(816) 853-2697



Kurt Schaff
(816) 520-6447



Jeremy Haag
(816) 516-1309

The McCumber prefix is synonymous with maternal excellence in the Angus breed. Chuck and Matt Tastad have followed a disciplined program of breeding for a balance of maternal and performance genetics for generations. With this focus on maternal excellence, McCumber females are noted for their outstanding productivity and have become important components in the Angus breed.

This outstanding offering of Angus females features an outstanding group of proven cows along with an impressive group of bred heifers and a very select group of heifer calves that are sure to please. It is our pleasure and privilege to work with the Tastad family in the presentation of this super sale offering. Please don't hesitate to call on us at American Angus Hall of Fame, if we can be of assistance in any way. We are here to serve.

Sincerely,

Tom Burke

Kurt Schaff

Jeremy Haag

McCumber Reference Sire



Sinclair Extra 4X13 — Reference Sire A.



SINCLAIR EXTRA 4X13

Birth Date: 2-7-2004

Bull 14774030

Tattoo: 4X13

#Emulation N Bar 5522
N Bar Emulation EXT
#10776479 N Bar Primrose 2424

#Emulation 31 (FX)
Ankony 8F78 Lass 8F275
#Emulation 31 (FX)
Primrose N Bar 9962

#N Bar Prime Time D806
N Bar Lady Ida SCC 2P37
14347672 N Bar Lady Ida F1080

#Gardens Prime Time
N Bar Miss Emulous A404
N Bar Shadow X4124
N Bar Lady Ida D1986

CW	1+13
MARB	1+18
REA	1+15
FAT	1+037
IMF	+43
UREA	+21
UFAT	+040

FOR REFERENCE ONLY.

Owned with Sinclair Cattle Co.,

N Bar Land & Cattle Company and Genex/CRI.

The McCumber featured herd sire enrolled in the Genex/CRI AI Stud was selected as the \$37,500 top-selling bull of the 2005 Sinclair Sale in Wyoming.

BEPD	WEPD	YEPD	MILK
+7	.37	+39	.30
		+76	.27
			+21
			.25

This promising young sire is by the established Pathfinder Sire N Bar Emulation EXT who is the most widely used sire in the history of the Angus breed, backed by generations of N Bar breeding from a dam by the proven calving-ease and high marbling Pathfinder Sire N Bar Prime Time D806.

This bull earned an individual IMF ratio of 151 while balancing a modest individual birth ratio of 95 with an individual weaning ratio of 108 and an individual yearling ratio of 109 to rank in the top five percent among non-parent bulls for IMF EPD with a Birth Weight EPD in the lowest 20 percent.

The dam of this bull combines a progeny birth ratio of 96 with progeny weaning and yearling ratios of 108 and 105 respectively along with progeny IMF and ultrasound ribeye ratios of 125 and 101 respectively on her first two calves.

Featuring his valuable service and exciting first progeny.



N Bar Emulation EXT — The sire of Reference Sires A and B.



N Bar Lady Ida X2912 — From the same family as Reference Sire A.

McCumber Reference Sire



Ideal 4465 Of 6807 4286 - The \$110,000 valued dam of Reference Sire B.



Sitz JLS EMULATION EXT 536P

Birth Date: 8-16-2004

Bull +14809623

Tattoo: 536P

#Emulation N Bar 5522
N Bar Emulation EXT
#10776479 N Bar Primrose 2424

#Emulation 31 (FX)
Ankony 8F78 Lass 8F275
#Emulation 31 (FX)
Primrose N Bar 9962

#DHD Traveler 6807
Ideal 4465 of 6807 4286
#12211413 EE 4286 of Ideal 2240 1254

#QAS Traveler 23-4
#Bemindful Maid DHD 0807
EE 30 1254 of Ideal 5254 960
EE 30 2240 of Ideal 8245 960

CW	REA	FAT	IMF	UREA	UFAT	MILK
+1.11	+1.15	+1.007	+1.10	+1.15	+1.016	

FOR REFERENCE ONLY.

Owned with Sitz Angus Ranch.

A full brother to the new ABS Global Sire Sinclair Excellency 5X25 who sold one-third interest for \$37,000 to top the 2006 Sinclair Bull Sale from the mating of the established Pathfinder Sire N Bar Emulation EXT to the \$110,000 valued Ideal 4465 of 6807 4286 who is the cornerstone of the top feed efficiency family identified in the Jorgenson performance program.

A flush sister was the \$51,000 top-selling female of the 2006 Sitz Female Sale and another was the \$59,000 top-selling full interest heifer of the 2006 Bohi Sale.

Sinclair Lady 2P61 4465, a maternal sister, sold to Whitestone Farm as the \$110,000 top-selling full interest cow of the Sterling Hunter Dispersal where she generated \$100,000 in progeny sales with her dam selling one-half interest for \$55,000 for a \$110,000 valuation as an aged donor.

Another maternal sister sold one-half interest for \$90,000 as the top-valued heifer of the 2006 Three Trees Sale and others highlighted the 2006 SandPoint Sale while maternal brothers include the ABS Global sires Ideal 7451 of 8103 4465 and Sinclair Net Present Value.



Sinclair Lady 2P61 4465 - The \$110,000 maternal sister to Reference Sire B.

Ideal 1418 Of 8103 4286 - This maternal brother to the dam of Reference Sire B is a proven Pathfinder Sire who served as a longtime member of the ABS Global AI Stud.



Ideal 7451 Of 8103 4465 - This maternal brother to Reference Sire B is the proven ABS Global Sire who was the first of two consecutive Jorgenson feed efficiency winners.

Sinclair Net Present Value

- This maternal brother to Reference Sire B is a featured calving-ease sire in the Accelerated Genetics AI Stud.



Sinclair Excellency 5X25

- This full brother to Reference Sire B is the new ABS Global Sire who sold one-third interest for \$37,000 to top the 2006 Sinclair Bull Sale.

Sinclair Open Range 2Q23

- This bull from the same family as Reference Sire B is the ABS Global Sire who sold one-fourth semen interest for \$20,000 to top the 2004 Sinclair Pennsylvania Sale.



Miss Wix of McCumber



MISS WIX 365 OF MCCUMBER



MISS WIX 204 OF MCCUMBER



MISS WIX 303 OF MCCUMBER



HOMESTRETCH MISS WIX 301

HOMESTRETCH MISS WIX 663



MISS WIX 098 OF MCCUMBER



MISS WIX 903 OF MCCUMBER



MR WIX OF MCCUMBER 204



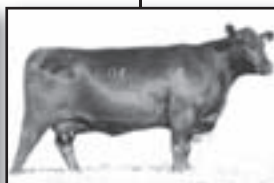
HBR OMAHA CLINT



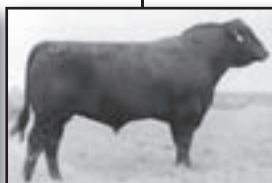
OAK HILL MISS WIX 9402



MISS WIX 352 OF MCCUMBER



VDAR MISS WIX 606



VDAR NEW TREND 700



VDAR RITO 953



VDAR NEW TREND 933

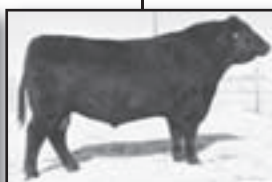
MISS WIX 9007 OF MCCUMBER



MISS WIX 5014 OF MCCUMBER



MISS WIX 5018 OF MCCUMBER



VDAR NEW TREND 47



MISS WIX 6001 OF MCCUMBER



MISS WIX 6002 OF MCCUMBER

Family Tree



**HOMESTRETCH MISS
WIX 299**



**MCCUMBER EQUATOR
6122**



**MISS WIX 7111 OF
MCCUMBER**



**MISS WIX 205 OF
MCCUMBER**



**MCCUMBER CLASSIC
202**



**MCCUMBER 124
TRAVELER 212**



**MISS WIX 5007 OF
MCCUMBER**



**MISS WIX 9148 OF
MCCUMBER**



**MISS WIX 2022 HC
MCCUMBER**



**MCCUMBER 7111
TOTAL VALUE**



MISS WIX 235 OF MCCUMBER

**MISS WIX
756 OF
MCCUMBER**



MISS WIX 918 OF MCCUMBER



**MCCUMBER
FOUNDATION 701**



**MISS WIX 702 OF
MCCUMBER**



**MISS WIX 705 OF
MCCUMBER**



**MISS WIX 9026 OF
MCCUMBER**



**MCCUMBER TOTAL
VALUE 449**

**MISS WIX 030
OF MCCUMBER**

Miss Wix of McCumber Choice



Miss Wix 6001 of McCumber — Lot 1A



Oak Hill Miss Wix 9402 — The dam of Lots 1A and 1B.



Miss Wix 6001 of McCumber

Birth Date: 2-13-2006

Cow +15428709

Tattoo: 6001

SAV 8180 Traveler 004
13512009 +Boyd Forever Lady 8003

#GDAR Traveler 71
Sitz Everelda Entense 1137
#AAR New Trend
SVF Forever Lady 57D

#N Bar Emulation EXT
Oak Hill Miss Wix 9402
13552550 +Homestretch Miss Wix 663

#Emulation N Bar 5522
N Bar Primrose 2424
#+GDAR Royce 131
+Homestretch Miss Wix 301

CW	
111	
MARB	IMF
1.09	1.08
REA	UREA
1.17	1.28
FAT	UFAT
1.026	1.013

SELLING BUYER'S CHOICE OF LOTS 1A OR 1B.

BEPD	WEPD	YEPD	MILK
1+2.8	.05 1+51	.05 1+93	.05 1+26

A very special opportunity to select among fifth generation descendants of the legendary Pathfinder Dam Miss Wix 365 of McCumber by the record-setting Genex/CRI Sire SAV 8180 Traveler 004.

The productive and impressive dam of this heifer has a progeny weaning ratio of 110 and a progeny yearling ratio of 106 on three natural calves by the established Pathfinder Sire N Bar Emulation EXT.

This heifer descends from a third dam who is a full sister to the famous herd sire producer Miss Wix 903 of McCumber from the mating of the legendary high maternal Pathfinder Sire Rito 054 GDAR to the legendary Pathfinder Dam Miss Wix 365 of McCumber.



Miss Wix 365 of McCumber

Featuring the influence of this legendary third generation Pathfinder Dam who is the modern day cornerstone of a large portion of the McCumber performance Angus herd and a major contributor in Angus bloodlines around the world.

This famous female born 23 years ago in 1983 earned a progeny weaning ratio of 106 on ten natural calves and a progeny yearling ratio of 108 on seven head, generating an impressive network of descendants to leave a lasting impact on the Angus breed.

Miss Wix of McCumber Choice



Miss Wix 6002 Of McCumber — Lot 1B



Oak Hill Miss Wix 9402 — The dam of Lots 1A and 1B.



Miss Wix 6002 of Mc CUMBER

Birth Date: 2-14-2006

Cow +15428710

Tattoo: 6002

SAV 8180 Traveler 004
13512009 +Boyd Forever Lady 8003

#GDAR Traveler 71
Sitz Everelda Entense 1137
#AAR New Trend
SVF Forever Lady 57D

#N Bar Emulation EXT
Oak Hill Miss Wix 9402
13552550 +Homestretch Miss Wix 663

#Emulation N Bar 5522
N Bar Primrose 2424
#+GDAR Royce 131
+Homestretch Miss Wix 301

CW	
111	
MARB	IMF
1.09	1.08
REA	UREA
1.17	1.28
FAT	UFAT
1.026	1.013

SELLING BUYER'S CHOICE OF LOTS 1A OR 1B.

BEPD	WEPD	YEPD	MILK
1+2.8	.05	1+51	.05
1+93	.05	1+26	.05

This popular and impressive female from the Miss Wix family features a royal tabulation which also includes the time-tested Forever Lady, Everelda Entense, Primrose and Rachel families.

This daughter of the popular and proven Genex/CRI Sire SAV 8180 Traveler 004 was produced from an outstanding daughter of the

Pathfinder Sire N Bar Emulation EXT with a progeny weaning ratio of 110 and a progeny yearling ratio of 106 on three natural calves. The granddam of this heifer is a granddaughter of the famous Pathfinder Sires Traveler 124 GDAR and Rito 054 GDAR.

The third dam of this heifer is a full sister to Miss Wix 903 of McCumber who produced the famous sires VDAR New Trend 700, VDAR New Trend 933 and VDAR New Trend 953, and her full sister produced HBR Omaha Clint.



SAV 8180 TRAVELER 004

Birth Date: 1-1-2000

Bull 13512009

Tattoo: 004

Sitz Traveler 8180
#11367940 Sitz Everelda Entense 1137

#Traveler 1148 GDAR
GDAR Miss Blackcap 567
#GDAR Rainmaker 340
Sitz Everelda Entense 2335

#AAR New Trend
Boyd Forever Lady 8003
+13050778 SVF Forever Lady 57D

#VDAR Shoshone 548
Donna AAR 74
#+Leachman Right Time
+SVF Forever Lady 1128

CW	
5	
MARB	IMF
1.18	1.08
REA	UREA
1.14	1.41
FAT	UFAT
1.025	1.012

FOR REFERENCE ONLY.

Featuring the progeny and service of this record-setting Genex/CRI Sire who ranks in the top two percent among current sires for both Weaning Weight EPD and Yearling Weight EPD while ranking in the top ten percent for both Milk EPD and Scrotal EPD with an Ultrasound Ribeye Area EPD in the top 15 percent. This proven sire is known for his ability to consistently transmit added thickness, fleshing ease and overall quality, and he sired the world record-selling sire group.

Featuring a solid performance and maternal trait tabulation, this outstanding sire is a grandson of the famous herd sire producers SVF Forever Lady 57D and Sitz Everelda Entense 1137 from the mating of Sitz Traveler 8180 to the \$90,000 Boyd Forever Lady 8003.

BEPD	WEPD	YEPD	MILK
+3.3	.95	+61	.95
+109	.93	+27	.59



SAV 8180 Traveler 004 — Reference Sire C.

Miss Wix 6151 of McCumber



Miss Wix 6151 Of McCumber — Lot 2



*McCumber 7111 Total Value 209 —
Maternal brother to Lot 2.*



Miss Wix 6151 of Mc CUMBER

Birth Date: 2-19-2006

Cow +15428768

Tattoo: 6151

#N Bar Emulation EXT
Leachman Right Time
#+11750711 Leachman Erica 0025

#Emulation N Bar 5522
N Bar Primrose 2424
#Tehama Bando 155
Leachman Erica 8058

#GDAR Traveler 71
Miss Wix 7111 of McCumber
+12828746 #Miss Wix 365 of McCumber

#Traveler 1148 GDAR
GDAR Miss Blackcap 567
#Shoshone 247 PJM
#Miss Wix 294 of McCumber

CW	145
MARB	1+02
REA	1-03
FAT	1+020
IMF	1+11
UREA	1+19
UFAT	1+036

A sale attraction from the Miss Wix family by the \$160,000

BEFD	WEFD	YEPD	MILK
1+1.7	.05	1+36	.05
1+64	.05	1+26	.05

Pathfinder Sire Leachman Right Time from the highly regarded Miss Wix 7111 of McCumber who combines a progeny birth ratio of 97 with a progeny weaning ratio of 107 and a progeny yearling ratio of 106 on three natural calves while recording a progeny IMF ratio of 102 and a progeny ultrasound ribeye ratio of 104 on 15 head to carry on the productive tradition of the Miss Wix family descending from the legendary third generation Pathfinder Dam Miss Wix 365 of McCumber.



Miss Wix 7111 Of McCumber — The dam of Lot 2.

Miss Wix 2022 HC McCumber, a full sister, balances a progeny birth ratio of 91 with a progeny weaning ratio of 109 and a progeny yearling ratio of 105 on her first two calves after earning individual IMF and ultrasound ribeye ratios of 111 and 106 respectively, and she is acclaimed by many to be one of the great young cows in the Angus breed.

Another full sister was the \$15,000 top-selling female of the 2003 McCumber Female Sale as a bred heifer to Fortune's Rafter U Cross Ranch in South Dakota where she has become a featured embryo donor.

McCumber 7111 Total Value, a maternal brother, sold two-thirds interest for \$13,500 to Marcy Cattle Company of Nebraska and Redland Angus of Wyoming as the second top-selling bull of the 2003 McCumber Bull Sale and he has also been used successfully in the McCumber breeding program.



Miss Wix 2022 HC McCumber — Full sister to Lot 2.

Miss Wix of McCumber Choice

An opportunity to select among two flush sisters that blend the established high maternal genetics of the Miss Wix family with the high-performance and added muscle of the Pathfinder Sire known as VRD.

This heifer has an individual IMF ratio of 105 from a donor dam who combines a progeny birth ratio of 98 with a progeny weaning ratio of 104 on three natural calves.

The dam of this heifer is a full sister to the \$39,000 McCumber Classic 202 and his flush sister who was the second top-selling bred heifer of the 2003 McCumber Female Sale.



McCumber Classic 202 - The \$39,000 full brother to the dam of Lots 3A and 3B.



Miss Wix 5014 Of McCumber - Lot 3A

3A Miss Wix 5014 of Mc CUMBER

Birth Date: 3-6-2005

Cow +15050766

Tattoo: 5014

#Connealy Dateline
Vermilion Dateline 7078
#12810693

#DHD Traveler 6807
#Eila Eila of Conanga
#+Leachman Right Time
Vermilion Blackbird 3525

#Tehama Bando 155
Miss Wix 9007 of Mc Cumber
+13365332

#Band 234 of Ideal 3163
Tehama Blackcap G373
#Shoshone 247 PJM
#Miss Wix 294 of Mc Cumber

CW	
I+6	
MARB	IMF
I+.02	+.01
REA	UREA
I+.09	+.22
FAT	UFAT
I+.002	-.011

SELLING BUYER'S CHOICE OF
LOTS 3A OR 3B.

Bred to calve February 3, 2007 to SINCLAIR EXTRA 4X13 and exposed to him after April 29, 2006.

BEPD	WEPD	YEPD	MILK
I+4.2	.05	I+46	.05
I+84	.05	I+24	.05

3B Miss Wix 5018 of Mc CUMBER

Birth Date: 3-9-2005

Cow +15050770

Tattoo: 5018

#Connealy Dateline
Vermilion Dateline 7078
#12810693

#DHD Traveler 6807
#Eila Eila of Conanga
#+Leachman Right Time
Vermilion Blackbird 3525

#Tehama Bando 155
Miss Wix 9007 of Mc Cumber
+13365332

#Band 234 of Ideal 3163
Tehama Blackcap G373
#Shoshone 247 PJM
#Miss Wix 294 of Mc Cumber

CW	
I+6	
MARB	IMF
I+.02	-.01
REA	UREA
I+.09	+.47
FAT	UFAT
I+.002	-.014

SELLING BUYER'S CHOICE OF
LOTS 3A OR 3B.

Bred to calve February 2, 2007 to SINCLAIR EXTRA 4X13 and exposed to him after April 29, 2006.

BEPD	WEPD	YEPD	MILK
I+4.2	.05	I+46	.05
I+84	.05	I+24	.05

This Miss Wix heifer by the high-performance sire known as VRD earned an impressive individual ultrasound ribeye ratio of 118 to rank in the top 15 percent among non-parent females for Ultrasound Ribeye Area EPD.

The dam of this heifer has a progeny birth ratio of 98 combined with a progeny weaning ratio of 104 on three natural calves and she is a full sister to the \$39,000 McCumber Classic 202 descending from the famous Pathfinder Dam Miss Wix 365 of McCumber.

A maternal sister has a progeny weaning ratio of 110 on her first two calves.



Miss Wix 205 Of McCumber - Full sister to the dam of Lots 3A and 3B.



Miss Wix 5018 Of McCumber - Lot 3B

Miss Wix of Mc Cumber



Miss Wix 098 of Mc Cumber - The fourth generation Pathfinder Dam from which Lots 4A through 7 descend.

4A Miss Wix 5103 of Mc Cumber

Birth Date: 2-8-2005	Cow 15050786	Tattoo: 5103
#Tehama Bando 155	#Band 234 of Ideal 3163	
MC Cumber Classic 202	Tehama Blackcap G373	
+14208279	#Shoshone 247 PJM	
	#Miss Wix 294 of Mc Cumber	
Mc Cumber Ferdinand 896	#RR Ferdinand 758D	
Miss Wix 1119 of Mc Cumber	#Miss Wix 554 of Mc Cumber	
13913233	#Miss Wix 8002 of Mc Cumber	
	#Miss Wix 365 of Mc Cumber	
	#Miss Wix 098 of Mc Cumber	
		IMF
		-.07
		UREA
		+.30
		UFAT
		-.041

The first of two twin sisters who are triple-bred to the legendary Pathfinder Dam Miss Wix 365 of Mc Cumber sired by the \$39,000 Mc Cumber Classic 202.

This female earned individual weaning and yearling ratios of 107 and 106 respectively coupled with individual IMF and ultrasound ribeye ratios of 101 and 111 respectively.

The grandam of this heifer is a rare fifth generation Pathfinder Dam. Bred to calve February 11, 2007 to SINCLAIR EXTRA 4X13 and exposed to him after April 29, 2006.

4B Miss Wix 5104 of Mc Cumber

Birth Date: 2-8-2005	Cow 15050787	Tattoo: 5104
#Tehama Bando 155	#Band 234 of Ideal 3163	
MC Cumber Classic 202	Tehama Blackcap G373	
+14208279	#Shoshone 247 PJM	
	#Miss Wix 294 of Mc Cumber	
Mc Cumber Ferdinand 896	#RR Ferdinand 758D	
Miss Wix 1119 of Mc Cumber	#Miss Wix 554 of Mc Cumber	
13913233	#Miss Wix 8002 of Mc Cumber	
	#Miss Wix 365 of Mc Cumber	
	#Miss Wix 098 of Mc Cumber	
		IMF
		-.10
		UREA
		-.05
		UFAT
		-.039

This triple-bred Miss Wix female by the \$39,000 Mc Cumber Classic 202 stems from a grandam who is a rare fifth generation Pathfinder Dam featured in this sale as Lot 5.

A maternal sister recorded a progeny weaning ratio of 112 on her first calf, Mc Cumber 004 Traveler 513, who was the \$12,000 top-selling bull of the 2006 Mc Cumber Bull Sale.

Bred to calve January 18, 2007 to SINCLAIR EXTRA 4X13 and exposed to him after April 29, 2006.



Mc Cumber 004 Traveler 513 - Reference Sire D.

5 Miss Wix 8002 of Mc Cumber

Birth Date: 2-16-1998	Cow #+13121253	Tattoo: 8002
#Traveler 124 GDAR	#QAS Traveler 23-4	
GDAR Royce 131	Rachel Rito 813 GDAR	
#+11605039	#Rito 2100 GDAR	
	#Lady Forever 1100 GDAR	
054 PJM 1438	#Rito 054 GDAR	
Miss Wix 098 of Mc Cumber	PJM Montana Power 196	
#11468226	#Shoshone 247 PJM	
	#Miss Wix 294 of Mc Cumber	
		IMF
		-.16
		UREA
		+.19
		UFAT
		-.006

PATHFINDER DAM.
A rare fifth generation Pathfinder

Dam with an impressive progeny weaning ratio of 106 on six calves from a famous fourth generation Pathfinder Dam with a progeny weaning ratio of 106 on six calves and a progeny yearling ratio of 106 on five head, tracing to the legendary Pathfinder Dam Miss Wix 365 of Mc Cumber.

A daughter produced Lots 4A and 4B as well as the dam of the \$12,000 top-selling bull of the 2006 Mc Cumber Bull Sale.

Bred to calve January 28, 2007 to SINCLAIR EXTRA 4X13. Exposed to SITZ JLS EMULATION EXT 536P after May 12, 2006.

6 Miss Wix 5194 of Mc Cumber

Birth Date: 3-21-2005	Cow 15170621	Tattoo: 5194
#AAR New Trend	#VDAR Shoshone 548	
BT New Trend 172K	Donna AAR 74	
+13629635	#Leachman Right Time	
	Sitz Everelda Entense 1905	
#+GDAR Royce 131	#Traveler 124 GDAR	
Miss Wix 1005 of Mc Cumber	GDAR Rachel 5115	
+14001346	054 PJM 1438	
	#Miss Wix 365 of Mc Cumber	
		IMF
		+.06
		UREA
		+.18
		UFAT
		-.013

This granddaughter of the fifth generation Pathfinder Dam who sells as Lot 5 is backed by generations of elite maternal genetics by the Mc Cumber herd sire BT New Trend 172K.

This female has an individual IMF ratio of 105 from a dam with a progeny IMF ratio of 112 on three head.

Bred to calve February 21, 2007 to SINCLAIR EXTRA 4X13 and exposed to him from April 29, 2006 to June 1, 2006. Exposed to LT TIMBERWOLF 5014 after June 1, 2006.

7 Miss Wix 573 of Mc Cumber

Birth Date: 2-1-2005	Cow 15050927	Tattoo: 573
#Vernilion Dateline 7078	#Connealy Dateline	
MC Cumber 7078 VRD 3116	#Vernilion Blackbird 5044	
14443308	Gale 836 of Mc Cumber	
	#Circle Oak Lucys Boy 625	
	Gale 6129 of Mc Cumber	
#QAS Traveler 23-4	#Band 234 of Ideal 3163	
Miss Wix 1009 of Mc Cumber	QAS Blackbird Eve 601 1	
#+14001347	#KMA Highroller 5025	
	#Miss Wix 098 of Mc Cumber	
		IMF
		+.11
		UREA
		+.11
		UFAT
		+.031

This Miss Wix bred heifer balances an individual birth ratio of 95 with

an individual weaning ratio of 105 in the performance program at Mc Cumber Angus Ranch from a rare sixth generation Pathfinder Dam who balances a progeny birth ratio of 95 with progeny weaning and yearling ratios of 105 and 102 respectively along with a progeny ultrasound ribeye ratio of 103 on three head.

The dam of this female is backed by the proven genetics of the Pathfinder Sires QAS Traveler 23-4 and KMA Highroller 5025.

Bred to calve February 2, 2007 to SINCLAIR EXTRA 4X13 and exposed to him after April 29, 2006.

D MC Cumber 004 TRAVELER 513

Birth Date: 1-18-2005	Bull 15050814	Tattoo: 513
#Sitz Traveler 8180	#GDAR Traveler 71	
SAV 8180 Traveler 004	Sitz Everelda Entense 1137	
13512009	#AAR New Trend	
	SVF Forever Lady 57D	
#+Leachman Right Time	#N Bar Emulation EXT	
Miss Wix 301 of Mc Cumber	Leachman Erica 0025	
14443296	Mc Cumber Ferdinand 896	
	#Miss Wix 8002 of Mc Cumber	
		CW
		1+.6
		MARB
		1+.07
		IMF
		-.13
		REA
		UREA
		1+.10
		+.55
		FAT
		1+.019
		+.017

FOR REFERENCE ONLY.
The top-selling bull of the 2006

Mc Cumber Sale who sold two-thirds interest for \$12,000 to Larry Wunderlich of Texas.

This son of the record-setting Genex/CRI Sire SAV 8180 Traveler 004 earned individual weaning and yearling ratios of 112 coupled with an individual ultrasound ribeye ratio of 118 as the first calf from a two-year-old dam by the Pathfinder Sire Leachman Right Time, earning this bull a Weaning Weight EPD which ranks in the top one percent among non-parent bulls along with a Yearling Weight EPD in the top two percent and an Ultrasound Ribeye Area EPD in the top ten percent.

The Pathfinder third dam of this bull sells as Lot 5.

Miss Wix of McCumber Family



Miss Wix 9026 of McCumber — Lot 8



*Miss Wix 235 of McCumber —
The productive and famous dam of
Lots 8 and 10.*

8

Miss Wix 9026 of Mc CUMBER

Birth Date: 3-14-1999

Cow +13365349

Tattoo: 9026

#Traveler 124 GDAR
#QAS Traveler 23-4
Mc Cumber 124 Traveler 212 Rachel Rito 813 GDAR
#+11824721 #Miss Wix 365 of Mc Cumber #Shoshone 247 PJM
#Miss Wix 294 of Mc Cumber

#Shoshone Viking GD60 (GDF) #Franchester of Wye
Miss Wix 235 of Mc Cumber Shoshone Wendy D60
10254423 #Miss Wix 117 of Mc Cumber #Candolier Forever 376
Miss Wix 455 of Mc Cumber

CW
1-5
MARB
1-12
REA
1-07
FAT
1-012
IMF
+04
UREA
-02
UFAT
+027

This proven producer is a full sister to McCumber Foundation 701, one of the top-producing sires ever identified in the history of McCumber Angus Ranch.

This female blends two great branches of the Miss Wix family combining the influence of the legendary females Miss Wix 235 of McCumber and Miss Wix 365 of McCumber by the high maternal Pathfinder Sire McCumber 124 Traveler 212.

BEPD	WEPD	YEPD	MILK
+3.6	.32	+22	.31
+38	.30	+22	.15

9

Miss Wix 526 of Mc CUMBER

Birth Date: 1-22-2005

Cow 15050882

Tattoo: 526

#Sitz Traveler 8180
SAV 8180 Traveler 004
13512009 +Boyd Forever Lady 8003

#GDAR Traveler 71
Sitz Everelda Entense 1137
#AAR New Trend
SVF Forever Lady 57D

+BT New Trend 172K
Miss Wix 3003 of Mc Cumber
+14505016 +Miss Wix 705 of Mc Cumber

#AAR New Trend
+BT Everelda Entense 57D
#+Mc Cumber 124 Traveler 212
Miss Wix 235 of Mc Cumber

IMF
+09
UREA
-09
UFAT
-013

This Miss Wix heifer by the recording setting Genex/CRI Sire SAV 8180 Traveler 004 has an individual weaning ratio of 105 as the first calf from a two-year-old dam.

The grandam served as a second generation Miss Wix of McCumber embryo donor and she is a full sister to McCumber Foundation 701 and Lots 8 and 9.

Bred to calve February 13, 2007 to SINCLAIR EXTRA 4X13 and exposed to him from April 29, 2006 to June 1, 2006. Exposed to LT TIMBERWOLF 5014 after June 1, 2006.

BEPD	WEPD	YEPD	MILK
+5.3	.32	+43	.23
+68	.20	+28	.17



Miss Wix 705 of McCumber - Full sister to Lots 8 and 10.

Miss Wix 702 of McCumber



Miss Wix 702 Of McCumber — Lot 10

10

Miss Wix 702 of Mc CUMBER

Birth Date: 1-15-1997

Cow +12829264

Tattoo: 702

#Traveler 124 GDAR
Mc Cumber 124 Traveler 212
#+11824721

#QAS Traveler 23-4
Rachel Rito 813 GDAR
#Shoshone 247 PJM
#Miss Wix 294 of Mc Cumber

#Shoshone Viking GD60 (GDF)
Miss Wix 235 of Mc Cumber
10254423

#Franchester of Wye
Shoshone Wendy D60
#Candolier Forever 376
Miss Wix 455 of Mc Cumber

CW	
1-5	
MARB	IMF
1-12	+05
REA	UREA
1-07	-27
FAT	UFAT
1-012	+021

This productive second generation Miss Wix of McCumber embryo donor has a progeny weaning ratio of 107 on five natural calves and a progeny yearling ratio of 109 on two head from a famous donor dam recording a progeny weaning ratio of 104 on ten natural calves and a progeny yearling ratio of 104 on three head.

This proven producer is a member of the same embryo flush as the

BEPD	WEPD	YEPD	MILK
+4.4	.35	+27	.34
+49	.24	+27	.18

*Miss Wix 235 Of McCumber —
The productive and famous dam of
Lots 8 and 10.*

famous sire McCumber Foundation 701 and the famous Miss Wix of McCumber 705 with another full sister featured in this sale as Lot 9. This daughter of the high maternal Pathfinder Sire McCumber 124 Traveler 212 blends the two great branches of the Miss Wix family through Miss Wix 235 of McCumber and Miss Wix 365 of McCumber, stemming from grandams who are both Pathfinder Dams. An impressive array of progeny from this cow have highlighted past McCumber sales.

Bred to calve January 31, 2007 to SITZ JLS EMULATION EXT 536P and exposed to him from May 12, 2006 to June 1, 2006. Exposed to SINCLAIR EXTRA 4X13 after June 1, 2006.



*McCumber 124 Traveler 212 - The Pathfinder Sire of
Lots 8 and 10*



McCumber Foundation 701 - Full brother to Lots 8 and 10.

Miss Wix of McCumber Choice

A royal blending of maternal genetics from the Miss Wix family by the record-setting Genex/CRI Sire SAV 8180 Traveler 004.

The donor dam of this female has a progeny weaning ratio of 107 on five natural calves and a progeny yearling ratio of 109 on two head blending the two great branches of the family tracing through Miss Wix 235 of McCumber and Miss Wix 365 of McCumber.



SAV 8180 Traveler 004 - The sire of Lots 10A and 10B.



Miss Wix 5016 Of McCumber - Lot 10A

10A Miss Wix 5016 of Mc CUMBER

Birth Date: 3-7-2005

Cow +15050768

Tattoo: 5016

#Sitz Traveler 8180
SAV 8180 Traveler 004
13512009 +Boyd Forever Lady 8003

#GDAR Traveler 71
Sitz Everelda Entense 1137
#AAR New Trend
SVF Forever Lady 57D

#+Mc Cumber 124 Traveler 212
Miss Wix 702 of Mc Cumber
+12829264 Miss Wix 235 of Mc Cumber

#Traveler 124 GDAR
#Miss Wix 365 of Mc Cumber
#Shoshone Viking GD60 (GDF)
#Miss Wix 117 of Mc Cumber

CW	I+1
MARB	IMF
I+14	-03
REA	UREA
I+12	-03
FAT	UFAT
I+007	+009

SELLING BUYER'S CHOICE OF
LOTS 10A OR 10B.

Bred to calve January 19, 2007 to SINCLAIR EXTRA 4X13 and exposed to him after April 29, 2006.

BEPD	WEPD	YEPD	MILK
I+3.9	.05	I+44	.05
I+79	.05	I+27	.05

10B Miss Wix 5017 of Mc CUMBER

Birth Date: 3-9-2005

Cow +15050769

Tattoo: 5017

#Sitz Traveler 8180
SAV 8180 Traveler 004
13512009 +Boyd Forever Lady 8003

#GDAR Traveler 71
Sitz Everelda Entense 1137
#AAR New Trend
SVF Forever Lady 57D

#+Mc Cumber 124 Traveler 212
Miss Wix 702 of Mc Cumber
+12829264 Miss Wix 235 of Mc Cumber

#Traveler 124 GDAR
#Miss Wix 365 of Mc Cumber
#Shoshone Viking GD60 (GDF)
#Miss Wix 117 of Mc Cumber

CW	I+1
MARB	IMF
I+14	-01
REA	UREA
I+12	+16
FAT	UFAT
I+007	+020

SELLING BUYER'S CHOICE OF
LOTS 10A OR 10B.

Bred to calve January 20, 2007 to SINCLAIR EXTRA 4X13 and exposed to him after April 29, 2006.

BEPD	WEPD	YEPD	MILK
I+3.9	.05	I+44	.05
I+79	.05	I+27	.05

The result of mating the record-setting Genex/CRI Sire SAV 8180 Traveler 004 to a second generation Miss Wix of McCumber embryo donor who is from the same embryo flush as the great female producing sire McCumber Foundation 701.

The dam of this heifer has a progeny weaning ratio of 107 on five natural calves and a progeny yearling ratio of 109 on two head to establish her as one of the all-time great daughters of the famous Miss Wix 235 of McCumber.



Miss Wix 918 Of McCumber - From the 235 branch of the Miss Wix family.



Miss Wix 5017 Of McCumber - Lot 10B

Miss Wix 7007 of McCumber



Miss Wix 7007 Of McCumber — Lot 11



Miss Wix 235 Of McCumber — The legendary grandam of Lot 11.



Miss Wix 7007 of Mc CUMBER

Birth Date: 3-6-1997

Cow +12829266

Tattoo: 7007

#Traveler 124 GDAR
#Miss Wix 365 of Mc Cumber

#QAS Traveler 23-4
Rachel Rito 813 GDAR
#Shoshone 247 PJM
#Miss Wix 294 of Mc Cumber

#Rito 054 GDAR
Miss Wix 030 of Mc Cumber
11485863

#CSU Rito 4114
#Blackcap Forever 485 GDAR
#Shoshone Viking GD60 (GDF)
#Miss Wix 117 of Mc Cumber

CW	1-5
MARB	1+.05
REA	1+.06
FAT	1-.004
IMF	+.08
UREA	+.15
UFAT	+.043

This phenomenal herd sire producer is the dam of

BEPD	WEPD	YEPD	MILK
+4.3	.35	+27	.34
		+49	.30
			+28
			.18

McCumber Total Value 449 who sold one-half interest for \$10,000 to Larry Wunderlich of Texas as the second top-selling bull of the 2005 McCumber Bull Sale and has also been used successfully in the breeding family at McCumber Angus Ranch.

This highly productive female balances a progeny birth ratio of 96 with a progeny weaning ratio of 104 on six natural calves and a progeny yearling ratio of 102 on five head along with progeny IMF and ultrasound



MC CUMBER TOTAL VALUE 449

Birth Date: 2-1-2004

Bull 14798068

Tattoo: 449

#Vermilion Dateline 7078
MC Cumber 7111 Total Value
14201122

#Connealy Dateline
#Vermilion Blackbird 5044
#GDAR Traveler 71
#Miss Wix 365 of Mc Cumber

#+Mc Cumber 124 Traveler 212
Miss Wix 7007 of Mc Cumber
+12829266

#Traveler 124 GDAR
#Miss Wix 365 of Mc Cumber
#Rito 054 GDAR
Miss Wix 235 of Mc Cumber

IMF	+.06
UREA	+.28
UFAT	+.039

FOR REFERENCE ONLY.

This promising young sire is triple-bred to the Miss Wix family sired by McCumber 7111 Total Value from a top-producing dam featured in this sale as Lot 11.

This bull sold one-half interest for \$10,000 to Larry Wunderlich of Texas as the second top-selling bull of the 2005 McCumber Bull Sale.

BEPD	WEPD	YEPD	MILK
+2.9	.37	+36	.30
		+65	.27
			+27
			.10



McCumber Total Value 449 — Reference Sire E.

Miss Wix of McCumber Family



11A

Miss Wix 5003 of Mc Cumber

Birth Date: 2-15-2005

Cow +15050759

Tattoo: 5003

#N Bar Emulation EXT
Leachman Right Time
#11750711 Leachman Erica 0025

#Emulation N Bar 5522
N Bar Primrose 2424
#Tehama Bando 155
Leachman Erica 8058

#+Mc Cumber 124 Traveler 212
Miss Wix 7007 of Mc Cumber
+12829266 Miss Wix 030 of Mc Cumber

#Traveler 124 GDAR
#Miss Wix 365 of Mc Cumber
#Rito 054 GDAR
Miss Wix 235 of Mc Cumber

CW	IMF
1+3	
MARB	REA
1-02	+10
UREA	FAT
1+08	+10
UFAT	
1+012	+039

A special attraction from the embryo program from the mating of the \$160,000 Pathfinder Sire Leachman Right Time to the herd sire producing Miss Wix 7007 of McCumber who balances a progeny birth ratio of 96 with a progeny weaning ratio of 104 on six natural calves and a progeny yearling ratio of 102 on five head combined with progeny IMF and ultrasound ribeye ratios of 101 and 102 respectively on ten head.

A maternal sister weaned her first calf with a ratio of 109 and a maternal brother was the second top-selling bull of the 2005 McCumber Bull Sale.

Bred to calve February 2, 2007 to MCCUMBER 004 TRAVELER 513.
Exposed to SINCLAIR EXTRA 4X13 after April 29, 2006.

BEPD	WEPD	YEPD	MILK
1+3.3	.05	1+36	.05
1+66	.05	1+24	.05

12

Miss Wix 529 of Mc Cumber

Birth Date: 1-22-2005

Cow 15050885

Tattoo: 529

#N Bar Emulation EXT
Leachman Right Time
#11750711 Leachman Erica 0025

#Emulation N Bar 5522
N Bar Primrose 2424
#Tehama Bando 155
Leachman Erica 8058

#+Mc Cumber 124 Traveler 212
Miss Wix 2190 of Mc Cumber
14201285 #+Miss Wix 8009 Mc Cumber

#Traveler 124 GDAR
#Miss Wix 365 of Mc Cumber
#RR Scotchcap 9440
Miss Wix 235 of Mc Cumber

CW	IMF
1+5	
MARB	REA
1+00	+16
UREA	FAT
1+07	+26
UFAT	
1+017	+013

Earning an individual IMF ratio of 124 and an individual ultrasound ribeye ratio of 107 while balancing a modest individual birth ratio of 88 with individual weaning and yearling ratios of 107 and 111 respectively, this bred heifer is offered as a special attraction by the \$160,000 Pathfinder Sire Leachman Right Time.

The dam of this female is a double-bred Miss Wix balancing a progeny birth ratio of 88 with progeny weaning and yearling ratios of 103 and 102 respectively coupled with a progeny IMF ratio of 125 on her first two calves.

Bred to calve January 21, 2007 to SINCLAIR EXTRA 4X13 and exposed to him after April 29, 2006.

BEPD	WEPD	YEPD	MILK
+2.0	.38	+41	.30
+78	.28	+22	.25

Miss Wix 5003 Of McCumber — Lot 11A

13

Miss Wix 5164 of Mc Cumber

Birth Date: 2-26-2005

Cow 15050848

Tattoo: 5164

#+Leachman Right Time
MC Cumber Tradition 383
14667477 +Lassie 7015 of Mc Cumber

#N Bar Emulation EXT
Leachman Erica 0025
#+Mc Cumber 124 Traveler 212
#Lassie 648 of Mc Cumber

Mc Cumber 701FOUNDATION 0101
Miss Wix 3213 of Mc Cumber
14442579 +Miss Wix 8006 of Mc Cumber

+Mc Cumber Foundation 701
#Lassie 587 of Mc Cumber
#RR Scotchcap 9440
Miss Wix 235 of Mc Cumber

IMF
-03
UREA
-13
UFAT
+023

This promising bred heifer combines the best of the Miss Wix and Lassie families sired by the powerful McCumber Tradition 383.

This female is a granddaughter of the Pathfinder Sire Leachman Right Time and tracing to the famous Miss Wix 235 of McCumber.

Bred to calve January 19, 2007 to MCCUMBER 004 TRAVELER 513.
Exposed to SINCLAIR EXTRA 4X13 after April 29, 2006.

BEPD	WEPD	YEPD	MILK
+3.3	.36	+29	.29
+59	.24	+19	.07



Miss Wix 529 Of
McCumber —
Lot 12

Miss Wix 5164
Of McCumber —
Lot 13



Miss Wix of McCumber Family



Miss Wix 5107 Of McCumber — Lot 14A

14 Miss Wix 843 of Mc CUMBER

Birth Date: 2-13-1998

Cow 13103370

Tattoo: 843

#VDAR Rito 953
Mc Cumber 953 Rito 420
#12172466 #Gale 607 of Mc Cumber

#Rito 2100 GDAR
Miss Wix 903 of Mc Cumber
#Traveler 1148 GDAR
#Gale 413 of Mc Cumber

IMF
-.03
UREA
+.11
UFAT
+.026

#Mc Cumber 124 Traveler 212 #Traveler 124 GDAR
Miss Wix 6101 of Mc Cumber #Miss Wix 365 of Mc Cumber
#12578645 #Miss Wix 0105 of Mc Cumber 054 PJM 1438
#Miss Wix 128 of Mc Cumber

A proven producer with a progeny weaning ratio of 104 on six calves and a progeny yearling ratio of 105 on three head.

This daughter of the Pathfinder Sire McCumber 953 Rito 420 was produced from a third generation Pathfinder Dam with a progeny weaning ratio of 112 on eight calves and a progeny yearling ratio of 111 on seven head coupled with progeny IMF and ultrasound ribeye ratios of 107 and 105 respectively on six head.

Bred to calve January 17, 2007 to MCCUMBER TRADITION 383. Exposed to SITZ JLS EMULATION EXT 536P from May 12, 2006 to June 1, 2006. Exposed to SINCLAIR EXTRA 4X13 after June 1, 2006.



Vermilion Dateline 7078 - His daughters sell.

14A Miss Wix 5107 of Mc CUMBER

Birth Date: 2-8-2005

Cow 15050790

Tattoo: 5107

#Connealy Dateline
Vermilion Dateline 7078
#12810693 #Vermilion Blackbird 5044

#DHD Traveler 6807
#Eila Eila of Conanga
#Leachman Right Time
Vermilion Blackbird 3525

#Mc Cumber 953 Rito 420
Miss Wix 843 of Mc Cumber
13103370 #Miss Wix 6101 of Mc Cumber

#VDAR Rito 953
#Gale 607 of Mc Cumber
#Mc Cumber 124 Traveler 212
#Miss Wix 0105 of Mc Cumber

IMF
-.05
UREA
+.40
UFAT
+.004

A tremendous bred heifer from the Miss Wix family by the high-performance Pathfinder Sire known as VRD.

This female earned an individual weaning ratio of 106 combined with individual IMF and ultrasound ribeye ratios of 109 and 107 respectively from a productive dam with a progeny weaning ratio of 104 on six calves and a progeny yearling ratio of 105 on three head.

The grandam is a third generation Pathfinder Dam with a progeny weaning ratio of 111 on eight calves and a progeny yearling ratio of 111 on seven head combined with progeny IMF and ultrasound ribeye ratios of 107 and 105 respectively on six head.

Bred to calve February 3, 2007 to SINCLAIR EXTRA 4X13 and exposed to him after April 29, 2006.

BEPD	WEPD	YEPD	MILK
+3.5	.39	+.47	.32
.89	.29	+.24	.27

15 Miss Wix 575 of Mc CUMBER

Birth Date: 2-2-2005

Cow 15050929

Tattoo: 575

#Sitz Traveler 8180
SAV 8180 Traveler 004
13512009 +Boyd Forever Lady 8003

#GDAR Traveler 71
Sitz Everelda Entense 1137
#AAR New Trend
SVF Forever Lady 57D

White Oak Precise 6002
Miss Wix 3124 of Mc Cumber
14443311 #Miss Wix 6101 of Mc Cumber

#GAR Precision 1680
Stone Gate Jessie
#Mc Cumber 124 Traveler 212
#Miss Wix 0105 of Mc Cumber

CW
1.3
MARB
1.23
REA
1.20
FAT
1.004
IMF
+.03
UREA
+.46
UFAT
-.002

This Miss Wix heifer by the record-setting Genex/CRI

Sire SAV 8180 Traveler 004 combines individual weaning and yearling ratios of 107 and 104 respectively with individual IMF and ultrasound ribeye ratios of 106 as the first calf from a two-year-old dam to rank in the top ten percent among non-parent females for Weaning Weight EPD and Milk EPD while ranking in the top 15 percent for both Yearling Weight EPD and Ultrasound Ribeye Area EPD.

The dam of this heifer is the maternal sister to Lot 14 descending from the third generation Pathfinder Dam Miss Wix 6101 of McCumber.

Bred to calve February 3, 2007 to SINCLAIR EXTRA 4X13 and exposed to him after April 29, 2006.

BEPD	WEPD	YEPD	MILK
+4.9	.37	+.50	.30
.87	.27	+.26	.16

Miss Wix of McCumber Family



*Miss Wix 528 Of McCumber -
Lot 16*

16 Miss Wix 528 of Mc CUMBER

Birth Date: 1-22-2005

Cow 15050884

Tattoo: 528

#Connealy Dateline
Vermilion Dateline 7078
#12810693

#DHD Traveler 6807
#Eila Eila of Conanga
#+Leachman Right Time
Vermilion Blackbird 3525

CW
+5
MARB
+0.03
REA
+1.16
FAT
+0.04
UFAT
-0.02

+Mc Cumber Foundation 701
Miss Wix 193 of Mc Cumber
13913211

+Mc Cumber 124 Traveler 212
Miss Wix 235 of Mc Cumber
Mc Cumber Stretch 604
Miss Wix 256 of Mc Cumber

This Miss Wix heifer blends the high-performance of the Pathfinder Sire known as VRD with the maternal strength of McCumber Foundation 701 and the Pathfinder Sires McCumber 124 Traveler 212 and McCumber Stretch 604.

BEPD	WEPD	YEPD	MILK
+4.5	.38	+42	.31
			+79
			.28
			+19
			.26

This female has an individual ultrasound ribeye ratio of 108 from a dam with progeny IMF and ultrasound ribeye ratios of 103 and 104 respectively on three head.

Bred to calve January 23, 2007 to MCCUMBER TOTAL VALUE 449.
Exposed to SINCLAIR EXTRA 4X13 after April 29, 2006.

17 Miss Wix 5165 of Mc CUMBER

Birth Date: 2-27-2005

Cow 15050849

Tattoo: 5165

#AAR New Trend
MC Cumber New Trend 1206
+14201196

#VDAR Shoshone 548
Donna AAR 74
+Mc Cumber 124 Traveler 212
Miss Wix 235 of Mc Cumber

IMF
-0.07
UREA
+0.33
UFAT
-0.015

+Mc Cumber Powertrain HC 1025
Miss Wix 9166 of Mc Cumber
13365363

#PAPA Equator 2928
Rosetta 048 of Mc Cumber
Prairie Eden Southern Trend
#Miss Wix 051 of Mc Cumber

A bred heifer with an individual ultrasound ribeye ratio of 105

BEPD	WEPD	YEPD	MILK
+7.0	.38	+20	.31
			+42
			.27
			+22
			.11

by the high maternal and high ribeye area sire McCumber New Trend 1206 who is the result of mating the legendary Pathfinder Sire AAR New Trend to a full sister to McCumber Foundation 701.

The grandam of this heifer is a second generation Pathfinder Dam.
Bred to calve January 17, 2007 to SINCLAIR EXTRA 4X13 and exposed to him from April 29, 2006 to June 1, 2006. Exposed to LT TIMBERWOLF 5014 after June 1, 2006.



*Miss Wix 411 Of McCumber -
\$27,000 female from the Miss Wix family.*



*Miss Wix 574 Of McCumber -
Lot 18*

18 Miss Wix 574 of Mc CUMBER

Birth Date: 2-2-2005

Cow 15050928

Tattoo: 574

#Vermilion Dateline 7078
MC Cumber 7111 Total Value
14201122

#Connealy Dateline
#Vermilion Blackbird 5044
#GDAR Traveler 71
#Miss Wix 365 of Mc Cumber

IMF
+0.01
UREA
+0.38
UFAT
+0.013

+Mc Cumber 054 Rito 5009
Miss Wix 8101 of Mc Cumber
13103392

#Rito 054 GDAR
#Miss Wix 365 of Mc Cumber
#PAPA Equator 2928
#Miss Wix 051 of Mc Cumber

This triple Miss Wix female is a daughter of McCumber 7111

BEPD	WEPD	YEPD	MILK
+3.1	.38	+43	.31
			+75
			.28
			+19
			.11

Total Value combining an individual birth ratio of 96 with individual weaning and yearling ratios of 101 and 104 respectively along with individual IMF and ultrasound ribeye ratios of 107 and 112 respectively.

This female traces to a Pathfinder third dam.

Bred to calve January 11, 2007 to SINCLAIR EXTRA 4X13 and exposed to him after April 29, 2006.

19 Miss Wix 5217 of Mc CUMBER

Birth Date: 4-14-2005

Cow 15170640

Tattoo: 5217

#AAR New Trend
BT New Trend 172K
+13629635

#VDAR Shoshone 548
Donna AAR 74
#+Leachman Right Time
Sitz Everelda Entense 1905

IMF
+0.16
UREA
+0.03
UFAT
+0.011

#Mr Wix of Mc Cumber 204
Miss Wix 989 of Mc Cumber
13388547

#Tehama Bando 155
+Miss Wix 204 of Mc Cumber
Mc Cumber 054 Rito 326
Miss Wix 305 of Best Angus

A granddaughter to the high maternal Pathfinder Sire AAR

BEPD	WEPD	YEPD	MILK
+2.2	.38	+23	.31
			+49
			.28
			+27
			.18

New Trend by the McCumber herd sire BT New Trend 172K with an individual IMF ratio of 106.

The dam of this heifer is a daughter of the high maternal Pathfinder Sire Mr Wix of McCumber 204.

Bred to calve February 12, 2007 to SINCLAIR EXTRA 4X13 and exposed to him after April 29, 2006.



*Miss Wix 415 Of McCumber -
\$17,000 female from the Miss Wix family.*

Miss Wix of McCumber Family



20

Miss Wix 928 of Mc CUMBER

Birth Date: 2-4-1999

Cow 13364108

Tattoo: 928

Mc Cumber 054 Rito 5009
+12381565

#Rito 054 GDAR

#Miss Wix 365 of Mc Cumber

#CSU Rito 4114

#Blackcap Forever 485 GDAR

#Shoshone 247 PJM

#Miss Wix 294 of Mc Cumber

Miss Wix 498 of Mc Cumber
12166147

#+Mc Cumber 124 Traveler 212

Miss Wix 063 of Mc Cumber

#Traveler 124 GDAR

#Miss Wix 365 of Mc Cumber

#Rito 054 GDAR

Miss Wix 543 of Mc Cumber

IMF
+16
UREA
-.37
UFAT
+.031

This proven producer is triple-bred to the Miss Wix family sired by a full brother to the famous herd sire producer Miss Wix 903 of McCumber.

This cow is also double-bred to the Pathfinder Sire Rito 054 GDAR and earned an individual IMF ratio of 136 while recording a progeny IMF ratio of 102 on three head from a dam who couples a progeny IMF ratio of 112 on six calves balanced with a progeny birth ratio of 99 and a progeny weaning ratio of 103 on five calves.

Bred to calve January 18, 2007 to SAV 8180 TRAVELER 004. Exposed to SITZ JLS EMULATION EXT 536P from May 12, 2006 to June 1, 2006. Exposed to LT TIMBERWOLF 5014 after June 1, 2006.



Miss Wix 498 Of McCumber - The dam of Lot 20.

21

Miss Wix 928 Of McCumber - Lot 20

Miss Wix 8101 of Mc CUMBER

Birth Date: 3-5-1998

Cow 13103392

Tattoo: 8101

Mc Cumber 054 Rito 5009
+12381565

#Rito 054 GDAR

#Miss Wix 365 of Mc Cumber

#CSU Rito 4114

#Blackcap Forever 485 GDAR

#Shoshone 247 PJM

#Miss Wix 294 of Mc Cumber

Miss Wix 555 of Mc Cumber
12348655

#PAPA Equator 2928

#Miss Wix 051 of Mc Cumber

#+PAPA Power 096

#PAPA Envious Blackbird 8849

#Rito 054 GDAR

#Miss Wix 528 of Mc Cumber

IMF
-.15
UREA
+.09
UFAT
-.004

This double Miss Wix is sired by a full brother to the famous herd sire producer Miss Wix 903 of McCumber from a dam by the high-performance Pathfinder Sire PAPA Equator 2928.

This female descends from a grandam who is a second generation Pathfinder Dam.

Bred to calve February 2, 2007 to MCCUMBER TRADITION 383. Exposed to SITZ JLS EMULATION EXT 536P from May 12, 2006 to June 1, 2006. Exposed to SINCLAIR EXTRA 4X13 after June 1, 2006.



Miss Wix 903 Of McCumber - Full sister to the sire of Lots 20 and 21.

Miss Wix of McCumber Family



Miss Wix 5168 Of McCumber - The grandam of Lot 24.

22 Miss Wix 765 of Mc CUMBER

Birth Date: 2-22-1997

Cow 12823354

Tattoo: 765

VDAR Rito 953
#11754914

#Rito 2100 GDAR
Miss Wix 903 of Mc Cumber

#Rito Ever 865 GDAR
#Blackcap Lady 999 GDAR
#Rito 054 GDAR
#Miss Wix 365 of Mc Cumber

Miss Wix 063 of Mc Cumber
11485871

#Rito 054 GDAR
Miss Wix 543 of Mc Cumber

#CSU Rito 4114
#Blackcap Forever 485 GDAR
#Nichols Landmark L56
#Miss Wix 117 of Mc Cumber

CW
L-7
MARB
+0.03
IMF
-0.04
REA
+0.20
UREA
+0.12
FAT
+0.07
UFAT
+0.06

A proven producer blending the maternal genetics of the Pathfinder Sires VDAR Rito 953 and Rito 054 GDAR.

This cow combines a progeny birth ratio of 99 with a progeny weaning ratio of 102 on six calves and a progeny yearling ratio of 103 on five head from a dam who combines a progeny birth ratio of 99 with a progeny weaning ratio of 106 on seven calves and a progeny yearling ratio of 107 on four head.

Bred to calve January 21, 2007 to SAV 8180 TRAVELER 004. Exposed to SITZ JLS EMULATION EXT 536P from May 12, 2006 to June 1, 2006. Exposed to LT TIMBERWOLF 5014 after June 1, 2006.

BEPD	WEPD	YEPD	MILK
+2.2	.44	+27	.41
+51	.38	+24	.24

23 Miss Wix 596 of Mc CUMBER

Birth Date: 2-6-2005

Cow 15050949

Tattoo: 596

MC Cumber Classic 202
+14208279

#Tehama Bando 155
#Miss Wix 365 of Mc Cumber

#Band 234 of Ideal 3163
Tehama Blackcap G373
#Shoshone 247 PJM
#Miss Wix 294 of Mc Cumber

Miss Wix 0192 of Mc Cumber
13608086

+Hilltop Rito H218
Miss Wix 765 of Mc Cumber

+Mc Cumber 054 Rito 5009
+GP Blackbird 1901
#VDAR Rito 953
Miss Wix 063 of Mc Cumber

IMF
+0.01
UREA
+0.22
UFAT
+0.09

A granddaughter of the proven producer who sells as Lot 22.

This bred heifer is by the \$39,000 McCumber Classic 202 with an individual IMF ratio of 104 and an individual ultrasound ribeye ratio of 101 from a dam with progeny IMF and ultrasound ribeye ratios of 106 and 102 respectively on four head.

Bred to calve February 25, 2007 to SINCLAIR EXTRA 4X13 and exposed to him after April 29, 2006.

BEPD	WEPD	YEPD	MILK
+2.2	.37	+29	.30
+51	.27	+17	.11



Miss Wix 596 Of McCumber - Lot 23



Miss Wix 5174 Of McCumber - The dam of Lot 25.

24 Miss Wix 508 of Mc CUMBER

Birth Date: 1-15-2005

Cow 15050780

Tattoo: 508

SAV 8180 Traveler 004
13512009

#Sitz Traveler 8180
+Boyd Forever Lady 8003

#GDAR Traveler 71
Sitz Everelda Entense 1137
#AAR New Trend
SVF Forever Lady 57D

Miss Wix 3023 of Mc Cumber
+14670742

#Mr Wix of Mc Cumber 204
+Miss Wix 5168 of Mc Cumber

#Tehama Bando 155
+Miss Wix 204 of Mc Cumber
#Rito 054 GDAR
#Miss Wix 756 of Mc Cumber

CW
L-3
MARB
+0.14
IMF
-0.08
REA
+0.03
UREA
-0.41
FAT
+0.07
UFAT
-0.14

This bred heifer from the Miss Wix family is a daughter of the record-setting Genex/CRI Sire SAV 8180 Traveler 004.

The noted grandam of this female served as a second generation Miss Wix of McCumber donor and she is a maternal sister to the famous Shady Brook donor Miss Wix 918 of McCumber.

Bred to calve January 30, 2007 to SITZ JLS EMULATION EXT 536P. Exposed to SINCLAIR EXTRA 4X13 after April 29, 2006.

BEPD	WEPD	YEPD	MILK
+1.3	.32	+37	.23
+73	.20	+23	.18

25 Miss Wix 8161 of Mc CUMBER

Birth Date: 4-14-1998

Cow 13103441

Tattoo: 8161

GDAR Seven Eleven 0157
11447257

#+GDAR Oscar 711
LT Blackcap Lady 216 GDAR

#Baldridge Oscar
#LT Forever Lady 395 GDAR
#QAS Traveler 23-4
Blackcap Lady 0119 GDAR

Miss Wix 5174 of Mc Cumber
+12381571

#Rito 054 GDAR
#Miss Wix 756 of Mc Cumber

#CSU Rito 4114
#Blackcap Forever 485 GDAR
#Rito 2100 GDAR
Miss Wix 235 of Mc Cumber

IMF
-0.01
UREA
-0.02
UFAT
+0.30

A proven producer from the noted Miss Wix 5174 of

McCumber who has a progeny weaning ratio of 105 on six calves and a progeny yearling ratio of 106 on three head.

The grandam of this cow is a noted Pathfinder Dam best known for producing the Shady Brook donor Miss Wix 918 of McCumber.

Bred to calve January 28, 2007 to SAV 8180 TRAVELER 004. Exposed to SITZ JLS EMULATION EXT 536P from May 12, 2006 to June 1, 2006. Exposed to SINCLAIR EXTRA 4X13 after June 1, 2006.

BEPD	WEPD	YEPD	MILK
+3.6	.38	+22	.34
+42	.33	+13	.17



Miss Wix 918 Of McCumber - Maternal sister to the dam of Lot 25.

Lassie of McCumber Family Tree



LASSIE 272 OF MCCUMBER



LASSIE 587 OF MCCUMBER

LASSIE 648 OF MCCUMBER

LASSIE 7015 OF MCCUMBER



MCCUMBER TRADITION 383



LASSIE 688 OF MCCUMBER



LASSIE 6014 OF MCCUMBER



LASSIE 974 OF MCCUMBER



MCCUMBER 7078 VRD 3108



LASSIE 206 OF MCCUMBER



MCCUMBER TOTAL VALUE 504

Lassie 6014 of McCumber



Lassie 6014 Of McCumber - Lot 26



*Lassie 688 Of McCumber - The Pathfinder
Dam of Lot 26.*

26

LASSIE 6014 OF MC CUMBER

Birth Date: 3-4-2006

Cow +15428719

Tattoo: 6014

#GAR Precision 1680
CA Future Direction 5321
12493607

CA Miss Power Fix 308

#Tehama Bando 155
9J9 GAR 856
#+SAF Power Fix
CA Lady Eight 1015

#Mc Cumber 124 Traveler 212
Lassie 688 of McCumber
#12578636

Lassie 272 of McCumber

#Traveler 124 GDAR
#Miss Wix 365 of McCumber
#AAR New Trend
Lassie 252 of McCumber

CW
1+10
MARB
1+25
REA
1+48
FAT
1+002
IMF
1+42
UREA
1+55
UFAT
1+0

A special sale attraction from the powerful and productive Lassie family sired by the Genex/CRI ultrasound leader CA Future Direction 5321 who has no equal among proven sires for combining IMF EPD and Ultrasound Ribeye Area EPD.

The phenomenal Pathfinder Dam of this heifer records a progeny IMF ratio of 120 and a progeny ultrasound ribeye ratio of 106 in combina-

BEPD	WEPD	YEPD	MILK
1+2.5	.05	1+34	.05
1+68	.05	1+30	.05

F

MC CUMBER TRADITION 383

Birth Date: 2-11-2003

Bull 14667477

Tattoo: 383

#N Bar Emulation EXT
Leachman Right Time
#+11750711

Leachman Erica 0025

#Emulation N Bar 5522
N Bar Primrose 2424
#Tehama Bando 155
Leachman Erica 8058

#Mc Cumber 124 Traveler 212
Lassie 7015 of McCumber
+12828744

#Lassie 648 of McCumber

#Traveler 124 GDAR
#Miss Wix 365 of McCumber
#Rito 2100 GDAR
Lassie 252 of McCumber

CW
1+4
MARB
1+00
REA
1+11
FAT
1+007
IMF
+03
UREA
+16
UFAT
+036

FOR REFERENCE ONLY.

This powerful and impressive son of the \$160,000 Pathfinder Sire Leachman Right Time has earned a progeny IMF ratio of 103 on 16 head from the productive Lassie family.

This bull was one of the top-selling bulls of the 2004 McCumber Bull Sale to Heritage Angus Farm of Mississippi from a dam who combines a progeny birth ratio of 99 with a progeny weaning ratio of 102 on three calves and a progeny yearling ratio of 105 on two head, stemming from the Pathfinder Dam Lassie 648 of McCumber who also produced the second generation Pathfinder Dam Lassie 587 of McCumber.

BEPD	WEPD	YEPD	MILK
+4.2	.61	+36	.60
+74	.49	+21	.24



McCumber Tradition 383 - Reference Sire F.

Lassie 974 of McCumber



27 LASSIE 974 OF MC CUMBER

Birth Date: 2-14-1999

Cow 13364124

Tattoo: 974

#+Mc Cumber 124 Traveler 212
Mc Cumber Foundation 701
 +12829263 Miss Wix 235 of Mc Cumber

#AAR New Trend
Lassie 272 of Mc Cumber
 11824650 Lassie 252 of Mc Cumber

#Traveler 124 GDAR
 #Miss Wix 365 of Mc Cumber
 #Shoshone Viking GD60 (GDF)
 #Miss Wix 117 of Mc Cumber

#VDAR Shoshone 548
 Donna AAR 74
 #Shoshone Viking GD60 (GDF)
 Lassie 339 of Mc Cumber

CW	IMF
1+1	10
MARB	12
REA	20
FAT	027
1-005	027

This beautiful female who blends the best of the Lassie and Miss Wix families is by the great female producing sire McCumber Foundation 701 from an outstanding dam by the Pathfinder Sire AAR New Trend, featuring a tabulation which traces twice to the legendary Pathfinder Sire Shoshone Viking GD60.

BEPD	WEPD	YEPD	MILK
+4.2	.42	+27	.39
+58	.36	+22	.22

Lassie 974 Of McCumber - Lot 27

This female has a progeny ultrasound ribeye ratio of 110 on three head coupled with a progeny weaning ratio of 100 on five calves and a progeny yearling ratio of 105 on four head and her dam earned progeny weaning and yearling ratios of 105 on ten calves.
 McCumber 7078 VRD 3108, a son of this cow, was the \$11,500 top-selling bull of the 2004 McCumber Bull Sale to Red Rock Angus of South Dakota.

Lassie 688 of McCumber, a maternal sister to this cow, was the top-selling cow of the 2003 McCumber Female Sale and other maternal sisters include the outstanding females Lassie 648 of McCumber, Lassie 7015 of McCumber and Lassie 771 of McCumber who sells as Lot 28.
 Bred to calve January 25, 2007 to SINCLAIR EXTRA 4X13 and exposed to him after May 12, 2006.



McCumber 7078 VRD 3108 - Reference Sire G.

MC CUMBER 7078 VRD 3108

Birth Date: 2-16-2003

Bull 14443306

Tattoo: 3108

#Connealy Dateline
Vermilion Dateline 7078
 #12810693 #Vermilion Blackbird 5044

#DHD Traveler 6807
 #Ella Ella of Conanga
 #+Leachman Right Time
 Vermilion Blackbird 3525

+Mc Cumber Foundation 701
Lassie 974 of Mc Cumber
 13364124 Lassie 272 of Mc Cumber

#+Mc Cumber 124 Traveler 212
 Miss Wix 235 of Mc Cumber
 #AAR New Trend
 Lassie 252 of Mc Cumber

CW	IMF
1+7	15
MARB	03
REA	21
FAT	003
1+003	019

FOR REFERENCE ONLY.

The \$11,500 top-selling bull of the 2004 McCumber Bull Sale to Red Rock Angus of South Dakota by the high-performance sire known as VRD from the outstanding female featured in this sale as Lot 27.

This bull earned individual weaning and yearling ratios of 114 and 116 respectively combined with an individual ultrasound ribeye ratio of 119 and he ranks in the top four percent among current sires for both Yearling Weight EPD and Ultrasound Ribeye Area EPD.

BEPD	WEPD	YEPD	MILK
+5.3	.38	+52	.32
+100	.29	+21	.27

Lassie of Mc Cumber Family



Lassie 5122 Of Mc Cumber - Lot 28A

28 LASSIE 771 OF MC CUMBER

Birth Date: 2-22-1997 Cow 12827757 Tattoo: 771

Mc Cumber 054 Rito 5009
+12381565 #Miss Wix 365 of Mc Cumber

Lassie 272 of Mc Cumber
11824650 Lassie 252 of Mc Cumber

#CSU Rito 4114
#Blackcap Forever 485 GDAR
#Shoshone 247 PJM
#Miss Wix 294 of Mc Cumber

#VDAR Shoshone 548
Donna AAR 74
#Shoshone Viking GD60 (GDF)
Lassie 339 of Mc Cumber

IMF
-11
UREA
+12
UFAT
+0

This maternal sister to Lot 27 has a progeny weaning ratio of 102 on seven calves carrying on the productive tradition of her time-tested dam who earned progeny weaning and yearling ratios of 105 on ten natural calves.

A daughter of this cow was a \$4,500 heifer calf in the 2000 Mc Cumber Female Sale.

Bred to calve January 24, 2007 to SITZ JLS EMULATION EXT 536P and exposed to him from May 12, 2006 to June 12, 2006. Exposed to LT TIMBERWOLF 5014 after June 1, 2006.

28A LASSIE 5122 OF MC CUMBER

Birth Date: 2-11-2005 Cow 15050806 Tattoo: 5122

Mc Cumber 7078 VRD 3116
14443308 Gale 836 of Mc Cumber

#Connealy Dateline
#Vermilion Blackbird 5044
+Circle Oak Lucys Boy 625
Gale 6129 of Mc Cumber

IMF
+03
UREA
+21
UFAT
-004

+Mc Cumber 054 Rito 5009
Lassie 771 of Mc Cumber
12827757 Lassie 272 of Mc Cumber

#Rito 054 GDAR
#Miss Wix 365 of Mc Cumber
#AAR New Trend
Lassie 252 of Mc Cumber

This bred heifer blends the high-performance genetics of Vermilion Dateline 7078 with the maternal influence of the Pathfinder Sires Rito 054 GDAR and AAR New Trend from a dam with a progeny weaning ratio of 102 on seven calves descending from the noted Lassie 272 of Mc Cumber.

Two maternal sisters post a collective progeny weaning ratio of 103.

Bred to calve February 3, 2007 to SINCLAIR EXTRA 4X13 and exposed to him after April 29, 2006.

29 LASSIE 801 OF MC CUMBER

Birth Date: 1-19-1998 Cow 13103341 Tattoo: 801

California Traveler
#11618614 #Tehama Eisa Erica Y699

#OAS Traveler 23-4
Eiskay of Rollin Rock 3302
#Paramount Ambush 2172
#Tehama Eisa Erica W602

CW
-4
MARB
I+26
REA
I-13
FAT
I+010
IMF
+10
UREA
-27
UFAT
+009

#Mc Cumber 124 Traveler 212
Lassie 686 of Mc Cumber
12578634 Lassie 267 of Mc Cumber

#Traveler 124 GDAR
#Miss Wix 365 of Mc Cumber
#Mc Cumber Rito 0054
#Lassie 648 of Mc Cumber

This outstanding producer by the Pathfinder Sire California Traveler combines a progeny birth ratio of 98 with a progeny weaning ratio of 100 on four calves and a progeny yearling ratio of 102 on three head coupled with a progeny IMF ratio of 102 on five head and she traces to the Pathfinder Dam Lassie 648 of Mc Cumber.

A son sold two-thirds interest for \$4,750 in the 2006 Mc Cumber Bull Sale. Bred to calve February 21, 2007 to MCCUMBER 7078 VRD 3108 and exposed to him from May 12, 2006 to June 1, 2006. Exposed to SINCLAIR EXTRA 4X13 after June 1, 2006.



Lassie 545 Of Mc Cumber - Lot 30

30 LASSIE 545 OF MC CUMBER

Birth Date: 1-26-2005 Cow 15050901 Tattoo: 545

Mc Cumber Classic 202
+14208279 #Miss Wix 365 of Mc Cumber

#Tehama Bando 155
#Band 234 of Ideal 3163
Tehama Blackcap G373
#Shoshone 247 PJM
#Miss Wix 294 of Mc Cumber

IMF
-01
UREA
+24
UFAT
-025

+Mc Cumber 054 Rito 5009
Lassie 089 of Mc Cumber
13608003 #Lassie 628 of Mc Cumber

#Rito 054 GDAR
#Miss Wix 365 of Mc Cumber
#GDAR Gold Nugget 766
Lassie 462 of Mc Cumber

A blending of the Lassie and Miss Wix families by the \$39,000 Mc Cumber Classic 202.

This female earned individual weaning and yearling ratios of 106 along with individual IMF and ultrasound ribeye ratios of 109, descending from a Pathfinder grandam.

Bred to calve January 24, 2007 to SINCLAIR EXTRA 4X13 and exposed to him after April 29, 2006.

31 LASSIE 592 OF MC CUMBER

Birth Date: 2-5-2005 Cow 15050945 Tattoo: 592

Mc Cumber Classic 202
+14208279 #Miss Wix 365 of Mc Cumber

#Tehama Bando 155
#Band 234 of Ideal 3163
Tehama Blackcap G373
#Shoshone 247 PJM
#Miss Wix 294 of Mc Cumber

IMF
-20
UREA
+36
UFAT
-028

AAR New Trend 03
Lassie 0006 of Mc Cumber
+13855121 Lassie 462 of Mc Cumber

#+VDAR New Trend 802
AAR Shoshone 616
#+Mc Cumber 124 Traveler 212
#Lassie 648 of Mc Cumber

This bred heifer by the \$39,000 Mc Cumber Classic 202

combines a very modest individual birth ratio of 85 with an individual weaning ratio of 102.

The dam of this female was produced in the embryo program at Mc Cumber Angus Ranch, tracing to the Pathfinder Dam Lassie 648 of Mc Cumber.

Bred to calve February 4, 2007 to MCCUMBER 004 TRAVELER 513. Exposed to SINCLAIR EXTRA 4X13 after April 29, 2006.



Lassie 801 Of Mc Cumber - Lot 29

Lassie of McCumber Family



Lassie 514 Of McCumber - Lot 32

32 **LASSIE 514 OF MC CUMBER**
 Birth Date: 1-18-2005 Cow 15050825 Tattoo: 514

CW	+6
MARB	+0.08
REA	+0.13
FAT	+0.015
IMF	+0.06
UREA	+0.42
UFAT	+0.009

#Sitz Traveler 8180
 SAV 8180 Traveler 004
 13512009 +Boyd Forever Lady 8003

#GDAR Traveler 71
 Sitz Everelda Entense 1137
 #AAR New Trend
 SVF Forever Lady 57D

#Vermilion Dateline 7078
 Lassie 316 of Mc Cumber
 14443319 Lassie 096 of Mc Cumber

#Connealy Dateline
 #Vermilion Blackbird 5044
 +Circle Oak Lucys Boy 625
 Lassie 801 of Mc Cumber

This female records the co-highest Weaning Weight EPD and the second highest Yearling Weight EPD of the offering by the record-setting Genex/CRI Sire SAV 8180 Traveler 004 balancing a modest individual birth ratio of 95 with individual weaning and yearling ratios of 119 and 117 respectively coupled with individual IMF and ultrasound ribeye ratios of 115 and 113 respectively produced as the first calf from a two-year-old dam by the high-performance sire known as VRD.

This heifer ranks in the top one percent among non-parent females for Weaning Weight EPD and in the top two percent for Yearling Weight EPD with a Milk EPD in the top ten percent and an Ultrasound Ribeye Area EPD in the top 20 percent.

Bred to calve February 5, 2007 to SINCLAIR EXTRA 4X13 and exposed to him after April 29, 2006.

BEPD	WEPD	YEPD	MILK
+2.2	.37	+58	.30
+104	.27	+27	.16



Lassie 5167 Of McCumber - Lot 34

33 **LASSIE 960 OF MC CUMBER**
 Birth Date: 2-11-1999 Cow 13364119 Tattoo: 960

#Rito 054 GDAR
 Matthew of Mc Cumber HC 6365
 +12710945 #Miss Wix 365 of Mc Cumber

#CSU Rito 4114
 #Blackcap Forever 485 GDAR
 #Shoshone 247 PJM
 #Miss Wix 294 of Mc Cumber

#GDAR Gold Nugget 766
 Lassie 628 of Mc Cumber
 #12578609 Lassie 462 of Mc Cumber

#Rito 2100 GDAR
 LT Blackcap 3110 GDAR
 #+Mc Cumber 124 Traveler 212
 #Lassie 648 of Mc Cumber

A blending of the Lassie and Miss Wix families sired by a full brother to the famous herd sire producer Miss Wix 903 of McCumber.

The dam of this cow earned a progeny weaning ratio of 104 on six calves and a progeny yearling ratio of 106 on five head.

Bred to calve February 15, 2007 to SITZ JLS EMULATION EXT 536P and exposed to him from May 12, 2006 to June 1, 2006. Exposed to SINCLAIR EXTRA 4X13 after June 1, 2006.

BEPD	WEPD	YEPD	MILK
+3.8	.38	+27	.34
+51	.29	+24	.17

34 **LASSIE 5167 OF MC CUMBER**
 Birth Date: 2-27-2005 Cow 15050851 Tattoo: 5167

#Tehama Bando 155
 MC Cumber Classic 202
 +14208279 #Miss Wix 365 of Mc Cumber

#Band 234 of Ideal 3163
 Tehama Blackcap G373
 #Shoshone 247 PJM
 #Miss Wix 294 of Mc Cumber

+BT New Trend 172K
 Lassie 2197 of Mc Cumber
 14201292 Lassie 658 of Mc Cumber

#AAR New Trend
 +BT Everelda Entense 57D
 #Mc Cumber Stretch 604
 Lassie 031 of Mc Cumber

This bred heifer by the \$39,000 McCumber Classic 202 earned individual weaning and yearling ratios of 115 and 107 respectively combined with individual IMF and ultrasound ribeye ratios of 101 and 111 respectively.

The dam of this female has progeny weaning and yearling ratios of 111 and 108 coupled with progeny IMF and ultrasound ribeye ratios of 102 and 109 respectively on her first two calves.

Exposed to SINCLAIR EXTRA 4X13 from April 29, 2006 to June 1, 2006. Exposed to LT TIMBERWOLF 5014 after June 1, 2006.

BEPD	WEPD	YEPD	MILK
+3.9	.37	+36	.29
+54	.26	+28	.10

IMF	+0.08
UREA	+0.35
UFAT	-0.021

Lassie

Everelda Entense Influence

35

LASSIE 5204 of Mc CUMBER

Birth Date: 3-30-2005

Cow 15170629

Tattoo: 5204

BT New Trend 172K
+13629635

#AAR New Trend
+BT Everelda Entense 57D

#VDAR Shoshone 548
Donna AAR 74
#Leachman Right Time
Sitz Everelda Entense 1905

IMF
+.08
UREA
-.03
UFAT
-.016

Mc Cumber 6122 Equator 8113
Lassie 1155 of Mc Cumber
13913251

#Lassie 708 of Mc Cumber

Mc Cumber Equator 6122
Rosetta 421 of Mc Cumber
#Mr Wix of Mc Cumber 204
Lassie 5128 of Mc Cumber

A bred heifer by the McCumber herd sire BT New Trend 172K by the Lassie family stemming from a Pathfinder grandam. The sire of this female is one of two maternal brothers utilized in the McCumber breeding program. Bred to calve February 20, 2007 to SINCLAIR EXTRA 4X13 and exposed to him from April 29, 2006 to June 1, 2006. Exposed to LT TIMBERWOLF 5014 after June 1, 2006.

BEPD	WEPD	YEPD	MILK
+4.3	.37	+32	.30
			+58
			+32
			.16



SVF Forever Lady 57D - This famous daughter of Sitz Everelda Entense 1905 by Leachman Right Time sold one-half interest for \$190,000 and her influence is represented in the McCumber breeding program through her sons BT New Trend 172K and BT Traveler 228K along with the influence of her full brother BT Right Time 24J.

36

LASSIE 5190 of Mc CUMBER

Birth Date: 3-17-2005

Cow 15170618

Tattoo: 5190

MC Cumber New Trend 1206
+14201196

#AAR New Trend
+Miss Wix 705 of Mc Cumber

#VDAR Shoshone 548
Donna AAR 74
#Mc Cumber 124 Traveler 212
Miss Wix 235 of Mc Cumber

IMF
-.08
UREA
+.11
UFAT
-.027

Mc Cumber 6122 Equator 8113
Lassie 1160 of Mc Cumber
13913254

Lassie 841 of Mc Cumber

Mc Cumber Equator 6122
Rosetta 421 of Mc Cumber
#Mr Wix of Mc Cumber 204
Lassie 267 of Mc Cumber

An exciting blending of the Lassie, Miss Wix and Rosetta families by the McCumber herd sire McCumber New Trend 1206. This female features an elite tabulation which also includes the noted McCumber sires McCumber 124 Traveler 212, McCumber Equator 6122 and Mr Wix of McCumber 204. Bred to calve January 20, 2007 to SINCLAIR EXTRA 4X13 and exposed to him from April 29, 2006 to June 1, 2006. Exposed to LT TIMBERWOLF 5014 after June 1, 2006.

BEPD	WEPD	YEPD	MILK
+4.5	.37	+17	.30
			+39
			.27
			+24
			.09

37

LASSIE 5210 of Mc CUMBER

Birth Date: 4-7-2005

Cow 15170635

Tattoo: 5210

MC Cumber New Trend 1206
+14201196

#AAR New Trend
+Miss Wix 705 of Mc Cumber

#VDAR Shoshone 548
Donna AAR 74
#Mc Cumber 124 Traveler 212
Miss Wix 235 of Mc Cumber

IMF
-.08
UREA
+.23
UFAT
-.014

#Mc Cumber 124 Traveler 212
Lassie 1049 of Mc Cumber
+14001348

#Lassie 648 of Mc Cumber

#Traveler 124 GDAR
#Miss Wix 365 of Mc Cumber
#Rito 2100 GDAR
Lassie 252 of Mc Cumber

This bred heifer blends the Lassie and Miss Wix families sired by McCumber New Trend 1206, tracing twice to the Pathfinder Sire McCumber 124 Traveler 212. The dam of this heifer is a product of the embryo program descending from the Pathfinder Dam Lassie 648 of McCumber. Bred to calve January 29, 2007 to SINCLAIR EXTRA 4X13 and exposed to him after April 29, 2006.

BEPD	WEPD	YEPD	MILK
+5.5	.35	+17	.27
			+33
			.22
			+22
			.07



BT New Trend 172K - This McCumber herd sire is a son of BT Everelda Entense 57D by AAR New Trend.

38

LASSIE 5205 of Mc CUMBER

Birth Date: 3-30-2005

Cow 15170630

Tattoo: 5205

Mc Cumber 701 Foundation 050
13607977

+Mc Cumber Foundation 701
B Pride 488 of Mc Cumber

#Mc Cumber 124 Traveler 212
Miss Wix 235 of Mc Cumber
#VDAR Rito 953
B Pride 084 of Mc Cumber

IMF
-.14
UREA
-.43
UFAT
-.006

+Mc Cumber Foundation 701
Lassie 914 of Mc Cumber
13364103

#Lassie 587 of Mc Cumber

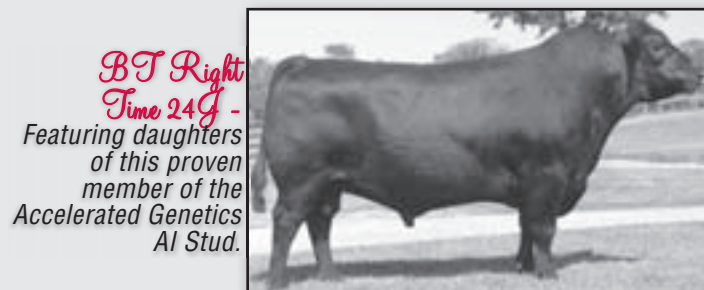
#Mc Cumber 124 Traveler 212
Miss Wix 235 of Mc Cumber
#PAPA Equator 2928
#Lassie 648 of Mc Cumber

A granddaughter of the popular Pathfinder Dam Lassie 587 of McCumber who was a feature of the 2003 McCumber Female Sale. This exciting female is a double granddaughter of the proven sire McCumber Foundation 701. Bred to calve January 27, 2007 to SINCLAIR EXTRA 4X13 and exposed to him from April 29, 2006 to June 1, 2006. Exposed to LT TIMBERWOLF 5014 after June 1, 2006.

BEPD	WEPD	YEPD	MILK
+3.1	.35	+11	.27
			+34
			.21
			+19
			.09



BT Traveler 228K - This McCumber herd sire is a son of BT Everelda Entense 57D by Sitz Traveler 9929.



BT Right Time 24J - Featuring daughters of this proven member of the Accelerated Genetics AI Stud.

B Pride 9124 of McCumber



B Pride 9124 Of McCumber - Lot 39



McCumber Total Value 551 - \$7,000 son of Lot 39.



B PRIDE 9124 OF MC CUMBER

Birth Date: 2-25-1999

Cow #13354327

Tattoo: 9124

#DHD Traveler 6807
Sitz Traveler 9929
#11208317 Sitz Everelda Entense 1137

#OAS Traveler 23-4
#Bemindful Maid DHD 0807
#GDAR Rainmaker 340
Sitz Everelda Entense 2335

#+PJM Power 291
B Pride 839 of McCumber
11208107 #B Pride 134 of McCumber

#PS Power Play (GDF)
Juanada 104 of PJM
#Shoshone Viking GD60 (GDF)
B Pride 616 of McCumber

CW	
1+8	
MARB	IMF
1+.01	+04
REA	UREA
1+.10	+07
FAT	UFAT
1+.003	-001

PATHFINDER DAM.

This productive and proven

Pathfinder Dam has a progeny birth ratio of 99 balanced with a progeny weaning ratio of 107 on five calves while recording a progeny yearling ratio of 104, a progeny IMF ratio of 101 and a progeny ultrasound ribeye ratio of 103 on four head.

BEPD	WEPD	YEPD	MILK
+4.7	.42 +31	.39 +57	.36 +23
			.22



B Pride 929 Of McCumber - From the same family as Lots 39, 40 and 41.



B Pride 969 Of McCumber - From the same family as Lots 39, 40 and 41.

B Pride



B Pride 613 Of McCumber - Lot 40

40 B PRIDE 613 OF McCUMBER

Birth Date: 1-17-2006

Cow #12578603

Tattoo: 613-C06

#N Bar Emulation EXT
Sinclair Extra 4X13
14774030

#Emulation N Bar 5522
N Bar Primrose 2424
#N Bar Prime Time D806
N Bar Lady Ida F1080

SAV 8180 Traveler 004
B Pride 404 of McCumber
14904442

#Sitz Traveler 8180
+Boyd Forever Lady 8003
McCumber 054 Rito 326
#B Pride 5122 of McCumber

CW
1-12
MARB
1-03
REA
1-05
FAT
1-015
IMF
1-02
UREA
1-09
UFAT
1-005

BEPD	WEPD	YEPD	MILK
+2.4	.44	+28	.41
+56	.40	+28	.24

A sale attraction from the first calf crop by the McCumber and Genex featured sire Sinclair Extra 4X13 who was the \$37,000 top-selling bull of the 2005 Sinclair Bull Sale. The third generation Pathfinder Dam of this outstanding prospect balances a progeny birth ratio of 99 with a progeny weaning ratio of 108 and a progeny yearling ratio of 107 on six calves while the grandam has a progeny weaning ratio of 106 on eight calves and a progeny yearling ratio of 107 on four head.

41 B PRIDE 7159 OF McCUMBER

Birth Date: 3-24-1997

Cow 12823409

Tattoo: 7159

#Rito 054 GDAR
McCumber 054 Rito 326
12040302

#CSU Rito 4114
#Blackcap Forever 485 GDAR
#Shoshone 247 PJM
#Miss Wix 294 of McCumber

#Rito 2100 GDAR
B Pride 71 of McCumber
#11038295

#Rito Ever 865 GDAR
#Blackcap Lady 999 GDAR
McCumber Viking 176
#B Pride 937 of McCumber

IMF
+11
UREA
-12
UFAT
+016

A proven producer blending the B Pride and Miss Wix families sired by a full brother to Miss Wix 903 of McCumber. This cow has an impressive progeny IMF ratio of 116 on six head with a son selling two-thirds interest for \$8,500 as one of the top-selling bulls of the 2002 McCumber Bull Sale to Griffin Ranch. Bred to calve February 8, 2007 to MCCUMBER TRADITION 383. Exposed to SITZ JLS EMULATION EXT 536P from May 12, 2006 to June 1, 2006. Exposed to LT TIMBERWOLF 5014 after June 1, 2006.



B Pride 7159 Of McCumber - Lot 41

BEPD	WEPD	YEPD	MILK
+3.1	.45	+22	.43
+37	.38	+21	.26

Lovely Lady



Lovely Lady 547 Of McCumber - Lot 42

42 LOVELY LADY 547 OF McCUMBER

Birth Date: 1-27-2005

Cow 15050903

Tattoo: 547

#+Leachman Right Time
BT Right Time 24J
+13360311

#N Bar Emulation EXT
Leachman Erica 0025
#Traveler 124 GDAR
#Sitz Everelda Entense 1791

IMF
+09
UREA
+44
UFAT
+013

McCumber 6122 Equator 8113
Lovely Lady 0208 McCumber
13608098

McCumber Equator 6122
Rosetta 421 of McCumber
#Mr Wix of McCumber 204
Lovely Lady 5149 McCumber

A promising bred heifer by the Accelerated Genetics Sire BT Right Time 24J with individual weaning and yearling ratios of 105 and 112 respectively combined with individual IMF and ultrasound ribeye ratios of 109 and 111 respectively.

The dam of this female is a granddaughter of the Accelerated Genetics Sire McCumber Equator 6122 and the ABS Global Sire Mr Wix of McCumber 204.

Bred to calve February 17, 2007 to SINCLAIR EXTRA 4X13 and exposed to him after April 29, 2006.

43 LOVELY LADY 5136 OF McCUMBER

Birth Date: 2-14-2005

Cow 15050821

Tattoo: 5136

#+Leachman Right Time
McCumber Tradition 383
14667477

#N Bar Emulation EXT
Leachman Erica 0025
#McCumber 124 Traveler 212
#Lassie 648 of McCumber

IMF
+06
UREA
-08
UFAT
+024

#+Leachman Right Time
Lovely Lady 341 of McCumber
14443328

#N Bar Emulation EXT
Leachman Erica 0025
#Mr Wix of McCumber 204
Lovely Lady 5149 McCumber

This bred heifer by the powerful McCumber Tradition 383 is a double granddaughter of the \$160,000 Pathfinder Sire Leachman Right Time.

This female also traces to the Pathfinder Sires McCumber 124 Traveler 212 and Mr Wix of McCumber 204.

Bred to calve February 12, 2007 to SINCLAIR EXTRA 4X13 and exposed to him after April 29, 2006.

44 LOVELY LADY 5110 OF McCUMBER

Birth Date: 2-9-2005

Cow 15050794

Tattoo: 5110

#Sitz Traveler 8180
Sitz Alliance 6595
#12310707

#GDAR Traveler 71
Sitz Everelda Entense 1137
3 Bar Spike 1766
#Sitz Baramere Jet 155

CW
1-0
MARB
1-13
REA
1-06
FAT
1-026
IMF
+03
UREA
-07
UFAT
+015

+McCumber Foundation 701
Lovely Lady 3145 McCumber
14442525

#+McCumber 124 Traveler 212
Miss Wix 235 of McCumber
Prairie Eden Southern Trend
Lovely Lady 845 McCumber

A bred heifer from the Lovely Lady family by the established Pathfinder Sire Sitz Alliance 6595.

The dam of this female is a daughter of the great female producing sire McCumber Foundation 701.

Bred to calve March 4, 2007 to SINCLAIR EXTRA 4X13 and exposed to him from April 29, 2006 to June 1, 2006. Exposed to LT TIMBERWOLF 5014 after June 1, 2006.

BEPD	WEPD	YEPD	MILK
+3.1	.37	+37	.68
+23	.27	+23	.25

Gale 948 of McCumber



45

GALE 948 of Mc CUMBER

Birth Date: 2-10-1999

Cow 13354301

Tattoo: 948

#Traveler 124 GDAR
Mc Cumber 124 Traveler 212
#+11824721

#QAS Traveler 23-4
Rachel Rito 813 GDAR
#Shoshone 247 PJM
#Miss Wix 294 of McCumber

#McCumber Rito 0054
Gale 5101 of McCumber
12346470

#Rito 054 GDAR
Rosetta 015 of McCumber
#AAR New Trend
#Gale 783 of McCumber

CW	
1-7	
MARB	IMF
1+.08	+10
REA	UREA
1+.07	+55
FAT	UFAT
1-.006	+007

An outstanding producer backed by the best of the Gale and Miss Wix families by the high maternal Pathfinder Sire McCumber 124 Traveler 212.

This McCumber embryo donor has a progeny weaning ratio of 104 on four natural calves combined with progeny IMF and ultrasound ribeye

BECD	WECD	YEPD	MILK
+5.7	.40	+32	.37
+58	.33	+23	.20



Gale 045 Of McCumber - This fifth generation Pathfinder Dam is the grandam of Lot 45 and the dam of Lot 47.

Gale 948 Of McCumber - Lot 45

ratios of 109 and 105 respectively on six head to rank in the top two percent among current dams for Ultrasound Ribeye Area EPD. This cow produced a \$4,000 son in the 2006 McCumber Bull Sale to Schmaltz Ranch.

The grandam is the noted fifth generation Pathfinder Dam Gale 045 of McCumber whose many outstanding daughters include the Shady Brook donor Gale 473 of McCumber.

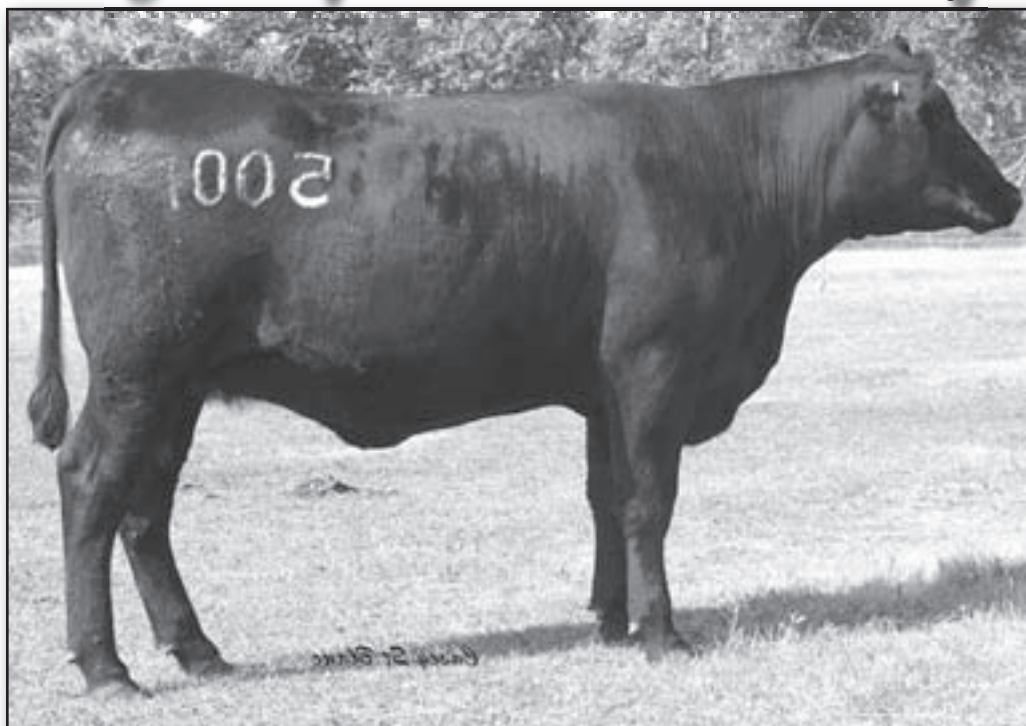
This cow is from the same family that also produced the top-selling bull of the 2005 McCumber Bull Sale and the second top-selling bull of the 2006 McCumber Bull Sale.

A granddaughter sells as Lot 46 and a maternal sister sells as Lot 47. Bred to calve February 28, 2007 to MCCUMBER 7078 VRD 3108 and exposed to him from May 12, 2006 to June 1, 2006. Exposed to LT TIMBERWOLF 5014 after June 1, 2006.



Gale 473 Of McCumber - Maternal sister to the dam of Lot 45 and Lot 47.

Gale of McCumber Family



Gale 5001 Of McCumber - Lot 45A

45A

GALE 5001 OF MC CUMBER

Birth Date: 2-9-2005

Cow +15198905

Tattoo: 5001

#N Bar Emulation EXT
Leachman Right Time
#11750711 Leachman Erica 0025

#Emulation N Bar 5522
N Bar Primrose 2424
#Tehama Bando 155
Leachman Erica 8058

#Mc Cumber 124 Traveler 212
Gale 948 of Mc Cumber
13354301 Gale 5101 of Mc Cumber

#Traveler 124 GDAR
#Miss Wix 365 of Mc Cumber
#Mc Cumber Rito 0054
#Gale 045 of Mc Cumber

CW	IMF
+2	
MARB	REA
+.01	+.09
REA	UREA
+.07	+.21
FAT	UFAT
+.009	+.015

SELLING BUYER'S CHOICE OF
LOTS 45A OR 45B.

BEPD	WEPD	YEPD	MILK
+.4.0	.05	+.38	.05
+.71	.05	+.21	.05

This bred heifer from the embryo program is by the \$160,000 Pathfinder Sire Leachman Right Time from a donor dam with a progeny weaning ratio of 104 on four natural calves coupled with progeny IMF and ultrasound ribeye ratios of 109 and 106 respectively on six head.

The grandam of this heifer is a maternal sister to the Shady Brook donor Gale 473 of McCumber descending from a third dam who is a fifth generation Pathfinder Dam.

Bred to calve January 18, 2007 to SINCLAIR EXTRA 4X13 and exposed to him after April 29, 2006.

45B

GALE 5011 OF MC CUMBER

Birth Date: 2-21-2005

Cow +15198906

Tattoo: 5011

#N Bar Emulation EXT
Leachman Right Time
#11750711 Leachman Erica 0025

#Emulation N Bar 5522
N Bar Primrose 2424
#Tehama Bando 155
Leachman Erica 8058

#Mc Cumber 124 Traveler 212
Gale 948 of Mc Cumber
13354301 Gale 5101 of Mc Cumber

#Traveler 124 GDAR
#Miss Wix 365 of Mc Cumber
#Mc Cumber Rito 0054
#Gale 045 of Mc Cumber

CW	IMF
+2	
MARB	REA
+.01	+.10
REA	UREA
+.07	+.43
FAT	UFAT
+.009	+.021

SELLING BUYER'S CHOICE OF
LOTS 45A OR 45B.

BEPD	WEPD	YEPD	MILK
+.4.0	.05	+.38	.05
+.71	.05	+.21	.05

Earning an individual IMF ratio of 109 and an individual ultrasound ribeye ratio of 107, this bred heifer is from an embryo flush by the Pathfinder Sire Leachman Right Time from a top-producing donor dam by the Pathfinder Sire McCumber 124 Traveler 212.

The dam of this female has a progeny weaning ratio of 104 on four natural calves along with progeny IMF and ultrasound ribeye ratios of 109 and 105 respectively on six head.

Bred to calve February 21, 2007 to SINCLAIR EXTRA 4X13 and exposed to him after April 29, 2006.

46

GALE 561 OF MC CUMBER

Birth Date: 1-30-2005

Cow 15050917

Tattoo: 561

#AAR New Trend
Boyd New Day 8005
+13050780 SVF Forever Lady 57D

#VDAR Shoshone 548
Donna AAR 74
#Leachman Right Time
+SVF Forever Lady 1128

+Mc Cumber Powertrain HC 1025
Gale 244 of Mc Cumber
14201151 Gale 948 of Mc Cumber

#PAPA Equator 2928
Rosetta 048 of Mc Cumber
#Mc Cumber 124 Traveler 212
Gale 5101 of Mc Cumber

IMF
+.09
UREA
+.51
UFAT
-.005

A granddaughter of the
McCumber embryo donor
featured as Lot 45.

BEPD	WEPD	YEPD	MILK
+.4.0	.38	+.48	.30
+.87	.28	+.23	.24

This bred heifer earned an individual IMF ratio of 119 while balancing an individual birth ratio of 98 with an individual weaning ratio of 103 and she ranks in the top ten percent among non-parent females for Ultrasound Ribeye Area EPD while ranking in the top 15 percent for both Weaning Weight EPD and Yearling Weight EPD.

Maternal sisters to the dam of this heifer are featured as Lots 45A and 45B.

Bred to calve February 27, 2007 to SINCLAIR EXTRA 4X13 and exposed to him after April 29, 2006.

47

GALE 8004 OF MC CUMBER

Birth Date: 2-17-1998

Cow +13110438

Tattoo: 8004

#Rito 054 GDAR
Mc Cumber 054 Rito 5009
+12381565 #Miss Wix 365 of Mc Cumber

#CSU Rito 4114
#Blackcap Forever 485 GDAR
#Shoshone 247 PJM
#Miss Wix 294 of Mc Cumber

#AAR New Trend
Gale 045 of Mc Cumber
#11478257 #Gale 783 of Mc Cumber

#VDAR Shoshone 548
Donna AAR 74
Mc Cumber Cash 435
#Gale 413 of Mc Cumber

IMF
+.07
UREA
+.36
UFAT
+.011

A maternal sister to both the

dam of the Shady Brook donor Gale 473 of McCumber and to the dam of the McCumber donor featured as Lot 45.

This cow earned a progeny IMF ratio of 106 and a progeny ultrasound ribeye ratio of 104 on five head after earning individual IMF and ultrasound ribeye ratios of 112 and 106 respectively from a fifth generation Pathfinder Dam with progeny weaning and yearling ratios of 109 on seven natural calves coupled with progeny IMF and ultrasound ribeye ratios of 108 and 106 respectively on 23 head.

Bred to calve January 19, 2007 to SINCLAIR EXTRA 4X13. Exposed to SITZ JLS EMULATION EXT 536P from May 12, 2006 to June 1, 2006. Exposed to LT TIMBERWOLF 5014 after June 1, 2006.

Gale of McCumber Family



Gale 839 Of McCumber - Lot 48



Gale 5127 Of McCumber - The dam of Lots 48 and 49.

48 GALE 839 OF MC CUMBER

Birth Date: 2-13-1998 Cow 13106369 Tattoo: 839

RR Ferdinand 758D
#12257225
#RR 9440 Scotch Cap 1483
Blackcap of RR 5367

Gale 5127 of Mc Cumber (FR)
12346475
054 PJM 1438
#Gale 607 of Mc Cumber

#RR Scotchcap 9440
Eriskay of Rollin Rock 8211
RR Vantage 3352
Blackcap of RR 0238

#Rito 054 GDAR
PJM Montana Power 196
#Traveler 1148 GDAR
#Gale 413 of Mc Cumber

IMF
+25
UREA
+0
UFAT
+013

Earning a progeny IMF ratio of 112 on five head after recording an individual IMF ratio of 140, this proven producer also balances a progeny birth ratio of 97 with a progeny weaning ratio of 102 on six calves and a progeny yearling ratio of 103 on five head backed by generations of top-producing females descending from a grandam who is a fourth generation Pathfinder Dam.

Gale 120 of McCumber, a Pathfinder daughter of this cow, produced the \$8,000 second top-selling bull of the 2006 McCumber Bull Sale, and a maternal brother to this cow was the \$12,000 top-selling bull of the 2005 McCumber Bull Sale.

Bred to calve January 17, 2007 to SAV 8180 TRAVELER 004. Exposed to SITZ JLS EMULATION EXT 536P from May 12, 2006 to June 1, 2006. Exposed to SINCLAIR EXTRA 4X13 after June 1, 2006.



Gale 120 Of McCumber - This Pathfinder grandam of Lot 50 is a daughter of Lot 48.

49 MC CUMBER 7078 VRD 5044

Birth Date: 3-21-2005 Cow +15170617 Tattoo: 5044

#Connealy Dateline
Vermilion Dateline 7078
#12810693
#Vermilion Blackbird 5044

Gale 5127 of Mc Cumber (FR)
12346475
054 PJM 1438
#Gale 607 of Mc Cumber

#DHD Traveler 6807
#Eila Eila of Conanga
#Leachman Right Time
Vermilion Blackbird 3525

#Rito 054 GDAR
PJM Montana Power 196
#Traveler 1148 GDAR
#Gale 413 of Mc Cumber

IMF
+05
UREA
+27
UFAT
+005

This bred heifer by the high-performance Pathfinder Sire know as VRD earned an individual IMF ratio of 109 from a donor dam who balances a progeny birth ratio of 97 with progeny weaning and yearling ratios of 102 and 103 respectively on eight natural calves along with progeny IMF and ultrasound ribeye ratios of 110 and 103 respectively on ten head, stemming from a grandam who is a fourth generation Pathfinder Dam.

A maternal brother was the \$12,000 top-selling bull of the 2005 McCumber Bull Sale to Hills View Angus Ranch of South Dakota. Bred to calve February 12, 2007 to SINCLAIR EXTRA 4X13 and exposed to him from April 29, 2006 to June 1, 2006. Exposed to SITZ JLS EMULATION EXT 536P after June 1, 2006.

50 GALE 5156 OF MC CUMBER

Birth Date: 2-21-2005 Cow 15050840 Tattoo: 5156

#Leachman Right Time
MC Cumber Tradition 383
14667477
+Lassie 7015 of Mc Cumber

Gale 307 of Mc Cumber
14443300
White Oak Precise 6002
#Gale 120 of Mc Cumber

#N Bar Emulation EXT
Leachman Erica 0025
#Mc Cumber 124 Traveler 212
#Lassie 648 of Mc Cumber

#GAR Precision 1680
Stone Gate Jessie
+Mc Cumber Foundation 701
Gale 839 of Mc Cumber

IMF
+19
UREA
+08
UFAT
+019

A granddaughter of the Pathfinder Dam Gale 120 of McCumber who balances a progeny birth ratio of 98 with progeny weaning and yearling ratios of 105 and a progeny IMF ratio of 123 on her first three calves, stemming from a third dam who is featured in this sale as Lot 48.

McCumber 2700 RT Time 582, a maternal brother to the dam of this heifer, was the \$8,000 second top-selling bull of the 2006 McCumber Bull Sale to Haugen Cattle Company of Hannaford, North Dakota. Exposed to SINCLAIR EXTRA 4X13 from April 29, 2006 to June 1, 2006. Exposed to LT TIMBERWOLF 5014 after June 1, 2006.

Gale of McCumber Family



Gale 9120 Of McCumber - Lot 51

51

GALE 9120 OF MC CUMBER

Birth Date: 2-24-1999

Cow 13364144

Tattoo: 9120

#+Mc Cumber 124 Traveler 212
Mc Cumber Foundation 701
 +12829263
 Miss Wix 235 of Mc Cumber

#Traveler 124 GDAR
 #Miss Wix 365 of Mc Cumber
 #Shoshone Viking GD60 (GDF)
 #Miss Wix 117 of Mc Cumber

IMF
-.03
UREA
-.22
UFAT
+.031

Mc Cumber 054 Rito 326
Gale 6169 of Mc Cumber
 12578670
 #Gale 607 of Mc Cumber

#Rito 054 GDAR
 #Miss Wix 365 of Mc Cumber
 #Traveler 1148 GDAR
 #Gale 413 of Mc Cumber

An impressive female blending the Gale and Miss Wix families by the proven sire of McCumber Foundation 701 stemming from a grandam who is a fourth generation Pathfinder Dam.

This cow has progeny weaning and yearling ratios of 100 and 104 respectively on five calves.

Bred to calve February 4, 2007 to SITZ JLS EMULATION EXT 536P and exposed to him from May 12, 2006 to June 1, 2006. Exposed to LT TIMBERWOLF 5014 after June 1, 2006.

BEPD	WEPD	YEPD	MILK
+3.3	.42 +20	.39 +43	.37 +22 .21



McCumber 8005 New Day 453 - This maternal brother to Lots 48 and 49 was the \$12,000 top-selling bull of the 2005 McCumber Bull Sale.

52

GALE 7182 OF MC CUMBER

Birth Date: 5-6-1997

Cow 12823428

Tattoo: 7182

#Rito 054 GDAR
Mc Cumber 054 Rito 326
 12040302
 #Miss Wix 365 of Mc Cumber

#CSU Rito 4114
 #Blackcap Forever 485 GDAR
 #Shoshone 247 PJM
 #Miss Wix 294 of Mc Cumber

IMF
1+.09
UREA
1-.13
UFAT
1+.018

#Traveler 1148 GDAR
Gale 607 of Mc Cumber
 #10870881
 #Gale 413 of Mc Cumber

#QAS Traveler 23-4
 #Blackcap Forever 485 GDAR
 Mc Cumber Shannon 216
 #Gale 256 of Mc Cumber

A proven producer blending the Gale and Miss Wix families sired by a full brother to Miss Wix 903 of McCumber.

The fourth generation Pathfinder Dam of this cow combines a progeny birth ratio of 94 with a progeny weaning ratio of 103 on nine calves carrying on a low birth weight family.

Bred to calve January 24, 2007 to MCCUMBER TRADITION 383. Exposed to SITZ JLS EMULATION EXT 536P from May 12, 2006 to June 1, 2006. Exposed to LT TIMBERWOLF 5014 after June 1, 2006.

BEPD	WEPD	YEPD	MILK
+2	.24 +8	.23 +20	.23 +19 .08



McCumber 2700 RT Time 582 - This grandson of Lot 48 was the \$8,000 second top-selling bull of the 2006 McCumber Bull Sale.

Gale



Gale 836 Of Mc Cumber - Lot 53

53 GALE 836 OF MC CUMBER

Birth Date: 2-12-1998

Cow 13103366

Tattoo: 836

#+VDAR Lucys Boy
Circle Oak Lucys Boy 625
+12616485
#Homestretch Miss Wix 299

#Traveler 1148 GDAR
+VDAR Pine Drive Lucy 5
#Traveler 124 GDAR
#Miss Wix 365 of Mc Cumber

IMF
+27
UREA
+02
UFAT
+023

Mc Cumber 054 Rito 326
Gale 6129 of Mc Cumber
12578655
#Gale 413 of Mc Cumber

#Rito 054 GDAR
#Miss Wix 365 of Mc Cumber
Mc Cumber Shannon 216
#Gale 256 of Mc Cumber

The dam of McCumber 7078

VRD 3116 who was an \$11,000 feature of the 2004 McCumber Bull Sale to Sweiger Ranch with daughters selling in this sale.

This cow records progeny weaning and yearling ratios of 104 and 102 respectively on five calves along with progeny IMF and ultrasound ribeye ratios of 110 and 104 respectively on seven head after earning an individual IMF ratio of 124.

The grandam is a fourth generation Pathfinder Dam.

Bred to calve February 4, 2007 to MCCUMBER TRADITION 383. Exposed to SITZ JLS EMULATION EXT 536P from May 12, 2006 to June 1, 2006. Exposed to LT TIMBERWOLF 5014 after June 1, 2006.

BEPD	WEPD	YEPD	MILK
+2.0	.42	+23	.40
			+45
			.39
			+27
			.22

54 GALE 8124 OF MC CUMBER

Birth Date: 3-19-1998

Cow 13103412

Tattoo: 8124

#PAPA Equator 2928
Mc Cumber Equator 6122
12578652
#Miss Wix 365 of Mc Cumber

#+PAPA Power 096
#PAPA Envious Blackbird 8849
#Shoshone 247 PJM
#Miss Wix 294 of Mc Cumber

CW
+9
MARB
IMF
+07
REA
UREA
+18
FAT
UFAT
+006
+002

#VDAR New Trend 315
Gale 229 of Mc Cumber
11824659
#Gale 413 of Mc Cumber

#AAR New Trend
#VDAR Lucy 704
Mc Cumber Shannon 216
#Gale 256 of Mc Cumber

A proven producer blending the Gale and Miss Wix families

by the Accelerated Genetics Sire McCumber Equator 6122.

The grandam of this cow is a fourth generation Pathfinder Dam.

Bred to calve February 21, 2007 to SITZ JLS EMULATION EXT 536P. Exposed to SINCLAIR EXTRA 4X13 after June 1, 2006.

BEPD	WEPD	YEPD	MILK
+2.8	.43	+35	.40
			+68
			.30
			+20
			.23



Gale 8124 Of Mc Cumber - Lot 54

Blackcap



McCumber 383 Tradition 549 - \$7,500 son of Lot 55.

55 BLACKCAP 807 OF MC CUMBER

Birth Date: 1-29-1998

Cow 13103345

Tattoo: 807

#VDAR Rito 953
Mc Cumber 953 Rito 420
#12172466
#Gale 607 of Mc Cumber

#Rito 2100 GDAR
Miss Wix 903 of Mc Cumber
#Traveler 1148 GDAR
#Gale 413 of Mc Cumber

IMF
-15
UREA
+46
UFAT
-011

#+Mc Cumber 124 Traveler 212
Blackcap 631 of Mc Cumber
#12578612
#Blackcap 231 of Mc Cumber

#Traveler 124 GDAR
#Miss Wix 365 of Mc Cumber
#AAR New Trend
Blackcap 013 of Mc Cumber

The dam of McCumber 383

Tradition 549 who sold two-thirds interest for \$7,500 as the third top-selling bull of the 2006 McCumber Bull Sale to Reich Angus Ranch of Zap, North Dakota.

This cow has a progeny weaning ratio of 107 combined with progeny yearling and ultrasound ribeye ratios of 103 and 105 respectively on five calves produced from an outstanding second generation Pathfinder Dam who was a feature of the 2003 McCumber Female Sale to Briarwood Farms of Missouri.

Bred to calve January 17, 2007 to MCCUMBER TRADITION 383. Exposed to SITZ JLS EMULATION EXT 536P from May 12, 2006 to June 1, 2006. Exposed to SINCLAIR EXTRA 4X13 after June 1, 2006.

BEPD	WEPD	YEPD	MILK
+7	.42	+28	.39
			+47
			.38
			+31
			.22

56 BLACKCAP 5015 OF MC CUMBER

Birth Date: 3-7-2005

Cow +15050767

Tattoo: 5015

#GAR Precision 1680
CA Future Direction 5321
12493607
CA Miss Power Fix 308

#Tehama Bando 155
9J9 GAR 856
#+SAF Power Fix
CA Lady Eight 1015

CW
+10
MARB
IMF
+25
REA
UREA
+48
FAT
UFAT
+002
-010

#+Mc Cumber 124 Traveler 212
Blackcap 631 of Mc Cumber
#12578612
#Blackcap 231 of Mc Cumber

#Traveler 124 GDAR
#Miss Wix 365 of Mc Cumber
#AAR New Trend
Blackcap 013 of Mc Cumber

A special attraction bred heifer

from the embryo program by the Genex/CRI ultrasound leader CA Future Direction 5321 from a second generation Pathfinder Dam with a progeny weaning ratio of 102 on seven calves and a progeny yearling ratio of 102 on five head who sold as a feature of the 2003 McCumber Female Sale to Briarwood Farms of Missouri.

Four maternal sisters post a collective progeny weaning ratio of 105. Exposed to SINCLAIR EXTRA 4X13 from April 29, 2006 to June 1, 2006. Exposed to LT TIMBERWOLF 5014 after June 1, 2006.

BEPD	WEPD	YEPD	MILK
+2.6	.05	+33	.05
			+61
			.05
			+29
			.05



Blackcap 631 Of Mc Cumber - The dam of Lot 56.

Blackcap of McCumber Family



57 BLACKCAP 557 of Mc Cumber

Birth Date: 1-29-2005

Cow 15050913

Tattoo: 557

#Connealy Dateline
Vermilion Dateline 7078
#12810693 #Vermilion Blackbird 5044

#DHD Traveler 6807
#Eila Eila of Conanga
#Leachman Right Time
Vermilion Blackbird 3525

+Pine Creek Right Time 1147
Blackcap 267 of Mc Cumber
14211691 Blackcap 0197 of Mc Cumber

#Leachman Right Time
Sitz Everelda Entense 1137
+Circle Oak Lucys Boy 625
Blackcap 807 of Mc Cumber

IMF
- .09
UREA
+ .64
UFAT
+ .001

A high-performing bred heifer with an individual weaning

ratio of 121 and an individual yearling ratio of 124 coupled with individual IMF and ultrasound ribeye ratios of 101 and 117 respectively to rank in the top one percent among non-parent females for Weaning Weight EPD and Yearling Weight EPD with an Ultrasound Ribeye Area EPD in the top four percent.

The dam of this heifer has progeny weaning and yearling ratios of 111 and 113 respectively combined with a progeny ultrasound ribeye ratio of 113 on her first two calves.

This female ranks first in this sale offering for Yearling Weight EPD and Ultrasound Ribeye Area EPD, also tying for the top Weaning Weight EPD.

Bred to calve February 11, 2007 to SINCLAIR EXTRA 4X13 and exposed to him after April 29, 2006.

BEPD	WEPD	YEPD	MILK
+5.4	.38	+58	.30
+106	.28	+23	.25

58 BLACKCAP 772 of Mc Cumber

Birth Date: 2-23-1997

Cow 12823359

Tattoo: 772

#Traveler 124 GDAR
Mc Cumber 124 Traveler 212
#11824721 #Miss Wix 365 of Mc Cumber

#QAS Traveler 23-4
Rachel Rito 813 GDAR
#Shoshone 247 PJM
#Miss Wix 294 of Mc Cumber

#Rito 054 GDAR
Blackcap 024 of Mc Cumber
11485875 Blackcap 013 of Mc Cumber

#CSU Rito 4114
#Blackcap Forever 485 GDAR
#Shoshone Viking GD60 (GDF)
#Miss Forever 4156 GDAR

CW
1-5
MARB
1+.05
REA
1+.06
FAT
1-.004
UFAT
+ .010

A blending of the proven Blackcap and Miss Wix families by the Pathfinder Sire McCumber 124 Traveler 212 with a progeny IMF ratio of 103 on five head.

This cow is from the same family that produced the legendary high maternal Pathfinder Sire Candolier Forever 376.

Bred to calve March 2, 2007 to SITZ JLS EMULATION EXT 536P and exposed to him from May 12, 2006 to June 1, 2006. Exposed to LT TIMBERWOLF 5014 after June 1, 2006.

BEPD	WEPD	YEPD	MILK
+4.0	.44	+23	.41
+39	.35	+21	.24

Blackcap 557 Of McCumber - Lot 57

58A BLACKCAP 566 of Mc Cumber

Birth Date: 1-31-2005

Cow 15050921

Tattoo: 566

MC Cumber 7078 VRD 3116
14443308 Gale 836 of Mc Cumber

#Vermilion Dateline 7078

#Connealy Dateline
#Vermilion Blackbird 5044
+Circle Oak Lucys Boy 625
Gale 6129 of Mc Cumber

#+Mc Cumber 124 Traveler 212
Blackcap 772 of Mc Cumber
12823359 Blackcap 024 of Mc Cumber

#Traveler 124 GDAR
#Miss Wix 365 of Mc Cumber
#Rito 054 GDAR
Blackcap 013 of Mc Cumber

IMF
+ .20
UREA
+ .19
UFAT
+ .019

Earning an individual IMF ratio of 120 combined with

an ultrasound ribeye ratio of 103 and individual weaning and yearling ratios of 103, this bred heifer is from the heart of the McCumber program blending the performance of the Pathfinder Sire Vermilion Dateline 7078 with the maternal strength of the Pathfinder Sire McCumber 124 Traveler 212.

This heifer blends the Blackcap, Gale and Miss Wix families. Bred to calve February 2, 2007 to SINCLAIR EXTRA 4X13 and exposed to him after April 29, 2006.

BEPD	WEPD	YEPD	MILK
+4.7	.38	+41	.31
+69	.28	+22	.11



Blackcap 566 Of McCumber - Lot 58A

Blackcap of McCumber Family



Blackcap 738 Of McCumber - Lot 59



Blackcap 339 Of McCumber - The Pathfinder Dam of Lot 59.

59

BLACKCAP 738 OF MC CUMBER

Birth Date: 2-11-1997

Cow 12827748

Tattoo: 738

#Rito 054 GDAR
#CSU Rito 4114
#Blackcap Forever 485 GDAR
#Shoshone 247 PJM
#Miss Wix 294 of McCumber

#KMA Highroller 5025
#Miss Wix 365 of McCumber
#Blackcap 339 of McCumber
#12040244

Highroller 9354 of RR 2300
Erica Lassie KMA 2003
McCumber Viking 176
Blackcap 013 of McCumber

IMF
+02
UREA
-39
UFAT
+010

A blending of the time-tested Blackcap and Miss Wix families sired by a full brother to Miss Wix 903 of McCumber from a Pathfinder Dam with a progeny weaning ratio of 105 on six calves and a progeny IMF ratio of 111 on three head.

This female is from the same family that produced the legendary high maternal Pathfinder Sire Candolier Forever 376.

Bred to calve January 29, 2007 to MCCUMBER TRADITION 383. Exposed to SITZ JLS EMULATION EXT 536P from May 12, 2006 to June 1, 2006. Exposed to LT TIMBERWOLF 5014 after June 1, 2006.



Blackcap 5126 Of McCumber - The grandam of Lot 61.

60

BLACKCAP 918 OF MC CUMBER

Birth Date: 2-2-1999

Cow 13354291

Tattoo: 918

#VDAR Rito 953
#Miss Wix 903 of McCumber
#Traveler 1148 GDAR
#Gale 413 of McCumber

+McCumber 054 Rito 5009
#Blackcap 738 of McCumber
#Blackcap 339 of McCumber

#Rito 2100 GDAR
#Miss Wix 365 of McCumber
#KMA Highroller 5025
#Blackcap 398 of McCumber

IMF
+0
UREA
-40
UFAT
+005

Earning a progeny IMF ratio of 121 coupled with progeny weaning and yearling ratios of 103 and 101 respectively on five calves, this proven producer is a daughter of Lot 59 from the family that produced the high maternal Pathfinder Sire Candolier Forever 376.

The grandam is the noted Pathfinder Dam Blackcap 339 of McCumber. Bred to calve January 17, 2007 to SAV 8180 TRAVELER 004. Exposed to SITZ JLS EMULATION EXT 536P from May 12, 2006 to June 1, 2006. Exposed to SINCLAIR EXTRA 4X13 after June 1, 2006.

61

BLACKCAP 5208 OF MC CUMBER

Birth Date: 4-2-2005

Cow 15170633

Tattoo: 5208

#AAR New Trend
#BT Everelda Entense 57D
#Blackcap 3110 of McCumber
#Blackcap 5126 of McCumber

#AAR New Trend
#BT Everelda Entense 57D
#McCumber 054 Rito 326
#Blackcap 231 of McCumber

IMF
+11
UREA
-30
UFAT
-019

A granddaughter of the noted Blackcap 5126 of McCumber featured in the 2003 McCumber Female Sale.

This bred heifer is the result of an unique sire/daughter mating with the McCumber herd sire BT New Trend 172K.

Exposed to SINCLAIR EXTRA 4X13 from April 29, 2006 to June 1, 2006. Exposed to LT TIMBERWOLF 5014 after June 1, 2006.

Blackcap of Mc Cumber Family

62 BLACKCAP 535 of Mc CUMBER

Birth Date: 1-24-2005

Cow 15050891

Tattoo: 535

#Leachman Right Time
BT Right Time 24J
+13360311 Sitz Everelda Entense 1905

#N Bar Emulation EXT
Leachman Erica 0025
#Traveler 124 GDAR
#Sitz Everelda Entense 1791

IMF
+02
UREA
+34
UFAT
+017

Mc Cumber 6122 Equator 8113
Blackcap 394 of Mc Cumber
14442630 Blackcap 088 of Mc Cumber

Mc Cumber Equator 6122
Rosetta 421 of Mc Cumber
#Mr Wix of Mc Cumber 204
Blackcap 5126 of Mc Cumber

A bred heifer by the

Accelerated Genetics Sire BT Right Time 24J with individual weaning and yearling ratios of 108 and 107 respectively combined with individual IMF and ultrasound ribeye ratios of 104 and 102 respectively produced as the first calf from a two-year-old dam.

This heifer descends from a third dam who was a feature of the 2003 McCumber Female Sale.

Bred to calve March 19, 2007 to SINCLAIR EXTRA 4X13 and exposed to him after April 12, 2006.

BEPD	WEPD	YEPP	MILK
+3.2	.37	+45	.30
+79	.27	+24	.21



Blackcap 9128 Of Mc Cumber - Lot 66

66 BLACKCAP 9128 of Mc CUMBER

Birth Date: 2-27-1999

Cow 13388550

Tattoo: 9128

#AAR New Trend
MC Cumber New Trend 1206
+14201196 +Miss Wix 705 of Mc Cumber

#VDAR Shoshone 548
Donna AAR 74
#Mc Cumber 124 Traveler 212
Miss Wix 235 of Mc Cumber

IMF
+02
UREA
+0
UFAT
-020

GDAR Seven Eleven 0157
Blackcap 7137 of Mc Cumber
12823392 Blackcap 469 of Mc Cumber

#GDAR Oscar 711
LT Blackcap Lady 216 GDAR
#Mc Cumber 124 Traveler 212
Blackcap 624 of Mc Cumber

A blending of the Miss Wix and Blackcap families sired by McCumber New Trend 1206.

The dam of this female has a progeny IMF ratio of 104 on four head.

Bred to calve February 24, 2007 to SINCLAIR EXTRA 4X13 and exposed to him from April 29, 2006 to June 1, 2006. Exposed to LT TIMBERWOLF 5014 after June 1, 2006.

BEPD	WEPD	YEPP	MILK
+2.6	.38	+5	.31
+23	.27	+14	.11

66 BLACKCAP 9128 of Mc CUMBER

#Tehama Bando 155
Mr Wix of Mc Cumber 204
#12177814 +Miss Wix 204 of Mc Cumber

#Band 234 of Ideal 3163
Tehama Blackcap G373
#Traveler 124 GDAR
#Miss Wix 365 of Mc Cumber

CW
I-2
MARB
IMF
I+15
REA
UREA
I-12
FAT
UFAT
I+004
+010

#Mc Cumber Rito 0054
Blackcap 306 of Mc Cumber
12040232 Blackcap 03 of Mc Cumber

#Rito 054 GDAR
Rosetta 015 of Mc Cumber
#Mc Cumber Stretch 604
Blackcap 846 of Mc Cumber

A proven producer by the high maternal Pathfinder Sire

Mr Wix of McCumber 204 from a dam backed by the high maternal Pathfinder Sires McCumber Rito 0054 and McCumber Stretch 604.

This cow has a progeny IMF ratio of 104 from a dam with a progeny weaning ratio of 102 on eight calves.

Bred to calve January 28, 2007 to SAV 8180 TRAVELER 004. Exposed to SITZ JLS EMULATION EXT 536P from May 12, 2006 to June 1, 2006. Exposed to SINCLAIR EXTRA 4X13 after June 1, 2006.

BEPD	WEPD	YEPP	MILK
+2.6	.42	+30	.39
+53	.36	+20	.22

67 BLACKCAP 8133 of Mc CUMBER

Birth Date: 3-23-1998

Cow 13103419

Tattoo: 8133

#Tehama Bando 155
MC Cumber Classic 202
+14208279 #Miss Wix 365 of Mc Cumber

#Band 234 of Ideal 3163
Tehama Blackcap G373
#Shoshone 247 PJM
#Miss Wix 294 of Mc Cumber

IMF
+12
UREA
+11
UFAT
-019

+BT New Trend 172K
Blackcap 291 of Mc Cumber
14201189 Blackcap 620 of Mc Cumber

#AAR New Trend
+BT Everelda Entense 57D
#Mc Cumber 124 Traveler 212
Blackcap 024 of Mc Cumber

A bred heifer by the \$39,000 McCumber Classic 202.

The dam of this female contributes the maternal strength of the Pathfinder Sires AAR New Trend and McCumber 124 Traveler 212.

Bred to calve February 1, 2007 to MCCUMBER 004 TRAVELER 513. Exposed to SINCLAIR EXTRA 4X13 from April 29, 2006 to June 1, 2006. Exposed to LT TIMBERWOLF 5014 after June 1, 2006.

BEPD	WEPD	YEPP	MILK
+2.3	.37	+26	.29
+41	.26	+26	.10

#PAPA Equator 2928
Mc Cumber Powertrain HC 1025
+12458563 Rosetta 048 of Mc Cumber

#PAPA Power 096
#PAPA Envious Blackbird 8849
#Rito 054 GDAR
Rosetta 405 of Mc Cumber

IMF
+0
UREA
-11
UFAT
+023

#Tehama Bando 155
Blackcap 437 of Mc Cumber
12166131 #Blackcap 293 of Mc Cumber

#Band 234 of Ideal 3163
Tehama Blackcap G373
054 PJM 1438
Blackcap 748 of Mc Cumber

This proven producer blends the Blackcap and Rosetta families sired by McCumber Powertrain HC 1025.

The grandam of this cow is a Pathfinder Dam.

Bred to calve February 27, 2007 to SAV 8180 TRAVELER 004. Exposed to SINCLAIR EXTRA 4X13 after June 1, 2006.

BEPD	WEPD	YEPP	MILK
+3.5	.43	+43	.40
+73	.35	+22	.23



Blackcap 8133 Of Mc Cumber - Lot 67

65 BLACKCAP 5199 of Mc CUMBER

Birth Date: 3-27-2005

Cow 15170625

Tattoo: 5199

#Tehama Bando 155
MC Cumber 155 Bando 214
+14208281 #Miss Wix 365 of Mc Cumber

#Band 234 of Ideal 3163
Tehama Blackcap G373
#Shoshone 247 PJM
#Miss Wix 294 of Mc Cumber

IMF
+13
UREA
-13
UFAT
+008

#Vermilion Dateline 7078
Blackcap 372 of Mc Cumber
14443338 Blackcap 918 of Mc Cumber

#Connealy Dateline
#Vermilion Blackbird 5044
#Mc Cumber 953 Rito 420
Blackcap 738 of Mc Cumber

This bred heifer is sired by a flush brother to the \$39,000

McCumber Classic 202 produced from a dam by the high-performance Pathfinder Sire known as VRD.

This female earned an individual IMF ratio of 107 as her dam's first calf. Bred to calve February 2, 2007 to MCCUMBER 004 TRAVELER 513.

Exposed to SINCLAIR EXTRA 4X13 after April 29, 2006.

BEPD	WEPD	YEPP	MILK
+1.6	.37	+27	.29
+56	.26	+19	.10

Rosetta of McCumber Family



Casey St. Blanc

Rosetta 9003 Of McCumber - Lot 68

68 ROSETTA 9003 of Mc CUMBER

Birth Date: 2-28-1999

Cow +13365329

Tattoo: 9003

RR Scotchcap 9440
#11293310

#Scotch Cap
Blackcap of RR 5367

Rosetta 405 of Mc Cumber
10623782

#Shoshone 247 PJM
#Rosetta 148 of Mc Cumber

#PS Power Play (GDF)
#Hoff Band 07 of SC 509
RR Vantage 3352
Blackcap of RR 0238

#Schearbrook Shoshone
Juanada 104 of PJM
#Shoshone Viking GD60 (GDF)
Rosetta 418 of Mc Cumber

CW	IMF
1+4	
MARB	REA
1+01	-04
FAT	UFAT
1-10	-40
1+028	+014

This proven producer from the embryo program balances a progeny birth ratio of 97 with progeny weaning and yearling ratios of 102 and 105 respectively on five calves from a donor dam with a progeny birth ratio of 95 combined with a progeny weaning ratio of 105 on eight natural calves, stemming from a Pathfinder granddam.

This cow is a maternal sister to the high maternal Pathfinder Sire McCumber Stretch 604 and the noted Rosetta 048 of McCumber who in turn produced McCumber Powertrain HC 1025.

Bred to calf February 28, 2007 to MCCUMBER 7078 VRD 3108 and exposed to him from May 12, 2006 to June 1, 2006. Exposed to LT TIMBERWOLF 5014 after June 1, 2006.

BEPD	WEPD	YEPD	MILK
+2.5	.32	+32	.31
+62	.30	+18	.15



Rosetta 048 Of McCumber - Maternal sister to Lot 68.

69 ROSETTA 850 of Mc CUMBER

Birth Date: 2-16-1998

Cow 13103372

Tattoo: 850

California Traveler
#11618614

#RR Traveler 5204
#Tehama Eisa Erica Y699

Rosetta 6003 of Mc Cumber
#+12578643

#CH 054 Rito 0100
Rosetta 405 of Mc Cumber

#QAS Traveler 23-4
Eriskay of Rollin Rock 3302
#Paramont Ambush 2172
#Tehama Eisa Erica W602

#Rito 054 GDAR
#Blackbird of CH 7009
#Shoshone 247 PJM
#Rosetta 148 of Mc Cumber

CW	IMF
1+1	
MARB	REA
1+21	+23
FAT	UFAT
1-14	-23
1+011	+011

A granddaughter of the noted Rosetta 405 of McCumber by the Pathfinder Sire California Traveler.

This solid producing female has a progeny weaning ratio of 100 on six calves and a progeny yearling ratio of 102 on four head combined with a progeny IMF ratio of 108 on five head after earning an individual IMF ratio of 124.

The Pathfinder Dam of this cow records progeny weaning and yearling ratios of 115 and 107 respectively on three calves combined with progeny IMF and ultrasound ribeye ratios of 118 and 107 respectively on three head.

Bred to calf February 4, 2007 to SITZ JLS EMULATION EXT 536P and exposed to him from May 12, 2006 to June 1, 2006. Exposed to LT TIMBERWOLF 5014 after June 1, 2006.

BEPD	WEPD	YEPD	MILK
+2.0	.42	+28	.39
+56	.34	+24	.22



McCumber Stretch 604 - Maternal brother to Lot 68.

Rosetta of McCumber Family



Rosetta 421 Of McCumber - The dam of Lot 70.



Rosetta 131 Of McCumber - From the same family as Lots 68 through 74.

70 ROSETTA 5004 of Mc CUMBER

Birth Date: 2-15-2005

Cow +15050760

Tattoo: 5004

#Connealy Dateline
#Vermilion Dateline 7078
#12810693 #Vermilion Blackbird 5044

#DHD Traveler 6807
#Ella Ella of Conanga
#Leachman Right Time
Vermilion Blackbird 3525

#Tehama Bando 155
Rosetta 421 of Mc Cumber
12166128 Rosetta 297 of Mc Cumber

#Band 234 of Ideal 3163
Tehama Blackcap G373
054 PJM 1438
Rosetta 405 of Mc Cumber

CW	
IMF	
MARB	
REA	
UREA	
FAT	
UFAT	
MILK	

A bred heifer from the embryo program by the high-performance Pathfinder Sire known as VRD.

The donor dam of this female is a tremendous daughter of the Pathfinder Sire Tehama Bando 155 balancing a progeny birth ratio of 97 with a progeny weaning ratio of 106 and a progeny yearling ratio of 109 coupled with a progeny ultrasound ribeye ratio of 103 on three natural calves.

The grandam is a maternal sister to McCumber Stretch 604 and the noted Rosetta 048 of McCumber.

Bred to calve January 23, 2007 to SINCLAIR EXTRA 4X13 and exposed to him after April 29, 2006.

BEPD	WEPD	YEPD	MILK
1+3.5	.05	1+45	.05

71 ROSETTA 949 of Mc CUMBER

Birth Date: 2-10-1999

Cow 13354302

Tattoo: 949

#Tehama Bando 155
Mr Wix of Mc Cumber 204
#12177814 +Miss Wix 204 of Mc Cumber

#Band 234 of Ideal 3163
Tehama Blackcap G373
#Traveler 124 GDAR
#Miss Wix 365 of Mc Cumber

054 PJM 1438
Rosetta 297 of Mc Cumber
11824658 Rosetta 405 of Mc Cumber

#Rito 054 GDAR
PJM Montana Power 196
#Shoshone 247 PJM
#Rosetta 148 of Mc Cumber

IMF	
UREA	
UFAT	
MILK	

A proven producer by the high maternal Pathfinder Sire Mr Wix of McCumber 204.

This cow is a granddaughter of the noted Rosetta 405 of McCumber who produced the high maternal Pathfinder Sire McCumber Stretch 604 and the noted Rosetta 048 of McCumber.

Bred to calve January 26, 2007 to MCCUMBER TRADITION 383. Exposed to SITZ JLS EMULATION EXT 536P from May 12, 2006 to June 1, 2006. Exposed to LT TIMBERWOLF 5014 after June 1, 2006.

BEPD	WEPD	YEPD	MILK
+2.3	.40	+27	.37



Rosetta 516 Of McCumber - Lot 71A

71A ROSETTA 516 of Mc CUMBER

Birth Date: 1-19-2005

Cow 15050844

Tattoo: 516

#AAR New Trend
Boyd New Day 8005
+13050780 SVF Forever Lady 57D

#VDAR Shoshone 548
Donna AAR 74
#Leachman Right Time
+SVF Forever Lady 1128

#Mr Wix of Mc Cumber 204
Rosetta 949 of Mc Cumber
13354302 Rosetta 297 of Mc Cumber

#Tehama Bando 155
+Miss Wix 204 of Mc Cumber
054 PJM 1438
Rosetta 405 of Mc Cumber

CW	
IMF	
MARB	
REA	
UREA	
FAT	
UFAT	
MILK	

A bred heifer by the now-deceased Genex/CRI Sire

Boyd New Day 8005 with a very modest individual birth ratio of 85 combined with an individual weaning ratio of 101 and an individual ultrasound ribeye ratio of 105 carrying on a low birth weight branch of the Rosetta family from a dam by the ABS Global Pathfinder Sire Mr Wix of McCumber 204.

This female is from the same branch of the Rosetta family that produced the Pathfinder Sire McCumber Stretch 604.

Bred to calve January 18, 2007 to MCCUMBER 004 TRAVELER 513. Exposed to SINCLAIR EXTRA 4X13 after April 29, 2006.

BEPD	WEPD	YEPD	MILK
+1.4	.38	+41	.31

72 ROSETTA 5119 of Mc CUMBER

Birth Date: 2-11-2005

Cow 15050802

Tattoo: 5119

#Vermilion Dateline 7078
MC Cumber 7078 VRD 3116
14443308 Gale 836 of Mc Cumber

#Connealy Dateline
#Vermilion Blackbird 5044
+Circle Oak Lucys Boy 625
Gale 6129 of Mc Cumber

+BT New Trend 172K
Rosetta 294 of Mc Cumber
14201192 Rosetta 849 of Mc Cumber

#AAR New Trend
+BT Everelda Entense 57D
#GDAR Band 477
#Rosetta 541 of Mc Cumber

IMF	
UREA	
UFAT	
MILK	

This high-performing bred heifer has an individual weaning

ratio of 107 and an individual yearling ratio of 106 along with an individual ultrasound ribeye ratio of 106 from a dam who records progeny weaning and yearling ratios of 112 and 109 respectively coupled with a progeny ultrasound ribeye ratio of 115 on her first two calves.

The third dam is a Pathfinder Dam.

Bred to calve January 26, 2007 to SINCLAIR EXTRA 4X13 and exposed to him after April 29, 2006.

BEPD	WEPD	YEPD	MILK
+4.5	.37	+46	.30



Rosetta 5119 Of McCumber - Lot 72

Rosetta



Rosetta 961 Of Mc Cumber - Lot 73

73 ROSETTA 961 OF MC CUMBER

Birth Date: 2-11-1999 Cow 13388542 Tattoo: 961

#Tehama Bando 155 #Band 234 of Ideal 3163
Mr Wix of Mc Cumber 204 Tehama Blackcap G373
#12177814 +Miss Wix 204 of Mc Cumber #Traveler 124 GDAR
#Miss Wix 365 of Mc Cumber

054 PJM 1438 #Rito 054 GDAR
Rosetta 4117 of Mc Cumber PJM Montana Power 196
#12166150 Rosetta 818 of Mc Cumber #Rito 2100 GDAR
#Rosetta 206 of Mc Cumber

IMF
+05
UREA
-27
UFAT
-.012

A blending of the time-tested Miss Wix and Rosetta families by the ABS Global high maternal Pathfinder Sire Mr Wix of Mc Cumber 204 with a progeny IMF ratio of 107 on five head. The Pathfinder Dam of this cow earned a progeny weaning ratio of 106 on eight calves.

Bred to calve March 10, 2007 to LT TIMBERWOLF 5014 and exposed to him after June 1, 2006.

74 ROSETTA 849 OF MC CUMBER

Birth Date: 2-16-1998 Cow 13110898 Tattoo: 849

#Tehama Band 207 #Band 116 of Ideal 2118 7174
GDAR Band 477 Tehama Entella H501
#12191006 #GDAR Blackcap Lad 927 #Mc Cumber Stretch 604
GDAR Blackcap Lady 761

IMF
-29
UREA
+42
UFAT
+014

#+Mc Cumber 124 Traveler 212 #Traveler 124 GDAR
Rosetta 541 of Mc Cumber #Miss Wix 365 of Mc Cumber
#12346453 Rosetta 812 of Mc Cumber #Rito 2100 GDAR
Rosetta 228 of Mc Cumber

This proven producer has a progeny weaning ratio of 106 and a progeny yearling ratio of 105 coupled with a progeny ultrasound ribeye ratio of 106 on five calves.

The dam of this cow is a Pathfinder Dam with a progeny weaning ratio of 106 on seven calves and a progeny yearling ratio of 105 on five head combined with a progeny ultrasound ribeye ratio of 108 on four head. Bred to calve January 20, 2007 to MCCUMBER TRADITION 383. Exposed to SITZ JLS EMULATION EXT 536P from May 12, 2006 to June 1, 2006. Exposed to SINCLAIR EXTRA 4X13 after June 1, 2006.



Rosetta 541 Of Mc Cumber - The dam of Lot 74.

McCumber Females



Lady Barbola 506 Mc Cumber - Lot 75

75 LADY BARBOLA 506 MC CUMBER

Birth Date: 1-14-2005 Cow 15050778 Tattoo: 506

#Vermilion Dateline 7078 #Connealy Dateline
MC Cumber 7111 Total Value #Vermilion Blackbird 5044
14201122 +Miss Wix 7111 of Mc Cumber #GDAR Traveler 71
#Miss Wix 365 of Mc Cumber

+BT Traveler 228K #Sitz Traveler 9929
Lady Barbola 3131 Mc Cumber +BT Everelda Entense 57D
14442514 Lady Barbola 171 Mc Cumber +Mc Cumber Foundation 701
Lady Barbola 684 Mc Cumber

IMF
+0
UREA
+56
UFAT
+022

This bred heifer by Mc Cumber 7111 Total Value earned impressive individual weaning and yearling ratios of 116 and 112 respectively as the first calf from a two-year-old dam.

This female ranks in the top one percent among non-parent females for Milk EPD.

Bred to calve January 19, 2007 to SINCLAIR EXTRA 4X13 and exposed to him after April 29, 2006.

76 RACHEL 5197 OF MC CUMBER

Birth Date: 3-24-2005 Cow 15170623 Tattoo: 5197

#AAR New Trend #VDAR Shoshone 548
BT New Trend 172K Donna AAR 74
+13629635 +BT Everelda Entense 57D #Leachman Right Time
Sitz Everelda Entense 1905

IMF
-05
UREA
-12
UFAT
-016

Prairie Eden Southern Trend #AAR New Trend
Rachel 818 of Mc Cumber PE Miss Power Play 3
13103353 Rachel 438 of Mc Cumber #Mc Cumber Rito 0054
GDAR Rachel 026

A bred heifer by the Mc Cumber high maternal sire BT New Trend 172K who ranks in the top one percent among current sires for Milk EPD.

This female is from the herd sire producing Rachel family tracing to a third dam bred in the GDAR herd in Montana.

Exposed to SINCLAIR EXTRA 4X13 from April 29, 2006 to June 1, 2006. Exposed to LT TIMBERWOLF 5014 after June 1, 2006.

77 BLUE RIBBON 870 OF MC CUMBER

Birth Date: 2-22-1998 Cow 13103377 Tattoo: 870

#Traveler 124 GDAR #QAS Traveler 23-4
Mc Cumber 124 Traveler 212 Rachel Rito 813 GDAR
#+11824721 #Miss Wix 365 of Mc Cumber #Shoshone 247 PJM
#Miss Wix 294 of Mc Cumber

#VDAR Rito 953 #Rito 2100 GDAR
Blue Ribbon 467 of Mc Cumber Miss Wix 903 of Mc Cumber
12172478 #East Fork Blue Ribbon 33 #Shoshone Viking GD60 (GDF)
#Eastfork Blue Ribbon 679

CW
I-9
MARB
I+15
REA
I+04
FAT
I-019
IMF
+02
UREA
+03
UFAT
+001

This cow from the noted Blue Ribbon family is by the high maternal Pathfinder Sire Mc Cumber 124 Traveler 212.

This female traces to a grandam who is a second generation Pathfinder Dam.

A daughter weaned her first calf with a ratio of 103.

Bred to calve February 11, 2007 to MCCUMBER TOTAL VALUE 551. Exposed to SITZ JLS EMULATION EXT 536P from May 12, 2006 to June 1, 2006. Exposed to SINCLAIR EXTRA 4X13 after June 1, 2006.

McCumber Angus Females



Blue Ribbon 641 of McCumber - Maternal sister to Lot 78.



Blackcap 988 OF HC McCumber - Lot 81

78 BLUE RIBBON 7144 Mc CUMBER

Birth Date: 3-17-1997

Cow #12823397

Tattoo: 7144

#Rito 054 GDAR
#Blackcap Forever 485 GDAR
#Shoshone 247 PJM
#Miss Wix 294 of Mc Cumber

#Rito 2100 GDAR
#Blackcap Lady 999 GDAR
#Shoshone Viking GD60 (GDF)
#Eastfork Blue Ribbon 679

IMF
-.08
UREA
-.34
UFAT
+.024

PATHFINDER DAM.

This fourth generation

Pathfinder Dam balances a progeny birth ratio of 97 with a progeny weaning ratio of 104 on seven calves and a progeny yearling ratio of 105 on five head from a dam with a progeny weaning ratio of 103 on nine calves and a progeny yearling ratio of 106 on eight head.

A son sold for \$5,750 in the 2001 McCumber Bull Sale and another sold two-thirds interest for \$5,500 in the 2004 McCumber Bull Sale.

Bred to calve March 3, 2007 to MCCUMBER 7078 VRD 3108 and exposed to him from May 12, 2006 to June 1, 2006. Exposed to LT TIMBERWOLF 5014 after June 1, 2006.

BEPD	WEPD	YEPD	MILK
+2.7	.45	+21	.43
+39	.39	+24	.26

79 ENCHANTRESS 816 Mc CUMBER

Birth Date: 2-4-1998

Cow #13103352

Tattoo: 816

#VDAR Rito 953
#Gale 607 of Mc Cumber

#+Mc Cumber 124 Traveler 212
#Traveler 124 GDAR
#Miss Wix 365 of Mc Cumber
#Rito 2100 GDAR
#Enchantress 766 Mc Cumber

IMF
-.04
UREA
+.0
UFAT
-.008

PATHFINDER DAM.

This proven Pathfinder Dam

has a progeny weaning ratio of 104 on six calves combined with a progeny IMF ratio of 103 on five head, stemming from a Pathfinder grandam.

This female blends several famous McCumber families by a proven Pathfinder Sire.

Bred to calve February 1, 2007 to MCCUMBER TRADITION 383. Exposed to SITZ JLS EMULATION EXT 536P from May 12, 2006 to June 1, 2006. Exposed to SINCLAIR EXTRA 4X13 after June 1, 2006.

BEPD	WEPD	YEPD	MILK
+2.2	.43	+23	.41
+41	.38	+24	.23

80 ENCHANTRESS 5115 OF MCCUMBER

Birth Date: 2-9-2005

Cow 15050798

Tattoo: 5115

#Vermilion Dateline 7078
#Connealy Dateline
#Vermilion Blackbird 5044
#GDAR Traveler 71
#Miss Wix 365 of Mc Cumber

#Sitz SLS Rainmaker 7596
#GDAR Rainmaker 340
#SLS Barbara Perfection 2571
#Mc Cumber 953 Rito 420
#Enchantress 687 Mc Cumber

IMF
+.05
UREA
+.24
UFAT
+.012

A granddaughter of the proven Pathfinder Dam who sells as Lot 79.

This female by McCumber 7111 Total Value was produced from a dam with a progeny IMF ratio of 119 on four head.

Bred to calve February 7, 2007 to SINCLAIR EXTRA 4X13 and exposed to him from April 29, 2006 to June 1, 2006. Exposed to LT TIMBERWOLF 5014 after June 1, 2006.

BEPD	WEPD	YEPD	MILK
+3.0	.05	+36	.05
+68	.05	+23	.05

81 BLACKCAP 988 OF HC Mc CUMBER

Birth Date: 2-17-1999

Cow 13354315

Tattoo: 988

#Scotch Cap
PAPA Optima 9818
11294119 Blackbird DHD 2816

#PS Power Play (GDF)
#Hoff Band 07 of SC 509
#QAS Traveler 23-4
RR Blackbird DHD 903

#PAPA Rito T Intense DHD 6844
PAPA Blackcap 9854
11283242 PAPA Blackcap 7813

PAPA Rito Traveler 4807
Blackcap Mc Henry DHD 4810
#Cottontail Maternal POWER464
#Blackcap DHD 3813

CW
+.3
MARB
+.08
REA
+.21
FAT
-.014
IMF
+.18
UREA
+.07
UFAT
-.001

A proven producer balancing

a progeny birth ratio of 97 with progeny weaning and yearling ratios of 103 and 101 respectively coupled with a progeny IMF ratio of 104 on five head.

This female was bred in the Dale Davis herd in Montana from a dam with a progeny weaning ratio of 107 on eight calves and a progeny yearling ratio of 105 on seven head coupled with a progeny IMF ratio of 105 on 13 head.

Bred to calve January 22, 2007 to SAV 8180 TRAVELER 004. Exposed to SITZ JLS EMULATION EXT 536P from May 12, 2006 to June 1, 2006. Exposed to LT TIMBERWOLF 5014 after June 1, 2006.

BEPD	WEPD	YEPD	MILK
+2.3	.32	+30	.30
+55	.30	+22	.14

82 ERICA LASSIE 8145 Mc CUMBER

Birth Date: 3-29-1998

Cow +13105338

Tattoo: 8145

PAPA Rito T Intense DHD 6844
#10846681 Blackcap Mc Henry DHD 4810

#QAS Traveler 23-4
DHD Blackcap Mc Henry 2824
#QAS Traveler 23-4
#Blackcap Mc Henry DHD 2822

#PS Power Play (GDF)
KMA Erica Lassie 0118
11513338 Erica Lassie KMA 2003

#Early Sunset Emulous 60E
PS Monteith Blanche 205
#QAS Traveler 23-4
Erica Lassie of RR 0236

CW
+.0
MARB
+.04
REA
+.06
FAT
-.002
IMF
+.03
UREA
-.12
UFAT
-.015

A granddaughter of the famous

Erica Lassie KMA 2003 who is best known as the dam of KMA Highroller 5025.

This daughter of the Pathfinder Sire PAPA Rito T Intense DHD 6844 has a progeny weaning ratio of 104 and a progeny yearling ratio of 106 on five calves.

Bred to calve January 27, 2007 to MCCUMBER TRADITION 383. Exposed to SITZ JLS EMULATION EXT 536P from May 12, 2006 to June 1, 2006. Exposed to LT TIMBERWOLF 5014 after June 1, 2006.

BEPD	WEPD	YEPD	MILK
+2.9	.32	+27	.31
+54	.30	+17	.15



Erica Lassie 8145 McCumber - Lot 82

McCumber Reference Sire



LT Timberwolf 5014 - Reference Sire H.



LT TIMBERWOLF 5014

Birth Date: 2-18-2005

Bull 15147477

Tattoo: 5014

Wulffs EXT 6106
+12813196

#N Bar Emulation EXT
Wulffs Erica Dianna C116

#Emulation N Bar 5522
N Bar Primrose 2424
#Tehama Bando 155
Wulffs Erica Dianna A308

LT Ethelda 3245
14502923

#Sitz Value 7097
LT Ethelda 9012

#Sitz Traveler 6802
#Sitz Eisa Evergreen 791
#Marcys Powerstroke
Marcys 94 Ethelda E 90

CW	IMF
146	-06
MARB	REA
1+.04	1-.04
FAT	UFAT
1+.020	1-.003

FOR REFERENCE ONLY.

The McCumber junior herd sire selected with TC Ranch and the Genex/CRI AI Stud as the \$44,000 top-selling bull of the 2006 Lindskov-Thiel Sale.

This bull combines an individual birth ratio of 98 with an individual weaning ratio of 116, and individual yearling ratio of 114 and an individual ultrasound ribeye ratio of 109 to rank in the top five percent among non-parent bulls for Weaning Weight EPD and in the top ten

BEPD	WEPD	YEPD	MILK
+1.4	.37	+53	.30
+92	.27	+22	.19

percent for Yearling Weight EPD combined with a below breed average Birth Weight EPD.

This bull is a son of the now-deceased Genex/CRI Sire Wulffs EXT 6106 produced as the first calf from a dam by the Genex/CRI Pathfinder Sire Sitz Value 7097 stemming from a grandam by the Pathfinder Sire Marcys Powerstroke. His first service sells.



Wulffs EXT 6106 - The sire of Reference Sire H.



Sitz Value 7097 - Maternal grandsire of Reference Sire H.

Reference Sires

Notes



Leachman Right Time

CW				IMF			
+12				+08			
MARB				UREA			
-07				+17			
REA				UFAT			
+12				+029			
FAT							
+023							
BEPD	WEPD	YEPD	MILK				
+2.3	.98	+44	.98	+83	.97	+19	.97



*C.A. Future Direction
5321*

CW				IMF			
+22				+72			
MARB				UREA			
+37				+87			
REA				UFAT			
+80				+011			
FAT							
+007							
BEPD	WEPD	YEPD	MILK				
+7	.97	+37	.97	+72	.97	+31	.96



Vermilion Dateline 7078

CW				IMF			
+13				-11			
MARB				UREA			
-05				+56			
REA				UFAT			
+24				-008			
FAT							
+007							
BEPD	WEPD	YEPD	MILK				
+6.0	.97	+63	.97	+116	.97	+20	.96

McCumber
Angus
Ranch



Fall Female Sale



Featuring
the Famous
McCumber
Cow Families

Miss Wix 6001 Of McCumber - Lot 1A

Mature Cows
1997-1999 Born,
Bred Heifers,
Select Open
Heifers



Miss Wix 6002 Of McCumber - Lot 1B



Sale Managers
TOM BURKE, KURT SCHAFF, JEREMY HAAG

AMERICAN ANGUS HALL OF FAME
at the WORLD ANGUS HEADQUARTERS
Box 660, Smithville, MO 64089-0660.
Phone: (816) 532-0811
Fax: (816) 532-0851
E-mail angushall@earthlink.net - www.angushall.com

FIRST CLASS
MAIL
U.S. POSTAGE
PAID
Minster, OH
Permit #1