



Annual Bull Sale
Friday, March 31, 2006
At the Ranch, west of Rolette, ND
Sale Time: 1:00 p.m.



Offering **105**
Yearling Bulls

McCumber
Angus
Ranch



McCumber
Angus
Ranch



Chuck and Gail Tastad
Phone/fax 701/246-3366
Email: mccumber@utma.com
Web site:
www.mccumberangus.com

*Matt, Cynthia,
Sydney, Eva and Nate Tastad*
Phone/fax 701/246-3847
Web site:
www.mccumberangus.com

RR 1 - Box 128
Rolette, North Dakota 58366

Dear Valued Customers and Cattle Men and Women,

It is with great pleasure that we welcome you to our annual bull sale. This year represents 42 continuous years of breeding Angus cattle. We want to thank you for your generous support of our program, and also thank those who help out around here from time to time. It is our hope that we can be your source for high quality seed stock now, and into the future.

We are very proud of this year's offering. It includes top end bulls from top to bottom, and as many herd sire prospects as we have ever offered. The bulls are moderate framed, heavy muscled, deep-bodied beef bulls. They are structurally sound, and developed with you in mind. The bulls are designed to work under any environment, and have generations of outstanding females behind them.

It is an exciting time to be in the beef cattle business. Calves are selling at record prices, and high quality females are in high demand. Now is the time to prepare for the times that are not quite as good. The genetics you select today will influence your herd for many years to come. This is the reason why it is important to select cattle that will add to your bottom line no matter what price calves are selling for. **Research has shown that reproduction is 5 to 10 times more economically important than carcass traits.** Does this mean that we ignore carcass traits or that we should not pay attention to them? No, the consumer is the ultimate customer, however **the commercial cow/calf producer needs to be profitable, and a low-maintenance, problem free cowherd is what gets the bills paid.** This is why we avoid fads, and extreme outliers, and continue to focus on stacking generations of outstanding females into our cattle. As you page through the catalog you will notice many bulls produced by females with **generations of outstanding production** behind them. This type of cow is moderate framed, easy fleshing; fertile, productive and has stay ability. They are not only bred to pass on the **convenience traits** of mothering ability, udder quality, sound feet and legs, and a good disposition, but are also bred to produce **PREDICTABLE, PROFITABLE**, commercial oriented cattle that will help add to your bottom line!!

There are several herd sire prospects that we would like to bring to your attention. The 504 bull will definitely get your attention with his **extra performance, style, and muscle.** His dam is one of the most powerful Right Time daughters that we have seen. **The lot 513 bull is phenotypically, and genetically one of the most intriguing bulls we have bred.** His extra muscle, tremendous depth, and fault free structure is very impressive, and **we think he is as good as any Traveler 004 to sell this year.** Lot 551 is an **absolute beef bull.** He is stout, heavy muscled, deep bodied, and tremendous on his feet and legs. His dam typifies the type of cow we talk about in the above comments. I believe we are selling one of **the largest groups of Right Time sons** in the country. They offer a unique opportunity to select sons of one of the most proven bulls in the Angus breed. Some of his outstanding sons in the offering include, Lot 517, 556, 582, 589, 5006, 5036, and 5166. The first sons of Mc Cumber Tradition 383 are selling, and are led by lot 549. His **overall mass, muscle, and soundness in the right kind of package** will impress you. There are also several sons of VRD, New Day, and 24J that deserve your attention.

As always, ALL the performance, and ultrasound data has been included in the catalog. The bulls have passed a breeding soundness exam and fertility test. They are guaranteed to be breeders and we stand behind the bulls 100%. If you have any question or problems, be sure to let us know.

If we can be of any assistance, please do not hesitate to call either Dad or me.

Chuck and Matt Tastad



Contact McCumber

Chuck & Gail Tastad 701.246.3366
Matt, Cynthia,
Sydney, Eva & Nate Tastad 701.246.3847

RR 1 Box 128 ♦ Rolette, ND 58366
E-mail: mccumber@utma.com
Web site: www.mccumberangus.com

Auctioneer

Roger Jacobs 406.698-7685
Box 270
Shepherd, MT 59079

Sale Consultants

Jim O'Neill 712.644.2062
Cell 402.680.3171
Casey St. Blanc 985.789.2110
Home 985.796.0607
Ken Brubaker 540.908.5799

Special Representatives

Very Frey, Angus Journal 701.537.5383
Cell 701.721.0344
Terry Robinson, Farm and Ranch Guide 701.255.3037
Kirby Goettsch, Western Livestock Reporter 605.380.3939
Scott Dirk, Tri-State Neighbor 605.335.7300

Buyers unable to attend the sale may send bids to
McCumber Angus Ranch,
the Sale Consultant or any Representative

Sale Day Phones

701.246-3366 ♦ 701.246.3234 ♦ 701.246.3475

Herd Health

The Mc Cumber herd is in excellent health, and all cattle sell
with interstate health papers. Bulls have been vaccinated
with Bovishield Gold 4, 7-way, Ivomec and have had a
complete fertility test.

Terms & Conditions

All cattle sell under the standard terms and conditions of the
American Angus Association. Terms of the sale are cash.

Volume Discounts

We will discount your purchase price 3% on 3 head
purchased by one buyer and up to 10% on 10 head
purchased by one buyer.

Delivery

We offer free delivery in North Dakota and adjacent states.
All cattle will be cared for until delivery arrangements can
be made.

Lodging

Rolette Motel, Rolette ND 701.246.3733
Sky Dancer Hotel & Casino, Belcourt ND 701.244.2400
Econo Lodge, Rugby ND 701.776.5776
Hub Motel, Rugby ND 701.776.5833
Multiple locations in Minot ND

Transportation

Rolette ND has a 3,500 foot paved runway. Minot, ND is
served by Northwest Airlines. Minot is 90 miles from the
ranch.

Bull Sale

Friday, March 31, 2006
1:00 pm CST at the Ranch

1 mile west and 1/4 mile south of Rolette, North Dakota

Join us for lunch on sale day!

Selling 105 Yearling Bulls



Marketing

If you have calves sired by our bulls, we would like to help you market them. We would also like to know if you have bred heifers, and/or heifer calves for sale in the fall. We get calls looking for good commercial females. I would also suggest checking out the Angus Source program. This is a very simple way to set your Black Angus sired calves apart from the rest when it comes time to sell them.

Semen Interest

You will notice that we are retaining an interest in quite a few of the bulls. These are bulls we may want to collect semen from in the future for use within our herd. If we are able to sell semen from your bull, we would share with you any revenue generated from the sale of semen. The bulls would be collected when it was convenient for you. The buyer has full possession and salvage value of the bull. Many of these bulls will undoubtedly sell in the price range of the commercial man.

Sight Unseen Purchase Program

If you cannot attend the sale and would like to purchase bulls, please give us a call and we'll be glad to help you with your order. Describe the type of bull, minimum and maximum parameters and price range. We want to assure you that your bid will be handled with the utmost professionalism and your money handled like it is our own. We guarantee 100% satisfaction on all orders. If you get the bull and don't like him, we will take him back.

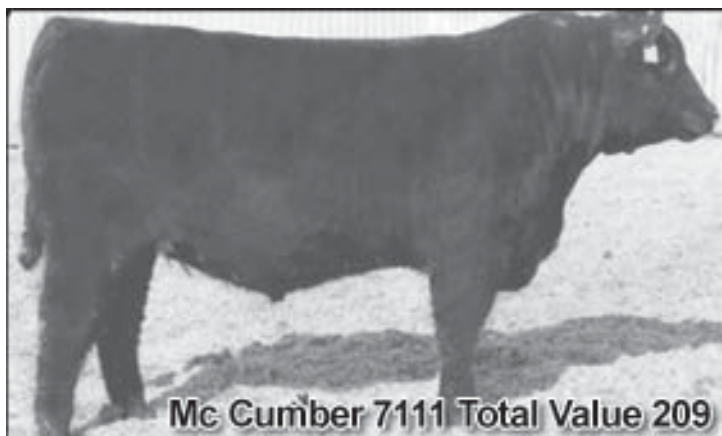
Nutrition

The bulls were fed the same basic ration as in the past. We had them on a ration that reached 49 mcal, and was 15% protein. The bulls performed superbly and had very modest back fat, thus ensuring their soundness and longevity. Once again the calves received a highly medicated creep, while the cows were dry lotted, prior to going to pasture. This has helped tremendously with the control of pneumonia. Once the cattle are on grass, the cows and calves do not receive any supplemental feed, except for mineral and salt.

Affordability

Mc Cumber bulls are affordable. Here is a breakdown of the last three bull sales:
 47% have sold for less than \$2,000
 69% have sold for less than \$2,500
 83% have sold for less than \$3000

2006 Mc Cumber Angus Ranch Reference Sires



A Mc Cumber 7111 Total Value 209

Calved: 01/20/2002

Reg. No. 14201122

Connealy Dateline	D H D Traveler 6807
Vermilion Dateline 7078	Eila Eila of Conanga
Vermilion Blackbird 5044	Leachman Right Time
	Vermilion Blackbird 3525
G D A R Traveler 71	Traveler 1148 G D A R
Miss Wix 7111 of Mc Cumber	G D A R Miss Blackcap 567
Miss Wix 365 of Mc Cumber	Shoshone 247 P J M
	Miss Wix 294 of Mc Cumber

Individual Record	
BW	88
WW	865
305	726
WR	110
ADG	4.02
YW	1400
365	1369
YR	111
\$ Values	
BW	27.03
RF	19.00
SG	11.77
RE	30.19

EPDs								Dam's Production		
BW	WW	Milk	YW	SC	IMF	REA	Fat	BW	WW	YW
2.8	47	27	78	.44	.09	.23	.014			

- Dam is the outstanding Miss Wix 7111 of Mc Cumber
- Recorded a 205 day wt 726/110, Gain 4.02/113, Yearling Weight 1369/111, with a 14.7 ribeye.
- Consistently sires exceptional length, depth and sound feet and legs.
- Daughters are very feminine, deep bodied, with a wide chest floor and excellent udders.
- Maternal sister was the top selling bred heifer in our 2003 Female sale.
- IMF Ratio of 102 on all calves produced in five herds
- Successfully used on heifers.
- Owned with Marcy Cattle Co., NE and Nielsen Angus, NE
- Contact any of the owners for semen



SAV 8180 Traveler 004

Calved: 01/01/2000

Reg. No. 13512009

G D A R Traveler 71
Sitz Traveler 8180
Sitz Everelda Entense 1137

Traveler 1148 G D A R
G D A R Miss Blackcap 567
G D A R Rainmaker 340
Sitz Everelda Entense 2335
V D A R Shoshone 548
Donna A A R 74
Leachman Right Time
S V F Forever Lady 1128

Individual Record	
BW	
WW	
305	
WR	
ADG	
YW	
365	
YR	
S Values	
BW	25.89
SF	46.12
SG	6.32
RR	37.79

EPDs								Dam's Production		
BW	WW	Milk	YW	SC	IMF	REA	Fat	BW	WW	YW
3.2	61	27	112	1.19	-.06	.48	.011			

- Sires deep, high volume cattle with muscle.
- His first sons have been very popular
- Dam is a flush sister to New Day
- Exceptional performance.



SAV 8180 Traveler 004



Leachman Right Time



Leachman Right Time

Calved: 01/30/1992

Reg. No. 1175-711

Emulation N Bar 5522
N Bar Emulation EXT
N Bar Primrose 2424

Tehama Bando 155
Leachman Erica 0025
Leachman erica 8058

Emulation 31
Ankkony 8F78 Lass 8F275
Emulation 31
Primrose N Bar 9962
Band 234 of Ideal 3163
Tehama Blackcap G373
Leachman Full Image
Leachman Erica 1010

Individual Record	
BW	
WW	
305	
WR	
ADG	
YW	
365	
YR	
S Values	
BW	25.45
SF	24.09
SG	5.85
RR	27.32

EPDs								Dam's Production		
BW	WW	Milk	YW	SC	IMF	REA	Fat	BW	WW	YW
2.3	44	18	82	.17	.08	.18	.029			

- Sire of outstanding females
- Daughters are very feminine with excellent udders
- Sons are moderate birth weight, long bodied with good muscle



McCumber Tradition 383

Calved: 01/30/1992

Reg. No. 14667477

N Bar Emulation EXT
Leachman Right Time
Leachman Erica 0025

Mc Cumber 124 Traveler 212
Lassie 7015 of Mc Cumber
Lassie 648 of Mc Cumber

EMulation N Bar 5522
N bar Primrose 2424
Tehama Bando 155
Leachman Erica 8058
Traveler 124 G D A R
Miss Wix 365 of Mc Cumber
Rito 2100 G D A R
Lassie 252 of Mc Cumber

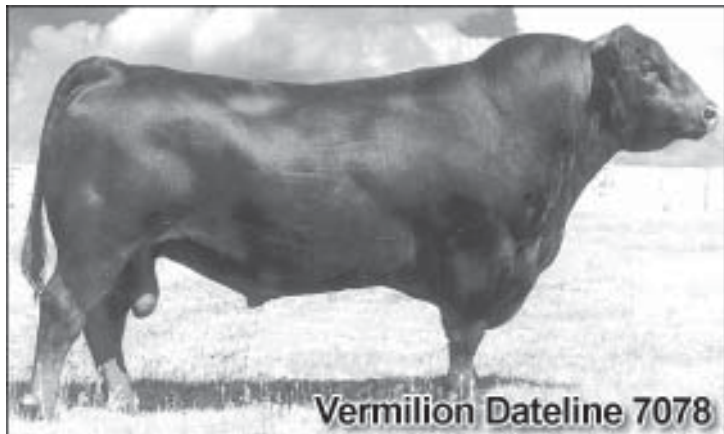
Individual Record	
BW	
WW	
305	
WR	
ADG	
YW	
365	
YR	
S Values	
BW	21.78
SF	18.13
SG	4.00
RR	19.98

EPDs								Dam's Production		
BW	WW	Milk	YW	SC	IMF	REA	Fat	BW	WW	YW
3.0	39	21	74	.50	-.06	.18	.038			

- An outstanding son of Right Time that we are going to use extensively
- Outstanding cow family in terms of production and phenotype
- Will add depth and muscle
- One of the top selling bulls in our 2004 Bull Sale
- Owned with Heritage Angus Farm, Ed and Lori Williams in MS
- Semen available for sale - contact either owner



McCumber Tradition 383



Vermilion Dateline 7078



Vermilion Dateline 7078

Calved: 02/04/1997

Reg. No. 12810693

D H D Traveler 6807
 Connealy Dateline
 Eila Eila of Conanga

 Leachman Right Time
 Vermilion Blackbird 5044
 Vermilion Blackbird 3525

Q A S Traveler 23-4
 Bemindful Maid D H D 0807
 Scotch Cap
 Eila Eila of Conanga
 N Bar Emulation EXT
 Leachman Erica 0025
 B A R Stacker 31
 Vermilion Blackbird 9398

Individual Record	
BW	
WW	
305	
WRL	
ADG	
YW	
365	
YR	
S Values	
BW	19.33
BF	51.56
SG	6.59
BB	39.34

EPDs								Dam's Production		
BW	WW	Milk	YW	SC	IMF	REA	Fat	BW	WW	YW
6.0	63	20	116	.62	-.11	.57	-.008			

- The VRDs have tremendous performance, muscle and length
- His first daughters have good udders, are easy fleshing, and are productive.
- VRD's will add length and muscle



Mc Cumber Classic 202

Calved: 01/13/2002

Reg. No. 14208279

Band 234 of Ideal 3163
 Tehama Bando 155
 Tehama Blackcap G373

 Shoshone 247 PJM
 Miss Wix 365 of McCumber
 Miss Wix 294 of McCumber

Band 602 of Ideal 928 72
 Rito 149 of Ideal 443
 Tehama 72 Rito 330
 Tehama Blackcap E475
 Schearbrook Shoshone
 Juanada 104 of PJM
 Marshall Pride 18 A O
 Miss Wix 682 of McCumber

Individual Record	
BW	
WW	
305	
WRL	
ADG	
YW	
365	
YR	
S Values	
BW	23.61
BF	-10.82
SG	20.07
BB	7.73=

EPDs								Dam's Production		
BW	WW	Milk	YW	SC	IMF	REA	Fat	BW	WW	YW
1.5	24	23	37	-.27	.07	.01	-.039			

- Direct son of Miss Wix 365 of Mc Cumber
- High selling bull in our 2003 sale at \$40,000.00
- Semen for sale



Mc Cumber Classic 202



BT New Trend 172K



BT New Trend 172K

Calved: 01/13/2002

Reg. No. 13629635

V D A R Shoshone 548
 A A R New Trend
 Donna A A R 74

 Leachman Right Time
 BT Everelda Entense 57D
 Sitz Everelda Entense 1905

Schearbrook Shoshone
 V D A R Polly 308
 Candolier Forever 376
 Donna 244 G D A R
 N Bar Emulation EXT
 Leachman Erica 0025
 Traveler 124 G D A R
 Sitz Everelda Entense 1791

Individual Record	
BW	
WW	
305	
WRL	
ADG	
YW	
365	
YR	
S Values	
BW	22.93
BF	3.79
SG	19.68
BB	24.90

EPDs								Dam's Production		
BW	WW	Milk	YW	SC	IMF	REA	Fat	BW	WW	YW
3.6	34	37	57	2.52	.16	.24	-.012			

- Breeds number one scrotal EPD bull
- Sires long, deep, correct cattle.
- Daughters produce excellent calves.
- Progeny consistently have a high IMF ratio.
- Dam sold 1/2 interest for \$190,000.00
- Owned with Beartooth Ranch, MT



BT Right Time 24J

Calved: 01/13/2002

Reg. No. 13360311

N Bar Emulation EXT
Leachman Right Time
Leachman Erica 0025

Emulation N Bar 5522
N Bar Primrose 2424
Tehama Bando 155
Leachman eRica 8058
QAS Traveler 23-4
RAchel Rito 813 G D A R
R R Rito Highroller 8025
Everelda ENTense 27 S A R

Individual Record	
BW	
WW	
305	
WR	
ADG	
YW	
365	
MR	
S Values	
BW	27.16
BF	21.79
SG	14.66
MR	35.37

Traveler 124 G D A R
Sitz Everelda Entense 1905
Sitz Everelda Entense 1791

EPDs								Dam's Production		
BW	WW	Milk	YW	SC	IMF	REA	Fat	BW	WW	YW
2.7	50	20	82	-.02	.18	.47	.026			

- Known as the "Cow Maker"
- Sires moderate framed cattle
- Daughters are deep bodied, excellent udder quality and easy fleshing.



BT Right Time 24J



Boyd New Day 8005



Boyd New Day 8005

Calved: 01/13/2002

Reg. No. 13050780

V D A R Shoshone 548
A A R New Trend
Donna A A R 74

Schearbrook Shoshone
V D A R Polly 308
Candolier Forever 376
Donna 244 G D A R
N Bar Emulation EXT
Leachman ERica 0025
Skarship Saratoga
Forever Lady 163 G D A R

Leachman Right Time
S V F Forever Lady 57D
S V F Forever Lady 1128

Individual Record	
BW	
WW	
305	
WR	
ADG	
YW	
365	
MR	
S Values	
BW	24.94
BF	43.36
SG	8.81
MR	39.34

EPDs								Dam's Production		
BW	WW	Milk	YW	SC	IMF	REA	Fat	BW	WW	YW
2.4	52	24	104	.40	-.03	.71	.003			

- Sires long bodied, thick cattle that perform very well.
- A ¼ brother to our BT New Trend 172K bull
- Calves are born very easily
- Sired high selling bull in 2005 going to Cleave Woods, SD



Mc Cumber New Trend 1206

Calved: 01/13/2002

Reg. No. 14201196

V D A R Shoshone 548
A A R New Trend
Donna A A R 74

Schearbrook Shoshone
V D A R Polly 308
Candolier Forever 376
Donna 244 G D A R
Traveler 124 G D A R
Miss Wix 365 of Mc Cumber
Shoshone Viking GD60
Miss Wix 117 of Mc Cumber

Individual Record	
BW	
WW	
305	
WR	
ADG	
YW	
365	
MR	
S Values	
BW	8.37
BF	-24.95
SG	22.65
MR	-13.73

Mc Cumber 124 Traveler 212
Miss Wix 705 of Mc Cumber
Miss Wix 245 of Mc Cumber

EPDs								Dam's Production		
BW	WW	Milk	YW	SC	IMF	REA	Fat	BW	WW	YW
5.0	2	23	12	1.42	.01	.41	-.032			

- New Trend son out of Mc Cumber Foundation 701's flush sister
- Stamping his calves with depth, muscle and thickness.
- Daughters are the image of his dam Miss Wix 705 of Mc Cumber.
- Progeny are high REA

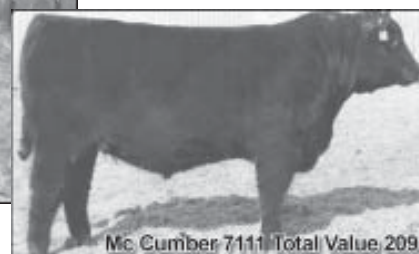


Miss Wix 705 of Mc Cumber

Dam of Mc Cumber New Trend 1206



Mc Cumber Total Value 504



Mc Cumber 7111 Total Value, 209

Sire of Lot 504



Leachman Right Time

Sire of Lot 504's dam.



Miss Wix 7111 of Mc Cumber

Paternal Grand dam of Lot 504.



Lassie 688 of Mc Cumber

Lassie 688 and Lassie 974 are maternal sisters to dam of Lot 504.



Lassie 974 of Mc Cumber



504

MC Cumber Total Value 504

Calved: 01/12/2005

Reg. No. 15050776

Vermilion Dateline 7078
 MC Cumber 7111 Total Value
 Miss Wix 7111 of Mc Cumber
 Leachman Right Time
 Lassie 206 of Mc Cumber
 Lassie 272 of Mc Cumber

Connealy Dateline
 Vermilion Blackbird 5044
 G D A R Traveler 71
 Miss Wix 365 of Mc Cumber
 N Bar Emulation EXT
 Leachman Erica 0025
 A A R New Trend
 Lassie 252 of Mc Cumber

Individual Record	
BW	87
WW	890
305	810
WR	120
ADG	3.64
YW	1370
365	1392
WR	112

EPDs								Dam's Production			Ultrasound Data	
BW	WW	Milk	YW	SC	IMF	REA	Fat %RP	BW	WW	YW	MF	3.36/86
2.6	52	27	85		-0.01	0.48	0.005	2/101	2/115	2/110	REA	14.40/115
											Fat	0.21/75

Lot 504 - Selling 2/3 interest and full possession - Recommended for use on heifers - This genuine herd sire prospect has all the credentials. He combines **explosive early growth**, in what we feel is an ideal package. He is without a doubt the longest bodied bull in the pen. He combines thickness and tremendous muscle shape in a moderate framed package. His visual muscle is confirmed by the fact that he scanned the largest actual REA of the calf crop. 504 was one of the favorites all summer. Along with his tremendous phenotype, he weaned off his outstanding dam at 890 lbs., with a 205 day weight of 810 lbs. to ratio 120 as the third high weaning bull of the calf crop. His weaning weight EPD of +52 ranks in the top 4%, and his \$Weaning index of 28.60 ranks in the top 3% of non - parent bulls in the Angus breed. He weighed off test at 1370 lbs. to nearly break the 1400 lb. barrier at a year to ratio 112.

Possibly the best part of him is his tremendous dam, Lassie 206 of Mc Cumber. She has an excellent udder, is deep bodied, and one of the thickest cows we own. To this point, she has not missed a beat. She has a calving interval of 3/364 days and ratios 2/115 for weaning, and 2/110 for yearling, and has another standout full brother to 504 already this spring. Her dam Lassie 272 of Mc Cumber sold as a feature of a past cow sale to Bob Harris and Claybrook Farms in TN. Her maternal sister Lassie 688 of Mc Cumber topped our 2003 cow sale and sold to a group of breeders in NE. Yet, another maternal sister Lassie 974 of Mc Cumber produced the high selling bull in our 2004 bull sale selling for \$11,500. One of her full sisters was the 3rd high selling bred heifer in our 2003 cow sale selling to Koupal Angus Ranch in SD. Lassie 206 has also had 3 maternal brothers sell for an average of over \$5000, to Dick Nielson, Paul Foss, and Lonnie Anderson. The Lassie cow family, although not as famous as the Miss Wix family, does not take a back seat to any cow family on this ranch.

One of the most complete bulls we have produced to date, he is definitely a herd bull.



501

MC Cumber 202 Classic 501

Calved: 12/23/2004

Reg. No. 15050764

Tehama Bando 155
 Mc Cumber Classic 202
 Miss Wix 365 of Mc Cumber
 Mc Cumber Foundation 701
 Enchantress 018 of Mc Cumber
 Enchantress 719 of Mc Cumber

Band 234 of Ideal 3163
 Tehama Blackcap G373
 Shoshone 247 P J M
 Miss Wix 294 of Mc Cumber
 Mc Cumber 124 Traveler 212
 Miss Wix 235 of Mc Cumber
 Mr Wix of Mc Cumber 204
 Enchantress 5130 Mc Cumber

Individual Record	
BW	97
WW	862
305	
WR	
ADG	3.89
YW	1375
365	1225
WR	100

EPDs								Dam's Production			Ultrasound Data	
BW	WW	Milk	YW	SC	IMF	REA	Fat %RP	BW	WW	YW	MF	5.09
2.7	27	22	45					2/103	2/98	3/97	REA	13.00
											Fat	0.26

Lot 501 - The first son of our herd sire Mc Cumber Classic 202. This big, stout December bull is long bodied, and excellent on his feet and legs. His dam is a tremendously easy fleshing, good uddered daughter of Mc Cumber Foundation 701. 501 is a bit older so should have no trouble covering a few more cows than the average yearling.



MC Cumber New Day 510

Calved: 01/16/2005

Reg. No. 15050782

AAR New Trend
Boyd New Day 8005
S V F Forever Lady 57D

Mr Wix of Mc Cumber 204
Blackcap 9128 of Mc Cumber
Blackcap 306 of Mc Cumber

V D A R Shoshone 548
Donna AAR 74
Leachman Right Time
S V F Forever Lady 1128
Tehama Bando 155
Miss Wix 204 of Mc Cumber
Mc Cumber Rito 0054
Blackcap 03 of Mc Cumber

Individual Record	
BW	89
WW	708
205	618
WR	92
ADG	4.18
YW	1260
365	1287
YR	103
Ultrasound Data	
MF	3.33/85
REA	11.60/93
Fat	0.30/107

EPDs								Dam's Production		
BW	WW	Milk	YW	SC	IMF	REA	Fat %RP	BW	WW	YW
2.2	36	23	78		-0.06	0.09	0.008	5/97	5/99	4/102

Lot 510 - Recommended for use on heifers - One of the biggest framed bulls in the sale and one of the top gaining bulls at 4.18 lbs./day. If you like a little more frame this bull will catch your eye. His dam is a wonderful uddered daughter of Mr. Wix of Mc Cumber. With one son selling through a past bull sale to Mark Reinhardt.



Mc Cumber New Day 510



MC Cumber 004 Traveler 513

Calved: 01/18/2005

Reg. No. 15050814

Sitz Traveler 8180
A V 8180 Traveler 004
Boyd Forever Lady 8003

Leachman Right Time
Miss Wix 301 of Mc Cumber
Miss Wix 1119 of Mc Cumber

G D A R Traveler 71
Sitz Everelda Entense 1137 S
AAR New Trend
S V F Forever Lady 57D
N Bar Emulation EXT
Leachman Erica 0025
Mc Cumber Ferdinand 896
Miss Wix 8002 of Mc Cumber

Individual Record	
BW	83
WW	788
205	768
WR	112
ADG	3.88
YW	1300
365	1389
YR	112
Ultrasound Data	
MF	3.50/92
REA	14.50/118
Fat	0.23/88

EPDs								Dam's Production		
BW	WW	Milk	YW	SC	IMF	REA	Fat %RP	BW	WW	YW
3.1	57	24	102		-0.06	0.09	0.008	1/101	1/112	1/112

Lot 513 - Selling 2/3 interest and full possession - Recommended for use on heifers - This is **with out a doubt the best son of Traveler 004 that we have produced**. 513 is heavy muscled, deep bodied, and has an excellent hindquarter that is big and expressive. Along with his muscle he stands very correct on his feet and legs and moves out extremely free and easy. Starting with only an 83 lb. birth weight, 513 weaned off his beautiful Right Time dam at 788 lbs. to ratio 112 as his dam's first calf. He gained 3.88 lbs./day and weighed off test at 1300 lbs. with a 365 day weight of 1389 to ratio 112. His WW and YW EPDs rank him in the top 1% of the breed for non - parent Angus bulls.

His wonderful Right Time dam is nice fronted, long bodied, easy fleshing, super sound, and has an impeccable udder. She stems from the Miss Wix cow family and after her dam traces to **5 consecutive generations of pathfinder cows that include Miss Wix 365 of Mc Cumber**. The cow power alone behind this bull make him a herd sire prospect, but he combines that with some of the best performance, EPDs, and phenotype that we have produced. **Mark him a herd bull!!!**



MC Cumber Total Value 515

Calved: 01/18/2005

Reg. No. 15050833

Vermilion Dateline 7078
MC Cumber 7111 Total Value
Miss Wix 7111 of Mc Cumber

Connealy Dateline
Vermilion Blackbird 5044
G D A R Traveler 71
Miss Wix 365 of Mc Cumber
Sitz Traveler 9929
BT Everelda Entense 57D
California Traveler
Lassie 628 of Mc Cumber

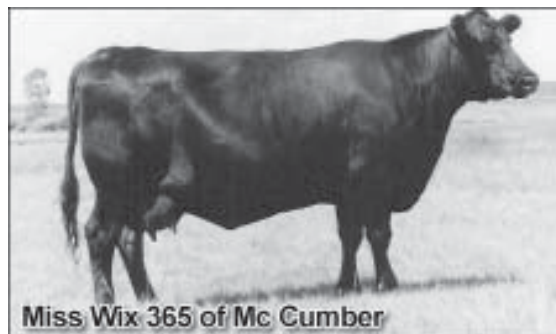
Individual Record	
BW	89
WW	838
205	811
WR	118
ADG	3.27
YW	1270
365	1334
YR	108
Ultrasound Data	
MF	4.03/06
REA	13.00/106
Fat	0.20/77

EPDs								Dam's Production		
BW	WW	Milk	YW	SC	IMF	REA	Fat %RP	BW	WW	YW
2.8	44	33	71		0.16	0.17	-0.001	1/108	1/118	1/108

Lot 515 - This big, stout scamp, weaned off his first calf dam at 838 lbs., with a 205 day weight of 811 lbs. to ratio 118, and take his place as one of the top weaning weight calves of the calf crop. His dam is a perfect uddered daughter of BT Traveler 228K, and a maternal sister to one of the top Leachman Right Time bulls selling in this sale Lot 589. 515 is the largest framed son of Mc Cumber 7111 Total Value 209, and should sire that early explosive growth, for those big steer calves at weaning.



SAV 8180 Traveler 004



Miss Wix 365 of Mc Cumber

- From top:
- Sire of lot 513
 - Maternal Foundation Dam of Lot 513



Mc Cumber 004 Traveler 513



Mc Cumber Right Time 517

517 MC Cumber Right Time 517

Calved: 01/19/2005

Reg. No. 15050853

N Bar Emulation EXT
Leachman Right Time
Leachman Erica 0025

Emulation N Bar 5522
N Bar Primrose 2424
Tehama Bando 155
Leachman Erica 8058
Mc Cumber 124 Traveler 212
Miss Wix 235 of Mc Cumber
V D A R Rito 953
B Pride 274 of Mc Cumber

Individual Record	
BW	106
WW	810
305	712
WR	106
ADG	3.56
YW	1280
365	1282
YR	103

Ultrasound Data	
MF	3.83/98
REA	12.40/99
Fat	0.43/154

EPDs		Dam's Production									
BW	WW	Milk	YW	SC	IMF	REA	Fat	%RP	BW	WW	YW
4.5	36	68	23		0.01	0.09	0.040		4/110	4/109	4/105

Lot 517 - Selling 2/3 interest and full possession - This outstanding bull is the first of many Leachman Right Time sons selling in this sale. One thing to note on these Right Time son's is that we used him on a lot of our top - producing cows, hoping to put a bunch of outstanding Right Time daughters back in the herd.

517 has been a standout since birth. He is long, thick, deep, and made extremely well. He broke the 800 lb. mark at weaning, and has developed into a masculine, **top - notch herd sire prospect**. His dam is one of the top - producing daughters of Mc Cumber Foundation 701. She has a perfect udder is easy fleshing, and raises outstanding calves every year, making pathfinder at her earliest eligibility with a WWR of 4/109 and YWR of 4/105. She has two graduates of our bull sale selling for an average of \$2800.

518 MC Cumber 004 Traveler 518

Calved: 01/20/2005

Reg. No. 15050864

Sitz Traveler 8180
SAV 8180 Traveler 004
Boyd Forever Lady 8003

G D A R Traveler 71
Sitz Everelda Entense 1137
A A R New Trend
S V F Forever Lady 57D
A A R New Trend
BT Everelda Entense 57D
Mc Cumber Rito 0054
Blackcap 282 of Mc Cumber

Individual Record	
BW	88
WW	726
305	717
WR	104
ADG	3.29
YW	1160
365	1243
YR	100

Ultrasound Data	
MF	4.12/108
REA	11.90/97
Fat	0.25/96

EPDs		Dam's Production									
BW	WW	Milk	YW	SC	IMF	REA	Fat	%RP	BW	WW	YW
4.3	46	26	79		0.03	0.19	-0.001		1/106	1/104	1/100

Lot 518 - Another excellent son of Traveler 004. 518 is moderate framed, deep bodied, and excellent on his feet and legs. He weaned off his dam at 754lbs. to ratio 104. His dam is one of our best daughters of BT New Trend 172k. She is deep ribbed, and has a perfect udder with small teats and a tight attachment. We calved our first daughters of Traveler 004 already this Spring, and they are excellent. They have superb udders are deep bodied easy fleshing, and making excellent mothers, with a good disposition, and we have noticed that they have the will to calve, once they get started it doesn't take them long to have the calf.

519 MC Cumber 24J RT Time 519

Calved: 01/20/2005

Reg. No. 15050872

Leachman Right Time
BT Right Time 24J
Sitz Everelda Entense 1905

N Bar Emulation EXT
Leachman Erica 0025
Traveler 124 G D A R
Sitz Everelda Entense 1791
Mc Cumber Equator 6122
Rosetta 421 of Mc Cumber
Mr Wix of Mc Cumber 204
Rosetta 4117 of Mc Cumber

Individual Record	
BW	80
WW	638
305	640
WR	93
ADG	3.79
YW	1138
365	1246
YR	101

Ultrasound Data	
MF	3.90/103
REA	12.50/02
Fat	0.20/77

EPDs		Dam's Production									
BW	WW	Milk	YW	SC	IMF	REA	Fat	%RP	BW	WW	YW
2.6	38	21	72		0.14	0.25	0.003		1/97	1/93	1/101

Lot 519 - Recommended for use on heifers - This moderate framed, deep bodied, heavy muscled son of BT Right Time 24J puts a foot down in all four corners. 519 has really come on since weaning, and gained at 3.80lbs./day. His dam is a daughter of the now deceased Mc Cumber 6122 Equator 8113, and has the look of a wonderful young cow. Her udder is absolutely perfect, and she holds her flesh extremely well. The 24J daughters look like the type of cows that can withstand an array of environments. They are moderate framed, have tremendous volume, and are thick made cows that milk moderately, allowing them to thrive in many environments. We like ours a lot.

522 MC Cumber Right Time 522

Calved: 01/21/2005

Reg. No. 15050878

N Bar Emulation EXT
Leachman Right Time
Leachman Erica 0025

Emulation N Bar 5522
N Bar Primrose 2424
Tehama Bando 155
Leachman Erica 8058
Traveler 124 G D A R
Miss Wix 365 of Mc Cumber
Tehama Bando 155
Rosetta 244 of Mc Cumber

Individual Record	
BW	88
WW	746
305	657
WR	98
ADG	2.98
YW	1140
365	1134
YR	91

Ultrasound Data	
MF	3.87/99
REA	11.40/91
Fat	0.25/89

EPDs		Dam's Production									
BW	WW	Milk	YW	SC	IMF	REA	Fat	%RP	BW	WW	YW
1.5	36	20	63		0.09	-0.02	0.007		6/98	6/101	6/103

Lot 522 - Recommended for use on heifers - A cow - maker sired by Leachman Right Time and out of a super daughter of Mc Cumber 124 Traveler 212. 522 is deep ribbed and thick made. His dam, Rosetta 7106 of Mc

523 MC Cumber Total Value 523

Calved: 01/21/2005

Reg. No. 15050879

Vermilion Dateline 7078
MC Cumber 7111 Total Value
Miss Wix 7111 of Mc Cumber

Connealy Dateline
Vermilion Blackbird 5044
G D A R Traveler 71
Miss Wix 365 of Mc Cumber
R R Traveler 5204
Tehama Eisa Erica Y699
Mc Cumber 124 Traveler 212
Lassie 267 of Mc Cumber

Individual Record	
BW	95
WW	746
305	658
WR	98
ADG	4.20
YW	1300
365	1330
YR	107

Ultrasound Data	
MF	4.29/110
REA	12.20/98
Fat	0.38/136

EPDs		Dam's Production									
BW	WW	Milk	YW	SC	IMF	REA	Fat	%RP	BW	WW	YW
2.0	36	26	69		0.13	-0.02	0.020		4/98	4/100	3/102

Lot 523 - Selling 2/3 interest and full possession - Recommended for use on heifers - This super - complete son of Mc Cumber Total Value will definitely catch your eye. He is very attractive, long bodied, deep ribbed, and thick made. I realize his birth weight is a little high for use on heifers but with an EPD of 2.0, and his dam ratios of 4/98 on birth he should be just fine. His dam is a powerful, easy fleshing daughter of California Traveler that stems from the Lassie cow family. Along with this, 423 scanned an IMF score of 4.29 to ratio 110. **This is one of the best Total Value sons in the sale**, be sure to check him out.



Mc Cumber 7078 VRD²⁰ 524



Miss Wix 5007 of Mc Cumber
Maternal Grand dam of Lot 524

524 MC Cumber 7078 VRD 524

Calved: 01/22/2005 Reg. No. 15050880

Connealy Dateline
Vermilion Dateline 7078
Vermilion Blackbird 5044

Mc Cumber Foundation 701
Miss Wix 0168 of Mc Cumber
Miss Wix 5007 of Mc Cumber

D H D Traveler 6807
Eila Eila of Conanga
Leachman Right Time
Vermilion Blackbird 3525
Mc Cumber 124 Traveler 212
Miss Wix 235 of Mc Cumber
Rito 054 G D A R
Miss Wix 365 of Mc Cumber

Individual Record	
BW	895
WW	828
305	730
WR	108
ADG	3.77
YW	1325
365	1333
YR	107
Ultrasound Data	
MF	3.44/88
REA	13.40/107
Fat	0.34/121

EPDs								Dam's Production			
BW	WW	Milk	YW	SC	IMF	REA	Fat	%RP	BW	WW	YW
4.1	44	23	83		-0.06	0.45	0.019		3/104	3/107	3/108

Lot 524 - This powerhouse son of VRD covers all the bases. He weaned off at 828lbs. with a 205 day weight of 730 lbs. to ratio 108. He gained 3.77lbs./day on feed and weighed off test at 1325lbs., with a 365 day weight of 1333lbs. to ratio 107. His Mc Cumber Foundation dam has been extremely productive with WWR 3/107, YWR 3/108, IMF 2/119, REA 2/107. She is also a granddaughter of Miss Wix 365 of Mc Cumber, and has produced one full brother to 524 working for Larry Kraft at Barton.



Mc Cumber Total Value³ 523

525 MC Cumber Right Time 525

Calved: 01/22/2005 Reg. No. 15050881

N Bar Emulation EXT
Leachman Right Time
Leachman Erica 0025

Mc Cumber Mr Wix 7104
Rosetta 137 of Mc Cumber
Rosetta 9147 of Mc Cumber

Emulation N Bar 5522
N Bar Primrose 2424
Tehama Bando 155
Leachman Erica 8058
Mr Wix of Mc Cumber 204
B Pride 488 of Mc Cumber
Mathew of Mc Cumber HC 6365
Rosetta 601 of Mc Cumber

Individual Record	
BW	96
WW	784
305	710
WR	105
ADG	4.02
YW	1295
365	1329
YR	106
Ultrasound Data	
MF	4.96/127
REA	10.50/84
Fat	0.39/139

EPDs								Dam's Production			
BW	WW	Milk	YW	SC	IMF	REA	Fat	%RP	BW	WW	YW
3.1	39	26	78		0.29	-0.19	0.034		3/104	3/110	3/110

Lot 525 - This rangy son of Right Time scanned the top IMF score of the bull calf crop to ratio 127. His pathfinder dam stems from a long line of top producing Rosetta cows.
Dam WWR 3/110, YWR 3/110
G.Dam WWR 5/103, YWR 4/104
GG. Dam WWR 6/110, YWR 5/105

527 MC Cumber 9800 Alliance 527

Calved: 01/22/2005 Reg. No. 15050883

Sitz Alliance 6595
Sitz Alliance 9800
Sitz Barbara Perfection 3171

Mc Cumber Foundation 701
Miss Wix 3013 of Mc Cumber
Miss Wix 575 of Mc Cumber

Sitz Traveler 8180
Sitz Barbaramere Jet 2698
G D A R Traveler 71
Sitz Barbara Perfection 2248
Mc Cumber 124 Traveler 212
Miss Wix 235 of Mc Cumber
HBR Rito Bravo 1441
Miss Wix 04 of Mc Cumber

Individual Record	
BW	76
WW	614
305	621
WR	90
ADG	3.36
YW	1058
365	1159
YR	93
Ultrasound Data	
MF	3.74/98
REA	11.20/91
Fat	0.36/138

EPDs								Dam's Production			
BW	WW	Milk	YW	SC	IMF	REA	Fat	%RP	BW	WW	YW
1.2	30	28	59		-0.13	0.05	0.038		1/93	1/90	1/93

Lot 527 - Recommended for use on heifers - The first son of Sitz Alliance 9800. We used 9800 for his calving ease, and ability to sire daughters. His son's are definitely calving ease, and the daughters look very good at this point. 527 is a well made bull with excellent depth of body. His dam is a very good looking daughter of Foundation 701, with an excellent udder, and a lot of volume and capacity.



Mc Cumber 6595 Alliance 531



Miss Wix 2022 of Mc Cumber



Miss Wix 2021 of Mc Cumber



Miss Wix 7111 of Mc Cumber

From top left:

- Dam of Lot 531
- Maternal sister to Dam of Lot 531
- Maternal Grand dam of Lot 531



MC Cumber 3116 VRD 530

Calved: 01/23/2005

Reg. No. 15050886

Vermilion Dateline 7078
 MC Cumber 7078 VRD 3116
 Gale 836 of Mc Cumber
 R R Scotchcap 9440
 Rosetta 9003 of Mc Cumber
 Rosetta 405 of Mc Cumber

Connealy Dateline
 Vermilion Blackbird 5044
 Circle Oak Lucys Boy 625
 Gale 6129 of Mc Cumber
 Scotch Cap
 Blackcap of R R 5367
 Shoshone 247 P J M
 Rosetta 148 of Mc Cumber

Individual Record	
BW	97
WW	820
305	725
WR	108
ADG	4.02
YW	1350
365	1368
WR	110

Ultrasound Data	
MF	4.36/112
REA	12.20/98
Fat	0.31/111

EPDs								
BW	WW	Milk	YW	SC	IMF	REA	Fat	%RP
4.3	47	21	85		0.12	0.00	0.012	

Dam's Production		
BW	WW	YW
5/97	5/102	5/105

Lot 530 - This performance powerhouse ranks near the top in all measurable performance traits. He weaned off at 820lbs. with a 205 day weight of 725 to ratio 108, gained over 4.00 lbs./day and weighed off test at 1350lbs. with a 365 day weight of 1368lbs. to ratio 110. **This cowboy's bull is thick and deep in all the right places.** His dam is a maternal sister to Mc Cumber Stretch 604 and sired by 9440. She is deep bodied, easy fleshing and has a well attached udder. She has already produced one son that sold through our sale to Larry Kraft. **This bull should add pounds to your pay weight.**



Mc Cumber 7078 VRD 3116

Brother to Lot 530



531 MC Cumber 6595 Alliance 531

Calved: 01/23/2005

Reg. No. 15050887

Sitz Traveler 8180
 Sitz Alliance 6595
 Sitz Barbaramere Jet 2698
 Leachman Right Time
 Miss Wix 2022 HC Mc Cumber
 Miss Wix 7111 of Mc Cumber

G D A R Traveler 71
 Sitz Everelda Entense 1137
 3 Bar Spike 1766
 Sitz Baramere Jet 155
 N Bar Emulation EXT
 Leachman Erica 0025
 G D A R Traveler 71
 Miss Wix 365 of Mc Cumber

Individual Record	
BW	85
WW	786
305	736
WR	109
ADG	3.67
YW	1270
365	1323
WR	106

EPDs								Dam's Production			
BW	WW	Milk	YW	SC	IMF	REA	Fat	%RP	BW	WW	YW
1.5	46	30	82		0.12	0.06	0.017		2/91	2/109	2/105

Ultrasound Data	
MF	4.06/104
REA	11.50/92
Fat	0.25/89

Lot 531 - Selling 2/3 interest and full possession - Recommended for use on heifers - The one and only son of Sitz Alliance 6595 selling in this sale. When you talk about cow-makers, this bull certainly fits the bill. He not only should sire excellent females, but he has excellent performance and EPDs as well. He ratioed 109 for weaning, 102 on ADG, and 106 at a year, along with this his \$weaning index of 28.12 ranks in the top 5% of non-parent Angus bulls. 531 is extremely deep bodied, wide made, and good fronted. His dam Miss Wix 2022 of Mc Cumber has been proclaimed as one of the best cows in the Angus breed, by astute cattlemen that have seen her. She looks like a cow is supposed to look. Miss Wix 2022 is feminine through her head and neck, she is deep bodied, from her fore rib to flank, is wide based, and has excellent feet. Her udder is absolutely flawless with small well placed teats, a super attachment, and her udder is clean without excess hair, or false teats. She has settled AI every year, and has a WWR of 2/109. Her full sister was the Co - top selling lot in our 2003 Cow Sale selling to Fortune's Rafter U Cross Ranch in SD for \$15,000, and has since entered their embryo program. The dam of 2022 is Miss Wix 7111 of Mc Cumber, she is the dam of Mc Cumber 7111 Total Value, and has been a mainstay in our embryo program. **The top producing cows never end in this bull's pedigree!!**

532 MC Cumber Total Value 532

Calved: 01/23/2005

Reg. No. 15050888

Vermilion Dateline 7078
MC Cumber 7111 Total Value
Miss Wix 7111 of Mc Cumber

Connealy Dateline
Vermilion Blackbird 5044
G D A R Traveler 71
Miss Wix 365 of Mc Cumber
N Bar Emulation EXT
Leachman Erica 0025
Mr Wix of Mc Cumber 204
Lassie 5128 of Mc Cumber

Individual Record	
BW	84
WW	758
305	748
WR	109
ADG	3.38
YW	1204
365	1289
YR	104
Ultrasound Data	
MF	4.15/109
REA	11.30/92
Fat	0.26/100

EPDs								Dam's Production		
BW	WW	Milk	YW	SC	IMF	REA	Fat %RP	BW	WW	YW
2.9	45	26	75		0.12	0.08	0.017	1/102	1/109	1/104

Lot 532 - Recommended for use on heifers - This calving ease bull has length, style, and thickness. His dam is a super uddered Right Time daughter who stems from a top producing pathfinder dam. 532 had a 205 day weight of 748lbs. to ratio 109 as his dam's first calf. His dam traces back to the Grand dam of lot 504, making him very closely related to that top bull.



SAV 8180 Traveler 004

Sire of Lot 536



Gale 9120 of Mc Cumber

Full Sister to Dam of Lot 536

536 MC Cumber 004 Traveler 536

Calved: 01/24/2005

Reg. No. 15050892

Sitz Traveler 8180
SAV 8180 Traveler 004
Boyd Forever Lady 8003

G D A R Traveler 71
Sitz Everelda Entense 1137
A A R New Trend
S V F Forever Lady 57D
Mc Cumber 124 Traveler 212
Miss Wix 235 of Mc Cumber
Mc Cumber 054 Rito 326
Gale 607 of Mc Cumber

Individual Record	
BW	93
WW	744
305	739
WR	108
ADG	3.24
YW	1172
365	1257
YR	102
Ultrasound Data	
MF	3.75/99
REA	11.90/97
Fat	0.33/127

EPDs								Dam's Production		
BW	WW	Milk	YW	SC	IMF	REA	Fat %RP	BW	WW	YW
4.2	42	25	72		0.02	0.16	0.021	1/112	1/108	1/102

Lot 536 - This Traveler 004 son really pushed the scale down at weaning. He had a 205 day weight of 739 lbs. to ratio 108 as his dam's first calf. 536 is long, smooth and excellent on his feet and legs. His dam is a beautiful, perfect uddered daughter of Mc Cumber Foundation 701 that comes from the Gale cow family. Her line of cows includes 4 consecutive generations of pathfinders, and her dam was an excellent daughter of Mc Cumber 054 Rito 326 that sold in our 2003 Cow sale. Gale 3109's full sister is Gale 9120 of Mc Cumber who produced the high gaining bull lot 578 in this sale.



Mc Cumber 24J Right Time 539



BT Right Time 24J

Sire to Lot 539

539 MC Cumber 24J Right Time 539

Calved: 01/25/2005

Reg. No. 15050895

Leachman Right Time
BT Right Time 24J
Sitz Everelda Entense 1905

N Bar Emulation EXT
Leachman Erica 0025
Traveler 124 G D A R
Sitz Everelda Entense 1791
Mc Cumber Equator 6122
Rosetta 421 of Mc Cumber
Sitz S L S Rainmaker 7596
Miss Wix 843 of Mc Cumber

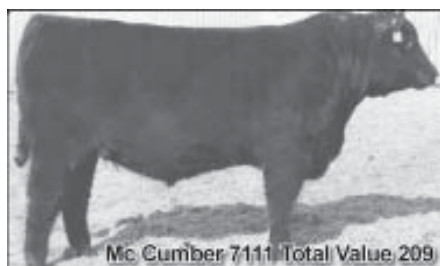
Individual Record	
BW	75
WW	758
305	750
WR	109
ADG	3.52
YW	1222
365	1313
YR	106
Ultrasound Data	
MF	4.04/106
REA	12.40/101
Fat	0.28/108

Mc Cumber 6122 Equator 8113
Miss Wix 343 of Mc Cumber
Miss Wix 0104 of Mc Cumber

EPDs								Dam's Production		
BW	WW	Milk	YW	SC	IMF	REA	Fat %RP	BW	WW	YW
1.6	46	24	81		0.06	0.35	0.014	1/92	1/109	1/106

Lot 539 - Selling 2/3 interest and full possession - Recommended for use on heifers - 539 puts a lot of things together very well. After starting at 75lbs. for birth, this bull went on to post a 205 day weight of 750lbs. to ratio 109 as his dam's first calf. He continued to excel and posted a 365 day weight of 1313lbs. to ratio 106. He combines this with ratios of IMF 106, and REA 101. His \$weaning index of 27.50 ranks him in the top 10% of the breed for non - parent Angus bulls. Not only does 539 put the numbers together very well. He is also tremendous from a phenotypic stand point as well, he is super thick, with a big top, and very expressive hind quarter. He moves out free and easy and tracks perfectly. His dam by Mc Cumber 6122 Equator 8113 is perfect uddered and moderate framed. She comes from a line of cows that include 5 consecutive generations of pathfinders. The 8113 daughters at Redland Angus Ranch in WY, produced several of the top bulls in their sale, which included the top selling bull. **You don't need to be a statistician to find this bull. He has that herd bull look.**

Notes



Mc Cumber 7111 Total Value 209



Miss Wix 7111 of Mc Cumber

From top: Sire and Paternal Grand dam of Lot 541



Mc Cumber Total Value 541

 **541 MC Cumber Total Value 541**

Calved: 01/25/2005

Reg. No. 15050897

Vermilion Dateline 7078
 MC Cumber 7111 Total Value
 Miss Wix 7111 of Mc Cumber
 Connealy Dateline
 Vermilion Blackbird 5044
 G D A R Traveler 71
 Miss Wix 365 of Mc Cumber
 V D A R Rito 953
 Gale 607 of Mc Cumber
 Mc Cumber 953 Rito 420
 Miss Wix 802 of Mc Cumber
 Miss Wix 6108 of Mc Cumber
 Mc Cumber 054 Rito 326
 Miss Wix 305 of Best Angus

Individual Record	
BW	93
WW	822
305	729
WR	108
ADG	3.66
YW	1305
365	1315
YR	105

Ultrasound Data	
IMF	3.59/92
REA	13.00/104
Fat	0.25/89

EPDs							
BW	WW	Milk	YW	SC	IMF	REA	Fat %RP
1.6	39	25	65		-0.06	0.24	0.012

Dam's Production		
BW	WW	YW
6/96	6/100	5/103

Lot 541 - Recommended for use on heifers - This 822 lb. weaning weight bull, not only should sire light birth weights, but **produce those heavy weaning, market topping steer calves**. He combines light birth with excellent performance, and came off test at 1305 lbs. His dam is a high volume, good milking daughter of Mc Cumber 953 Rito 420. She holds her flesh and breeds back well having settled AI every year since her first calf. She has produced three sons that have sold through past bull sales to Ron Ivers, NE, Bill Striefel, ND, and Ron Slaubaugh, ND. Her only daughter sold to Skip Riddell in TX through our 2000 Cow Sale.

 **543 MC Cumber 383 Tradition 543**

Calved: 01/26/2005

Reg. No. 15050899

Leachman Right Time
 MC Cumber Tradition 383
 Lassie 7015 of Mc Cumber
 N Bar Emulation EXT
 Leachman Erica 0025
 Mc Cumber 124 Traveler 212
 Lassie 648 of Mc Cumber
 A A R New Trend
 BT New Trend 172K
 Miss Wix 288 of Mc Cumber
 Miss Wix 554 of Mc Cumber
 BT Everelda Entense 57D
 Mc Cumber Stretch 604
 Miss Wix 063 of Mc Cumber

Individual Record	
BW	93
WW	800
305	753
WR	112
ADG	3.71
YW	1290
365	1347
YR	108

EPDs							
BW	WW	Milk	YW	SC	IMF	REA	Fat %RP
3.6	40	26	70		-0.01	0.28	0.028

Dam's Production		
BW	WW	YW
1/102	1/112	1/108

Ultrasound Data	
IMF	3.72/95
REA	13.30/106
Fat	0.37/132

Lot 543 - I he first son of our up and coming herd sire Mc Cumber Tradition 383. Tradition has done an outstanding job so far with 6 bull calves ratioing 103 at weaning and 104 at yearling. His ultrasound is equally impressive with 6 bull calves at 101 for IMF, and 103 for REA. Get in on the ground floor with his sons. 543 is the largest framed son of Mc Cumber Tradition 383, but he still has a lot to him. **543 has a lot of muscle, and is super on his feet and legs**. He pushed the scale down at 800 lbs. at weaning to ratio 112, and came off test at nearly 1300lbs. His dam comes from the same branch of the Miss Wix cow family that produced Miss Wix 235 of Mc Cumber, who is the dam of Mc Cumber Foundation 701.

 **548 MC Cumber 362 Equator 548**

Calved: 01/27/2005

Reg. No. 15050904

Mc Cumber 6122 Equator 8113
 MC Cumber 8113 Equator 362
 Lassie 913 of Mc Cumber
 Circle Oak Lucys Boy 625
 Erianna 825 of Mc Cumber
 Erianna 6148 of Mc Cumber
 Mc Cumber Equator 6122
 Rosetta 421 of Mc Cumber
 Mc Cumber Foundation 701
 Lassie 587 of Mc Cumber
 V D A R Lucys Boy
 Homestretch Miss Wix 299
 Mc Cumber 054 Rito 326
 Erianna 278 of Mc Cumber

Individual Record	
BW	83
WW	700
305	624
WR	93
ADG	3.42
YW	1152
365	1171
YR	94

EPDs							
BW	WW	Milk	YW	SC	IMF	REA	Fat %RP
.7	28	23	57		-0.09	0.20	0.006

Dam's Production		
BW	WW	YW
6/92	6/96	4/96

Ultrasound Data	
IMF	3.55/91
REA	12.80/102
Fat	0.22/79

Lot 548 - Recommended for use on heifers - This long, smooth made son of Mc Cumber 8113 Equator 362, who sold to Clark Farms in GA, offers **sure - fire calving ease**, with above average muscle. His dam further enforces the calving ease with a BWR of 6/92. She has also produced 1 graduate of our bull sale and 3 daughters working in other registered herds around the country.

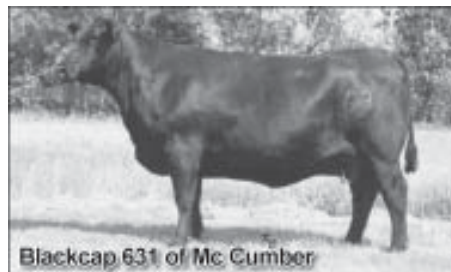


Mc Cumber Foundation 701

Great Grand sire of Lot 548



Mc Cumber Tradition 383



Blackcap 631 of Mc Cumber

From top: Sire and Maternal Grand dam of Lot 549



Mc Cumber 383 Tradition 549

 549 MC Cumber 383 Tradition 549

Calved: 01/27/2005

Reg. No. 15050905

Leachman Right Time
 MC Cumber Tradition 383
 Lassie 7015 of Mc Cumber
 Mc Cumber 953 Rito 420
 Blackcap 807 of Mc Cumber
 Blackcap 631 of Mc Cumber

N Bar Emulation EXT
 Leachman Erica 0025
 Mc Cumber 124 Traveler 212
 Lassie 648 of Mc Cumber
 V D A R Rito 953
 Gale 607 of Mc Cumber
 Mc Cumber 124 Traveler 212
 Blackcap 231 of Mc Cumber

Individual Record	
BW	93
WW	806
305	718
WR	107
ADG	4.01
YW	1335
365	1360
YR	109

Ultrasound Data	
MF	4.17/107
RF	13.40/107
Fat	0.40/143

EPDs								Dam's Production		
BW	WW	Milk	YW	SC	IMF	REA	Fat %RP	BW	WW	YW
1.6	34	26	65		-0.05	0.38	0.024	5/103	5/107	5/103

Lot 549 - Selling 2/3 interest and full possession - Recommended for use on heifers - This tank, will impress you with his overall mass, muscle, and soundness, in the right kind of package. This herd sire prospect crushed the scale at 806 lbs. at weaning to ratio 107, gained over 4.00 lbs./day and weighed off test at 1335 lbs. with a 365 day weight of 1360 lbs. to ratio 109. He combined this with an IMF ratio of 107 and a REA ratio 107. 549 has been a favorite since birth, and is the type of bull we strive to produce. He defines efficiency and appears to be the kind of bull that will work under any environment. His dam is a deep bodied, easy fleshing, good milking daughter of Mc Cumber 953 Rito 420, and his Grand Dam is Blackcap 631 of Mc Cumber, who sold through our 2003 cow sale as a feature to Dr. Long in MO. The stayability, and production of the cows behind 549 have been outstanding.

Dam WWR 5/107 YWR 5/103
 G Dam WWR 7/102 YWR 5/102 (pathfinder)
 GG Dam WWR 7/105 YWR 6/103 (pathfinder)
 GGG Dam WWR 15/100 YWR 11/101 (One of our best Shoshone Viking daughters)
 GGGG Dam WWR 10/104 YWR 9/104

This bull balances ALL TRAITS, and puts them into an impressive herd bull package.

Notes

 550 MC Cumber 3116 VRD 550

Calved: 01/28/2005

Reg. No. 15050906

Vermilion Dateline 7078
 MC Cumber 7078 VRD 3116
 Gale 836 of Mc Cumber
 Mc Cumber 124 Traveler 212
 Blue Ribbon 870 of Mc Cumber
 Blue Ribbon 467 of Mc Cumber

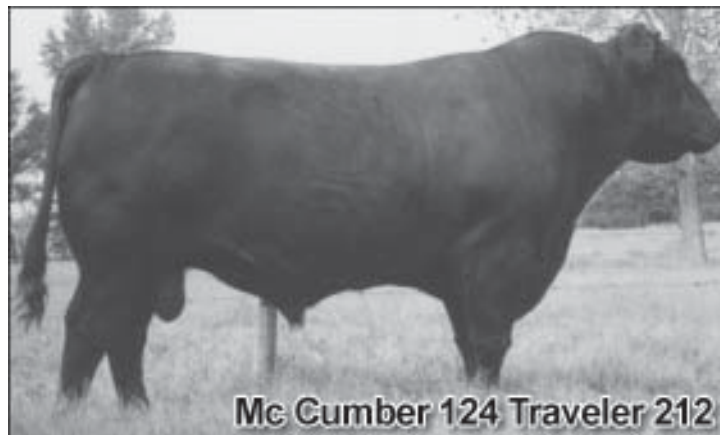
Connealy Dateline
 Vermilion Blackbird 5044
 Circle Oak Lucys Boy 625
 Gale 6129 of Mc Cumber
 Traveler 124 G D A R
 Miss Wix 365 of Mc Cumber
 V D A R Rito 953
 East Fork Blue Ribbon 33

Individual Record	
BW	105
WW	778
305	697
WR	104
ADG	3.48
YW	1238
365	1254
YR	101

Ultrasound Data	
MF	4.05/104
RF	13.00/104
Fat	0.33/118

EPDs								Dam's Production		
BW	WW	Milk	YW	SC	IMF	REA	Fat %RP	BW	WW	YW
5.3	41	23	70		0.11	0.24	0.007	5/104	5/100	4/99

Lot 550 - This long, stout, heavy muscled son of Mc Cumber 7078 VRD 3116, should add pounds to anybody's calf crop. A little more birth weight here, but put him with your cows and he'll be just fine.



Mc Cumber 124 Traveler 212

Maternal Grand sire of Lot 550



Mc Cumber Total Value 551

551 MC Cumber Total Value 551

Calved: 01/28/2005

Reg. No. 15050907

Vermilion Dateline 7078
MC Cumber 7111 Total Value
Miss Wix 7111 of Mc Cumber

Connealy Dateline
Vermilion Blackbird 5044
G D A R Traveler 71
Miss Wix 365 of Mc Cumber
D H D Traveler 6807
Sitz Everelda Entense 1137
P J M Power 291
B Pride 134 of Mc Cumber

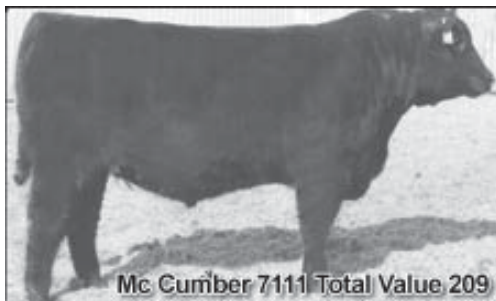
Individual Record	
GW	86
WW	818
306	729
WR	108
ADG	3.73
YW	1310
365	1326
YR	106

EPDs							
BW	WW	Milk	YW	SC	IMF	REA	Fat %RP
2.8	41	25	71		0.03	0.16	0.013

Dam's Production			
BW	WW	YW	YR
5/99	5/107	4/104	

Ultrasound Data	
MF	Fat
3.61/93	12.60/101
	0.35/125

Lot 551 - Selling 2/3 interest and full possession - Recommended for use on larger framed heifers - This herd sire prospect is as wide as a truck. He is wide based, deep bodied, and heavy muscled down his top out into a big, expressive rump. 551 has a big, perfectly shaped hoof, with an excellent heal. He jumped through all the hoops weaning off at 818 lbs., gaining 3.73lbs./day and weighing off test at 1310lbs. with a 365 day weight of 1326lbs. to ratio 106. **It is hard to find a hole in this bull.** Along with all of this he combines the Miss Wix, Everelda Entense, and B Pride cow families. His highly productive pathfinder dam typifies what an Angus cow should be. She is a moderate framed, high volume cow, that is stout, correct, and extremely wide. Her udder is excellent, and she is super sound on her feet and legs. She **consistently** produces top ratioing calves, **while settling first service AI her entire life.** B Pride 9124 of Mc Cumber has absolutely gotten the job done, with a BWR 5/99, WWR, 5/107, YWR 4/104, IMF 3/103, and REA 3/103. **She is a commercial oriented, problem - free, top producing, highly fertile female, the kind we like to keep around here.** 551 will be collected and used back in the cowherd. **He is not extreme or an outlier in any one trait. He puts everything together as well as any bull in this sale, for that matter, as well as any bull we have produced.**



Mc Cumber 7111 Total Value 209

Sire of Lot 551

552 MC Cumber New Day 552

Calved: 01/28/2005

Reg. No. 15050908

AAR New Trend
Boyd New Day 8005
S V F Forever Lady 57D

V D A R Shoshone 548
Donna AAR 74
Leachman Right Time
S V F Forever Lady 1128
Tehama Bando 155
Miss Wix 204 of Mc Cumber
Mc Cumber 054 Rito 326
Lassie 272 of Mc Cumber

Individual Record	
GW	85
WW	718
306	641
WR	95
ADG	3.83
YW	1224
365	1254
YR	100

EPDs							
BW	WW	Milk	YW	SC	IMF	REA	Fat %RP
1.2	37	26	78		0.00	0.24	-0.009

Dam's Production			
BW	WW	YW	YR
6/98	6/104	4/103	

Ultrasound Data	
MF	Fat
3.44/88	11.90/95
	0.13/46

Lot 552 - Recommended for use on heifers - This New Day should be a sure thing on heifers with a BW EPD of 1.2. His pathfinder dam is a deep bodied easy fleshing daughter of Mr. Wix of Mc Cumber 204. 552 also had one of the top ADG, with a gain ratio of 107.

553 MC Cumber 004 Traveler 553

Calved: 01/29/2005

Reg. No. 15050909

Sitz Traveler 8180
S A V 8180 Traveler 004
Boyd Forever Lady 8003

G D A R Traveler 71
Sitz Everelda Entense 1137
AAR New Trend
S V F Forever Lady 57D
G A R Precision 1680
Sitz Everelda Entense 1137
Mc Cumber 124 Traveler 212
Blackcap 231 of Mc Cumber

Individual Record	
GW	88
WW	686
306	694
WR	101
ADG	3.61
YW	1162
365	1272
YR	103

EPDs							
BW	WW	Milk	YW	SC	IMF	REA	Fat %RP
4.0	47	27	87		-0.03	0.53	-0.007

Dam's Production			
BW	WW	YW	YR
1/106	1/101	1/103	

Ultrasound Data	
MF	Fat
3.49/92	13.30/108
	0.20/77

Lot 553 - An extremely heavy muscled, well made son of Traveler 004. Came off his dam with a weaning ratio of 104. He puts together a nice set of numbers with a WW EPD of +47, and a YW EPD of +87 which both rank in the top 15% of non - parent Angus bulls in the breed and his REA EPD of +.53 ranks in the top 10% of non - parent Angus bulls. His dam is a super uddered, moderate framed daughter of the Genex sire Ranger G 1720, and out of Blackcap 631 of Mc Cumber, who is also the Grand dam of lot 549 in this sale. Blackcap 3167 of Mc Cumber has an REA EPD of +.50 which ranks in the top 1% of Current dams in the Angus breed. If you would like to introduce some carcass genetics into a set of cows check out this bull.

554 MC Cumber 383 Tradition 554

Calved: 01/29/2005

Reg. No. 15050910

Leachman Right Time
 MC Cumber Tradition 383
 Lassie 7015 of Mc Cumber

Connealy Frontline
 Miss Wix 2035 of Mc Cumber
 Miss Wix 5007 of Mc Cumber

N Bar Emulation EXT
 Leachman Erica 0025
 Mc Cumber 124 Traveler 212
 Lassie 648 of Mc Cumber
 Connealy Dateline
 Pleasant Pill of Conanga
 Rito 054 G D A R
 Miss Wix 365 of Mc Cumber

Individual Record	
BW	75
WW	710
305	677
WR	101
ADG	3.53
YW	1176
365	1242
WR	100
Ultrasound Data	
MF	3.99/102
REA	11.60/93
Fat	0.34/121

EPDs				Dam's Production							
BW	WW	Milk	YW	SC	IMF	REA	Fat	%RP	BW	WW	YW
0.7	36	23	68		-0.04	0.08	0.025		2/91	2/101	2/100

Lot 554 - Recommended for use on heifers - With a birth weight of 75 lbs., and a BW EPD of +.7, this moderate framed, deep bodied, heavy muscled bull should be super on heifers. His dam is a deep bodied, easy fleshing daughter of Miss Wix 5007 of Mc Cumber. 5007 is the full sister to Miss Wix 903 of Mc Cumber, and Miss Wix 303 of Mc Cumber. Her full sibs also include Mc Cumber 054 Rito 326, Mc Cumber 054 Rito 5009, and Matthew of Mc Cumber. **This bull is a chunk.**



Miss Wix 5007 of Mc Cumber
 Maternal Grand dam of Lots 554 & 555

555 MC Cumber Total Value 555

Calved: 01/29/2005

Reg. No. 15050911

Vermilion Dateline 7078
 MC Cumber 7111 Total Value
 Miss Wix 7111 of Mc Cumber

BT Right Time 24J
 Miss Wix 3154 of Mc Cumber
 Miss Wix 5007 of Mc Cumber

Connealy Dateline
 Vermilion Blackbird 5044
 G D A R Traveler 71
 Miss Wix 365 of Mc Cumber
 Leachman Right Time
 Sitz Everelda Entense 1905
 Rito 054 G D A R
 Miss Wix 365 of Mc Cumber

Individual Record	
BW	75
WW	642
305	654
WR	95
ADG	3.39
YW	1090
365	1196
WR	97
Ultrasound Data	
MF	3.89/102
REA	11.50/93
Fat	0.35/135

EPDs				Dam's Production							
BW	WW	Milk	YW	SC	IMF	REA	Fat	%RP	BW	WW	YW
1.7	37	24	66		0.08	0.23	0.028		1/92	1/95	1/97

Lot 555 - Recommended for use on heifers - This moderate framed, thick made son of Total Value, should be a sure thing on heifers. His dam is a top of the line daughter of BT Right Time 24J, and also a daughter of Miss Wix 5007 of Mc Cumber. The dam of 555 is moderate framed, easy fleshing, and has an excellent udder. 555 doubles up the Miss Wix family on both the top and bottom side of the pedigree, by combining the maternal sister Miss Wix 7111 of Mc Cumber, and Miss Wix 5007 of Mc Cumber. **555 is the type of bull that could handle harsh range conditions with ease, because of his early maturity, moderate frame, deep body, and natural thickness.** His dam is currently nursing a herd sire prospect by Sitz Tradition 8702.



Gale 045 of Mc Cumber
 Foundation Gale



Gale 662 of Mc Cumber
 Maternal Grand dam of Lot 556



Mc Cumber 383 Tradition 554

556 MC Cumber 2700 RT Time 556

Calved: 01/29/2005

Reg. No. 15050912

N Bar Emulation EXT
 Leachman Right Time
 Leachman Erica 0025

Emulation N Bar 5522
 N Bar Primrose 2424
 Tehama Bando 155
 Leachman Erica 8058
 Papa Equator 2928
 Rosetta 048 of Mc Cumber
 Mc Cumber 124 Traveler 212
 Gale 345 of Mc Cumber

Mc Cumber Powertrain HC 1025
 Gale 1124 of Mc Cumber
 Gale 662 of Mc Cumber

Individual Record	
BW	103
WW	820
305	753
WR	112
ADG	3.67
YW	1305
365	1340
WR	108
Ultrasound Data	
MF	4.32/111
REA	12.40/99
Fat	0.22/79

EPDs				Dam's Production							
BW	WW	Milk	YW	SC	IMF	REA	Fat	%RP	BW	WW	YW
4.8	46	24	80		0.14	0.27	0.014		3/107	3/113	3/106

Lot 556 - Selling 2/3 interest and full possession - 556 will catch your eye when you enter the pen. He is long, smooth, and attractive, however he doesn't sacrifice depth of body, or thickness. 556 pushed the scale down at 820 lbs. with a 205 day weight of 753 to ratio 112 at weaning, gained 3.67lbs./day and weighed off test at 1305 lbs., with a 365 day weight of 1340 to ratio 108. He combined this with an IMF ratio of 111, while ratioing 79 on Rib Fat. His beautiful, feminine, super uddered pathfinder dam is deep bodied and easy fleshing. **Including Gale 1124 of Mc Cumber, 7 of 8 generations, tracing back to our original Gale cow are pathfinder cows. This would be nearly unheard of in the Angus breed.** 1124 obtained pathfinder status this year with a WWR 3/113, and has settled AI every year since her first calf. Her only other son sold in a previous sale to Jim Mongeon in Rolette. However she is currently nursing a super star bull calf by Traveler 004.

556 is the result of stacking multiple generations of outstanding females, that have had the ability to stand the test of time, and not only be long lived, but fertile, sound, and productive. 556 IS A HERD BUILDER, the females should be outstanding, with out sacrificing the bulls.



Mc Cumber 2700 RT Time 556

558 MC Cumber 9800 Alliance 558

Calved: 01/30/2005

Reg. No. 15050914

Sitz Alliance 6595	Sitz Traveler 8180
Sitz Alliance 9800	Sitz Barbaramere Jet 2698
Sitz Barbara Perfection 3171	G D A R Traveler 71
	Sitz Barbara Perfection 2248
	Connealy Dateline
Vermilion Dateline 7078	Vermilion Blackbird 5044
Miss Wix 203 of Mc Cumber	Rito 054 G D A R
Miss Wix 5007 of Mc Cumber	Miss Wix 365 of Mc Cumber

Individual Record	
BW	81
WW	694
205	665
WR	99
ADG	3.50
YW	1156
365	1225
YR	98

Ultrasound Data	
MF	3.27/84
REA	12.30/98
Fat	0.40/143

EPDs				Dam's Production						
BW	WW	Milk	YW	SC	IMF	REA	Fat %RP	BW	WW	YW
0.4	39	30	73		-0.18	0.37	0.027	2/94	2/98	2/102

Lot 558 - Selling 2/3 interest and full possession - Recommended for use on heifers - This calving ease herd bull prospect, offers elite calving ease, and above breed average growth. 558 is a super correct, deep bodied, naturally thick bull. His dam is an outstanding, moderate framed, good uddered daughter of VRD. She was a standout in her calf crop, and has already produced one herd sire selling to Koudelka Angus Ranch in Idaho for \$5250 through last year's bull sale. Her REA EPD of +.64 ranks her in the top 1% of current dams, and 558's \$Weaning Index of 27.15 ranks him in the top 10% of non - parent bulls.



Mc Cumber 7078 VRD 559

559 MC Cumber 7078 VRD 559

Calved: 01/30/2005

Reg. No. 15050915

Connealy Dateline	D H D Traveler 6807
Vermilion Dateline 7078	Eila Eila of Conanga
Vermilion Blackbird 5044	Leachman Right Time
	Vermilion Blackbird 3525
	Mc Cumber 124 Traveler 212
Mc Cumber Foundation 701	Miss Wix 235 of Mc Cumber
Lady Barbola 171 Mc Cumber	G D A R Gold Nugget 766
Lady Barbola 684 Mc Cumber	G D A R Lady Barbola 4186

Individual Record	
BW	105
WW	806
205	742
WR	110
ADG	4.08
YW	1345
365	1395
YR	112

Ultrasound Data	
MF	3.85/99
REA	12.30/98
Fat	0.27/96

EPDs				Dam's Production						
BW	WW	Milk	YW	SC	IMF	REA	Fat %RP	BW	WW	YW
5.6	49	22	90		-0.08	0.19	0.001	3/101	3/104	3/103

Lot 559 - Selling 2/3 interest and full possession - The VRD X Foundation mating has been very successful, and this bull is no exception. This **genuine beef bull** has excelled from weaning to yearling. He weaned off his outstanding Mc Cumber Foundation 701 dam at 806 lbs. with a 205 day weight of 742 to ratio 110. He gained 4.08lbs./day and weighed off test at 1345 lbs. with a 365 day weight of 1395 to ratio 112. His WW and YW EPDs rank in the upper percentiles of the Angus breed, and he is one of the best VRD sons we have produced.

Heavy muscled, wide based, thick butted, and deep bodied best describes this bull. He looks like a beef bull is supposed to look like.

His wonderful dam has already produced 2 daughters that have been retained in the herd and this is her first son to sell, and is nursing another herd sire prospect by Mc Cumber 7078 VRD 3116. She just missed making pathfinder with ratio's of WWR 3/104, and YWR 3/103.



Mc Cumber 9800 Alliance 558

560 MC Cumber 9800 Alliance 560

Calved: 01/30/2005

Reg. No. 15050916

Sitz Alliance 6595	Sitz Traveler 8180
Sitz Alliance 9800	Sitz Barbaramere Jet 2698
Sitz Barbara Perfection 3171	G D A R Traveler 71
	Sitz Barbara Perfection 2248
	A A R New Trend
BT New Trend 172K	BT Everelda Entense 57D
Miss Wix 398 of Mc Cumber	Mc Cumber 124 Traveler 212
Miss Wix 7007 of Mc Cumber	Miss Wix 030 of Mc Cumber

Individual Record	
BW	77
WW	752
205	752
WR	109
ADG	3.29
YW	1186
365	1278
YR	103

Ultrasound Data	
MF	3.84/101
REA	12.00/98
Fat	0.23/88

EPDs				Dam's Production						
BW	WW	Milk	YW	SC	IMF	REA	Fat %RP	BW	WW	YW
1.0	40	37	66		0.03	0.20	0.023	1/94	1/109	1/103

Lot 560 - Selling 2/3 interest and full possession - Recommended for use on heifers - This easy calving, cow - maker has a tremendous maternal heritage. His Dam is a maternal sister to last year's 2nd High selling bull Mc Cumber Total Value 449, who is proving to be an excellent calving ease bull, with no calving problems on first calf heifers. 560 defies the antagonisms with only a 77lb. birth weight he went on to wean at 752lbs. to ratio 109 as his dam's first calf. His \$weaning index is the highest of the calf crop at 29.13, and this ranks in the top 2% of non - parent Angus bulls in the breed. **The pedigree on 560 is stacked with outstanding cows.** He combines the foundation Miss Wix cows Miss Wix 365 of Mc Cumber and Miss Wix 235 of Mc Cumber. He is also double bred to the Everelda Entense family stacking Everelda Entense 1137, and 1905. **For calving ease and cow making ability look no further.**



Mc Cumber Total Value 449

Maternal Brother to Dam of Lot 560



Mc Cumber 7078 VRD 569

565 MC Cumber Right Time 565

Calved: 01/31/2005

Reg. No. 15050920

N Bar Emulation EXT
Leachman Right Time
Leachman Erica 0025

Hilltop Rito H218
Lassie 0139 of Mc Cumber
Lassie 708 of Mc Cumber

Emulation N Bar 5522
N Bar Primrose 2424
Tehama Bando 155
Leachman Erica 8058
Mc Cumber 054 Rito 5009
G P Blackbird 1901
Mr Wix of Mc Cumber 204
Lassie 5128 of Mc Cumber

Individual Record	
DW	90
WW	802
305	721
WR	107
ADG	3.96
YW	1325
365	1355
SR	109

Ultrasound Data	
MF	4.02/103
RF	12.90/103
Fat	0.38/136

EPDs								Dam's Production		
BW	WW	Milk	YW	SC	IMF	REA	Fat %RP	BW	WW	YW
2.8	44	21	83		0.08	0.15	0.034	4/106	4/110	4/109

Lot 565 - Selling 2/3 interest and full possession - Recommended for use on larger framed heifers - This top - notch Right Time son is wide topped, thick butted, and long bodied. His performance was superb, weaning off his pathfinder dam at 802lbs., with a 205 day weight of 721 lbs. to ratio 107 gained 3.96 lbs./day and weighed off test at 1325 lbs. with a 365 day weight of 1355 lbs. to ratio 109. His pathfinder dam is a member of the Lassie cow who has produced several herd bull prospects in this sale. Her production is tremendous with WWR 4/110, YWR 4/109, IMF 4/103, and REA 4/103. She was also produced by a pathfinder dam, that had excellent production ratios as well. Lassie 0139 of Mc Cumber is a deep bodied, thick made cow that maintains her flesh very well. She has only produced bull calves so far and they have sold to Bruce Diebold, Lloyd Hussey, and Arlen Vollmer.



Mc Cumber Right Time 565

569 MC Cumber 7078 VRD 569

Calved: 02/1/2005

Reg. No. 15050924

Connealy Dateline
Vermilion Dateline 7078
Vermilion Blackbird 5044

Mc Cumber Foundation 701
Lassie 913 of Mc Cumber
Lassie 587 of Mc Cumber

D H D Traveler 6807
Eila Eila of Conanga
Leachman Right Time
Vermilion Blackbird 3525
Mc Cumber 124 Traveler 212
Miss Wix 235 of Mc Cumber
Papa Equator 2928
Lassie 648 of Mc Cumber

Individual Record	
DW	98
WW	772
305	696
WR	103
ADG	4.34
YW	1345
365	1390
SR	111

Ultrasound Data	
MF	4.26/109
RF	12.70/102
Fat	0.35/125

EPDs								Dam's Production		
BW	WW	Milk	YW	SC	IMF	REA	Fat %RP	BW	WW	YW
4.9	47	21	96		-0.05	0.30	0.012	5/102	5/103	5/105

Lot 569 - Selling 2/3 interest and full possession - This stand out has all the makings of an excellent herd bull prospect. He is thick, stout, heavy muscled, and deep bodied. He has been a favorite since he was a baby calf, and had the herd bull look when he was born. He was treated for foot rot this summer, but still managed to weigh off the cow at 772 lbs. He really kicked it in gear on test gaining 4.34 lbs./day, and weighing off test at 1345 lbs. with a 365 day weight of 1390 lbs. to ratio 111. His WW and YW EPDs rank him in the top 15%, and top 3% of the breed for non - parent bulls.

His dam has already produced many top progeny with 4 offspring averaging over \$4000. This includes Mc Cumber 8113 Equator 362, which sold to Clark Angus in GA for \$7000, as a feature of the 2004 bull sale. She also produced one daughter that sold to Beartooth Ranch in MT through our 2003 cow sale, and two more sons that sold to Rick Slaubaugh, and Joe Bohl. Her Dam who achieved pathfinder status, sold as a sale feature for \$6000 through our 2003 cow sale. Lassie 587 of Mc Cumber is a very impressive daughter of Papa Equator. This same branch of the Lassie family also produced Mc Cumber Tradition 383, who sold for \$10,750 to Ed and Lori Williams of Quitman MS.

This is one of the best VRD son's we've sold, make sure to check him out!!!



Lassie 587 of Mc Cumber

Maternal Grand dam of Lot 569



MC Cumber 7078 VRD 571

Calved: 02/1/2005

Reg. No. 15050924

Connealy Dateline
Vermilion Dateline 7078
Vermilion Blackbird 5044

D H D Traveler 6807
Eila Eila of Conanga
Leachman Right Time
Vermilion Blackbird 3525

Mc Cumber Foundation 701
Miss Wix 030 of Mc Cumber
Miss Wix 714 of Mc Cumber

Mc Cumber 124 Traveler 212
Miss Wix 235 of Mc Cumber
Mr Wix of Mc Cumber 204
Miss Wix 5146 of Mc Cumber

Individual Record	
BW	93
WW	676
205	611
WR	91
ADG	3.67
YW	1160
365	1198
YR	96
Ultrasound Data	
MF	3.89/100
REA	11.40/91
Fat	0.15/54

EPDs					Dam's Production		
BW	WW	Milk	YW	SC	IMF	REA	Fat %RP
3.9	39	19	78		-0.03	0.07	-0.009

Dam's Production		
BW	WW	YW
3/101	3/96	3/98

Lot 571 - This heavy muscled, deep bodied, moderate framed VRD son was produced by a super daughter of Mc Cumber Foundation 701. The VRD's are some of the highest performing cattle the breed has to offer. **They should produce stout made, heavy weaning calves that add dollars to your pocket.**



Mc Cumber 7078 VRD 578



MC Cumber 7078 VRD 578

Calved: 02/2/2005

Reg. No. 15050932

Connealy Dateline
Vermilion Dateline 7078
Vermilion Blackbird 5044

D H D Traveler 6807
Eila Eila of Conanga
Leachman Right Time
Vermilion Blackbird 3525

Mc Cumber Foundation 701
Gale 9120 of Mc Cumber
Gale 6169 of Mc Cumber

Mc Cumber 124 Traveler 212
Miss Wix 235 of Mc Cumber
Mc Cumber 054 Rito 326
Gale 607 of Mc Cumber

Individual Record	
BW	98
WW	778
205	703
WR	104
ADG	4.64
YW	1390
365	1445
YR	115
Ultrasound Data	
MF	3.64/93
REA	12.70/102
Fat	0.33/118

EPDs					Dam's Production		
BW	WW	Milk	YW	SC	IMF	REA	Fat %RP
4.5	43	21	88		-0.07	0.19	0.015

Dam's Production		
BW	WW	YW
5/102	5/100	5/104

Lot 578 - Selling 2/3 interest and full possession - The VRD X Mc Cumber Foundation 701 combination has hit again. This powerful beef bull is thick, full of muscle and deep bodied. **The nice thing with this mating is that the performance on these bulls comes in the right package**, and the mature size seems to be under control. They grow like crazy to a year of age and then seem to slow down, and mature into medium framed, easy fleshing cattle, that perform well in their environment. 578 came off the cow at 778 lbs. gained 4.64 lbs./day, which was the **#1 High gaining bull on test**, weighed off test at nearly 1400 lbs., with a 365 day weight of 1445 lbs. to ratio 116, and record the second heaviest 365 day weight of the calf crop.

His dam Gale 9120 of Mc Cumber is one of the most impressive females in the herd. She has a tremendous amount of volume and capacity, is a wide made cow that is very easy fleshing. Her udder is excellent and she has a large, well shaped hoof. Her son in last year's sale sold to Joe Bohler, as a sale feature. The line of cows from which she descends is known for their herd bull producing ability, as well as females that are fertile, easy fleshing, and productive. **578 is an excellent herd bull prospect.**



Mc Cumber 2700 Right Time 582



582 MC Cumber 2700 RT Time 582

Calved: 02/3/2005

Reg. No. 15050936

N Bar Emulation EXT
Leachman Right Time
Leachman Erica 0025

Emulation N Bar 5522
N Bar Primrose 2424
Tehama Bando 155
Leachman Erica 8058
Mc Cumber 124 Traveler 212
Miss Wix 235 of Mc Cumber
R R Ferdinand 758D
Gale 5127 of Mc Cumber

Individual Record	
BW	96
WW	788
205	732
WR	109
ADG	3.88
YW	1300
365	1353
YR	109
Ultrasound Data	
MF	4.44/114
REA	13.20/106
Fat	0.59/211

EPDs					Dam's Production		
BW	WW	Milk	YW	SC	IMF	REA	Fat %RP
2.8	40	21	76		0.20	0.24	0.060

Dam's Production		
BW	WW	YW
3/98	3/105	3/105

Lot 582 - Selling 2/3 interest and full possession - Recommended for use on larger framed heifers - Let me have the attention of cattlemen who like **easy fleshing, highly fertile, super uddered, productive, low maintenance cows**. 582 is a long bodied, deep ribbed, thick made bull that has excellent performance. He weaned off his **pathfinder dam** at 788 lbs. with a 205 day weight of 732 lbs. to ratio 109, gained 3.88 lbs./day to ratio 108, weighed off test at 1300 lbs. with a 365 day weight of 1353 lbs. to ratio 109. Along with this performance he had an IMF ratio of 114, and a REA ratio of 106. Notice the consistency, and balance at every measure.

The Dam of 582, Gale 120 of Mc Cumber is one of the most outstanding cows in our herd, and has already produced one herd bull selling to Jim Sailer of Almont for \$4000. She is nursing another outstanding son already this spring by Traveler 004. His Grand dam has produced 3 sons selling through past sales for an average of \$2616. His Great Grand Dam produced last year's high selling bull at \$12,000 to Hills View Ranch in SD, and has progeny sales on 6 head that average \$4241. Phenotypically Gale 120 is outstanding, she is not only feminine, and has that true Angus head, but she is long bodied, deep ribbed, thick made, and excellent on her feet and legs. The fertility and productivity of this line of cows has been outstanding, **Including 120, her dam, and grand dam they have produced 19 calves, all sired by first service AI, except for one, with no calving assists, and no dead calves ever.** Their production and carcass ultrasound is outstanding as well:

Gale 120 - BWR 3/98, WWR 3/105, YWR 3/105, IMF 3/123, REA 3/99
Gale 839 - BWR 6/97, WWR 6/102, YWR 4/111, IMF 4/111, REA 4/101
Gale 5127 - BWR 8/97, WWR 8/102, YWR 8/103, IMF 9/110, REA 9/103

To produce a **PRACTICAL, PROFITABLE, PROBLEM - FREE** cow herd. Consider this outstanding son of Right Time.



Gale 5127 of Mc Cumber

Maternal Great Grand dam of Lot 582

 **584 MC Cumber 3116 VRD 584**

Calved: 02/4/2005

Reg. No. 15050938

Vermilion Dateline 7078
MC Cumber 7078 VRD 3116
Gale 836 of Mc Cumber

Mr Wix of Mc Cumber 204
Blackcap 088 of Mc Cumber
Blackcap 5126 of Mc Cumber

Connealy Dateline
Vermilion Blackbird 5044
Circle Oak Lucys Boy 625
Gale 6129 of Mc Cumber
Tehama Bando 155
Miss Wix 204 of Mc Cumber
Mc Cumber 054 Rito 326
Blackcap 231 of Mc Cumber

Individual Record	
BW	95
WW	794
205	721
WR	107
ADG	3.64
YW	1275
365	1303
YR	105

Ultrasound Data	
MF	3.95/101
REA	10.90/87
Fat	0.25/89

EPDs							Dam's Production				
BW	WW	Milk	YW	SC	IMF	REA	Fat	%RP	BW	WW	YW
3.4	43	26	75		0.10	-0.08	0.001		4/96	4/104	4/102

Lot 584 - This big, stout son of Mc Cumber 7078 VRD 3116 nearly broke the 800 lb. mark at weaning, and had a 365 day weight of 1303 lbs. to ratio 105 at a year. His dam is an excellent uddered daughter of Mr.Wix of Mc Cumber. She has settled AI every year and produced 2 sons selling through prior sales for an average of \$2750 to L.M. and Bailey Patterson in TX, and Herb Slaubaugh in ND.

 **586 MC Cumber Right Time 586**

Calved: 02/4/2005

Reg. No. 15050940

N Bar Emulation EXT
Leachman Right Time
Leachman Erica 0025

Mc Cumber Powertrain HC 1025
Miss Wix 8167 of Mc Cumber
Miss Wix 461 of Mc Cumber

Emulation N Bar 5522
N Bar Primrose 2424
Tehama Bando 155
Leachman Erica 8058
Papa Equator 2928
Rosetta 048 of Mc Cumber
Mc Cumber 124 Traveler 212
Miss Wix 7109 of Mc Cumber

Individual Record	
BW	99
WW	784
205	712
WR	106
ADG	3.03
YW	1184
365	1197
YR	96

Ultrasound Data	
MF	4.36/112
REA	12.50/100
Fat	0.18/64

EPDs							Dam's Production				
BW	WW	Milk	YW	SC	IMF	REA	Fat	%RP	BW	WW	YW
4.2	44	23	69		0.11	0.23	0.003		6/103	6/108	6/101

Lot 586 - This good scanning, heavy weaning son of Leachman Right Time is long bodied, deep ribbed, and very good on his feet and legs. His pathfinder dam has excellent ratios with WWR 6/108, and YWR 6/101. She has produced 3 sons that have sold through our sales for an average of \$2200 to Carris LaRocque, Joe Bohl, and Ron Sondrol.

 **588 MC Cumber 7078 VRD 588**

Calved: 02/4/2005

Reg. No. 15050942

Connealy Dateline
Vermilion Dateline 7078
Vermilion Blackbird 5044

Circle Oak Lucys Boy 625
Rosetta 1029 of Mc Cumber
Rosetta 405 of Mc Cumber

D H D Traveler 6807
Eila Eila of Conanga
Leachman Right Time
Vermilion Blackbird 3525
V D A R Lucys Boy
Homestretch Miss Wix 299
Shoshone 247 P J M
Rosetta 148 of Mc Cumber

Individual Record	
BW	98
WW	724
205	676
WR	100
ADG	3.53
YW	1190
365	1241
YR	99

Ultrasound Data	
MF	3.64/93
REA	11.90/95
Fat	0.13/46

EPDs							Dam's Production				
BW	WW	Milk	YW	SC	IMF	REA	Fat	%RP	BW	WW	YW
4.1	39	22	75		0.01	0.26	-0.013		3/102	3/106	3/102

Lot 588 - This VRD son is produced from a pathfinder daughter of Rosetta 405 of Mc Cumber. Rosetta 405 is the mother to Mc Cumber Stretch 604, and several other outstanding progeny. His dam Rosetta 1029 of Mc Cumber is a moderate framed, sound footed, good uddered daughter of Circle Oak Lucy Boy 625, who we purchased through the Midland Bull Test. Rosetta 1029 has produced 2 sons that have sold through our bull sale to Bar V Ranch, ND, and David Kraft at Barton.



Mc Cumber 2700 RT Time 589

 **589 MC Cumber 2700 RT Time 589**

Calved: 02/4/2005

Reg. No. 15050943

N Bar Emulation EXT
Leachman Right Time
Leachman Erica 0025

California Traveler
Lassie 830 of Mc Cumber
Lassie 628 of Mc Cumber

Emulation N Bar 5522
N Bar Primrose 2424
Tehama Bando 155
Leachman Erica 8058
R R Traveler 5204
Tehama Eisa Erica Y699
G D A R Gold Nugget 766
Lassie 462 of Mc Cumber

Individual Record	
BW	106
WW	874
205	793
WR	118
ADG	4.10
YW	1415
365	1449
YR	116

Ultrasound Data	
MF	3.73/96
REA	13.10/105
Fat	0.34/121

EPDs							Dam's Production				
BW	WW	Milk	YW	SC	IMF	REA	Fat	%RP	BW	WW	YW
3.8	45	25	86		0.17	0.13	0.017		6/101	6/106	5/106

Lot 589 - Selling 2/3 interest and full possession. - This unique son of Leachman Right Time is an absolute power bull. He pushed the scale down at 874 lbs. at weaning with a 205 day weight of nearly 800 lbs. to ratio 118. He gained 4.10 lbs./day, and broke the 1400 lb. mark off test at 1415 lbs. to record a 365 day weight of 1449 lbs. to ratio 116. 589 is super long, deep bodied, and heavy muscled with a big explosive top and a wide, expressive hind end.

His pathfinder dam is a member of the herd bull producing Lassie cow family, and sired by California Traveler. Lassie 830 of Mc Cumber is deep bodied, easy fleshing, and has an excellent udder. To go along with this she is one of our top carcass cows with a +.38 IMF EPD which ranks her among the top 2% of current dams in the Angus breed. The entire line of cows she traces to have been excellent:

Lassie 830 - WWR 6/106, YWR 5/106, IMF 5/126, REA 5/101 (pathfinder)
Lassie 628 - WWR 6/104, YWR 5/106, IMF 4/107, REA 4/105 (pathfinder)
Lassie 462 - WWR 5/103, YWR 4/105, IMF 4/81, REA 4/111 (she is a full sister to the dam of Mc Cumber Tradition 383)
Lassie 648 - WWR 10/106, YWR 9/106, IMF 3/109, REA 3/90 (pathfinder)

This unique son of Leachman Right Time will definitely get your attention!!

 **591 MC Cumber 24J RT Time 591**

Calved: 02/5/2005

Reg. No. 15050944

Leachman Right Time
BT Right Time 24J
Sitz Everelda Entense 1905

N Bar Emulation EXT
Leachman Erica 0025
Traveler 124 G D A R
Sitz Everelda Entense 1791
Traveler 1148 G D A R
Miss Wix 5007 of Mc Cumber
Mc Cumber 6122 Equator 8113
B Pride 613 of Mc Cumber

Individual Record	
BW	85
WW	726
205	702
WR	104
ADG	3.44
YW	1180
365	1252
YR	100

Ultrasound Data	
MF	4.23/108
REA	12.10/97
Fat	0.26/93

EPDs							Dam's Production				
BW	WW	Milk	YW	SC	IMF	REA	Fat	%RP	BW	WW	YW
1.8	39	23	68		0.10	0.25	0.006		2/99	2/103	2/101

Lot 591 - Recommended for use on heifers - This calving ease son of BT Right Time 24J has excellent structure and is heavy muscled. He is a very complete bull. His dam has an excellent udder, has settled AI every year, and has done an admirable job. WWR 2/103, and YWR 2/101.

594 MC Cumber 3116 VRD 594

Calved: 02/6/2005

Reg. No. 15050947

Vermilion Dateline 7078
MC Cumber 7078 VRD 3116
Gale 836 of Mc Cumber

Connealy Dateline
Vermilion Blackbird 5044
Circle Oak Lucys Boy 625
Gale 6129 of Mc Cumber
Mc Cumber Foundation 701
Gale 607 of Mc Cumber
R R Scotchcap 9440
Rosetta 405 of Mc Cumber

Individual Record	
BW	87
WW	668
205	628
WWR	93
ADG	3.45
YW	1124
365	1180
YR	95

Ultrasound Data	
MF	4.32/111
REA	12.00/96
Fat	0.31/111

EPDs								Dam's Production		
BW	WW	Milk	YW	SC	IMF	REA	Fat %RP	BW	WW	YW
2.4	33	23	64		0.13	0.07	0.017	2/87	2/97	2/99

Lot 594 - Recommended for use on larger framed heifers - This moderate framed, expressively muscled son of Mc Cumber 7078 VRD 3116 scanned in the top end of the calf crop for IMF with a ratio of 111. His sire 3116 was the 2nd High selling bull in the 2004 sale to Sweiger Brothers in MO, where he is doing an excellent job with 33 calves turned into AHIR with a weaning ratio of 104, 5 calves turned in on yearling with a ratio of 101. He also had 5 calves scanned for IMF with a ratio of 106. His WW EPD of +56 ranks in the top 3% of the breed for current sires, a yearling EPD of +97 ranks in the top 5%, and his IMF EPD of +.21, and REA EPD of +.37 rank in the top 20% of the breed. We have another, excellent set of calves by him on the ground this spring.

598 MC Cumber Total Value 598

Calved: 02/7/2005

Reg. No. 15050951

Vermilion Dateline 7078
MC Cumber 7111 Total Value
Miss Wix 7111 of Mc Cumber

Connealy Dateline
Vermilion Blackbird 5044
G D A R Traveler 71
Miss Wix 365 of Mc Cumber
V D A R Rito 953
Gale 607 of Mc Cumber
Mc Cumber 054 Rito 326
Mc Cumber Blue Ribbon 606

Individual Record	
BW	103
WW	780
205	714
WWR	106
ADG	3.55
YW	1248
365	1282
YR	103

Ultrasound Data	
MF	4.24/109
REA	12.40/99
Fat	0.32/114

EPDs								Dam's Production		
BW	WW	Milk	YW	SC	IMF	REA	Fat %RP	BW	WW	YW
2.9	37	28	62		0.02	0.06	0.016	5/101	5/104	5/101

Lot 598 - This stout made, long bodied son of Mc Cumber 7111 Total Value weaned off at 780 lbs., with a 205 day weight of 714 to ratio 106. His super uddered, easy fleshing dam by Mc Cumber 953 Rito 420, descends from 4 consecutive generations of pathfinder cows. With his dam having WWR 5/104, and YWR 5/101. His Grand dam has been a herd bull producer with 2 sons selling into registered herd to Jim and Lori French in WY, and Dick, Grant, and Ross Nielsen in NE.

599 MC Cumber 7078 VRD 599

Calved: 02/7/2005

Reg. No. 15050952

Connealy Dateline
Vermilion Dateline 7078
Vermilion Blackbird 5044

D H D Traveler 6807
Eila Eila of Conanga
Leachman Right Time
Vermilion Blackbird 3525
V D A R Rito 953
Gale 607 of Mc Cumber
Mc Cumber 054 Rito 5009
Blackcap 339 of Mc Cumber

Individual Record	
BW	97
WW	806
205	737
WWR	110
ADG	3.29
YW	1240
365	1263
YR	102

Ultrasound Data	
MF	3.90/100
REA	11.20/90
Fat	0.27/96

EPDs								Dam's Production		
BW	WW	Milk	YW	SC	IMF	REA	Fat %RP	BW	WW	YW
3.2	49	20	81		-0.03	-0.02	-0.001	5/101	5/103	5/101

Lot 599 - A bigger framed son of VRD that pushed the scale down at 806 lbs. at weaning, with a 205 day weight of 737 lbs. to ratio 110. His dam descends from a line of cows that are **some of the most phenotypically pleasing cows we have had**. She has been a solid producer with a WWR 5/103, YWR 5/101, IMF 5/121, and REA 5/91. His dam has produced two graduate of bull sale selling for an average of \$2000 to David Hassenwinkle, and Marlin Reinhart.



5000 MC Cumber 8113 HC 5000

Calved: 02/01/2005

Reg. No.

Mc Cumber Equator 6122
MC Cumber 6122 Equator 8113
Rosetta 421 of Mc Cumber

Papa Equator 2928
Miss Wix 365 of Mc Cumber
Tehama Bando 155
Rosetta 297 of Mc Cumber
Traveler 1148 G D A R
G D A R Miss Blackcap 567
Shoshone 247 P J M
Miss Wix 294 of Mc Cumber

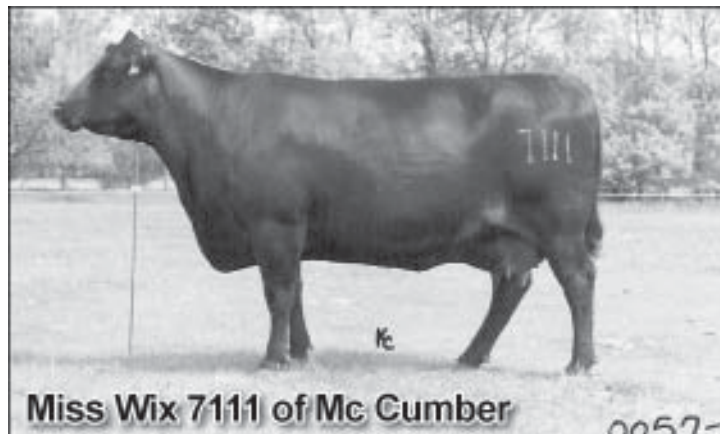
Individual Record	
BW	105
WW	950
205	855
WWR	100
ADG	2.73
YW	1310
365	1292
YR	100

EPDs								Dam's Production		
BW	WW	Milk	YW	SC	IMF	REA	Fat %RP	BW	WW	YW
1.8	35	32	64		0.04	0.36	0.014	3/97	3/107	3/106

Lot 5000 - Selling 2/3 interest and full possession - The final son of Mc Cumber 6122 Equator 8113, and produced by our donor Miss Wix 7111 of Mc Cumber. 5000 is a heavy muscled, long bodied, smooth made bull that moves well and tracks wide. He weaned off his recipient dam at an astonishing 950 lbs. in Montana. His 205 day weight of 855 lbs. is the top in this sale. He could likely work on heifers, which his EPDs would indicate, but had an actual birth weight of 105 lbs., which is mainly due to his recipient dam.

His dam is one of the best cows we have ever bred, and has ratio's of WWR 3/107, YWR 3/107, IMF 14/103, and REA 14/103. 7111 is the dam of Mc Cumber 7111 Total Value, who sold for \$13,500 to Marcy Cattle Co. in NE, and Redland Angus Ranch in WY, but an interest and possession has recently been sold to Dick, Grant, and Ross Nielson of NE. 5000's maternal sisters include Miss Wix 2022 of Mc Cumber, the dam of lot 531, and Miss Wix 2021 of Mc Cumber the \$15,000 sale topper which sold to Roger and Cory Fortune in SD.

He is an outcross to many of today's popular pedigrees!!!



Miss Wix 7111 of Mc Cumber

Dam of Lot 5000

5002

MC Cumber R Time 5002

Calved: 02/12/2005

Reg. No. 15050758

N Bar Emulation EXT
Leachman Right Time
Leachman Erica 0025

Emulation N Bar 5522
N Bar Primrose 2424
Tehama Bando 155
Leachman Erica 8058
Traveler 124 G D A R
Miss Wix 365 of Mc Cumber
A A R New Trend
Blackcap 013 of Mc Cumber

Individual Record	
BW	92
WW	818
205	757
WE	100
ADG	3.17
YW	1236
365	1264
YR	100

Mc Cumber 124 Traveler 212
Blackcap 631 of Mc Cumber
Blackcap 231 of Mc Cumber

EPDs				Dam's Production							
BW	WW	Milk	YW	SC	IMF	REA	Fat	%RP	BW	WW	YW
3.4	37	23	66		0.00	0.31	0.015		7/107	7/102	5/102

Ultrasound Data	
MF	3.74/98
REA	13.00/102
Fat	0.37/123



Mc Cumber Total Value 449

Maternal Brother to Lots 5006 & 5166

Lot 5002 - Selling 2/3 interest and full possession - This big, stout Leachman Right Time son really pushed the scale down at weaning. He weaned off his recipient dam at 817 lbs. 5002 is larger framed than the typical Right Time sons, but he is deep bodied, and heavy muscled.

His dam sold as a feature of our 2003 cow sale to Dr. Long of Brownwood Farms in MO. She has a WWR 7/103, YWR 7/101, IMF 13/92, and REA 13/107. Her REA EPD of +.46 ranks in the top 3% of the breed. Blackcap 631 of Mc Cumber is one of the most powerful daughter of Mc Cumber 124 Traveler 212 that we have bred. She is also the grand dam to lot 549, and 553 selling in this sale.



Mc Cumber 2700 RT Time 5166

Check out these
Flush Brothers
out of
Right Time

5006

MC Cumber Right Time 5006

Calved: 02/17/2005

Reg. No. 15050762

N Bar Emulation EXT
Leachman Right Time
Leachman Erica 0025

Emulation N Bar 5522
N Bar Primrose 2424
Tehama Bando 155
Leachman Erica 8058
Traveler 124 G D A R
Miss Wix 365 of Mc Cumber
Rito 054 G D A R
Miss Wix 235 of Mc Cumber

Individual Record	
BW	92
WW	646
205	607
WE	100
ADG	3.73
YW	1138
365	1204
YR	100

Mc Cumber 124 Traveler 212
Miss Wix 7007 of Mc Cumber
Miss Wix 030 of Mc Cumber

EPDs				Dam's Production							
BW	WW	Milk	YW	SC	IMF	REA	Fat	%RP	BW	WW	YW
3.3	36	23	67		0.01	0.18	0.029		6/96	6/104	5/102

Ultrasound Data	
MF	3.09/81
REA	12.80/100
Fat	0.29/97

5166

MC Cumber 2700 RT Time 5166

Calved: 02/27/2005

Reg. No. 15050850

N Bar Emulation EXT
Leachman Right Time
Leachman Erica 0025

Emulation N Bar 5522
N Bar Primrose 2424
Tehama Bando 155
Leachman Erica 8058
Traveler 124 G D A R
Miss Wix 365 of Mc Cumber
Rito 054 G D A R
Miss Wix 235 of Mc Cumber

Individual Record	
BW	78
WW	690
205	666
WE	99
ADG	3.11
YW	1100
365	1164
YR	93

Mc Cumber 124 Traveler 212
Miss Wix 7007 of Mc Cumber
Miss Wix 030 of Mc Cumber

EPDs				Dam's Production							
BW	WW	Milk	YW	SC	IMF	REA	Fat	%RP	BW	WW	YW
1.3	34	23	61		0.07	0.11	0.034		6/96	6/104	5/102

Ultrasound Data	
MF	3.84/98
REA	11.90/95
Fat	0.34/121

Lot 5006 and 5166 - Selling 2/3 interest and full possession - Recommended for use on heifers - These full brothers by Right Time, are moderate framed, heavy muscled, super sound herd bull prospects. They are maternal brothers to Mc Cumber Total Value 449. 449 was the 2nd High selling bull in last year's sale to Diamond W Angus Ranch in TX for \$10,000. His first calves have been impressive, and he is proving to be a sure - fire heifer bull. The calves come easy, and have excellent vigor out of first calf heifers, as well as cows. The full sisters to 5006 and 5166 are equally impressive. They are moderate, thick made females, with that the brood cow look.

The dam to 5006 and 5166 is Miss Wix 7007 of Mc Cumber. She is one of the best cows on the ranch. **She consistently produces the type of cattle**

that will work under any environment. Her pedigree is stacked with some of the most outstanding cows we have bred, including Miss Wix 365 of Mc Cumber, and Miss Wix 235 of Mc Cumber. This line of cows has been extremely productive:

Miss Wix 7007 - BWR 6/96, WWR 6/104, YWR 5/102, IMF 6/98, REA 6/103
Miss Wix 030 - BWR 3/102, WWR 3/111, YWR 2/109,
Miss Wix 235 - BWR 10/108, WWR 10/104, YWR 9/104
Miss Wix 117 - BWR 10/102, WWR 10/119, YWR 9/111 (pathfinder)
5006 and 5166 are also stacked with some of the best cow - maker sires this breed has ever had, with the bulls, Leachman Right Time, Mc Cumber 124 Traveler 212, Rito 054 GDAR, Shoshone Viking GD60, and Candolier Forever 376.

**Take your pick
from this super
EXT X Miss Wix flush!**

5140 - 5145 - 5007 - 5008 - 5010 - Selling 2/3 interest and full possession - These flush brothers offer some outcross genetics to our customers. Their dam is Miss Wix 702 of Mc Cumber, the very productive full sister to Mc Cumber Foundation 701. She is a feminine, deep bodied, well - made female with perfect feet and a flawless udder. Her production has been excellent with a WWR 5/107, YWR 2/109, IMF 26/102, and REA 26/99. Her previous progeny have included past sale graduates that have sold to L.M. and Bailey Patterson TX, Rob Brooks, ND, Arlen Vollmer, ND, Lynn Haugen, ND, Dan Humble, ND, Virgil Hall, ND, Jerry Bright, KY, and Dave Wagner ND. Daughters of Miss Wix 702 of Mc Cumber are also working for Ed and Lori Williams, MS, and one other daughter was the top selling female in the North Star Classic this winter in Valley City for Arnold Donarski.



5007

MC Cumber Ext 5007

Calved: 02/18/2005

Reg. No. 15055421

Emulation N Bar 5522
N Bar Emulation EXT
N Bar Primrose 2424

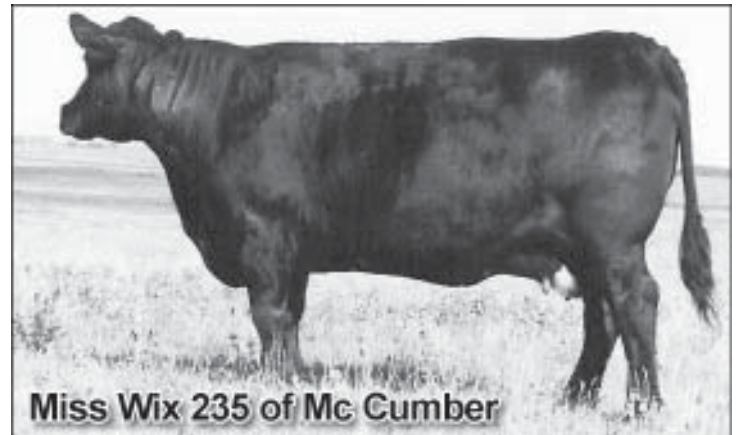
Mc Cumber 124 Traveler 212
Miss Wix 702 of Mc Cumber
Miss Wix 235 of Mc Cumber

Emulation 31
Ankony 8F78 Lass 8F275
Emulation 31
Primrose N Bar 9962
Traveler 124 G D A R
Miss Wix 365 of Mc Cumber
Shoshone Viking GD60
Miss Wix 117 of Mc Cumber

Individual Record			
BW	94		
WW	670		
205	631		
WR	100		
ADG	4.03		
YW	1202		
365	1276		
WR	100		
Ultrasound Data			
MF	3.67/97		
REA	13.60/106		
Fat	0.28/93		

EPDs								Dam's Production			
BW	WW	Milk	YW	SC	IMF	REA	Fat	%RP	BW	WW	YW
2.9	33	23	64		0.12	0.13	0.025		5/103	5/107	2/109

Lot 5007 - My pick of the flush. 5007 is not only moderate framed and attractive, but he is **stout, deep bodied, big topped, and has a very large, expressive hind quarter**. He should produce phenomenal females that are easy fleshing, deep bodied, and perfect uddered. To go along with this the male counterparts with be fast growing, and heavy muscled.



Maternal Grand dam of this EXT X Miss Wix flush

Lot	Name	BD	Reg. No.	BW	WW	205	WR	ADG	YW	365	IMF	REA	Fat:	IMF	REA	Fat
5008	McCumber EXT 5008	02/18/2005	15055422	93	724	681	ET	3.65	1206	1265	3.91/103	12.60/98	0.50/167	0.14	0.02	0.050
Lot 5008 - Another excellent flush brother, possessing the same cow making ability, and rapid early growth of his brothers.																
5010	McCumber EXT 5010	02/21/2005	15055423	98	712	676	100	3.56	1182	1246	3.97/104	13.60/106	0.49/163	0.15	0.13	0.049
Lot 5010 - This excellent scanning flush brother with an IMF ratio of 104, and a REA ratio of 106, possesses added muscle, and is very sound on his feet and legs.																
5140	McCumber EXT 5140	02/15/2005	15055424	95	780	728	100	3.03	1180	1213	3.86/102	11.60/91	0.24/80	0.14	-0.09	0.021
Lot 5140 - This long bodied, smooth made bull should be an absolute udder fixer.																
5145	McCumber EXT 5145	02/16/2005	15055425	110	818	766	100	4.14	1365	1428	4.24/112	14.90/116	0.33/110	0.18	0.27	0.031
Lot 5145 - This performance powerhouse, is a very unique son of N Bar Emulation EXT. He came off his recipient dam at 818 lbs., gained 4.14 lbs./day, and weighed off test at 1365 lbs., with a 365 day weight of 1428 lbs. To go along with his performance, he had an IMF score of 4.23 to ratio 112 and an ADJ. REA of 14.9 to ratio 116. 5145 is a larger framed EXT, that is smooth made, deep bodied, and heavy muscled.																

5013 MC Cumber Right Time 5013

Calved: 02/21/2005

Reg. No. 15198907

N Bar Emulation EXT
Leachman Right Time
Leachman Erica 0025

Emulation N Bar 5522
N Bar Primrose 2424
Tehama Bando 155
Leachman Erica 8058
Traveler 124 G D A R
Miss Wix 365 of Mc Cumber
Mc Cumber Rito 0054
Gale 045 of Mc Cumber

Individual Record	
BW	99
WW	728
305	691
WR	100
ADG	3.44
YW	1182
365	1241
YR	ET

Ultrasound Data	
MF	3.72/98
REA	13.30/104
Fat	0.23/77

EPDs								Dam's Production		
BW	WW	Milk	YW	SC	IMF	REA	Fat %RP	BW	WW	YW
4.0	38	21	71		0.07	0.40	0.011	4/107	4/104	3/101

Lot 5013 - This son of Leachman Right Time descends from a powerful member of the Gale cow family. He is deep bodied, thick topped, and excellent on his feet and legs. His dam is a powerful daughter of Mc Cumber 124 Traveler 212. She is deep ribbed, wide made, and easy fleshing. Her REA EPD of +.62 ranks in the top 1% of current dams of the Angus breed, and her production has been top of the line.

Gale 948 - WWR 4/104, YWR 3/101, IMF 4/111, REA 4/108
Gale 5101 - WWR 4/104, YWR 4/100, IMF 3/96, REA 3/108
Gale 045 - WWR 7/109, YWR 7/109, IMF 23/108, REA 23/106 (pathfinder)

5019 MC Cumber 004 Traveler 5019

Calved: 03/10/2005

Reg. No. 15050771

Sitz Traveler 8180
S A V 8180 Traveler 004
Boyd Forever Lady 8003

G D A R Traveler 71
Sitz Everelda Entense 1137
A A R New Trend
S V F Forever Lady 57D
Traveler 124 G D A R
Miss Wix 365 of Mc Cumber
Shoshone Viking GD60
Miss Wix 117 of Mc Cumber

Individual Record	
BW	95
WW	606
305	607
WR	100
ADG	3.24
YW	1034
365	1125
YR	ET

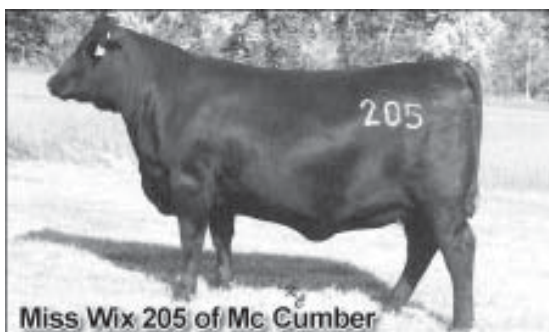
Ultrasound Data	
MF	3.61/95
REA	11.50/90
Fat	0.23/77

EPDs								Dam's Production		
BW	WW	Milk	YW	SC	IMF	REA	Fat %RP	BW	WW	YW
3.5	42	27	79		0.00	-0.03	0.007	5/103	5/107	2/109

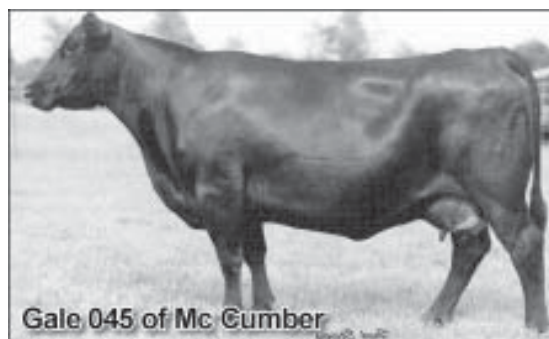
Lot 5019 - 5020 - These flush brothers by Traveler 004 and Miss Wix 702 of Mc Cumber are stylish bulls, with thickness and depth. They would make an excellent pair of bulls to add consistency, and performance to a calf crop. Their dam has produced numerous excellent offspring, and many are included in this sale.



Above: Full brother to Dam of Lot 5021



At Right: Full sister to Dam of Lot 5021



Maternal Great Grand dam to Lot 5013



Sire to Lots 5019 & 5020

5020 MC Cumber 004 Traveler 5020

Calved: 03/10/2005

Reg. No. 15050772

Sitz Traveler 8180
S A V 8180 Traveler 004
Boyd Forever Lady 8003

G D A R Traveler 71
Sitz Everelda Entense 1137
A A R New Trend
S V F Forever Lady 57D
Traveler 124 G D A R
Miss Wix 365 of Mc Cumber
Shoshone Viking GD60
Miss Wix 117 of Mc Cumber

Individual Record	
BW	92
WW	622
305	623
WR	100
ADG	3.24
YW	1050
365	1141
YR	ET

Mc Cumber 124 Traveler 212
Miss Wix 702 of Mc Cumber
Miss Wix 235 of Mc Cumber

EPDs								Dam's Production		
BW	WW	Milk	YW	SC	IMF	REA	Fat %RP	BW	WW	YW
3.5	42	27	79		-0.03	0.09	0.031	5/103	5/107	5/109

Ultrasound Data	
MF	3.36/88
REA	12.60/98
Fat	0.44/147

5021 MC Cumber 7078 VRD 5021

Calved: 03/14/2005

Reg. No. 15050773

Connealy Dateline
Vermilion Dateline 7078
Vermilion Blackbird 5044

D H D Traveler 6807
Eila Eila of Conanga
Leachman Right Time
Vermilion Blackbird 3525
Band 234 of Ideal 3163
Tehama Blackcap G373
Shoshone 247 P J M
Miss Wix 294 of Mc Cumber

Individual Record	
BW	99
WW	690
305	700
WR	100
ADG	3.30
YW	1126
365	1228
YR	ET

Tehama Bando 155
Miss Wix 9007 of Mc Cumber
Miss Wix 365 of Mc Cumber

EPDs								Dam's Production		
BW	WW	Milk	YW	SC	IMF	REA	Fat %RP	BW	WW	YW
4.0	46	24	84		0.02	0.13	-0.012	3/98	3/104	2/101

Ultrasound Data	
MF	3.97/104
REA	11.90/93
Fat	0.23/77

Lot 5021 - This son of VRD is long and deep. The dam of 5021, sold to Oak Hill Farms in VA, and is being flushed in partnership with us. His dam is a full sister to Mc Cumber Classic 202, and the 2nd high selling bred heifer in our 2003 cow sale. Her maternal siblings included many of the females that have made the Miss Wix cow family known throughout the entire Angus breed.



5030

MC Cumber RT Time 5030

Calved: 03/1/2005

Reg. No. 15054546

N Bar Emulation EXT
Leachman Right Time
Leachman Erica 0025

Tehama Bando 155
Rosetta 5002 of Mc Cumber
Rosetta 214 of Mc Cumber

Emulation N Bar 5522
N Bar Primrose 2424
Tehama Bando 155
Leachman Erica 8058
Band 234 of Ideal 3163
Tehama Blackcap G373
K M A Highroller 5025
Rosetta 048 of Mc Cumber

Individual Record	
BW	78
WW	552
205	537
WR	100
ADG	2.94
YW	940
365	1007
RE	ET
Ultrasound Data	
IMF	3.51/92
REA	12.10/95
Fat	0.22/73

EPDs							
BW	WW	Milk	YW	SC	IMF	REA	Fat %RP
2.1	37	18	70		0.00	0.09	0.006

Dam's Production		
BW	WW	YW
9/98	9/98	7/102



Rosetta 5002 of Mc Cumber, Donor Dam for Lots 5030, 5031, 5032, 5035, 5040, 5041

Lot 5030 - 5031 - 5032 - 5040 - 5041 - Recommended for use on heifers
- This flush of Right Time sons should make tremendous **calving ease bulls**. They are moderate framed, deep bodied, thick made bulls **designed to work under harsh environments**. Their dam is tremendously easy fleshing, with depth of rib, natural thickness, a big, sound foot and a perfect udder. She has produced several graduates of our bull sales, with sons selling to Risse Brothers, SD, Ron Slaubaugh, ND, Rick Slaubaugh, ND, and Craig Strong, ND.

Lot	Name	BD	Reg. No.	BW	WW	205	WR	ADG	YW	365	IMF	REA	Fat:	IMF	REA	Fat
5031	McCumber RT Time 5031	03/5/2005	15054547	90	696	685	100	3.03	1096	1170	3.82/101	13.40/105	0.29/97	0.04	0.23	0.013
5032	McCumber RT Time 5032	03/5/2005	15054548	88	704	693	100	2.36	1016	1071	3.48/92	12.50/98	0.16/53	0.00	0.13	-0.001
5035	McCumber RT Time 5035	03/18/2005	15170613	98	664	656	100	3.39	1112	1198	4.13/109	12.80/100	0.32/107	0.12	-0.01	0.025
5040	McCumber RT Time 5040	03/15/2005	15054551	67	596	607	100	3.06	1000	1097	109/12.80	100/0.35	117/	0.07	0.16	0.020
5041	McCumber RT Time 5041	03/19/2005	15170614	57	532	551	100	2.95	922	1023	3.63/96	11.70/91	0.02/0.04	0.02	0.04	0.013

5033 MC Cumber 7078 VRD 5033

Calved: 03/6/2005

Reg. No. 15054549

Connealy Dateline
 Vermilion Dateline 7078
 Vermilion Blackbird 5044

054 P J M 1438
 Gale 5127 of Mc Cumber
 Gale 607 of Mc Cumber

D H D Traveler 6807
 Eila Eila of Conanga
 Leachman Right Time
 Vermilion Blackbird 3525
 Rito 054 G D A R
 P J M Montana Power 196
 Traveler 1148 G D A R
 Gale 413 of Mc Cumber

Individual Record	
BW	98
WW	668
305	660
WR	100
ADG	3.56
YW	1138
365	1230
YR	ET

Ultrasound Data	
MF	4.01/106
REA	12.70/99
Fat	0.20/67

EPDs							Dam's Production				
BW	WW	Milk	YW	SC	IMF	REA	Fat	%RP	BW	WW	YW
2.9	41	23	77		0.02	0.25	-0.004		8/97	8/102	8/103

Lots 5033 & 5043 - These flush brothers by VRD are peas in a pod. They are long, smooth, and heavy muscled. Their ultrasound was excellent with IMF ratios of 106, and 117, and REA ratios of 99, and 105 respectively. Their dam is Gale 5127 of Mc Cumber, who sold through our 2003 cow sale to Pete and Vawnita Best, and produced our High selling bull in last year's bull sale to



Gale 5127 of Mc Cumber, Donor Dam for Lots 5033 & 5043

5036 MC Cumber RT Time 5036

Calved: 03/18/2005

Reg. No. 15170613

N Bar Emulation EXT
 Leachman Right Time
 Leachman Erica 0025

Mc Cumber 124 Traveler 212
 Miss Wix 702 of Mc Cumber
 Miss Wix 235 of Mc Cumber

Emulation N Bar 5522
 N Bar Primrose 2424
 Tehama Bando 155
 Leachman Erica 8058
 Traveler 124 G D A R
 Miss Wix 365 of Mc Cumber
 Shoshone Viking GD60
 Miss Wix 117 of Mc Cumber

Individual Record	
BW	105
WW	648
305	667
WR	100
ADG	3.50
YW	1110
365	1227
YR	ET

Ultrasound Data	
MF	4.13/109
REA	12.80/100
Fat	0.32/107

EPDs							Dam's Production				
BW	WW	Milk	YW	SC	IMF	REA	Fat	%RP	BW	WW	YW
3.1	34	23	64		0.12	-0.01	0.025		5/103	5/107	2/109

Lot 5036 - Selling 2/3 interest and full possession - This outstanding son of Right Time is a maternal brother to the EXT bulls, 004 bulls, and the 24J son of Miss Wix 702 of Mc Cumber. 5036 is moderate framed, has depth, and spring of rib, and is very heavy muscled. His dam is an outstanding producer and the maternal sister to Mc Cumber Foundation 701, and Miss Wix 705 of Mc Cumber. 5036 has generations of cows with outstanding udders, and 5036 should be an **udder fixer**. This could be one of the sleeper bulls in the sale.

5043 MC Cumber 7078 VRD 5043

Calved: 03/19/2005

Reg. No. 15170616

Connealy Dateline
 Vermilion Dateline 7078
 Vermilion Blackbird 5044

054 P J M 1438
 Gale 5127 of Mc Cumber
 Gale 607 of Mc Cumber

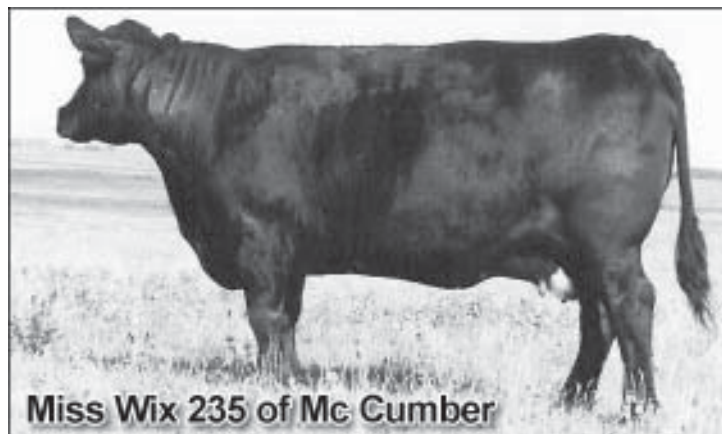
D H D Traveler 6807
 Eila Eila of Conanga
 Leachman Right Time
 Vermilion Blackbird 3525
 Rito 054 G D A R
 P J M Montana Power 196
 Traveler 1148 G D A R
 Gale 413 of Mc Cumber

Individual Record	
BW	90
WW	622
305	643
WR	100
ADG	3.64
YW	1102
365	1225
YR	ET

Ultrasound Data	
MF	4.43/117
REA	13.50/105
Fat	0.29/97

EPDs							Dam's Production				
BW	WW	Milk	YW	SC	IMF	REA	Fat	%RP	BW	WW	YW
2.9	41	23	77		0.11	0.10	-0.05	0.009	8/97	8/102	8/103

Hills View Ranch in SD. She stems from 5 consecutive pathfinder dams that pass on **fertility, stayability, and productivity** to their offspring.
 Gale 5127 - BWR 8/97, WWR 8/102, YWR 8/03, IMF 9/110, REA 9/103
 Gale 607 - BWR 9/94, WWR 9/103, YWR 9/100, IMF 6/100, REA 6/101
 Gale 413 - BWR 10/105, WWR 10/104, YWR 10/103



• Above: Maternal Grand dam to Lot 5036

• At Right: Full brother to Dam of Lot 5036



5100 MC Cumber 3116 VRD 5100

Calved: 02/7/2005

Reg. No. 15050783

Vermilion Dateline 7078
 MC Cumber 7078 VRD 3116
 Gale 836 of Mc Cumber

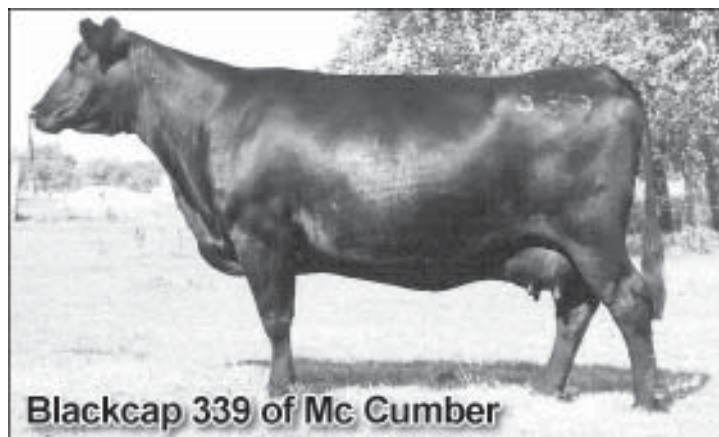
 Mc Cumber 054 Rito 5009
 Blackcap 738 of Mc Cumber
 Blackcap 339 of Mc Cumber

Connealy Dateline
 Vermilion Blackbird 5044
 Circle Oak Lucys Boy 625
 Gale 6129 of Mc Cumber
 Rito 054 G D A R
 Miss Wix 365 of Mc Cumber
 K M A Highroller 5025
 Blackcap 398 of Mc Cumber

Individual Record	
BW	87
WW	710
305	649
WR	96
ADG	3.2
YW	1134
365	1163
WR	93
Ultrasound Data	
MF	3.94/101
REA	11.60/93
Fat	0.31/111

EPDs							Dam's Production				
BW	WW	Milk	YW	SC	IMF	REA	Fat	%RP	BW	WW	YW
2.3	42	19	68		-.03	.31	.00		7/98	7/97	6/99

Lot 5100 - Recommended for use on heifers - This long bodied, smooth made son of Mc Cumber 7078 VRD 3116, is out of one of the most beautiful cows on the ranch. She is feminine, long bodied, and has an absolutely flawless udder.



Blackcap 339 of Mc Cumber

Maternal Grand dam of Lot 5100



Mc Cumber 8005 New Day 5108

5108 MC Cumber 8005 New Day 5108

Calved: 02/8/2005

Reg. No. 15050791

A A R New Trend
 Boyd New Day 8005
 S V F Forever Lady 57D

 Mr Wix of Mc Cumber 204
 Gale 198 of Mc Cumber
 Gale 6129 of Mc Cumber

V D A R Shoshone 548
 Donna A A R 74
 Leachman Right Time
 S V F Forever Lady 1128
 Tehama Bando 155
 Miss Wix 204 of Mc Cumber
 Mc Cumber 054 Rito 326
 Gale 413 of Mc Cumber

Individual Record	
BW	98
WW	714
305	673
WR	100
ADG	3.68
YW	1200
365	1262
WR	101
Ultrasound Data	
MF	4.67/120
REA	12.60/101
Fat	0.18/64

EPDs							Dam's Production				
BW	WW	Milk	YW	SC	IMF	REA	Fat	%RP	BW	WW	YW
3.3	39	25	79		0.10	0.21	-0.010		2/107	2/104	2/108

Lot 5108 - Selling 2/3 interest and full possessor. - One of the top Boyd New Day sons in the sale. 5108 is moderate, thick made, and long bodied. He puts some of the best numbers together in the sale with an outstanding IMF ratio of 120. His dam is a member of the Gale cow family. Gale 198 has been an excellent producer with WWR 2/104, YWR 2/108, IMF 2/113, and REA 2/100. **This top - notch New Day is very complete.**

5109 MC Cumber Total Value 5109

Calved: 02/9/2005

Reg. No. 15050792

Vermilion Dateline 7078
 MC Cumber 7111 Total Value
 Miss Wix 7111 of Mc Cumber

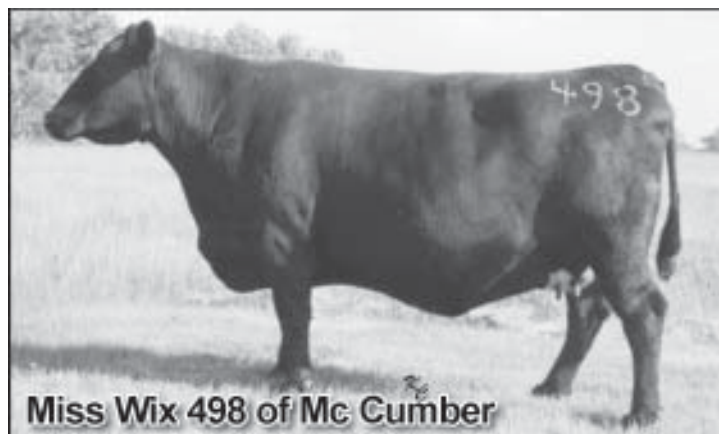
 Mc Cumber 054 Rito 5009
 Miss Wix 928 of Mc Cumber
 Miss Wix 498 of Mc Cumber

Connealy Dateline
 Vermilion Blackbird 5044
 G D A R Traveler 71
 Miss Wix 365 of Mc Cumber
 Rito 054 G D A R
 Miss Wix 365 of Mc Cumber
 Mc Cumber 124 Traveler 212
 Miss Wix 063 of Mc Cumber

Individual Record	
BW	75
WW	704
305	646
WR	96
ADG	3.05
YW	1106
365	1134
WR	91
Ultrasound Data	
MF	4.10/105
REA	12.10/97
Fat	0.52/186

EPDs							Dam's Production				
BW	WW	Milk	YW	SC	IMF	REA	Fat	%RP	BW	WW	YW
0.8	38	18	58		0.13	-0.07	0.044		4/85	4/87	3/88

Lot 5109 - Recommended for use on heifers - This calving ease son of Mc Cumber Total Value had a BW of 75 lbs. and still weaned off at over 700 lbs. 5109 is moderate framed, deep ribbed, sound structurally, and excellent on his feet and legs. He is carrying a little extra white, and just want you to be aware of that. His dam is an easy fleshing daughter of Mc Cumber 054 Rito 5009, and comes from the Miss Wix cow family. Miss Wix 928 is also very good uddered, and is nursing a tremendous heifer calf already this spring.



Miss Wix 498 of Mc Cumber

Maternal Grand dam of Lot 5109

5114 MC Cumber Total Value 5114

Calved: 02/9/2005 Reg. No. 15050797

Vermilion Dateline 7078
 MC Cumber 7111 Total Value
 Miss Wix 7111 of Mc Cumber

AAR New Trend
 Rosetta 1017 of Mc Cumber
 Rosetta 128 of Mc Cumber

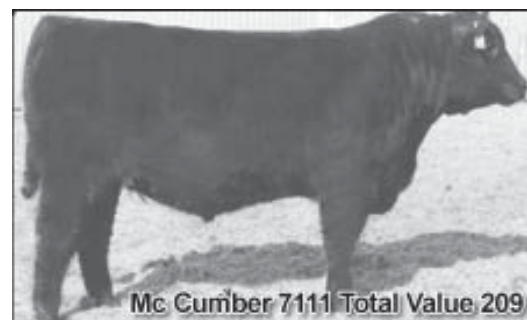
Connealy Dateline
 Vermilion Blackbird 5044
 G D A R Traveler 71
 Miss Wix 365 of Mc Cumber
 V D A R Shoshone 548
 Donna AAR 74
 Rito 054 G D A R
 Rosetta 287 of Mc Cumber

Individual Record	
BW	98
WW	754
205	711
WR	106
ADG	3.45
YW	1210
365	1263
WR	102

Ultrasound Data	
MF	4.22/108
REA	11.80/94
Fat	0.27/96

EPDs				Dam's Production							
BW	WW	Milk	YW	SC	IMF	REA	Fat	%RP	BW	WW	YW
4.4	38	26	63		0.01	0.14	0.004		3/102	3/103	3/98

Lot 5114 - A super son of Mc Cumber 7111 Total Value, that has excellent ratios across the board. He is an eye catcher that moves extremely well, has depth, thickness, and puts a foot down in all four corners. His dam is a moderate framed, super uddered daughter of AAR New Trend. Her dam Rosetta 128 of Mc Cumber is working in the Wilde Angus Ranch herd in MN, and her grand dam produced 14 calves naturally for us while maintaining a nursing ratio of 14/105. Her only son sold through last year's sale to



• Above: Sire to Lot 5118

• At Left: Great Grand dam of Lot 5118



Robert Stices of Tower

5117 MC Cumber 8005 New Day 5117

Calved: 02/10/2005 Reg. No. 15050800

AAR New Trend
 Boyd New Day 8005
 S V F Forever Lady 57D

Mc Cumber Mr Wix 7104
 Enchantress 286 of Mc Cumber
 Enchantress 086 of Mc Cumber

V D A R Shoshone 548
 Donna AAR 74
 Leachman Right Time
 S V F Forever Lady 1128
 Mr Wix of Mc Cumber 204
 B Pride 488 of Mc Cumber
 Sitz S L S Rainmaker 7596
 Enchantress 816 Mc Cumber

Individual Record	
BW	92
WW	710
205	696
WR	103
ADG	3.88
YW	1222
365	1317
WR	105

Ultrasound Data	
MF	4.20/108
REA	12.70/102
Fat	0.33/118

EPDs				Dam's Production							
BW	WW	Milk	YW	SC	IMF	REA	Fat	%RP	BW	WW	YW
3.2	42	25	87		0.19	0.32	0.014		2/102	2/99	2/103

Lot 5117 - Selling 2/3 interest and full possession - You will really like this top of the line New Day son. He puts a lot of things together. He just falls out side our parameters for a heifer bull, but weaned off with a 205 day weight of nearly 700 lbs. to ratio 103 gained 3.88 lbs./day and recorded a 365 day weight of 1317 lbs. to ratio 105. He puts together excellent ultrasound with an IMF ratio of 108, and REA ratio of 102. His EPDs are very balanced, including his IMF of +.19, and REA +.32.

His dam is an easy fleshing, moderate framed cow that has an excellent udder. She is a daughter of Mc Cumber Mr. Wix 7104, who is doing an excellent job for the Nielson's in NE, and her dam produced a \$5000 bull in last years sale.

5117 is a super complete bull that has balanced numbers and definitely looks the part.

5118 MC Cumber Total Value 5118

Calved: 02/10/2005 Reg. No. 15050801

Vermilion Dateline 7078
 MC Cumber 7111 Total Value
 Miss Wix 7111 of Mc Cumber

Mc Cumber 054 Rito 326
 B Pride 2010 of Mc Cumber
 B Pride 5122 of Mc Cumber

Connealy Dateline
 Vermilion Blackbird 5044
 G D A R Traveler 71
 Miss Wix 365 of Mc Cumber
 Rito 054 G D A R
 Miss Wix 365 of Mc Cumber
 Mc Cumber 124 Traveler 212
 B Pride 274 of Mc Cumber

Individual Record	
BW	91
WW	790
205	769
WR	114
ADG	3.27
YW	1222
365	1292
WR	104

EPDs				Dam's Production							
BW	WW	Milk	YW	SC	IMF	REA	Fat	%RP	BW	WW	YW
3.5	42	29	65		0.14	0.09	0.008		2/97	2/109	2/104

Lot 5118 - Selling 2/3 interest and full possession - This herd bull prospect by Total Value is deep, thick, and moderate framed. He weaned off his productive dam with a 205 day weight of 769 lbs. to ratio 114, and takes his place as one of the top weaning weight bulls of the calf crop.

His dam, B Pride 2010 of Mc Cumber stems from one of the best Mc Cumber 124 Traveler 212 daughters we've had on the place. 2010 is a moderate framed, good uddered daughter of Mc Cumber 054 Rito 326, which puts together 2 of the best cow making sons of Miss Wix 365 of Mc Cumber. 2010 and the cows behind her have been very productive.

B Pride 2010 - WWR 2/109, YWR 2/104

B Pride 5122 - WWR 5/111, YWR 4/107

B Pride 274 - WWR 5/106, YWR 4/104

This herd bull prospect traces to Miss Wix 365 of Mc Cumber 3 times, and stems from an excellent maternal heritage.





Mc Cumber 8005 New Day 5120

5120 MC Cumber 8005 New Day 5120

Calved: 02/11/2005

Reg. No. 15050804

AAR New Trend
Boyd New Day 8005
S V F Forever Lady 57D

McCumber Powertrain HC 1025
Miss Wix 1101 of Mc Cumber
Miss Wix 6101 of Mc Cumber

V D A R Shoshone 548
Donna AAR 74
Leachman Right Time
S V F Forever Lady 1128
Papa Equator 2928
Rosetta 048 of Mc Cumber
Mc Cumber 124 Traveler 212
Miss Wix 0105 of Mc Cumber

Individual Record	
BW	97
WW	738
206	700
WR	104
ADG	3.95
YW	1260
365	1332
SR	107

EPDs								Dam's Production			Ultrasound Data		
BW	WW	Milk	YW	SC	IMF	REA	Fat	%RP	BW	WW	YW	MF	Fat
3.8	48	28	96		0.08	0.63	0.020		3/109	3/110	3/110	3.82/98	13.90/111
													0.27/96

Lot 5120 - Selling 2/3 interest and full possession - This top performing son of Boyd New Day is stout made, deep bodied, and heavy muscled. He has some of the top performance EPDs in the sale with a YW EPD of 96 which ranks in the top 3% , and a REA EPD of +.63 which ranks in the top 4% of the breed for non - parent Angus bulls.

His dam is a powerful cow. She has depth and spring of rib, muscle, an excellent udder and a big, well shaped hoof. She is **staking her claim as one of the top producing cows in the herd.**

The cows behind her have also been extremely productive with **4 consecutive generations of pathfinders** including her dam, who sold as a feature of our 2003 cow sale to Majic Valley Angus Ranch in WA. Their productivity, fertility, and stayability is some of the best we have had:

Miss Wix 1101 - WWR 3/110, YWR 3/110, IMF 3/115, REA 3/101
Miss Wix 6101 - WWR 8/112, YWR 6/111, IMF 6/107, REA 6/105
Miss Wix 0105 - WWR 8/108, YWR 7/109,
Miss Wix 128 - WWR 12/109, YWR 11/107
Miss Wix 187 - WWR 14/102, YWR 14/103
A definite herd bull prospect worth checking out !!!



Mc Cumber Classic 202

Sire of Lot 5121

5121 MC Cumber 202 Classic 5121

Calved: 02/11/2005

Reg. No. 15050805

Tehama Bando 155
MC Cumber Classic 202
Miss Wix 365 of Mc Cumber

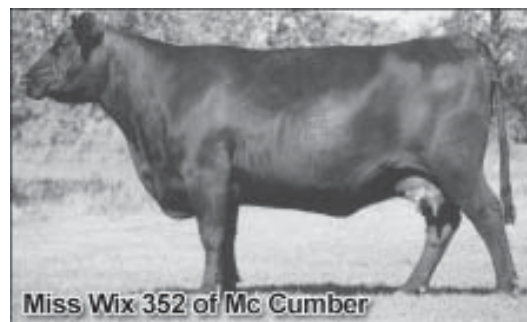
Q A S Traveler 23-4
Miss Wix 1001 of Mc Cumber
Miss Wix 352 of Mc Cumber

Band 234 of Ideal 3163
Tehama Blackcap G373
Shoshone 247 P J M
Miss Wix 294 of Mc Cumber
Band 234 of Ideal 3163
Q A S Blackbird Eve 601 1
K M A Highroller 5025
Miss Wix 098 of Mc Cumber

Individual Record	
BW	85
WW	706
206	670
WR	100
ADG	3.32
YW	1144
365	1201
SR	97

EPDs								Dam's Production			Ultrasound Data		
BW	WW	Milk	YW	SC	IMF	REA	Fat	%RP	BW	WW	YW	MF	Fat
0.9	28	24	43		0.10	0.09	-0.027		3/96	3/101	3/96	4.32/111	12.50/100
													0.20/71

Lot 5121 - Recommended for use on heifers - This thick topped, big - butted son of Mc Cumber Classic 202, is very eye - catching. He is laid in nice and smooth through his shoulder, and has a big wide square rump. His dam is the result of **5 consecutive generations of pathfinder cows**, and is a moderate framed, super uddered, easy fleshing direct daughter of QAS Traveler 23 - 4.



Miss Wix 352 of Mc Cumber

Maternal Grand dam of Lot 5121

5125 MC Cumber Total Value 5125

Calved: 02/11/2005

Reg. No. 15050809

Vermilion Dateline 7078
MC Cumber 7111 Total Value
Miss Wix 7111 of Mc Cumber

Connealy Dateline
Vermilion Blackbird 5044
G D A R Traveler 71
Miss Wix 365 of Mc Cumber
R R Ferdinand 758D
Miss Wix 554 of Mc Cumber
K M A Highroller 5025
Blackcap 398 of Mc Cumber

Individual Record	
BW	108
WW	900
205	831
WR	123
ADG	3.64
YW	1380
365	1413
YR	113

Mc Cumber Ferdinand 896
Blackcap 037 of Mc Cumber
Blackcap 339 of Mc Cumber

EPDs		Dam's Production									
BW	WW	Milk	YW	SC	IMF	REA	Fat	%RP	BW	WW	YW
5.0	54	25	81	0.05	0.08	-0.005			4/109	4/110	4/104

Ultrasound Data	
MF	3.83/98
REA	12.90/103
Fat	0.20/71

Lot 5125 - This big, stout, rugged made bull hit the 900 lb. mark at weaning. He recorded a 205 day weight of 831 lbs. to ratio 123, and weighed off test at 1380lbs. to post a 365 day weight of 1413 lbs. to ratio 113. This top performing bull is produced by one of the bigger cows we own, however she is very deep bodied, wide made and has an absolutely perfect udder. She maintained her pathfinder status and records a WWR of 4/110, and YWR 4/104. **Put him with your cows, and raise big, stout market topping steers!!!**



Blackcap 339 of Mc Cumber
Maternal Grand dam of Lot 5125



Mc Cumber 24J RT Time 5126

5126 MC Cumber 24J RT Time 5126

Calved: 02/11/2005

Reg. No. 15050810

Leachman Right Time
BT Right Time 24J
Sitz Everelda Entense 1905

N Bar Emulation EXT
Leachman Erica 0025
Traveler 124 G D A R
Sitz Everelda Entense 1791
Mc Cumber Equator 6122
Rosetta 421 of Mc Cumber
Mc Cumber 054 Rito 326
G D A R Lady Barbola 4186

Individual Record	
BW	98
WW	752
205	695
WR	103
ADG	3.41
YW	1202
365	1241
YR	99

Mc Cumber 6122 Equator 8113
Lady Barbola 0149 Mc Cumber
Lady Barbola 7146 Mc Cumber

EPDs		Dam's Production									
BW	WW	Milk	YW	SC	IMF	REA	Fat	%RP	BW	WW	YW
3.2	42	23	71	0.13	0.44	-0.002			4/104	4/104	4/102

Ultrasound Data	
MF	3.86/99
REA	13.80/110
Fat	0.21/75

Lot 5126 - A super attractive, very well made son of BT Right Time 24J. 5126 is an eye - catcher. He is long bodied, smooth shoulder, and very correct on his feet and legs. He combines this with a tremendous amount of muscle, and posted a REA ratio of 110. His dam is a super uddered daughter of Mc Cumber 6122 Equator 8113, and has excellent ratios with a WWR 4/104, YWR 4/102, IMF 4/114, and REA 4/101.

5128 MC Cumber 205 RT Time 5128

Calved: 02/12/2005

Reg. No. 15050812

Leachman Right Time
S Right Time 205
S Elcona 076

N Bar Emulation EXT
Leachman Erica 0025
Connealy Frontline
Legendary Elcona 552
Leachman Right Time
Sitz Everelda Entense 1905
Hilltop Rito H218
Miss Wix 5168 of Mc Cumber

Individual Record	
BW	88
WW	710
205	736
WR	107
ADG	3.65
YW	1192
365	1320
YR	107

BT Right Time 24J
Miss Wix 364 of Mc Cumber
Miss Wix 9131 of Mc Cumber

EPDs		Dam's Production									
BW	WW	Milk	YW	SC	IMF	REA	Fat	%RP	BW	WW	YW
3.5	39	22	72	-0.04	0.15	0.015			1/106	1/107	1/107

Ultrasound Data	
MF	3.13/82
REA	13.90/113
Fat	0.23/88

Lot 5128 - A double bred Right Time with excellent ratios across the board. 5128 posted a 205 day weight of 736 lbs. to ratio 107 as his dam's first calf. He gained 3.65 lbs./day and recorded a 365 day weight of 1320 lbs. to ratio 107. He also had an ADJ. REA of nearly 14.0 in. to ratio 113. His dam is a super daughter of BT Right Time 24J, and a member of the Miss Wix cow family. She is moderate framed, deep bodied, easy fleshing, and has a perfect udder.

5130 MC Cumber 7078 VRD 5130

Calved: 02/12/2005

Reg. No. 15050815

Connealy Dateline
Vermilion Dateline 7078
Vermilion Blackbird 5044

D H D Traveler 6807
Eila Eila of Conanga
Leachman Right Time
Vermilion Blackbird 3525
Mc Cumber Foundation 701
Gale 607 of Mc Cumber
Mr Wix of Mc Cumber 204
B Pride 7159 of Mc Cumber

Individual Record	
BW	108
WW	868
205	846
WR	126
ADG	3.61
YW	1345
365	1424
YR	114

Mc Cumber Next Step 9012
B Pride 239 of Mc Cumber
B Pride 090 of Mc Cumber

EPDs		Dam's Production									
BW	WW	Milk	YW	SC	IMF	REA	Fat	%RP	BW	WW	YW
6.4	56	26	92	-0.13	0.53	-0.003			2/107	2/109	2/101

Ultrasound Data	
MF	3.31/85
REA	14.50/116
Fat	0.18/64

Lot 5130 - Selling 2/3 interest and full possession - Take a look at this performance powerhouse. He combines muscle, length, depth, and correctness into one impressive package. This scale crusher is as long as a freight train, and I believe that is where the extra BW comes from. 5130 weaned off at 868 lbs. with a 205 day weight of 846 lbs. to ratio 126 and come in as the highest weaning weight bull of the calf crop. His WW EPD of +56 ranks in the top 2% of the Angus breed, and he posted a 365 day weight of 1424 lbs. to ratio 114, to rank among the top yearling weight bulls of the calf crop. **He was raised by a 1325 lb. cow, who is a member of the B Pride cow family. Neither the cows nor the calves received any pasture supplementation, except for salt and mineral.** This pair was quite a site this summer. She has produced one son that sold to Darrel Walters, ND, in last year's sale.



Mc Cumber 7078 VRD 5130

5131 MC Cumber 7078 VRD 5131

Calved: 02/12/2005 Reg. No. 15050816

Connealy Dateline
Vermilion Dateline 7078
Vermilion Dateline

D H D Traveler 6807
Eila Eila of Conanga
Leachman Right Time
Vermilion Blackbird 3525
Mc Cumber 124 Traveler 212
Miss Wix 235 of Mc Cumber
o54 P J M 1438
B Pride 4103 of Mc Cumber

Individual Record	
BW	98
WW	700
305	667
WR	99
ADG	3.61
YW	1176
365	1245
YR	100
Ultrasound Data	
MF	3.00/77
REA	12.10/97
Fat	0.20/71

Mc Cumber Foundation 701
B Pride VJR 1130 Mc Cumber
B Pride 287 of Mc Cumber

EPDs								Dam's Production		
BW	WW	Milk	YW	SC	IMF	REA	Fat %RP	BW	WW	YW
4.7	41	22	79		-0.13	0.53	-0.003	3/106	3/104	2/105

Lot 5131 - A moderate framed, long bodied, big run, ped bull. His dam is a typically good daughter of Mc Cumber Foundation 701. She is deep bodied, easy fleshing, stands on a big, sound foot, and has an exceptional udder. She just misses as qualifying for pathfinder with a WWR 3/104, YWR 2/105, and has settled AI every year. Her dam was a top pathfinder cow that sold through our 2000 cow sale to John and Violet Runkel in PA. She has ratio's of 9/106, and 7/102.

5132 MC Cumber Total Value 5132

Calved: 02/12/2005 Reg. No. 15050817

Vermilion Dateline 7078
Mc Cumber 7111 Total Value
Miss Wix 7111 of Mc Cumber

Connealy Dateline
Vermilion Blackbird 5044
G D A R Traveler 71
Miss Wix 365 of Mc Cumber
V D A R Rito 953
Gale 607 of Mc Cumber
Mc Cumber 124 Traveler 212
Enchantress 766 Mc Cumber

Individual Record	
BW	98
WW	726
305	673
WR	100
ADG	3.29
YW	1160
365	1199
YR	96
Ultrasound Data	
MF	3.51/90
REA	12.20/98
Fat	0.13/46

Mc Cumber 953 Rito 420
Enchantress 816 Mc Cumber
Enchantress 687 Mc Cumber

EPDs								Dam's Production		
BW	WW	Milk	YW	SC	IMF	REA	Fat %RP	BW	WW	YW
3.1	34	26	57		-0.01	0.10	-0.012	6/102	6/104	5/99

Lot 5132 - This top-notch son of Mc Cumber 7111 Total Value, is long, correct, and is produced by a moderate framed, good milking pathfinder dam. She has a WWR 6/104, and a YWR 5/99. This Total Value sire group has top end bulls all the way through it.



Miss Wix 7111 of Mc Cumber
Paternal Grand dam of Lot 5132

5133 MC Cumber Total Value 5133

Calved: 02/12/2005 Reg. No. 15050818

Vermilion Dateline 7078
Mc Cumber 7111 Total Value
Miss Wix 7111 of Mc Cumber

Connealy Dateline
Vermilion Blackbird 5044
G D A R Traveler 71
Miss Wix 365 of Mc Cumber
Sitz Traveler 9929
BT Everelda Entense 57D
Mc Cumber 124 Traveler 212
B Pride 245 of Mc Cumber

Individual Record	
BW	97
WW	708
305	698
WR	104
ADG	3.41
YW	1158
365	1244
YR	100
Ultrasound Data	
MF	4.24/109
REA	12.50/100
Fat	0.29/104

BT Traveler 228K
B Pride 273 of Mc Cumber
B Pride 690 of Mc Cumber

EPDs								Dam's Production		
BW	WW	Milk	YW	SC	IMF	REA	Fat %RP	BW	WW	YW
3.4	37	29	62		0.16	0.16	0.011	2/106	2/105	2/102

Lot 5133 - Another son of Total Value, that is naturally thick, deep bodied, and super on his feet and legs. His dam is a very productive young daughter of BT Traveler 228K. The 14 daughters of 228K have produced 24 progeny with a WWR of 104.

5138 MC Cumber Total Value 5138

Calved: 02/14/2005 Reg. No. 15050823

Vermilion Dateline 7078
MC Cumber 7111 Total Value
Miss Wix 7111 of Mc Cumber

Connealy Dateline
Vermilion Blackbird 5044
G D A R Traveler 71
Miss Wix 365 of Mc Cumber
G D A R Rainmaker 340
SLS Barbara Perfection 2571
Mc Cumber 953 Rito 420
Miss Wix 6101 of Mc Cumber

Individual Record	
BW	99
WW	704
305	656
WR	97
ADG	3.77
YW	1202
365	1259
YR	101
Ultrasound Data	
MF	3.38/87
REA	14.20/114
Fat	0.36/129

Sitz S L S Rainmaker 7596
Miss Wix 0104 of Mc Cumber
Miss Wix 843 of Mc Cumber

EPDs								Dam's Production		
BW	WW	Milk	YW	SC	IMF	REA	Fat %RP	BW	WW	YW
3.7	38	24	72		-0.09	0.28	0.017	4/101	4/98	4/102

Lot 5138 - This good - looking son of Total Value, is heavy muscled, stout made, and very long. He puts a foot down in all four corners, and tracks wide and true. His dam is an easy fleshing, deep - bodied member of the Miss Wix cow family. She descends from a line of cows that includes 4 consecutive generations of pathfinders.

5142 MC Cumber 383 Tradition 5142

Calved: 02/15/2005 Reg. No. 15050827

Leachman Right Time
MC Cumber Tradition 383
Lassie 7015 of Mc Cumber

N Bar Emulation EXT
Leachman Erica 0025
Mc Cumber 124 Traveler 212
Lassie 648 of Mc Cumber
A A R New Trend
BT Everelda Entense 57D
Circle Oak Lucys Boy 625
Rosetta 777 HC of Mc Cumber

Individual Record	
BW	92
WW	660
305	696
WR	101
ADG	3.82
YW	1164
365	1307
YR	105
Ultrasound Data	
MF	4.38/115
REA	12.20/99
Fat	0.32/123

BT New Trend 172K
Rosetta 350 HC of Mc Cumber
Rosetta 9184 of Mc Cumber

EPDs								Dam's Production		
BW	WW	Milk	YW	SC	IMF	REA	Fat %RP	BW	WW	YW
3.9	34	26	71		0.08	0.12	0.029	1/111	1/101	1/105

Lot 5142 - Selling 2/3 interest and full possession - This thick, muscular, well - balanced son of Mc Cumber Tradition 383 is a top - notch herd sire prospect. He had a 205 day weight of nearly 700 lbs., as his dam's first calf and earned a 365 day weight of 1307 lbs. to ratio 105. An ultrasound IMF score of 4.38, and a ratio of 115 place him among the top of his contemporary group. His dam is a top producing daughter of BT New Trend 172K, and a member of the Rosetta Family. The Rosetta family has held their own around the country, including at Schaff Angus Valley in ND where 2 sons of Rosetta cows sold for \$50,000, and \$28,000. A daughter also sold for \$14,000 in this same sale. Rosetta 350 traces directly to Rosetta 405 of Mc Cumber, the dam of Mc Cumber Stretch 604. The Grand dam of 5142 has produced one herd sire for \$6250 that sold to Ted and Toby Armstrong of Rolette.

5143 MC Cumber 2198 Equator 5143

Calved: 02/16/2005 Reg. No. 15050828

Mc Cumber 6122 Equator 8113
MC Cumber 8113 Equator 2198
Erianna 825 of Mc Cumber

Mc Cumber Equator 6122
Rosetta 421 of Mc Cumber
Circle Oak Lucys Boy 625
Erianna 6148 of Mc Cumber
Traveler 1148 G D A R
Miss Wix 5007 of Mc Cumber
Mc Cumber Rito 0054
Blackcap 03 of Mc Cumber

Individual Record	
BW	88
WW	690
305	725
WR	106
ADG	3.61
YW	1166
365	1303
YR	106
Ultrasound Data	
MF	3.81/100
REA	11.50/93
Fat	0.32/123

MC Cumber 1148 Traveler 0002
Blackcap 3198 of Mc Cumber
Blackcap 306 of Mc Cumber

EPDs								Dam's Production		
BW	WW	Milk	YW	SC	IMF	REA	Fat %RP	BW	WW	YW
3.1	27	25	50		-0.01	0.02	0.010	1/106	1/106	1/106

Lot 5143 - Recommended for use on heifers - This Equator bred bull has performed superbly. He has a 205 day weight of 725 lbs. to ratio 106, and recorded a 365 day weight of 1303 lbs. to ratio 106 as well. 5143 is a smooth fronted, long bodied bull with a lot of rib and natural thickness.

5146 MC Cumber 383 Tradition 5146

Calved: 02/17/2005

Reg. No. 15050830

Leachman Right Time
 MC Cumber Tradition 383
 Lassie 7015 of Mc Cumber

BT New Trend 172K
 Blackcap 311 of Mc Cumber
 Blackcap 9125 of Mc Cumber

N Bar Emulation EXT
 Leachman Erica 0025
 Mc Cumber 124 Traveler 212
 Lassie 648 of Mc Cumber
 A A R New Trend
 BT Everelda Entense 57D
 Mc Cumber Powertrain HC 1025
 Blackcap 532 of Mc Cumber

Individual Record	
BW	97
WW	676
305	714
WR	104
ADG	3.53
YW	1142
365	1279
YR	103

EPDs				Dam's Production						
BW	WW	Milk	YW	SC	IMF	REA	Fat %RP	BW	WW	YW
4.9	37	25	68	0.01	0.42	0.005		1/117	1/104	1/103

Lot 5146 - This stout made, heavy muscled son of Mc Cumber Tradition 383, scanned one of the largest REA of the calf crop. He is moderate framed, deep bodied, and structurally sound. To go along with his exceptional phenotype he had a 205 day weight of 714 lbs. and a 1279 lb. 365 day weight.

5147 MC Cumber Total Value 5147

Calved: 02/17/2005

Reg. No. 15050831

Vermilion Dateline 7078
 MC Cumber 7111 Total Value
 Miss Wix 7111 of Mc Cumber

Mc Cumber 71 Traveler 7114
 Blackcap 015 of Mc Cumber
 Blackcap 8165 of Mc Cumber

Connealy Dateline
 Vermilion Blackbird 5044
 G D A R Traveler 71
 Miss Wix 365 of Mc Cumber
 G D A R Traveler 71
 Miss Wix 365 of Mc Cumber
 Mc Cumber Equator 6122
 Blackcap 231 of Mc Cumber

Individual Record	
BW	93
WW	722
305	678
WR	101
ADG	2.94
YW	1110
365	1148
YR	92

EPDs				Dam's Production						
BW	WW	Milk	YW	SC	IMF	REA	Fat %RP	BW	WW	YW
2.7	36	28	53	0.00	0.21	0.016		4/101	4/100	4/96

Lot 5147 - Selling 2/3 interest and full possession - Recommended for use on heifers - This meat machine, is big topped, wide based, and very expressive in his hind quarter. 5147 is moderate framed, deep bodied, and superb on his feet and legs. He is the type of bull that will decrease mature frame size, and make a set of **PROBLEM FREE, HIGHLY ADAPTABLE, LOW MAINTENANCE** cows. His pedigree is also very intriguing. He combines the full brother and sister, Mc Cumber 71 Traveler 7114, and Miss Wix 7111 of Mc Cumber. He also traces to their maternal brother, and Accelerated Genetics sire Mc Cumber Equator 6122. This makes 5147 triple bred to Miss Wix 365 of Mc Cumber very close in the pedigree. His dam, Blackcap 015 of Mc Cumber, is a moderate framed cow, that is easy fleshing, deep bodied, and has an excellent udder. Her production has also been solid with a WWR of 4/100, in addition to this she has settled AI every year.



Mc Cumber Total Value 5147

5148 MC Cumber 202 Classic 5148

Calved: 02/17/2005

Reg. No. 15050832

Tehama Bando 155
 MC Cumber Classic 202
 Miss Wix 365 of Mc Cumber

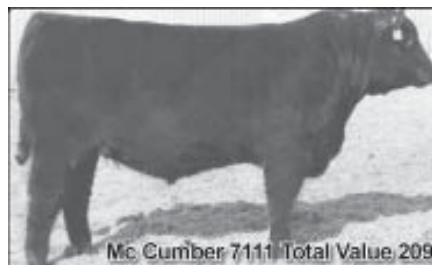
Mc Cumber 6122 Equator 8113
 Rosetta 2195 of Mc Cumber
 Rosetta 5158 of Mc Cumber

Band 234 of Ideal 3163
 Tehama Blackcap G373
 Shoshone 247 P J M
 Miss Wix 294 of Mc Cumber
 Mc Cumber Equator 6122
 Rosetta 421 of Mc Cumber
 Tehama Bando 155
 Rosetta 214 of Mc Cumber

Individual Record	
BW	91
WW	638
305	641
WR	95
ADG	3.53
YW	1104
365	1206
YR	97

EPDs				Dam's Production						
BW	WW	Milk	YW	SC	IMF	REA	Fat %RP	BW	WW	YW
2.1	28	24	50	0.06	0.14	-0.021		2/102	2/102	2/101

Lot 5148 - Recommended for use on heifers - A solid bull by Mc Cumber Classic 202, and out of a daughter of Mc Cumber 6122 Equator 8113. His dam is a member of the top producing Rosetta cow family, and a direct descendant of Rosetta 405 of Mc Cumber, the dam of Mc Cumber Stretch 604.



Sire of Lot 5147



Lot 5147 traces to Miss Wix 365 of Mc Cumber three times!!

5151 MC Cumber 2700 RT Time 5151

Calved: 02/19/2005

Reg. No. 15050835

N Bar Emulation EXT
Leachman Right Time
Leachman Erica 0025

Emulation N Bar 5522
N Bar Primrose 2424
Tehama Bando 155
Leachman Erica 8058
Traveler 124 G D A R
Miss Wix 365 of Mc Cumber
Shoshone Viking GD60
Miss Wix 117 of Mc Cumber

Individual Record	
BW	94
WW	714
305	674
WR	100
ADG	3.14
YW	1128
365	1176
YR	94

Mc Cumber 124 Traveler 212
Miss Wix 9026 of Mc Cumber
Miss Wix 235 of Mc Cumber

EPDs								Dam's Production		
BW	WW	Milk	YW	SC	IMF	REA	Fat %RP	BW	WW	YW
2.9	34	20	58		0.06	0.03	0.030	5/100	5/100	5/98

Ultrasound Data	
MF	3.99/102
REA	11.80/94
Fat	0.34/121

Lot 5151 - Selling 2/3 interest and full possession - This masculine, moderate framed son of Leachman Right Time, was produced by the youngest full sister to Mc Cumber Foundation 701. **5151 should produce excellent females that are moderate framed, easy keeping, and perfect uddered,** and the males will be thick, masculine, and deep bodied. Miss Wix 9026 of Mc Cumber has been an excellent cow. She settles AI every year, and is a problem free, low maintenance type of female. She has produced two graduates of our bull sale that have sold to Bert and Jeff Kuntz, ND, and Lonnie Anderson, ND, and has also produced two daughters that have been retained as replacement females.



Miss Wix 235 of Mc Cumber

Maternal Grand dam of Lot 5151

5154 MC Cumber 202 Classic 5154

Calved: 02/19/2005

Reg. No. 15050838

Tehama Bando 155
MC Cumber Classic 202
Miss Wix 365 of Mc Cumber

Band 234 of Ideal 3163
Tehama Blackcap G373
Shoshone 247 P J M
Miss Wix 294 of Mc Cumber
Papa Equator 2928
Miss Wix 365 of Mc Cumber
Mc Cumber 124 Traveler 212
Blackcap 024 of Mc Cumber

Individual Record	
BW	88
WW	692
305	653
WR	97
ADG	3.44
YW	1146
365	1203
YR	97

Mc Cumber Equator 6122
Blackcap 0164 of Mc Cumber
Blackcap 772 of Mc Cumber

EPDs								Dam's Production		
BW	WW	Milk	YW	SC	IMF	REA	Fat %RP	BW	WW	YW
1.5	26	24	45		0.04	0.25	-0.018	4/101	4/101	4/100

Ultrasound Data	
MF	4.09/105
REA	13.10/105
Fat	0.27/96

Lot 5154 - Recommended for use on heifers - 5154 is a smooth shouldered, long bodied bull with an IMF ratio of 105, and REA ratio of 105. His dam is a feminine fronted, good uddered daughter of Mc Cumber Equator 6122.



Mc Cumber Classic 202

Sire of Lot 5157

5155 MC Cumber 202 Classic 5155

Calved: 02/21/2005

Reg. No. 15050839

Tehama Bando 155
MC Cumber Classic 202
Miss Wix 365 of Mc Cumber

Band 234 of Ideal 3163
Tehama Blackcap G373
Shoshone 247 P J M
Miss Wix 294 of Mc Cumber
Tehama Bando 155
Miss Wix 204 of Mc Cumber
Mc Cumber 054 Rito 326
B Pride 71 of Mc Cumber

Individual Record	
BW	89
WW	650
305	617
WR	92
ADG	3.23
YW	1076
365	1134
YR	91

Mr Wix of Mc Cumber 204
B Pride 090 of Mc Cumber
B Pride 7159 of Mc Cumber

EPDs								Dam's Production		
BW	WW	Milk	YW	SC	IMF	REA	Fat %RP	BW	WW	YW
2.1	26	24	45		0.08	-0.10	-0.013	4/98	4/101	4/102

Ultrasound Data	
MF	4.01/103
REA	11.50/92
Fat	0.23/82

Lot 5155 - Recommended for use on heifers - Another calving ease son of Mc Cumber Classic 202. His dam is a powerful daughter of Mr. Wix of Mc Cumber, and a maternal sister to our High selling bull in the 2002 bull sale, Mc Cumber 8113 Equator 1190. B Pride 090 of Mc Cumber is also the Grand dam to the performance powerhouse lot 5130.

5157 MC Cumber 202 Classic 5157

Calved: 02/21/2005

Reg. No. 15050841

Tehama Bando 155
MC Cumber Classic 202
Miss Wix 365 of Mc Cumber

Band 234 of Ideal 3163
Tehama Blackcap G373
Shoshone 247 P J M
Miss Wix 294 of Mc Cumber
Tehama Bando 155
Miss Wix 204 of Mc Cumber
Mc Cumber 124 Traveler 212
Lassie 648 of Mc Cumber

Individual Record	
BW	110
WW	742
305	705
WR	105
ADG	2.83
YW	1116
365	1158
YR	93

Mr Wix of Mc Cumber 204
Lassie 790 of Mc Cumber
Lassie 462 of Mc Cumber

EPDs								Dam's Production		
BW	WW	Milk	YW	SC	IMF	REA	Fat %RP	BW	WW	YW
4.9	34	23	51		-0.04	0.07	-0.017	6/104	6/96	4/95

Ultrasound Data	
MF	3.37/86
REA	12.70/102
Fat	0.25/89

Lot 5157 - Top weaning weight son of Mc Cumber Classic 202. 5157 has a little extra birth weight, but would expect him to be fine.



Mc Cumber 8113 Equator 1190

Maternal Brother to Dam of Lot 5155

5159 MC Cumber 202 Classic 5159

Calved: 02/22/2005

Reg. No. 15050843

Tehama Bando 155
MC Cumber Classic 202
Miss Wix 365 of Mc Cumber

Band 234 of Ideal 3163
Tehama Blackcap G373
Shoshone 247 P J M
Miss Wix 294 of Mc Cumber
Traveler 124 G D A R
Miss Wix 365 of Mc Cumber
Rito 054 G D A R
Miss Wix 756 of Mc Cumber

Individual Record	
BW	98
WW	648
205	660
WR	98
ADG	3.80
YW	1150
365	1268
YR	102

EPDs		Dam's Production						
BW	WW	Milk	YW	SC	IMF	REA	Fat	%RP
4.0	26	24	47		0.00	0.05	-0.025	
Ultrasound Data		BW	WW	YW				
MF	3.61/93	2/104	2/101	2/100				
REA	12.50/100							
Fat	0.19/68							

Lot 5159 - A real growthy son of Classic, out of a super uddered, feminine fronted daughter of Mc Cumber 124 Traveler 212. 5159 did very well on test gaining 3.80 lbs./ day. His dam has produced one other son that sold through our 2005 bull sale to Mike and Sherri Peterson ND. His dam is a daughter of Miss Wix 5168 of Mc Cumber, who is a maternal sister to Miss Wix 918 of Mc Cumber. Miss Wix 918 was the cow that produced many sale toppers, and top offspring for Shady Brook in TN.



Miss Wix 5168 of Mc Cumber

Maternal Grand dam of Lot 5159

5160 MC Cumber 202 Classic 5160

Calved: 02/25/2005

Reg. No. 15050845

Tehama Bando 155
MC Cumber Classic 202
Miss Wix 365 of Mc Cumber

Band 234 of Ideal 3163
Tehama Blackcap G373
Shoshone 247 P J M
Miss Wix 294 of Mc Cumber
A A R New Trend
BT Everelda Entense 57D
G D A R Gold Nugget 766
G D A R Lady Barbola 4186

Individual Record	
BW	86
WW	662
205	678
WR	101
ADG	3.32
YW	1100
365	1209
YR	97

EPDs		Dam's Production						
BW	WW	Milk	YW	SC	IMF	REA	Fat	%RP
1.5	31	26	50		-0.01	-0.06	-0.011	
Ultrasound Data		BW	WW	YW				
MF	3.71/95	2/95	2/98	2/96				
REA	12.00/96							
Fat	0.31/111							

Lot 5160 - Recommended for use on heifers - This calving ease prospect by Mc Cumber Classic 202 is a smooth fronted, long bodied bull with adequate thickness. His dam is a beautiful, good milking daughter of BT New Trend 172K. This pen of younger bulls is with out a doubt the best group of young bulls that we have offered. They are definitely worth sorting through. There are quality bulls, and herd bull prospects from top to bottom in this sale.

5161 MC Cumber 202 Classic 5161

Calved: 02/26/2005

Reg. No. 15050846

Tehama Bando 155
MC Cumber Classic 202
Miss Wix 365 of Mc Cumber

Band 234 of Ideal 3163
Tehama Blackcap G373
Shoshone 247 P J M
Miss Wix 294 of Mc Cumber
Papa Equator 2928
Rosetta 048 of Mc Cumber
Mc Cumber 124 Traveler 212
Miss Wix 235 of Mc Cumber

Individual Record	
BW	89
WW	648
205	666
WR	99
ADG	3.47
YW	1106
365	1221
YR	98

EPDs		Dam's Production						
BW	WW	Milk	YW	SC	IMF	REA	Fat	%RP
2.5	30	24	51		0.10	0.14	-0.008	
Ultrasound Data		BW	WW	YW				
MF	4.28/110	2/99	2/103	2/102				
REA	11.50/92							
Fat	0.20/71							

Lot 5161 - Recommended for use on heifers - Another top quality calving ease bull by Mc Cumber Classic 202. His dam is a deep bodied, easy fleshing, wonderful uddered daughter of Mc Cumber Powertrain 1025. She is a member of the Miss Wix cow family and a daughter of the youngest sister to Mc Cumber Foundation 701. Miss Wix 293 of Mc Cumber has done an excellent job to this point.

Miss Wix 293 - WWR 2/103, YWR 2/102
Miss Wix 9026 - WWR 5/100, YWR 5/98 (Full sister to Foundation)
Miss Wix 235 - WWR 10/104, YWR 10/104 (dam of Mc Cumber Foundation 701)
Miss Wix 117 - WWR 10/119, YWR 9/111 (pathfinder)
Miss Wix 293 also produced one of the top herd sire prospects in last year's sale selling to Bruce Rockers in KS for \$4500.

5162 MC Cumber 202 Classic 5162

Calved: 02/26/2005

Reg. No. 15050847

Tehama Bando 155
MC Cumber Classic 202
Miss Wix 365 of Mc Cumber

Band 234 of Ideal 3163
Tehama Blackcap G373
Shoshone 247 P J M
Miss Wix 294 of Mc Cumber
N Bar Emulation EXT
Leachman Erica 0025
A A R New Trend
Lassie 252 of Mc Cumber

Individual Record	
BW	98
WW	632
205	651
WR	97
ADG	4.38
YW	1210
365	1352
YR	109

EPDs		Dam's Production						
BW	WW	Milk	YW	SC	IMF	REA	Fat	%RP
3.6	31	22	62		0.05	0.06	-0.020	
Ultrasound Data		BW	WW	YW				
MF	3.93/101	2/104	2/99	2/105				
REA	12.70/102							
Fat	0.19/68							

Lot 5162 - This big, stout, heavy muscled son of Mc Cumber Classic 202, combined this with a ADG of 4.38, which ranks as one the top bulls in the calf crop. He also earned a 365 day weight of 1352 lbs. to ratio 109. Lassie 2158 of Mc Cumber is an excellent daughter of Leachman Right Time, and has a flawless udder. She is also a full sister to the 3rd high selling bred heifer of our 2003 cow sale, which sold to Koupal Angus Ranch in SD. Her other full sister is the dam of Mc Cumber Total Value 504.



Lassie 688 of Mc Cumber

Maternal Sisters to Lot 5162



Lassie 974 of Mc Cumber

5168 MC Cumber 202 Classic 5168

Calved: 02/27/2005 Reg. No. 15050852

Tehama Bando 155
 MC Cumber Classic 202
 Miss Wix 365 of Mc Cumber
 Mc Cumber 054 Rito 326
 B Pride 2185 of Mc Cumber
 B Pride 5122 of Mc Cumber

Band 234 of Ideal 3163
 Tehama Blackcap G373
 Shoshone 247 P J M
 Miss Wix 294 of Mc Cumber
 Rito 054 G D A R
 Miss Wix 365 of Mc Cumber
 Mc Cumber 124 Traveler 212
 B Pride 274 of Mc Cumber

Individual Record	
BW	98
WW	702
305	720
WWR	107
ADG	3.56
YW	1172
365	1290
YR	104
Ultrasound Data	
MF	3.93/101
REA	14.40/115
Fat	0.17/61

EPDs			Dam's Production								
BW	WW	Milk	YW	SC	IMF	REA	Fat	%RP	BW	WW	YW
4.0	29	26	46		0.08	0.25	-0.011		2/107	2/102	2/101

Lot 5168 - Another big, stout, heavy muscled son of Mc Cumber Classic 202. He weaned off his tremendous dam with a 205 day weight of 720 lbs. to ratio 107. He gained very well and had a 365 day weight of nearly 1300 lbs. to ratio 104. His dam is wonderful daughter of Mc Cumber 054 Rito 326. She is a deep bodied, roomy female, that is easy fleshing, feminine fronted, and has an excellent udder. The cow production behind her has been excellent as well:

B Pride 2185 - WWR 2/102, YWR 2/101
 B Pride 5122 - WWR 5/111, YWR 4/107 (pathfinder)
 B Pride 274 - WWR 5/106, YWR 4/104
 She has full sisters working for Skip Riddel TX, and Karla and Ryan Spence, ND.

5170 MC Cumber 202 Classic 5170

Calved: 03/1/2005 Reg. No. 15050854

Tehama Bando 155
 MC Cumber Classic 202
 Miss Wix 365 of Mc Cumber
 G D A R Band 477
 Rosetta 849 of Mc Cumber
 Rosetta 541 of Mc Cumber

Band 234 of Ideal 3163
 Tehama Blackcap G373
 Shoshone 247 P J M
 Miss Wix 294 of Mc Cumber
 Tehama Band 207
 G D A R Blackcap Lad 927
 Mc Cumber 124 Traveler 212
 Rosetta 812 of Mc Cumber

Individual Record	
BW	98
WW	674
305	655
WWR	97
ADG	3.91
YW	1190
365	1281
YR	103
Ultrasound Data	
MF	3.30/85
REA	14.40/115
Fat	0.25/89

EPDs			Dam's Production								
BW	WW	Milk	YW	SC	IMF	REA	Fat	%RP	BW	WW	YW
4.0	28	24	52		-0.13	0.38	-0.012		5/105	5/106	5/105

Lot 5170 - A moderate framed, extremely heavy muscled bull by Classic, and out of a top producing cow. 5170 had a REA ratio of 115 to rank as one of the largest Ribeye bulls of the group. His dam has produced 2 sons, which have sold through our sales to Mike Halverson ND, and Tony Lindseth.



Rosetta 541 of Mc Cumber

Maternal Grand dam to Lot 5170

5172 MC Cumber 202 Classic 5172

Calved: 03/1/2005 Reg. No. 15050856

Tehama Bando 155
 MC Cumber Classic 202
 Miss Wix 365 of Mc Cumber
 BT New Trend 172K
 B Pride 2219 JVR Mc Cumber
 B Pride 287 of Mc Cumber

Band 234 of Ideal 3163
 Tehama Blackcap G373
 Shoshone 247 P J M
 Miss Wix 294 of Mc Cumber
 A A R New Trend
 BT Everelda Entense 57D
 054 P J M 1438
 B Pride 4103 of Mc Cumber

Individual Record	
BW	99
WW	662
305	686
WWR	102
ADG	4.18
YW	1214
365	1355
YR	109
Ultrasound Data	
MF	4.17/107
REA	11.40/91
Fat	0.29/104

EPDs			Dam's Production								
BW	WW	Milk	YW	SC	IMF	REA	Fat	%RP	BW	WW	YW
3.3	29	28	54		0.04	-0.06	-0.018		2/106	2/108	2/113

Lot 5172 - One of the best sons of Mc Cumber Classic 202 in the sale. He is long bodied, smooth shouldered, and combines this with depth of rib, stoutness, and performance. He weaned off his tremendous dam with a WWR of 102, turned in one of the top ADG at 4.18, and earned a 365 day weight of 1355 lbs. to ratio 109. His dam is one of the top daughters of BT New Trend 172K we have in the herd. She is a deep bodied, easy fleshing female, with an absolutely perfect udder. She has already produced one herd bull selling for \$5250 to a registered Angus breeder in MN. B Pride 2219 of Mc Cumber is already well on her way to following her pathfinder dams footsteps with a WWR of 2/108, and YWR of 2/113. **Don't overlook this top gaining bull!!!!**



Mc Cumber 7078 VRD 3116

Maternal Brother to Dam of Lot 5173

5173 MC Cumber 1206 N Trend 5173

Calved: 03/2/2005 Reg. No. 15050857

A A R New Trend
 MC Cumber New Trend 1206
 Miss Wix 705 of Mc Cumber
 Mc Cumber 953 Rito 420
 Gale 06 of Mc Cumber
 Gale 836 of Mc Cumber

V D A R Shoshone 548
 Donna A A R 74
 Mc Cumber 124 Traveler 212
 Miss Wix 235 of Mc Cumber
 V D A R Rito 953
 Gale 607 of Mc Cumber
 Circle Oak Lucys Boy 625
 Gale 6129 of Mc Cumber

Individual Record	
BW	92
WW	672
305	655
WWR	97
ADG	3.27
YW	1104
365	1178
YR	94
Ultrasound Data	
MF	4.12/106
REA	12.50/100
Fat	0.28/100

EPDs			Dam's Production								
BW	WW	Milk	YW	SC	IMF	REA	Fat	%RP	BW	WW	YW
2.3	14	27	28		0.03	0.16	-0.011		3/96	3/100	1/94

Lot 5173 - Recommended for use on larger framed heifers - This top scanning son of Mc Cumber New Trend 1206 posted top - notch ultrasound data. He is a heavy muscled, deep bodied bull, that is long, and very correct on his feet and legs. His dam is a maternal sister to Mc Cumber 7078 VRD 3116, who sold as the 2nd High selling bull in our 2004 bull sale to Sweiger Brothers in MO. The first 1206 daughters have calved this spring, and look like they will make excellent cows. They are moderate framed, easy fleshing, and have superb udders. The EPDs on these 1206 sons indicate that they don't have much performance, but 1206 has been used only as a clean - up bull, so the calves tend to be the younger bulls of the group. They will grow, and are heavy muscled, deep bodied bulls that will sire tremendous females.

5174 MC Cumber 1206 N Trend 5174

Calved: 03/2/2005

Reg. No. 15050858

AAR New Trend
MC Cumber New Trend 1206
Miss Wix 705 of Mc Cumber

V D A R Shoshone 548
Donna AAR 74
Mc Cumber 124 Traveler 212
Miss Wix 235 of Mc Cumber
Papa Equator 2928
Rosetta 048 of Mc Cumber
Tehama Bando 155
Blackcap 293 of Mc Cumber

Individual Record	
BW	98
WW	626
205	611
WR	91
ADG	3.58
YW	1098
365	1184
YR	95

Mc Cumber Powertrain HC 1025
Blackcap 8133 of Mc Cumber
Blackcap 437 of Mc Cumber

Ultrasound Data	
MF	3.54/91
REA	11.90/95
Fat	0.26/93

EPDs								Dam's Production			
BW	WW	Milk	YW	SC	IMF	REA	Fat	%RP	BW	WW	YW
4.2	20	22	42		-0.02	0.10	-0.004		6/103	6/97	4/102

Lot 5174 - Another heavy muscled, deep bodied son of Mc Cumber New Trend 1206. His dam is a powerhouse daughter of Mc Cumber Powertrain 1025. **The 1206 bulls will work under any environment and thrive.**



Mc Cumber Tradition 383

Sire of Lot 5182

5177 MC Cumber 202 Classic 5177

Calved: 03/4/2005

Reg. No. 15050861

Tehama Bando 155
MC Cumber Classic 202
Miss Wix 365 of Mc Cumber

Band 234 of Ideal 3163
Tehama Blackcap G373
Shoshone 247 P J M
Miss Wix 294 of Mc Cumber
Papa Equator 2928
Rosetta 048 of Mc Cumber
Mc Cumber 054 Rito 326
Lassie 272 of Mc Cumber

Individual Record	
BW	97
WW	674
205	662
WR	98
ADG	3.47
YW	1132
365	1217
YR	97

Mc Cumber Powertrain HC 1025
Lassie 0142 of Mc Cumber
Lassie 5128 of Mc Cumber

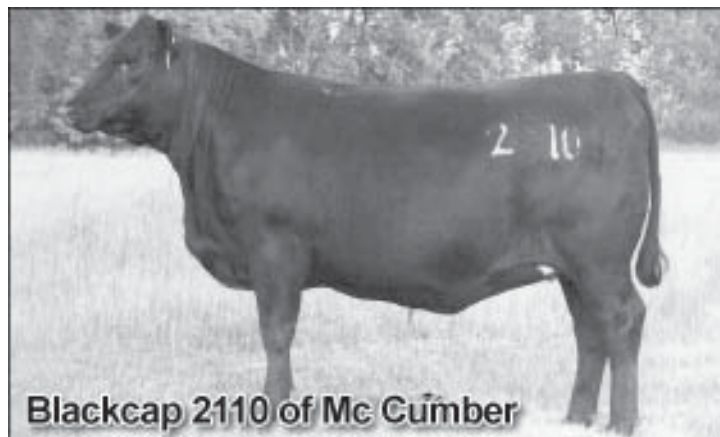
Ultrasound Data	
MF	3.88/99
REA	13.00/104
Fat	0.19/68

EPDs								Dam's Production			
BW	WW	Milk	YW	SC	IMF	REA	Fat	%RP	BW	WW	YW
3.3	32	22	53		0.08	0.16	-0.020		4/106	4/96	4/97

Lot 5177 - A bigger framed son of Mc Cumber Classic 202, with above average REA.



These females are from the same family as the Dam of Lot 5177



Blackcap 2110 of Mc Cumber

Maternal Sister to Lot 5174

5182 MC Cumber 383 Tradition 5182

Calved: 03/8/2005

Reg. No. 15050866

Leachman Right Time
MC Cumber Tradition 383
Lassie 7015 of Mc Cumber

N Bar Emulation EXT
Leachman Erica 0025
Mc Cumber 124 Traveler 212
Lassie 648 of Mc Cumber
AAR New Trend
BT Everelda Entense 57D
G D A R Band 477
Rosetta 541 of Mc Cumber

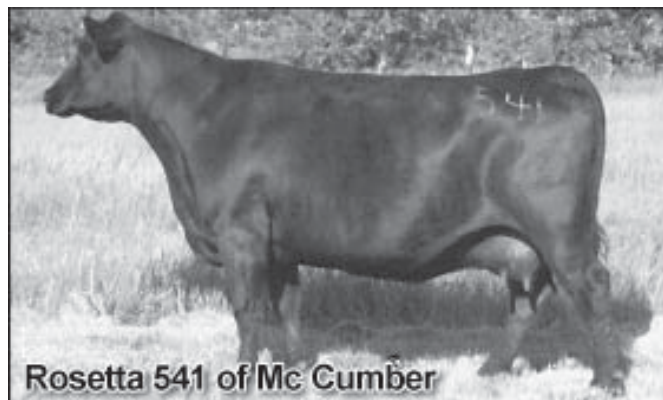
Individual Record	
BW	79
WW	572
205	648
WR	94
ADG	3.44
YW	1026
365	1198
YR	97

BT New Trend 172K
Rosetta 376 of Mc Cumber
Rosetta 849 of Mc Cumber

Ultrasound Data	
MF	3.34/88
REA	11.60/94
Fat	0.24/92

EPDs								Dam's Production			
BW	WW	Milk	YW	SC	IMF	REA	Fat	%RP	BW	WW	YW
2.9	34	25	64		-0.08	0.13	0.018		1/96	1/94	1/97

Lot 5182 - Recommended for use on heifers - A well - balanced, super correct, masculine son of Mc Cumber Tradition 383.



Rosetta 541 of Mc Cumber

Maternal Great Grand dam of 5182

5188 MC Cumber 1206 N Trend 5188

Calved: 03/15/2005

Reg. No. 15050871

AAR New Trend
MC Cumber New Trend 1206
Miss Wix 705 of Mc Cumber

V D A R Shoshone 548
Donna AAR 74
Mc Cumber 124 Traveler 212
Miss Wix 235 of Mc Cumber
V D A R Rito 953
Gale 607 of Mc Cumber
Mc Cumber 054 Rito 5009
Erianna 513 of Mc Cumber

Individual Record	
BW	96
WW	604
205	615
WR	91
ADG	3.06
YW	1008
365	1105
YR	88

Mc Cumber 953 Rito 420
Erianna 01 of Mc Cumber
Erianna 8106 of Mc Cumber

Ultrasound Data	
MF	3.98/102
REA	14.30/114
Fat	0.40/143

EPDs								Dam's Production			
BW	WW	Milk	YW	SC	IMF	REA	Fat	%RP	BW	WW	YW
2.9	15	24	27		0.01	0.44	0.014		4/97	4/99	4/95

Lot 5188 - A heavy muscled, moderate framed, son of Mc Cumber New Trend 1206. His dam is a tremendously easy fleshing, deep bodied daughter of the calving ease sire Mc Cumber 953 Rito 420.



Vermilion Dateline 7078

Maternal Grand sire of Lot 5196

5193 MC Cumber 050 FNDTN 5193

Calved: 03/20/2005

Reg. No. 15050873

Mc Cumber Foundation 701
 Mc Cumber 701 Foundation 050
 B Pride 488 of Mc Cumber
 Mc Cumber 6122 Equator 8113
 Gale 0158 of Mc Cumber
 Gale 6129 of Mc Cumber

Mc Cumber 124 Traveler 212
 Miss Wix 235 of Mc Cumber
 V D A R Rito 953
 B Pride 084 of Mc Cumber
 Mc Cumber Equator 6122
 Rosetta 421 of Mc Cumber
 Mc Cumber 054 Rito 326
 Gale 413 of Mc Cumber

Individual Record	
BW	88
WW	632
205	656
WR	97
ADG	3.27
YW	1064
365	1179
YR	94
Ultrasound Data	
MF	3.54/91
REA	13.60/109
Fat	0.30/107

EPDs								Dam's Production			
BW	WW	Milk	YW	SC	IMF	REA	Fat	%RP	BW	WW	YW
1.4	21	23	41		-0.05	0.17	0.004		3/95	3/94	1/94

Lot 5193 - Recommended for use on heifers - This is an excellent grandson of Mc Cumber Foundation 701. He is a well - balanced, muscular bull, who is very good on his feet and legs. His dam is a deep bodied, wide made cow with an excellent udder. She is a daughter of Mc Cumber 6122 Equator 8113, who is siring cows that are doing a super job for us, as well as other breeders around the country.

5192 MC Cumber 229 Traveler 5192

Calved: 03/20/2005

Reg. No. 15170620

Sitz Traveler 9929
 BT Traveler 228K
 BT Everelda Entense 57D
 BT New Trend 172K
 Blackcap 325 of Mc Cumber
 Blackcap 8133 of Mc Cumber

D H D Traveler 6807
 Sitz Everelda Entense 1137
 Leachman Right Time
 Sitz Everelda Entense 1905
 A A R New Trend
 BT Everelda Entense 57D
 Mc Cumber Powertrain HC 1025
 Blackcap 437 of Mc Cumber

Individual Record	
BW	77
WW	542
205	626
WR	91
ADG	2.82
YW	914
365	1077
YR	87
Ultrasound Data	
MF	3.94/104
REA	11.40/93
Fat	0.27/104

EPDs								Dam's Production			
BW	WW	Milk	YW	SC	IMF	REA	Fat	%RP	BW	WW	YW
1.0	28	32	48		0.08	-0.04	0.011		1/93	1/91	1/87

Lot 5192 - Recommended for use on heifers - A moderate framed, deep bodied, smooth shouldered bull, that **should be a sure thing on heifers**. His dam is a powerful daughter of BT New Trend 172K.



Gale 0158 of Mc Cumber

Dam of Lot 5193

5196 MC Cumber 228 Traveler 5196

Calved: 03/22/2005

Reg. No. 15170622

Sitz Traveler 9929
 BT Traveler 228K
 BT Everelda Entense 57D
 Vermilion Dateline 7078
 Miss Wix 3028 of Mc Cumber
 Miss Wix 702 of Mc Cumber

D H D Traveler 6807
 Sitz Everelda Entense 1137
 Leachman Right Time
 Sitz Everelda Entense 1905
 Connealy Dateline
 Vermilion Blackbird 5044
 Mc Cumber 124 Traveler 212
 Miss Wix 235 of Mc Cumber

Individual Record	
BW	75
WW	554
205	643
WR	94
ADG	3.08
YW	960
365	1136
YR	92
Ultrasound Data	
MF	3.60/95
REA	11.60/94
Fat	0.21/81

EPDs								Dam's Production			
BW	WW	Milk	YW	SC	IMF	REA	Fat	%RP	BW	WW	YW
1.5	31	30	57		0.01	0.04	0.004		1/90	1/94	1/92

Lot 5196 - Recommended for use on heifers - A phenotypic replica of his sire BT Traveler 228K. 5196 is moderate framed, deep bodied, and naturally thick. His dam is a tremendous daughter of VRD that is a deep bodied, broody female with a faultless udder. She is a daughter of Miss Wix 702 of Mc Cumber, who is the dam to many outstanding sons selling in this sale. A full sister to Miss Wix 3028 of Mc Cumber topped the North Star Classic sale in Valley City, and another full sister sold by private treaty to Ed and Lori Williams in MS, and will be entered in the National Junior Angus Show in Indianapolis IN, this summer as a cow/calf pair for their daughter.



Grandpa's 'lil helpers: Nate & Sydney



Mc Cumber 202 Classic 5203



Mc Cumber 24J RT Time 5209



Mc Cumber Classic 202



Miss Wix 5168 of Mc Cumber

Sire of Lot 5203

Maternal Grand dam of Lot 5203

5203 MC Cumber 202 Classic 5203

Calved: 03/29/2005

Reg. No. 15170628

Tehama Bando 155
 MC Cumber Classic 202
 Miss Wix 365 of Mc Cumber
 Vermilion Dateline 7078
 Miss Wix 2026 of Mc Cumber
 Miss Wix 5168 of Mc Cumber

Band 234 of Ideal 3163
 Tehama Blackcap G373
 Shoshone 247 P J M
 Miss Wix 294 of Mc Cumber
 Connealy Dateline
 Vermilion Blackbird 5044
 Rito 054 G D A R
 Miss Wix 756 of Mc Cumber

Individual Record	
BW	89
WW	618
205	706
WR	105
ADG	3.67
YW	1102
365	
YR	
Ultrasound Data	
RF	3.97/102
REA	12.20/98
Fat	0.32/114

EPDs								Dam's Production			
BW	WW	Milk	YW	SC	IMF	REA	Fat	%RP	BW	WW	YW
3.1	38	21	63		0.00	0.05	-0.008		2/96	2/95	1/79

Lot 5203 - Selling 2/3 interest and full possession - Recommended for use on larger framed heifers - This son of Mc Cumber Classic 202 has the herd bull look. **He is an extremely attractive bull that combines depth of rib, thickness, and soundness into an impressive package.** He weaned off with a 205 day weight of 706 lbs. to ratio 105, and gained 3.67 lbs/day to earn a 365 day weight of nearly 1300 lbs. His dam is a moderate framed, super uddered, easy fleshing daughter of VRD, and member of the Miss Wix cow family. **5203 is a very complete bull that has all the credentials of a top herd sire prospect.**

5209 MC Cumber 24J RT Time 5209

Calved: 04/4/2005

Reg. No. 15170634

Leachman Right Time
 BT Right Time 24J
 Sitz Everelda Entense 1905

N Bar Emulation EXT
 Leachman Erica 0025
 Traveler 124 G D A R
 Sitz Everelda Entense 1791
 Traveler 124 G D A R
 Miss Wix 365 of Mc Cumber
 Shoshone Viking GD60
 Miss Wix 117 of Mc Cumber

Individual Record	
BW	97
WW	620
205	683
WR	101
ADG	3.21
YW	1044
365	
YR	
Ultrasound Data	
RF	3.63
REA	11.60
Fat	0.29

Mc Cumber 124 Traveler 212
 Miss Wix 702 of Mc Cumber
 Miss Wix 235 of Mc Cumber

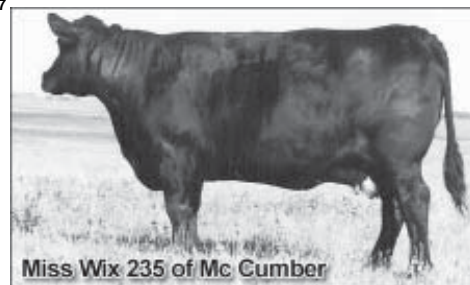
EPDs								Dam's Production			
BW	WW	Milk	YW	SC	IMF	REA	Fat	%RP	BW	WW	YW
3.5	35	24	62		0.14	0.09	0.023		5/103	5/107	2/109

Lot 5209 - Selling 2/3 interest and full possession - This may be the sleeper of the sale. He is a high volume, wide made bull with a big top, and powerful rump. 5209 is an April bull calf, and the natural calf out of Miss Wix 702 of Mc Cumber. She was flushed once and then settled AI that spring. **The cow power behind 5209 is nearly incomparable.** He combines the Miss Wix and Everelda Entense cow family. He stacks his dam, Miss Wix 702 of Mc Cumber, Miss Wix 235 of Mc Cumber, Miss Wix 117 of Mc Cumber, and Miss Wix 365 of Mc Cumber, with Sitz Everelda Entense 1905. His maternal heritage includes some of the best cows we have ever bred. **The fertility, stayability, and outstanding production** of these cows is second to none within the Angus breed.
 Miss Wix 702 - WWR 5/107, YWR 2/109 (donor)
 Miss Wix 235 - WWR 10/104, YWR 9/104 (donor)
 Miss Wix 117 - WWR 10/119, YWR 9/111 (pathfinder)
 Make sure to find this young herd bull prospect or you will be missing an outstanding bull!!!



Miss Wix 705 of Mc Cumber

Paternal Grand dam of Lot 5207



Miss Wix 235 of Mc Cumber

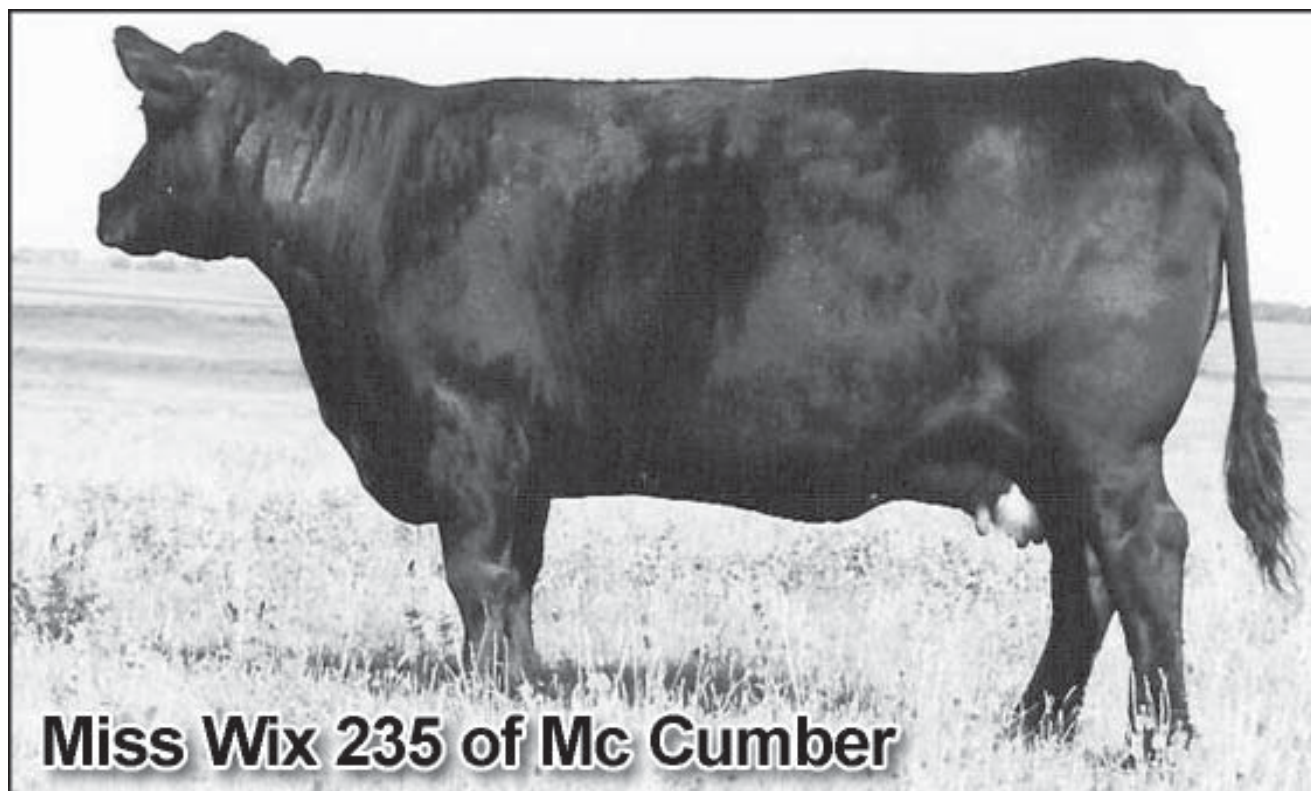
Paternal Great Grand dam of Lot 5207

**Unable to attend the sale?
 WE CAN HELP!**

**Mc Cumber Angus Ranch's
 Sight Unseen Purchase
 Program**

Contact us on Sale Day: **701.246-3366**
701.246.3234
701.246.3475

McCumber
 Angus
 Ranch



Miss Wix 235 of Mc Cumber

- Above: Paternal Great Grand dam of Lot 5216
- Below: Paternal Grand dam of Lot 5216

5213 MC Cumber 202 Classic 5213

Calved: 04/11/2005

Reg. No. 15170637

Tehama Bando 155
MC Cumber Classic 202
Miss Wix 365 of Mc Cumber

Band 234 of Ideal 3163
Tehama Blackcap G373
Shoshone 247 P J M
Miss Wix 294 of Mc Cumber
Mc Cumber 124 Traveler 212
Miss Wix 235 of Mc Cumber
Mc Cumber Rito 0054
Lassie 648 of Mc Cumber

Individual Record	
BW	95
WW	600
305	682
WR	101
ADG	3.26
YW	1030
365	
SR	

Ultrasound Data	
MF	4.03
REA	11.00
Fat	0.18

EPDs				Dam's Production						
BW	WW	Milk	YW	SC	IMF	REA	%RP	BW	WW	YW
2.5	28	21	43		-0.05	-0.11	-0.015	3/100	4/94	2/90

Lot 5213 - Recommended for use on larger framed heifers - A well made, naturally thick son of Mc Cumber Classic 202. His dam is a very easy fleshing, deep bodied, moderate framed daughter of Mc Cumber Foundation 701.



Miss Wix 705 of Mc Cumber

5216 MC Cumber 1206 N Trend 5216

Calved: 04/13/2005

Reg. No. 15170639

AA R New Trend
MC Cumber New Trend 1206
Miss Wix 705 of Mc Cumber

V D A R Shoshone 548
Donna AA R 74
Mc Cumber 124 Traveler 212
Miss Wix 235 of Mc Cumber
Rito 054 G D A R
Miss Wix 365 of Mc Cumber
Rito 2100 G D A R
East Fork Blue Ribbon 33

Individual Record	
BW	94
WW	556
305	637
WR	95
ADG	3.56
YW	1026
365	
SR	

Ultrasound Data	
MF	3.62
REA	13.40
Fat	0.17

EPDs				Dam's Production						
BW	WW	Milk	YW	SC	IMF	REA	%RP	BW	WW	YW
3.7	10	24	25		-0.04	0.04	-0.005	7/97	7/104	5/105

Lot 5216 - A heavy muscled, stout made bull out of a herd bull producing dam. 5216 is a wide tracking, well balanced, muscular son of Mc Cumber New Trend 1206. His pathfinder dam is a herd bull producer by Mc Cumber 054 Rito 326, with sons selling to Clay Creek Angus Ranch in WY, Dick, Grant, and Ross Nielsen in NE, and Mike and Bill Mongeon in ND. He is the result of 4 consecutive generations of pathfinder cows. With a little more age this bull would stand right next to the older bulls in the sale.

Notes

ANGUS SOURCE

tagging program
now available!

AngusSource enables producers to convey the valuable source, genetic and management information about their Angus-influenced commercial feeder calves and replacement heifers to prospective buyers.

Step 1 Enroll in AngusSource via www.angussource.com or with a printed enrollment form (available by calling American Angus Association office).

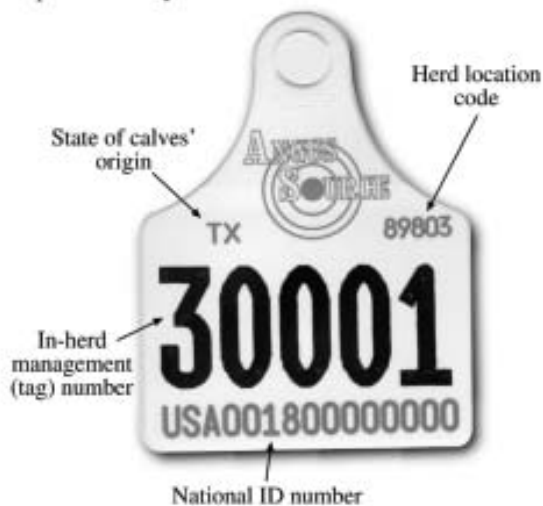
THIS INFORMATION MUST BE SUBMITTED PRIOR TO FIRST TAG ORDER.

Step 2 Enroll cattle and order tags via www.angussource.com or by calling AAA office. Allow 2 weeks for printing and delivery. Enrollment fee: \$1 per tag

Step 3 Tag calves. Tags should only be used for calves whose sire or maternal grandsire is a registered Angus bull. Calves should be at least 50% Angus and tagged prior to shipping from farm or ranch of origin.

Step 4 Enter marketing information about the health, management and sale date/location.

Step 5 Market cattle through an auction, video or direct by using the printed AngusSource Marketing Document to convey the valuable information to potential buyers.



For more information, contact the AAA Commercial Programs Department at 816-383-5100 or angussource@angus.org.

Angus Source Rebate Available from Mc Cumber Angus Ranch!

As a new program for our customers, Mc Cumber Angus Ranch is pleased to offer 30 free AngusSource tags/enrollments for each bull purchased from us in the past two years. These tags should be used for calves sired by Mc Cumber Angus Ranch bulls, and tags must be purchased and applied in 2005. The tags cost \$1.00 each, and Mc Cumber Angus Ranch will rebate this on each qualifying tag.

To participate in the AngusSource program, commercial customers must first complete the "Beef Improvement Records" enrollment form, available in printed form from the American Angus Association (AAA), or online at www.angussource.com. Tags may then be ordered in one of two ways...on www.angussource.com or by calling the AAA. Allow at least two weeks for tag orders to be processed and shipped to you.

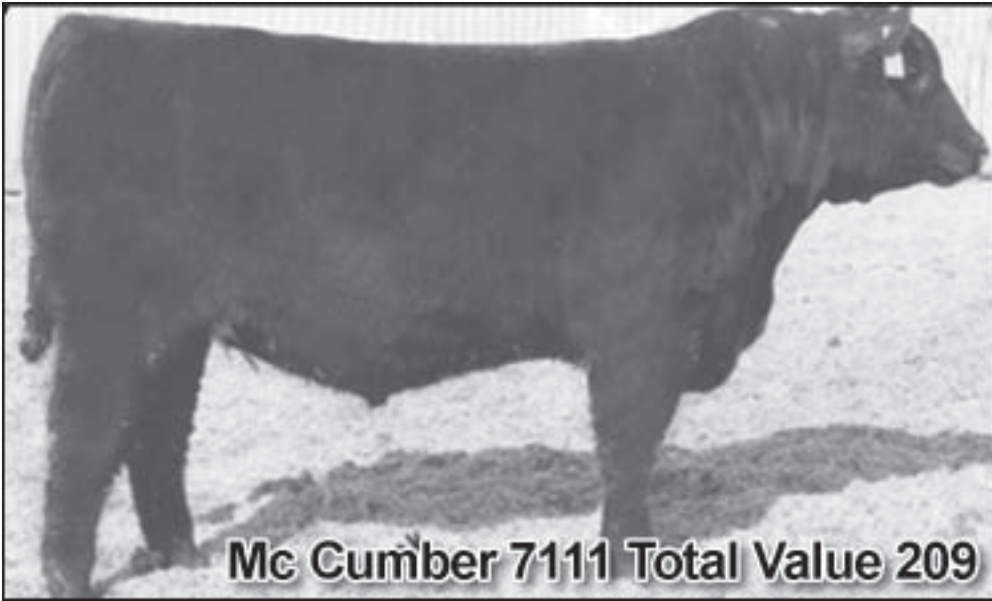
After tags have been ordered, FAX or mail a copy of the AAA receipt/invoice (you will receive this from the AAA a few days after your order is processed) to Mc Cumber Angus Ranch. If you are using bulls not purchased from Mc Cumber Angus Ranch, please indicate the total number of tags ordered for Mc Cumber Angus Ranch -sired calves only, and we will send you a check for these tags.

For more information on the AngusSource program, contact the AAA Commercial Programs department at 816-383-5100 or go to www.angussource.com. Thank you for your continued use of Mc Cumber Angus Ranch genetics!

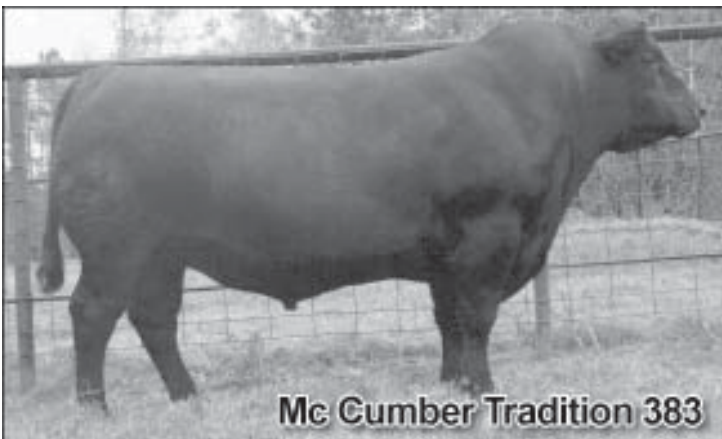


Sale Day Phones

701.246-3366 ◆ 701.246.3234 ◆ 701.246.3475



Herd bull prospects by
Mc Cumber
Total Value



**Herd bull prospects by
Mc Cumber Tradition 383**

Six sons sell



**Herd bull prospects by
SAV 8180 Traveler 004**

Six sons sell

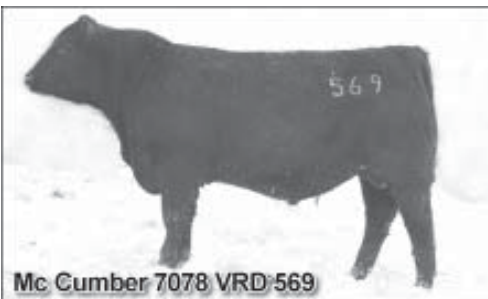




Herd bull
prospects by
**Leachman
Right Time**



Herd bull
prospects by
**Vermilion
Dateline
"VRD"**





RR 1 - Box 128
Rolette, North Dakota 58366



Annual Bull Sale
Friday, March 31, 2006
At the Ranch, West of Rolette, ND

Please Deliver by:
March 16, 2006

Address Service Requested

Featuring These excellent Sons and Many more!

