



Selling 106 Angus Bulls



March 31, 2008

1:00 P.M.

At the Ranch

1 Mile West of Rolette, North Dakota

McCumber *Angus* Ranch



The cow herd known for Outstanding maternal traits.

Chuck and Gail Tastad
Phone/fax 701/246-3366
Email: mccumber@utma.com
Web site:
www.mccumberangus.com



*Matt, Cynthia,
Sydney, Eva, Nate & Brett Tastad*
Phone/fax 701/246-3847
Web site:
www.mccumberangus.com

Dear Cattle Men and Women,

We would like to welcome you to our annual bull sale, and thank you for your continued support of our program. This is our 10th Bull sale and our 44th continuous year breeding predictable, profitable, commercial oriented seedstock. We hope to continue to be your seedstock source now and in the future.

This year's offering is the result of 44 years of breeding beef cattle that are bred and managed with you in mind. The bulls are uniform from top to bottom. There will be top bulls selling throughout the entire offering with bred in performance, outstanding carcass traits, and the ability to sire commercial oriented, very adaptable replacement females. The bulls are moderate framed, heavy muscled, deep bodied, and sound. They weaned off this fall very well considering the dry conditions, and were developed on a sensible ration to ensure their soundness and longevity. The bulls are designed to go out and work under any management or environmental situation, and are produced from a cowherd that is stacked with multiple generations of highly fertile, easy fleshing, moderate framed cows with the ability to raise big, bloomy calves year after year.

It seems the new buzzword in the industry is "efficiency", and rightly so. With costs always on the increase we need to get optimum performance out of these cattle with the least amount of inputs possible. Here at Mc Cumber we believe efficiency starts with the cowherd. This is why we continue to avoid fads, and extreme outliers, and continue to stack generations of outstanding females into our cattle. This efficient female is low maintenance, problem free, and has enough milk to raise a big, healthy calf while rebreeding quickly, and maintaining body condition without excess feed. As the industry moves to more efficient beef cattle, they will search out the animals that have the ability to perform with fewer inputs. This animal is one that has early growth, matures early, maintains condition on less, and has the ability to produce a high quality carcass with fewer days on feed. Don't get me wrong, pounds and performance matter. We still get paid for pounds. We just need to get the pounds more efficiently.

Again this year we took part in the Johnes Eradication program through the state of North Dakota, and once again all cows were negative.

For your convenience the sale will be broadcast by Superior Productions on RFD-TV. The cattle will be filmed prior to the sale and a DVD or VHS tape will be available for viewing. You can either contact us or Superior and we would be happy to send a copy to you. If you are at all interested in participating through Superior please make sure you pre-register in advance of the sale.

As always, ALL the performance, and ultrasound data has been included in the catalog, and if there is some other information you would like we would be happy to provide you with it. The bulls in the sale will have passed a breeding soundness exam and fertility test. They are guaranteed to be breeders and we stand behind them 100%. If you have any questions or problems, be sure to let us know. The bulls are available for viewing anytime prior to the sale, and we would be glad to show them to you.

If we can be of any assistance, please do not hesitate to call either Dad or me.

Matt and Chuck Tastad

Contact McCumber

Chuck & Gail Tastad.....701.246.3366

Matt, Cynthia,

Sydney, Eva, Nate & Brett Tastad701.246.3847

8675 37th Avenue Rolette, ND 58366

E-mail: mccumber@utma.com

Web site: www.mccumberangus.com

1 mile west and 1/4 mile south of Rolette, North Dakota

Sale Day Telephones

701.246.3366

701.871.9800

701.871.1072

Sale Personnel

Auctioneer:

Roger Jacobs.....406.698-7685
Box 270, Shepherd, MT 59079

Sale Consultants:

Jim O'Neill712.644.2062
Cell.....402.680.3171
Casey St. Blanc985.789.2110
Home985.796.0607

Special Representatives:

Very Frey, Angus Journal.....701.537.5383
Cell701.721.0344
Terry Robinson, Farm and Ranch Guide.....701.255.3037
Kirby Goettsch, Western Livestock Reporter605.380.3939
Scott Dirk, Tri-State Neighbor605/335-7300

*Buyers unable to attend the sale may send bids to
McCumber Angus Ranch, Sale Consultants or Representatives.*

Sale Terms & Conditions

All cattle sell under the standard terms and conditions of the American Angus Association. Terms of the sale are cash.

Volume Discounts:

We will discount your purchase price 3% on 3 head purchased by one buyer and up to 10% on 10 head purchased by one buyer.

Delivery:

We offer free delivery in North Dakota and adjoining states on all bulls and free delivery up to 1,000 miles on purchases totaling \$2,500. Beyond 1,000 miles delivery will be billed at cost.

Sight Unseen Purchase Program:

If you cannot attend the sale and would like to purchase bulls, please give us a call and we'll be glad to help you with your order. Describe the type of bull, minimum and maximum parameters and price range. We want to assure you that your bid will be handled with the utmost professionalism and your money handled like it is our own. We guarantee 100% satisfaction on all orders. If you get the bull and don't like him, we will take him back.

Affordability:

McCumber bulls are affordable. Here is a breakdown of the last three bull sales:

47% have sold for less than \$2,000

69% have sold for less than \$2,500

83% have sold for less than \$3000

Catalog designed by Strommen Livestock Services, Dickinson, ND - 701-483-7973

Lodging & Transportation

Rolette Motel, Rolette ND.....701.246.3733
Sky Dancer Hotel & Casino, Belcourt ND.....701.244.2400
Econo Lodge, Rugby ND.....701.776.5776
Hub Motel, Rugby ND.....701.776.5833
Multiple locations in Minot ND

Rolette ND has a 3,500 foot paved runway. Minot, ND is served by Northwest Airlines. Minot is 90 miles from the ranch.

Herd Health & Nutrition

Herd Health:

The McCumber herd is in excellent health, and all cattle sell with interstate health papers. Bulls have been vaccinated with Vista Once SQ, 7-way, Dectomax and have had a complete fertility test

Nutrition:

The bulls were fed a high roughage ration which for the second time included peas. The peas allowed us to decrease the level of starch in the diet. We reached a maximum of 45 mcal, and had the protein at 14%. The bulls performed superbly and were developed in a way to ensure their soundness and longevity. Once again the calves received a highly medicated creep while the cows were dry lotted, prior to going to pasture. This has helped with the control of pneumonia. Once the cattle are on grass, the cows and calves do not receive any supplemental feed, except for mineral and salt.

Marketing

If you have calves sired by our bulls, or females bred to our bulls, we would like to help you market them. We, along with the Spickler Ranch, sponsored the 2nd Annual Angus Partners commercial female sale in Mandan. The consignors realized a considerable premium over the current market for their McCumber and Spickler sired replacement open and bred females. We are planning to continue with this sale and would be happy to accept your consignment at any time. I would also suggest checking out the Angus Source program. This is a very effective way to set apart your Angus sired feeder cattle, and replacement females.

Semen Interest

You will notice that we are retaining an interest in quite a few of the bulls. These are bulls we may want to collect semen from in the future for use within our herd. If we are able to sell semen from your bull, we would share with you any revenue generated from the sale of semen. The bulls would be collected when it was convenient for you. The buyer has full possession and salvage value of the bull. Many of these bulls will undoubtedly sell in the price range of the commercial man.



Reference Sire:

A Sinclair Extra 4X13

Calved 02/07/2004 Reg. # 14774030

Emulation N Bar 5522
N Bar Emulation EXT
 N Bar Primrose 2424

N Bar Prime Time D806
N Bar Lady Ida S C C 2P37
 N Bar Lady Ida F1080

Emulation 31
 Ankony 8F78 Lass 8F275
 Emulation 31
 Primrose N Bar 9962

Gardens Prime Time
 N Bar Miss Emulous A404
 N Bar Shadow X4124
 N bar Lady Ida D1986

EPDs										Dam's Prod.		
BW	WW	YW	Milk	SC	IMF	REA	Fat	\$W	\$B	BW	WW	YW
-1.4	45	84	21	-.62	.53	.14	.046	30.34	42.06			

Reference Sire:

B McCumber Tradition 383

Calved 02/11/2003 Reg. # 14667477

N Bar Emulation EXT
Leachman Right Time
 Leachman Erica 0025

McCumber 124 Traveler 212
Lassie 7015 of McCumber
 Lassie 648 of McCumber

EMulation N Bar 5522
 N bar Primrose 2424
 Tehama Bando 155
 Leachman Erica 8058

Traveler 124 G D A R
 Miss Wix 365 of McCumber
 Rito 2100 G D A R
 Lassie 252 of McCumber

EPDs										Dam's Prod.		
BW	WW	YW	Milk	SC	IMF	REA	Fat	\$W	\$B	BW	WW	YW
5.4	31	69	20	.13	.04	.23	.045	12.05	20.96			

- He has exceeded our expectations
- Sure-fire heifer bull with excellent new born calf vigor
- He sires moderate framed, deep bodied cattle, with natural thickness, and exceptional length
- His first daughters in production are phenomenal, with superior udder quality, an easy disposition, and great mothering ability.
- He consistently adds IMF to his progeny, with above average REA.
- His first sons were very popular in last year's sale
- One of his first sons for Sinclair has already been leased by a major AI stud
- His popularity is growing rapidly, especially among commercial producers across the country
- Owned with Sinclair Cattle Co., N-Bar Land and Cattle, Lewis Hagen, and Genex Cooperative Inc.
- Semen available through Genex

- The outstanding son of Right Time that we chose to carry on the Right Time influence
- Sires moderate framed, heavy muscled progeny with excellent foot and leg structure
- His daughters in production are easy fleshing, perfect uddered, and productive
- A son sired the top selling open heifer calves in the 2008 Angus Partners commercial heifer sale.
- Sons continue to be very popular
- Owned with Heritage Angus Farm, Ed and Lori Williams and Family MS
- Semen available from McCumber or Heritage Angus



Reference Sire:

C LT Timberwolf 5014

Calved 02/18/2005 Reg. # 15147477

N Bar Emulation EXT
Wulffs Ext 6106
 Wulffs Erica Dianna C116

Sitz Value 7097
L T Ethelda 3245
 L T Ethelda 9012

Emulation N Bar 5522
 N Bar Primrose 2424
 Tehama Bando 155
 Wulffs Erica Dianna A308
 Sitz Traveler 6802
 Sitz Eisa Evergreen 791
 Marcys Powerstroke
 Marcys 94 Ethelda E 90

EPDs										Dam's Prod.		
BW	WW	YW	Milk	SC	IMF	REA	Fat	\$W	\$B	BW	WW	YW
1.3	51	92	23	.05	-.03	+.26	-.001	29.77	31.92			



- He is a powerful son of Wulff's EXT and out of an outstanding Sitz Value daughter.
- Timberwolf is a light to moderate birth weight sire, and many of his sons will be suitable for heifers
- He sires tremendous performance and his sons are super thick with extra width and dimension to their rear quarters
- His sons have excellent testicular development, and super foot structure, with well shape toes, and plenty of heal
- His first proof is real strong here at McCumber
- BWR 9/99, WW 9/107, YW 9/107, IMF 9/100, REA 9/105 (The 9 bulls selling)
- Owned with Lindskov-Thiel Ranch, TC Ranch, and Genex Cooperative Inc.
- Semen available through Genex

Reference Sire:

D Sitz JLS Emulation EXT 536P

Calved 08/16/2004 Reg. # 14809623

Emulation N Bar 5522
N Bar Emulation EXT
 N Bar Primrose 2424

D H D Traveler 6807
Ideal 4465 of 6807 4286
 E E 4286 of Ideal 2240 1254

Emulation 31
 Ankony 8F78 Lass 8F275
 Emulation 31
 Primrose N Bar 9962
 Q A S Traveler 23-4
 Bemindful Maid D H D 0807
 Ee 30 1254 of Ideal 5254 960
 Ee 30 2240 of Ideal 8245 960

EPDs										Dam's Prod.		
BW	WW	YW	Milk	SC	IMF	REA	Fat	\$W	\$B	BW	WW	YW
3.0	39	76	23	-.40	.11	.13	.018	22.83	30.01			



- 536P was our choice of the 2006 Sitz Spring Sale
- He is a moderate framed, easy fleshing, powerful son of EXT
- His dam is the 4465 cow from Jorgenson's in SD who is known for feed efficiency
- He is a brother to Sinclair Excellency 5X25, Sinclair Net Present Value, and Sinclair Rito Legacy 3R9 all leased to major AI bull studs
- His sons' are wide based, long bodied, deep ribbed, moderate framed, and naturally thick
- The daughters look tremendous to this point with outstanding volume and capacity, extra thickness, and early maturity
- Was extremely popular with a group from Argentina that visited the ranch this fall
- He has matured into an impressive beef bull
- Owned with Sitz Angus Ranch
- Semen available from McCumber

Reference Sire:

E SAV 8180 Traveler 004

Calved 01/01/2000 Reg. # 13512009

G D A R Traveler 71
Sitz Traveler 8180
 Sitz Everelda Entense 1137

A A R New Trend
Boyd Forever Lady 8003
 S V F Forever Lady 57D

Traveler 1148 G D A R
 G D A R Miss Blackcap 567
 G D A R Rainmaker 340
 Sitz Everelda Entense 2335
 V D A R Shoshone 548
 Donna A A R 74
 Leachman Right Time
 S V F Forever Lady 1128

EPDs										Dam's Prod.		
BW	WW	YW	Milk	SC	IMF	REA	Fat	\$W	\$B	BW	WW	YW
3.4	58	106	21	.99	-.14	.38	.013	32.10	34.59			



- We continue to be pleased with the job 004 is doing for us.
- His sons have topped our last 2 bull sales and his daughters continue to do an excellent job
- His sons have outstanding performance in the right package, and are naturally thick, and very deep bodied
- The daughters here at McCumber are moderate framed, easy fleshing, have outstanding udders and are very fertile
- He was the #1 sire for registrations in the breed for 2007

Reference Sire:

F **McCumber Total Value 551**

Calved 01/28/2005 Reg. # 15050907

Vermilion Dateline 7078

MC Cumber 7111 Total Value
Miss Wix 7111 of Mc Cumber

Sitz Traveler 9929

B Pride 9124 of Mc Cumber
B Pride 839 of Mc Cumber

Connealy Dateline
Vermilion Blackbird 5044
G D A R Traveler 71
Miss Wix 365 of Mc Cumber
D H D Traveler 6807
Sitz Everelda Entense 1137
P J M Power 291
B Pride 134 of Mc Cumber

EPDs										Dam's Prod.		
BW	WW	YW	Milk	SC	IMF	REA	Fat	\$W	\$B	BW	WW	YW
1.6	36	65	25	.01	.02	.22	.016	26.52	21.40			



- 551 is a moderate birth sire who consistently adds do-ability, natural thickness, and outstanding structure to his progeny
- He was a sale feature in our 2006 bull sale
- His dam is an outstanding pathfinder daughter of Sitz Traveler 9929
- Many of his sons will be suitable for heifers
- Owned with Lindskov Angus Ranch SD
- Semen available through McCumber

Reference Sire:

G **McCumber Total Value 449**

Calved 02/01/2004 Reg. # 14798068

Vermilion Dateline 7078

McCumber 7111 Total Value
Miss Wix 7111 of McCumber

McCumber 124 Traveler 212

Miss Wix 7007 of McCumber
Miss Wix 030 of McCumber

Connealy Dateline
Vermilion Blackbird 5044
G D A R Traveler 71
Miss Wix 365 of McCumber
Traveler 124 G D A R
Miss Wix 365 of McCumber
Rito 054 G D A R
Miss Wix 235 of McCumber

EPDs										Dam's Prod.		
BW	WW	YW	Milk	SC	IMF	REA	Fat	\$W	\$B	BW	WW	YW
-.1	31	61	26	+.62	0	.11	-.039	25.87	14.15			



- 449 has been used successfully on heifers
- He consistently sires moderate framed, super sound cattle with extra muscle shape to their top and rear quarter
- He sired the popular and 2nd top-selling bull in last year's bull sale to Current Creek Angus in MT
- His first daughters in production look excellent with outstanding udders, and their ability to maintain flesh while nursing a calf
- Owned with Diamond W Angus Ranch TX
- Semen available through McCumber

Reference Sire:

H **McCumber 004 Traveler 513**

Calved 01/18/2005 Reg. # 15050814

Sitz Traveler 8180

S A V 8180 Traveler 004
Boyd Forever Lady 8003

Leachman Right Time

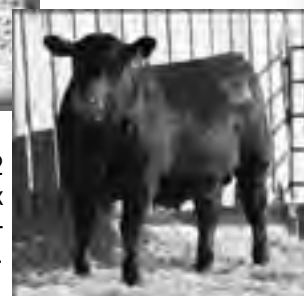
Miss Wix 301 of McCumber
Miss Wix 1119 of McCumber

G D A R Traveler 71
Sitz Everelda Entense 1137
A A R New Trend
S V F Forever Lady 57D
N Bar Emulation EXT
Leachman Erica 0025
McCumber Ferdinand 896
Miss Wix 8002 of McCumber

EPDs										Dam's Prod.		
BW	WW	YW	Milk	SC	IMF	REA	Fat	\$W	\$B	BW	WW	YW
1.7	47	90	20		-.12	+.53	.018	25.84	29.27			



- He was the high selling bull in our 2006 bull sale
- He is a short gestation, easy calving bull who we have successfully used on heifers
- His dam is an outstanding daughter of Right Time that descends from 5 consecutive generations of pathfinder cows
- His sons are moderate framed, deep bodied, and thick
- The females are real cowy and we expect them to make outstanding females
- Owned with Diamond W Angus Ranch TX
- Semen Available through McCumber



Lot 1 - McCumber 4X13 Extra 718

Lot:

1 McCumber 4X13 Extra 718

Calved	Reg. #	Ind. Record	
1/20/07	15813218	BW	82
		WW	814
		205	771
		WR	114
N Bar Emulation EXT	Emulation N Bar 5522	ADG	3.51
Sinclair Extra 4X13	N Bar Primrose 2424	YW	1302
N Bar Lady Ida SCC 2P37	N Bar Prime Time D806	365	1333
	N Bar Lady Ida F1080	YR	109
SAV 8180 Traveler 004	Sitz Traveler 8180	IMF	4.45/109
Miss Wix 409 of McCumber	Boyd Forever Lady 8003	REA	12/98
Miss Wix 2022 HC McCumber	Leachman Right Time	FAT	0.41/128
	Miss Wix 7111 of McCumber		

EPDs											Dam's Prod.		
BW	WW	YW	Milk	SC	IMF	REA	Fat	\$W	\$B	BW	WW	YW	
.2	51	1+89	24		1+.24	1+.20	1+.034	32.14	37.53	2/92	2/111	2/106	

Selling 1/2 interest and full possession- Recommended for use on heifers- This genetic gem by 4x13 is **one of the greatest herd bull prospects ever produced at McCumber**. 718 is a long bodied, smooth made bull. He combines natural thickness, tremendous depth and a flawless structure into one of the most phenotypic pleasing bulls we have ever produced. To go along with this, he had some of the top performance in his contemporary group. He only started at 82 lbs. for a birth ratio of 94 and weaned off his outstanding dam at 814 lbs with a 205 day weight of 771 lbs. to ratio 114, he also had a 365 day weight of 1333 lbs to ratio 109. **The cows behind him are some of the most elite females that have ever been on this ranch.** His dam is an outstanding daughter of SAV 8180 Traveler 004 that is moderate framed, easy fleshing and has an absolutely flawless udder, with small, well placed teats and tight well attached udder. She weaned off over 50% of her body weight without any pasture supplementation and is well on her way to Pathfinder status. She is extremely fertile settling AI every year while still being very productive. His Grand dam is

From Top Left: Grand Dam - Miss Wix 2022 of McCumber; Great Grand Dam - Miss Wix 7111 of McCumber, Great Great Grand Dam - Miss Wix 365 of McCumber; 3/4 View of Lot 1.

Lot 001 - Maternal Production Record

	BW	WW	YW	IMF	REA	Pathfinder
Miss Wix 409	2/92	2/111	2/106	2/102	2/105	
Miss Wix 2022	4/95	4/105	3/105	6/107	6/99	X
Miss Wix 7111	4/98	4/105	4/105	18/102	18/103	
Miss Wix 365	10/102	10/106	7/108	12/102	12/103	X
Miss Wix 294	12/107	12/113	12/109			X
Miss Wix 682	10/105	10/112	10/111			X

possibly the greatest female that has ever been produced at McCumber with two sons selling for an average of \$5250 to a couple of outstanding commercial producers. Miss Wix 2022 of McCumber has been proclaimed by astute cattlemen that have seen her as one of the most outstanding females they have ever seen. His great Grand dam is Miss Wix 7111 of McCumber, the female that replaced her legendary dam Miss Wix 365 of McCumber here at McCumber. The cows behind 718 are some of the most fertile and yet most productive females that we have ever produced.

In 4 of the 5 generations behind Miss Wix 409 of McCumber the cows have all qualified for Pathfinder status, except for Miss Wix 7111 who would have except the decision was made to hold her open and flush her.

718 not only excelled at the measurables with outstanding performance and excellent EPD's but we would expect him to excel at the basics the Angus breed is known for, fertility, do ability, calving ease, good feet and legs, outstanding udders and efficient, yet productive females, some of which have been over looked in the race for extremes.



Lot 2 - MC Cumber 004 Traveler 7150



Mc Cumber Total Value 504

Maternal brother,
McCumber Total Value 504.

Lot: **2** **McCumber 004 Traveler 7150**

Calved 2/16/07
Reg. # 15813192

Sitz Traveler 8180
SAV 8180 Traveler 004
Boyd Forever Lady 8003

Leachman Right Time
Lassie 206 of McCumber
Lassie 272 of McCumber

GDAR Traveler 71
Sitz Everelda Entense 1137
AAR New Trend
SVF Forever Lady 57D

N Bar Emulation EXT
Leachman Erica 0025
AAR New Trend
Lassie 252 of McCumber

Ind. Record	
BW	93
WW	732
205	705
WR	100
ADG	3.73
YW	1,250
365	1,302
YR	100
IMF	3.67/91
REA	13.3/107
FAT	0.31/100

Lot 2 - Maternal Production Record

	BW	WW	YW	IMF	REA	Pathfinder
Lassie 206	3/102	3/111	3/107			
Lassie 272	11/103	11/106	11/104			
Lassie 252	10/100	10/103	10/102			

the place, but was also extremely productive with a WW ratio of 3/111 and earning Pathfinder status. She settled first service AI every year and maintained a 365 day calving interval. Phenotypically, she was moderate framed, high volume and extremely thick. Along with this she had a wonderful udder and was very sound on her feet and legs. The maternal sisters to Lassie 206 have been the top selling cows in our last two female sales. Lassie 688 of McCumber sold for \$15,000 to a group of breeders in NE and Lassie 974 of McCumber sold for \$9000 to Haywood Farms in IA to be the top selling mature cow in our 2006 female sale. Lassie 206's only daughter in production has weaned 1 calf with a WW ratio of 110 and her two sons have sold for an average of \$5000 with one being a highlight of the 2006 sale selling to Ed and Lori Williams in MS for \$7000. 7150 is a big scrotaled, wide chested beef bull with the maternal heritage to be a positive addition to anyone's herd. We will be using him back in our herd to keep the influence of Lassie 206 of McCumber going.

EPDs										Dam's Prod.		
BW	WW	YW	Milk	SC	IMF	REA	Fat	\$W	\$B	BW	WW	YW
I+3.8	I+51	I+91	I+24	I+.78	I-.09	I+.48	I+.012	25.33	31.52	3/102	3/111	3/107

Selling 1/2 interest and full possession-This legitimate herd bull prospect is moderate framed, long, heavy muscled, deep bodied and excellent on his feet and legs. To go along with this he is an eye catcher when you walk into the pen and will certainly make a lot of friends on sale day. He weaned off his recipient dam at 732 lbs, gained 3.73 lbs/day and recorded a 365 day weight of 1302 lbs. He scanned a REA of 13.3 to ratio 107. His dam was injured in the winter of 2006 and we were forced to put her down. Fortunately we had flushed her in the spring of 2006 and got 4 pregnancies, 2 bulls and 2 heifers. These will be the last progeny ever produced by her. **Lassie 206 of McCumber was the absolute easiest fleshing cow on**



Lassie 206 of McCumber



Lassie 974 of McCumber



Lassie 688 of McCumber

From Left: Dam, Lassie 206 of McCumber and dam's maternal sisters: Lassie 974 of McCumber, Lassie 688 of McCumber.



Lot: **3 McCumber Timberwolf 780**

Calved 1/31/07 Reg. # 15813279

Wulffs Ext 6106
LT Timberwolf 5014
L T Ethelda 3245

N Bar Emulation EXT
Wulffs Erica Dianna C116
Sitz Value 7097
L T Ethelda 9012
Sitz Traveler 8180
Boyd Forever Lady 8003
Vermilion Dateline 7078
Bemind Maid 5120 McCumber

SAV 8180 Traveler 004
Bemindful Maid 509 McCumber
Bemindful Maid 356 McCumber

Ind. Record	
BW	74
WW	780
205	796
WR	118
ADG	3.58
YW	1,278
365	1,369
YR	112
IMF	4.79/117
REA	13.3/108
FAT	0.27/84

EPDs										Dam's Prod.		
BW	WW	YW	Milk	SC	IMF	REA	Fat	\$W	\$B	BW	WW	YW
1.1	58	+101	24		+1.10	+4.44	+0.009	32.84	41.68	1/90	1/118	1/112

Selling 2/3 interest and full possession- Recommended for use on heifers- An outstanding son of LT Timberwolf to start this impressive sire group of bulls. It won't take a statistician to find this **potential sale topper**. 780 has **curve-bender statistics** with a bw of only 74 lbs and a 205 day weight of nearly 800 lbs to ratio 118 as his dams first calf and earn his place among the top five bulls in his contemporary group for weaning. He also recorded a 365 day weight of 1369 lbs to ratio 112. His WW EPD of +58 ranks in the top 2% of the breed for non-parent bulls and his YW EPD of +101 ranks in the top 4%. Along with his tremendous performance he had an adjusted IMF of 4.79 to ratio 117 and an adjusted REA of 13.3 to ratio 108. 780 is a long fronted smooth shouldered bull with a big top and a thick, expressive rump. **His dam is a stunning daughter of 004 with a picture perfect udder.** She is deep bodied, easy fleshing and excellent on her feet and legs. Don't be fooled by his short ears, 780 is an **elite herd bull prospect**, with the ability to sire light birth, high performing offspring, without sacrificing carcass traits.

Lot: **4 McCumber 004 Traveler 7105**

Calved 2/4/07 Reg. # 15813154

Sitz Traveler 8180
SAV 8180 Traveler 004
Boyd Forever Lady 8003

BT Dolan 74D
FV Holly 1428
Fairview Holly 6120

GDAR Traveler 71
Sitz Everelda Entense 1137
AAR New Trend
SVF Forever Lady 57D
Leachman Right Time
Sitz Everelda Entense 1905
R A High Trend
Holly of Fairview 1149

Ind. Record	
BW	98
WW	872
205	811
WR	120
ADG	3.42
YW	1,348
365	1,358
YR	111
IMF	3.67/90
REA	13/106
FAT	0.34/106

EPDs										Dam's Prod.		
BW	WW	YW	Milk	SC	IMF	REA	Fat	\$W	\$B	BW	WW	YW
4.3	55	+89	22	+1.72	-1.13	+1.50	+0.020	26.99	28.37	5/96	5/105	5/102

Selling 2/3 interest and full possession- This **big, stout, beef bull** pushed the scale down at 872 lbs. at weaning for a 205 day weight of 811 lbs to ratio 120 and take his place as the top indexing bull of the calf crop. 7105 will definitely be a favorite on sale day. **He has an abundance of rib, is loaded with muscle and is extremely sound on his feet and legs.** His Pathfinder dam is a moderate framed, super uddered, high vol-umed daughter of BT Dolan who is a full brother to BT Right Time 24J. She is extremely fertile settling AI every year and has a BWR 5/96, WWR 5/105, YWR 5/102. One of her sons sold last year to Gurr Lake Angus Ranch in ND. Put a mark on 7105 you will want to look him up on sale day.





Lot:

5 **McCumber Timberwolf 7181**



Maternal brother,
McCumber 1147 RT Time 465

Calved 3/2/07
Reg. # 15813219

Wulffs Ext 6106
LT Timberwolf 5014
L T Ethelda 3245

N Bar Emulation EXT
Wulffs Erica Dianna C116
Sitz Value 7097
L T Ethelda 9012

Garrison 8128 Dynamite
Miss Wix 2027 of McCumber
Miss Wix 352 of McCumber

Finks 5522-6148
Miss Wix 204 of McCumber
KMA Highroller 5025
Miss Wix 098 of McCumber

Ind. Record	
BW	88
WW	774
205	780
WR	115
ADG	3.68
YW	1,285
365	1,369
YR	111
IMF	4.6/112
REA	13/106
FAT	0.38/119

EPDs										Dam's Prod.		
BW	WW	YW	Milk	SC	IMF	REA	Fat	\$W	\$B	BW	WW	YW
2.2	52	1+85	26		1+.04	1+.29	1+.016	31.65	32.04	4/99	4/110	4/107

Selling 2/3 interest and full possession- Recommended for use on heifers- This unique herd bull prospect has excelled at every measure. He earned a 205 day weight of 780 lbs to ratio 115, gained 3.68 lbs/day to ratio 107 and recorded a 365 day weight of 1369 lbs. to ratio 111. He didn't disappoint on the ultrasound either, he scanned an IMF of 4.60 to ratio 112 and a REA of 13.0 to ratio 106. 7181 is an extremely long bodied bull with excellent feet and leg structure and a rear quarter with extra dimension and width. His Pathfinder dam may be the best part about him. **Miss Wix 2027 of McCumber is sometimes overlooked by visitors because of her small stature, but what she is achieving is absolutely phenomenal.** Miss Wix 2027 is a 6th consecutive generation Pathfinder who has maintained her Pathfinder status while being flushed. She is extremely fertile settling AI first service every year, all the while being very productive. Miss Wix 2027 is very moderate framed, easy fleshing, good uddered and has outstanding feet with a perfectly shaped hoof and plenty of heal. 7181 weaned off 2027 at 53% of her body weight and her only other son McCumber 1147 RT Time 465 blew away his contemporaries at weaning and went on to be a \$6500 sale feature of our 2005 bull sale to Brad Gilbertson in ND. 465 has one

Lot 005 - Maternal Production Record						
	BW	WW	YW	IMF	REA	Pathfinder
Miss Wix 2027	4/99	4/110	4/107	4/114	4/109	X
Miss Wix 352	7/99	7/108	5/104	14/97	14/99	X
Miss Wix 098	6/106	6/106	5/106	7/94	7/103	X
Miss Wix 365	10/102	10/106	7/108	12/102	12/103	X
Miss Wix 294	12/107	12/113	12/109			X
Miss Wix 682	0/105	10/112	10/111			X

Shown below: Grand dam, Miss Wix 352 of McCumber and Great grand dam, Miss Wix 098 of McCumber



outstanding son in this sale and the other is being retained by us. We only had five calves by 465 but they indexed 100 at birth, 108 at weaning and the two bulls indexed 105 at a year. She has 2 daughters in production. One daughter weaned her first calf this year with a BWR of 84 and WWR of 109. Her other daughter just had her first calf this spring and is nursing an outstanding bull calf by Sinclair Extra 4x13. **7181 deserves your attention.** Not only has he jumped through every hoop, but his dam is on her way to becoming one of the greatest cows to ever walk our pastures. **His unique pedigree, performance and his ability to sire highly fertile, productive females make him one of the most intriguing bulls to sell this year. I don't think you'll find too many bulls in this breed backed by 6 consecutive generations of Pathfinder cows.**



Lot:

6 **McCumber 4X13 Extra 7125**

Calved 2/8/07 Reg. # 15813170

N Bar Emulation EXT
Sinclair Extra 4X13
 N Bar Lady Ida SCC 2P37

Emulation N Bar 5522
 N Bar Primrose 2424
 N Bar Prime Time D806
 N Bar Lady Ida F1080

BT Right Time 24J
Erianna 5105 of McCumber
 Erianna 2206 of McCumber

Leachman Right Time
 Sitz Everelda Entense 1905
 McCumber 6122 Equator 8113
 Erianna 880 of McCumber

Ind. Record	
BW	80
WW	718
205	754
WR	111
ADG	3.47
YW	1,200
365	1,309
YR	106
IMF	5.78/141
REA	11.6/94
FAT	0.47/147

EPDs										Dam's Prod.		
BW	WW	YW	Milk	SC	IMF	REA	Fat	\$W	\$B	BW	WW	YW
1	48	+86	25		+0.50	+0.12	+0.049	30.73	41.65	1/96	1/111	1/106



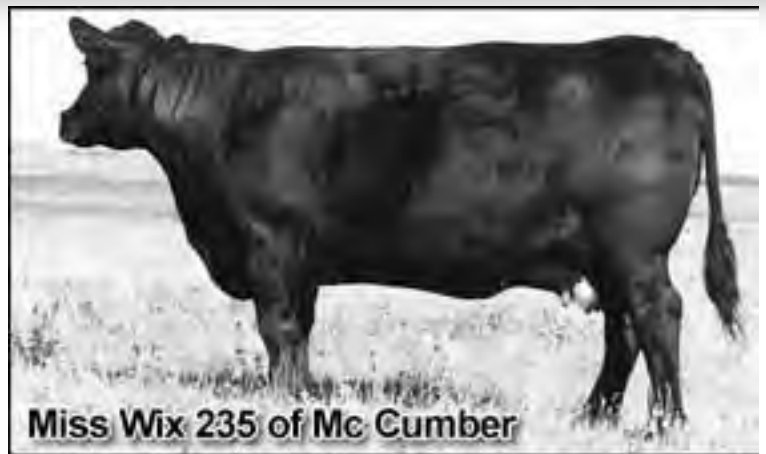
Maternal brother to dam.

Selling 1/2 interest and full possession- Recommended for use on heifers- This phenotypic replica of his sire has been one of our favorites from the start. This moderate framed, wide based, thick made son of 4x13 weaned off at 718 lbs. with a 205 day weight of 754 lbs. to ratio 111 as his dams first calf. He gained nearly 3.50 lbs/day and had a 365 day weight of 1309lbs. to ratio 106 all in a moderate framed, easy doing package. Along with this he had an IMF score of 5.78 to ratio 141, which generated an IMF EPD of +.50 which ranks in the top 5% of non-parent bulls in the breed. **7125 is not your typical high IMF bull. He is a big scrotomed, easy dispositioned bull with a ton of capacity and a masculine herd bull look.** His dam is a member of the Erianna cow family and a maternal sister to last years high selling bull at \$14,500 to Kemnitz Angus in SD. His grand dam is an outstanding Pathfinder daughter of McCumber 6122 Equator 8113 and has excellent ratios with a WWR 4/111,

YWR 4/114, IMF 3/117 and a REA 3/100. She was flushed last spring and has settled AI first service every year including after being flushed and is nursing a wonderful heifer calf by Leachman Right Time 2700. **This top-notch herd bull prospect has the ability to be a changer.** We call him Prototype, because we believe that this is the type of animal the beef industry will be demanding. **Prototype has calving ease, early explosive growth, a moderate frame and the ability to make high quality carcasses on fewer days on feed. The females should be moderate, good doing females, that reach maturity early with a reduced mature size.** Profit = Income-Expense, we can't forget about the expense side of the equation.



Full brother to grand dam, McCumber Foundation 701.



Maternal Great grand dam of Lot 7

Lot: **7 McCumber Timberwolf 7124**

Calved	Reg. #	Ind. Record	
2/8/07	15813169	BW	83
		WW	782
		205	753
		WR	111
		ADG	4
		YW	1,338
		365	1,393
		YR	113
		IMF	3.47/85
		REA	13.1/107
		FAT	0.3/94

Wulffs Ext 6106	N Bar Emulation EXT
LT Timberwolf 5014	Wulffs Erica Dianna C116
L T Ethelda 3245	Sitz Value 7097
	L T Ethelda 9012
Vermilion Dateline 7078	Connealy Dateline
Miss Wix 3028 of McCumber	Vermilion Blackbird 5044
Miss Wix 702 of McCumber	McCumber 124 Traveler 212
	Miss Wix 235 of McCumber

EPDs										Dam's Prod.		
BW	WW	YW	Milk	SC	IMF	REA	Fat	\$W	\$B	BW	WW	YW
2.2	51	I+94	24		I-.11	I+.29	I+.008	27.97	29.78	3/99	3/104	3/105

Selling 2/3 interest and full possession-This moderate birth, big time performance son of LT Timberwolf is long bodied, deep from fore rib to flank and has a big top and thick rump. He performed at the top of the contemporary group at all levels starting at only 83 lbs. to ratio 93 and grew like mad to wean off at 782 lbs. with a 205 day weight of 754 lbs. to ratio 111. He gained 4lbs/day and weighed off test at 1338 lbs with a 365 day weight of nearly 1400 lbs. to ratio 113. He nearly qualifies as a heifer bull candidate, but with a little higher birth weight coming from the bottom side of the pedigree he should probably be tried out on cows the first year. His dam is one of the top VRD daughters on the ranch. She is big middled, feminine fronted and has an excellent udder. Her dam, Miss Wix 702 of McCumber is the highly productive full sister to McCumber Foundation 701. 7124 is another bull with many outstanding cows behind him.

Lot 007 - Maternal Production Record						
	BW	WW	YW	IMF	REA	Pathfinder
Miss Wix 3028		3/104	3/105			
Miss Wix 702		5/107	2/109			
	Miss Wix 702 is a full sister to McCumber Foundation 701					
Miss Wix 235		10/104	9/104			
	Miss Wix 235 is the dam of McCumber Foundation 701					
Miss Wix 117		10/119	9/111			X

ANGUS PARTNERS

commercial heifer sale

Sponsored by Mc Cumber Angus Ranch and Spickler Ranch

A sale for commercial heifer calves and bred heifers that are sired by or bred to Mc Cumber Angus Ranch or Spickler Ranch bulls.

Last year's sale, held in January, was successful in returning a considerable premium to the consignors of the outstanding females offered.

Contact us if you are interested in consigning to next year's sale.

McCumber
Angus Ranch

Chuck & Gail Tostol (701) 246-3366
Matt & Cynthia Tostol (701) 246-3847
Web site: mccumberangus.com

SPICKLER RANCH

Justin & Sarah Spickler (701) 674-3170
Nathan & Emily Spickler (701) 674-3169
www.spickler ranch.com



Lot: **8** **McCumber 4X13 Extra 7159**

Calved 2/19/07
Reg. # 15813200

N Bar Emulation EXT Emulation N Bar 5522
Sinclair Extra 4X13 N Bar Primrose 2424
 N Bar Lady Ida SCC 2P37 N Bar Prime Time D806
 N Bar Lady Ida F1080
 Leachman Right Time N Bar Emulation EXT
Miss Wix 2022 HC McCumber Leachman Erica 0025
 Miss Wix 7111 of McCumber GDAR Traveler 71
 Miss Wix 365 of McCumber

Ind. Record	
BW	82
WW	704
205	684
WR	100
ADG	3.61
YW	1,206
365	1,262
YR	100
IMF	4.49/112
REA	12.9/104
FAT	0.28/90

EPDs										Dam's Prod.		
BW	WW	YW	Milk	SC	IMF	REA	Fat	\$W	\$B	BW	WW	YW
I-.1	I+42	I+75	I+25	I+0	I+.30	I+.26	I+.024	30.34	36.34	4/95	4/105	3/105

Selling 1/2 interest and full possession- Recommended for use on heifers-Another outstanding herd bull prospect by Sinclair Extra 4X13. 4x13 has done every thing we hoped he would do and more. **7159 is a moderate framed, heavy muscled bull, with a load of capacity, a thick, meaty rump and a gentle disposition.** Not only is 7159 appealing phenotypically, but he performed extremely well at every measure. He weaned off his recipient dam at 704 lbs. gained 3.61 lbs/day and earned a 365 day weight of 1262 lbs. His ultrasound stats are equally impressive with an IMF of 4.49 to ratio 112 and a REA of 12.9 to ratio 104 in a high powered group of embryo transplant bull calves. **His dam is the outstanding Pathfinder and donor Miss Wix 2022 of McCumber. She is a high volumed, easy fleshing, good footed daughter of Leachman Right Time 2700 who is often the favorite cow on the ranch for those who see her. Her udder is nearly perfect with small well placed teats, it is level from fore to rear and attached tight without excess hair, or false teats.** Her only daughter in production has recorded two calves on AHIR with a weaning ratio of 111 and is the dam of the herd sire prospect selling as Lot 1 in this sale. Her two sons have sold for an average of \$5250 to two of the top commercial operations around. Her only two full sisters have topped our last two cow sales at



From above left: Dam, Miss Wix 2022 of McCumber; Grand dam, Miss Wix 7111 of McCumber; Great grand dam, Miss Wix 365 of McCumber.

At left: maternal sister to dam - Miss Wix 2021 of McCumber.



Lot 008 - Maternal Production Record

	BW	WW	YW	IMF	REA	Pathfinder
Miss Wix 2022	4/95	4/105	3/105	6/107	6/99	X
Miss Wix 7111	4/98	4/105	4/105	18/102	18/103	
Miss Wix 365	10/102	10/106	7/108	12/102	12/103	X
Miss Wix 294	12/107	12/113	12/109			X
Miss Wix 682	10/105	10/112	10/111			X

\$15,000 and \$12,000 to Fortune's Rafter U Cross Ranch in SD and TL Ranch in MO. Another maternal sister to Miss Wix 2022 is the dam of the outstanding herd sire prospect selling as Lot 16 through this sale who had the top IMF and REA scans of the group. Volumes could be written about the progeny sales of the cows behind her who include Miss Wix 7111 of McCumber and Miss Wix 365 of McCumber. **Not only have their progeny commanded top dollar, but more importantly the fertility, productivity and longevity of these females has been passed on through generations. This genuine herd bull prospect is the result of a disciplined breeding program with a focus on fertility, maternal efficiency and traits that add to the bottom line of our customers.**



Above: Dam of Lot 10

Below: Maternal Brother of Lot 10



Lot:

9 McCumber 383 Tradition 702

Calved	Reg. #	Ind. Record	
1/13/07	15813140	BW	87
		WW	824
		205	806
		WR	119
		ADG	3.45
		YW	1,304
		365	1,358
		YR	110
		IMF	3.53/86
		REA	11.6/94
		FAT	0.25/78

Leachman Right Time	N Bar Emulation EXT
McCumber Tradition 383	Leachman Erica 0025
Lassie 7015 of McCumber	McCumber 124 Traveler 212
	Lassie 648 of McCumber
BT New Trend 172K	AAR New Trend
Rosetta 350 HC of McCumber	BT Everelda Entense 57D
Rosetta 9184 of McCumber	Circle Oak Lucys Boy 625
	Rosetta 777 HC of McCumber

EPDs										Dam's Prod.		
BW	WW	YW	Milk	SC	IMF	REA	Fat	\$W	\$B	BW	WW	YW
I+4.0	I+30	I+66	I+25		I+.01	I+.03	I+.014	16.72	19.94	1/111	1/101	1/105

The first son of Tradition and what a stout made, deep bodied, thick bull he is. 702 was a twin with a heifer, but weaned off his dam at 824lbs. with a 205 day weight of 806 lbs to ratio 119 and earn the second top indexing calf of his contemporary group. Along with this he weighed off test at 1304 lbs. with a 365 day weight of 1358 to ratio 110. His dam is a good milking, super fertile, moderate framed, feminine fronted daughter of BT New Trend 172K. Since her first calf she has settled AI every year and has raised two sets of twins. A full brother sold to Darrel Walters in ND. The McCumber Tradition 383 daughters have been exceptional to this point. They have near perfect udders, are easy fleshing and have excellent feet. We continue to use him to produce top-notch females and moderate framed, good performing sons. His sons have been very well received in the past and would expect that to continue.



Lot:

10 McCumber 004 Traveler 7007

Calved	Reg. #	Ind. Record	
2/26/07	15813132	BW	94
		WW	726
		205	722
		WR	100
		ADG	3.53
		YW	1,216
		365	1,287
		YR	100
		IMF	3.97/99
		REA	13.1/106
		FAT	0.28/90

Sitz Traveler 8180	GDAR Traveler 71
SAV 8180 Traveler 004	Sitz Everelda Entense 1137
Boyd Forever Lady 8003	AAR New Trend
	SVF Forever Lady 57D
Sitz Traveler 9929	DHD Traveler 6807
B Pride 9124 of McCumber	Sitz Everelda Entense 1137
B Pride 839 of McCumber	PJM Power 291
	B Pride 134 of McCumber

EPDs										Dam's Prod.		
BW	WW	YW	Milk	SC	IMF	REA	Fat	\$W	\$B	BW	WW	YW
I+3.8	I+44	I+80	I+22	I+.39	I-.04	I+.32	I+.005	22.75	28.99	7/101	7/106	5/104

Selling 2/3 interest and full possession- An outstanding ET son of B Pride 9124 of McCumber and Traveler 004. 7007 is moderate framed, heavy muscled, deep bodied and puts a foot down in all four corners. **We think he is one of the top 004 sons we have ever produced.** He weaned off his recipient dam at 726lbs, gained 3.53 lbs/day and recorded a 365 day weight of 1287 lbs. His dam is the mother to the herd sire McCumber Total Value 551 who sold through our 2006 sale to Lindskov Angus Ranch in SD for \$7000 and sired an outstanding set of beef bulls selling through this sale. **His dam is the epitome of an outstanding beef cow.** She is tremendously fertile, deep bodied, easy fleshing, good uddered and has absolutely outstanding feet. She has maintained her Pathfinder status while being flushed here at McCumber and settling AI every year. B Pride 9124 is extremely productive with a WWR of 7/106 and a YWR of 5/104. She went on to sell to Fortune's Rafter U Cross Ranch in SD through our 2006 cow sale and has entered their Embryo Transplant program. His flush sisters are near the top of the replacement pen and appear to be developing into excellent brood cow prospects.



Lot 11 - MC Cumber 004 Traveler-7137



Dam of Lot 11: B Pride 463 of McCumber

Lot: **11 McCumber 004 Traveler 7137**

Calved	Reg. #	Ind. Record	
2/10/07	15813181	BW	89
		WW	742
		205	744
		WR	110
		ADG	3.7
		YW	1,256
		365	1,336
		YR	109
		IMF	4.68/114
		REA	12.5/102
		FAT	0.33/103

Sitz Traveler 8180	GDAR Traveler 71
SAV 8180 Traveler 004	Sitz Everelda Entense 1137
Boyd Forever Lady 8003	AAR New Trend
	SVF Forever Lady 57D
Pine Creek Right Time 1147	Leachman Right Time
B Pride 463 of McCumber	Sitz Everelda Entense 1137
B Pride 273 of McCumber	BT Traveler 228K
	B Pride 690 of McCumber

EPDs										Dam's Prod.		
BW	WW	YW	Milk	SC	IMF	REA	Fat	\$W	\$B	BW	WW	YW
3.7	52	+94	25		+0.07	+0.29	+0.020	25.41	36.02	2/102	2/116	2/112

Selling 2/3 interest and full possession- Another high-powered herd bull prospect by 004, with tremendous performance. 7137 is a well made, high volumed, big scrotaled bull with natural thickness and excellent stats across the board. He weaned off his highly productive dam with a 205 day weight of 744 lbs. to ratio 110 gained 3.70 lbs a day and earned a 365 day weight of 1336 lbs. to ratio 109. His ultrasound did not disappoint with an IMF score of 4.68 to ratio 114 and a REA ratio of 102. His young dam is off to an excellent start with a WWR of 2/116 and an YWR of 2/112. Her progeny have also scanned extremely well with an IMF of 2/120 and REA of 2/100. **Phenotypically, she is as nice a looking cow on the ranch.** B Pride 463 is moderate framed, easy fleshing and has an absolutely superb udder, with small well placed teats and superior fore and rear udder attachment. You will certainly find this top herd bull prospect without any trouble on sale day.



Lot 12 - MC Cumber Ext 7005

Dam of Lot 12: Miss Wix 5007 of McCumber
Grand Dam of Lot 12: Miss Wix 365 of McCumber



Lot: **12 McCumber Ext 7005**

Calved	Reg. #	Ind. Record	
2/18/07	15815387	BW	94
		WW	786
		205	761
		WR	100
		ADG	2.75
		YW	1,168
		365	1,201
		YR	100
		IMF	3.65/91
		REA	13.7/110
		FAT	0.31/100

Emulation N Bar 5522	Emulation 31
N Bar Emulation EXT	Ankony 8F78 Lass 8F275
N Bar Primrose 2424	Emulation 31
	Primrose N Bar 9962
Rito 054 GDAR	CSU Rito 4114
Miss Wix 5007 of McCumber	Blackcap Forever 485 GDAR
Miss Wix 365 of McCumber	Shoshone 247 PJM
	Miss Wix 294 of McCumber

EPDs										Dam's Prod.		
BW	WW	YW	Milk	SC	IMF	REA	Fat	\$W	\$B	BW	WW	YW
+1.9	+29	+59	+19	+1.7	+0.02	+0.45	+0.023	20.1	18.92	4/98	4/101	4/102

Selling 2/3 interest and full possession- Recommended for use on heifers- One of the top EXT sons ever produced on this ranch. 7005 is a moderate framed, deep bodied, big scrotaled herd sire prospect with as much muscle shape and expression as you will find in an EXT. He weaned off his recipient dam at nearly 800 lbs. and had a 365 day weight of over 1200 lbs. He had an adjusted REA of 13.7 to ratio 110 and has a REA/CWT of nearly 1.20. His dam, Miss Wix 5007 of McCumber is the Rito 054 daughter that was retained and flushed here at McCumber. **Her full and maternal sisters went on to other programs and rose to the top in many elite Angus herds across the country.** This will be last set of calves by 5007 and I think they may be the best yet. Two of his flush brothers sold through last year's sale to Dave Mc Conville in NE and Drake Clark in KS. **7005 combines the best of EXT and the Miss Wix cow family. Not only does he have the bred in ability to sire outstanding females, but he has the extra shape and dimension to sire top male offspring as well.**

Lot 012 - Maternal Production Record						
	BW	WW	YW	IMF	REA	Pathfinder
Miss Wix 5007	4/98	4/101	4/102	56/96	56/103	
Miss Wix 365	10/102	10/106	7/108	12/102	12/103	X
Miss Wix 294	12/107	12/113	12/109			X
Miss Wix 682	10/105	10/112	10/111			X



Maternal brother to dam
of Lot 14:
McCumber 2700 RT
Time 517

Lot: **13** **McCumber 383 Tradition 7004**

Calved	Reg. #	Ind. Record	
2/16/07	15813130	BW	96
		WW	780
		205	751
		WR	100
		ADG	2.66
		YW	1,150
		365	1,177
		YR	100
		IMF	3.46/86
		REA	13.5/109
		FAT	0.27/87

Leachman Right Time	N Bar Emulation EXT
McCumber Tradition 383	Leachman Erica 0025
Lassie 7015 of McCumber	McCumber 124 Traveler 212
	Lassie 648 of McCumber
	CSU Rito 4114
Rito 054 GDAR	Blackcap Forever 485 GDAR
Miss Wix 5007 of McCumber	Shoshone 247 PJM
Miss Wix 365 of McCumber	Miss Wix 294 of McCumber

EPDs											Dam's Prod.		
BW	WW	YW	Milk	SC	IMF	REA	Fat	\$W	\$B		BW	WW	YW
1+3.7	1+23	1+54	1+20	1+.41	1-.07	1+.41	1+.020	13.99	11.23		4/98	4/101	4/102

Selling 2/3 interest and full possession- A super stylish, heavy muscled son of McCumber Tradition 383. 7004 is stout made, with extra shape and dimension to his hip and stifle. He weaned off his recipient dam at 780 lbs. and scanned a large REA of 13.5 to ratio 109 amongst a powerful set of ET bull calves. His dam is also Miss Wix 5007 of McCumber, who is the donor dam to the excellent flush of EXT bulls and consistently adds more REA to her progeny than any cow we have had. His dam and the cow family she descends from has been one of the most influential cow families in the Angus breed. 7004 is one of the top McCumber Tradition 383 sons to date. Look him up on sale day.

Lot: **14** **McCumber Timberwolf 7168**

Calved	Reg. #	Ind. Record	
2/23/07	15813208	BW	108
		WW	728
		205	717
		WR	106
		ADG	4.29
		YW	1,324
		365	1,403
		YR	114
		IMF	2.64/65
		REA	13.9/113
		FAT	0.32/100

Wulffs Ext 6106	N Bar Emulation EXT
LT Timberwolf 5014	Wulffs Erica Dianna C116
LT Ethelda 3245	Sitz Value 7097
	LT Ethelda 9012
	Leachman Right Time
Pine Creek Right Time 1147	Sitz Everelda Entense 1137
B Pride 275 of McCumber	McCumber Foundation 701
B Pride 0103 of McCumber	B Pride 786 of McCumber

EPDs											Dam's Prod.		
BW	WW	YW	Milk	SC	IMF	REA	Fat	\$W	\$B		BW	WW	YW
5.1	48	1+93	22		1-.21	1+.28	1+.023	19.21	22.4		4/107	4/97	2/103

7168 is a big, stout, high performing son of LT Timberwolf, who will have a lot of friends on sale day. **He has a little more birth weight, but put him on your mature cows and he will sire heavy, thick, shapely steer calves that will command top dollar at sale time.** He weaned off his powerful dam with a 205 day weight of 717 lbs. to ratio 106 and was the high gaining bull on test at 4.29 lbs/day to ratio 124 on a diet that maxed out at only 45 MCAL. He broke the 1400 lb barrier at a year earning a 365 day weight of 1403 lbs to ratio 114, which earned him the top spot for yearling weight. To go along with his top of the class performance he scanned nearly a 14 square inch REA to ratio 113. His dam is a powerful daughter of Pine Creek Right Time 1147. The Pine Creek Right Time daughters have been superb and B Pride 275 of McCumber is one of the best. She is a big barreled, easy fleshing cow with a flawless udder and excellent feet and legs. We have retained one daughter and her other daughter was sold to the Crider Ranch in ND.



Lot: **15 McCumber 004 Traveler 791**

Calved 2/3/07 Reg. # 15813287

Ind. Record	
BW	92
WW	724
205	672
WR	99
ADG	4.17
YW	1,304
365	1,339
YR	109
IMF	3.37/82
REA	13.2/107
FAT	0.45/141

Sitz Traveler 8180
SAV 8180 Traveler 004
 Boyd Forever Lady 8003

GDAR Traveler 71
 Sitz Everelda Entense 1137
 AAR New Trend
 SVF Forever Lady 57D

McCumber Foundation 701
Rosetta 1126 of McCumber
 Rosetta 5002 of McCumber

McCumber 124 Traveler 212
 Miss Wix 235 of McCumber
 Tehama Bando 155
 Rosetta 214 of McCumber

EPDs										Dam's Prod.		
BW	WW	YW	Milk	SC	IMF	REA	Fat	\$W	\$B	BW	WW	YW
3.1	42	I+83	21	I+.69	I-.12	I+.32	I+.029	21.67	24.63	5/104	5/102	5/105

Selling 2/3 interest and full possession- A super complete herd bull prospect by 004 and out of an outstanding McCumber Foundation 701 daughter. 791 is a moderate framed, deep bodied, good doing, heavy muscled bull that tracks wide and moves easy as he travels. He was one of the top gaining bulls on test with an ADG of 4.17 lbs/day. He weighed off test at over 1300 lbs. and earned a 365 day weight of 1336 lbs. to ratio 109. Along with this he scanned a REA of 13.4 to ratio 107 and puts all this performance in an ultra complete package. **His outstanding dam is what I would call a legitimate beef cow.** She goes about her business year in and year out by **calving early, rebreeding on time, bringing in a big bloomy calf and all the while maintaining excellent body condition.** Rosetta 1126 of McCumber is moderate framed, stout made and has an excellent udder. She stands down on a big, well shaped hoof and is a low maintenance, problem free beef cow. **This is one of the top bulls in the sale.**



Above Left: Maternal Brother - McCumber 3108 VRD 6168



Above Right: Maternal Grand Dam - Rosetta 5002 of McCumber)

Watch the Sale Live - In Person, Online or On Television!

You Can Participate as an Absentee Buyer!
 We prefer for each of you to be in attendance on sale day. Realistically, we know there will be some scheduling conflicts and distance limitations. In these cases, we have arranged for you to be able to participate in the sale on an absentee basis. If possible, you can come by and evaluate the animals prior to sale day. If distance is a problem, we can also provide you with a DVD of all the cattle for home viewing. All of the lots in the sale will be available for viewing online prior to sale day at www.superiorlivestock.com as well.

Customers tell us that the video does a good job of showing conformation, structural correctness, and how the cattle travel, etc. Our sale book, with complete data on each animal, is very helpful. Please feel free to call us with questions. In addition, there will be qualified persons on hand sale day to evaluate the bulls and answer any questions you might have.

Here's How It Works!
 Please call Superior Productions at 800-431-4452 and pre-register for your buyer's number. At that time they will give you the bid line number that you will use on sale day to place bids over the phone.

The sale will be broadcast via satellite on RFD-TV - Dish Network channel 9409 and DirecTV channel 379. Also, Superior Productions now offers the convenience of participating on sale day by following the auction on the internet at www.superiorlivestock.com. Regardless of internet connection, you will be able to view the same video feed as seen on the satellite.



The bidding process is the same - follow the auction on the internet and call the bid line number to place your bids. Bidders who are successful in making purchases via satellite or internet will be contacted by McCumber Angus Ranch after the sale to settle payment and shipping arrangements.



Miss Wix 2111 of McCumber



Miss Wix 2022 of McCumber

Above: Grand dam - Miss Wix 7111 of McCumber
Maternal sister to dam - Miss Wix 2022 of McCumber



Lot 16 - McCumber 4X13 Extra 751 *St. 9/20/10*

Lot: **16 McCumber 4X13 Extra 751**

		Ind. Record	
Calved	Reg. #	BW	66
1/27/07	15813263	WW	688
N Bar Emulation EXT	Emulation N Bar 5522	205	705
Sinclair Extra 4X13	N Bar Primrose 2424	WR	104
N Bar Lady Ida SCC 2P37	N Bar Prime Time D806	ADG	3.22
	N Bar Lady Ida F1080	YW	1,136
BT Right Time 24J	Leachman Right Time	365	1,220
Miss Wix 5139 of McCumber	Sitz Everelda Entense 1905	YR	99
Miss Wix 7111 of McCumber	GDAR Traveler 71	IMF	6/147
	Miss Wix 365 of McCumber	REA	14.7/120
		FAT	0.39/122

EPDs										Dam's Prod.		
BW	WW	YW	Milk	SC	IMF	REA	Fat	\$W	\$B	BW	WW	YW
-1.4	42	+72	24		+0.50	+0.55	+0.045	32.27	40.86	1/81	1/104	1/99

Selling ½ interest and full possession-Recommended for use on heifers- WOW!!! A truly unique individual with an impeccable pedigree, breed changing phenotype and phenomenal carcass characteristics. **This 5 frame tank is loaded with meat and muscle.** He tracks wide and true and has an abundance of rib and capacity. **This moderate framed herd bull prospect may not be for everyone, but if you want thick, easy doing cattle with the ability to thrive in harsh conditions, without sacrificing early growth and breed leading carcass characteristics this bull may be for you.** 751 had a birth weight of only 66 lbs. but went on to wean off his outstanding dam at 55% of her body weight with a 205 day weight of 705 lbs. to ratio 104 as his dams first calf. He earned a 365 day weight of 1220 lbs. and was at the top of the contemporary group for both IMF and REA with an

Lot 016 - Maternal Production Record						
	BW	WW	YW	IMF	REA	Pathfinder
Miss Wix 5139	1/81	1/104	1/99	1/147	1/120	
Miss Wix 7111	4/98	4/105	4/105	18/102	18/103	
Miss Wix 365	10/102	10/106	7/108	12/102	12/103	X
Miss Wix 294	12/107	12/113	12/109			X
Miss Wix 682	10/105	10/112	10/111			X

IMF score of 6.00 to ratio 147 and a REA of 14.7 to ratio 120. **His unique EPD profile puts him in a very rare class within the Angus Breed.** His CED of +11 ranks in the best 4% of the breed for non-parent bulls and his BW EPD of -1.4 ranks in the lowest 2% of the breed. 751's WW and YW EPD's rank right at or near breed average and his IMF of +.50 ranks in the top 5% and his REA EPD of +.55 ranks in the top 15%. His \$weaning Index of +32.27 ranks in the top 3% and his \$Beef index of +40.86 ranks in the top 25% of the breed for non-parent Angus bulls. His dam is an outstanding daughter of BT Right Time 24J. **She is moderate framed, near perfect uddered and easy fleshing. She is a member of the Miss Wix cow family and is the maternal sister to Miss Wix 2022 of McCumber.** She is off to a wonderful start with 1/104 for weaning and is nursing a super heifer calf by LT Timberwolf who was born in Mid January. **The daughters and grand daughters of Miss Wix 7111 of McCumber have really been getting the job done. They have produced three of the very top herd bull prospects selling in this sale including Lot 1, Lot 8 and Lot 16. They are also extremely fertile, very productive, have near flawless udders and maintain their body condition very well.**



Lot: **17 McCumber 004 Traveler 773**

Calved	Reg. #	Ind. Record	
1/30/07	15813276	BW	95
		WW	740
		205	680
		WR	100
		ADG	3.73
		YW	1,258
		365	1,277
		YR	104
		IMF	3.52/86
		REA	12.7/103
		FAT	0.37/116

Sitz Traveler 8180		GDAR Traveler 71
SAV 8180 Traveler 004	Boyd Forever Lady 8003	Sitz Everelda Entense 1137
		AAR New Trend
		SVF Forever Lady 57D
		Leachman Right Time
		Sitz Everelda Entense 1137
		Circle Oak Lucys Boy 625
		Blackcap 807 of McCumber



Grand dam of Lot 18.

EPDs										Dam's Prod.		
BW	WW	YW	Milk	SC	IMF	REA	Fat	\$W	\$B	BW	WW	YW
3.3	46	1+89	22		1-.15	1+.37	1+.017	22.59	25.72	4/108	4/108	4/110

Selling 2/3 interest and full possession- A super structured, thick made, eye catcher by 004. 773 will have no problem getting your attention on sale day. He is long bodied, heavy muscled and super correct on his feet and legs. He weaned off his Pathfinder dam with an actual weaning weight of 740 lbs. He gained 3.73 lbs/day and earned a 365 day weight of 1277 lbs. to ratio 104. His dam is a super uddered, easy fleshing daughter of Pine Creek Right Time 1147, who earned Pathfinder status with a WWR of 4/108 and a calving interval of 367 days. She has never missed on first service AI and has produced 2 daughters that of sold for an average of \$3750 dollars through our female sale. She continues to be a top producer and has never failed to bring in a good one.

Lot: **18 McCumber 383 Tradition 765**

Calved	Reg. #	Ind. Record	
1/29/07	15813271	BW	77
		WW	718
		205	699
		WR	103
		ADG	3.71
		YW	1,234
		365	1,293
		YR	105
		IMF	4.5/110
		REA	12.8/104
		FAT	0.39/122

Leachman Right Time		N Bar Emulation EXT
McCumber Tradition 383	Lassie 7015 of McCumber	Leachman Erica 0025
		McCumber 124 Traveler 212
		Lassie 648 of McCumber
		Vermilion Dateline 7078
		Miss Wix 7111 of McCumber
		McCumber 124 Traveler 212
		Gale 5101 of McCumber



EPDs										Dam's Prod.		
BW	WW	YW	Milk	SC	IMF	REA	Fat	\$W	\$B	BW	WW	YW
3.1	37	1+73	21		1+.14	1+.36	1+.036	20.76	29.03	2/95	2/98	2/103

A moderate framed, heavy muscled son of McCumber Tradition 383. This thick butted, big scrotaled bull has ratioed over 100 at every measure. He earned a 205 day weight of 700 lbs. to ratio 103, gained 3.71 lbs/day to ratio 108 and recorded a 365 day weight of 1293 to ratio 105. To go along with this he scanned very well with an IMF score of 4.50 to ratio 110 and a REA of 12.8 to ratio 104. His dam is a member of the Gale cow family and traces back to one of the top cows we have ever produced. 765 is a super complete beef bull that should sire outstanding replacement females and thick, heavy steer calves.



Lot:

20 McCumber 383 Tradition 7148

Calved 2/15/07 Reg. # 15813190

Leachman Right Time
McCumber Tradition 383
 Lassie 7015 of McCumber

N Bar Emulation EXT
 Leachman Erica 0025
 McCumber 124 Traveler 212
 Lassie 648 of McCumber

McCumber Foundation 701
Enchantress 018 of McCumber
 Enchantress 719 McCumber

McCumber 124 Traveler 212
 Miss Wix 235 of McCumber
 Mr Wix of McCumber 204
 Enchantress 5130 McCumber

Ind. Record	
BW	101
WW	704
205	676
WR	100
ADG	3.57
YW	1,200
365	1,247
YR	102
IMF	3.77/92
REA	12.9/105
FAT	0.29/91

EPDs										Dam's Prod.		
BW	WW	YW	Milk	SC	IMF	REA	Fat	\$W	\$B	BW	WW	YW
5.5	31	+62	20	+24	+0.05	+22	+0.22	13.56	20.13	4/106	4/99	5/97

Selling 2/3 interest and full possession- A well structured, big topped, thick -butted son of McCumber Tradition 383. 7148 is an attractive, well-made bull that stands down on outstanding feet and legs. He performed well, weaning off right at 700 lbs. and gaining 3.57 lbs/day. He earned a 365 day weight 1257 lbs. to ratio 102 and recorded a 12.9 REA to ratio 105. His dam is moderate framed, possesses massive volume, is easy fleshing with natural thickness and has a nice udder. She has produced two sons which have sold through our bull sale to Troy Gottbreht and Kent Mc Dougall in ND. 7148 combines the best of Tradition and Foundation into a pleasing package with the ability to sire outstanding females and thick topped, good looking steer calves.

Lot:

19 McCumber 551 Traveler 732

Calved 1/23/07 Reg. # 15849803

McCumber 7111 Total Value
McCumber Total Value 551
 B Pride 9124 of McCumber

Vermilion Dateline 7078
 Miss Wix 7111 of McCumber
 Sitz Traveler 9929
 B Pride 839 of McCumber

McCumber 124 Traveler 212
Miss Wix 2190 of McCumber
 Miss Wix 8009 McCumber

Traveler 124 GDAR
 Miss Wix 365 of McCumber
 R R Scotchcap 9440
 Miss Wix 235 of McCumber

Ind. Record	
BW	97
WW	800
205	723
WR	107
ADG	3.28
YW	1,256
365	1,248
YR	102
IMF	4.32/106
REA	11.6/94
FAT	0.32/100

EPDs										Dam's Prod.		
BW	WW	YW	Milk	SC	IMF	REA	Fat	\$W	\$B	BW	WW	YW
4.1	38	+66	27		+1.11	+0.08	+0.12	22.89	25.09	4/97	4/107	4/106

This masculine beef bull is wide based, deep bodied and has as much width and shape to his rump as you will find in an Angus Bull. He hit the 800 lb. mark at weaning and earned a 205 day weight of 723 lbs. to ratio 107. His Pathfinder dam has been extremely productive and maintains a calving interval of 366 days. She is a long bodied, high volume, daughter of McCumber 124 Traveler 212 with a super udder and outstanding feet and legs. This is her first son and two daughters have sold for an average of nearly \$3000, while one has been retained in the herd. The cows behind her include Miss Wix 235 of McCumber who is the dam of McCumber Foundation 701.



Lot 019 - Maternal Production Record						
	BW	WW	YW	IMF	REA	Pathfinder
Miss Wix 2190	4/97	4/107	4/106			
Miss Wix 8009	4/101	4/107	4/106			X
Miss Wix 235		10/104	9/104			
Miss Wix 235 is the dam of McCumber Foundation 701.						
Miss Wix 117		10/119	9/111			X

Lot:

21 McCumber 4X13 Extra 737

Calved 1/24/07 Reg. # 15813253

N Bar Emulation EXT
Sinclair Extra 4X13
 N Bar Lady Ida SCC 2P37

Emulation N Bar 5522
 N Bar Primrose 2424
 N Bar Prime Time D806
 N Bar Lady Ida F1080

McCumber 155 Bando 214
Miss Wix 546 of McCumber
 Miss Wix 359 of McCumber

Tehama Bando 155
 Miss Wix 365 of McCumber
 BT New Trend 172K
 GKAF Miss Wix 029

Ind. Record	
BW	88
WW	700
205	713
WR	105
ADG	3.61
YW	1,202
365	1,291
YR	105
IMF	4.42/108
REA	12/98
FAT	0.3/94

EPDs										Dam's Prod.		
BW	WW	YW	Milk	SC	IMF	REA	Fat	\$W	\$B	BW	WW	YW
3	40	+76	24		+26	+15	+0.19	23.72	35.27	1/105	1/105	1/105

A moderate framed, thick made son of Sinclair Extra 4X13. 737 is phenotypically one of my favorite 4x13 sons with a masculine, beef bull look, extra rib and more shape and expression to his rear quarter. He carries a little more birth weight on the maternal side of the pedigree, so he is one of the few sons of 4x13 that will not be recommended for heifers. He has done well from the start with a 205 day weight of 713 lbs to ratio 105 as his dam's first calf. He gained 3.61 lbs/day and earned a 365 day weight of nearly 1300 lbs. to ratio 105. **737 is a very complete bull that should be able to thrive under an array of environmental conditions. He is bred and managed to be that way.**





Flush brother to lot 23

Lot: **22** **McCumber 383 Tradition 7104**

Calved	Reg. #	Ind. Record	
2/4/07	15813153	BW	85
		WW	702
		205	695
		WR	103
		ADG	3.83
		YW	1,234
		365	1,308
		YR	107
		IMF	4.55/111
		REA	12/98
		FAT	0.33/103

Leachman Right Time	N Bar Emulation EXT
McCumber Tradition 383	Leachman Erica 0025
Lassie 7015 of McCumber	McCumber 124 Traveler 212
	Lassie 648 of McCumber
	GAR Precision 1680
Twin Valley Precision E161	WCC Blackcap C9
Miss Wix 4130 of McCumber	Rito 054 GDAR
Miss Wix 5007 of McCumber	Miss Wix 365 of McCumber

Lot: **23** **McCumber 004 Traveler 7153**

Calved	Reg. #	Ind. Record	
2/16/07	15813195	BW	95
		WW	722
		205	695
		WR	100
		ADG	3.44
		YW	1,200
		365	1,245
		YR	100
		IMF	4.94/123
		REA	13.2/106
		FAT	0.35/113

Sitz Traveler 8180	GDAR Traveler 71
SAV 8180 Traveler 004	Sitz Everelda Entense 1137
Boyd Forever Lady 8003	AAR New Trend
	SVF Forever Lady 57D
	N Bar Emulation EXT
Leachman Right Time	Leachman Erica 0025
Lassie 206 of McCumber	AAR New Trend
Lassie 272 of McCumber	Lassie 252 of McCumber

EPDs										Dam's Prod.		
BW	WW	YW	Milk	SC	IMF	REA	Fat	\$W	\$B	BW	WW	YW
3.5	32	1+73	21	1+.21	1+.13	1+.45	1+.024	16.31	30.92	2/90	2/107	2/108

EPDs										Dam's Prod.		
BW	WW	YW	Milk	SC	IMF	REA	Fat	\$W	\$B	BW	WW	YW
1+3.8	1+51	1+91	1+24	1+.78	1+.05	1+.47	1+.016	25.33	36.2	3/102	3/111	3/107

7104 is another high performing, well made son of McCumber Tradition 383. 7104 is masculine, thick-butted and moves out extremely free and easy as he travels. He was one of the top gaining bulls in the pen with an ADG of 3.83 lbs/day. He earned a 365 day weight of 1308 lbs to ratio 107. His dam is a member of the Miss Wix cow family and is a moderate framed cow with femininity and outstanding production to this point. She has a BWR of 2/90, a WWR of 2/107 and a YWR of 2/108. Her ultrasound ratios are outstanding as well. She has 2/131 for IMF and 2/106 for REA. Miss Wix 4130 has been extremely fertile, settling AI every year and her 4x13 son sold last year for \$4250 to Rustin Smith in Nevada.



Above: Maternal Grand Dam of Lot22
Right: Sire of Lot 22

Selling 2/3 interest and full possession- This thick-made, meat machine by 004 is the outstanding flush brother to the Lot 2 bull selling in this sale. **7153 possesses extra width and dimension. He is extremely deep bodied and puts a foot down in all four corners.** He is a big scrotaled bull with a clean sheath and has that easy fleshing, good doing look. He performed very well. He weaned of his recipient dam at 722 lbs. and gained nearly 3.50 lbs/day on a very high roughage ration. His ultrasound data was extremely good with an IMF of 4.94 to ratio 123 and a REA of 13.2 to ratio 106. **It is rare that a 004 son will have that much IMF.** His dam is the out standing Leachman Right Time daughter Lassie 206 of McCumber who was lost in the fall of 2006 due to an injury. Lot 2 and Lot 23 will be the last sons ever offered for sale out of her. Lassie 206 was one of the easiest fleshing, thickest made cows we ever had on this ranch. Beyond that, she was extremely fertile, very productive, had a gentle disposition and stood on excellent feet and legs. 7153 is a definite herd bull prospect. **He not only has an outstanding phenotype, but he is backed by one of the top cows, from one of the strongest cow families on the ranch.**



Maternal Brother to lot 23



Lot: **24 McCumber 449 T Value 7102**

Calved 2/4/07 Reg. # 15813152

McCumber 7111 Total Value
McCumber Total Value 449
Miss Wix 7007 of McCumber

Leachman Right Time
Miss Wix 583 of McCumber
Miss Wix 0010 of McCumber

Vermilion Dateline 7078
Miss Wix 7111 of McCumber
McCumber 124 Traveler 212
Miss Wix 030 of McCumber

N Bar Emulation EXT
Leachman Erica 0025
Sitz Traveler 9929
Miss Wix 5007 of McCumber

Ind. Record	
BW	80
WW	760
205	785
WR	116
ADG	3.37
YW	1,228
365	1,324
YR	108
IMF	4.63/113
REA	12.4/101
FAT	0.45/141

EPDs											Dam's Prod.		
BW	WW	YW	Milk	SC	IMF	REA	Fat	\$W	\$B	BW	WW	YW	
1.6	42	+74	26		+1.10	+1.15	+0.042	28.81	24.91	1/96	1/116	1/108	

Selling 2/3 interest and full possession- Recommended for use on heifers- A calving ease, herd bull prospect with muscle, depth, dimension and eye appeal. 7102 puts a lot of things together very well and could easily be moved up higher in the sale order. He weaned off his young Right Time dam at 760 lbs to earn a 205 day weight of 785 lbs. and a ratio of 116 as his dam's first calf. He recorded a 365 day weight of 1324 lbs. to ratio 108 and scanned extremely well with an IMF score of 4.63 to ratio 113 and a REA of 12.4 to ratio 101. His dam is a moderate framed, perfect uddered member of the Miss Wix family and traces directly to Miss Wix 365 of McCumber. She has never missed AI and is off to an outstanding start. 7102 offers an alternative calving ease pedigree, but should also inject a lot of performance in the right kind of package.

Lot: **25 McCumber Total Value 7116**

Calved 2/7/07 Reg. # 15813162

Vermilion Dateline 7078
McCumber 7111 Total Value
Miss Wix 7111 of McCumber

SAV 8180 Traveler 004
B Pride 404 of McCumber
B Pride 2010 of McCumber

Connealy Dateline
Vermilion Blackbird 5044
GDAR Traveler 71
Miss Wix 365 of McCumber

Sitz Traveler 8180
Boyd Forever Lady 8003
McCumber 054 Rito 326
B Pride 5122 of McCumber

Ind. Record	
BW	85
WW	758
205	753
WR	111
ADG	3.21
YW	1,204
365	1,267
YR	103
IMF	4.49/110
REA	14.1/115
FAT	0.29/91

EPDs											Dam's Prod.		
BW	WW	YW	Milk	SC	IMF	REA	Fat	\$W	\$B	BW	WW	YW	
3.1	49	+78	27		+1.10	+1.44	+0.013	29.97	33.42	2/90	2/108	1/103	

Selling 2/3 interest and full possession- This moderate framed, heavy muscled beef bull is an outstanding son of McCumber 7111 Total Value. This mating was done to create a herd bull out of one of our favorite 004 daughters and I think we may have accomplished that. **7116 has the right frame, abundant depth, a ton of shape and dimension to his top and rump and the cow power behind him to be a positive addition to anyone's herd.** 7116 weaned off his outstanding dam at 758 lbs. to earn a 205 day weight of 753 lbs. with a WW ratio of 111. He recorded a 365 day weight of 1267 to ratio 103 and scanned extremely well with an IMF score of 4.49 to ratio 110 and a REA of 14.1 to ratio 115. **His dam is a 5.5 frame daughter of 004 with an abundance of rib, natural thickness and a near perfect udder.** She is outstanding on her feet and legs and is also very fertile. She has settled first service AI every year and is well on her to Pathfinder status. She is currently nursing an outstanding herd sire prospect by Leachman Right Time 2700 and her first calf was an outstanding 4x13 heifer calf that sold as a weaned heifer for \$5250 to Agri Resources in MT. **B Pride 404 of McCumber is the kind of cow you would like to have a whole herd of.** The cows behind her have been equally impressive, which included one of the very best McCumber 124 Traveler 212 daughters we ever had. **Expect 7116 to sire outstanding, highly efficient females and males with extra muscle and early growth.**



Maternal Sister of Lot 25

Lot 025 - Maternal Production Record						
	BW	WW	YW	IMF	REA	Pathfinder
B Pride 404	2/90	2/108	1/103	1/110	1/115	
B Pride 2010	4/99	4/104	3/101	3/113	3/106	
B Pride 5122	5/103	5/111	4/107	10/106	10/98	X
B Pride 274	5/104	5/106	4/104			
B Pride 387	10/100	10/100	10/98			
B Pride 937	8/108	9/113	6/111			X



Maternal
Brothers to
Lot 27.

Lot: **26** **McCumber 004 Traveler 752**

Calved	Reg. #	Ind. Record	
1/27/07	15813264	BW	95
		WW	790
		205	720
		WR	106
		ADG	3.68
		YW	1,302
		365	1,309
		YR	106
		IMF	3.49/85
		REA	12.7/103
		FAT	0.36/113

Sitz Traveler 8180	GDAR Traveler 71
SAV 8180 Traveler 004	Sitz Everelda Entense 1137
Boyd Forever Lady 8003	AAR New Trend
	SVF Forever Lady 57D
	GDAR Rainmaker 340
Sitz SLS Rainmaker 7596	SLS Barbara Perfection 2571
Enchantress 086 of McCumber	McCumber 953 Rito 420
Enchantress 816 McCumber	Enchantress 687 McCumber

EPDs										Dam's Prod.		
BW	WW	YW	Milk	SC	IMF	REA	Fat	\$W	\$B	BW	WW	YW
3.8	44	1+85	21	1+.67	1-.11	1+.26	1+.014	20.96	25.81	6/101	6/101	6/103

This big, stout cowboy's bull is long, thick and deep. 752 weaned off his dam at nearly 800 lbs. and earned a 205 day weight of 720 to ratio 106. He gained 3.68 lbs/day and weighed off test at 1302 lbs, with a 365 day weight of 1309 lbs. to ratio 106. 752 will impress you with his overall power and thickness. His dam is a moderate framed cow that fleshes easy and has an excellent udder. She has earned a WW ratio of 101 on 6 calves. To go along with that she has a YWR of 6/103, IMF 6/107 and REA 6/102. She is nursing her 7th calf and has settled AI every year. If you're looking for length, thickness and extra lbs. be sure to check out this bull.



Lot: **27** **McCumber 465 RT Time 779**

Calved	Reg. #	Ind. Record	
1/31/07	15840294	BW	91
		WW	748
		205	731
		WR	108
		ADG	3.54
		YW	1,240
		365	1,297
		YR	106
		IMF	4.38/107
		REA	14.4/117
		FAT	0.32/100

Pine Creek Right Time 1147	Leachman Right Time
MC Cumber 1147 RT Time 465	Sitz Everelda Entense 1137
Miss Wix 2027 of Mc Cumber	Garrison 8128 Dynamite
	Miss Wix 352 of Mc Cumber
	A A R New Trend
BT New Trend 172K	BT Everelda Entense 57D
Lady Barbola 4148 Mc Cumber	Mc Cumber Foundation 701
Lady Barbola 171 Mc Cumber	Lady Barbola 684 Mc Cumber

EPDs										Dam's Prod.		
BW	WW	YW	Milk	SC	IMF	REA	Fat	\$W	\$B	BW	WW	YW
3.6	46	1+75	28		1+.07	1+.49	1+.008	27.6	32.08	2/100	2/107	2/108

Selling 2/3 interest and full possession- This outstanding son of McCumber 1147 RT Time 465 is **extremely well made, has an abundance of shape to his top which he carries out into a big expressive rear quarter.** He is very correct on his feet and legs and possesses extra style and substance. He has been outstanding at every measure with a 205 day weight of 731 lbs to ratio 108. He recorded a 365 day weight of nearly 1300 lbs to ratio 106 and scanned an IMF 4.38 to ratio 107. His REA of 14.4 for a ratio of 117 to confirm the visual muscle he exhibits. His dam is a very fertile, high producing daughter of BT New Trend 172K and has earned a WWR of 2/107, an YWR of 2/108 and a REA of 2/114. Her Pathfinder dam is one of the top McCumber Foundation 701 daughters on the ranch. His grand dam has produced two sons which have sold for an average \$5000



through past bull sales and all of her daughters have been retained. His sire did an outstanding job on a limited number of calves, so expect to see more of his sons in future sales. 779 will not only add lbs. in the right package, but will inject outstanding carcass characteristics into his progeny as well.

Lot:

28 McCumber 004 Traveler 714

Calved 1/19/07 Reg. # 15813183

Ind. Record	
BW	73
WW	730
205	670
WR	99
ADG	3.48
YW	1,214
365	1,227
YR	100
IMF	2.95/72
REA	13.1/107
FAT	0.38/119

Sitz Traveler 8180
SAV 8180 Traveler 004
 Boyd Forever Lady 8003

GDAR Traveler 71
 Sitz Everelda Entense 1137
 AAR New Trend
 SVF Forever Lady 57D

BT New Trend 172K
Blackcap 311 of McCumber
 Blackcap 9125 of McCumber

AAR New Trend
 BT Everelda Entense 57D
 McCumber Powertrain HC 1025
 Blackcap 532 of McCumber

EPDs											Dam's Prod.		
BW	WW	YW	Milk	SC	IMF	REA	Fat	\$W	\$B		BW	WW	YW
0.7	43	1+79	24		1-.14	1+.36	1+.008	28.61	23.36		3/99	3/102	3/102

Recommended for use on heifers- This calving ease prospect by 004 is moderate framed, deep-bodied and heavy muscled. He is long fronted, with smooth shoulders and is extremely wide quartered when you get behind him. 714 is not your typical calving ease bull. He is big scrotaled, possesses a large REA and had top-notch performance. His dam is a moderate framed, easy fleshing daughter of 172K with ratios of BW 3/99, WW 3/102 and YW 3/102.



Lot:

29 McCumber Timberwolf 7141

Calved 2/12/07 Reg. # 15813185

Ind. Record	
BW	84
WW	708
205	692
WR	102
ADG	3.4
YW	1,180
365	1,236
YR	100
IMF	4.71/115
REA	12.6/102
FAT	0.31/97

Wulffs Ext 6106
LT Timberwolf 5014
 L T Ethelda 3245

N Bar Emulation EXT
 Wulffs Erica Dianna C116
 Sitz Value 7097
 L T Ethelda 9012

McCumber 124 Traveler 212
Miss Wix 3027 of McCumber
 Miss Wix 5168 of McCumber

Traveler 124 GDAR
 Miss Wix 365 of McCumber
 Rito 054 GDAR
 Miss Wix 756 of McCumber

EPDs											Dam's Prod.		
BW	WW	YW	Milk	SC	IMF	REA	Fat	\$W	\$B		BW	WW	YW
2.1	40	1+71	25	1+.37	1+.08	1+.16	1+.001	26.99	28.52		3/101	3/106	3/99

Selling 2/3 interest and full possession-Recommended for use on heifers- This muscular, big butted moderate framed herd bull prospect has been one of my favorite's from the start. The extra muscle shape to his top and hind quarter will impress you. His dam is a top producing Pathfinder daughter of McCumber 124 Traveler 212. Miss Wix 3027 is a moderate framed, perfect uddered cow with outstanding feet and legs. She is very fertile, settling AI every year and maintaining an outstanding production record. Her dam Miss Wix 5168 of McCumber was an outstanding daughter of Rito 054 and a maternal sister to Miss Wix 918 of McCumber who did an outstanding job at Shady Brook in TN. **7141 descends from an outstanding cow family and is the type of bull that should add positives to even the best cow herds.**



Grand Dam of Lot 29

Lot 029 - Maternal Production Record

	BW	WW	YW	IMF	REA	Pathfinder
Miss Wix 3027	3/101	3/106	3/99			
Miss Wix 5168	4/102	4/106	3/104			
Miss Wix 756	6/107	6/104	6/106			X
Miss Wix 235	10/108	10/104	9/104			
Miss Wix 235 is the dam of McCumber Foundation 701						
Miss Wix 117	10/102	10/119	9/111			X



Lot: **30 McCumber 504 T Value 742**

Calved	Reg. #	Ind. Record	
1/25/07	15849804	BW	98
		WW	796
		205	723
		WR	107
		ADG	3.8
		YW	1,324
		365	1,331
		YR	108
		IMF	4.43/108
		REA	13.8/112
		FAT	0.38/119

McCumber 7111 Total Value	Vermilion Dateline 7078
McCumber Total Value 504	Miss Wix 7111 of McCumber
Lassie 206 of McCumber	Leachman Right Time
	Lassie 272 of McCumber
McCumber Mr Wix 7104	Mr Wix of McCumber 204
Enchantress 286 of McCumber	B Pride 488 of McCumber
Enchantress 086 of McCumber	Sitz SLS Rainmaker 7596
	Enchantress 816 McCumber

EPDs										Dam's Prod.		
BW	WW	YW	Milk	SC	IMF	REA	Fat	\$W	\$B	BW	WW	YW
4.3	44	1+82	27		1+.18	1+.41	1+.018	22.6	37.42	4/105	4/102	4/107

This high performing son of McCumber Total Value 504; who is the maternal brother to lot 2 and son of Lassie 206 of McCumber that sold to Ed and Lori Williams in MS for \$7000 as a feature of our 2006 bull sale, has a tremendous amount of length and muscle. He performed at the top of the group for all measurable traits with an actual weaning weight of nearly 800 lbs. which earned him a 205 day weight of 723 lbs. to ratio 107. He gained 3.80 lbs/day and weighed off test at 1324 lbs. and had a 365 day weight of 1331 lbs. to ratio 108. He scanned extremely well with an IMF of 4.43 to ratio 108 and an actual REA of 14.2. His dam is a high volume, easy fleshing female with a super udder and outstanding production. She has a WWR of 4/102, a YWR of 4/107, an IMF of 4/111 and a REA of 4/102. His grand dam has been equally productive and is the mother of the bull selling as lot 26.



Sire of Lot 30



Lot: **31 McCumber Timberwolf 7119**

Calved	Reg. #	Ind. Record	
2/7/07	15813165	BW	80
		WW	734
		205	730
		WR	108
		ADG	3.77
		YW	1,258
		365	1,333
		YR	109
		IMF	5.88/144
		REA	13.3/108
		FAT	0.22/69

Wulffs Ext 6106	N Bar Emulation EXT
LT Timberwolf 5014	Wulffs Erica Dianna C116
L T Ethelda 3245	Sitz Value 7097
	L T Ethelda 9012
McCumber 7111 Total Value	Vermilion Dateline 7078
Rosetta 486 of McCumber	Miss Wix 7111 of McCumber
Rosetta 9003 of McCumber	R R Scotchcap 9440
	Rosetta 405 of McCumber

EPDs										Dam's Prod.		
BW	WW	YW	Milk	SC	IMF	REA	Fat	\$W	\$B	BW	WW	YW
1.4	47	1+85	25		1+.18	1+.25	1+.001	29.31	39.1	2/91	2/116	2/111

Selling 2/3 interest and full possession- Recommended for use on heifers- A LT Timberwolf son that raises the bar pretty high. 7119 is a long, smooth bull with an abundance of muscle and excellent feet and legs. He has excelled from the start with only an 80 lb. birth weight and a 205 day weight of 730 lbs. to ratio 108. He had a gain ratio of 109 and earned a 365 day weight of 1333 lbs. to ratio 109. **Along with this he had the #2 IMF score of the group at 5.88 to ratio 144 and also scanned a REA of 13.3 to ratio 108.** His dam is a deep ribbed, good uddered daughter of McCumber 7111 Total Value and is off to a tremendous start with a BWR of 2/91, a WWR of 2/116 and a YWR of 2/111. Her ultrasound record is equally impressive with an IMF of 2/117 and a REA of 2/110. Rosetta 486 of McCumber traces directly to the dam of McCumber Stretch 604 and her mother sold to Rick Mc Conville in NE through our 2006 cow sale. **This high performance, calving ease herd bull prospect not only descends from a highly proven cow family, but he has curve bender statistics and outstanding carcass characteristics as well.**

Lot 031 - Maternal Production Record

	BW	WW	YW	IMF	REA	Pathfinder
Rosetta 486	2/91	2/116	2/111	2/117	2/110	
Rosetta 9003	5/97	5/102	5/105			
Rosetta 405	8/95	8/105	7/101			
	Rosetta 405 is the dam of McCumber Stretch 604					
Rosetta 148	8/107	8/103	6/102			X

Lot:

32 McCumber 536P Ext 7184

Calved	Reg. #	Ind. Record	
3/3/07	15813222	BW	97
		WW	750
		205	759
		WR	112
		ADG	3.24
		YW	1,200
		365	1,277
		YR	104
		IMF	4.93/121
		REA	12.7/103
		FAT	0.42/131

N Bar Emulation EXT	Emulation N Bar 5522
Sitz JLS Emulation Ext 536P	N Bar Primrose 2424
Ideal 4465 of 6807 4286	DHD Traveler 6807
	E E 4286 of Ideal 2240 1254
AAR New Trend	VDAR Shoshone 548
Rosetta 1017 of McCumber	Donna AAR 74
Rosetta 128 of McCumber	Rito 054 GDAR
	Rosetta 287 of McCumber

EPDs											Dam's Prod.		
BW	WW	YW	Milk	SC	IMF	REA	Fat	\$W	\$B	BW	WW	YW	
4.7	38	+64	26		+0.07	+0.26	+0.021	21.95	22.86	5/104	5/107	5/100	

Selling 2/3 interest and full possession- The first son of our new herd sire Sitz JLS Emulation Ext 536P and what a cow maker he should be. **7184 is wide based, deep bodied and thick made.** He earned a 205 day weight of 759 lbs. to ratio 112 and had a 365 day weight of 1277 to ratio 104. He scanned outstanding with an IMF of 4.93 to ratio 121 and a REA of 12.7 to ratio 103. His very moderate framed dam has been outstanding with a WWR of 5/107. She is a Pathfinder daughter of old AAR New Trend and is easy fleshing, has excellent foot structure and a near flawless udder. Rosetta 1017 has produced three sons that have sold for an average of \$2750 to Bar V Ranch, Matt and Earl Rolland and the Stigen Ranch of ND and her grandson will be retained for use here at McCumber. Her grand dam produced 14 calves on the ranch and maintained her Pathfinder status with a WWR of 105. 7184 stacks some of the most proven female sires the Angus breed has ever known with EXT, 6807, New Trend, 054 and Shoshone Viking GD60 in his pedigree. **7184 has the ability to sire progeny with explosive early**

growth, outstanding carcass and females with bred in longevity, fertility, fleshing ease and outstanding udders. If you're looking for a sure thing cow maker, 7184 should be on the list.



Lot:

33 McCumber 513 Traveler 729

Calved	Reg. #	Ind. Record	
1/22/07	15825117	BW	75
		WW	716
		205	723
		WR	107
		ADG	3.73
		YW	1,234
		365	1,320
		YR	107
		IMF	4.26/104
		REA	12.8/104
		FAT	0.23/72

SAV 8180 Traveler 004	Sitz Traveler 8180
McCumber 004 Traveler 513	Boyd Forever Lady 8003
Miss Wix 301 of McCumber	Leachman Right Time
	Miss Wix 1119 of McCumber
McCumber 155 Bando 214	Tehama Bando 155
Miss Wix 581 of McCumber	Miss Wix 365 of McCumber
Miss Wix 382 of McCumber	BT New Trend 172K
	Miss Wix 9166 of McCumber

EPDs											Dam's Prod.		
BW	WW	YW	Milk	SC	IMF	REA	Fat	\$W	\$B	BW	WW	YW	
1	43	+80	24		-0.04	+0.33	+0.002	28.2	28.74	1/91	1/107	1/107	

Lot:

34 McCumber 419 Equator 770

Calved	Reg. #	Ind. Record	
1/30/07	15813273	BW	95
		WW	800
		205	735
		WR	109
		ADG	3.84
		YW	1,334
		365	1,349
		YR	110
		IMF	4.04/99
		REA	11.9/97
		FAT	0.26/81

McCumber Equator 6122	Papa Equator 2928
McCumber 6122 Equator 419	Miss Wix 365 of McCumber
Rosetta 162 of McCumber	McCumber Foundation 701
	Rosetta 601 of McCumber
McCumber Ferdinand 896	R R Ferdinand 758D
Blackcap 037 of McCumber	Miss Wix 554 of McCumber
Blackcap 339 of McCumber	KMA Highroller 5025
	Blackcap 398 of McCumber

EPDs											Dam's Prod.		
BW	WW	YW	Milk	SC	IMF	REA	Fat	\$W	\$B	BW	WW	YW	
3.7	44	+77	24	+0.21	+0	-0.01	+0.003	24.36	26.28	6/107	6/110	6/104	

If you're looking for a high-powered growth bull then 770 may fit the bill. He weaned off his Pathfinder dam at 800 lbs. with a 205 day weight of 735 to ratio 109. He gained at the top of the group with an ADG of 3.84 and weighed off test at 1334 lbs. to earn a 365 day weight of 1349 and a YWR of 110. 770 is a ruggedly built bull with a tremendous amount of length and natural thickness. His dam has been extremely productive with a WWR of 6/110, a YWR of 6/104 and a calving interval of 6/362 days. Blackcap 037 was one of the bigger cows on the ranch, but always maintained her condition, settled AI consistently and had a near perfect udder.



Recommended for use on heifers- 729 is the first son of our top selling bull in 2006, McCumber 004 Traveler 513. He is an extremely sound structured bull. 729 is smooth shouldered, has big testicles and a tremendous amount of rib. He earned a 205 day weight of 723 lbs. to ratio 107 as his dam's first calf. He also performed well on test with an ADG of 3.73 lbs/day to ratio 108 and a 365 day weight of 1320 to ratio 107. Along with his performance he scanned an IMF of 4.26 to ratio 104 and had a REA of 12.8 to ratio 104. His dam is an outstanding daughter of McCumber 155 Bando 214. She is moderate framed, easy fleshing and excellent uddered. She descends from a line of cows that includes 6 consecutive generations of Pathfinders and is off to a wonderful start herself.

Lot:

35 McCumber Timberwolf 798

Calved 2/3/07	Reg. # 15813292	Ind. Record	
		BW	102
		WW	770
		205	715
		WR	106
		ADG	3.94
		YW	1,318
		365	1,345
		YR	110
		IMF	2.54/62
		REA	11.7/95
		FAT	0.23/72

Wulffs Ext 6106
LT Timberwolf 5014
L T Ethelda 3245

N Bar Emulation EXT
Wulffs Erica Dianna C116
Sitz Value 7097
L T Ethelda 9012

McCumber Powertrain HC 1025
Gale 244 of McCumber
Gale 948 of McCumber

Papa Equator 2928
Rosetta 048 of McCumber
McCumber 124 Traveler 212
Gale 5101 of McCumber

EPDs										Dam's Prod.		
BW	WW	YW	Milk	SC	IMF	REA	Fat	\$W	\$B	BW	WW	YW
5.3	50	I+90	22		I-.14	I+.31	I-.005	20.87	28.9	4/106	4/104	3/103

This big bruiser by LT Timberwolf will add growth and performance to a set of calves. 798 weaned off his very productive dam at 770 lbs. with a 205 day weight of 715 lbs. to ratio 106. He gained nearly 4.00 lbs/day and earned a 365 day weight of 1345 to ratio 110. His dam is a big bodied, easy fleshing, good uddered daughter of McCumber Powertrain 1025 and a member of the highly productive Gale cow family. Not only has his dam been very productive but she has settled AI every year and maintains a calving interval of 4/367 days.

Lot:

36 McCumber 419 Equator 739

Calved 1/24/07	Reg. # 15813255	Ind. Record	
		BW	87
		WW	714
		205	726
		WR	107
		ADG	3.35
		YW	1,180
		365	1,262
		YR	103
		IMF	3.49/85
		REA	12.4/101
		FAT	0.23/72

McCumber Equator 6122
McCumber 6122 Equator 419
Rosetta 162 of McCumber

Papa Equator 2928
Miss Wix 365 of McCumber
McCumber Foundation 701
Rosetta 601 of McCumber

Leachman Right Time
Miss Wix 503 of McCumber
Miss Wix 201 of McCumber

N Bar Emulation EXT
Leachman Erica 0025
Tehama Bando 155
Miss Wix 365 of McCumber

EPDs										Dam's Prod.		
BW	WW	YW	Milk	SC	IMF	REA	Fat	\$W	\$B	BW	WW	YW
2.1	43	I+76	23		I-.04	I+.14	I-.001	27.38	25.9	1/104	1/107	1/103

Recommended for use on heifers- 739 is one of the most muscular bulls in the pen. He has a lot of pop to his top and as much expression to his rump and stifle as any bull in the sale. Not only is he full of muscle but he stands down on a lot of heel to his hoof and possesses a large scrotum. He weaned off his outstanding Right Time dam with a 205 day weight of 726 lbs. to ratio 107 and recorded a 365 day weight of 1262 lbs. to ratio 103. His dam is super uddered, very feminine and a grand daughter of Miss Wix 365 of McCumber. Expect 739 to add muscle to a set of calves as well as produce outstanding females.

Lot:

37 McCumber 536P Ext 7147

Calved 2/15/07	Reg. # 15813189	Ind. Record	
		BW	81
		WW	754
		205	741
		WR	109
		ADG	3.18
		YW	1,196
		365	1,250
		YR	101
		IMF	3.77/92
		REA	14.4/117
		FAT	0.26/81

N Bar Emulation EXT
Sitz JLS Emulation Ext 536P
Ideal 4465 of 6807 4286

Emulation N Bar 5522
N Bar Primrose 2424
DHD Traveler 6807
E E 4286 of Ideal 2240 1254

McCumber 6122 Equator 8113
Rosetta 334 of McCumber
Rosetta 961 of McCumber

McCumber Equator 6122
Rosetta 421 of McCumber
Mr Wix of McCumber 204
Rosetta 4117 of McCumber

EPDs										Dam's Prod.		
BW	WW	YW	Milk	SC	IMF	REA	Fat	\$W	\$B	BW	WW	YW
2	42	I+72	23		I+.06	I+.29	I-.002	27.88	29.59	3/94	3/97	3/97

Recommended for use on heifers- 7147 is a heavy muscled, long bodied bull by Sitz JLS Emulation Ext 536P. He weaned off his perfectly uddered dam at 754 lbs. with a 205 day weight of 741 lbs. to ratio 109. His visual muscle expression is confirmed by the fact that he scanned a REA of 14.4 to ratio 117. His dam is an extremely easy fleshing, perfect uddered daughter of McCumber 6122 Equator 8113 and member of the Rosetta cow family. This unique calving ease sire, will not only add muscle, but should sire low maintenance, moderate framed, easy fleshing, excellent uddered females.



Sale Day Telephones

701.246.3366
701.871.9800
701.871.1072

Or Contact Superior Productions at
1-800-431-4452 to pre-register for a buyer's
number and gain access to the bid line number

Lot:

38 McCumber 551 T Value 792

Calved 2/3/07 Reg. # 15849810

Ind. Record	
BW	86
WW	718
205	666
WR	98
ADG	3.31
YW	1,178
365	1,196
YR	97
IMF	4.54/111
REA	12.3/100
FAT	0.37/116

McCumber 7111 Total Value
McCumber Total Value 551
 B Pride 9124 of McCumber

Vermilion Dateline 7078
 Miss Wix 7111 of McCumber
 Sitz Traveler 9929
 B Pride 839 of McCumber

BT New Trend 172K
B Pride 2219 JVR McCumber
 B Pride 287 of McCumber

AAR New Trend
 BT Everelda Entense 57D
 054 PJM 1438
 B Pride 4103 of McCumber

EPDs											Dam's Prod.		
BW	WW	YW	Milk	SC	IMF	REA	Fat	\$W	\$B		BW	WW	YW
1.5	32	1+59	28		1+.05	1+.11	1+.012	26.34	18.59		4/102	4/105	4/107

Selling 2/3 interest and full possession- Recommended for use on heifers- This moderate framed, deep bodied, naturally thick beef bull has been one of my favorites all year. **792 has the body type that would indicate he would sire good doing, moderate framed, thick cattle with the ability to maintain themselves under an array of management situations.** Along with this he scanned very well with an IMF of 4.54 to ratio 111 and a REA of 12.3 to ratio 100. His dam is a tremendous beef cow. She is a beautiful Angus cow, with fleshing ability, outstanding fertility, a sound structure and a perfect udder. B Pride 2219 of McCumber has produced 3 sons which have sold for an average of \$3500 selling to Mike Frank in MN and Jay and Frank Cudworth in ND. His Pathfinder dam has been very productive, with a WWR of 4/105 and YWR of 4 /107. His Pathfinder grand dam has excellent production as well with a WWR of 9/106 and YWR 7/102. **The cow family behind 792 has not only been productive, they have been very fertile and have stayed in production for many years.**



Lot:

39 McCumber 4X13 Extra 7158

Calved 2/19/07 Reg. # 15813199

Ind. Record	
BW	91
WW	728
205	708
WR	100
ADG	3.64
YW	1,234
365	1,290
YR	100
IMF	5.38/134
REA	12.1/98
FAT	0.34/110

N Bar Emulation EXT
Sinclair Extra 4X13
 N Bar Lady Ida SCC 2P37

Emulation N Bar 5522
 N Bar Primrose 2424
 N Bar Prime Time D806
 N Bar Lady Ida F1080

Leachman Right Time
Miss Wix 2022 HC McCumber
 Miss Wix 7111 of McCumber

N Bar Emulation EXT
 Leachman Erica 0025
 GDAR Traveler 71
 Miss Wix 365 of McCumber

EPDs											Dam's Prod.		
BW	WW	YW	Milk	SC	IMF	REA	Fat	\$W	\$B		BW	WW	YW
1-.1	1+42	1+75	1+25	1+0	1+.40	1+.18	1+.031	30.18	37.8		4/95	4/105	3/105



Selling 2/3 interest and full possession- Recommended for use on heifers- This is the flush brother to the herd bull prospect selling as lot 8. 7158 weaned off his recipient dam at 728 lbs. and performed very well on test with an ADG of 3.64 lbs/day. He had a 365 day weight of 1290 lbs. and scanned extremely well with an IMF of 5.38 to ratio 134. 7158 is a long bodied bull with depth and outstanding feet and legs. His dam is the outstanding Pathfinder cow Miss Wix 2022 of McCumber who is well on her way to becoming one of the top cows ever produced on this ranch. The flush sister to Lot 39 and Lot 8 is one of the top heifers in the replacement pen and is a phenotypic replica of her mother. 7158 has the bred in ability to sire outstanding females and males with performance and outstanding carcass characteristics.

Lot:

40 McCumber 004 Traveler 7118

Calved 2/7/07 Reg. # 15813164

Ind. Record	
BW	88
WW	690
205	690
WR	102
ADG	3.73
YW	1,208
365	1,287
YR	105
IMF	2.76/67
REA	12.2/99
FAT	0.37/116

Sitz Traveler 8180
SAV 8180 Traveler 004
 Boyd Forever Lady 8003

GDAR Traveler 71
 Sitz Everelda Entense 1137
 AAR New Trend
 SVF Forever Lady 57D

McCumber 155 Bando 214
Miss Wix 4144 of McCumber
 Miss Wix 1119 of McCumber

Tehama Bando 155
 Miss Wix 365 of McCumber
 McCumber Ferdinand 896
 Miss Wix 8002 of McCumber

EPDs										Dam's Prod.		
BW	WW	YW	Milk	SC	IMF	REA	Fat	\$W	\$B	BW	WW	YW
2.9	46	+83	20		-1.22	+1.21	+0.13	24.61	19.46	2/98	2/97	2/98

A real deep bodied, soggy made calf with natural thickness and a smooth, long stride. 7118 is a moderate birth weight bull with a WWR of 102 and a 365 day weight of 1287 lbs. to ratio 105. His dam is an ultra feminine, moderate framed daughter of McCumber 155 Bando 214 with an outstanding udder. After her dam she traces to 5 consecutive generations of Pathfinder cows which includes Miss Wix 365 of McCumber.



Lot 40 - MC Cumber 004 Traveler 7118

Lot:

41 McCumber 004 Traveler 7151

Calved 2/16/07 Reg. # 15813193

Ind. Record	
BW	104
WW	732
205	705
WR	100
ADG	3.67
YW	1,242
365	1,292
YR	100
IMF	5.31/132
REA	12.2/98
FAT	0.32/103

Sitz Traveler 8180
SAV 8180 Traveler 004
 Boyd Forever Lady 8003

GDAR Traveler 71
 Sitz Everelda Entense 1137
 AAR New Trend
 SVF Forever Lady 57D

Sitz Traveler 9929
B Pride 9124 of McCumber
 B Pride 839 of McCumber

DHD Traveler 6807
 Sitz Everelda Entense 1137
 PJM Power 291
 B Pride 134 of McCumber

EPDs										Dam's Prod.		
BW	WW	YW	Milk	SC	IMF	REA	Fat	\$W	\$B	BW	WW	YW
+3.8	+44	+80	+22	+0.39	+1.11	+1.22	+0.09	22.67	33.31	7/101	7/106	5/104

Selling 2/3 interest and full possession- This flush brother to lot 10 has done extremely well. He weaned off his recipient dam at 732 lbs. gained 3.67 lbs/day and earned a 365 day weight of 1292 lbs. 7151 scanned one of the high IMF scores of the group at 5.31 to ratio 132. He is long, deep and thick and has a long, smooth stride with outstanding foot design. His dam is the easy fleshing, high volume, Pathfinder B Pride 9124 of McCumber. She has already produced one herd bull selling to Lindskov Angus in SD and she sold to Fortune's Rafter U Cross Ranch through our 2006 cow sale and has entered their embryo program.



Lot 42 - McCumber 536P Ext 7196

Lot:

42 McCumber 536P Ext 7196

Calved 3/11/07 Reg. # 15813233

Ind. Record	
BW	92
WW	662
205	732
WR	108
ADG	3.15
YW	1,100
365	1,236
YR	100
IMF	5.23/128
REA	13/106
FAT	0.36/113

N Bar Emulation EXT
Sitz JLS Emulation Ext 536P
 Ideal 4465 of 6807 4286

Emulation N Bar 5522
 N Bar Primrose 2424
 DHD Traveler 6807
 E E 4286 of Ideal 2240 1254

Pine Creek Right Time 1147
Lassie 434 of McCumber
 Lassie 2140 of McCumber

Leachman Right Time
 Sitz Everelda Entense 1137
 BT New Trend 172K
 Lassie 914 of McCumber

EPDs										Dam's Prod.		
BW	WW	YW	Milk	SC	IMF	REA	Fat	\$W	\$B	BW	WW	YW
3.8	45	+80	25		+1.18	+1.25	+0.23	24.37	34.26	2/102	2/112	2/107

Selling 2/3 interest and full possession- One of the youngest bulls in the sale and possibly a real sleeper. 7196 is extremely long with a lot of muscle expression down his top. He carries this muscle out into a big expressive rump and is one of the more stylish bulls in this sire group. He weaned off his outstanding dam with a 205 day weight of 732 lbs. to ratio 108 and scanned exceptionally with an IMF of 5.23 to ratio 128 and a REA of 13 to ratio 106. His dam produced the popular and Co-2nd top selling bull in last year's sale at \$9000 to Currant Creek Ranch in MT. His perfect uddered, big ribbed, easy fleshing dam has been outstanding to this point with a WWR of 2/112, YWR 2/107, IMF 2/111 and a REA of 2/110.



Lot 41 - MC Cumber 004 Traveler 7151



Lot: **43 McCumber 4X13 Extra 797**

Calved	Reg. #	Ind. Record	
2/3/07	15813291	BW	88
		WW	708
		205	675
		WR	100
		ADG	3.84
		YW	1,242
		365	1,289
		YR	105
		IMF	4.89/120
		REA	11.3/92
		FAT	0.41/128

N Bar Emulation EXT	Emulation N Bar 5522
Sinclair Extra 4X13	N Bar Primrose 2424
N Bar Lady Ida SCC 2P37	N Bar Prime Time D806
	N Bar Lady Ida F1080
Vermilion Dateline 7078	Connealy Dateline
Miss Wix 365 of McCumber	Vermilion Blackbird 5044
Miss Wix 843 of McCumber	McCumber 953 Rito 420
	Miss Wix 6101 of McCumber

EPDs										Dam's Prod.		
BW	WW	YW	Milk	SC	IMF	REA	Fat	\$W	\$B	BW	WW	YW
1.7	43	+86	22		+0.31	+0.09	+0.036	25.19	37.52	2/97	2/101	2/104

Selling 2/3 interest and full possession-Recommended for use on heifers- This deep bodied, high volume, long made son of 4x13 performed very well on test with an ADG of 3.84 lbs/day. He has an IMF of 4.89 to ratio 120. His dam is a powerful easy fleshing daughter of VRD. She is moderate framed and has done a nice job with a BWR of 2/97, WWR of 2/101, YWR 2/104 and IMF of 2/108. She has never missed AI and is nursing an outstanding bull calf again this year. After her dam she traces to 4 consecutive Pathfinder cows. The cows behind him are stacked for productivity, fertility and longevity.



Lot 043 - Maternal Production Record						
	BW	WW	YW	IMF	REA	Pathfinder
Miss Wix 365	2/97	2/101	2/104			
Miss Wix 843	7/105	7/104	4/103			
Miss Wix 6101	9/105	9/112	8/110			X
Miss Wix 0105	8/106	8/108	7/109			X
Miss Wix 128	12/112	12/109	11/107			X
Miss Wix 187	14/101	14/102	14/103			X

Lot: **44 McCumber 536P Ext 7132**

Calved	Reg. #	Ind. Record	
2/10/07	15813176	BW	104
		WW	746
		205	707
		WR	104
		ADG	3.37
		YW	1,214
		365	1,246
		YR	101
		IMF	4.06/99
		REA	11.9/97
		FAT	0.25/78

N Bar Emulation EXT	Emulation N Bar 5522
Sitz JLS Emulation Ext 536P	N Bar Primrose 2424
Ideal 4465 of 6807 4286	DHD Traveler 6807
	E E 4286 of Ideal 2240 1254
Q A S Traveler 23-4	Band 234 of Ideal 3163
Miss Wix 1001 of McCumber	Q A S Blackbird Eve 601 1
Miss Wix 352 of McCumber	KMA Highroller 5025
	Miss Wix 098 of McCumber

EPDs										Dam's Prod.		
BW	WW	YW	Milk	SC	IMF	REA	Fat	\$W	\$B	BW	WW	YW
4.4	37	+64	24		+0.08	+0.11	+0.001	21.56	24.42	5/102	5/102	5/97

A masculine, early maturing son of 536P who has tremendous length and is stout made. **This bull possesses a lot of libido. He is rugged and should be able to thrive in any environment. He acts like a mature bull right now.** His pedigree is a very unique blend of EXT, 6807 and the Miss Wix cow family. These sons of 536P are some of the younger bulls in the pen. We expect they will mature out like their sire and he has gotten more impressive every day we've owned him. The dam of 7132 is a moderate framed, good footed, easy fleshing daughter of old QAS Traveler 23-4. She has an excellent udder and after her, she traces to 5 consecutive generations of Miss Wix Pathfinder cows.



Lot: **45 McCumber 449 T Value 776**

Calved	Reg. #	Ind. Record	
1/31/07	15813277	BW	75
		WW	704
		205	726
		WR	107
		ADG	3.11
		YW	1,136
		365	1,224
		YR	99
		IMF	4.63/113
		REA	13.4/109
		FAT	0.4/125

McCumber 7111 Total Value	Vermilion Dateline 7078
McCumber Total Value 449	Miss Wix 7111 of McCumber
Miss Wix 7007 of McCumber	McCumber 124 Traveler 212
	Miss Wix 030 of McCumber
McCumber Tradition 383	Leachman Right Time
Miss Wix 572 of McCumber	Lassie 7015 of McCumber
Miss Wix 950 of McCumber	McCumber 71 Traveler 7114
	Miss Wix 709 of McCumber

EPDs										Dam's Prod.		
BW	WW	YW	Milk	SC	IMF	REA	Fat	\$W	\$B	BW	WW	YW
1	33	+59	27		+0.10	+0.22	+0.038	27.17	18.19	1/91	1/107	1/99

Recommended for use on heifers- This well made, heavy muscled son of McCumber Total Value 449 is **long strided, smooth shouldered and possesses extra shape and expression to his rear quarter.** 776 weaned off his outstanding dam with a 205 day weight of 726 lbs. to ratio 107 as his dam's first calf. To go along with this he had an IMF of 4.63 to ratio 113 and a REA of 13.4 to ratio 109. **His dam is an outstanding daughter of McCumber Tradition 383.** Miss Wix 572 is moderate framed, deep bodied, easy fleshing and has an absolutely perfect udder. She is very fertile and after raising this bull bred back and calved even earlier this year. (See his photo, page 31).

Lot:

46 McCumber 4X13 Extra 7187

Calved		Reg. #		Ind. Record	
3/6/07		15813225		BW	83
				WW	674
				205	768
				WR	113
				ADG	3.41
				YW	1,148
				365	1,314
				YR	107
				IMF	4.84/118
				REA	12.5/102
				FAT	0.31/97

N Bar Emulation EXT	Emulation N Bar 5522
Sinclair Extra 4X13	N Bar Primrose 2424
N Bar Lady Ida SCC 2P37	N Bar Prime Time D806
	N Bar Lady Ida F1080
McCumber Classic 202	Tehama Bando 155
Miss Wix 5184 of McCumber	Miss Wix 365 of McCumber
Miss Wix 2129 of McCumber	McCumber Foundation 701
	Miss Wix 765 of McCumber

EPDs											Dam's Prod.		
BW	WW	YW	Milk	SC	IMF	REA	Fat	\$W	\$B		BW	WW	YW
0.8	42	+68	24		+0.27	+0.15	+0.012	31.16	32.79		1/100	1/113	1/107

Recommended for use on heifers- 7187 is a sure-shot heifer bull out of 4X13. He weaned off with a 205 day weight of 768 lbs. to ratio 113 as his dam's first calf. This March yearling earned a 365 day weight of 1314 lbs. to ratio 107 and scanned very well with an IMF of 4.84 to ratio 118 and a REA of 12.5 to ratio 102. His dam is a very nice daughter of McCumber Classic 202 and his grand dam is one of the nicest looking Foundation daughters on the ranch. 7187 has performed well at every measure and is bred very similar to such bulls as Leachman Right Time and Wulf's EXT 6106.



Lot:

47 McCumber 513 Traveler 782

Calved		Reg. #		Ind. Record	
1/31/07		15825123		BW	89
				WW	680
				205	627
				WR	93
				ADG	3.51
				YW	1,168
				365	1,189
				YR	97
				IMF	4/98
				REA	12/98
				FAT	0.44/138

SAV 8180 Traveler 004	Sitz Traveler 8180
McCumber 004 Traveler 513	Boyd Forever Lady 8003
Miss Wix 301 of McCumber	Leachman Right Time
	Miss Wix 1119 of McCumber
McCumber Next Step 9012	McCumber Foundation 701
Rosetta 102 of McCumber	Gale 607 of McCumber
Rosetta 9003 of McCumber	R R Scotchcap 9440
	Rosetta 405 of McCumber

EPDs											Dam's Prod.		
BW	WW	YW	Milk	SC	IMF	REA	Fat	\$W	\$B		BW	WW	YW
2	29	+62	20		-0.05	+0.12	+0.035	20.14	13.08		4/88	4/96	4/96

Recommended for use on heifers- 782 is a moderate framed, deep bodied, thick quartered son of McCumber 004 Traveler 513. **513 was the top selling bull in our 2006 bull sale to Larry Wunderlich in TX. He has been used very successfully on heifers. He is a short gestation sire and the calves are made right to come easy.** His dam is a moderate framed, easy fleshing grand daughter of McCumber Foundation 701. She has absolutely perfect feet and has a very nice udder.

Lot:

48 McCumber Timberwolf 7154

Calved		Reg. #		Ind. Record	
2/17/07		15813196		BW	85
				WW	662
				205	682
				WR	101
				ADG	3.32
				YW	1,124
				365	1,213
				YR	99
				IMF	4.44/109
				REA	12.8/104
				FAT	0.25/78

Wulffs Ext 6106	N Bar Emulation EXT
LT Timberwolf 5014	Wulffs Erica Dianna C116
L T Ethelda 3245	Sitz Value 7097
	L T Ethelda 9012
McCumber New Trend 1206	AAR New Trend
Miss Wix 4205 of McCumber	Miss Wix 705 of McCumber
Miss Wix 0001 of McCumber	Traveler 1148 GDAR
	Miss Wix 5007 of McCumber

EPDs											Dam's Prod.		
BW	WW	YW	Milk	SC	IMF	REA	Fat	\$W	\$B		BW	WW	YW
2.3	31	+57	25		+0.04	+0.27	-0.011	23.57	20.72		2/88	2/105	2/101

Recommended for use on heifers- 7154 is a super stylish, heavy muscled, son of LT Timberwolf. He performed very well across the board and scanned very well with an IMF of 4.44 to ratio 109 and had a REA of 12.8 to ratio 104. His dam is a moderate framed, perfect uddered daughter of McCumber New Trend 1206. She is a member of the Miss Wix cow family and is off to a great start with a BWR 2/88, WWR 2/105, YWR 2/101, IMF 2/109 and REA 2/108.

Lot:

49 McCumber 551 T Value 783

Calved 2/1/07 Reg. # 15849808

Ind. Record	
BW	78
WW	710
205	697
WR	103
ADG	3.25
YW	1,162
365	1,217
YR	99
IMF	3.73/91
REA	12.4/101
FAT	0.27/84

McCumber 7111 Total Value
McCumber Total Value 551
 B Pride 9124 of McCumber

Vermilion Dateline 7078
 Miss Wix 7111 of McCumber
 Sitz Traveler 9929
 B Pride 839 of McCumber

Ranger G 1720
Miss Wix 4002 of McCumber
 Miss Wix 702 of McCumber

GAR Precision 1680
 Sitz Everelda Entense 1137
 McCumber 124 Traveler 212
 Miss Wix 235 of McCumber

EPDs										Dam's Prod.		
BW	WW	YW	Milk	SC	IMF	REA	Fat	\$W	\$B	BW	WW	YW
1.2	36	1+63	27		1+.17	1+.21	1+.007	28.31	27.35	2/92	2/104	2/102

Recommended for use on heifers- 783 is a soggy made, go-doing calving ease prospect by McCumber Total Value 551. 783 is deep bodied, naturally thick and excellent on his feet and legs. His dam is a super uddered female, with outstanding feet and legs and a wonderful production record. The cows behind her have been equally strong and trace directly to the dam of McCumber Foundation 701.

Lot 049 - Maternal Production Record

	BW	WW	YW	IMF	REA	Pathfinder
Miss Wix 4002	2/92	2/104	2/102			
Miss Wix 702		5/107	2/109			
Miss Wix 702 is a full sister to McCumber Foundation 701						
Miss Wix 235		10/104	9/104			
Miss Wix 235 is the dam of McCumber Foundation 701						
Miss Wix 117		10/119	9/111			X



Miss Wix 235 of McCumber

Great Grand Dam of Lot 49



McCumber Total Value 551

Sire of Lot 49



Lot 50 - McCumber 536P Ext 7165

Lot:

50 McCumber 536P Ext 7165

Calved 2/22/07 Reg. # 15813206

Ind. Record	
BW	76
WW	660
205	689
WR	102
ADG	3.6
YW	1,160
365	1,265
YR	103
IMF	4.49/110
REA	13.4/109
FAT	0.32/100

N Bar Emulation EXT
Sitz JLS Emulation Ext 536P
 Ideal 4465 of 6807 4286

Emulation N Bar 5522
 N Bar Primrose 2424
 DHD Traveler 6807
 E E 4286 of Ideal 2240 1254

Boyd New Day 8005
Lassie 4117 of McCumber
 Lassie 1155 of McCumber

AAR New Trend
 SVF Forever Lady 57D
 McCumber 6122 Equator 8113
 Lassie 708 of McCumber

EPDs										Dam's Prod.		
BW	WW	YW	Milk	SC	IMF	REA	Fat	\$W	\$B	BW	WW	YW
1	42	1+82	23		1+.11	1+.37	1+.010	26.81	35.37	2/83	2/101	2/103

Selling 2/3 interest and full possession- Recommended for use on heifers- This meat wagon by Sitz JLS Emulation EXT 536P, is extremely long bodied and possesses extra muscle shape and dimension to his top and rear quarter. He started life at only 76 lbs. and earned a 205 day weight of nearly 700 lbs. to ratio 102. He recorded a 365 day weight of 1265 lbs. to ratio 103, to go along with that he scanned outstanding with an IMF of 4.49 to ratio 110 and had a REA of 13.4 to ratio 109. His EPD profile is outstanding and phenotypically he is a moderate framed, heavy muscled, tank. His dam is a super uddered daughter of Boyd New Day and a member of the Lassie cow family that has been so strong here at McCumber.



Sitz JLS Emulation EXT 536P

Lot:

51 McCumber 4X13 Extra 716

Calved 1/19/07 Reg. # 15813201

N Bar Emulation EXT
Sinclair Extra 4X13
 N Bar Lady Ida SCC 2P37

Emulation N Bar 5522
 N Bar Primrose 2424
 N Bar Prime Time D806
 N Bar Lady Ida F1080

BT Right Time 24J
Blackcap 587 of McCumber
 Blackcap 2213 of McCumber

Leachman Right Time
 Sitz Everelda Entense 1905
 McCumber 6122 Equator 8113
 Blackcap 5126 of McCumber

Ind. Record	
BW	87
WW	724
205	727
WR	107
ADG	3.5
YW	1,210
365	1,287
YR	105
IMF	4.11/100
REA	11.9/97
FAT	0.35/109

EPDs											Dam's Prod.		
BW	WW	YW	Milk	SC	IMF	REA	Fat	\$W	\$B		BW	WW	YW
2.1	44	+80	23		+22	+14	+0.27	27.08	34.09		1/104	1/107	1/105

A long bodied smooth made son of Sinclair Extra 4X13. 716 performed very well across the board with a 205 day weight of 727lbs. to ratio 107 as his dam's first calf. He gained 3.50 lbs/day and earned a 365 day weight of 1287 to ratio 105. His dam is a moderate framed, good uddered daughter of BT Right Time 24J and his grand dam has entered our Embryo Transplant program. Blackcap 2213 of McCumber is a beautiful cow. She is moderate framed, deep bodied, easy fleshing and has a flawless udder with small well placed teats, a perfect attachment both front and rear and it is clean. 716 would be a ¾ brother to the herd bull prospects by 4X13 selling as Lot 6 and 16.

Lot:

52 McCumber Ext 7003

Calved 2/15/07 Reg. # 15815386

Emulation N Bar 5522
N Bar Emulation EXT
 N Bar Primrose 2424

Emulation 31
 Ankony 8F78 Lass 8F275
 Emulation 31
 Primrose N Bar 9962

Rito 054 GDAR
Miss Wix 5007 of McCumber
 Miss Wix 365 of McCumber

CSU Rito 4114
 Blackcap Forever 485 GDAR
 Shoshone 247 PJM
 Miss Wix 294 of McCumber

Ind. Record	
BW	89
WW	740
205	710
WR	100
ADG	3.06
YW	1,166
365	1,200
YR	100
IMF	4.4/109
REA	14.7/119
FAT	0.37/119

EPDs											Dam's Prod.		
BW	WW	YW	Milk	SC	IMF	REA	Fat	\$W	\$B		BW	WW	YW
+1.9	+29	+59	+19	+17	+10	+56	+0.30	20.1	21.99		4/98	4/101	4/102

Selling 2/3 interest and full possession-Recommended for use on heifers- An outstanding son of EXT and flush brother to the herd bull prospect selling as lot 12. 7003 is long bodied smooth made, big scrotaled and heavy muscled. He weaned off his recipient dam at 740lbs. and scanned the 2nd largest REA of the bulls in the offering. Along with his outstanding REA of 14.7 with a ratio 119, he did very well on IMF with a 4.40 to ratio 109. His dam is Miss Wix 5007 of McCumber who consistently adds REA to her progeny and is a full sister to some of the top cows in the Angus breed. We only got one female out of this flush and she is excellent with a superb udder, tremendous length and an easy fleshing appearance. Two flush brothers sold in last year's sale to Dave Mc Conville in NE and Drake Clark in KS.



Lot:

53 McCumber 004 Traveler 7006

Calved 2/20/07 Reg. # 15813131

Sitz Traveler 8180
SAV 8180 Traveler 004
 Boyd Forever Lady 8003

GDAR Traveler 71
 Sitz Everelda Entense 1137
 AAR New Trend
 SVF Forever Lady 57D

Sitz Traveler 9929
B Pride 9124 of McCumber
 B Pride 839 of McCumber

DHD Traveler 6807
 Sitz Everelda Entense 1137
 PJM Power 291
 B Pride 134 of McCumber

Ind. Record	
BW	92
WW	710
205	692
WR	100
ADG	2.82
YW	1,102
365	1,143
YR	100
IMF	3.99/99
REA	11.5/93
FAT	0.23/74

EPDs											Dam's Prod.		
BW	WW	YW	Milk	SC	IMF	REA	Fat	\$W	\$B		BW	WW	YW
+3.8	+44	+80	+22	+39	-0.04	+14	-0.01	22.75	28.39		7/101	7/106	5/104

7006 is a flush brother to the herd bull prospect selling as lot 10 in this sale. He is long, thick and deep. His dam is the outstanding Pathfinder B Pride 9124 of McCumber. **She has been an outstanding female with fleshing ease, udder quality, fertility and outstanding production.** If you're looking for a group of outstanding full brothers to add consistency to a calf crop there are 5 of these bulls in this sale. Lot 10, 41, 53, 70 and 86



Dam of Lot 52 - Miss Wix 5007 of McCumber

Grand dam of Lot 52 - Miss Wix 365 of McCumber





Maternal brother to dam of Lot 54.

Lot: **54 McCumber 536P Ext 7180**

Calved 3/1/07 Reg. # 15814325

N Bar Emulation EXT
Sitz JLS Emulation Ext 536P
Ideal 4465 of 6807 4286

Emulation N Bar 5522
N Bar Primrose 2424
DHD Traveler 6807
E E 4286 of Ideal 2240 1254

BT New Trend 172K
Miss Wix 398 of McCumber
Miss Wix 7007 of McCumber

AAR New Trend
BT Everelda Entense 57D
McCumber 124 Traveler 212
Miss Wix 030 of McCumber

Ind. Record	
BW	85
WW	644
205	665
WR	98
ADG	3.32
YW	1,106
365	1,196
YR	97
IMF	4.32/106
REA	12.1/98
FAT	0.46/144

EPDs										Dam's Prod.		
BW	WW	YW	Milk	SC	IMF	REA	Fat	\$W	\$B	BW	WW	YW
2.2	31	I+60	27		I+.18	I+.11	I+.037	23.68	20.98	2/95	2/104	2/100

Selling 2/3 interest and full possession- Recommended for use on heifers- A moderate framed, extremely heavy muscled beef bull by Sitz JLS Emulation EXT 536P. 7180 is wide based, big topped and has a large, expressive rear quarter. He possesses the **body type that would lead me to believe he would work in any environment.** He is outstanding on his feet and legs and the cows behind him have been outstanding. **His pedigree is stacked with breed** greats such as EXT, 6807, New Trend, Right Time, 212, 054, Viking and 376. His dam is a moderate framed, super uddered daughter of BT New Trend 172K and she is a maternal sister to the herd sire McCumber Total Value 449. She has produced one son that sold for \$5000 through our 2006 bull sale to Tony Lindseth in IA.



Lot 054 - Maternal Production Record

	BW	WW	YW	IMF	REA	Pathfinder
Miss Wix 398	2/95	2/104	2/101	4/110	4/100	
Miss Wix 7007	7/97	7/107	6/103	11/99	11/101	
Miss Wix 030	3/102	3/111	2/109			
Miss Wix 235	10/108	10/104	9/104			
	Miss Wix 235 is the dam of McCumber Foundation 701					
Miss Wix 117	10/102	10/119	9/111			X

Lot:

55 McCumber 536P Emulation 733

Calved 1/23/07 Reg. # 15813251

N Bar Emulation EXT
Sitz JLS Emulation Ext 536P
Ideal 4465 of 6807 4286

Emulation N Bar 5522
N Bar Primrose 2424
DHD Traveler 6807
E E 4286 of Ideal 2240 1254

BT New Trend 172K
Miss Wix 317 of McCumber
Miss Wix 0192 of McCumber

AAR New Trend
BT Everelda Entense 57D
Hilltop Rito H218
Miss Wix 765 of McCumber

Ind. Record	
BW	80
WW	700
205	650
WR	96
ADG	2.99
YW	1,116
365	1,128
YR	92
IMF	3.91/96
REA	11.6/94
FAT	0.28/88

EPDs										Dam's Prod.		
BW	WW	YW	Milk	SC	IMF	REA	Fat	\$W	\$B	BW	WW	YW
1.7	36	I+62	22		I+.11	I+.10	I+.004	26.49	23.9	3/95	3/91	3/87

Recommended for use on heifers- 733 is moderate framed, big middled, long bodied and excellent on his feet and legs. He weaned off right at 700 lbs. and his dam is a moderate framed, easy fleshing, super uddered daughter of BT New Trend 172K. I think you will really like the appealing body type these 536P sons possess. **The heifer mates to the 536P sons are absolutely phenomenal.** They have the look of outstanding brood cows that will take care of themselves no matter what environment they are in. They have an easy fleshing, good doing look in a moderate package. We have extremely high hopes for them.

Lot:

56 McCumber 4X13 Extra 790

Calved 2/2/07 Reg. # 15813286

N Bar Emulation EXT
Sinclair Extra 4X13
N Bar Lady Ida SCC 2P37

Emulation N Bar 5522
N Bar Primrose 2424
N Bar Prime Time D806
N Bar Lady Ida F1080

Boyd New Day 8005
Rosetta 562 of McCumber
Rosetta 961 of McCumber

AAR New Trend
SVF Forever Lady 57D
Mr Wix of McCumber 204
Rosetta 4117 of McCumber

Ind. Record	
BW	71
WW	666
205	695
WR	103
ADG	3.27
YW	1,120
365	1,218
YR	99
IMF	5.25/128
REA	11.9/97
FAT	0.21/66

EPDs										Dam's Prod.		
BW	WW	YW	Milk	SC	IMF	REA	Fat	\$W	\$B	BW	WW	YW
-0.1	43	I+76	21		I+.35	I+.11	I+.007	29.86	39.43	1/86	1/103	1/99

Recommended for use on heifers- 790 should be a "sleep all night" heifer bull by 4X13. He is tremendously long-bodied, smooth shouldered and correct on his feet and legs. He started with only a 71 lb. birth weight, but still earned a 205 day weight of nearly 700 lbs. and recorded an IMF of 5.25 to ratio 128. His -1 birth weight EPD and the fact that his dam's calf this year only weighed 72lbs. should ensure his ability to be a sure bet heifer bull.



Grand Dam of Lot 56

Lot:

57 McCumber 551 T Value 744

Calved 1/26/07 Reg. # 15849806

McCumber 7111 Total Value
McCumber Total Value 551
 B Pride 9124 of McCumber

Vermilion Dateline 7078
B Pride 310 of McCumber
 B Pride 483 of McCumber

Vermilion Dateline 7078
 Miss Wix 7111 of McCumber
 Sitz Traveler 9929
 B Pride 839 of McCumber

Connealy Dateline
 Vermilion Blackbird 5044
 McCumber 124 Traveler 212
 B Pride 71 of McCumber

Ind. Record	
BW	77
WW	676
205	633
WR	94
ADG	3.22
YW	1,124
365	1,148
YR	94
IMF	3.62/89
REA	11/89
FAT	0.25/78

EPDs										Dam's Prod.		
BW	WW	YW	Milk	SC	IMF	REA	Fat	\$W	\$B	BW	WW	YW
1.1	37	1+68	23		1-.08	1+.21	1-.002	26.65	20.71	3/94	3/95	2/99

Recommended for use on heifers- 744 is another heifer bull candidate sired by the legitimate beef bull McCumber Total Value 551. 744 is naturally thick, smooth striding and eye appealing. His dam is a flawless uddered daughter of VRD and stems from a very productive, fertile cow family. Both her dam and grand dam reached Pathfinder status.

Lot:

58 McCumber 551 T Value 7109

Calved 2/5/07 Reg. # 15849798

McCumber 7111 Total Value
McCumber Total Value 551
 B Pride 9124 of McCumber

BT Traveler 228K
B Pride 273 of McCumber
 B Pride 690 of McCumber

Vermilion Dateline 7078
 Miss Wix 7111 of McCumber
 Sitz Traveler 9929
 B Pride 839 of McCumber

Sitz Traveler 9929
 BT Everelda Entense 57D
 McCumber 124 Traveler 212
 B Pride 245 of McCumber

Ind. Record	
BW	77
WW	726
205	677
WR	100
ADG	3.42
YW	1,202
365	1,224
YR	100
IMF	3.94/96
REA	11.6/94
FAT	0.38/119

EPDs										Dam's Prod.		
BW	WW	YW	Milk	SC	IMF	REA	Fat	\$W	\$B	BW	WW	YW
0.1	30	1+56	28		1+.13	1+.07	1+.021	26.7	18.42	4/99	4/103	4/102

Recommended for use on heifers- Long, deep and naturally thick, best describes this calving ease son of McCumber Total Value 551. He performed well at all measures and his dam is an excellent uddered daughter of BT Traveler 228K. She is the Grand dam to the herd bull prospect selling as lot 11. Her production record is strong with a BWR of 4/99, WWR 4/103, YWR 4/102 and an IMF of 4/113. Maternal Sister pictured below.



Maternal brother of Lot 59

Lot:

59 McCumber 383 Tradition 764

Calved 1/29/07 Reg. # 15813270

Leachman Right Time
McCumber Tradition 383
 Lassie 7015 of McCumber

McCumber 6122 Equator 8113
Miss Wix 343 of McCumber
 Miss Wix 0104 of McCumber

N Bar Emulation EXT
 Leachman Erica 0025
 McCumber 124 Traveler 212
 Lassie 648 of McCumber

McCumber Equator 6122
 Rosetta 421 of McCumber
 Sitz SLS Rainmaker 7596
 Miss Wix 843 of McCumber

Ind. Record	
BW	99
WW	774
205	728
WR	108
ADG	3.24
YW	1,224
365	1,246
YR	102
IMF	3.33/81
REA	12.2/99
FAT	0.22/69

EPDs										Dam's Prod.		
BW	WW	YW	Milk	SC	IMF	REA	Fat	\$W	\$B	BW	WW	YW
5.1	36	1+72	25		1-.09	1+.27	1+.009	17.03	21.52	3/102	3/109	3/106

764 is a bigger framed son of McCumber Tradition 383. He weaned off his outstanding Pathfinder dam at 774 lbs. to earn a 205 day weight of 728 lbs. with a ratio of 108. His dam is an outstanding daughter of McCumber 6122 Equator 8113. She is perfect uddered, moderate framed and easy fleshing. Her production record is outstanding with a BWR 3/102, WWR 3/109, YWR 3/106, IMF 3/100 and REA 3/107. She has produced one son that sold through our 2006 bull sale to Rick Mc Conville in NE for \$5750.



Lot:

60 McCumber 536P Ext 7163

Calved 2/21/07	Reg. # 15813204	Ind. Record		
		BW	81	
		WW	656	
		205	660	
		WR	97	
		ADG	3.71	
		YW	1,172	
		365	1,254	
		YR	102	
		IMF	4.08/100	
		REA	11.9/97	
		FAT	0.32/100	

N Bar Emulation EXT
Sitz JLS Emulation Ext 536P
 Ideal 4465 of 6807 4286

Emulation N Bar 5522
 N Bar Primrose 2424
 DHD Traveler 6807
 E E 4286 of Ideal 2240 1254

Leachman Right Time
Lovely Lady 341 of McCumber
 Lovely Lady 721 of McCumber

N Bar Emulation EXT
 Leachman Erica 0025
 Mr Wix of McCumber 204
 Lovely Lady 5149 McCumber

EPDs										Dam's Prod.		
BW	WW	YW	Milk	SC	IMF	REA	Fat	\$W	\$B	BW	WW	YW
1.9	38	+78	19		+0.09	+0.02	+0.020	22.06	28.32	3/96	3/96	3/103

Recommended for use on heifers- 7163 is long bodied, smooth fronted and a little bit bigger framed son of Sitz JLS Emulation EXT 536P. His dam is an easy fleshing, perfect uddered daughter of Right Time. She has produced one son and one daughter that have sold for an average of \$2750 through previous bull and female sales.



Lot:

61 McCumber 551 T Value 7100

Calved 2/4/07	Reg. # 15849797	Ind. Record		
		BW	77	
		WW	704	
		205	654	
		WR	97	
		ADG	3.04	
		YW	1,126	
		365	1,140	
		YR	93	
		IMF	3.85/94	
		REA	13.1/107	
		FAT	0.37/116	

McCumber 7111 Total Value
McCumber Total Value 551
 B Pride 9124 of McCumber

Vermilion Dateline 7078
 Miss Wix 7111 of McCumber
 Sitz Traveler 9929
 B Pride 839 of McCumber

Circle Oak Lucys Boy 625
Erianna 825 of McCumber
 Erianna 6148 of McCumber

VDAR Lucys Boy
 Homestretch Miss Wix 299
 McCumber 054 Rito 326
 Erianna 278 of McCumber

EPDs										Dam's Prod.		
BW	WW	YW	Milk	SC	IMF	REA	Fat	\$W	\$B	BW	WW	YW
0	28	+50	22		+0.02	+0.14	+0.024	25.56	9.7	8/91	8/96	6/96

Recommended for use on heifers- This moderate framed, sound structured son of McCumber Total Value 551 is heavy muscled and deep bodied. 7100 recorded a large REA at 13.1 to ratio 107. His dam is very fertile only missing AI one time on 9 calves. She has been a consistently light birth weight cow and has produced sons that have sold to Marvin Walters Jr, Jim Mongeon and Cliff Mattson all in ND.

Lot:

62 McCumber Ext 7008

Calved 2/26/07	Reg. # 15815388	Ind. Record		
		BW	84	
		WW	754	
		205	750	
		WR	100	
		ADG	2.76	
		YW	1,138	
		365	1,192	
		YR	100	
		IMF	4.28/106	
		REA	12.2/98	
		FAT	0.42/135	

Emulation N Bar 5522
N Bar Emulation EXT
 N Bar Primrose 2424

Emulation 31
 Ankony 8F78 Lass 8F275
 Emulation 31
 Primrose N Bar 9962

Rito 054 GDAR
Miss Wix 5007 of McCumber
 Miss Wix 365 of McCumber

Emulation 31
 Blackcap Forever 485 GDAR
 Shoshone 247 PJM
 Miss Wix 294 of McCumber

EPDs										Dam's Prod.		
BW	WW	YW	Milk	SC	IMF	REA	Fat	\$W	\$B	BW	WW	YW
+1.9	+29	+59	+19	+1.17	+0.09	+0.29	+0.036	20.06	18.95	4/98	4/101	4/102

Selling 2/3 interest and full possession- Recommended for use on heifers- A flush brother to the herd sire prospect selling as lot 12. Other flush brothers include lot 52 and 85. 7008 is a long bodied, smooth made bull. He weaned off his recipient mother at 754 lbs. and recorded an IMF of 4.28 to ratio 106. His dam is Miss Wix 5007 of McCumber and this will be the last son's to sell by her. **Put these "look a like" flush brothers together to produce a consistent, top-notch calf crop.**



Lot:

63 McCumber 4X13 Extra 7135

Calved 2/10/07	Reg. # 15813179	Ind. Record		
		BW	69	
		WW	578	
		205	626	
		WR	92	
		ADG	3.24	
		YW	1,028	
		365	1,144	
		YR	93	
		IMF	5.25/128	
		REA	12.2/99	
		FAT	0.4/125	

N Bar Emulation EXT
Sinclair Extra 4X13
 N Bar Lady Ida SCC 2P37

Emulation N Bar 5522
 N Bar Primrose 2424
 N Bar Prime Time D806
 N Bar Lady Ida F1080

BT Right Time 24J
Rosetta 538 of McCumber
 Rosetta 3173 of McCumber

Leachman Right Time
 Sitz Everelda Entense 9005
 McCumber 701 Fndation 1110
 Rosetta 1017 of McCumber

EPDs										Dam's Prod.		
BW	WW	YW	Milk	SC	IMF	REA	Fat	\$W	\$B	BW	WW	YW
-0.4	35	+67	22		+0.39	+0.23	+0.040	27.08	33.01	1/84	1/92	1/93

Recommended for use on heifers- 7135 is a real chunk by Sinclair Extra 4x13. He is moderate framed, heavy muscled and possesses an abundance of capacity. He scanned extremely well with an IMF of 5.25 to ratio 128 and a REA of 12.2 sq.in, which would be a 1.18 REA/CWT. He started with only a 69 lb. birth weight and should be a sure bet on heifers. His outstanding dam is a maternal sister to the bull we chose to retain from the calf crop and is nursing a super heifer calf by 004 this year.



Maternal Brother to Dam of Lot 63

Lot:

64 McCumber 536P Ext 7127

Calved	Reg. #	Ind. Record	
2/8/07	15813171	BW	83
		WW	700
		205	700
		WR	103
		ADG	2.33
		YW	1,024
		365	1,073
		YR	87
		IMF	3.87/95
		REA	11.1/90
		FAT	0.24/75

N Bar Emulation EXT
Sitz JLS Emulation Ext 536P
 Ideal 4465 of 6807 4286

Emulation N Bar 5522
 N Bar Primrose 2424
 DHD Traveler 6807
 E E 4286 of Ideal 2240 125

Leachman Right Time
MGSA Miss Wix 4010
 M G S A Miss Wix 012

N Bar Emulation EXT
 Leachman Erica 0025
 GDAR SVF Traveler 234D
 VDAR Miss Wix 6051

EPDs											Dam's Prod.		
BW	WW	YW	Milk	SC	IMF	REA	Fat	\$W	\$B		BW	WW	YW
2.7	43	+70	22		+0.09	+0	+0.001	27.67	27.15		2/90	2/99	2/91

Recommended for use on heifers- 7127 is a moderate framed, easy fleshing son of Sitz JLS Emulation EXT 536P. His dam is a wonderful daughter of Right Time. She is moderate framed, easy fleshing and has an outstanding udder. She is currently nursing an outstanding herd sire prospect by LT Timberwolf 5014.



Maternal brother to lot 65.

Lot:

65 McCumber 3108 VRD 7172

Calved	Reg. #	Ind. Record	
2/25/07	15813211	BW	106
		WW	700
		205	694
		WR	103
		ADG	3.22
		YW	1,148
		365	1,209
		YR	99
		IMF	3.03/74
		REA	11.7/95
		FAT	0.4/125

Vermilion Dateline 7078
McCumber 7078 VRD 3108
 Lassie 974 of McCumber

Connealy Dateline
 Vermilion Blackbird 5044
 McCumber Foundation 701
 Lassie 272 of McCumber

McCumber Foundation 701
B Pride 0103 of McCumber
 B Pride 786 of McCumber

McCumber 124 Traveler 212
 Miss Wix 235 of McCumber
 VDAR Rito 953
 B Pride 274 of McCumber

EPDs											Dam's Prod.		
BW	WW	YW	Milk	SC	IMF	REA	Fat	\$W	\$B		BW	WW	YW
6.5	29	+61	25	+0.98	+0.18	+0.06	+0.019	11.26	8.35		6/111	6/105	6/102

7172 is a bigger framed, rangier bull in the pen. This late February bull still weaned off his outstanding Foundation 701 dam at 700 lbs and recorded a 365 day weight over 1200 lbs. His dam is one of the top producing Foundation daughters in the herd with a WWR of 6/105 and a YWR of 6/102. She has had two sons sell to Haugen Cattle Co. in ND and Wayne Kukla in Killdeer ND.

Lot:

66 McCumber Commercial

Calved	Reg. #	Ind. Record	
10/30/06	14201305	BW	
		WW	
		205	
		WR	
		ADG	
		YW	
		365	
		YR	
		IMF	
		REA	
		FAT	

Mc Cumber Equator 6122
McCumber 6122 Equator 8113
 Rosetta 421 of McCumber

Papa Equator 2928
 Miss Wix 365 of McCumber
 Tehama Bando 155
 Rosetta 297 of McCumber
 Rito 054 G D A R
 Miss Wix 365 of McCumber
 A A R New Trend
 Blackcap 013 of McCumber

McCumber 054 Rito 326
Blackcap 5126 of McCumber
 Blackcap 231 of McCumber

EPDs											Dam's Prod.		
BW	WW	YW	Milk	SC	IMF	REA	Fat	\$W	\$B		BW	WW	YW

Commercial bull sells without registration papers- This is a fall born bull out of the donor cow Blackcap 2213 of McCumber. We are not sure who the sire is. If you need an older bull to cover a bigger group of cows this meat wagon may be one to look at. Just remember if you're participating or planning to participate in the Angus Source program, his calves will not qualify.

Lot:

67 McCumber 4X13 Extra 795

Calved	Reg. #	Ind. Record	
2/3/07	15813290	BW	87
		WW	688
		205	718
		WR	106
		ADG	3.8
		YW	1,216
		365	1,326
		YR	108
		IMF	4.31/105
		REA	12.6/102
		FAT	0.3/94

N Bar Emulation EXT
Sinclair Extra 4X13
 N Bar Lady Ida SCC 2P37

Emulation N Bar 5522
 N Bar Primrose 2424
 N Bar Prime Time D806
 N Bar Lady Ida F1080

Vermilion Dateline 7078
Lassie 0171 of McCumber
 Lassie 0171 of McCumber

Connealy Dateline
 Vermilion Blackbird 5044
 McCumber Foundation 701
 Lassie 272 of McCumber

EPDs											Dam's Prod.		
BW	WW	YW	Milk	SC	IMF	REA	Fat	\$W	\$B		BW	WW	YW
3.4	48	+91	21		+0.20	+0.23	+0.024	23.62	38.73		1/104	1/106	1/108

Selling 2/3 interest and full possession- 795 is a stout made, high volume, heavy muscled son of Sinclair Extra 4x13. He has excelled across the board. 795 weaned off with a 205 day weight of 718 lbs. to ratio 106 as his dam's first calf. He performed extremely well on test with an ADG of 3.80 lbs/day and a 365 day weight of 1326 lbs. to ratio 108. He didn't disappoint on the ultrasound either, with an IMF of 4.31 to ratio 105 and a REA of 12.6 to ratio 102. His dam is a super uddered, easy fleshing member of the Lassie cow family. Her dam is a full sister to Lassie 974 of McCumber, who was the high selling mature cow in our 2006 cow sale at \$9000 to Haywood Farms in IA. **This beef bull by 4X13 will add depth, body dimension, width and do-ability to a set of calves.**





Lot: **68 McCumber 383 Tradition 753**

Calved 1/27/07 Reg. # 15813265

Ind. Record	
BW	99
WW	736
205	672
WR	99
ADG	3.73
YW	1,254
365	1,269
YR	103
IMF	3.81/93
REA	12.9/105
FAT	0.36/113

Leachman Right Time
McCumber Tradition 383
Lassie 7015 of McCumber

N Bar Emulation EXT
Leachman Erica 0025
McCumber 124 Traveler 212
Lassie 648 of McCumber

Sitz SLS Rainmaker 7596
Miss Wix 0104 of McCumber
Miss Wix 843 of McCumber

GDAR Rainmaker 340
SLS Barbara Perfection 2571
McCumber 953 Rito 420
Miss Wix 6101 of McCumber

EPDs											Dam's Prod.		
BW	WW	YW	Milk	SC	IMF	REA	Fat	\$W	\$B		BW	WW	YW
5.1	32	+70	20		-1.07	+21	+0.027	12.98	18.6		5/103	5/98	5/102

753 is a bigger framed, high performing son of McCumber Tradition 383. He is extremely long bodied, stout designed and naturally thick. He weaned off at 736 lbs. and gained 3.73 lbs/day on test with a 365 day weight of 1269 lbs. Along with this he recorded an actual REA of 13.3 to ratio 105. His dam is a moderate framed, big middled daughter of Sitz Rainmaker and has produced one son that sold to Randy Smith in ND through our 2006 bull sale.

Lot: **69 McCumber Timberwolf 7040**

Calved 2/5/07 Reg. # 15860527

Ind. Record	
BW	93
WW	785
205	774
WR	106
ADG	2.99
YW	1,200
365	1,252
YR	105
IMF	3.72/109
REA	12.6/108
FAT	0.34/117

Wulffs Ext 6106
LT Timberwolf 5014
L T Ethelda 3245

N Bar Emulation EXT
Wulffs Erica Dianna C116
Sitz Value 7097
L T Ethelda 9012

S Right Time 205
Lassie 4157 of McCumber
Lassie 2158 of McCumber

Leachman Right Time
S Elcona 076
Leachman Right Time
Lassie 272 of McCumber

EPDs											Dam's Prod.		
BW	WW	YW	Milk	SC	IMF	REA	Fat	\$W	\$B		BW	WW	YW
+3.0	+44	+81	+21	+24	+0	+20	+0.013	24.24	28.33		2/101	2/100	2/96

7040 is a top-notch son of LT Timberwolf. This tremendously long bodied, heavy muscled bull has a big scrotum and excellent disposition. He weaned off his dam at nearly 800 lbs. without creep to earn a 205 day weight of 774 lbs. to ratio 106, to go along with this he had a 365 day weight of 1252 lbs. to ratio 105, an IMF ratio of 109 and a REA ratio of 108. His dam is a moderate framed, easy fleshing, perfect uddered grand daughter of Right Time and her mother is the flush sister to the dam of Lot 2 selling in this sale.

Lot: **70 McCumber 004 Traveler 7017**

Calved 3/9/07 Reg. # 15813139

Ind. Record	
BW	88
WW	670
205	693
WR	100
ADG	3.42
YW	1,146
365	1,240
YR	100
IMF	4.11/102
REA	12.7/102
FAT	0.28/90

Sitz Traveler 8180
SAV 8180 Traveler 004
Boyd Forever Lady 8003

GDAR Traveler 71
Sitz Everelda Entense 1137
AAR New Trend
SVF Forever Lady 57D

Sitz Traveler 9929
B Pride 9124 of McCumber
B Pride 839 of McCumber

DHD Traveler 6807
Sitz Everelda Entense 1137
PJM Power 291
B Pride 134 of McCumber

EPDs											Dam's Prod.		
BW	WW	YW	Milk	SC	IMF	REA	Fat	\$W	\$B		BW	WW	YW
+3.8	+44	+80	+22	+39	-0.02	+27	+0.005	22.59	29.42		7/101	7/106	5/104

7017 is a member of the flush that produced the herd bull selling as lot 10. This mid-March son of 004 had a 205 day weight of nearly 700 lbs. and scanned excellent with an IMF of 4.11 to ratio 102 and an REA of 12.7 to ratio 102. 7017 is a soggy, big middled, moderate framed bull. His dam is the outstanding Pathfinder B Pride 9124 of McCumber. **This ET bull could be a real sleeper.** His flush sisters are some of the top females in the replacement pen.





From left: Maternal grand dam and Maternal brother of Lot 71.

Lot:

71 McCumber 383 Tradition 7101

Calved	Reg. #	Ind. Record	
2/4/07	15813151	BW	71
		WW	594
		205	553
		WR	100
		ADG	3.34
		YW	1,058
		365	1,087
		YR	100
		IMF	3.54/100
		REA	10.3/100
		FAT	0.28/100

Leachman Right Time	N Bar Emulation EXT
McCumber Tradition 383	Leachman Erica 0025
Lassie 7015 of McCumber	McCumber 124 Traveler 212
	Lassie 648 of McCumber
	McCumber 124 Traveler 212
McCumber Foundation 701	Miss Wix 235 of McCumber
Lassie 913 of McCumber	Papa Equator 2928
Lassie 587 of McCumber	Lassie 648 of McCumber

EPDs											Dam's Prod.		
BW	WW	YW	Milk	SC	IMF	REA	Fat	\$W	\$B	BW	WW	YW	
+4.8	+32	+70	+22	+53	-06	+14	+033	14.37	17.57	7/101	7/103	7/105	

Selling 2/3 interest and full possession – This herd bull prospect has style, stoutness, meat and muscle. 7101 is a moderate framed, deep bodied, beef bull by McCumber Tradition 383. He was ratioed in his own contemporary due to the fact that his dam was injured this summer. **He has really done well this winter and is phenotypically one of the most appealing bulls in the pen.** His dam was one of the top McCumber Foundation daughters on the ranch and has produced 6 progeny selling through our sales for an average of \$4200. Some of her top progeny include the \$7000 feature of our 2004 bull sale to Clark Angus in GA, herd bulls to Rick Slabaugh, Joe Bohl and Larry Kraft in ND and also a \$6250 feature of our 2007 sale to Joel Wilson in IA. Her only daughter sold to Bear-tooth Ranch in MT as a feature of our 2003 cow sale. **Not only have her progeny demanded top dollar, but beyond that she never missed settling by AI and was a problem free, low maintenance cow.** She descends from the same cows that produced McCumber Tradition 383, which makes this bull line bred to the Lassie cow family and even more intriguing in my opinion. **This bull had a rough summer so don't hold that against him. He has developed into a top herd bull prospect.**



Grand Dam of Lot 72

Lot:

72 McCumber 004 Traveler 746

Calved	Reg. #	Ind. Record	
1/26/07	15813258	BW	73
		WW	648
		205	607
		WR	90
		ADG	3.51
		YW	1,136
		365	1,169
		YR	95
		IMF	4.43/108
		REA	11/89
		FAT	0.28/88

Sitz Traveler 8180	GDAR Traveler 71
SAV 8180 Traveler 004	Sitz Everelda Entense 1137
Boyd Forever Lady 8003	AAR New Trend
	SVF Forever Lady 57D
	N Bar Emulation EXT
Leachman Right Time	Leachman Erica 0025
Rosetta 340 of McCumber	McCumber 124 Traveler 212
Rosetta 541 of McCumber	Rosetta 812 of McCumber

EPDs											Dam's Prod.		
BW	WW	YW	Milk	SC	IMF	REA	Fat	\$W	\$B	BW	WW	YW	
0.7	41	+82	17		-05	+19	+020	24.17	26.7	3/86	3/86	2/94	

Recommended for use on heifers – A rare calving ease prospect by 004. 746 is a deep bodied, well made bull, with thickness and excellent foot and leg structure. His dam is an easy fleshing, absolutely perfect uddered daughter of Right Time. She maintains outstanding condition year round and settles by AI consistently. 746 is one of the higher IMF sons of 004 with a IMF of 4.43 to ratio 108.

Lot 071 - Maternal Production Record

	BW	WW	YW	IMF	REA	Pathfinder
Lassie 913	7/101	7/103	7/105			
Lassie 587	4/102	4/111	4/106			X
Lassie 648	10/102	10/106	9/106			X
Lassie 648 is the Grand Dam of Tradition 383						
Lassie 252	10/100	10/103	10/102			

Lot:

73 McCumber 383 Tradition 785

Calved 2/1/07 Reg. # 15813282

Ind. Record	
BW	100
WW	662
205	631
WR	93
ADG	4
YW	1,218
365	1,271
YR	103
IMF	5.28/129
REA	12.2/99
FAT	0.61/191

Leachman Right Time
McCumber Tradition 383
 Lassie 7015 of McCumber

N Bar Emulation EXT
 Leachman Erica 0025
 McCumber 124 Traveler 212
 Lassie 648 of McCumber

BT New Trend 172K
Miss Wix 3003 of McCumber
 Miss Wix 705 of McCumber

AAR New Trend
 BT Everelda Entense 57D
 McCumber 124 Traveler 212
 Miss Wix 235 of McCumber

EPDs										Dam's Prod.		
BW	WW	YW	Milk	SC	IMF	REA	Fat	\$W	\$B	BW	WW	YW
5.6	25	1+58	22		1+.29	1+.07	1+.048	10.59	21.63	3/107	3/96	3/96

785 is a big, stout, bull by McCumber Tradition 383. This 4 lb/day gainer has a tremendous amount of rib and is thick from front to rear. He recorded one of the top IMF scores with an IMF of 5.28 to ratio 128. His dam is a moderate framed, easy fleshing, extremely fertile daughter of BT New Trend 172k. She has never missed by AI and maintains her condition all year. Her dam is the powerful flush sister to McCumber Foundation 701. This bull is backed by some outstanding cows.



Maternal Grand Dam of Lot 73



Dam and Grand Dam of Lot 75

Lot:

75 McCumber 4X13 Extra 740

Calved 1/25/07 Reg. # 15813256

Ind. Record	
BW	80
WW	650
205	669
WR	99
ADG	3.6
YW	1,150
365	1,245
YR	101
IMF	3.6/88
REA	11.5/93
FAT	0.36/113

N Bar Emulation EXT
Sinclair Extra 4X13
 N Bar Lady Ida SCC 2P37

Emulation N Bar 5522
 N Bar Primrose 2424
 N Bar Prime Time D806
 N Bar Lady Ida F1080

Leachman Right Time
Lassie 521 of McCumber
 Lassie 974 of McCumber

N Bar Emulation EXT
 Leachman Erica 0025
 McCumber Foundation 701
 Lassie 272 of McCumber

EPDs										Dam's Prod.		
BW	WW	YW	Milk	SC	IMF	REA	Fat	\$W	\$B	BW	WW	YW
0.8	35	1+72	21		1+.16	1+.05	1+.035	24.18	26.42	1/96	1/99	1/101

Selling 2/3 interest and full possession- Recommended for use on heifers – Smooth made, deep bodied and long best describes this calving ease herd bull prospect. 740 started with only an 80 lb. birth weight and weaned off his dam with a 205 day weight of 670 lbs. His dam is an excellent young daughter of Right Time and a daughter of Lassie 974 of McCumber. Lassie 521 of McCumber is a high volume, easy fleshing cow with a flawless udder and a moderate frame. She has settled first service AI on her first two calves and has maintained her condition very well. **740 is a calving ease bull with the bred in ability to sire outstanding females that will succeed in any environment.** This bull has an impeccable pedigree and traces to some of the breed's great sires.

Lot:

74 McCumber 513 Traveler 759

Calved 1/29/07 Reg. # 15825120

Ind. Record	
BW	95
WW	628
205	577
WR	85
ADG	4.19
YW	1,210
365	1,247
YR	101
IMF	5.01/122
REA	11.3/92
FAT	0.31/97

SAV 8180 Traveler 004
McCumber 004 Traveler 513
 Miss Wix 301 of McCumber

Sitz Traveler 8180
 Boyd Forever Lady 8003
 Leachman Right Time
 Miss Wix 1119 of McCumber

McCumber Foundation 701
Miss Wix 193 of McCumber
 Miss Wix 5124 of McCumber

McCumber 124 Traveler 212
 Miss Wix 235 of McCumber
 McCumber Stretch 604
 Miss Wix 256 of McCumber

EPDs										Dam's Prod.		
BW	WW	YW	Milk	SC	IMF	REA	Fat	\$W	\$B	BW	WW	YW
3.5	29	1+65	17		1+.15	1+.11	1+.008	14.95	26.57	5/104	5/94	5/99

759 is the 2nd top gaining bull on test. He is a big middled, moderate framed son of McCumber 004 Traveler 513. 759 earned a 365 day weight of nearly 1250 lbs. and recorded an IMF of 5.01 to ratio 122. He dam is an extremely fertile, easy fleshing, moderate framed daughter of McCumber Foundation 701. Miss Wix 193 of McCumber that has never missed AI and goes about her business on a yearly basis.



Lot:

76 McCumber Timberwolf 7139

Calved	Reg. #	Ind. Record		
2/11/07	15813182	BW	77	
		WW	628	
		205	675	
		WR	100	
		ADG	3.25	
		YW	1,080	
		365	1,195	
		YR	97	
		IMF	3.85/94	
		REA	12.2/99	
		FAT	0.26/81	

Wulffs Ext 6106	N Bar Emulation EXT
LT Timberwolf 5014	Wulffs Erica Dianna C116
L T Ethelda 3245	Sitz Value 7097
	L T Ethelda 9012
McCumber 8113 Equator 1190	McCumber 6122 Equator 8113
Miss Wix 477 of McCumber	B Pride 7159 of McCumber
Miss Wix 2024 HC McCumber	Sitz Traveler 5556
	Miss Wix 7111 of McCumber

EPDs										Dam's Prod.		
BW	WW	YW	Milk	SC	IMF	REA	Fat	\$W	\$B	BW	WW	YW
1+2.3	1+4.7	1+8.3	1+2.5		1+.01	1+.17	1+.007	28.44	30.18	1/103	1/111	1/111

Recommended for use on heifers - 7139 is a thick made, moderate framed son of LT Timberwolf 5014. He is a twin to a heifer and both calves were raised by their mother. He still managed to wean off his dam at 628 lbs. His dam has been amazing. After weaning her first calf with a WWR of 111 she settled AI, raised this bull and his sister and has calved this spring to her first service AI date. She is extremely fertile and is a member of the Miss Wix cow family.

Lot:

77 McCumber 4X13 Extra 741

Calved	Reg. #	Ind. Record		
1/25/07	15813257	BW	98	
		WW	606	
		205	553	
		WR	100	
		ADG	3.71	
		YW	1,122	
		365	1,147	
		YR	100	
		IMF	5.13/100	
		REA	10.6/100	
		FAT	0.36/100	

N Bar Emulation EXT	Emulation N Bar 5522
Sinclair Extra 4X13	N Bar Primrose 2424
N Bar Lady Ida SCC 2P37	N Bar Prime Time D806
	N Bar Lady Ida F1080
McCumber Foundation 701	McCumber 124 Traveler 212
GKAF Miss Wix 029	Miss Wix 235 of McCumber
Miss Wix 575 of McCumber	HBR Rito Bravo 1441
	Miss Wix 04 of McCumber

EPDs										Dam's Prod.		
BW	WW	YW	Milk	SC	IMF	REA	Fat	\$W	\$B	BW	WW	YW
1+2.4	1+3.6	1+7.2	1+2.0	1-.14	1+.20	1+.10	1+.035	21.95	28.35	5/110	5/99	4/107

What a cow maker this bull should be. 741 is deep bodied, thick made and moderate framed. He was in his own contemporary group because he was extremely sick as a calf. He has recovered nicely and should sire thick made, good doing offspring. His dam is a high volume, tremendously easy fleshing daughter of McCumber Foundation 701. Her only other son sold to Bar V Ranch in ND through our 2007 bull sale.

Maternal brother of Lot 77



Lot:

78 McCumber 990 Fmdation 7043

Calved	Reg. #	Ind. Record		
2/26/07	15858061	BW	84	
		WW	707	
		205	745	
		WR	102	
		ADG	2.83	
		YW	1,100	
		365	1,198	
		YR	101	
		IMF	3.08/91	
		REA	11.6/99	
		FAT	0.22/76	

McCumber Foundation 701	McCumber 124 Traveler 212
McCumber 701 Foundation 990	Miss Wix 235 of McCumber
Lady Barbola 684 McCumber	GDAR Gold Nugget 766
	GDAR Lady Barbola 4186
S Right Time 205	Leachman Right Time
Blackcap 4203 of McCumber	S Elcona 076
Blackcap 258 of McCumber	McCumber Dakota 9023
	Blackcap 9128 of McCumber

EPDs										Dam's Prod.		
BW	WW	YW	Milk	SC	IMF	REA	Fat	\$W	\$B	BW	WW	YW
1+1.9	1+3.3	1+6.6	1+1.9		1-.06	1-.05	1+.011	21.8	16.65	1/94	1/102	1/101

Recommended for use on heifers- 7043 is a moderate framed, heavy muscled beef bull. He earned a 205 day weight of 745 lbs. to ratio 102. Along with this he possesses a tremendous amount of capacity and moves out free and easy. His dam is an easy fleshing, moderate framed, grand daughter of Right Time and has an absolutely perfect uddered. This bull is sired by an outstanding son of McCumber 054 Rito 5009, who is the outstanding son of Miss Wix 365 that topped our sale in 1996. Not only should 7043 be a calving ease bull, but he should also sire early growth and outstanding females.

Lot:

79 McCumber 4X13 Extra 784

Calved	Reg. #	Ind. Record		
2/1/07	15813281	BW	86	
		WW	600	
		205	634	
		WR	94	
		ADG	3.64	
		YW	1,106	
		365	1,216	
		YR	99	
		IMF	4.46/109	
		REA	12.6/102	
		FAT	0.34/106	

N Bar Emulation EXT	Emulation N Bar 5522
Sinclair Extra 4X13	N Bar Primrose 2424
N Bar Lady Ida SCC 2P37	N Bar Prime Time D806
	N Bar Lady Ida F1080
Vermilion Dateline 7078	Connealy Dateline
Miss Wix 5018 of McCumber	Vermilion Blackbird 5044
Miss Wix 9007 of McCumber	Tehama Bando 155
	Miss Wix 365 of McCumber

EPDs										Dam's Prod.		
BW	WW	YW	Milk	SC	IMF	REA	Fat	\$W	\$B	BW	WW	YW
2.1	40	1+80	20		1+.26	1+.30	1+.018	23.41	38.37	1/103	1/94	1/99

Recommended for use on larger framed heifers - 784 is another long bodied, smooth made son of Sinclair Extra 4x13. He performed very well on test and earned a 365 day weight over 1200 lbs. To go along with this he scanned very well with an IMF of 4.46 to ratio 109 and a REA of 12.6 to ratio 102. 784 is a big topped, thick quartered bull who moves extremely free and easy as he travels and puts a foot down in all four corners. His dam is a stout made, deep bodied, perfect uddered, easy fleshing daughter of VRD and is a daughter of the full sister to McCumber Classic 202 that sold privately to Oak Hill Angus in VA. The flush sister to Miss Wix 5018 of McCumber sold to L&W Angus in TX for \$3500 through our 2006 cow sale.



Lot:

80 McCumber 551 T Value 7111

Calved	Reg. #	Ind. Record	
2/5/07	15849799	BW	98
		WW	630
		205	607
		WR	90
		ADG	3.24
		YW	1,080
		365	1,125
		YR	92
		IMF	3.39/83
		REA	12.4/101
		FAT	0.15/47

McCumber 7111 Total Value
McCumber Total Value 551
 B Pride 9124 of McCumber

Vermilion Dateline 7078
 Miss Wix 7111 of McCumber
 Sitz Traveler 9929
 B Pride 839 of McCumber

McCumber Foundation 701
Blackcap 3021 of McCumber
 Papa Blackcap 9854

McCumber 124 Traveler 212
 Miss Wix 235 of McCumber
 Papa Rito T Intense DHD 6844
 Papa Blackcap 7813

EPDs											Dam's Prod.		
BW	WW	YW	Milk	SC	IMF	REA	Fat	\$W	\$B		BW	WW	YW
4	26	1+49	25		1-.03	1+.20	1-.014	18.4	11.35		3/107	3/104	3/100

7111 is a real chunk by McCumber Total Value 551. He is thick and deep with extra expression to his rump and lower quarter. 7111 is moderate framed and outstanding on his feet and legs. His visual muscle is confirmed by the fact that he earned a REA/CWT of 1.15. His dam is an extremely fertile daughter of McCumber Foundation 701 and has never missed settling AI.

Lot:

81 McCumber 383 Tradition 7129

Calved	Reg. #	Ind. Record	
2/9/07	15813173	BW	105
		WW	680
		205	661
		WR	98
		ADG	3.42
		YW	1,156
		365	1,208
		YR	99
		IMF	3.92/96
		REA	11.4/93
		FAT	0.27/84

Leachman Right Time
McCumber Tradition 383
 Lassie 7015 of McCumber

N Bar Emulation EXT
 Leachman Erica 0025
 McCumber 124 Traveler 212
 Lassie 648 of McCumber

BT New Trend 172K
Blackcap 3143 of McCumber
 Blackcap 543 of McCumber

AAR New Trend
 BT Everelda Entense 57D
 McCumber Rito 0054
 Blackcap 282 of McCumber

EPDs											Dam's Prod.		
BW	WW	YW	Milk	SC	IMF	REA	Fat	\$W	\$B		BW	WW	YW
6.4	29	1+57	24		1+.02	1+.02	1+.008	12.49	15.59		3/112	3/106	3/105

7129 is a super stout, big quartered son of McCumber Tradition 383. His Pathfinder dam is a moderate framed, excellent uddered daughter of BT New Trend 172K. She has produced one son that sold to Bill Striefel through our 2006 bull sale for \$3000. This bull has a little bit more birth weight, but put him on your cows and you will get along just fine.



Lot:

82 McCumber 4X13 Extra 7030

Calved	Reg. #	Ind. Record	
3/15/07	15813143	BW	71
		WW	600
		205	636
		WR	100
		ADG	3.01
		YW	1,018
		365	1,118
		YR	100
		IMF	3.88/97
		REA	11.2/90
		FAT	0.37/119

N Bar Emulation EXT
Sinclair Extra 4X13
 N Bar Lady Ida SCC 2P37

Emulation N Bar 5522
 N Bar Primrose 2424
 N Bar Prime Time D806
 N Bar Lady Ida F1080

Leachman Right Time
Miss Wix 2022 HC McCumber
 Miss Wix 7111 of McCumber

N Bar Emulation EXT
 Leachman Erica 0025
 GDAR Traveler 71
 Miss Wix 365 of McCumber

EPDs											Dam's Prod.		
BW	WW	YW	Milk	SC	IMF	REA	Fat	\$W	\$B		BW	WW	YW
1-.1	1+42	1+75	1+25	1+0	1+.23	1+.08	1+.034	30.34	30.75		4/95	4/105	3/105

Selling 2/3 interest and full possession- Recommended for use on heifers- 7030 is one of the youngest bulls in this sale. He is a flush brother to the herd sire prospect selling as Lot 8. He is really starting to come on. 7030 is moderate framed, deep bodied, naturally thick from front to rear and has excellent testicular development. His dam is the outstanding Miss Wix 2022 of McCumber. He has the bred in ability to sire outstanding females. He should be a sure thing on calving ease and has the body type to cover big country and maintain his body condition with ease.



Dam of Lot 82

Lot:

83 McCumber 536P Ext 7136

Calved	Reg. #	Ind. Record	
2/10/07	15813180	BW	105
		WW	670
		205	653
		WR	96
		ADG	3.42
		YW	1,146
		365	1,200
		YR	97
		IMF	3.48/85
		REA	11.2/91
		FAT	0.29/91

N Bar Emulation EXT
Sitz JLS Emulation Ext 536P
 Ideal 4465 of 6807 4286

Emulation N Bar 5522
 N Bar Primrose 2424
 DHD Traveler 6807
 E E 4286 of Ideal 2240 1254

BT New Trend 172K
Rosetta 376 of McCumber
 Rosetta 849 of McCumber

AAR New Trend
 BT Everelda Entense 57D
 GDAR Band 477
 Rosetta 541 of McCumber

EPDs											Dam's Prod.		
BW	WW	YW	Milk	SC	IMF	REA	Fat	\$W	\$B		BW	WW	YW
5.8	34	1+64	26		1-.05	1+.05	1+.008	16.4	17.24		3/104	3/99	3/98

7136 is a masculine, smooth made, long bodied son of Sitz JLS Emulation EXT 536P. His dam has produced two other sons selling through our bull sale to Ben Walter and Daniel Eckroth in ND.

Lot:

84 McCumber 3108 VRD 7208

Calved 3/25/07 Reg. # 15813237

Ind. Record	
BW	97
WW	610
205	690
WR	102
ADG	
YW	1,106
365	
YR	
IMF	3.13/77
REA	12/98
FAT	0.24/75

Vermilion Dateline 7078
McCumber 7078 VRD 3108
 Lassie 974 of McCumber

Connealy Dateline
 Vermilion Blackbird 5044
 McCumber Foundation 701
 Lassie 272 of McCumber

BT New Trend 172K
Miss Wix 359 of McCumber
 GKAF Miss Wix 029

AAR New Trend
 BT Everelda Entense 57D
 McCumber Foundation 701
 Miss Wix 575 of McCumber

EPDs										Dam's Prod.		
BW	WW	YW	Milk	SC	IMF	REA	Fat	\$W	\$B	BW	WW	YW
5.8	33	71	25		1-.15	1+.25	1-.009	13.33	20.33	3/114	3/104	2/110

This end of March born bull is a big, long, stout son of McCumber 7078 VRD 3108. He earned a 205 day weight of nearly 700 lbs. to ratio 102 and gained above the average of the pen to weigh off test at more than 1100 lbs. over 50 days before his 1st birthday. Expect him to sire high performance, heavy muscled steers that will grow and gain with the best of them.



Dam and flush brother of Lot 85

Lot:

85 McCumber Ext 7002

Calved 2/14/07 Reg. # 15815385

Ind. Record	
BW	94
WW	716
205	686
WR	100
ADG	2.99
YW	1,132
365	1,164
YR	100
IMF	3.67/91
REA	12.4/100
FAT	0.36/116

Emulation N Bar 5522
N Bar Emulation EXT
 N Bar Primrose 2424

Emulation 31
 Ankony 8F78 Lass 8F275
 Emulation 31
 Primrose N Bar 9962

Rito 054 GDAR
Miss Wix 5007 of McCumber
 Miss Wix 365 of McCumber

CSU Rito 4114
 Blackcap Forever 485 GDAR
 Shoshone 247 PJM
 Miss Wix 294 of McCumber

EPDs										Dam's Prod.		
BW	WW	YW	Milk	SC	IMF	REA	Fat	\$W	\$B	BW	WW	YW
1+1.9	1+29	1+59	1+19	1+.17	1+.02	1+.31	1+.029	20.1	17.26	4/98	4/101	4/102

Selling 2/3 interest and full possession- Recommended for use on heifers- 7002 is another outstanding member of the flush of EXT brothers that produced the herd bull selling as Lot 12 through this sale. He resembles his brother very well, possessing length, smoothness and a large top. Two flush brothers sold through last year's sale to producers in NE and KS.



Flush Brother to Lot 86

Lot:

86 McCumber 004 Traveler 7012

Calved 3/7/07 Reg. # 15813134

Ind. Record	
BW	98
WW	616
205	632
WR	100
ADG	3.54
YW	1,108
365	1,198
YR	100
IMF	3.02/75
REA	12/97
FAT	0.26/84

Sitz Traveler 8180
SAV 8180 Traveler 004
 Boyd Forever Lady 8003

GDAR Traveler 71
 Sitz Everelda Entense 1137
 AAR New Trend
 SVF Forever Lady 57D

Sitz Traveler 9929
B Pride 9124 of McCumber
 B Pride 839 of McCumber

DHD Traveler 6807
 Sitz Everelda Entense 1137
 PJM Power 291
 B Pride 134 of McCumber

EPDs										Dam's Prod.		
BW	WW	YW	Milk	SC	IMF	REA	Fat	\$W	\$B	BW	WW	YW
1+3.8	1+44	1+80	1+22	1+.39	1-.15	1+.20	1+.002	22.75	24.37	7/101	7/106	5/104

Selling 2/3 interest and full possession- 7012 is a member of the flush sired by 004 and out of the outstanding Pathfinder cow B Pride 9124 of McCumber. Put all or a couple of these brothers together for a consistent, look alike calf crop.

Lot:

87 McCumber 513 Traveler 7042

Calved 2/14/07 Reg. # 15860529

Ind. Record	
BW	92
WW	700
205	712
WR	98
ADG	3.05
YW	1,124
365	1,200
YR	101
IMF	3.28/96
REA	12.2/104
FAT	0.32/110

SAV 8180 Traveler 004
McCumber 004 Traveler 513
 Miss Wix 301 of McCumber

Sitz Traveler 8180
 Boyd Forever Lady 8003
 Leachman Right Time
 Miss Wix 1119 of McCumber

BT New Trend 172K
Lassie 4194 of McCumber
 Lassie 0171 of McCumber

AAR New Trend
 BT Everelda Entense 57D
 McCumber Foundation 701
 Lassie 272 of McCumber

EPDs										Dam's Prod.		
BW	WW	YW	Milk	SC	IMF	REA	Fat	\$W	\$B	BW	WW	YW
1+2.9	1+34	1+69	1+24		1-.05	1+.22	1+.008	20.98	21.49	2/100	2/97	2/101

7042 is a deep ribbed, long bodied son of McCumber 004 Traveler 513. His dam is a member of the Lassie cow family and his grand dam is full sister to Lassie 974 of McCumber.

Lot:

88 McCumber 3108 VRD 7170

Calved 2/25/07	Reg. # 15813209	Ind. Record	
Vermilion Dateline 7078 McCumber 7078 VRD 3108 Lassie 974 of McCumber		BW	90
BT New Trend 172K Miss Wix 4162 of McCumber Miss Wix 1101 of McCumber		WW	580
Connealy Dateline Vermilion Blackbird 5044 McCumber Foundation 701 Lassie 272 of McCumber		205	617
AAR New Trend BT Everelda Entense 57D McCumber Powertrain HC 1025 Miss Wix 6101 of McCumber		WR	91
		ADG	3.6
		YW	1,080
		365	1,193
		YR	97
		IMF	3.64/89
		REA	12.6/102
		FAT	0.29/91

EPDs										Dam's Prod.		
BW	WW	YW	Milk	SC	IMF	REA	Fat	\$W	\$B	BW	WW	YW
5.2	34	1+71	24		1-.02	1+.28	1+0	15.23	25.23	2/100	2/96	2/100

7170 is an attractive patterned, high gaining son of McCumber 7078 VRD 3108. He is big topped, long bodied and excellent on his feet and legs, to go along with this his muscle expression is confirmed by the fact that he scanned a REA of 12.6 to ratio 102. His dam comes from a long line of top producing cows, which includes 4 consecutive generations of Pathfinders.

Lot:

89 McCumber 4X13 Extra 7134

Calved 2/10/07	Reg. # 15813178	Ind. Record	
N Bar Emulation EXT Sinclair Extra 4X13 N Bar Lady Ida SCC 2P37		BW	73
Leachman Right Time Miss Wix 5141 of McCumber Miss Wix 7007 of McCumber		WW	556
Emulation N Bar 5522 N Bar Primrose 2424 N Bar Prime Time D806 N Bar Lady Ida F1080		205	605
N Bar Emulation EXT Leachman Erica 0025 McCumber 124 Traveler 212 Miss Wix 030 of McCumber		WR	89
		ADG	3.32
		YW	1,018
		365	1,136
		YR	92
		IMF	3.88/95
		REA	12.5/102
		FAT	0.31/97

EPDs										Dam's Prod.		
BW	WW	YW	Milk	SC	IMF	REA	Fat	\$W	\$B	BW	WW	YW
-0.3	34	1+67	20		1+.23	1+.10	1+.036	25.62	26.95	1/89	1/89	1/92

Selling 2/3 interest and full possession- Recommended for use on heifers- 7134 is a royally bred bull that has developed into a moderate framed, heavy muscled, super sound calving ease prospect. He is an extremely light birth bull who scanned a large REA of 12.5 to ratio 102 especially considering his moderate size. His REA/CWT is 1.23 square inches per 100 lbs. of body weight. His dam is a moderate framed, easy fleshing perfect uddered daughter of Leachman Right Time 2700 and a maternal sister to the herd sire McCumber Total Value 449. Two full brothers to the dam sold through our 2006 bull sale to Rick Mc Conville and Steve Whipple both in NE. Her flush sister sold to 12 Star Angus Ranch in LA for \$6250 through our 2006 cow sale. 7134 has a super pedigree and would I expect him to be a sure thing in the calving ease department.

Lot:

90 McCumber 449 T Value 761

Calved 1/29/07	Reg. # 15813267	Ind. Record	
McCumber 7111 Total Value McCumber Total Value 449 Miss Wix 7007 of McCumber		BW	81
McCumber New Trend 1206 B Pride 5183 of McCumber B Pride 275 of McCumber		WW	610
Vermilion Dateline 7078 Miss Wix 7111 of McCumber McCumber 124 Traveler 212 Miss Wix 030 of McCumber		205	639
AAR New Trend Miss Wix 705 of McCumber Pine Creek Right Time 1147 B Pride 0103 of McCumber		WR	94
		ADG	2.91
		YW	1,014
		365	1,105
		YR	90
		IMF	4.57/112
		REA	11.8/96
		FAT	0.25/78

EPDs										Dam's Prod.		
BW	WW	YW	Milk	SC	IMF	REA	Fat	\$W	\$B	BW	WW	YW
1.7	25	1+47	24		1+.03	1+.02	1+.012	22.78	8.33	1/97	1/94	1/90

Recommended for use on heifers- 761 is a heavy muscled calving ease prospect with a lot of shape to his top and extra width and expression to his rear quarter. He scanned very well for IMF with an IMF of 4.57 to ratio 112. His dam is a high volume, perfect uddered daughter of McCumber New Trend 1206 and is currently nursing an outstanding bull calf by McCumber 004 Traveler 6120.



Above: Flush brother to dam, McCumber 2700 RT Time 5166

Below: Flush sister to dam (Miss Wix 5003 of McCumber)





Lot: **91** **McCumber 536P Ext 7177**

Calved 2/28/07 Reg. # 15813216

N Bar Emulation EXT
Sitz JLS Emulation Ext 536P
Ideal 4465 of 6807 4286

McCumber New Trend 1206
Rostta 4149 of McCumber
Rosetta 1112 of McCumber

Emulation N Bar 5522
N Bar Primrose 2424
DHD Traveler 6807
E E 4286 of Ideal 2240 1254
AAR New Trend
Miss Wix 705 of McCumber
McCumber Powertrain HC 1025
Rosetta 541 of McCumber

Ind. Record	
BW	97
WW	582
205	625
WR	92
ADG	3.14
YW	1,018
365	1,127
YR	92
IMF	3.86/94
REA	11.9/97
FAT	0.31/97

EPDs										Dam's Prod.		
BW	WW	YW	Milk	SC	IMF	REA	Fat	\$W	\$B	BW	WW	YW
5.3	28	I+55	22		I+.01	I+.12	I+.012	14.41	14.24	2/105	2/98	2/96

Depth, dimension and stoutness best describes this moderate framed, tank by Sitz JLS Emulation EXT 536P. Along with this 7177 is a free moving, wide tracking bull with excellent feet and legs. His dam is a powerful daughter of 1206 and maintains her condition very well.

Lot: **92** **McCumber 536P Ext 7182**

Calved 3/2/07 Reg. # 15813220

N Bar Emulation EXT
Sitz JLS Emulation Ext 536P
Ideal 4465 of 6807 4286

Vermilion Dateline 7078
Lovely Lady 482 of McCumber
Lovely Lady 0208 McCumber

Emulation N Bar 5522
N Bar Primrose 2424
DHD Traveler 6807
E E 4286 of Ideal 2240 1254
Connealy Dateline
Vermilion Blackbird 5044
McCumber 6122 Equator 8113
Lovely Lady 721 of McCumber

Ind. Record	
BW	84
WW	554
205	600
WR	89
ADG	3.34
YW	1,018
365	1,134
YR	92
IMF	3.66/89
REA	11.5/93
FAT	0.26/81

EPDs										Dam's Prod.		
BW	WW	YW	Milk	SC	IMF	REA	Fat	\$W	\$B	BW	WW	YW
3.3	37	I+78	22		I-.03	I+.23	I+0	19.49	27.77	2/94	2/105	2/103

7182 is a long bodied, smooth made bull, with a big top and excellent body depth. His dam produced one other bull selling to C.S. Fitzgerald in VA for \$5000 in last year's bull sale.

Lot: **93** **McCumber 449 T Value 738**

Calved 1/24/07 Reg. # 15813254

McCumber 7111 Total Value
McCumber Total Value 449
Miss Wix 7007 of McCumber

McCumber New Trend 1206
Miss Wix 5176 of McCumber
Miss Wix 049 of McCumber

Vermilion Dateline 7078
Miss Wix 7111 of McCumber
McCumber 124 Traveler 212
Miss Wix 030 of McCumber

AAR New Trend
Miss Wix 705 of McCumber
McCumber 71 Traveler 7114
Miss Wix 8161 of McCumber

Ind. Record	
BW	92
WW	604
205	628
WR	93
ADG	2.88
YW	1,004
365	1,089
YR	89
IMF	2.99/73
REA	11.2/91
FAT	0.25/78

EPDs										Dam's Prod.		
BW	WW	YW	Milk	SC	IMF	REA	Fat	\$W	\$B	BW	WW	YW
4.2	21	I+39	24		I-.11	I+.02	I+.009	16.44	-3.57	1/110	1/93	1/89

738 is a super thick, heavy muscled son of McCumber Total Value 449.

Lot: **94** **McCumber 536P Ext 7193**

Calved 3/8/07 Reg. # 15813230

N Bar Emulation EXT
Sitz JLS Emulation Ext 536P
Ideal 4465 of 6807 4286

McCumber 054 Rito 5009
Lassie 089 of McCumber
Lassie 628 of McCumber

Emulation N Bar 5522
N Bar Primrose 2424
DHD Traveler 6807
E E 4286 of Ideal 2240 1254

Rito 054 GDAR
Miss Wix 365 of McCumber
GDAR Gold Nugget 766
Lassie 462 of McCumber

Ind. Record	
BW	97
WW	606
205	624
WR	92
ADG	3.04
YW	1,028
365	1,110
YR	90
IMF	3.56/87
REA	11.5/93
FAT	0.31/97

EPDs										Dam's Prod.		
BW	WW	YW	Milk	SC	IMF	REA	Fat	\$W	\$B	BW	WW	YW
4.2	33	I+63	20		I-.03	I+0	I+.010	18.11	16.85	6/104	6/100	5/97

7193 is a wide load by 536P. He is wide based, big ribbed and possesses extra width and dimension to his rear quarter. His dam is an outstanding producer by McCumber 054 Rito 5009 and a member of the Lassie cow family. She has produced two sons that have sold through our bull sale to the Yuly Ranch and Dennis Walsh in ND.



Maternal Brother of Lot 92



Maternal brother of Lot 95

Lot:

95 **McCumber Tradition 7041**

Calved 2/10/07 Reg. # 15860528

Leachman Right Time
McCumber Tradition 383
 Lassie 7015 of McCumber

McCumber 8113 Equator 1190
Blackcap 4120 of McCumber
 Blackcap 9128 of McCumber

N Bar Emulation EXT
 Leachman Erica 0025
 McCumber 124 Traveler 212
 Lassie 648 of McCumber

McCumber 6122 Equator 8113
 B Pride 7159 of McCumber
 Mr Wix of McCumber 204
 Blackcap 306 of McCumber

Ind. Record	
BW	88
WW	670
205	676
WR	93
ADG	2.56
YW	1,026
365	1,086
YR	92
IMF	3.51/103
REA	10.4/89
FAT	0.28/97

EPDs										Dam's Prod.		
BW	WW	YW	Milk	SC	IMF	REA	Fat	\$W	\$B	BW	WW	YW
I+4.2	I+31	I+63	I+21	I+.32	I+.07	I+.03	I+.028	16.92	19.06	2/99	2/98	2/99

7041 is a super patterned, smooth made bull that is outstanding on his feet and legs. His dam has produced one son selling through our 2006 bull sale to Strelow Angus Ranch in ND for \$4750.

Lot:

96 **McCumber 383 Tradition 734**

Calved 1/24/07 Reg. # 15813252

Leachman Right Time
McCumber Tradition 383
 Lassie 7015 of McCumber

Tehama Bando 155
Miss Wix 201 of McCumber
 Miss Wix 365 of McCumber

N Bar Emulation EXT
 Leachman Erica 0025
 McCumber 124 Traveler 212
 Lassie 648 of McCumber

Band 234 of Ideal 3163
 Tehama Blackcap G373
 Shoshone 247 PJM
 Miss Wix 294 of McCumber

Ind. Record	
BW	96
WW	580
205	528
WR	78
ADG	3.32
YW	1,042
365	1,059
YR	86
IMF	3.21/78
REA	11.3/92
FAT	0.2/63

EPDs										Dam's Prod.		
BW	WW	YW	Milk	SC	IMF	REA	Fat	\$W	\$B	BW	WW	YW
3.5	17	I+46	18	I+.24	I-.06	I+.04	I-.006	11.16	5.51	4/99	4/94	4/97

734 is a moderate framed, deep bodied, naturally thick son of McCumber Tradition 383.

Lot:

97 **McCumber 513 Traveler 7108**

Calved 2/5/07 Reg. # 15825114

SAV 8180 Traveler 004
McCumber 004 Traveler 513
 Miss Wix 301 of McCumber

Sitz Traveler 8180
 Boyd Forever Lady 8003
 Leachman Right Time
 Miss Wix 1119 of McCumber

McCumber Foundation 701
B Pride VJR 1130 McCumber
 B Pride 287 of McCumber

McCumber 124 Traveler 212
 Miss Wix 235 of McCumber
 054 PJM 1438
 B Pride 4103 of McCumber

Ind. Record	
BW	90
WW	556
205	521
WR	100
ADG	3.47
YW	1,038
365	1,076
YR	100
IMF	2.86/100
REA	11/100
FAT	0.32/100

EPDs										Dam's Prod.		
BW	WW	YW	Milk	SC	IMF	REA	Fat	\$W	\$B	BW	WW	YW
I+2.9	I+35	I+69	I+22		I-.06	I+.17	I+.030	21.09	17.8	5/106	5/102	4/103

7108 is a long bodied, high volume, sound structured son of McCumber 004 Traveler 513. His dam is a powerful daughter of McCumber Foundation 701 and maintains her condition very well.



Sire of Lots 97 and 98

Lot:

98 **McCumber 513 Traveler 767**

Calved 1/29/07 Reg. # 15825121

SAV 8180 Traveler 004
McCumber 004 Traveler 513
 Miss Wix 301 of McCumber

BT Traveler 228K
Miss Wix 5218 of McCumber
 Miss Wix 317 of McCumber

Sitz Traveler 8180
 Boyd Forever Lady 8003
 Leachman Right Time
 Miss Wix 1119 of McCumber

Sitz Traveler 9929
 BT Everelda Entense 57D
 BT New Trend 172K
 Miss Wix 0192 of McCumber

Ind. Record	
BW	60
WW	584
205	613
WR	100
ADG	3.25
YW	1,036
365	1,133
YR	100
IMF	3.48/100
REA	11.6/100
FAT	0.29/100

EPDs										Dam's Prod.		
BW	WW	YW	Milk	SC	IMF	REA	Fat	\$W	\$B	BW	WW	YW
I+1.5	I+34	I+65	I+25		I+.03	I+.22	I+.007	25.13	22.85	/	/	/

Recommended for use on heifers- Smooth shouldered, moderate framed, and deep bodied, best describes this son of McCumber 004 Traveler 513. 767 was a twin to a heifer, and both were raised by their mother. His dam is a moderate framed, very fertile member of the Miss Wix cow family.



Dam of Lot 100



Grand dam of Lot 100

Lot: **99 McCumber 455 New Day 7189**

Calved	Reg. #	Ind. Record	
3/7/07	15813226	BW	81
		WW	578
		205	657
		WR	97
		ADG	3.37
		YW	1,046
		365	1,196
		YR	97
		IMF	3.21/78
		REA	12.3/100
		FAT	0.31/97

Calved		Reg. #		AAR New Trend	
Boyd New Day 8005	McCumber 8005 New Day 455	Enchantress 086 of McCumber	Sitz Alliance 9800	Miss Wix 505 of McCumber	Miss Wix 3149 of McCumber
			Sitz Alliance 6595	Sitz Barbara Perfection 3171	BT New Trend 172K
			SVF Forever Lady 57D	Sitz SLS Rainmaker 7596	Enchantress 816 McCumber
			Miss Wix 204 of Mc Cumber	Traveler 124 G D A R	Miss Wix 365 of Mc Cumber
			KMA Highroller 5025	Highroller 9354 of RR 2300	Erica Lassie KMA 2003
			Miss Wix 352 of Mc Cumber	054 PJM 1438	Miss Wix 365 of Mc Cumber
			Miss Wix 098 of Mc Cumber		

EPDs											Dam's Prod.		
BW	WW	YW	Milk	SC	IMF	REA	Fat	\$W	\$B	BW	WW	YW	
0.8	32	1+65	28		1-.03	1+.36	1+.017	25.11	20.17	1/96	1/97	1/97	

Recommended for use on heifers- Smooth shouldered, long bodied and outstanding feet and legs best describes this Boyd New Day grandson. His dam is a moderate framed, excellent uddered daughter of the outstanding calving ease sire Sitz Alliance 9800.

Lot: **100 McCumber 8128 Dynamite7018**

Calved	Reg. #	Ind. Record	
111		BW	88
		WW	616
		205	639
		WR	100
		ADG	2.13
		YW	912
		365	980
		YR	100
		IMF	3.07/76
		REA	10.4/84
		FAT	0.25/81

EPDs											Dam's Prod.		
BW	WW	YW	Milk	SC	IMF	REA	Fat	\$W	\$B	BW	WW	YW	
3.4	39	60	25	+31	-.09	+11	-.001	26.67	14.87	7/99	7/108	5/105	

Selling 2/3 interest and full possession- 7018 is a mid-March full brother to the outstanding donor and Pathfinder cow, Miss Wix 2027 of McCumber. This ET bull is extremely well made, puts a foot down in all four corners and moves out free and easy as he travels. We fortunate enough to get 2 flush sister to this bull and they look like they will be outstanding brood cows. His dam and the cows he descends from are known for their outstanding fertility, productivity, longevity and mothering ability.

Lot 100 - Maternal Production Record

	BW	WW	YW	IMF	REA	Pathfinder
Miss Wix 352	7/99	7/108	5/104	14/97	14/99	X
Miss Wix 098	6/106	6/106	5/106	7/94	7/103	X
Miss Wix 365	10/102	10/106	7/108	12/102	12/103	X
Miss Wix 294	12/107	12/113	12/109			X
Miss Wix 682	10/105	10/112	10/111			X

Lot: **101 McCumber 536P Ext 7195**

Calved	Reg. #	Ind. Record	
3/11/07	15813232	BW	87
		WW	556
		205	597
		WR	88
		ADG	3.15
		YW	994
		365	1,101
		YR	90
		IMF	5.13/125
		REA	11.5/93
		FAT	0.28/88

EPDs											Dam's Prod.		
BW	WW	YW	Milk	SC	IMF	REA	Fat	\$W	\$B	BW	WW	YW	
2.2	25	1+49	22		1+.22	1-.10	1-.001	20.51	17.68	3/99	3/84	3/86	

Recommended for use on heifers- 7195 is an extremely well made, calving ease prospect by Sitz JLS Emulation EXT 536P. He recorded one of the top IMF scores of the sale with an IMF of 5.13 to ratio 125. Use sons of 536P to add efficiency, thickness and do ability. We expect his daughters to be outstanding brood cows that are easy fleshing, perfect uddered and have a reduced mature size.



Lot: Dam of Lot 102

102 McCumber Commercial

Calved 3/16/07 Reg. #

Ind. Record	
BW	80
WW	520
205	631
WR	100
ADG	3.42
YW	996
365	1178
YR	100
IMF	4.73/100
REA	11.7/100
FAT	0.41/100

EPDs											Dam's Prod.		
BW	WW	YW	Milk	SC	IMF	REA	Fat	\$W	\$B		BW	WW	YW

Recommended for use on heifers- Selling with out registration papers- A long, smooth calving ease prospect by BT Traveler 228K. Remember if you're going to participate in Angus Source, the bulls have to be registered and transferred to you. All registered bulls selling through this sale will be transferred to their new owners.

Lot:

103 McCumber 383 Tradition 7016

Calved 3/8/07 Reg. # 15813138

Leachman Right Time
McCumber Tradition 383
 Lassie 7015 of McCumber

Rito 054 GDAR
Miss Wix 5007 of McCumber
 Miss Wix 365 of McCumber

N Bar Emulation EXT
 Leachman Erica 0025
 McCumber 124 Traveler 212
 Lassie 648 of McCumber

CSU Rito 4114
 Blackcap Forever 485 GDAR
 Shoshone 247 PJM
 Miss Wix 294 of McCumber

Ind. Record	
BW	90
WW	528
205	543
WR	100
ADG	2.89
YW	930
365	1,005
YR	100
IMF	3.47/86
REA	10.6/85
FAT	0.26/84

EPDs											Dam's Prod.		
BW	WW	YW	Milk	SC	IMF	REA	Fat	\$W	\$B		BW	WW	YW
1+3.7	1+23	1+54	1+20	1+.41	1-.07	1+.09	1+.019	13.99	8.76		4/98	4/101	4/102

7016 is the flush brother to the herd bull prospect selling as lot 13 and the maternal brother to the outstanding flush by EXT. **A son of McCumber Tradition sired the top selling group of open heifers in the past Januarys Angus Partners Commercial Female sale.**

Lot:

104 McCumber 536P Ext 7211

Calved 4/2/07 Reg. # 15813240

N Bar Emulation EXT
Sitz JLS Emulation Ext 536P
 Ideal 4465 of 6807 4286

Emulation N Bar 5522
 N Bar Primrose 2424
 DHD Traveler 6807
 E E 4286 of Ideal 2240 1254

McCumber Foundation 701
Gale 3109 of McCumber
 Gale 6169 of McCumber

McCumber 124 Traveler 212
 Miss Wix 235 of McCumber
 McCumber 054 Rito 326
 Gale 607 of McCumber

Ind. Record	
BW	94
WW	500
205	586
WR	87
ADG	
YW	926
365	
YR	
IMF	4.71/
REA	10.2/
FAT	0.26/

EPDs											Dam's Prod.		
BW	WW	YW	Milk	SC	IMF	REA	Fat	\$W	\$B		BW	WW	YW
3.4	22	47	21		1+.12	1+.02	1+.018	15.7	11.24		3/108	3/95	1/102

7211 is a moderate framed, deep bodied son of 536P. His dam is a beautiful McCumber Foundation daughter that is moderate, easy fleshing and perfect uddered.

Lot:

105 McCumber 3108 VRD 7204

Calved 3/16/07 Reg. # 15814327

Vermilion Dateline 7078
McCumber 7078 VRD 3108
 Lassie 974 of McCumber

Connealy Dateline
 Vermilion Blackbird 5044
 McCumber Foundation 701
 Lassie 272 of McCumber

McCumber Powertrain HC 1025
B Pride 264 of McCumber
 B Pride 483 of McCumber

Papa Equator 2928
 Rosetta 048 of McCumber
 McCumber 124 Traveler 212
 B Pride 71 of McCumber

Ind. Record	
BW	92
WW	548
205	581
WR	86
ADG	3.37
YW	1,016
365	1,120
YR	91
IMF	3.24/79
REA	11.6/94
FAT	0.26/81

EPDs											Dam's Prod.		
BW	WW	YW	Milk	SC	IMF	REA	Fat	\$W	\$B		BW	WW	YW
4.8	29	1+64	21		1-.05	1+.22	1+.007	13.43	18.74		3/100	3/96	2/98

7204 is a stout made, heavy muscled son of McCumber 7078 VRD 3108. These sons sold very well in last year's sale and should add lbs., muscle and weight to a set of calves.

Lot:

106 McCumber 1206 N Trend 7212

Calved 4/5/07 Reg. # 15813241

AAR New Trend
 McCumber New Trend 1206
 Miss Wix 705 of McCumber

VDAR Shoshone 548
 Donna AAR 74
 McCumber 124 Traveler 212
 Miss Wix 235 of McCumber
 Leachman Right Time
 Sitz Everelda Entense 1137
 McCumber Foundation 701
 Gale 836 of McCumber

Ind. Record	
BW	85
WW	516
205	639
WR	94
ADG	2.86
YW	910
365	
YR	
IMF	2.9/TY
REA	10.2/TY
FAT	0.2/TY

EPDs											Dam's Prod.		
BW	WW	YW	Milk	SC	IMF	REA	Fat	\$W	\$B		BW	WW	YW
4.4	23	46	20		1+.04	1+.33	1+.006	14.21	10.93		2/98	2/94	1/97

7212 is the youngest bull in the sale, but should definitely not be overlooked. He is deep bodied, naturally thick and excellent on his feet and legs. His dam is an easy fleshing, super uddered daughter of Pine Creek Right Time 1147.

Representing
43 years of
breeding
Angus cattle.

McCumber Angus Ranch

Annual Bull Sale: March 31, 2008 at the Ranch Selling 110 Yearling Angus Bulls



Leachman Right Time
McCumber Tradition 383
Lassie 7115 of McCumber

N Bar Emulation EXT
Leachman Lassie 0325
McCumber 124 Lassie 212
Lassie 618 of McCumber

BW WW YR M IMF REA
+54 +31 +69 +30 +04 +23

Tradition sire moderate framed bulls that possess more muscle than his sire. They are long, deep bodied cattle with perfect feet and legs. The daughters of Tradition are high volume, feminine cows with excellent udders. He is an udder improver and will add muscle and capacity. Owned with Ed and Lori Williams, Heritage Angus, MS.

McCumber cattle are moderate framed, high volume animals that possess the ability to flesh easily on pasture and high roughage rations. This is a very economically important trait in today's cattle business when considering the high cost of grain supplementation. Let "McCumber" bulls help you enter the next era of efficient livestock production.



N Bar Emulation EXT
Sincier Extra 4X13
N Bar Lady Ida 900 2P37

Emulation N Bar 5527
N Bar Pennae 2401
N Bar Pennae Time 0808
N Bar Lady Ida F1000

BW WW YR M IMF REA
-14 +45 +64 +21 +53 +14

4X13 is a unique breeding bull that will put function and feed efficiency into his progeny. His first calf crop is proving him to be a calving ease specialist with above average performance and will consistently improve IMF. A large group of sons will sell March 31, 2008. Owned with Sincier Cattle Co., WY; N Bar Lure and Cattle Co., MT; Lewis Hagen, MT and Genex.



Walls EXT 6105
LT Timberwolf 5014
LT Ethel 3245

N Bar Emulation EXT
Walls Eric Dennis 0718
Strike 7090
LT Ethel 9070

BW WW YR M IMF REA
+13 +51 +42 +23 -03 +26

Timberwolf is a powerful grandson of EXT and out of an excellent daughter of Strike Value 7097. Timberwolf calves come easy and his high volume calves with exceptional muscle. The first Timberwolf calves will sell March 31, 2008. Owned with TC Ranch, NE; Livestock Trail Ranch, SD and Genex.



N Bar Emulation EXT
Sitz JLS Emulation Ext 536P
Ideal 4485 of Ideal 4286

Emulation N Bar 5522
N Bar Pennae 2404
DHD Lassie 6807
E E 4286 of Ideal 2340 1254

BW WW YR M IMF REA
+30 +39 +78 +23 +11 +13

536P is an excellent son of EXT and out of the popular "4485" cow. He is a flush brother to Sincier Excellency, the high selling bull for Sincier in 2006, a maternal brother to J&J Present Value and a host of other popular maternal brothers and sisters. 536P sire exceptional length and thickness in a moderate package. His first sons will sell March 31, 2008. Owned with Sitz Angus Ranch, MT.



This sale will be broadcast via satellite or RFD-TV by Superior Productions on Direct TV channel 379 and Dish Network Channel 231. To register as a buyer or order a DVD call Superior Productions at 800-431-4452.



McCumber Angus Ranch

8675 37th Ave., Bolotts, MD 58366
Chuck: 701/246-3366
Mall: 701/246-3847
E-mail: mccumber@ufma.com
Web site: mccumberangus.com

If you would like to receive our newsletters, please contact us.

The cowherd known for Outstanding Maternal Traits.

Like Father, Like Son



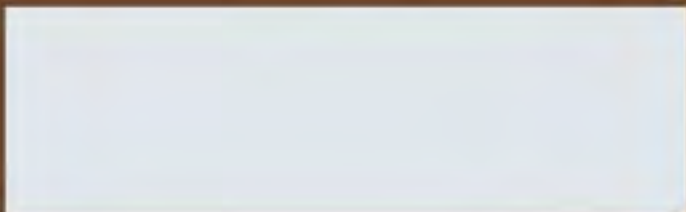




McCumber
Angus
Ranch 



Dated Material: Please deliver by March 17.



**Top Row:
Lots 1 and 3**

**Bottom Row:
Lots 14 and 50**

