



Selling 110 Angus Bulls



March 30, 2009

1:30 P.M.

At the Ranch

1 Mile West of Rolette, North Dakota

McCumber *Angus* Ranch



The cow herd known for Outstanding maternal traits.

Chuck and Gail Tastad
Phone/fax 701/246-3366
Email: mccumber/utma.com
Web site:
www.mccumberangus.com



Matt, Cynthia,
Sydney, Eva, Nate & Brett Tastad
Phone/fax 701/246-3847
Web site:
www.mccumberangus.com

Dear Cattle Men and Women,

We would like to welcome you to our annual bull sale, and thank you for your continued support and interest in our program. This is our 45th continuous year in the Angus Seedstock business and is a program that has been dedicated to producing profitable, predictable, problem-free cattle that will make a positive impact on our customer's operations. We take being a seedstock supplier very seriously and are dedicated to supplying genetics that are safe (free of genetic defects) and add to the bottom line of those who purchase them. The bulls selling do not trace to any of the recent suspect lines of cattle for AM (Curly Calf) or the two new abnormalities.

This year's offering is a result of breeding cattle with the same basic principles and philosophies that were used when starting this herd 45 years ago. Our message has not changed. We continue to focus on breeding cattle that reproduce efficiently, maintain themselves on grass or high roughage rations, and are adaptable to any environment in which they are placed. In 45 years we have not been forced to make drastic changes in the type of cattle we produce, because we use proven genetics backed by generations of outstanding females. Sure we've tweaked things along the way, but the results are a genetic package that we believe will keep our customer profitable even in the toughest times.

The bulls being offered are the heaviest set of bulls we have ever weaned. They did extremely well this summer, and have done amazingly well this winter considering all the cold and snowy weather we have received. The bulls are hard, sound on their feet and legs, and were fed a 42 Mega-Cal ration, which is the lowest energy diet we have ever fed. The bulls are designed to work in any environment or management scenario, and are backed by a cow herd that has been selected to be highly fertile, easy fleshing, moderate framed, and have the ability to wean a big, healthy calf year after year. Convenience traits are mandatory here at Mc Cumber, so be assured the bulls are raised by females with good udders, sound feet and legs, an easy disposition, mothering instinct, and calving ease.

Once again the sale will be broadcast by Superior Productions on RFD-TV. A video preview will be available either on Superior's website, or by contacting Superior, or us. If you are interested in participating through Superior, please make sure you pre-register in advance of the sale.

As always, all the performance, and ultrasound data is provided in the catalog. If there is some other information you would like, we would be happy to provide it to you. The bulls will be semen tested before the sale and are guaranteed to be breeders and we stand behind them 100%. If you have any questions or problems, please let us know. The bulls are available for viewing anytime, and we would be glad to show them to you.

If we can be of any assistance, please do not hesitate to call either Dad or me.

Matt and Chuck Tastad

Contact McCumber

Chuck & Gail Tastad701.246.3366
Matt, Cynthia,
Sydney, Eva, Nate & Brett Tastad701.246.3847
8675 37th Avenue Rolette, ND 58366
E-mail: mccumber@utma.com
Web site: www.mccumberangus.com
1 mile west and 1/4 mile south of Rolette, North Dakota

Sale Day Telephones

701.246.3366 **701.871.9800** **701.871.1072**

Sale Personnel

Auctioneer:

Roger Jacobs406.698-7685
Box 270, Shepherd, MT 59079

Sale Consultants:

Casey St. Blanc 985.789.2110
Cody, WY

Shane Castle306.741.7485
Swift Current, SK, Canada

Special Representatives:

Very Frey, Angus Journal.....701.537.5383
Cell701.721.0344

Terry Robinson, Farm and Ranch Guide701.255.3037

Kirby Goettsch, Western Livestock Reporter605.380.3939

Scott Dirk, Tri-State Neighbor605.335.7300

*Buyers unable to attend the sale may send bids to
McCumber Angus Ranch, Sale Consultants or Representatives.*

Sale Terms & Conditions

All cattle sell under the standard terms and conditions of the American Angus Association. Terms of the sale are cash.

Volume Discounts:

We will discount your purchase price 3% on 3 head purchased by one buyer and up to 10% on 10 head purchased by one buyer.

Delivery:

We offer free delivery in North Dakota and adjoining states on all bulls and free delivery up to 1,000 miles on purchases totalling \$2,500. Beyond 1,000 miles delivery will be billed at cost.

Sight Unseen Purchase Program:

If you cannot attend the sale and would like to purchase bulls, please give us a call and we'll be glad to help you with your order. Describe the type of bull, minimum and maximum parameters and price range. We want to assure you that your bid will be handled with the utmost professionalism and your money handled like it is our own. We guarantee 100% satisfaction on all orders. If you get the bull and don't like him, we will take him back.

Lodging & Transportation

Rolette Motel, Rolette ND701.246.3733
Sky Dancer Hotel & Casino, Belcourt ND.....701.244.2400
Econo Lodge, Rugby ND.....701.776.5776
Hub Motel, Rugby ND.....701.776.5833
Multiple locations in Minot ND

Rolette ND has a 3,500 foot paved runway. Minot, ND is served by Northwest Airlines. Minot is 90 miles from the ranch.

Herd Health & Nutrition

Herd Health:

The McCumber herd is in excellent health, and all cattle sell with interstate health papers. Bulls have been vaccinated with Vista Once SQ, 7-way, Dectomax and have had a complete fertility test

Nutrition:

The bulls were feed a high roughage ration. The ration was balanced to ensure the bull's soundness and longevity. We reached a maximum of 42 Mega Cal, and the protein level was 13.8%. The bulls are hard, sound footed, and have not been pushed at all. The ration consisted of Alfalfa-Grass hay, Pea Silage, Sorghum Silage, and Whole shell corn. In December the corn was completely replaced with earlage as the only grain source. For those that do not know what earlage is, it consists of the grain, cob, and husk, thus adding additional fiber to the ration. Considering the winter, and low mega-cals we were very pleased with how the bulls performed. In the past we have feed a medicated creep before going to pasture, however this past spring the calves received no supplemental feed at home in the Lot, or on pasture.

Marketing

If you have calves sired by our bulls, or females bred to our bulls, we would like to help you market them. We, along with the Spickler Ranch, sponsored the 3rd Annual Angus Partners commercial female sale in Mandan. The consignors realized a considerable premium over the current market for their McCumber and Spickler sired replacement open and bred females. We are planning to continue with this sale and would be happy to accept your consignment at any time. I would also suggest checking out the Angus Source program. This is a very effective way to set apart your Angus sired feeder cattle, and replacement females.

Semen Interest

You will notice that we are retaining an interest in quite a few of the bulls. These are bulls we may want to collect semen from in the future for use within our herd. If we are able to sell semen from your bull, we would share with you any revenue generated from the sale of semen. The bulls would be collected when it was convenient for you. The buyer has full possession and salvage value of the bull. Many of these bulls will undoubtedly sell in the price range of the commercial man.

Reference Sire:

A Sinclair Extra 4X13

Calved 02/07/2004 Reg. # 14774030

Emulation N Bar 5522
N Bar Emulation EXT
 N Bar Primrose 2424

N Bar Prime Time D806
N Bar Lady Ida S C C 2P37
 N Bar Lady Ida F1080

Emulation 31
 Ankony 8F78 Lass 8F275
 Emulation 31
 Primrose N Bar 9962

Gardens Prime Time
 N Bar Miss Emulous A404
 N Bar Shadow X4124
 N bar Lady Ida D1986

EPDs										Dam's Prod.		
BW	WW	YW	Milk	SC	IMF	REA	Fat	\$W	\$B	BW	WW	YW
-1.2	40	75	20	-.72	.60	-.17	.055	28.54	40.07			

- He has exceeded our expectations by siring consistent, problem free cattle that excel at many different levels.
- Sure-fire heifer bull with excellent new born calf vigor

- He sires moderate framed, deep bodied cattle, with natural thickness, and exceptional length
- His daughters in production are phenomenal, with superior udder quality, an easy disposition, and great mothering ability.
- He consistently adds IMF to his progeny, with above average REA.
- Fertility on his daughters has been excellent with superb breed back on the first calf heifers, and 22 out of 24 of his yearling daughters settling first service AI.
- Semen quality on his son's has been outstanding with no outs for small scrotal measurements
- His popularity is growing rapidly, especially among commercial producers across the country
- Owned with Sinclair Cattle Co., N-Bar Land and Cattle, Lewis Hagen, and Genex Cooperative Inc.
- Semen available through Genex



Reference Sire:

B Sitz JLS Emulation EXT 536P

Calved 08/16/2004 Reg. # 14809623

Emulation N Bar 5522
N Bar Emulation EXT
 N Bar Primrose 2424

D H D Traveler 6807
Ideal 4465 of 6807 4286
 E E 4286 of Ideal 2240 1254

Emulation 31
 Ankony 8F78 Lass 8F275
 Emulation 31
 Primrose N Bar 9962

Q A S Traveler 23-4
 Bemindful Maid D H D 0807
 Ee 30 1254 of Ideal 5254 960
 Ee 30 2240 of Ideal 8245 960

EPDs										Dam's Prod.		
BW	WW	YW	Milk	SC	IMF	REA	Fat	\$W	\$B	BW	WW	YW
3.6	39	69	23	-.75	.19	.06	.026	22.92	31.11			

- 536P was our choice of the 2006 Sitz Spring Sale
- He is a moderate framed, easy fleshing, powerful son of EXT
- His dam is the 4465 cow from Jorgenson's in SD who is known for feed efficiency
- He is a brother to Sinclair Excellency 5X25, Sinclair Net Present Value, and Sinclair Rito Legacy 3R9 all leased to major AI bull studs
- His sons' are wide based, long bodied, deep ribbed, moderate framed, and naturally thick
- His first daughters in production are as nice a set of heifers as we have ever calved out. They have near perfect udders, a super disposition, and are extremely easy fleshing. He has matured into an impressive beef bull
- He will see heavy use in our herd for the 2009 breeding season
- Owned with Sitz Angus Ranch
- Semen available from Mc Cumber



Reference Sire:

C McCumber 004 Traveler 6120

Calved 02/08/2006 Reg. # 15428743

Sitz Traveler 8180
 SAV 8180 Traveler 004
 Boyd Forever Lady 8003

Mc Cumber 6122 Equator 8113
 Erianna 2206 of Mc Cumber
 Erianna 880 of Mc Cumber

GDAR Traveler 71
 Sitz Everelda Entense 1137
 AAR New Trend
 SVF Forever Lady 57D
 Mc Cumber Equator 6122
 Rosetta 421 of Mc Cumber
 Mc Cumber 124 Traveler 212
 Erianna 250 of Mc Cumber

EPDs										Dam's Prod.		
BW	WW	YW	Milk	SC	IMF	REA	Fat	\$W	\$B	BW	WW	YW
4.2	61	110	28	.91	.28	.10	.058	26.73	42.84			

- The top performing and high selling bull in our 2007 bull sale
- Consistently sires outstanding performance in a moderate framed, easy doing package.
- His dam is an excellent pathfinder daughter of Mc Cumber 6122 Equator 8113, and a donor for us.
- His daughters are high volume, thick made females with excellent foot and leg structure
- His son's will be easy to find on sale day.
- He is our choice of 004 sons to continue on with
- Owned with Kemnitz Angus in SD
- Semen available from either owner



Reference Sire:

D McCumber Tradition 383

Calved 02/11/2003 Reg. # 14667477

N Bar Emulation EXT
Leachman Right Time
 Leachman Erica 0025

McCumber 124 Traveler 212
Lassie 7015 of McCumber
 Lassie 648 of McCumber

Emulation N Bar 5522
 N bar Primrose 2424
 Tehama Bando 155
 Leachman Erica 8058
 Traveler 124 G D A R
 Miss Wix 365 of McCumber
 Rito 2100 G D A R
 Lassie 252 of McCumber

EPDs											Dam's Prod.		
BW	WW	YW	Milk	SC	IMF	REA	Fat	\$W	\$B		BW	WW	YW
5.8	30	69	18	.46	.01	-.11	.033	10.89	11.98				

- The outstanding son of Right Time that we chose to carry on the Right Time influence
- Sires moderate framed, heavy muscled progeny with excellent foot and leg structure
- His daughters in production are easy fleshing, perfect uddered, and productive
- A son sired the top selling open heifer calves in the 2008 Angus Partners commercial heifer sale.
- Sons continue to be very popular with our commercial customers
- Owned with Heritage Angus Farm, Ed and Lori Williams and Family MS
- Semen available from McCumber or Heritage Angus



Reference Sire:

E LT Timberwolf 5014

Calved 02/18/2005 Reg. # 15147477

N Bar Emulation EXT
Wulffs Ext 6106
 Wulffs Erica Dianna C116

Sitz Value 7097
L T Ethelda 3245
 L T Ethelda 9012

Emulation N Bar 5522
 N Bar Primrose 2424
 Tehama Bando 155
 Wulffs Erica Dianna A308
 Sitz Traveler 6802
 Sitz Eisa Evergreen 791
 Marcys Powerstroke
 Marcys 94 Ethelda E 90

EPDs											Dam's Prod.		
BW	WW	YW	Milk	SC	IMF	REA	Fat	\$W	\$B		BW	WW	YW
1.5	52	90	20	.27	.04	0	-.022	29.19	34.80				

- He is a powerful son of Wulff's EXT and out of an outstanding Sitz Value daughter.
- Timberwolf is a light to moderate birth weight sire, and many of his sons will be suitable for heifers
- He sires tremendous performance and his sons are super thick with extra width and dimension to their rear quarters
- His sons have excellent testicular development, and super foot structure, with well shape toes, and plenty of heel
- His first daughters in production are easy going, good uddered, and seem to be maintaining their flesh well while nursing their first calves
- Owned with Lindskov-Thiel Ranch, TC Ranch and Genex Cooperative Inc.
- Semen available through Genex



Reference Sire:

F Leachman Right Time

Calved 01/30/1992 Reg. # 11750711

Emulation N Bar 5522
 N Bar Emulation EXT
 N Bar Primrose 2424

Tehama Bando 155
 Leachman Erica 0025
 Leachman Erica 8058

Emulation 31
 Ankony 8F68 Lass 8F275
 Emulation 31
 Primrose N Bar 9962
 Band 234 of Ideal 3163
 Tehama Blackcap G373
 Leachman Full Image
 Leachman Erica 1010

EPDs											Dam's Prod.		
BW	WW	YW	Milk	SC	IMF	REA	Fat	\$W	\$B		BW	WW	YW
2.3	44	83	18	.18	-.07	-.10	.029	25.35	10.09				

- He has set the standard for udder quality, and outstanding females in the Angus breed
- His sons have performed very well for us
- We will have one of the largest offerings of Right Time sons in the country
- His daughters continue to do a nice job for us and we especially like mating them back to 4X13



Reference Sire:

H McCumber Total Value 551

Calved 01/28/2005 Reg. # 15050907

Vermilion Dateline 7078
Mc Cumber 7111 Total Value
 Miss Wix 7111 of Mc Cumber

Sitz Traveler 9929
B Pride 9124 of Mc Cumber
 B Pride 839 of Mc Cumber

Connealy Dateline
 Vermilion Blackbird 5044
 G D A R Traveler 71
 Miss Wix 365 of Mc Cumber
 D H D Traveler 6807
 Sitz Everelda Entense 1137
 P J M Power 291
 B Pride 134 of Mc Cumber



- 551 is a moderate birth sire who consistently adds do-ability, natural thickness, and outstanding structure to his progeny
- He was a sale feature in our 2006 bull sale
- His dam is an outstanding pathfinder daughter of Sitz Traveler 9929
- Many of his sons will be suitable for heifers
- Owned with Lindskov Angus Ranch SD
- Semen available through Mc Cumber

EPDs											Dam's Prod.		
BW	WW	YW	Milk	SC	IMF	REA	Fat	\$W	\$B		BW	WW	YW
1.2	39	68	23	-.03	.06	-.05	.025	27.52	16.35				

Reference Sire:

G SAV 8180 Traveler 004

Calved 01/01/2000 Reg. # 13512009

G D A R Traveler 71
Sitz Traveler 8180
 Sitz Everelda Entense 1137

A A R New Trend
Boyd Forever Lady 8003
 S V F Forever Lady 57D

Traveler 1148 G D A R
 G D A R Miss Blackcap 567
 G D A R Rainmaker 340
 Sitz Everelda Entense 2335
 V D A R Shoshone 548
 Donna A A R 74
 Leachman Right Time
 S V F Forever Lady 1128

- We continue to be pleased with the job 004 is doing for us
- His sons have sold extremely well in our bull sales and his daughters continue to do an excellent job
- His sons have outstanding performance in the right package, and are naturally thick, and very deep bodied
- The daughters here at Mc Cumber are moderate framed, easy fleshing, have outstanding udders and are very fertile



EPDs											Dam's Prod.		
BW	WW	YW	Milk	SC	IMF	REA	Fat	\$W	\$B		BW	WW	YW
3.6	58	106	24	.96	.14	.10	.086	31.17	31.24				

Reference Sire:

I McCumber 004 Traveler 513

Calved 01/18/2005 Reg. # 15050814

Sitz Traveler 8180
S A V 8180 Traveler 004
 Boyd Forever Lady 8003

Leachman Right Time
Miss Wix 301 of McCumber
 Miss Wix 1119 of McCumber

G D A R Traveler 71
 Sitz Everelda Entense 1137
 A A R New Trend
 S V F Forever Lady 57D
 N Bar Emulation EXT
 Leachman Erica 0025
 McCumber Ferdinand 896
 Miss Wix 8002 of McCumber

- He was the high selling bull in our 2006 bull sale
- He is a short gestation, easy calving bull who we have successfully used on heifers
- His dam is an outstanding daughter of Right Time that descends from 5 consecutive generations of pathfinder cows
- His sons are moderate framed, deep bodied, and thick
- The first daughters in production are deep bodied, wide made females with outstanding udders, and an excellent mothering instinct.
- Owned with Diamond W Angus Ranch TX
- Semen Available through Mc Cumber



EPDs											Dam's Prod.		
BW	WW	YW	Milk	SC	IMF	REA	Fat	\$W	\$B		BW	WW	YW
1.2	41	90	21	.44	.05	.29	.061	22.37	30.71				



7181 & 465 are maternal brothers to dam of Lot 1.



Miss Wix 2027, granddam of Lot 1.



Great grand dam of Lot 1.



Miss Wix 098, great grand dam of Lot 1.

Lot: **1** Mc Cumber 4X13 Extra 829

Calved 1/22/2008 Reg. # 16102276

N Bar Emulation EXT
Sinclair Extra 4X13
N Bar Lady Ida S C C 2P37

S A V 8180 Traveler 004
Miss Wix 6114 of Mc Cumber
Miss Wix 2027 of Mc Cumber

Emulation N Bar 5522
N Bar Primrose 2424
N Bar Prime Time D806
N Bar Lady Ida F1080
Sitz Traveler 8180
Boyd Forever Lady 8003
Garrison 8128 Dynamite
Miss Wix 352 of Mc Cumber

Ind. Record	
BW	75
WW	848
205	821
WR	117
ADG	3.14
YW	1,250
365	1,323
YR	111
IMF	3.56/96
REA	13.5/115
FAT	0.3/125

EPDs										Dam's Prod.		
BW	WW	YW	Milk	SC	IMF	REA	Fat	\$W	\$B	BW	WW	YW
0	53	1+89	25		1+.33	1+.12	1+.073	33.04	37.57	1/90	1/117	1/111

Selling 1/2 interest and full possession- Recommended for use on heifers- The combination of phenotype, performance, and pedigree make this bull one of the top calving ease herd bull prospects to sell this year. Complete, best describes this one of a kind herd bull prospect. 829 started out with only a 75 lb. birth weight, but weaned off at 848 lbs. and earned a 205 day weight of 821 lbs. to ratio 117 as his dam's first calf. This ranked him as the #4 weaning weight bull of the calf crop. He continued to perform and earned a 365 day weight of 1323 lbs. to ratio 111. He also recorded one of the top REA's of the contemporary group with an adjusted REA of 13.5 to ratio 115. Along with his outstanding performance he is near perfect in his design with a ton of meat, and muscle. He is an extremely wide based bull with depth and width to his chest. He moves out extremely free and easy, and is deep from fore rib to flank, with outstanding feet and legs. 829 is a big scrotaled son of 4x13 and earned one of the highest REA EPD's of any of his sons to date. May be the best part about him is the line of females behind him. They have excelled for fertility, productivity, and longevity. His dam is a moderate framed, easy fleshing, perfect uddered daughter of 004. She is outstanding on her feet and legs and bred back quickly while raising 829. His grand dam is Miss Wix 2027 of Mc Cumber who is a 6th consecutive generation pathfinder and is one of the most

efficient, productive, fertile females in the herd. 2027 is moderate framed, easy fleshing, excellent uddered, and thick. She has never missed AI, and always brings in one of the heaviest calves of the calf crop. We also consider her one of the best footed cows in the herd with a perfectly shaped hoof and plenty of heel. Miss Wix 2027 has 2 daughters in production with a combined 2 /87 for BW, 2/ 113 for WW, 2/108 for YW, and 2/114 for REA. She has also produced 2 sons that have sold for an average of \$8000 to Brad Gilbertson in 2005, and to North Star Angus Ranch in 2008. Not only has 2027 got the job done, but the cows behind her have excelled as well.

We think 829 is one of the top bulls ever produced at Mc Cumber. Not only did he excel at the traits that are measurable, but he is backed by one of the strongest cow families in the breed. I don't know of any other bulls to sell this year that are backed by 6 consecutive generations of pathfinder cows. Along with this he is one of the biggest scrotaled, highest REA sons of 4x13, and has all the credentials to have a positive impact on the Angus breed.

Lot 001 - Maternal Production Record						
	BW	WW	YW	IMF	REA	Pathfinder
Miss Wix 6114	1/90	1/117	1/111	1/96	1/115	
Miss Wix 2027	5/97	5/107	5/105	6/102	6/105	X
Miss Wix 352	7/99	7/108	5/104	17/96	17/98	X
Miss Wix 098	6/106	6/106	6/106	7/94	7/103	X
Miss Wix 365	10/102	10/106	7/108	12/102	12/103	X
Miss Wix 298	12/107	12/113	12/109			X
Miss Wix 682	10/105	10/112	10/111			X



Mc Cumber 383 Tradition 8134

Feature Bull

Lot: **2** Mc Cumber 383 Tradition 8134



Mc Cumber Tradition 383, sire of Lot 2.

Calved 2/8/2008
Reg. # 16105107

Leachman Right Time
Mc Cumber Tradition 383
Lassie 7015 of Mc Cumber

N Bar Emulation EXT
Leachman Erica 0025
Mc Cumber 124 Traveler 212
Lassie 648 of Mc Cumber
Emulation N Bar 5522
N Bar Primrose 2424
G D A R Royce 131
Homestretch Miss Wix 301

N Bar Emulation EXT
Oak Hill Miss Wix 9402
Homestretch Miss Wix 663

Ind. Record	
BW	94
WW	808
205	737
WR	105
ADG	3.14
YW	1,210
365	1,239
YR	104
IMF	3.96/106
REA	11/94
FAT	0.31/129

EPDs										Dam's Prod.		
BW	WW	YW	Milk	SC	IMF	REA	Fat	\$W	\$B	BW	WW	YW
4	37	1+76	21	1+.56	1+.03	1-.06	1+.032	17.7	24.91	4/105	4/109	4/106



Oak Hill Miss Wix 9402, dam of Lot 2.

Selling ½ interest and full possession- 8134 is a legitimate beef bull. He has as much natural thickness, and depth of body as any bull in this sale. He puts a leg down in all four corners and has a masculine eye appealing look to him. He is one of the best sons of Mc Cumber Tradition 383 that we have produced. He was a favorite of visitors to the ranch this past summer and weaned off his outstanding dam at 808 lbs. without creep. He is the natural calf of Miss Wix 9402 who we purchased half interest in after seeing on the National Angus Tour. Miss Wix 9402 is an outstanding daughter of EXT who is deep bodied, easy fleshing, good footed, and has the type of udder you would expect from an EXT daughter. She traces directly to Miss Wix 365 of Mc Cumber and has

been a top producer with a WWR of 4/109, and a YWR of 4/106. Her progeny have excelled for Oak Hill Angus in VA, and she has already produced one son for us that sold to Royale Manor Angus in IN, through our 2007 bull sale and a daughter that sold as a heifer calf to Bohi Angus in KS through our 2006 female sale. She later sold as a feature through their dispersion and went on to produce a \$4750 dollar heifer pregnancy for her new owners through the 2009 Foundation Female sale in Denver. 8134 possesses all the tools to be an outstanding cow maker. He has an abundance of rib, is naturally thick, moderate framed, big scrotaled and extremely sound on his feet and legs. He is definitely one to mark.



Mc Cumber Timberwolf 807

Lot: **3** Mc Cumber Timberwolf 807

Calved	Reg. #	Ind. Record	
1/16/2008	16102154	BW	86
		WW	960
		205	848
		WR	121
		ADG	3.77
		YW	1,442
		365	1,451
		YR	122
		IMF	3/81
		REA	12.4/106
		FAT	0.23/96

Wulffs Ext 6106	N Bar Emulation EXT
LT Timberwolf 5014	Wulffs Erica Dianna C116
L T Ethelda 3245	Sitz Value 7097
	L T Ethelda 9012
	N Bar Emulation EXT
Leachman Right Time	Leachman Erica 0025
MGSA Miss Wix 4010	GDAR SVF Traveler 234D
M G S A Miss Wix 012	V D A R Miss Wix 6051

EPDs										Dam's Prod.		
BW	WW	YW	Milk	SC	IMF	REA	Fat	\$W	\$B	BW	WW	YW
1.6	59	I+100	22	I+.11	I+.01	I+.06	I-.007	31	39.34	3/92	3/106	3/101

Selling 2/3 interest and full possession- Recommended for use on heifers- Wow!! Talk about curve-bender, and explosive performance. 807 had the heaviest actual weaning weight we have ever recorded. He started at only 86 lbs. out of a cow and earned a WW of 960 lbs. without creep. He recorded a 205 day weight of 848 lbs. to ratio 121 and took his place as the #2 weaning weight bull of the calf crop. He continued to perform and gained 3.77 lbs/day on a maximum 42 MCAL ration. He recorded the heaviest YW at 1442 lbs. and earned a 365 day weight of 1451 lbs. to ratio 122. This big time performance bull is extremely long bodied, thick made, and super sound. He is sound and athletic in his movement and not only a big bull, but a good bull. His dam is a daughter of Right Time that is moderate framed, deep bodied, super uddered, easy fleshing, and extremely productive and fertile. Miss Wix 4010 maintains a calving interval of 4/346 days and her progeny have an average birth weight of 78 lbs

with 3/92 BWR, 3/106 WWR, and 3/101 YWR. You'll put on a Lot of miles to find a calving ease bull with this much performance.



Sire of Lot 3.



Mc Cumber 4X13 Extra 8013

Lot: **4** Mc Cumber 4X13 Extra 8013

Calved	Reg. #	Ind. Record	
2/13/2008	16102143	BW	87
		WW	832
		205	767
		WR	100
		ADG	3.19
		YW	1,240
		365	1,277
		YR	100
		IMF	4.38/121
		REA	11.4/102
		FAT	0.32/139

N Bar Emulation EXT	Emulation N Bar 5522
Sinclair Extra 4X13	N Bar Primrose 2424
N Bar Lady Ida S C C 2P37	N Bar Prime Time D806
	N Bar Lady Ida F1080
Mc Cumber Foundation 701	Mc Cumber 124 Traveler 212
Rosetta 162 of Mc Cumber	Miss Wix 235 of Mc Cumber
Rosetta 601 of Mc Cumber	G D A R Gold Nugget 766
	Rosetta 421 of Mc Cumber

EPDs										Dam's Prod.		
BW	WW	YW	Milk	SC	IMF	REA	Fat	\$W	\$B	BW	WW	YW
I+.5	I+34	I+66	I+23	I-.01	I+.39	I-.18	I+.042	25.59	35.26	4/101	4/100	4/103

Selling 1/2 interest and full possession- Recommended for use on heifers- This calving ease herd bull prospect has cow-maker written all over him. 8013 is long bodied, super correct on his feet and legs, is deep from fore rib to flank, big scrotaled, and thick from front to rear. 8013 weaned off his recipient dam at 832 lbs. He had a gain ratio of 109, and ratioed 121 for IMF, and 102 for REA. Along with this his dam is one of the top Mc Cumber Foundation 701 daughters in the herd. Rosetta 162 of Mc Cumber is a thick made, deep bodied easy fleshing female, with an outstanding udder. She is a member of the Rosetta cow family that traces back to the dam of Mc Cumber Stretch 604. Her Grand dam is the mother to Mc Cumber 6122 Equator 8113 who left many top producing daughters in the herd. Her only other son to sell at this point was Mc Cumber 6122 Equator 419 who sold for \$7500 as a sale feature through our 2005 bull sale. Her dam sold through a previous cow sale to Majic Valley Angus Ranch in WA and has done an outstanding job for them. This entire line of cows has been very productive.

We think 8013 is one of the top 4x13 sons produced to date. He should produce the type of females that a breeder can build a herd around, without sacrificing early growth, and carcass traits.



Maternal Brother 419

Lot 004 - Maternal Production Record			
	BW	WW	YW
Rosetta 162	4/101	4/100	4/103
Rosetta 601	9/101	9/109	8/104
Rosetta 421	3/97	3/106	3/109
Rosetta 405	8/95	8/105	7/101



Mc Cumber 6120 Traveler 8144

Lot: **5** Mc Cumber 6120 Traveler 8144

Calved 2/11/2008
Reg. # 16102189

S A V 8180 Traveler 004
Mc Cumber 004 Traveler 6120
Erianna 2206 of Mc Cumber

Sitz Traveler 8180
Boyd Forever Lady 8003
Mc Cumber 6122 Equator 8113
Erianna 880 of Mc Cumber
Leachman Right Time
Sitz Everelda Entense 1137
BT Traveler 228K
B Pride 690 of Mc Cumber

Pine Creek Right Time 1147
B Pride 463 of Mc Cumber
B Pride 273 of Mc Cumber

Ind. Record	
BW	98
WW	940
205	880
WR	126
ADG	3.07
YW	1,333
365	1,371
YR	115
IMF	4.01/108
REA	12.1/103
FAT	0.21/88



Maternal brother of Lot 5.



Dam of Lot 5.

EPDs										Dam's Prod.		
BW	WW	YW	Milk	SC	IMF	REA	Fat	\$W	\$B	BW	WW	YW
4.4	62	+106	30	+0.46	+0.25	+0.04	+0.043	26.17	43.71	3/104	3/119	3/113

Selling ½ interest and full possession- This powerhouse herd bull prospect crushed the scale at weaning with an actual weaning weight of 940 lbs. without creep and earned the highest 205 day weight of any bull in our history at 880 lbs. to ratio 126 as the top indexing bull of his calf crop. 8144 is powerful in his design with an abundance of rib, and thickness throughout. He stands down on a big, well shaped hoof with substance of bone, and a leg in all corners. He is clean sheathed, has a large scrotum, and moves free and easy. 8144 has a WW EPD of +62 that ranks in the top 11/2 % of the breed for non-parent bulls and his YW EPD of +106 ranks in the top 3%, making him one of the top performance bulls in the breed. His pathfinder dam has earned the top nursing

ratio of any cow in the herd with a WWR of 3/119. B Pride 463 of Mc Cumber is one the most impressive cows on the ranch. She has an abundance of rib, is superb on her feet and legs and has a near perfect udder. She is extremely fertile settling first service AI every year, and maintains her condition while raising some of the top calves ever produced on this ranch. She maintains a calving interval of 4/366 days and has a WWR of 3/119, YWR 3/113, IMF 3/116, and a REA 3/101. The cows behind her have been solid producers, and extremely fertile. Her dam and grand dam have both settled first service AI every year and her grand dam who sold through our 2000 Female sale to Sterling Land and Livestock in TX is still in production at the age of 17. Not only is 8144 a powerful performance herd bull prospect, but he is out of the most productive cow on the ranch and is backed by generations of females with fertility, and longevity.



Mc Cumber Timberwolf 862



Maternal brother of Lot 6.



Dam of Lot 6, Miss Wix 409

Lot:
6 Mc Cumber Timberwolf 862

Calved 1/27/2008
Reg. # 16102306

Wulffs Ext 6106
LT Timberwolf 5014
L T Ethelda 3245

S A V 8180 Traveler 004
Miss Wix 409 of Mc Cumber
Miss Wix 2022 HC Mc Cumber

N Bar Emulation EXT
Wulffs Erica Dianna C116
Sitz Value 7097
L T Ethelda 9012
Sitz Traveler 8180
Boyd Forever Lady 8003
Leachman Right Time
Miss Wix 7111 of Mc Cumber

Ind. Record	
BW	88
WW	776
205	706
WR	101
ADG	3.52
YW	1,226
365	1,269
YR	107
IMF	4.65/125
REA	10.4/89
FAT	0.26/108

Grand dam of Lot 862,
Miss Wix 2022 of HC
Mc Cumber.



Great grand dam of Lot
862, Miss Wix 7111 of
Mc Cumber.



EPDs										Dam's Prod.		
BW	WW	YW	Milk	SC	IMF	REA	Fat	\$W	\$B	BW	WW	YW
1.6	48	1+89	24	1+.43	1+.19	1-.09	1+.018	27.37	35.58	3/94	3/107	3/106

Selling 2/3 interest and full possession- Recommended for use on heifers- 862 is a real chunk and has as much width and expression to his rump as any bull in this sale. He is extremely thick from front to rear and has depth and spring to his rib. He stands down square and wide on his feet and legs, and moves out well as he travels. 862 is a moderate framed bull that earned a gain ratio of 115, and had an IMF score of 4.65 to ratio 125 with only .26 back fat. He is a maternal brother to last year's high selling bull Mc Cumber 4X13 Extra 718 that sold for \$13,000 to Currant Creek Angus Ranch, Lance Johnson, and Becker Farms in MT. The cows behind 862 are second to none in the Angus breed. His dam Miss Wix 409 of Mc Cumber made pathfinder in her first year eligible, and stems from one of the most fertile, and productive cow lines on the ranch. 409 is a moderate framed, easy fleshing, perfect uddered daughter of 004 who has a BWR of 3/94, WWR 3/107, YWR 3/106, IMF 3/110, REA 3/99, and a calving interval 4/371. She has never missed AI, and is currently nursing a full brother to 718. Her only daughter has a BWR 1/85 and a WWR 1/108 on her first calf. She also has settled AI on her first two times out. His Grand dam is none other than Miss Wix 2022 of Mc Cumber who is a favorite of all who see her and is one of the top donors on the ranch. She has produced 5 sons that

have sold for an average of \$6000 to registered and commercial producers alike. She had the 3rd high selling bull last year to Oxbow Angus Ranch in MT for \$11,000, and is the dam to the herd bull prospects selling as Lots 50 and 51 in this sale. Her only daughters in production are Miss Wix 409, and her 4x13 daughter that is nursing her first calf. The cows behind 862 are known for their productivity, fertility, and herd bull producing ability. On the maternal side of the pedigree 5 out of 6 generations of cows have made pathfinder.

This calving ease herd bull prospect stacks some of the top cows on the ranch with ideal performance, and an appealing phenotype.

Lot 006 - Maternal Production Record						
	BW	WW	YW	IMF	REA	Pathfinder
Miss Wix 409	3/94	3/107	3/106	3/110	3/99	X
Miss Wix 2022	4/95	4/105	4/104	12/112	12/97	X
Miss Wix 7111	4/98	4/105	4/105	18/102	18/103	
Miss Wix 365	10/102	10/106	7/108	12/102	12/103	X
Miss Wix 294	12/107	12/113	12/109			X
Miss Wix 682	10/105	10/112	10/111			X



Mc Cumber 6120 Traveler 882

Lot: **7** Mc Cumber 6120 Traveler 882

Calved	Reg. #	Ind. Record	
1/30/2008	16102324	BW	91
		WW	822
		205	776
		WR	111
		ADG	3.07
		YW	1,215
		365	1,267
		YR	107
		IMF	4.04/109
		REA	11.7/100
		FAT	0.21/88

S A V 8180 Traveler 004	Sitz Traveler 8180
Mc Cumber 004 Traveler 6120	Boyd Forever Lady 8003
Erianna 2206 of Mc Cumber	Mc Cumber 6122 Equator 8113
	Erianna 880 of Mc Cumber
	N Bar Emulation EXT
Leachman Right Time	Leachman Erica 0025
Lassie 521 of Mc Cumber	Mc Cumber Foundation 701
Lassie 974 of Mc Cumber	Lassie 272 of Mc Cumber

EPDs											Dam's Prod.		
BW	WW	YW	Milk	SC	IMF	REA	Fat	\$W	\$B		BW	WW	YW
3.5	49	+90	26	+5.9	+1.7	-0.1	+0.039	23.95	31.19		2/100	2/105	2/104

Selling 2/3 interest and full possession- 882 is a top-notch herd bull prospect out of the first calf crop by the 2007 High Selling bull Mc Cumber 004 Traveler 6120. 882 is a stout made, deep bodied, thick bull that weaned off his outstanding dam at 822 lbs. with a 205 day weight of 776 lbs. to ratio 111. He is outstanding on his feet and legs, and ratioed at least 100 on every measurable trait. His dam is one of the top Right Time daughters on the ranch, and is a member of the Lassie cow family. Lassie 521 is a favorite of ours. She is moderate framed, easy fleshing, thick made, and has a near perfect udder. The cows behind her have been outstanding as well. Her dam is Lassie 974 of Mc Cumber who sold as the top selling mature cow of our 2006 cow sale to Haywood Farms in IA, and produced the high selling bull of our 2004 sale. Lassie 521 has settled first service AI every year, and her first son sold to Gary LeDoux in ND. 882 is backed by a line of cows that has been outstanding. He is the kind that sires market topping steers, and females that will make top replacements.

Lot 007 - Maternal Production Record			
	BW	WW	YW
Lassie 521	2/100	2/105	2/104
Lassie 974	6/99	6/100	5/103
Lassie 272	11/103	11/106	11/104
Lassie 252	10/100	10/103	10/102



Lassie 521 of Mc Cumber, dam of Lot 7.



Mc Cumber 4X13 Extra 826

Lot: **8** Mc Cumber 4X13 Extra 826

Calved	Reg. #	Ind. Record	
1/21/2008	16102274	BW	73
		WW	844
		205	816
		WR	117
		ADG	3.05
		YW	1,235
		365	1,304
		YR	110
		IMF	5.63/151
		REA	11.6/99
		FAT	0.24/100

N Bar Emulation EXT	Emulation N Bar 5522
Sinclair Extra 4X13	N Bar Primrose 2424
N Bar Lady Ida S C C 2P37	N Bar Prime Time D806
	N Bar Lady Ida F1080
	A A R New Trend
Boyd New Day 8005	S V F Forever Lady 57D
Lassie 671 of Mc Cumber	Vermilion Dateline 7078
Lassie 316 of Mc Cumber	Lassie 096 of Mc Cumber

EPDs											Dam's Prod.		
BW	WW	YW	Milk	SC	IMF	REA	Fat	\$W	\$B		BW	WW	YW
-0.8	52	+92	25		+0.54	+0.02	+0.040	32.33	48.22		1/88	1/117	1/110

Selling 2/3 interest and full possession-Recommended for use on heifers- A near phenotypic replica of his sire Sinclair Extra 4X13. 826 is moderate framed, stout made, deep bodied, and long. He should be a sure shot heifer bull that started with only a 73 lb. BW and went on to wean off at 844 lbs. with a 205 day weight of 816 lbs. to ratio 117 as his dam's first calf. He earned a 365 day weight of 1304 lbs to ratio 110 and recorded the #3 IMF score of 5.63 to ratio 151. This earned him an IMF EPD of +.54 which ranks him in the top 15% of the breed for non-parent bulls. He has one of the top EPD profiles of any bull in the sale with a Calving Ease Direct of +12, BW EPD of -.8, WW EPD of +52, and YW EPD of +92. He also has a \$W of +32.33 which ranks in the top 2% of the breed for non-parent bulls. His dam is a perfect uddered, easy fleshing member of the Lassie cow family. This unique son of 4x13 combines a moderate stature with outstanding early growth, sleep all night calving ease, and carcass quality.



826 shown as a calf.



Mc Cumber 6120 Traveler 891

Lot: **9** Mc Cumber 6120 Traveler 891

Calved	Reg. #	Ind. Record	
1/31/2008	16102331	BW	98
		WW	768
		205	730
		WR	104
		ADG	3.55
		YW	1,222
		365	1,298
		YR	109
		IMF	3.37/91
		REA	14.3/122
		FAT	0.23/96

S A V 8180 Traveler 004	Sitz Traveler 8180
Mc Cumber 004 Traveler 6120	Boyd Forever Lady 8003
Erianna 2206 of Mc Cumber	Mc Cumber 6122 Equator 8113
	A R R New Trend
Mc Cumber New Trend 1206	Miss Wix 705 of Mc Cumber
B Pride 5183 of Mc Cumber	Pine Creek Right Time 1147
B Pride 275 of Mc Cumber	B Pride 0103 of Mc Cumber

EPDs											Dam's Prod.		
BW	WW	YW	Milk	SC	IMF	REA	Fat	\$W	\$B	BW	WW	YW	
4.9	44	1+83	25	1+1.03	1+.17	1+.15	1+.031	19.35	32.3	2/104	2/99	2/100	

Selling 2/3 interest and full possession- This big topped, stout rumped son of 6120 will impress you with his muscle definition. 891 is the #1 REA bull of the group with a 14.3 sq in. ribeye, which earned him a ratio of 122. Not only is 891 full of muscle but he is deep bodied, stout made, and sound on his feet and legs. He performed well across the board with a 205 day weight of 730 lbs. to ratio 104, a gain ratio of 116, and a 365 day weight of nearly 1300 lbs. to ratio 109. His dam is a moderate framed tank. She is easy fleshing, super uddered, and good footed. His Grand dam is one of the most powerful females on the ranch and produced the high gaining bull in last year's group. 891 has a little more birth weight, but put him on your cows and I would expect him to sire heavy muscled, shapely calves that will command top dollar come sale time.



Maternal brother to dam.



Mc Cumber 536P Ext 8194

Lot: **10** Mc Cumber 536P Ext 8194

Calved	Reg. #	Ind. Record	
3/2/2008	16102236	BW	97
		WW	730
		205	728
		WR	104
		ADG	3.05
		YW	1,120
		365	1,216
		YR	102
		IMF	4.89/131
		REA	12.8/109
		FAT	0.28/117

N Bar Emulation EXT	Emulation N Bar 5522
Sitz JLS Emulation Ext 536P	N Bar Primrose 2424
Ideal 4465 of 6807 4286	D H D Traveler 6807
	E E 4286 of Ideal 2240 1254
Pine Creek Right Time 1147	Leachman Right Time
Lassie 434 of Mc Cumber	Sitz Everelda Entense 1137
Lassie 2140 of Mc Cumber	BT New Trend 172K
	Lassie 914 of Mc Cumber

EPDs											Dam's Prod.		
BW	WW	YW	Milk	SC	IMF	REA	Fat	\$W	\$B	BW	WW	YW	
4.1	45	1+80	24	1+.11	1+.27	1+.09	1+.031	22.69	35.57	3/104	3/109	3/105	

Selling 2/3 interest and full possession- 8194 displays outstanding phenotype from every angle. He is thick from end to end, is big topped, and has a thick expressive rump. This March born herd bull prospect has performed well at every level with a 205 day weight of 728 to ratio 104, and a 365 day weight of 1218 to ratio 102. He is one of the top scanning bulls of the group with an IMF of 4.89 to ratio 131, and a REA of 12.8 to ratio 109. His dam is a mother of herd bulls. Her first two sons have sold through previous bulls sales for an average of \$7000. Her first son sold to Currant Creek Angus Ranch through our 2007 bull sale, and the full brother to 8194 sold last year to Chapman Cattle Co. in Canada. Lassie 434 has been an outstanding producer and has produced sons with additional REA, and excellent IMF as well. She is a thick made, deep bodied, cow with a near perfect udder, and superb feet and legs. She has been super with a WWR 3/109, YWR 3/105, IMF 3/118, and REA 3/110. Don't let his age fool you. 8194 is one of the top herd bull prospects in the sale, with a combination of style, muscle, performance, and carcass. He is definitely one to look up on sale day.



Maternal brother to Lot 10.



Mc Cumber 2700 RT Time 8102

Lot: **11** Mc Cumber 2700 RT Time 8102

Calved	Reg. #	Ind. Record	
2/1/2008	16103675	BW	93
		WW	806
		205	741
		WR	106
		ADG	3.16
		YW	1,210
		365	1,247
		YR	105
		IMF	3.56/96
		REA	11/94
		FAT	0.19/79

N Bar Emulation EXT	Emulation N Bar 5522
Leachman Right Time	N Bar Primrose 2424
Leachman Erica 0025	Tehama Bando 155
	Leachman Erica 8058
	Sitz Traveler 8180
S A V 8180 Traveler 004	Boyd Forever Lady 8003
B Pride 404 of Mc Cumber	Mc Cumber 054 Rito 326
B Pride 2010 of Mc Cumber	B Pride 5122 of Mc Cumber

EPDs										Dam's Prod.		
BW	WW	YW	Milk	SC	IMF	REA	Fat	\$W	\$B	BW	WW	YW
3.1	46	1+82	24	1+.55	1+.08	1-.08	1+.033	25.77	26.14	3/94	3/107	2/104

Selling 2/3 interest and full possession- This is the first Right Time, and one of the best we have produced. 8102 is moderate framed, deep bodied, and abounding with thickness. He weaned off his pathfinder dam at 806 lbs. with a 205 day weight of 741 to ratio 106, and had a 365 day weight of 1250 lbs. to ratio 105. His dam is one our favorite 004 daughters, and has not missed to this point. She has never missed AI, and brings in one of the top calves every year. Her production has been outstanding, as well as the cows from which she descends.

His dam has produced one other son that sold to Rustin Smith, and is working successfully in the desert country of Nevada. Her only daughter sold as a sale feature of our 2006 Female sale to Gary Leibrand in MT for \$5250 as a weaned heifer calf. B Pride 404 is in our opinion near ideal in type. She is moderate framed, thick from end to end, high volume, and has a near perfect udder. She maintains her condition extremely well and has an excellent disposition. 8102 puts together an appealing body type with an outstanding maternal heritage, top notch performance, and a super disposition.



Maternal sister of Lot 11, B Pride 613 of Mc Cumber.



Mc Cumber 4X13 Extra 8124

Photo taken this summer.

Lot: **12** Mc Cumber 4X13 Extra 8124

Calved	Reg. #	Ind. Record	
2/6/2008	16102173	BW	79
		WW	836
		205	757
		WR	108
		ADG	2.86
		YW	1,202
		365	1,215
		YR	102
		IMF	3.74/101
		REA	11.5/98
		FAT	0.25/104

N Bar Emulation EXT	Emulation N Bar 5522
Sinclair Extra 4X13	N Bar Primrose 2424
N Bar Lady Ida S C C 2P37	N Bar Prime Time D806
	N Bar Lady Ida F1080
	A A R New Trend
BT New Trend 172K	BT Everelda Entense 57D
Miss Wix 288 of Mc Cumber	Mc Cumber Stretch 604
Miss Wix 554 of Mc Cumber	Miss Wix 063 of Mc Cumber

EPDs										Dam's Prod.		
BW	WW	YW	Milk	SC	IMF	REA	Fat	\$W	\$B	BW	WW	YW
-0.2	39	1+68	26	1+.10	1+.33	1-.13	1+.040	29.69	32.44	4/90	4/106	4/102

Selling 2/3 interest and full possession- Recommended for use on heifers- This long bodied, smooth fronted son of 4x13 is a real eye catcher when you enter the pen. He is thick topped, and carries that thickness out into a wide, expressive rear end. 8124 started out at only 79 lbs. but went on to wean off his hard working dam at 836 lbs. with a 205 day weight of 757 lbs. to ratio 107 without creep. His dam is a member of the Miss Wix cow family and has settled first service AI every year. She has produced two other sons that have sold to Mike Halverson, which produced the high selling heifer calves in the 2008 Angus Partners Commercial Female Sale. The other sold to Dustin and Robin Dunlap and has been used successfully on first calf heifers. The cow line behind this bull, have all been very productive, and fertile.

Lot 012 - Maternal Production Record

	BW	WW	YW	IMF	REA	Pathfinder
Miss Wix 288	4/90	4/106	4/102			
Miss Wix 554	7/97	7/103	7/104			X
Miss Wix 063	7/99	7/106	4/107			

Lot 011 - Maternal Production Record

	BW	WW	YW	IMF	REA	Pathfinder
B Pride 404	3/94	3/107	2/104	2/103	2/105	X
B Pride 2010	5/97	5/103	5/100	5/111	5/103	
B Pride 5122	5/103	5/111	4/107	10/106	10/98	X
B Pride 274	5/104	5/106	4/104			
B Pride 387	10/100	10/100	8/98			
B Pride 937	8/108	9/113	6/111			X



Mc Cumber 2700 RT Time 813

Lot: **13** Mc Cumber 2700 RT Time 813

Calved 1/19/2008
Reg. # 16103683

N Bar Emulation EXT
Leachman Right Time
Leachman Erica 0025

Mc Cumber 054 Rito 326
B Pride 2006 of Mc Cumber
B Pride 5122 of Mc Cumber

Emulation N Bar 5522
N Bar Primrose 2424
Tehama Bando 155
Leachman Erica 8058
Rito 054 G D A R
Miss Wix 365 of Mc Cumber
Mc Cumber 124 Traveler 212
B Pride 274 of Mc Cumber

Ind. Record	
BW	90
WW	806
205	704
WR	101
ADG	3.08
YW	1,200
365	1,197
YR	101
IMF	3.48/94
REA	13.1/112
FAT	0.31/129



Leachman Right Time, sire of Lot 13

EPDs										Dam's Prod.		
BW	WW	YW	Milk	SC	IMF	REA	Fat	\$W	\$B	BW	WW	YW
2.9	35	1+63	23	1+.45	1+.07	1+.04	1+.043	23.12	10.7	4/101	4/104	4/100

Selling 2/3 interest and full possession- This bull is smooth, long, super sound, and one of the best Right Time sons we've bred to date. To go along with his eye catching good looks 813 is big topped, and thick butted. He weaned off his outstanding dam at 806 lbs. without creep, and recorded a 13.1 REA to ratio 112. This bull has caught the attention of some astute cattlemen that saw him. His dam is a moderate framed, easy fleshing, good uddered daughter of Mc Cumber 054 Rito 326. 326 was definitely the cow making son of Rito 054 out of Miss Wix 365 of Mc Cumber, and left us with many problem-free, easy fleshing, and productive daughters. His dam has never missed AI, and has been a top producer. She has produced two other sons that have sold to Paul

Lot 013 - Maternal Production Record						
	BW	WW	YW	IMF	REA	Pathfinder
B Pride 2006	4/101	4/104	4/100	4/106	4/100	
B Pride 5122	5/103	5/111	4/107	10/106	10/98	X
B Pride 274	5/104	5/106	4/104			
B Pride 387	10/100	10/100	8/98			
B Pride 937	8/108	9/113	6/111			X

Foss, and Neil and Norman Johnson for an average of \$3100. B Pride 2006 is also the Grand dam to the herd bull prospect selling as Lot 11 in this sale. The line of cows that 813 brings to the table, have been outstanding for many generations.

I would expect 813 to sire highly fertile, super uddered, problem-free females that excel in many environments. He is bred to consistently do that.



Mc Cumber 6120 Traveler 893

Lot: **14** Mc Cumber 6120 Traveler 893

Calved	Reg. #	Ind. Record	
1/31/2008	16102333	BW	97
		WW	836
		205	748
		WR	107
		ADG	3.05
		YW	1,226
		365	1,236
		YR	104
		IMF	2.75/74
		REA	12.1/103
		FAT	0.21/88

S A V 8180 Traveler 004	Sitz Traveler 8180
Mc Cumber 004 Traveler 6120	Boyd Forever Lady 8003
Erianna 2206 of Mc Cumber	Mc Cumber 6122 Equator 8113
	Erianna 880 of Mc Cumber
Pine Creek Right Time 1147	Leachman Right Time
Blackcap 267 of Mc Cumber	Sitz Everelda Entense 1137
Blackcap 0197 of Mc Cumber	Circle Oak Lucys Boy 625
	Blackcap 807 of Mc Cumber

EPDs										Dam's Prod.		
BW	WW	YW	Milk	SC	IMF	REA	Fat	\$W	\$B	BW	WW	YW
3.8	52	1+94	26	1+.72	1+.07	1+.08	1+.032	24.16	31.1	5/108	5/108	5/108

Selling 2/3 interest and full possession- 893 is a real meat wagon by 6120. He is a stout made beef bull with shape to his top, width and dimension to his rear end, and an abundance of rib and capacity. 893 broke the 800 lb. barrier at weaning and earned a 205 day weight of 748 lbs. to ratio 107. This 6120 sire group is an outstanding set of beef bulls with added performance, natural thickness, plenty of rib and consistently good from top to bottom. 893 has been favorite from the start and his dam is one of the very top cows in our herd. Blackcap 267 of Mc Cumber is a no miss female that is a high volume, thick made cow, with a near perfect udder, and excellent foot and leg structure. She has settled first service AI every year and has produced four progeny that have sold for an average of \$4000. Her son last year sold as a sale feature to Joe and Gerald Bohl for \$6750, and one of her daughters sold to Charles Dwyer in GA for \$5500 through our 2006 Female sale. She is a pathfinder with a WWR of 5/108, YWR 5/108, and a calving interval of 6/366 days. We think 893 is one of the best bulls in this sale.



Maternal brother of Lot 14.



Mc Cumber 4X13 Extra 8202

Lot: **15** Mc Cumber 4X13 Extra 8202

Calved	Reg. #	Ind. Record	
3/5/2008	16102245	BW	90
		WW	730
		205	758
		WR	108
		ADG	3.09
		YW	1,125
		365	1,252
		YR	105
		IMF	4.71/127
		REA	12.4/106
		FAT	0.27/113

N Bar Emulation EXT	Emulation N Bar 5522
Sinclair Extra 4X13	N Bar Primrose 2424
N Bar Lady Ida S C C 2P37	N Bar Prime Time D806
	N Bar Lady Ida F1080
BT Right Time 24J	Leachman Right Time
Erianna 5105 of Mc Cumber	Sitz Everelda Entense 1905
Erianna 2206 of Mc Cumber	Mc Cumber 6122 Equator 8113
	Erianna 880 of Mc Cumber

EPDs										Dam's Prod.		
BW	WW	YW	Milk	SC	IMF	REA	Fat	\$W	\$B	BW	WW	YW
1.8	46	1+83	25	1-.19	1+.46	1-.02	1+.040	27.84	42.32	2/99	2/110	2/106

Selling 2/3 interest and full possession- A March born herd bull prospect by 4X13 and a maternal brother to the \$7250 selection of Brad Gilbertson through last year's sale. A little higher BW puts him just outside of the parameters to be a heifer bull, but this long bodied, smooth fronted son of 4x13 has plenty of performance to be used on mature cows. He earned a 205 day weight of 758 lbs. to ratio 108, and recorded a 365 day weight of 1252 lbs. to ratio 105 at a year. 8202 is one of the top scanning bulls in the group with an IMF score of 4.71 to ratio 127, and a REA of 12.4 to ratio 106. 8202 puts a foot down in all four corners, is big topped and has plenty of shape to hind end. His dam is a top producing daughter of BT Right Time 24J, and a maternal sister to Mc Cumber 004 Traveler 6120. Erianna 5105 is a moderate framed, sound uddered, good milking female who has yet to miss. She has produced two calves with a WWR of 2/110, YWR 2/106, IMF 2/134, and REA 2/100. His grand dam is the outstanding donor Erianna 2206 of Mc Cumber who has ratios of WW 5/109, YW 4/113. She has been extremely fertile, and continues to be one of our top donors. 8202 is one of the youngest bulls in the sale, but has the maternal heritage, performance, and phenotype to be a top herd bull prospect.



From left: Maternal brothers 7125 and 6120 and Grand dam of Lot 15.



Mc Cumber Timberwolf 835

Lot: **16** Mc Cumber Timberwolf 835

Calved	Reg. #	Ind. Record	
1/22/2008	16102282	BW	83
		WW	778
		205	725
		WR	104
		ADG	3.38
		YW	1,210
		365	1,266
		YR	107
		IMF	4.15/112
		REA	12.7/109
		FAT	0.2/83

Wulffs Ext 6106	N Bar Emulation EXT
LT Timberwolf 5014	Wulffs Erica Dianna C116
L T Ethelda 3245	Sitz Value 7097
	L T Ethelda 9012
BT Right Time 24J	Leachman Right Time
B Pride 568 of Mc Cumber	Sitz Everelda Entense 1905
B Pride 342 of Mc Cumber	Mc Cumber 6122 Equator 8113
	B Pride 576 of Mc Cumber

EPDs										Dam's Prod.		
BW	WW	YW	Milk	SC	IMF	REA	Fat	\$W	\$B	BW	WW	YW
1.7	48	I+84	22		I+.12	I+.28	I-.007	28.38	36	2/93	2/103	2/103

Selling 2/3 interest and full possession- Recommended for use on heifers- This calving ease herd bull prospect has excelled at every measure. 835 earned a 205 day weight of 725 lbs. to ratio 104, had a gain ratio of 110 and recorded a 365 day weight of 1266 lbs. to ratio 107. He shined on the ultrasound as well with an IMF score of 4.15 to ratio 112, and a REA of 12.7 to ratio 109. 835 not only performed well at every measure but he has extra shape to his top and rear quarter, along with a sound structure and attractive profile. His dam is an easy fleshing, perfect uddered daughter of BT Right Time 24J, and is off to a good start with a BWR 2/93, WWR 2/103, YWR 2/103, IMF 2/104, and REA 2/112. 835 will be easy to find come sale day.



LT Timberwolf 5014



Mc Cumber 2700 RT Time 8112

Lot: **17** Mc Cumber 2700 RT Time 8112

Calved	Reg. #	Ind. Record	
2/3/2008	16103679	BW	98
		WW	874
		205	787
		WR	112
		ADG	2.98
		YW	1,255
		365	1,264
		YR	106
		IMF	2.36/63
		REA	13/111
		FAT	0.23/96

N Bar Emulation EXT	Emulation N Bar 5522
Leachman Right Time	N Bar Primrose 2424
Leachman Erica 0025	Tehama Bando 155
	Leachman Erica 8058
Vermilion Dateline 7078	Connealy Dateline
Miss Wix 3028 of Mc Cumber	Vermilion Blackbird 5044
Miss Wix 702 of Mc Cumber	Mc Cumber 124 Traveler 212
	Miss Wix 235 of Mc Cumber

EPDs										Dam's Prod.		
BW	WW	YW	Milk	SC	IMF	REA	Fat	\$W	\$B	BW	WW	YW
4.2	50	I+89	22	I+.39	I-.16	I+.08	I+.022	22.62	21.82	4/101	4/106	4/105

If you are looking for a big powerful beef bull 8112 might be for you. He pushed down the scale at 874 lbs. for a 205 day weight of 787 lbs. to ratio 112. He went on to earn a 365 day weight of 1264 lbs. to ratio 106, and had REA of 13 to ratio 111. 8112 is long bodied, thick made, and deep. His dam is a powerful, excellent uddered daughter of VRD, who descends from the same cow family that produced Mc Cumber Foundation 701. The cows on the maternal side of the pedigree have been outstanding for fertility, function, and productivity.

8112 is a Right Time son with extra thickness, muscle, and comes from a cow family that has gotten the job done for generations.

Lot O17 - Maternal Production Record						
	BW	WW	YW	IMF	REA	Pathfinder
Miss Wix 3028	4/101	4/106	4/105			
Miss Wix 702	5/102	5/107	2/109			
Miss Wix 235	10/108	10/104	9/104	(Dam of McCumber Foundation)		
Miss Wix 117	10/102	10/119	9/111			



Grand dam of Lot 18.

Lot: **18** Mc Cumber 6PV20 Value 8161

Calved	Reg. #	Ind. Record	
2/15/2008	16102204	BW	80
		WW	740
		205	765
		WR	109
		ADG	3.19
		YW	1,148
		365	1,275
		YR	107
		IMF	3.94/106
		REA	11.6/99
		FAT	0.22/92

Sinclair Net Present Value	N Bar Prime Time D806
Sinclair True Value 6PV20	Ideal 4465 of 6807 4286
N Bar Miss Emulous A404	N Bar Emulation Ext Z52
	N Bar Miss Emulous X3091
Boyd New Day 8005	A A R New Trend
B Pride 636 of Mc Cumber	SV F Forever Lady 57D
B Pride 463 of Mc Cumber	Pine Creek Right Time 1147
	B Pride 273 of Mc Cumber

EPDs										Dam's Prod.		
BW	WW	YW	Milk	SC	IMF	REA	Fat	\$W	\$B	BW	WW	YW
0.4	47	1+84	28		1+.36	1+.05	1+.048	30.24	38.99	1/95	1/109	1/107

Selling 2/3 interest and full possession- Recommended for use on heifers- This unique pedigreed calving ease prospect was one of the top weaning weight bulls of the calf crop. He earned a 205 day weight of 765 lbs. to ratio 109 without creep, as his dam's first calf. He performed well on test and recorded a 365 day weight of 1275 lbs. to ratio 107. 8161 is a son of Sinclair Extra Value 6PV20, who is a Net Present Value out of the dam to N Bar Primetime D806 that we purchased out of the 2007 Sinclair bull sale to clean-up our heifers. His dam is the top Boyd New Day daughter on the ranch, and is the first calf of B Pride 463, who is the dam of the herd bull prospect selling as Lot 5. B Pride 636 is a moderate framed, deep ribbed, excellent uddered female that maintains her flesh with ease. This moderated framed, thick made bull has a tremendous amount of libido and I would expect him to be able to cover a large group of females in any type of environment.



8144 is the maternal brother to Lot 18's dam.



Mc Cumber 536P Ext 8170

Lot: **19** Mc Cumber 536P Ext 8170

Calved	Reg. #	Ind. Record	
2/21/2008	16102212	BW	98
		WW	810
		205	764
		WR	109
		ADG	2.85
		YW	1,175
		365	1,220
		YR	102
		IMF	4.03/108
		REA	12.5/107
		FAT	0.23/96

N Bar Emulation EXT	Emulation N Bar 5522
Sitz JLS Emulation Ext 536P	N Bar Primrose 2424
Ideal 4465 of 6807 4286	D H D Traveler 6807
	E E 4286 of Ideal 2240 1254
BT New Trend 172K	A A R New Trend
Miss Wix 3003 of Mc Cumber	BT Everelda Entense 57D
Miss Wix 705 of Mc Cumber	Mc Cumber 124 Traveler 212
	Miss Wix 235 of Mc Cumber

EPDs										Dam's Prod.		
BW	WW	YW	Milk	SC	IMF	REA	Fat	\$W	\$B	BW	WW	YW
4.3	38	1+61	25	1+.42	1+.32	1+0	1+.015	23.13	32.78	4/108	4/99	4/97

Selling 2/3 interest and full possession- 8170 is as thick as you can make em! He is a wide based bull with a big top, and shapely rear quarter. Along with this, he is sound on his feet and legs, and moves free and easy as he travels. 8170 broke the 800 lb. barrier at weaning with an actual weaning weight of 810 lbs. and a 205 day weight of 764 lbs. to ratio 109. He excelled on ultrasound as well with an IMF score of 4.03 to ratio 108 with only .23 of Back Fat. 8170's visual muscle was confirmed by his REA of 12.5 to ratio 107. His dam is a moderate framed, good uddered daughter of BT New Trend 172K, and a member of the Miss Wix cow family. Her only other son sold to Lynn Hoffert, and two of her daughters have sold for an average of \$2000. 8170 is a solid representation of what 536P is siring. They are moderate framed cattle, with an abundance of rib, tremendous thickness, and muscle. The first daughters in production are beyond our expectations. They are moderate, easy fleshing, perfect uddered, and possess the qualities of females that should be productive for many years.



Miss Wix 705 of Mc Cumber

I would expect 8170 to excel in any environment, because he has the qualities that cattle need to thrive in all conditions.



Lot:
20 Mc Cumber 2700 RT Time 845

Calved	Reg. #	Ind. Record	
1/25/2008	16103691	BW	89
		WW	790
		205	716
		WR	102
		ADG	3.6
		YW	1,251
		365	1,292
		YR	108
		IMF	2.68/72
		REA	11.9/102
		FAT	0.18/75

N Bar Emulation EXT	Emulation N Bar 5522
Leachman Right Time	N Bar Primrose 2424
Leachman Erica 0025	Tehama Bando 155
	Leachman Erica 8058
	Sitz Traveler 8180
S A V 8180 Traveler 004	Boyd Forever Lady 8003
B Pride 461 of Mc Cumber	Mc Cumber 054 Rito 326
B Pride 2185 of Mc Cumber	B Pride 5122 of Mc Cumber

EPDs										Dam's Prod.		
BW	WW	YW	Milk	SC	IMF	REA	Fat	\$W	\$B	BW	WW	YW
3.2	43	+83	21	+58	-05	+01	+031	22.08	22.29	3/103	3/100	3/101

Selling 2/3 interest and full possession- The mating of Right Time on the 004 daughters has really worked and this bull is no exception. 845 is long, thick, deep, and combines this with top-notch stats across the board. He has an easy stride, and is one that catches your eye when you enter the pen. He earned a 205 day weight of 712 lbs. to ratio 102 and was one of the top gaining bulls in the pen with a gain ratio of 118. He weighed off test at 1250 lbs. and had a 365 day weight of nearly 1300 lbs. to 108. His dam is an outstanding daughter of 004. She is moderate framed, easy fleshing, and has an outstanding udder with small well placed teats, and excellent rear and fore udder attachment. She has never missed first service AI and is currently nursing an excellent 4x13 heifer calf. B Pride 461 is a full sister in blood to the dam of Lot 11. 845 is not only backed by an outstanding cow family, but he has the performance, body type, and easy going disposition to be a positive addition to anyones herd.



Maternal grand
sire of Lot 20.



ANGUS PARTNERS

commercial heifer sale
 Sponsored by Mc Cumber Angus Ranch and Spickler Ranch

A sale for commercial heifer calves and bred heifers that are sired by or bred to Mc Cumber Angus Ranch or Spickler Ranch bulls.

Last year's sale, held in January, was successful in returning a considerable premium to the consignors of the outstanding females offered.

Contact us if you are interested in consigning to next year's sale.

McCumber
Angus
Ranch

Chuck & Gail Tostad (701) 246-3366
 Matt & Cynthia Tostad (701) 246-3847
 Web site: mccumberangus.com

SPICKLER RANCH

Justin & Sarah Spickler (701) 674-3170
 Nathan & Emily Spickler (701) 674-3169
www.spickleranch.com



Mc Cumber 4X13 Extra 8130

Lot: **21** Mc Cumber 4X13 Extra 8130

Calved 2/7/2008 Reg. # 16102178

N Bar Emulation EXT
Sinclair Extra 4X13
N Bar Lady Ida S C C 2P37

S A V 8180 Traveler 004
Lassie 6104 of Mc Cumber
Lassie 399 of Mc Cumber

Emulation N Bar 5522
N Bar Primrose 2424
N Bar Prime Time D806
N Bar Lady Ida F1080
Sitz Traveler 8180
Boyd Forever Lady 8003
BT Traveler 228K
Lassie 830 of Mc Cumber

Ind. Record	
BW	80
WW	745
205	756
WR	108
ADG	2.97
YW	1,125
365	1,231
YR	103
IMF	4.95/133
REA	13.6/116
FAT	0.19/79



Sire of Lot 21.

Sinclair Extra 4X13



SAV 8180 Traveler 004

Maternal grand sire of Lot 21.

EPDs										Dam's Prod.		
BW	WW	YW	Milk	SC	IMF	REA	Fat	\$W	\$B	BW	WW	YW
0.6	45	1+80	26		1+.52	1+.04	1+.048	29.74	41.78	1/95	1/108	1/103

Selling 1/2 interest and full possession- Recommended for use on heifers- This long bodied, smooth made bull has a big top, and is outstanding on his feet and legs. He is not only appealing visually but puts together an outstanding set of numbers, and a super cow family which make him a potential sale topper. This calving ease herd bull prospect earned a 205 day weight of 756 lbs. to ratio 108 as his dam's first calf. He went on to scan near the top of the contemporary group in all categories with an IMF of 4.95 to ratio 133 with only .19 of back fat, and scanned near the top with a REA of 13.6 to ratio 116. He is the product of the mating that has worked so well for us, producing last year's high selling bull, and the Lot 1 bull in this sale. His dam is a beautiful 004 daughter with plenty of thickness, depth and spring of rib, and an outstanding udder. She is sound on her feet and legs and descends from a line of cows which after her include 3 consecutive generations of pathfinders and 4 out of 5 generations of females as pathfinder.

Lot 021 - Maternal Production Record

	BW	WW	YW	IMF	REA	Pathfinder
Lassie 6104	1/95	1/108	1/103	1/133	1/116	
Lassie 399	4/103	4/110	2/108	2/114	2/105	X
Lassie 830	6/101	6/106	5/106	5/126	5/101	X
Lassie 628	6/101	6/104	5/105	4/107	4/105	X
Lassie 462	5/103	5/103	4/105	4/81	4/105	
Lassie 648	10/102	10/106	9/106	3/109	3/90	X
Lassie 252	10/100	10/103	10/102			

This calving ease herd bull prospect has been outstanding at every measure along the way, and not only is excellent on paper, but is backed by a time-tested, productive cow family that has been extremely fertile and outstanding for IMF.



Maternal brothers of Lot 22.



Maternal grand dam of Lot 22.

Lot: **22** Mc Cumber Right Time 8155

Calved 2/14/2008 Reg. # 16103687

N Bar Emulation EXT
Leachman Right Time
Leachman Erica 0025

Mc Cumber Foundation 701
Rosetta 1126 of Mc Cumber
Rosetta 5002 of Mc Cumber

Emulation N Bar 5522
N Bar Primrose 2424
Tehama Bando 155
Leachman Erica 8058
Mc Cumber 124 Traveler 212
Miss Wix 235 of Mc Cumber
Tehama Bando 155
Rosetta 214 of Mc Cumber

Ind. Record	
BW	102
WW	810
205	750
WR	107
ADG	3.77
YW	1,292
365	1,353
YR	114
IMF	3.16/85
REA	12.9/110
FAT	0.3/125

EPDs										Dam's Prod.		
BW	WW	YW	Milk	SC	IMF	REA	Fat	\$W	\$B	BW	WW	YW
3.8	41	1+81	20	1+.27	1-.04	1+.03	1+.032	19.58	24.79	6/105	6/103	6/107

Selling 2/3 interest and full possession- This big, stout, rugged made son of Right Time has a tremendous amount of rib and capacity. He is thick through out and stands down wide and square on his feet and legs. He weaned off his outstanding dam a t 810 lbs. and earned a 205 day weight of 750 lbs. to ratio 107. He was one of the top gaining bulls on test with an ADG of 3.77 to ratio 123 on a 42 Mega Cal ration. He weighed off at nearly 1300 lbs. and recorded a 365 day weight of 1353 lbs. to ratio 114. His dam is an outstanding beef cow. Rosetta 1126 is a high volume, easy fleshing female with an excellent udder and outstanding feet and legs. She goes about her business year in and year out, by breeding early, and bringing in big, bloomy calves in the Fall. She has a WWR of 6/103, YWR 6/107, and a REA 6/105. She has produced 3 sons that have sold through previous bull sales to Marlin Reinhart, Bill Striefel, and Dan Birkeland. 8155 is the type of bull that can sire those heavy steers and females with the capacity to be efficient forage converters.



Mc Cumber Timberwolf 879

Lot: **23** Mc Cumber Timberwolf 879

Calved 1/30/2008 Reg. # 16102321

Wulffs Ext 6106
LT Timberwolf 5014
L T Ethelda 3245

BT Right Time 24J
Miss Wix 3154 of Mc Cumber
Miss Wix 5007 of Mc Cumber

N Bar Emulation EXT
Wulffs Erica Dianna C116
Sitz Value 7097
L T Ethelda 9012
Leachman Right Time
Sitz Everelda Entense 1905
Rito 054 G D A R
Miss Wix 365 of Mc Cumber

Ind. Record	
BW	98
WW	764
205	683
WR	98
ADG	3.52
YW	1,214
365	1,246
YR	105
IMF	2.94/79
REA	12.8/109
FAT	0.18/75

EPDs										Dam's Prod.		
BW	WW	YW	Milk	SC	IMF	REA	Fat	\$W	\$B	BW	WW	YW
3.2	40	1+77	19	1+.16	1-.03	1+.17	1+.002	21	24.14	4/98	4/97	4/100

Selling 2/3 interest and full possession- 879 is a moderate framed, heavy muscled son of LT Timberwolf 5014. He is deep bodied, free striding, and has been a favorite of mine from the start. His dam is a real tank. She is thick made, deep bodied, wide based, and one of the easiest fleshing cows on the ranch. She has produced 2 sons that have sold for an average of \$2500 to Clark Blake in SD, and Mark Hoffert. This efficient converter earned a gain ratio of 115, and I would expect him to sire efficient, heavy muscled males, and females with the ability to excel in any type of environment.



Miss Wix 3154 of Mc Cumber



Mc Cumber 6120 Traveler 8104

Lot: **24** Mc Cumber 6120 Traveler 8104

Calved	Reg. #	Ind. Record	
2/2/2008	16102159	BW	99
		WW	804
		205	765
		WR	109
		ADG	3.31
		YW	1,228
		365	1,295
		YR	109
		IMF	2.66/72
		REA	12.3/105
		FAT	0.21/88

S A V 8180 Traveler 004	Sitz Traveler 8180
Mc Cumber 004 Traveler 6120	Boyd Forever Lady 8003
Erianna 2206 of Mc Cumber	Mc Cumber 6122 Equator 8113
	Erianna 880 of Mc Cumber
	Leachman Right Time
BT Right Time 24J	Sitz Everelda Entense 1905
Miss Wix 585 of Mc Cumber	Mc Cumber 124 Traveler 212
Miss Wix 3027 of Mc Cumber	Miss Wix 5168 of Mc Cumber

EPDs										Dam's Prod.		
BW	WW	YW	Milk	SC	IMF	REA	Fat	\$W	\$B	BW	WW	YW
5.3	52	1+92	27		1+.08	1+.15	1+.031	21.63	31.02	1/112	1/109	1/109

This heavy muscled, stout made stock bull is sure to make a Lot of friends come sale day. 8104 excelled at weaning, gain, yearling, and REA with ratios of at least 105. He weaned off his dam at 804 lbs. with a 205 day weight of 765 lbs. to ratio 109. He earned a gain ratio of 108 and had a 365 day weight of nearly 1300 lbs. to ratio 109. His dam is a deep bodied, easy fleshing daughter of BT Right Time 24J, and is a member of the Miss Wix cow family. 8104 will be easy to find sale day and is the type of bull that can add pay weight to a set of calves.



Paternal Grand dam to Lot 24.



Mc Cumber 536P Ext 8199

Lot: **25** Mc Cumber 536P Ext 8199

Calved	Reg. #	Ind. Record	
3/4/2008	16102241	BW	98
		WW	760
		205	761
		WR	109
		ADG	3.16
		YW	1,165
		365	1,267
		YR	107
		IMF	3.36/90
		REA	13.1/112
		FAT	0.22/92

N Bar Emulation EXT	Emulation N Bar 5522
Sitz JLS Emulation Ext 536P	N Bar Primrose 2424
Ideal 4465 of 6807 4286	D H D Traveler 6807
	E E 4286 of Ideal 2240 1254
	Vermilion Dateline 7078
Mc Cumber 7111 Total Value	Miss Wix 7111 of Mc Cumber
Lassie 4104 of Mc Cumber	A A R New Trend 03
Lassie 0006 of Mc Cumber	Lassie 462 of Mc Cumber

EPDs										Dam's Prod.		
BW	WW	YW	Milk	SC	IMF	REA	Fat	\$W	\$B	BW	WW	YW
4.4	42	1+74	25	1-.15	1+.10	1+.24	1+.019	21.95	33.3	3/104	3/106	3/106

Selling 2/3 interest and full possession- 8199 is one of the best sons raised to date out Sitz JLS Emulation EXT 536P. He is an extremely heavy muscled bull with a Lot of pop to his top and large, shapely rear quarter. He is a loose structured bull that moves with ease and could definitely be moved up in the sale order. This March born herd sire prospect earned a 205 day weight of 761 lbs. to ratio 109, and had a 365 day weight of 1267 lbs. to ratio 107. His extra muscle shape and dimension is confirmed by the fact that he had a REA of 13.1 to ratio 112. His dam is a perfect uddered, moderate framed, super sound daughter of Mc Cumber Total Value. She has produced one son the sold for \$4000 to Bar V Ranch, and Wade Dally through our 2007 bull sale. 8199's full sister was the first daughter of 536P to calve this year and is absolutely what a beef cow should be. She has a perfect udder, is deep bodied, moderate framed, and is nursing a super heifer calf by Mc Cumber 4x13 Extra 718. She has been very productive, as well as the females behind her.

This outstanding son of 536P puts thing together extremely well. He combines performance, muscle, and soundness into an ultra complete package. He is bred to create forage efficient, problem free females, and heavy muscled, conversion oriented males.

Lot 025 - Maternal Production Record						
	BW	WW	YW	IMF	REA	Pathfinder
Lassie 4104	3/104	3/106	3/106	3/101	3/105	
Lassie 0006	7/97	7/103	5/101	5/79	5/111	
Lassie 462	5/103	5/103	4/105	4/81	4/105	
Lassie 648	10/102	10/106	9/106	3/109	3/90	X
Lassie 252	10/100	10/103	10/102			



Mc Cumber 2700 RT Time 810

Lot: **26** Mc Cumber 2700 RT Time 810

Calved	Reg. #	Ind. Record	
1/17/2008	16103674	BW	91
		WW	872
		205	758
		WR	108
		ADG	3.42
		YW	1,310
		365	1,305
		YR	110
		IMF	3.2/86
		REA	13.7/117
		FAT	0.22/92

N Bar Emulation EXT	Emulation N Bar 5522
Leachman Right Time	N Bar Primrose 2424
Leachman Erica 0025	Tehama Bando 155
	Leachman Erica 8058
	V D A R New Trend 802
A A R New Trend 03	A A R Shoshone 616
Lassie 0006 of Mc Cumber	Mc Cumber 124 Traveler 212
Lassie 462 of Mc Cumber	Lassie 648 of Mc Cumber

EPDs										Dam's Prod.		
BW	WW	YW	Milk	SC	IMF	REA	Fat	\$W	\$B	BW	WW	YW
2.1	43	+78	21	+44	-08	+19	+002	25.19	26.64	7/97	7/103	5/101

Selling 2/3 interest and full possession- This big, stout, heavy muscled Right Time son has a ton of performance, and one of the largest REA in the sale. 810 weaned off at 872 lbs. without creep to earn a 205 day weight of 758 lbs. to ratio 108. He had a gain ratio of 112, and weighed off test at 1310 lbs. with a 365 day weight of 1305 lbs. to ratio 110. He had an actual REA of 14.2, and recorded an adjusted REA of 13.7 to ratio 117. His dam is an outstanding member of the Lassie cow family, and is the Grand dam to the herd sire prospect selling as Lot 25. Lassie 0006 consistently adds REA to her progeny as is a super uddered, moderate framed, easy fleshing female. She has produced two daughters that have sold to Hillsview Angus Ranch in SD, and the Crider Ranch for an average of \$2250. 810 will not be hard to find on sale day!

Sale Day Telephones

701.246.3366
701.871.9800
701.871.1072

Or Contact Superior Productions at
1-800-431-4452 to pre-register for a buyer's
number and gain access to the bid line number.



Mc Cumber 4X13 Extra 8037

Lot: **27** Mc Cumber 4X13 Extra 8037

Calved	Reg. #	Ind. Record	
1/27/2008	16266342	BW	70
		WW	724
		205	761
		WR	122
		ADG	2.78
		YW	1,150
		365	1,206
		YR	111
		IMF	4.35/119
		REA	13.1/117
		FAT	0.26/118

N Bar Emulation EXT	Emulation N Bar 5522
Sinclair Extra 4X13	N Bar Primrose 2424
N Bar Lady Ida S C C 2P37	N Bar Prime Time D806
	N Bar Lady Ida F1080
	Sitz Traveler 8180
S A V 8180 Traveler 004	Boyd Forever Lady 8003
Blackcap 696 of Mc Cumber	Mc Cumber 054 Rito 5009
Blackcap 738 of Mc Cumber	Blackcap 339 of Mc Cumber

EPDs										Dam's Prod.		
BW	WW	YW	Milk	SC	IMF	REA	Fat	\$W	\$B	BW	WW	YW
-1.1	+48	+83	+19		+39	+0	+052	33.15	38.22	1/87	1/114	1/106

Selling 2/3 interest and full possession- Recommended for use on heifers- I don't know if his picture does him justice, but this is one of the very best sons of 4x13 in this sale. 8037 is extremely long bodied, wide based, and heavy muscled. He is super on his feet and legs and moves out with ease as he travels. This sure shot calving ease herd bull prospect has been a standout since birth. He started with only a 70 lb. birth weight and weaned off at 724 lbs. on September 7th without any creep. He combines an extremely low BW EPD of -1.1 with a WW EPD of +48, and YW EPD of +80. To go along with this he scanned exceptionally well for both IMF and REA area with an IMF score of 4.35 to ratio 119, and a REA of 13.1 to ratio 117. His dam is a moderate framed, easy fleshing, perfect uddered daughter of 004, and bred back quickly while raising this calf. 8037 puts it all together, calving ease, outstanding performance, tremendous carcass and a dam that is off to a super start. His outstanding stats combined with the ability to sire females that will work in the real world make him a definite sale highlight.



Sire of Lot 27.



Mc Cumber 551 T Value 884

Lot: **28** Mc Cumber 551 T Value 884

Calved	Reg. #	Ind. Record	
1/31/2008	16102326	BW	97
		WW	760
		205	681
		WR	97
		ADG	3.61
		YW	1,222
		365	1,259
		YR	106
		IMF	3.85/103
		REA	12.3/105
		FAT	0.37/154

Mc Cumber 7111 Total Value	Vermilion Dateline 7078
Mc Cumber Total Value 551	Miss Wix 7111 of Mc Cumber
B Pride 9124 of Mc Cumber	Sitz Traveler 9929
	B Pride 839 of Mc Cumber
Mc Cumber Powertrain HC 1025	Papa Equator 2928
Gale 244 of Mc Cumber	Rosetta 048 of Mc Cumber
Gale 948 of Mc Cumber	Mc Cumber 124 Traveler 212
	Gale 5101 of Mc Cumber

EPDs										Dam's Prod.		
BW	WW	YW	Milk	SC	IMF	REA	Fat	\$W	\$B	BW	WW	YW
4.4	41	1+78	21	1+.41	1+.09	1+.18	1+.019	18.84	29.48	5/106	5/102	4/104

Here is a real load by Mc Cumber 209 Total Value 551. 884 is one of the deepest bodied bulls in this sale and combines that with a moderate frame, and natural thickness. He earned a 365 day weight of 1259 lbs. to ratio 106, had a gain ratio of 118 and ratioed 103 for IMF and 105 for REA. His dam is a high volume, good uddered daughter of Mc Cumber Powertrain 1025. She has never missed AI and has a WWR of 5/102, and a YWR of 4/104. Her only other son sold last year to Gary Johnson. His grand dam was a powerful daughter of 212 that sold to Tate Angus in LA as sale feature of our 2003 female sale.



Gale 948, grand dam of Lot 28.



Miss Wix 352 of Mc Cumber



Clockwise from top: Dam of Lot 29, Grand dam of Lot 29 and Great grand dam of Lot 29

Lot: **29** Mc Cumber 2700 RT Time 8133

Calved	Reg. #	Ind. Record	
2/8/2008	16103684	BW	82
		WW	750
		205	683
		WR	98
		ADG	2.93
		YW	1,125
		365	1,152
		YR	97
		IMF	2.09/56
		REA	10.2/87
		FAT	0.2/83

N Bar Emulation EXT	Emulation N Bar 5522
Leachman Right Time	N Bar Primrose 2424
Leachman Erica 0025	Tehama Bando 155
	Leachman Erica 8058
	Finks 5522-6148
Garrison 8128 Dynamite	Miss Wix 204 of Mc Cumber
Miss Wix 2027 of Mc Cumber	K M A Highroller 5025
Miss Wix 352 of Mc Cumber	Miss Wix 098 of Mc Cumber

EPDs										Dam's Prod.		
BW	WW	YW	Milk	SC	IMF	REA	Fat	\$W	\$B	BW	WW	YW
1.3	42	1+71	24	1+.29	1-.10	1-.09	1+.017	29.57	11.26	5/97	5/107	5/105

Selling 2/3 interest and full possession- Recommended for use on heifers- A Right Time son with the maternal heritage to sire outstanding females that will be perfect uddered, moderate framed, easy fleshing, and adaptable to any environment. 8133 had navel infection as a calf and it has set him back a bit, but I would expect him to be a no miss female maker. His dam is the outstanding pathfinder donor cow Miss Wix 2027, who is one of the top cows that ever roamed our pastures. She is a 6th consecutive generation pathfinder and is one of the most fertile cows on the place. Miss Wix 2027 has produced 2 sons that have sold for an average of \$8000 to Brad Gilbertson, and North Star Angus Ranch in ND. Not only has 2027 and the cows that preceded her been productive and fertile, but her 2 daughters are off to a tremendous start as well. They have a combined BWR of 2/87, WWR 2/113, YWR 2/108, and REA 2/114. Her 004 daughter is the dam to the herd sire prospect selling as Lot 1 in this sale. This productive, fertile, long lived line of cows has been at the top for many generations.

Although 8133 was set back, he descends from a line of cows that is know for producing cattle that not only demand top dollar, but excel for fertility, productivity, and longevity.

Lot 029 - Maternal Production Record						
	BW	WW	YW	IMF	REA	Pathfinder
Miss Wix 2027	5/97	5/107	5/105	6/102	6/105	X
Miss Wix 352	7/99	7/108	5/104	17/96	17/98	X
Miss Wix 098	6/106	6/106	6/106	7/94	7/103	X
Miss Wix 365	10/102	10/106	7/108	12/102	12/103	X
Miss Wix 294	12/107	12/113	12/109			X
Miss Wix 682	10/105	10/112	10/111			x

Lot: **30** Mc Cumber 4X13 Extra 817

Calved 1/20/2008 Reg. # 16102211

N Bar Emulation EXT
Sinclair Extra 4X13
N Bar Lady Ida S C C 2P37

Mc Cumber 7111 Total Value
Blackcap 6139 of Mc Cumber
Blackcap 015 of Mc Cumber

Emulation N Bar 5522
N Bar Primrose 2424
N Bar Prime Time D806
N Bar Lady Ida F1080
Vermilion Dateline 7078
Miss Wix 7111 of Mc Cumber
Mc Cumber 71 Traveler 7114
Blackcap 8165 of Mc Cumber

Ind. Record	
BW	77
WW	752
205	736
WR	105
ADG	3.28
YW	1,172
365	1,261
YR	106
IMF	5.48/147
REA	11.1/95
FAT	0.3/125

EPDs										Dam's Prod.		
BW	WW	YW	Milk	SC	IMF	REA	Fat	\$W	\$B	BW	WW	YW
0.5	40	+71	24		+53	-10	+041	28.7	35.21	1/92	1/105	1/106

Recommended for use on heifers- 817 is a super long, smooth fronted son of 4x13 that performed well across the board. He started at 77 lbs. and earned a 205 day weight of 736 lbs. to ratio 105, had a 365 day weight of 1261 lbs. to ratio 106. Along with this he scanned the #4 IMF of 5.48 to ratio 147. His IMF EPD of +.53 ranks him in the top 15% of the breed for non-parent bulls. His moderate framed, perfect uddered dam traces to Miss Wix 365 of Mc Cumber 3 times in 5 generations and is a member of Blackcap cow family.

Lot: **31** Mc Cumber 513 Traveler 851

Calved 1/25/2008 Reg. # 16102295

S A V 8180 Traveler 004
Mc Cumber 004 Traveler 513
Miss Wix 301 of Mc Cumber

Vermilion Dateline 7078
Miss Wix 365 of Mc Cumber
Miss Wix 843 of Mc Cumber

Sitz Traveler 8180
Boyd Forever Lady 8003
Leachman Right Time
Miss Wix 1119 of Mc Cumber
Connealy Dateline
Vermillion Blackbird 5044
Mc Cumber 953 Rito 420
Miss Wix 6101 of Mc Cumber

Ind. Record	
BW	91
WW	802
205	709
WR	101
ADG	3.73
YW	1,280
365	1,306
YR	110
IMF	2.11/57
REA	12.5/107
FAT	0.27/113

EPDs										Dam's Prod.		
BW	WW	YW	Milk	SC	IMF	REA	Fat	\$W	\$B	BW	WW	YW
2.7	44	+94	22	+38	-05	+19	+042	20.02	28.26	3/98	3/101	3/106

This big footed, stout made son of Mc Cumber 004 Traveler 513 is a cowboy's type of bull. He is deep bodied, thick made and rugged. He hit 800 lbs. at weaning and was one of the top gaining bulls on test with a gain ratio of 122. He weighed off test at 1280 lbs. and earned a 365 day weight of 1306 to ratio 110. His dam is a powerful daughter of VRD, with an abundance of rib, loads of thickness, and a big well shaped hoof. In addition to this she and the cows behind her have been excellent producers. After her dam, who had a WWR of 7/104, the next four cows were all pathfinders. 851's dam has never missed AI, and produced one son that sold to David Kraft in last year's bull sale.

Sire of Lot 31.



Mc Cumber 004 Traveler 513



Mc Cumber Right Time 517

Maternal brother of Lot 32.

Lot: **32** Mc Cumber 004 Traveler 873

Calved 1/29/2008 Reg. # 16102315

Sitz Traveler 8180
S A V 8180 Traveler 004
Boyd Forever Lady 8003

Mc Cumber Foundation 701
B Pride 0103 of Mc Cumber
B Pride 786 of Mc Cumber

G D A R Traveler 71
Sitz Everelda Entense 1137
A A R New Trend
S V F Forever Lady 57D
Mc Cumber 124 Traveler 212
Miss Wix 235 of Mc Cumber
V D A R Rito 953
B Pride 274 of Mc Cumber

Ind. Record	
BW	94
WW	760
205	757
WR	108
ADG	3.5
YW	1,208
365	1,317
YR	111
IMF	3.51/94
REA	12.7/109
FAT	0.35/146

EPDs										Dam's Prod.		
BW	WW	YW	Milk	SC	IMF	REA	Fat	\$W	\$B	BW	WW	YW
+4.5	+42	+80	+26	+1.29	+16	+0	+060	19.04	28.16	6/111	6/105	6/102

This is the first 004 in the offering and is a heavy muscled, deep bodied, beef bull. He is a twin to the bull selling as Lot 95 in this sale. He and his brother, who were both raised by their dam combined to wean off at over 1400 lbs. 873 weaned off at 760 lbs. and earned a 205 day weight of 757 lbs to ratio 108. He gained well on feed and recorded a 365 day weight of 1317 lbs. to ratio 111. His dam has been an excellent producer with a WWR 6/105, and a YWR 6/102. She has produced sons that have sold to Wayne Kukla, Lynn Haugen, Russel Lunde, and Randy Smith. There are not very many direct 004 sons in the sale, but this is one of the best.



SAV 8180 Traveler 004

Lot:

33 Mc Cumber Timberwolf 8145

Calved 2/11/2008	Reg. # 16102190	Ind. Record	
		BW	91
		WW	726
		205	685
		WR	98
		ADG	3.31
		YW	1,150
		365	1,215
		YR	102
		IMF	2.76/74
		REA	12/103
		FAT	0.21/88

Wulffs Ext 6106
LT Timberwolf 5014
L T Ethelda 3245

N Bar Emulation EXT
Wulffs Erica Dianna C116
Sitz Value 7097
L T Ethelda 9012
Tehama Bando 155
Miss Wix 365 of Mc Cumber
Hilltop Rito H218
Miss Wix 765 of Mc Cumber

Mc Cumber 155 Bando 214
Miss Wix 4109 of Mc Cumber
Miss Wix 0192 of Mc Cumber

EPDs										Dam's Prod.		
BW	WW	YW	Milk	SC	IMF	REA	Fat	\$W	\$B	BW	WW	YW
2	40	+73	21		+0.01	+0	-0.009	25.14	21.88	2/96	2/106	2/103

A moderate framed, long bodied, thick topped son of LT Timberwolf 5014. 8145 is a moderate birth weight bull that falls outside our parameters for a heifer bull. He displays extra muscle expression to his rear quarter, and is a free moving, sound footed bull. His dam is a moderate framed, extremely easy fleshing daughter of Mc Cumber 155 Bando 214. She is one of the thickest, deepest bodied cows on the ranch. In addition to this she has an excellent udder, has never missed by AI, and is a very good producer with a BWR 2/96, WWR 2/106, YWR 2/103, and REA 2/115.

Lot:

34 Mc Cumber 513 Traveler 812

Calved 1/18/2008	Reg. # 16102170	Ind. Record	
		BW	72
		WW	718
		205	703
		WR	100
		ADG	3.44
		YW	1,158
		365	1,253
		YR	105
		IMF	3.15/85
		REA	11.3/97
		FAT	0.18/75

S A V 8180 Traveler 004
Mc Cumber 004 Traveler 513
Miss Wix 301 of Mc Cumber

Sitz Traveler 8180
Boyd Forever Lady 8003
Leachman Right Time
Miss Wix 1119 of Mc Cumber
Sitz Value 7097
Sitz Barbaramere Nell 1590
Mc Cumber New Trend 1206
Miss Wix 0001 of Mc Cumber

Sitz Triangle S Valubull
Miss Wix 632 of Mc Cumber
Miss Wix 4205 of Mc Cumber

EPDs										Dam's Prod.		
BW	WW	YW	Milk	SC	IMF	REA	Fat	\$W	\$B	BW	WW	YW
-1.2	36	+76	24		+1.11	+1.11	+0.024	25.48	24.44	1/86	1/100	1/105

Selling 2/3 interest and full possession- Recommended for use on heifers- This big rumped, super stylish son of Mc Cumber 004 Traveler 513 is sure to catch your eye. 812 should be a sure thing heifer bull with a BW of 72 lbs. CED of +12, and a BW EPD of -1.1. Along with this 812 weaned off with a 205 day weight of 703 lbs. to ratio 100 as his dam's first calf. He gained well on test with a gain ratio of 112, and earned a 365 day weight of 1253 lbs. to ratio 105. His dam is a perfect uddered, easy fleshing, moderate framed daughter of Sitz Triangle S Valubull 9802. 812 will surely catch your eye with his attractive profile, and extra muscle expression, but in addition to this he should be a sure thing on heifers, and have extra performance.



Mc Cumber 513 Traveler 812



Above: Maternal brother of Lot 35.



Right: Dam of Lot 35.

Lot:

35 Mc Cumber Right Time 8020

Calved 2/17/2008	Reg. # 16103669	Ind. Record	
		BW	96
		WW	778
		205	726
		WR	100
		ADG	3.3
		YW	1,200
		365	1,254
		YR	100
		IMF	3.33/92
		REA	13.4/120
		FAT	0.22/96

N Bar Emulation EXT
Leachman Right Time
Leachman Erica 0025

Emulation N Bar 5522
N Bar Primrose 2424
Tehama Bando 155
Leachman Erica 8058
Mc Cumber Equator 6122
Rosetta 421 of Mc Cumber
Mc Cumber 124 Traveler 212
Erianna 250 of Mc Cumber

Mc Cumber 6122 Equator 8113
Erianna 2206 of Mc Cumber
Erianna 880 of Mc Cumber

EPDs										Dam's Prod.		
BW	WW	YW	Milk	SC	IMF	REA	Fat	\$W	\$B	BW	WW	YW
+3.1	+44	+85	+25	+0.32	+0.08	+0.13	+0.013	25.29	35.58	5/106	5/109	4/113

Selling 2/3 interest and full possession- This stout made, heavy muscled son of Leachman Right Time is a maternal brother to the 2007 High selling bull Mc Cumber 004 Traveler 6120. 8020 weaned off his recipient dam at 778 lbs. and earned a 365 day weight of 1254 lbs. He had a REA of 13.4 to ratio 120, which confirms the added muscle shape to his top. His outstanding pathfinder dam is extremely fertile, excellent uddered, and easy fleshing. She stands on big well shaped hoof, settles AI every year, and consistently weans one of the heaviest calves in the Fall. She has two daughters in production. The oldest is the dam to the Lot 15 bull, and has a WWR 2/110, YWR 2/106, IMF 2/134, and REA 2/100. Her other daughter sired by Mc Cumber Tradition 383 is nursing her first calf, and has a beautiful udder with small well placed teats. Erianna 2206 has produced two sons that have sold for an average of \$7250 to Red Rock Ranch, and Kemnitz Angus Ranch in SD. 8020 should be a no miss female sire, but also has plenty of performance, muscle, and stoutness to sire males that are equally impressive.



Mc Cumber Timberwolf 883

Lot:
36 Mc Cumber Timberwolf 883

Calved 1/30/2008 Reg. # 16102325

Wulffs Ext 6106
LT Timberwolf 5014
L T Ethelda 3245

Hilltop Rito H218
Lassie 0139 of Mc Cumber
Lassie 708 of Mc Cumber

N Bar Emulation EXT
Wulffs Erica Dianna C116
Sitz Value 7097
L T Ethelda 9012
Mc Cumber 054 Rito 5009
G P Blackbird 1901
Mr Wix of Mc Cumber 204
Lassie 5128 of Mc Cumber

Ind. Record	
BW	104
WW	848
205	758
WR	108
ADG	3.19
YW	1,256
365	1,268
YR	106
IMF	3.71/100
REA	10.1/86
FAT	0.49/204

EPDs										Dam's Prod.		
BW	WW	YW	Milk	SC	IMF	REA	Fat	\$W	\$B	BW	WW	YW
5	49	1+89	20	1+.38	1+.13	1-.14	1+.034	19.67	30.37	7/107	7/108	7/107

This top performer by Timberwolf is deep bodied, and extremely sound on his feet and legs. 883 pushed the scale down at 848 lbs. to earn a 205 day weight of 758 lbs. and ratio 108. He weighed off test at 1256 lbs. and recorded a 365 day weight of 1268 lbs. to ratio 106. His top producing pathfinder dam has recorded a WWR 7/108, and a YWR 7/107. She has produced five sons that have sold for an average of nearly \$3000 dollars to Lloyd Hussey, Arlen Vollmer, and Bruce Diebold in ND, Steve and Rebecca Moe in MN, and Rustin Smith in NV.



Mc Cumber 4X13 Extra 8179

Lot:
37 Mc Cumber 4X13 Extra 825

Calved 1/21/2008 Reg. # 16102273

N Bar Emulation EXT
Sinclair Extra 4X13
N Bar Lady Ida S C C 2P37

Mc Cumber 7078 VRD 3108
Gale 6206 of Mc Cumber
Gale 9120 of Mc Cumber

Emulation N Bar 5522
N Bar Primrose 2424
N Bar Prime Time D806
N Bar Lady Ida F1080
Vermilion Dateline 7078
Lassie 974 of Mc Cumber
Mc Cumber Foundation 701
Gale 6169 of Mc Cumber

Ind. Record	
BW	77
WW	704
205	696
WR	99
ADG	3.14
YW	1,106
365	1,198
YR	100
IMF	5.17/139
REA	11.9/102
FAT	0.26/108

EPDs										Dam's Prod.		
BW	WW	YW	Milk	SC	IMF	REA	Fat	\$W	\$B	BW	WW	YW
1	32	1+68	21		1+.44	1-.17	1+.030	22.59	29.25	1/92	1/99	1/100

Recommended for use on heifers- This calving ease son of 4x13 is moderate framed, naturally thick, and excellent on his feet and legs. He started at only 77 lbs. but went on to wean off his dam at 704 lbs. as her first calf. In addition to this he had an IMF score of 5.17 to ratio 139, and was above average for REA with a ratio of 102. His dam is an easy fleshing, super uddered female that is double bred to Mc Cumber Foundation 701. Not only should 825 be an easy calving bull, but I would expect him to consistently add marbling to a set of calves without sacrificing muscle or performance.

Lot:
38 Mc Cumber 4X13 Extra 8179

Calved 2/24/2008 Reg. # 16102220

N Bar Emulation EXT
Sinclair Extra 4X13
N Bar Lady Ida S C C 2P37

Leachman Right Time
B Pride 593 of Mc Cumber
B Pride 151 of Mc Cumber

Emulation N Bar 5522
N Bar Primrose 2424
N Bar Prime Time D806
N Bar Lady Ida F1080
N Bar Emulation EXT
Leachman Erica 0025
Mc Cumber Foundation 701
B Pride 613 of Mc Cumber

Ind. Record	
BW	88
WW	700
205	708
WR	101
ADG	3.01
YW	1,085
365	1,190
YR	100
IMF	4.35/117
REA	11.6/99
FAT	0.25/104

EPDs										Dam's Prod.		
BW	WW	YW	Milk	SC	IMF	REA	Fat	\$W	\$B	BW	WW	YW
1.7	40	1+75	21		1+.34	1-.12	1+.038	25.33	31.19	2/96	2/99	2/99

Selling 2/3 interest and full possession- Recommended for use on heifers- Stylish, long, heavy muscled, and sound are all terms that could be used to describe this top-notch son of 4x13. While average on performance, average would be the last term used to describe the type of females this bull should sire. 8179 is a moderate framed, long bodied bull with a Lot of shape to his top which he carries out into a square, well defined rear quarter. His dam is a beautiful daughter of Right Time with a flawless udder, depth of rib, plenty of thickness, and sound feet and legs. We have found this mating of 4x13 back on Right Time daughters to be very successful. It not only has yielded outstanding females but the male counterparts have been very good as well. This bull comes highly recommended for producing excellent females, along with males that are moderate framed, extremely sound, adaptable to an array of environments, and possess plenty of performance, muscle and marbling.

Lot: **39** Mc Cumber Timberwolf 833

Calved 1/22/2008	Reg. # 16102280	Ind. Record	
		BW	92
		WW	788
		205	771
		WR	110
		ADG	2.86
		YW	1,154
		365	1,229
		YR	103
		IMF	2.94/79
		REA	11.6/99
		FAT	0.19/79

Wulffs Ext 6106
LT Timberwolf 5014
L T Ethelda 3245

N Bar Emulation EXT
Wulffs Erica Dianna C116
Sitz Value 7097
L T Ethelda 9012
Mc Cumber Equator 6122
Rosetta 162 of Mc Cumber
Vermilion Dateline 7078
Miss Wix 5007 of Mc Cumber

Mc Cumber 6122 Equator 419
Miss Wix 681 of Mc Cumber
Miss Wix 203 of Mc Cumber

EPDs											Dam's Prod.		
BW	WW	YW	Milk	SC	IMF	REA	Fat	\$W	\$B	BW	WW	YW	
3.5	50	1+88	22		1+0	1+.15	1-.004	24.88	27.52	1/108	1/110	1/103	

This rugged, naturally thick, moderate framed son of Timberwolf nearly broke the 800 lb. barrier at weaning as his dam's first calf. 833 earned a 205 day weight of 771 lbs. to ratio 110, and recorded a 365 day weight of 1229 lbs. to ratio 103. His dam is an easy fleshing, deep bodied, thick made female that weaned off well over 50% of her body weight.



Great grand dam of Lot 39, Miss Wix 5007

Lot: **40** Mc Cumber Timberwolf 8152

Calved 2/13/2008	Reg. # 16102197	Ind. Record	
		BW	86
		WW	760
		205	702
		WR	100
		ADG	2.88
		YW	1,128
		365	1,163
		YR	98
		IMF	3.63/98
		REA	12.5/107
		FAT	0.2/83

Wulffs Ext 6106
LT Timberwolf 5014
L T Ethelda 3245

N Bar Emulation EXT
Wulffs Erica Dianna C116
Sitz Value 7097
L T Ethelda 9012
Connealy Dateline
Vermilion Blackbird 5044
Circle Oak Lucys Boy 625
Lassie 801 of Mc Cumber

Vermilion Dateline 7078
Lassie 316 of Mc Cumber
Lassie 096 of Mc Cumber

EPDs											Dam's Prod.		
BW	WW	YW	Milk	SC	IMF	REA	Fat	\$W	\$B	BW	WW	YW	
1.6	46	1+84	23		1+.16	1+.08	1-.002	27.11	33.57	2/93	3/108	3/106	

Recommended for use on heifers- 8152 is a smooth fronted, long bodied bull with plenty of rib and a big shapely top. He had a REA of 12.5 to ratio 107 and is excellent on his feet and legs. His dam is a high volume, good uddered daughter of VRD with a ton of thickness. She has never missed by AI, and has produced two daughters. Her first daughter sold to Lee Colley III through our 2006 female sale for \$6750 and her other daughter was retained and is the dam to the 4x13 son selling as Lot 8. Her production has been top-notch with a BWR 3/93, WWR 3/108, YWR 3/106, IMF 3/113, and REA 3/110.



Sire of Lot 41.

Lot: **41** Mc Cumber 4X13 Extra 8195

Calved 3/2/2008	Reg. # 16102237	Ind. Record	
		BW	85
		WW	720
		205	700
		WR	100
		ADG	3.01
		YW	1,105
		365	1,182
		YR	99
		IMF	3.3/89
		REA	12.5/107
		FAT	0.23/96

N Bar Emulation EXT
Sinclair Extra 4X13
N Bar Lady Ida S C C 2P37

Emulation N Bar 5522
N Bar Primrose 2424
N Bar Prime Time D806
N Bar Lady Ida F1080
Rito 054 G D A R
Miss Wix 365 of Mc Cumber
Mc Cumber 124 Traveler 212
B Pride 274 of Mc Cumber

Mc Cumber 054 Rito 326
B Pride 2010 of Mc Cumber
B Pride 5122 of Mc Cumber

EPDs											Dam's Prod.		
BW	WW	YW	Milk	SC	IMF	REA	Fat	\$W	\$B	BW	WW	YW	
0.8	33	1+60	25	1+0	1+.33	1-.04	1+.025	26.71	29.95	5/97	5/103	5/100	

Selling 2/3 interest and full possession- Recommended for use on heifers- A moderate framed, naturally thick son of 4x13 with a masculine beef bull look and extra shape and expression to his top. This March born son of 4x13 weaned off right at 700 lbs. and had a REA of 12.5 to ratio 107. His dam is an easy fleshing, excellent uddered daughter of Mc Cumber 054 Rito 326. She has been a very fertile, top producing cow and descends from a line of cows that have been equally impressive.

I would expect 8195 to sire the type of cattle that will thrive in any environment. Not only does he display the body type that succeeds under harsh conditions, but the genetics behind him are proven to work in those conditions as well.

Lot 041 - Maternal Production Record						
	BW	WW	YW	IMF	REA	Pathfinder
B Pride 2010	5/97	5/103	5/100	5/111	5/103	
B Pride 5122	5/103	5/111	4/107	10/106	10/98	X
B Pride 274	5/104	5/106	4/104			
B Pride 387	10/100	10/100	8/98			
B Pride 937	8/108	9/113	6/111			X



Mc Cumber 383 Tradition 854

Lot: **42** Mc Cumber 383 Tradition 854

Calved	Reg. #	Ind. Record	
1/26/2008	16102298	BW	96
		WW	824
		205	730
		WR	104
		ADG	2.95
		YW	1,202
		365	1,202
		YR	101
		IMF	2.92/78
		REA	12.4/106
		FAT	0.25/104

Leachman Right Time	N Bar Emulation EXT
Mc Cumber Tradition 383	Leachman Erica 0025
Lassie 7015 of Mc Cumber	Mc Cumber 124 Traveler 212
	Lassie 648 of Mc Cumber
	Papa Equator 2928
Mc Cumber Powertrain HC 1025	Rosetta 048 of Mc Cumber
Miss Wix 1101 of Mc Cumber	Mc Cumber 124 Traveler 212
Miss Wix 6101 of Mc Cumber	Miss Wix 0105 of Mc Cumber

EPDs											Dam's Prod.		
BW	WW	YW	Milk	SC	IMF	REA	Fat	\$W	\$B		BW	WW	YW
5	40	1+78	21	1+.29	1+.02	1+.05	1+.029	17.18	21.16		6/105	6/104	6/102

Selling 2/3 interest and full possession- 854 is an outstanding son of Mc Cumber Tradition 383 that weaned off his dam at 824 lbs. without creep and earned a 205 day weight of 730 lbs. to ratio 104. He is a stout made, deep bodied, big scrotaled bull that exhibits extra shape to his top which is backed up by the fact that he scanned a REA of 12.4 to ratio 106. His dam is a sound footed, thick made female with an abundance of capacity and an outstanding record to this point. The cows behind her have been outstanding and include 4 consecutive generations of pathfinder females. 854 is backed by multiple generations of females that have been unparalleled for fertility, productivity, and longevity.

Lot 042 - Maternal Production Record

	BW	WW	YW	IMF	REA	Pathfinder
Miss Wix 1101	6/105	6/104	6/102	6/100	6/97	
Miss Wix 6101	9/105	9/112	8/110	6/107	6/105	X
Miss Wix 0105	8/106	8/108	7/109			X
Miss Wix 128	12/112	12/109	11/107			X
Miss Wix 187	14/101	14/102	14/103			X
Miss Wix 855	10/104	10/104	9/105			
Miss Wix 682	10/105	10/112	10/111			X

Miss Wix 682 is the maternal grand dam to Miss Wix 365.

Lot: **43** Mc Cumber Timberwolf 888

Calved	Reg. #	Ind. Record	
1/31/2008	16102328	BW	89
		WW	746
		205	747
		WR	107
		ADG	3.35
		YW	1,175
		365	1,283
		YR	108
		IMF	3.07/83
		REA	12.1/103
		FAT	0.16/67

Wulffs Ext 6106	N Bar Emulation EXT
LT Timberwolf 5014	Wulffs Erica Dianna C116
L T Ethelda 3245	Sitz Value 7097
	L T Ethelda 9012
	Sitz Value 7097
Sitz Triangle S Valubull	Sitz Barbaramere Nell 1590
Lady Barbola 621 Mc Cumber	BT New Trend 172K
Lady Barbola 4148 Mc Cumber	Lady Barbola 171 Mc Cumber

EPDs											Dam's Prod.		
BW	WW	YW	Milk	SC	IMF	REA	Fat	\$W	\$B		BW	WW	YW
1.9	47	1+86	24		1+.05	1+.09	1-.016	26.98	32.18		1/105	1/107	1/108

This is a LT Timberwolf son you definitely don't want to miss. 888 weaned off his dam with a 205 day weight of 747 lbs. to ratio 107, had a gain ratio of 109 and earned a 365 day weight of 1283 lbs. to ratio 108. Along with this 888, is a long bodied, wide based bull with natural thickness, and plenty of muscle. His dam is a deep bodied, easy fleshing female with thickness, and good feet and legs. His dam and the cows behind her have been top producers. His great grand dam is one of the top Foundation daughters on the ranch.

Lot 043 - Maternal Production Record

	BW	WW	YW	IMF	REA
Lady Barbola 621	1/105	1/107	1/108	1/83	1/103
Lady Barbola 4148	3/102	3/106	2/108	2/98	2/114
Lady Barbola 171	6/105	6/104	6/103	6/92	6/103
Lady Barbola 684	6/99	6/101	4/103	4/91	4/93



Mc Cumber 2700 RT Time 8105

Lot:

44 Mc Cumber 2700 RT Time 8105

Calved	Reg. #	Ind. Record	
2/2/2008	16103677	BW	94
		WW	734
		205	703
		WR	100
		ADG	3.21
		YW	1,145
		365	1,217
		YR	102
		IMF	3.55/95
		REA	12/103
		FAT	0.18/75

N Bar Emulation EXT	Emulation N Bar 5522
Leachman Right Time	N Bar Primrose 2424
Leachman Erica 0025	Tehama Bando 155
	Leachman Erica 8058
	Sitz Traveler 8180
S A V 8180 Traveler 004	Boyd Forever Lady 8003
Miss Wix 5017 of Mc Cumber	Mc Cumber 124 Traveler 212
Miss Wix 702 of Mc Cumber	Miss Wix 235 of Mc Cumber

EPDs										Dam's Prod.		
BW	WW	YW	Milk	SC	IMF	REA	Fat	\$W	\$B	BW	WW	YW
4.1	42	1+81	22		1+.05	1-.03	1+.036	19.43	22.36	2/105	2/104	2/105

Selling 2/3 interest and full possession- This ¾ brother to Lots 11, and 20 come from the same mold. 8105 is a deep bodied wide made son of Right Time, with a large scrotum and moves free and easy as he travels. He performed well across the board, and combines this with an outstanding maternal heritage. His beautiful, perfect uddered dam is off to a super start and traces back directly to the dam of Mc Cumber Foundation 701. Her only daughter in production is a 4x13, who is nursing an outstanding bull calf by Missing Link. Miss Wix 5017 has never missed AI and is backed by generations of females that have been

outstanding for fertility, productivity, and longevity. 8105 is an excellent Right Time son, backed by cows that have gotten it done for many generations.

Maternal great grand dam of Lot 44, Miss Wix 235 of Mc Cumber.



Lot 044 - Maternal Production Record

	BW	WW	YW	IMF	REA	Pathfinder
Miss Wix 5017	2/105	2/104	2/105	2/103	2/103	
Miss Wix 702	5/103	5/107	2/109	33/101	33/99	
Miss Wix 235	10/108	10/104	9/104			
Miss Wix 235 is the dam of Mc Cumber Foundation 701.						
Miss Wix 117	10/102	10/119	9/111			X



Mc Cumber 4X13 Extra 8176

Lot:

45 Mc Cumber 4X13 Extra 8176

Calved	Reg. #	Ind. Record	
2/23/2008	16102218	BW	94
		WW	720
		205	683
		WR	98
		ADG	3.05
		YW	1,110
		365	1,171
		YR	99
		IMF	4.9/132
		REA	12.7/109
		FAT	0.25/104

N Bar Emulation EXT	Emulation N Bar 5522
Sinclair Extra 4X13	N Bar Primrose 2424
N Bar Lady Ida S C C 2P37	N Bar Prime Time D806
	N Bar Lady Ida F1080
	Papa Equator 2928
Mc Cumber Powertrain HC 1025	Rosetta 048 of Mc Cumber
Gale 1124 of Mc Cumber	Mc Cumber 124 Traveler 212
Gale 662 of Mc Cumber	Gale 345 of Mc Cumber

EPDs										Dam's Prod.		
BW	WW	YW	Milk	SC	IMF	REA	Fat	\$W	\$B	BW	WW	YW
2.6	39	1+72	23	1+.02	1+.46	1+.05	1+.030	24.01	40.68	6/108	6/108	6/105

Selling 2/3 interest and full possession- 8176 could be the real sleeper of the sale. Phenotypically he is one of the top 4x13 sons in this sale. He is an attractive bull with additional muscle expression down his top which is carried out into a rump with extra width and dimension. He stands down on a well shape hoof with plenty of heel and exhibits the base width that his sire 4x13 possesses. Along with his appealing phenotype he scanned through the roof with an IMF of 4.9 to ratio 132, and had a REA of 12.7 to ratio 109. 8176 has a Marbling EPD of +.45 which ranks in the top 25% of the breed for non-parent bulls and has a positive REA EPD for a 4x13 son. His dam is an outstanding pathfinder daughter of Mc Cumber Powertrain 1025. She has a near perfect udder, and combines that with a tremendous amount of capacity. The maternal side of the pedigree is loaded with outstanding females that have excelled for fertility, and productivity. 7 of the 8 generations of females tracing back to the original Forever of Wye grand daughter we purchased from Candees in 1975 have achieved pathfinder status. Gale 1124 of Mc Cumber has produced 3 sons that have sold through previous sales to Bar V Ranch, Jim Mongeon in ND, and Four Aces Angus Ranch in MN. She has been an outstanding producer with a WWR 6/108, and YWR 6/105. Along with this she consistently adds marbling and REA to her progeny with IMF 6/122, and REA 6/105. Don't overlook this top son of 4x13. He not only has the bred in ability to sire outstanding females, but I would expect him to add tremendous carcass traits to all of his offspring.



Gale 1124 of Mc Cumber.
Dam of Lot 45.



Lot: Above: Maternal brother of Lot 46.

46 Mc Cumber 513 Traveler 8126

Calved	Reg. #	Ind. Record	
2/6/2008	16102175	BW	98
		WW	768
		205	698
		WR	100
		ADG	2.67
		YW	1,110
		365	1,125
		YR	95
		IMF	2.97/80
		REA	11.6/99
		FAT	0.3/125

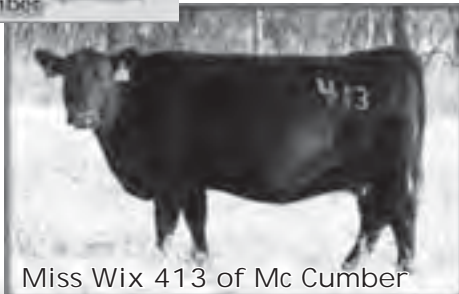
S A V 8180 Traveler 004	Sitz Traveler 8180
Mc Cumber 004 Traveler 513	Boyd Forever Lady 8003
Miss Wix 301 of Mc Cumber	Leachman Right Time
	Miss Wix 1119 of Mc Cumber
	Traveler 124 G D A R
Mc Cumber 124 Traveler 212	Miss Wix 365 of Mc Cumber
Miss Wix 3027 of Mc Cumber	Rito 054 G D A R
Miss Wix 5168 of Mc Cumber	Miss Wix 756 of Mc Cumber

EPDs										Dam's Prod.		
BW	WW	YW	Milk	SC	IMF	REA	Fat	\$W	\$B	BW	WW	YW
3.9	35	1+68	24	1+.57	1+.03	1+.10	1+.026	19.39	15.56	4/103	4/105	4/98

This moderate framed, thick made beef bull is wide based, thick topped and carries that thickness out into a thick meaty rump. He puts a foot down in all four corners, and resembles his sire in many ways. His pathfinder dam is a moderate framed, perfect uddered daughter of Mc Cumber 124 Traveler 212 that has never missed by AI and consistently brings in a top calf. She has produced two sons that have sold for an average of \$3600 to Mark Smith, and the Bar V Ranch in ND. The maternal side of his pedigree is stacked with outstanding sires which include 212, Rito 054, Shoshone Viking, and Forever 376.



Above: Maternal grand dam of Lot 46.
Right: Dam of Lot 47.



Miss Wix 413 of Mc Cumber



Lot:

47 Mc Cumber 2700 RT Time 828

Calved	Reg. #	Ind. Record	
1/22/2008	16103690	BW	92
		WW	826
		205	743
		WR	106
		ADG	3.22
		YW	1,238
		365	1,258
		YR	106
		IMF	3.85/103
		REA	12.8/109
		FAT	0.2/83

N Bar Emulation EXT	Emulation N Bar 5522
Leachman Right Time	N Bar Primrose 2424
Leachman Erica 0025	Tehama Bando 155
	Leachman Erica 8058
	Tehama Bando 155
Mc Cumber 155 Bando 214	Miss Wix 365 of Mc Cumber
Miss Wix 413 of Mc Cumber	Mc Cumber 124 Traveler 212
Miss Wix 2190 of Mc Cumber	Miss Wix 8009 Mc Cumber

EPDs										Dam's Prod.		
BW	WW	YW	Milk	SC	IMF	REA	Fat	\$W	\$B	BW	WW	YW
2	40	1+73	24	1+.11	1+.10	1-.06	1+.016	25.72	23.97	3/100	3/105	3/104

Selling 2/3 interest and full possession- A little bigger framed son of Right Time with a masculine herd bull look. 828 is a real eye catcher when you enter the pen. He is long bodied, super sound and combines this with added width and dimension to his top and rear quarter. He has been excellent at every measure along the way and weaned off his dam at 826 lbs. to earn a 205 day weight of 743 lbs. and ratio 106. Furthermore, he had a 365 day weight of 1258 lbs. to ratio 106 and scanned very well with an IMF of 3.85 to ratio 103, and had a REA of 12.8 to ratio 109. His dam is an outstanding daughter of Mc Cumber 155 Bando 214. She is moderate framed, extremely easy fleshing, and has near flawless udder. She has never missed to the AI sire and is off to an excellent start by achieving pathfinder status in her first year eligible. Miss Wix 413 has produced one son that sold to Ervin Helmuth in ND, and her only daughter was retained. She is a 3rd consecutive generation pathfinder and traces back to the dam of Mc Cumber Foundation 701.

828 has a pedigree abounding with pathfinder females. Along with this he performed well, and displays the phenotype that even the most discriminating would approve.

Lot 047 - Maternal Production Record						
	BW	WW	YW	IMF	REA	Pathfinder
Miss Wix 413	3/100	3/105	3/104	3/95	3/103	X
Miss Wix 2190	5/100	5/108	4/106	4/117	4/95	X
Miss Wix 8009	4/101	4/107	4/106	4/101	4/100	X
Miss Wix 235	10/108	10/104	9/104			
Miss Wix 235 is the dam of Mc Cumber Foundation 701.						
Miss Wix 117	10/102	10/119	9/111			X



Mc Cumber 535P Ext 8188

Lot: **48** Mc Cumber 535P Ext 8188

Calved	Reg. #	Ind. Record	
2/27/2008	16102229	BW	94
		WW	740
		205	729
		WR	104
		ADG	2.96
		YW	1,119
		365	1,203
		YR	101
		IMF	3.04/82
		REA	12/103
		FAT	0.29/121

N Bar Emulation EXT	Emulation N Bar 5522
Sitz JLS Emulation Ext 536P	N Bar Primrose 2424
Ideal 4465 of 6807 4286	D H D Traveler 6807
	E E 4286 of Ideal 2240 1254
Pine Creek Right Time 1147	Leachman Right Time
Gale 4108 of Mc Cumber	Sitz Everelda Entense 1137
Gale 2114 of Mc Cumber	Mc Cumber Foundation 701
	Gale 836 of Mc Cumber

EPDs										Dam's Prod.		
BW	WW	YW	Milk	SC	IMF	REA	Fat	\$W	\$B	BW	WW	YW
4.2	44	1+77	21		1+.10	1+.05	1+.048	21.93	23.77	3/100	3/97	2/99

This long bodied, smooth made son of 536P is big scrotaled, and excellent on his feet and legs. 8188 is a long striding, free moving bull that has a tremendous amount of eye appeal. He earned a 205 day weight of 729 lbs. to ratio 104, and recorded a 365 day weight of 1203 to ratio 101. His dam is an excellent uddered, deep bodied, thick made daughter of Pine Creek Right Time 1147. The 1147 daughters have been excellent cows and this one is no exception. We are really excited about the daughters of 536P, and reports back on the sons have been excellent. They are maintaining or gaining in condition while breeding cows and the dispositions are super.



Sire of Lot 48.



Mc Cumber 551 T Value 8150

Lot: **49** Mc Cumber 551 T Value 8150

Calved	Reg. #	Ind. Record	
2/12/2008	16102195	BW	72
		WW	752
		205	734
		WR	105
		ADG	2.84
		YW	1,115
		365	1,188
		YR	100
		IMF	2.85/77
		REA	11/94
		FAT	0.19/79

Mc Cumber 7111 Total Value	Vermilion Dateline 7078
Mc Cumber Total Value 551	Miss Wix 7111 of Mc Cumber
B Pride 9124 of Mc Cumber	Sitz Traveler 9929
	B Pride 839 of Mc Cumber
Boyd New Day 8005	A A R New Trend
Rosetta 562 of Mc Cumber	S V F Forever Lady 57D
Rosetta 961 of Mc Cumber	Mr Wix of Mc Cumber 204
	Rosetta 4117 of Mc Cumber

EPDs										Dam's Prod.		
BW	WW	YW	Milk	SC	IMF	REA	Fat	\$W	\$B	BW	WW	YW
1.8	42	1+71	24	1+.15	1+.01	1-.08	1+.009	28.24	17.54	1/86	2/104	2/100

Recommended for use on heifers- Moderate framed, deep ribbed and naturally thick best describes this calving ease son of Mc Cumber 209 T Value 551. This light birth weight bull weaned off at 752 lbs. and earned a 205 day weight of 734 lbs. to ratio 105. His dam is a long, smooth, feminine fronted daughter of Boyd New Day 8005 with an outstanding udder and a BWR 2/88, WWR 2/104, and YWR 2/100.



Grand dam of Lot 49.

McCumber
Angus
Karich



Watch for our
Fall Female Sale
This October

Featuring these top-producing cows.

The cowherd known for Outstanding Maternal Traits.



Mc Cumber Timberwolf 8154



Miss Wix 2022 of Mc Cumber

The outstanding donor dam of this flush is Miss Wix 2022 of Mc Cumber. She is a powerful beef cow with tremendous fleshing ease, an abundance of volume, and excellent feet and legs. Her udder is what all other cows on this ranch are compared to. It is near perfect with small well placed teats, exceptional fore, and rear udder attachment, and is free of hair, and false teats. Her production has been outstanding. She has produced 5 sons that have sold for an average of \$6000, and her only mature daughter in production has been superb. She is Miss Wix 409 who produced last year's high selling bull, and is the dam of the herd bull prospect selling as Lot 6 this year. 409 earned pathfinder this year, and is a testament of how this cow family consistently passes on outstanding fertility and top-notch production from generation to generation. Miss Wix 2022 is often a favorite of visitors to the ranch, and is very impressive from every angle. Her only 2 full sisters have topped our last two cow sales at \$15,000, and \$12,000 respectively to Fortune's Rafter U Cross Ranch in SD, and to TL Ranch in MO. The progeny produced by this line of cows have been adaptable to many environments and not only have included many of our top sellers, but the females have had the ability to pass on fertility, productivity, and longevity for many generations.

Lot: **50** Mc Cumber Timberwolf 8154

Calved 2/14/2008
Reg. # 16102199

Wulffs Ext 6106
LT Timberwolf 5014
L T Ethelda 3245

N Bar Emulation EXT
Wulffs Erica Dianna C116
Sitz Value 7097
L T Ethelda 9012
N Bar Emulation EXT
Leachman Erica 0025
G D A R Traveler 71
Miss Wix 365 of Mc Cumber

Leachman Right Time
Miss Wix 2022 HC Mc Cumber
Miss Wix 7111 of Mc Cumber

Ind. Record	
BW	88
WW	774
205	716
WR	100
ADG	3.88
YW	1,270
365	1,337
YR	100
IMF	3.94/109
REA	11.4/102
FAT	0.19/83

EPDs										Dam's Prod.		
BW	WW	YW	Milk	SC	IMF	REA	Fat	\$W	\$B	BW	WW	YW
I+1.4	I+45	I+79	I+25	I+.39	I+.13	I-.06	I-.005	28.64	38.65	4/95	4/105	4/104

Selling ½ interest and full possession-Recommended for use on heifers-8154 is the bigger framed member of this flush, but has an abundance of depth and spring to his rib. He is thick topped, and when you get behind him he stands wide and square. He weaned off his recipient dam at 774 lbs. and was the 2nd high gaining bull on test at 3.88 lbs/day on only a 42 Mega Cal ration. He earned a 365 day weight of 1337 lbs. and had an IMF ratio of 109, and REA ratio of 102. His added performance, outstanding dam, and appealing phenotype make 8154 one of the top herd bull prospects to sell in this sale.



Mc Cumber Timberwolf 8153

Lot: **51** Mc Cumber Timberwolf 8153

Calved 2/13/2008 Reg. # 16102198

Wulffs Ext 6106
LT Timberwolf 5014
L T Ethelda 3245

Leachman Right Time
Miss Wix 2022 HC Mc Cumber
Miss Wix 7111 of Mc Cumber

N Bar Emulation EXT
Wulffs Erica Dianna C116
Sitz Value 7097
L T Ethelda 9012
N Bar Emulation EXT
Leachman Erica 0025
G D A R Traveler 71
Miss Wix 365 of Mc Cumber

Ind. Record	
BW	71
WW	650
205	600
WR	100
ADG	3.2
YW	1,060
365	1,112
YR	100
IMF	4.46/123
REA	10.8/96
FAT	0.25/109

EPDs										Dam's Prod.		
BW	WW	YW	Milk	SC	IMF	REA	Fat	\$W	\$B	BW	WW	YW
I+1.4	I+45	I+79	I+25	I+.39	I+.19	I-.10	I-.001	28.91	28.54	4/95	4/105	4/104

Selling ½ interest and full possession- Recommended for use on heifers- Moderate framed, thick made tank best describes 8153. Although his performance has been set back by a poor recipe, 8153 is my personal favorite member of the flush. He is wide based, free moving, and excellent on his feet and legs. His abundance of rib and additional thickness lead me to believe that he will thrive under an array of environmental conditions. He started at only 71lbs. to help ensure his calving ease, and scanned 4.46 for IMF with a ratio of 123. This legitimate calving ease herd bull prospect is backed by generations of outstanding females that have been fertile, productive females whether they have been on this ranch or working for other breeders across the country.

Clockwise from right: Maternal brother; Maternal sister to dam; Grand dam; Great grand dam and Maternal sister to Lots 50 and 51.



Miss Wix 409 of Mc Cumber



Miss Wix 2021 of Mc Cumber



Miss Wix 365 of Mc Cumber



Miss Wix 7111 of Mc Cumber

Lots 050 & 051 - Maternal Production Record

	BW	WW	YW	IMF	REA	Pathfinder
Miss Wix 2022	4/95	4/105	4/104	12/112	12/97	X
Miss Wix 7111	4/98	4/105	4/105	18/102	18/103	
Miss Wix 365	10/102	10/106	7/108	12/102	12/103	X
Miss Wix 294	12/107	12/113	12/109			X
Miss Wix 682	10/105	10/112	10/111			X



Mc Cumber Timberwolf 864

Lot: **52** Mc Cumber Timberwolf 864

Calved	Reg. #	Ind. Record	
1/27/2008	16102307	BW	95
		WW	838
		205	743
		WR	106
		ADG	3.89
		YW	1,336
		365	1,365
		YR	115
		IMF	3.98/107
		REA	12.9/110
		FAT	0.18/75

Wulffs Ext 6106	N Bar Emulation EXT
LT Timberwolf 5014	Wulffs Erica Dianna C116
L T Ethelda 3245	Sitz Value 7097
	L T Ethelda 9012
	Leachman Right Time
BT Right Time 24J	Sitz Everelda Entense 1905
Miss Wix 364 of Mc Cumber	Hilltop Rito H218
Miss Wix 9131 of Mc Cumber	Miss Wix 5168 of Mc Cumber

EPDs										Dam's Prod.		
BW	WW	YW	Milk	SC	IMF	REA	Fat	\$W	\$B	BW	WW	YW
2.7	49	1+93	20	1+.14	1+.08	1+.06	1-.008	23.32	39.3	4/103	4/105	4/107

This big, stout, high performing son of Timberwolf should add length, and pounds to a set of calves. 864 weaned off his outstanding dam at 838 lbs. and earned a 205 day weight of 743 lbs. to ratio 106. He is the top gaining bull on test will an ADG of 3.89 for a ratio of 127, and recorded a 365 day weight of 1365 lbs. to ratio 115. He scanned an IMF of 3.98 to ratio 107 and had a REA of 12.9 to ratio 110. His dam is a very impressive cow with a ton of rib, and capacity. She is thick from front to rear and has an impeccable udder. Along with this she has been very productive with a WWR of 4/105, YWR 4/107, REA of 4/104.



Mc Cumber 536 Ext 8139

Lot: **53** Mc Cumber 2700 RT Time 8115

Calved	Reg. #	Ind. Record	
2/4/2008	16103680	BW	92
		WW	718
		205	649
		WR	93
		ADG	3.2
		YW	1,128
		365	1,161
		YR	98
		IMF	3.04/82
		REA	10.6/91
		FAT	0.24/100

N Bar Emulation EXT	Emulation N Bar 5522
Leachman Right Time	N Bar Primrose 2424
Leachman Erica 0025	Tehama Bando 155
	Leachman Erica 8058
Mc Cumber Foundation 701	Mc Cumber 124 Traveler 212
Rosetta 162 of Mc Cumber	Miss Wix 235 of Mc Cumber
Rosetta 601 of Mc Cumber	G D A R Gold Nugget 766
	Rosetta 421 of Mc Cumber

EPDs										Dam's Prod.		
BW	WW	YW	Milk	SC	IMF	REA	Fat	\$W	\$B	BW	WW	YW
2.3	33	1+67	21	1+.44	1-.03	1-.23	1+.027	21.26	7.68	4/101	4/100	4/103

Selling 2/3 interest and full possession- 8115 is the natural calf off of Rosetta 162 of Mc Cumber. 162 is the dam to the herd bull prospect selling as Lot 4 in this sale. 8115 is deep bodied, long and very good on his feet and legs. His dam has already produced one herd bull that sold for \$7500 dollars as a feature of our 2005 bull sale. Along with this the line of cows from which he descends has been excellent.

This genuine cow maker should sire females that would positively influence even the best cowherds.

Lot 053 - Maternal Production Record			
	BW	WW	YW
Rosetta 162	4/101	4/100	4/103
Rosetta 601	9/101	9/109	8/104
Rosetta 421	3/97	3/106	3/109
Rosetta 405	8/95	8/105	7/101

Lot: **54** Mc Cumber 536P Ext 8139

Calved	Reg. #	Ind. Record	
2/9/2008	16102185	BW	88
		WW	700
		205	640
		WR	91
		ADG	3.45
		YW	1,141
		365	1,192
		YR	100
		IMF	3.41/92
		REA	11.4/97
		FAT	0.36/150

N Bar Emulation EXT	Emulation N Bar 5522
Sitz JLS Emulation Ext 536P	N Bar Primrose 2424
Ideal 4465 of 6807 4286	D H D Traveler 6807
	E E 4286 of Ideal 2240 1254
Mc Cumber Foundation 701	Mc Cumber 124 Traveler 212
Miss Wix 3013 of Mc Cumber	Miss Wix 235 of Mc Cumber
Miss Wix 575 of Mc Cumber	HBR Rito Bravo 1441
	Miss Wix 04 of Mc Cumber

EPDs										Dam's Prod.		
BW	WW	YW	Milk	SC	IMF	REA	Fat	\$W	\$B	BW	WW	YW
3	30	1+62	19	1-.25	1+.09	1+.02	1+.037	18.53	15.78	3/96	3/94	3/98

Selling 2/3 interest and full possession- This moderate framed, tremendously thick heavy muscled beef bull is the type of bull that epitomizes low input, forage efficient genetics. 8139 is thick from front to rear, stout made, deep bodied, and extremely sound and free moving on his feet and legs. His dam is a high volume, thick daughter of Mc Cumber Foundation 701, that is easy fleshing, and has an excellent udder. She is a moderate milking cow, but still weaned off 8139 at 700 lbs. His pedigree traces to some of the most proven bulls of the breed known for producing cattle that work in any environment. These bulls include, Mc Cumber Foundation 701, Shoshone Viking GD 60 two times, CSU Rito 4114 multiple times, EXT, 6807, and Candolier Forever 376 multiple times. 8139 is a personal favorite of mine. He is designed to work in any environment and I would expect him to sire females with depth of rib, tremendous thickness, and fleshing ease second to none. If you are serious about creating cattle that require less feed, and have the ability to get it done on grass, 8139 should be towards the top of the list.



Mc Cumber Timberwolf 8113

Lot: **55** Mc Cumber Timberwolf 8113

Calved	Reg. #	Ind. Record	
2/4/2008	16102166	BW	72
		WW	660
		205	674
		WR	96
		ADG	3.13
		YW	1,060
		365	1,175
		YR	99
		IMF	5.05/136
		REA	11.2/96
		FAT	0.22/92

Wulffs Ext 6106	N Bar Emulation EXT
LT Timberwolf 5014	Wulffs Erica Dianna C116
L T Ethelda 3245	Sitz Value 7097
	L T Ethelda 9012
	N Bar Emulation EXT
	N Bar Lady Ida S C C 2P37
	G D A R Traveler 71
	Miss Wix 365 of Mc Cumber

EPDs											Dam's Prod.		
BW	WW	YW	Milk	SC	IMF	REA	Fat	\$W	\$B	BW	WW	YW	
-0.4	41	1+72	23		1+.17	1-.01	1-.007	29.68	28.39	1/86	1/96	1/99	

Selling 2/3 interest and full possession- Recommended for use on heifers- 8113 should be a sure bet calving ease bull by LT Timberwolf, and out of an outstanding daughter of Sinclair Extra 4x13. 8113 is a thick made, deep bodied bull. He is smooth fronted, extra sound, and has a thick, meaty rump. He started at only 72 lbs. and earned one the top IMF scores of the group at 5.05 to ratio 136. His dam is a beautiful daughter of 4x13 that is moderate framed, deep bodied, and has a near perfect udder. She rebred quickly and is currently nursing a herd bull prospect by OCC Missing Link. She is a maternal sister to Miss Wix 2022 of Mc Cumber who is the outstanding donor dam of many outstanding progeny that have sold through previous sales, and her dam Miss Wix 7111 is the female that has carried on for Miss Wix 365 of Mc Cumber. The full brother to Miss Wix 6145 is being retained here for use on heifers. 8113 is backed by a cow family that is second to none, and combines this with calving ease, Marbling, and an appealing phenotype.



Miss Wix 7111 of Mc Cumber



Miss Wix 365 of Mc Cumber

Above: Grand dam of Lot 55/ Right: Great grand dam of Lot 55.



Mc Cumber Timberwolf 8045

Lot: **56** Mc Cumber Timberwolf 8045

Calved	Reg. #	Ind. Record	
2/4/2008	16102166	BW	92
		WW	620
		205	693
		WR	111
		ADG	3.46
		YW	1,144
		365	1,240
		YR	114
		IMF	5.05/136
		REA	11.2/96
		FAT	0.22/92

Wulffs Ext 6106	N Bar Emulation EXT
LT Timberwolf 5014	Wulffs Erica Dianna C116
L T Ethelda 3245	Sitz Value 7097
	L T Ethelda 9012
	Leachman Right Time
	S Elcona 076
	Mc Cumber Dakota 9023
	Blackcap 9128 of Mc Cumber

EPDs											Dam's Prod.		
BW	WW	YW	Milk	SC	IMF	REA	Fat	\$W	\$B	BW	WW	YW	
1+2.6	1+46	1+87	1+19	1+.29	1-.11	1+.04	1-.002	23.18	28.76	2/100	2/103	2/105	

This March born son of Timberwolf is sure to catch your eye. 8045 is an extremely free moving bull with an abundance of rib and thickness. He is big topped, wide based, and has a rear quarter with extra width and dimension. He earned a 365 day weight of 1240 lbs. to ratio 109, and had a REA of 12.8 to ratio 114. His dam is a very impressive daughter of S Right Time 205 with an excellent udder, loads of rib, and extra thickness. Although 8045 is a little younger he doesn't give up anything to his contemporaries.

Lot: **57** Mc Cumber Timberwolf 8164

Calved	Reg. #	Ind. Record	
2/19/2008	16102206	BW	97
		WW	772
		205	724
		WR	100
		ADG	3.28
		YW	1,192
		365	1,249
		YR	100
		IMF	3.98/110
		REA	11.6/104
		FAT	0.2/87

Wulffs Ext 6106	N Bar Emulation EXT
LT Timberwolf 5014	Wulffs Erica Dianna C116
L T Ethelda 3245	Sitz Value 7097
	L T Ethelda 9012
	N Bar Emulation EXT
	Leachman Right Time
	Leachman Erica 0025
	G D A R Traveler 71
	Miss Wix 365 of Mc Cumber

EPDs											Dam's Prod.		
BW	WW	YW	Milk	SC	IMF	REA	Fat	\$W	\$B	BW	WW	YW	
1+1.4	1+45	1+79	1+25	1+.39	1+.14	1-.04	1-.004	28.82	36.54	4/95	4/105	4/104	

Selling 2/3 interest and full possession- 8164 is the flush brother to Lot 50, and 51. He weaned off his recipient dam at 772 lbs. and earned a 365 day weight of 1250 lbs. He scanned superbly with an IMF of 3.98 to ratio 110, and had a REA of 11.6 to ratio 104. 8164 is extremely long bodied and thick topped. His outstanding dam continues to excel and is a favorite of those who see her. The production and fertility behind his cow family is well documented, and they continue to rise to the top, generation after generation.

Lot: **58** Mc Cumber 4X13 Extra 8030

Calved 1/16/2008 Reg. # 16266336

N Bar Emulation EXT
Sinclair Extra 4X13
N Bar Lady Ida S C C 2P37

Mc Cumber 7078 VRD 3108
Blackcap 6172 of Mc Cumber
Blackcap 772 of Mc Cumber

Emulation N Bar 5522
N Bar Primrose 2424
N Bar Prime Time D806
N Bar Lady Ida F1080
Vermilion Dateline 7078
Lassie 974 of Mc Cumber
Mc Cumber 124 Traveler 212
Blackcap 024 of Mc Cumber

Ind. Record	
BW	75
WW	650
205	674
WR	108
ADG	2.95
YW	1,102
365	1,146
YR	105
IMF	4.93/135
REA	10.5/94
FAT	0.28/127

EPDs										Dam's Prod.		
BW	WW	YW	Milk	SC	IMF	REA	Fat	\$W	\$B	BW	WW	YW
I+1.2	I+38	I+70	I+20		I+.45	I-.18	I+.035	25.96	31.67	1/93	1/101	1/101

Recommended for use on heifers- 8030 is an extremely long bodied, smooth shouldered son of 4x13 with an attractive profile, and plenty of thickness when you get behind him. He started with only a 75 lb. birth weight and weaned off at 650 lbs. on September 7th as his dam's first calf. 4x13 has worked very well on our VRD bred cattle and this bull is no exception.

Lot: **59** Mc Cumber 6PV20 Value 834

Calved 1/22/2008 Reg. # 16102281

Sinclair Net Present Value
Sinclair True Value 6PV20
N Bar Miss Emulous A404

Sitz Triangle S Valubull
Miss Wix 610 of Mc Cumber
Miss Wix 4008 of Mc Cumber

N Bar Prime Time D806
Ideal 4465 of 6807 4286
N Bar Emulation Ext Z52
N Bar Miss Emulous X3091
Sitz Value 7097
Sitz Barbaramere Nell 1590
Boyd New Day 8005
Miss Wix 5007 of Mc Cumber

Ind. Record	
BW	61
WW	670
205	665
WR	95
ADG	3.13
YW	1,070
365	1,166
YR	98
IMF	4.85/130
REA	11.8/101
FAT	0.29/121

EPDs										Dam's Prod.		
BW	WW	YW	Milk	SC	IMF	REA	Fat	\$W	\$B	BW	WW	YW
-3.7	35	I+68	24		I+.43	I+.10	I+.041	28.82	28.65	1/74	1/95	1/98

Selling 2/3 interest and full possession- Recommended for use on heifers- Extreme calving ease, moderate framed and stylish best describe 834. Along with this he puts a foot down in all four corners, and carries added thickness down his top and out into an expressive rear quarter. He started with only a 61 lb. birth weight, but still managed to earn a 205 day weight over 650 lbs. Additionally, he earned an IMF of 4.85 to ratio 130 and had a REA of 11.8 to ratio 101. His extreme calving ease is confirmed by EPDs with a calving ease direct of +15 and a BW EPD of -3.7 which both rank in the best 1% of non-parent bulls in the breed for calving ease and birth weight. To go along with this he has near average WW and YW EPDS, and is more than adequate on both marbling and REA. His dam is a moderate framed, easy fleshing, naturally thick daughter of Sitz Triangle S Valubull, and a member of the Miss Wix cow family. Breed leading calving ease, excellent new born calf vigor combined with adequate performance, and excellent carcass quality make 834 a bull to check out.



Mc Cumber 536P Ext 8148



Dam of Lot 60.
Left: Full brother to dam.



Mc Cumber 2700 RT Time 5148

Lot: **60** Mc Cumber 536P Ext 8148

Calved 2/12/2008 Reg. # 16102192

N Bar Emulation EXT
Sitz JLS Emulation Ext 536P
Ideal 4465 of 6807 4286

Leachman Right Time
Miss Wix 5005 of Mc Cumber
Miss Wix 7007 of Mc Cumber

Emulation N Bar 5522
N Bar Primrose 2424
D H D Traveler 6807
E E 4286 of Ideal 2240 1254
N Bar Emulation EXT
Leachman Erica 0025
Mc Cumber 124 Traveler 212
Miss Wix 030 of Mc Cumber

Ind. Record	
BW	
WW	678
205	667
WR	95
ADG	3.38
YW	1,110
365	1,208
YR	101
IMF	3.28/88
REA	12.3/105
FAT	0.22/92

EPDs										Dam's Prod.		
BW	WW	YW	Milk	SC	IMF	REA	Fat	\$W	\$B	BW	WW	YW
2.8	35	I+68	22		I+.06	I+.09	I+.029	21.73	20.54	1/87	2/89	1/101

Selling 2/3 interest and full possession- A favorite of mine with the bred in ability to sire conversion oriented, problem free cattle that flesh easily on roughage. 8148 is long bodied, deep ribbed, and heavy muscled. He moves with ease and stands down square on his feet and legs. 8148 had a gain ratio of 110 and earned a 365 day weight of 1208 lbs. to ratio 101. In addition to this he scanned a REA of 12.3 to ratio 105. His dam is an extremely easy fleshing, excellent uddered daughter of Right Time that is moderate framed, and a member of the Miss Wix cow family. Full brothers to his dam have sold to Steve Whipple and Rick Mc Conville in NE and one of her flush sisters sold to 12 Star Angus Ranch in LA for \$6250 through our 2006 female sale.



Lassie 180 of Mc Cumber

Dam of Lot 63.

Lot: **61** Mc Cumber Timberwolf 804

Calved	Reg. #	Ind. Record	
1/16/2008	16102151	BW	78
		WW	724
		205	707
		WR	101
		ADG	2.95
		YW	1,102
		365	1,179
		YR	99
		IMF	4.2/113
		REA	10.7/91
		FAT	0.14/58

Wulffs Ext 6106	N Bar Emulation EXT
LT Timberwolf 5014	Wulffs Erica Dianna C116
L T Ethelda 3245	Sitz Value 7097
	L T Ethelda 9012
Mc Cumber 7111 Total Value	Vermilion Dateline 7078
Blackcap 664 of Mc Cumber	Miss Wix 7111 of Mc Cumber
Blackcap 311 of Mc Cumber	BT New Trend 172K
	Blackcap 9125 of Mc Cumber

EPDs										Dam's Prod.		
BW	WW	YW	Milk	SC	IMF	REA	Fat	\$W	\$B	BW	WW	YW
1.5	45	1+77	22		1+.15	1-.07	1-.016	28.78	25.06	1/93	1/101	1/99

Recommended for use on heifers- This long, smooth fronted son of Timberwolf weaned off his dam at 724 lbs. and earned a 205 day weight of 707 lbs. to ratio 101, while only starting life with a 78 lb. birth weight. Additionally, he had an IMF of 4.2 to ratio 113 with only .14 in. of back fat. His dam is a deep ribbed, wide made cow with a good udder and has settled AI on her first two calves.

Lot: **62** Mc Cumber 513 Traveler 8031

Calved	Reg. #	Ind. Record	
1/24/2008	16266337	BW	70
		WW	682
		205	716
		WR	115
		ADG	3.18
		YW	1,168
		365	1,225
		YR	112
		IMF	4.16/113
		REA	10.5/94
		FAT	0.18/82

S A V 8180 Traveler 004	Sitz Traveler 8180
Mc Cumber 004 Traveler 513	Boyd Forever Lady 8003
Miss Wix 301 of Mc Cumber	Leachman Right Time
	Miss Wix 1119 of Mc Cumber
Mc Cumber 7078 VRD 3108	Vermilion Dateline 7078
Rosetta 6207 of Mc Cumber	Lassie 974 of Mc Cumber
Rosetta 949 of Mc Cumber	Mr Wix of Mc Cumber 204
	Rosetta 297 of Mc Cumber

EPDs										Dam's Prod.		
BW	WW	YW	Milk	SC	IMF	REA	Fat	\$W	\$B	BW	WW	YW
1+1.0	1+40	1+79	1+20		1+.17	1+.02	1+.016	24.55	33.74	1/87	1/107	1/108

Recommended for use on heifers- 8031 is a real chunk by Mc Cumber 004 Traveler 513. He is deep bodied, thick and has a large, expressive rear quarter. He weaned off his dam in early September at 682 lbs. and earned a 205 day weight of 716 lbs. while only starting out at 70 lbs. He also recorded a 365 day weight of 1225 lbs. to ratio 108, and had an IMF of 4.16 to ratio 113. His dam descends from the same cows that produced the Lot 4 bull in this sale, and have been top producing, easy fleshing, excellent uddered females for many generations.

Lot: **63** Mc Cumber 2700 RT Time 8129

Calved	Reg. #	Ind. Record	
2/7/2008	16103682	BW	106
		WW	838
		205	763
		WR	109
		ADG	3.13
		YW	1,238
		365	1,264
		YR	106
		IMF	2.25/60
		REA	11.9/102
		FAT	0.22/92

N Bar Emulation EXT	Emulation N Bar 5522
Leachman Right Time	N Bar Primrose 2424
Leachman Erica 0025	Tehama Bando 155
	Leachman Erica 8058
Mc Cumber Foundation 701	Mc Cumber 124 Traveler 212
Lassie 180 of Mc Cumber	Miss Wix 235 of Mc Cumber
Lassie 657 of Mc Cumber	V D A R New Trend 47
	Lassie 444 of Mc Cumber

EPDs										Dam's Prod.		
BW	WW	YW	Milk	SC	IMF	REA	Fat	\$W	\$B	BW	WW	YW
4.6	40	1+73	21	1+.46	1-.12	1-.18	1+.025	19.23	13.23	6/113	6/101	6/100

8129 is a big, stout son of Right Time with excellent performance across the board. He has a bigger birth weight but use him on mature cows and you won't have a problem. This long bodied, deep ribbed bull weaned off at 838 lbs. without creep and earned a 205 day weight of 763 lbs. to ratio 109. He gained above average and recorded a 365 day weight of 1264 lbs. to ratio 106. His outstanding dam is one of my favorite Mc Cumber Foundation 701 daughters and has WWR 6/101, and YWR 6/100. She gets the job done year in and year out. Lassie 180 is easy fleshing, deep bodied, thick made, and has an outstanding udder. She is a legitimate beef cow that is problem free, low maintenance, and the kind we like to have around here.

Lot: **64** Mc Cumber 4X13 Extra 8172

Calved	Reg. #	Ind. Record	
2/22/2008	16102214	BW	89
		WW	764
		205	723
		WR	103
		ADG	2.66
		YW	1,105
		365	1,149
		YR	96
		IMF	2.67/72
		REA	11.9/102
		FAT	0.27/113

N Bar Emulation EXT	Emulation N Bar 5522
Sinclair Extra 4X13	N Bar Primrose 2424
N Bar Lady Ida S C C 2P37	N Bar Prime Time D806
	N Bar Lady Ida F1080
Mc Cumber Foundation 701	Mc Cumber 124 Traveler 212
Miss Wix 2129 of Mc Cumber	Miss Wix 235 of Mc Cumber
Miss Wix 765 of Mc Cumber	V D A R Rito 953
	Miss Wix 063 of Mc Cumber

EPDs										Dam's Prod.		
BW	WW	YW	Milk	SC	IMF	REA	Fat	\$W	\$B	BW	WW	YW
0.9	36	1+60	22	1-.02	1+.22	1-.15	1+.035	28.23	19.99	5/105	5/98	5/93

Recommended for use on heifers- I would expect 8172 to be not only a calving ease bull, but a legitimate cow maker as well without sacrificing early growth, and muscle. 8172 earned a 205 day weight of 723 lbs. to ratio 103, and scanned a REA of 11.9 to ratio 102. His dam is another beautiful Foundation daughter with a flawless udder. She has plenty of thickness and rib, and has excellent foot structure with a large well shaped hoof and plenty of depth to her heel. This high libido son of 4x13 should sire forage efficient, problem free females that are long lived, and fertile without additional inputs.



Mc Cumber 536P Ext 8219

Lot: **65** Mc Cumber 536P Ext 8219

Calved 3/18/2008 Reg. # 16102261

N Bar Emulation EXT
Sitz JLS Emulation Ext 536P
Ideal 4465 of 6807 4286

Mc Cumber Foundation 701
Miss Wix 3014 of Mc Cumber
Miss Wix 554 of Mc Cumber

Emulation N Bar 5522
N Bar Primrose 2424
D H D Traveler 6807
E E 4286 of Ideal 2240 1254
Mc Cumber 124 Traveler 212
Miss Wix 235 of Mc Cumber
Mc Cumber Stretch 604
Miss Wix 063 of Mc Cumber

Ind. Record	
BW	93
WW	660
205	677
WR	97
ADG	2.93
YW	1,035
365	1,146
YR	96
IMF	3.88/104
REA	11.7/100
FAT	0.32/133

EPDs											Dam's Prod.		
BW	WW	YW	Milk	SC	IMF	REA	Fat	\$W	\$B		BW	WW	YW
3.7	32	1+60	24		1+.15	1+.02	1+.033	20.16	21.79		4/102	4/106	4/105

Selling 2/3 interest and full possession- This mid-March born son of 536P has a masculine beef bull look with an abundance of rib, natural thickness, and extra width and dimension to his rear quarter. Like his 3/4 brother Lot 54, 8219 should sire low input, forage efficient cattle that will succeed in any environment. 536P has a tremendous amount of libido, and he seems to pass this on to his son's as well. 8219 is no exception. We use 536P clean up on 180 cows after one AI cycle and he does an outstanding job of covering anything that repeats. The dam of 8219 is a high volume, thick made female that has earned pathfinder status and brings in a good one every year.

8219 is the second youngest bull in the sale. However, he ranks towards the top for producing low maintenance, problem free, fertile cattle that will be successful under any management scenario.

Lot 065 - Maternal Production Record						
	BW	WW	YW	IMF	REA	Pathfinder
Miss Wix 3014	4/102	4/106	4/106	4/102	4/104	X
Miss Wix 554	7/97	7/103	7/104	7/91	7/103	X
Miss Wix 063	7/99	7/106	4/107	4/94	4/100	

Lot: **66** Mc Cumber 383 Tradition 8128

Calved 2/7/2008 Reg. # 16102177

Leachman Right Time
Mc Cumber Tradition 383
Lassie 7015 of Mc Cumber

Mc Cumber Mr Wix 7104
Lassie 233 of Mc Cumber
Lassie 059 of Mc Cumber

N Bar Emulation EXT
Leachman Erica 0025
Mc Cumber 124 Traveler 212
Lassie 648 of Mc Cumber
Mr Wix of Mc Cumber 204
B Pride 488 of Mc Cumber
Mc Cumber Foundation 701
Lassie 267 of Mc Cumber

Ind. Record	
BW	91
WW	748
205	681
WR	97
ADG	3.0
YW	1,132
365	1,161
YR	97
IMF	2.86/77
REA	10.4/89
FAT	0.21/88

EPDs											Dam's Prod.		
BW	WW	YW	Milk	SC	IMF	REA	Fat	\$W	\$B		BW	WW	YW
3.7	29	1+61	24		1+.61	1+.07	1-.28	1+.017	17.62	11.34	5/104	5/107	5/103

Long, smooth, and free moving best describe this son of Mc Cumber Tradition 383. His pathfinder dam is a moderate framed, easy fleshing, good footed daughter of Mc Cumber Mr. Wix 7104. She has been very productive with a WWR 5/107, and YWR 5/103.



Mc Cumber 383 Tradition 815

Lot: **67** Mc Cumber 383 Tradition 815

Calved 1/20/2008 Reg. # 16102194

Leachman Right Time
Mc Cumber Tradition 383
Lassie 7015 of Mc Cumber

Mc Cumber 7111 Total Value
Lassie 534 of Mc Cumber
Lassie 233 of Mc Cumber

N Bar Emulation EXT
Leachman Erica 0025
Mc Cumber 124 Traveler 212
Lassie 648 of Mc Cumber
Vermilion Dateline 7078
Miss Wix 7111 of Mc Cumber
Mc Cumber Mr Wix 7104
Lassie 059 of Mc Cumber

Ind. Record	
BW	95
WW	786
205	730
WR	104
ADG	3.31
YW	1,210
365	1,260
YR	106
IMF	3.42/92
REA	12/103
FAT	0.27/113

EPDs											Dam's Prod.		
BW	WW	YW	Milk	SC	IMF	REA	Fat	\$W	\$B		BW	WW	YW
4.6	37	1+73	24		1+.12	1-.07	1+.023	17.89	20.94		1/107	1/104	1/106

815 is a heavy muscled, stout made son of Tradition with extra shape and expression to his rear quarter. He earned a 205 day weight of 730 lbs. to ratio 104. He performed outstanding on the high roughage ration with a gain ratio of 108, and recorded a 365 day weight of 1260 lbs. to ratio 106. His dam is a capacious daughter of Mc Cumber Total Value 209 and maintains her flesh with ease. Her pathfinder dam consistently does a good job and has never missed AI on 6 calves. The Tradition son's have been a popular sire group among our customer's and 815 is one of the best in this sale.



Maternal brother to dam of Lot 68.

Lot: **68** Mc Cumber 536P Ext 8123

Calved 2/6/2008 Reg. # 16102172

N Bar Emulation EXT
Sitz JLS Emulation Ext 536P
Ideal 4465 of 6807 4286

Vermilion Dateline 7078
Rosetta 5123 of Mc Cumber
Rosetta 1126 of Mc Cumber

Emulation N Bar 5522
N Bar Primrose 2424
D H D Traveler 6807
E E 4286 of Ideal 2240 1254
Connealy Dateline
Vermilion Blackbird 5044
Mc Cumber Foundation 701
Rosetta 5002 of Mc Cumber

Ind. Record	
BW	92
WW	708
205	685
WR	98
ADG	3.02
YW	1,095
365	1,168
YR	98
IMF	3.32/89
REA	10.7/91
FAT	0.2/83

EPDs										Dam's Prod.		
BW	WW	YW	Milk	SC	IMF	REA	Fat	\$W	\$B	BW	WW	YW
4.3	40	1+75	22		1+.08	1+.02	1+.018	19.84	21.22	2/102	2/102	2/102

This stout made, naturally thick bull stands down on a big foot and puts them down in all four corners. 8123 is a large scrotum bull with plenty of rib, and additional length of body. His dam is a moderate framed, easy fleshing daughter of VRD, and his grand dam epitomizes what an Angus cow should be. The cows behind have done a super job for many generations, and I would expect 8123 to sire moderate, deep ribbed, excellent uddered females, and males that are thick, deep, and sound.

Lot 068 - Maternal Production Record

	BW	WW	YW	IMF	REA
Rosetta 5123	2/102	2/102	2/102	2/100	2/100
Rosetta 1126	6/105	6/103	6/107	6/97	6/105
Rosetta 5002	9/98	9/98	8/102	14/96	14/101



Lot: **69** Mc Cumber 4X13 Extra 842

Calved 1/24/2008 Reg. # 16102288

N Bar Emulation EXT
Sinclair Extra 4X13
N Bar Lady Ida S C C 2P37

BT New Trend 172K
Rosetta 294 of Mc Cumber
Rosetta 849 of Mc Cumber

Emulation N Bar 5522
N Bar Primrose 2424
N Bar Prime Time D806
N Bar Lady Ida F1080
A A R New Trend
BT Everelda Entense 57D
G D A R Band 477
Rosetta 541 of Mc Cumber

Ind. Record	
BW	89
WW	808
205	712
WR	102
ADG	2.63
YW	1,145
365	1,133
YR	95
IMF	3.83/103
REA	12.7/109
FAT	0.24/100

EPDs										Dam's Prod.		
BW	WW	YW	Milk	SC	IMF	REA	Fat	\$W	\$B	BW	WW	YW
1.7	38	1+64	26	1+.22	1+.28	1+.08	1+.019	28.14	31.61	5/98	5/104	5/100

Recommended for use on heifers- 842 is a little bit bigger framed son of 4x13, but weaned off his pathfinder dam at 808 lbs. and earned a WWR of 102. He scanned exceptionally well with an IMF of 3.83 to ratio 103, and had a REA of 12.7 to ratio 109. Along with this he had a REA/CWT of 1.16 and is large scrotumed, big topped, smooth shouldered bull. His pathfinder dam has never missed AI, and consistently adds REA to her progeny with a REA of 5/111. For those who like a little more frame, this 4x13 son may fit the bill.



Lot: Grand sire of Lot 70.

70 Mc Cumber 6120 Traveler 819

Calved 1/21/2008 Reg. # 16102231

S A V 8180 Traveler 004
Mc Cumber 004 Traveler 6120
Erianna 2206 of Mc Cumber

Mr Wix of Mc Cumber 204
Blackcap 088 of Mc Cumber
Blackcap 5126 of Mc Cumber

Sitz Traveler 8180
Boyd Forever Lady 8003
Mc Cumber 6122 Equator 8113
Erianna 880 of Mc Cumber
Tehama Bando 155
Miss Wix 204 of Mc Cumber
Mc Cumber 054 Rito 326
Blackcap 231 of Mc Cumber

Ind. Record	
BW	89
WW	762
205	668
WR	95
ADG	2.64
YW	1,100
365	1,090
YR	91
IMF	4.33/116
REA	9.9/85
FAT	0.24/100

EPDs										Dam's Prod.		
BW	WW	YW	Milk	SC	IMF	REA	Fat	\$W	\$B	BW	WW	YW
2.8	42	1+75	25	1+.92	1+.31	1-.25	1+.031	25.05	22.18	7/96	7/101	7/100

Long bodied, smooth fronted and attractive best describe this son of Mc Cumber 004 Traveler 6120. He is a lighter birth weight 6120, but still falls outside our parameters for a heifer bull. His pathfinder dam has consistently done a nice job, and is double bred to Miss Wix 365 of Mc Cumber.



Sire of
Lot 71.

Lot: **71** Mc Cumber 551 T Value 8142

Calved	Reg. #	Ind. Record	
2/10/2008	16102187	BW	99
		WW	754
		205	710
		WR	101
		ADG	2.74
		YW	1,105
		365	1,148
		YR	96
		IMF	2.76/74
		REA	10.2/87
		FAT	0.2/83

Mc Cumber 7111 Total Value	Vermillion Dateline 7078
Mc Cumber Total Value 551	Miss Wix 7111 of Mc Cumber
B Pride 9124 of Mc Cumber	Sitz Traveler 9929
	B Pride 839 of Mc Cumber
	Mc Cumber 6122 Equator 8113
Mc Cumber 8113 Equator 1190	B Pride 7159 of Mc Cumber
Miss Wix 477 of Mc Cumber	Sitz Traveler 5556
Miss Wix 2024 HC Mc Cumber	Miss Wix 7111 of Mc Cumber

EPDs										Dam's Prod.		
BW	WW	YW	Milk	SC	IMF	REA	Fat	\$W	\$B	BW	WW	YW
3.8	40	1+69	23		1+.03	1-.14	1+.021	22.96	12.63	2/107	2/106	2/104

This moderate framed, deep bodied, wide based son of 551 is a real eye catcher. He is excellent on his feet and legs and moves athletically as travels. He traces to Miss Wix 365 of Mc Cumber 4 times in 5 generations and his dam has been outstanding to this point. She is extremely fertile settling AI every year even after raising twins. Miss Wix 477 is moderate framed and has an excellent udder. She has been very productive to this point with a WWR 2/106 and a YWR 2/104. Her only other son sold last year to Wes Elston in ND. Fertility and productivity are bred into this good bull.

Lot: **72** Mc Cumber 551 T Value 816

Calved	Reg. #	Ind. Record	
1/20/2008	16102202	BW	88
		WW	786
		205	687
		WR	98
		ADG	2.78
		YW	1,142
		365	1,132
		YR	95
		IMF	3.82/103
		REA	12.6/108
		FAT	0.17/71

Mc Cumber 7111 Total Value	Vermillion Dateline 7078
Mc Cumber Total Value 551	Miss Wix 7111 of Mc Cumber
B Pride 9124 of Mc Cumber	Sitz Traveler 9929
	B Pride 839 of Mc Cumber
	A A R New Trend
BT New Trend 172K	BT Everelda Entense 57D
Rosetta 376 of Mc Cumber	G D A R Band 477
Rosetta 849 of Mc Cumber	Rosetta 541 of Mc Cumber

EPDs										Dam's Prod.		
BW	WW	YW	Milk	SC	IMF	REA	Fat	\$W	\$B	BW	WW	YW
2.4	37	1+60	25	1+.58	1+.06	1+.05	1+.004	26.8	16.28	4/102	4/99	4/97

816 is a ruggedly built, heavy muscled, big scrotomed son of Mc Cumber Total Value 551. He nearly hit the 800 lb. mark at weaning and scanned very well with an IMF of 3.82 to ratio 103, and had REA of 12.6 to ratio 108. His dam has produced sons that have sold to Ben Walters, Daniel Eckroth, and Allan and Wanita Olson. 816 is designed to work in any environment.



Lot: **73** Mc Cumber 2700 RT Time 863

Calved	Reg. #	Ind. Record	
1/27/2008	16103693	BW	97
		WW	784
		205	696
		WR	99
		ADG	2.94
		YW	1,160
		365	1,166
		YR	98
		IMF	3.03/81
		REA	11.4/97
		FAT	0.21/88

N Bar Emulation EXT	Emulation N Bar 5522
Leachman Right Time	N Bar Primrose 2424
Leachman Erica 0025	Tehama Bando 155
	Leachman Erica 8058
	Mc Cumber 124 Traveler 212
Mc Cumber Foundation 701	Miss Wix 235 of Mc Cumber
Lady Barbola 171 Mc Cumber	G D A R Gold Nugget 766
Lady Barbola 684 Mc Cumber	G D A R Lady Barbola 4186

EPDs										Dam's Prod.		
BW	WW	YW	Milk	SC	IMF	REA	Fat	\$W	\$B	BW	WW	YW
3.2	36	1+68	22	1+.31	1-.06	1-.10	1+.011	21.31	12.01	6/105	6/104	6/103

The mating of Right Time on Foundation daughters has cow-maker written all over it. 863 should be no exception. 863 weaned off his pathfinder dam at nearly 800 lbs. without creep and is a long bodied, sound structured bull. His dam is an outstanding pathfinder daughter of Foundation. She has an excellent udder, is deep bodied, and has a large well shaped hoof. Her production has been outstanding with a WWR of 6/104, YWR 6/103 and REA 6/103. She has produced two sons that have sold for an average of \$4750 to Crider Ranch, and Larry and David Kraft. 863 has an outstanding dam behind him, and I would expect him to sire outstanding females.

Maternal brothers
to Lot 73.



Lot: **74** Mc Cumber 9802 Valubull 827

Calved 1/22/2008	Reg. # 16102275	Ind. Record		
		BW	79	
		WW	720	
		205	711	
		WR	102	
		ADG	2.77	
		YW	1,074	
		365	1,154	
		YR	97	
		IMF	2.93/79	
		REA	11.5/98	
		FAT	0.14/58	

Sitz Value 7097
Sitz Triangle S Valubull
Sitz Barbaramere Nell 1590

S A V 8180 Traveler 004
Gale 6008 of Mc Cumber
Gale 045 of Mc Cumber

Sitz Traveler 6802
Sitz Eisa Evergreen 791
D H D Traveler 6807
Sitz Barbaramere Nell 2124
Sitz Traveler 8180
Boyd Forever Lady 8003
A A R New Trend
Gale 783 of Mc Cumber

EPDs										Dam's Prod.		
BW	WW	YW	Milk	SC	IMF	REA	Fat	\$W	\$B	BW	WW	YW
1	44	1+76	23		1+.15	1+.03	1+.007	29.3	21.97	1/94	1/102	1/97

Recommended for use on heifers- 827 is a unique pedigreed calving ease prospect. He weaned off with a 205 day weight of 711 lbs. to ratio 102 as his dam's first calf. His a moderate framed, deep bodied, thick butted son of Valubull, and descends from one of the top females that has ever been on this Ranch. After his dam he traces to 5 consecutive generations of pathfinders that excelled for fertility, productivity, and longevity.



Gale 045 of Mc Cumber
Grand dam of Lot 74.

Lot: **75** Mc Cumber 6120 Traveler 892

Calved 1/31/2008	Reg. # 16102332	Ind. Record		
		BW	90	
		WW	714	
		205	682	
		WR	97	
		ADG	3.3	
		YW	1,136	
		365	1,210	
		YR	101	
		IMF	4.05/109	
		REA	10.6/91	
		FAT	0.17/71	

S A V 8180 Traveler 004
Mc Cumber 004 Traveler 6120
Erianna 2206 of Mc Cumber

Leachman Right Time
Miss Wix 503 of Mc Cumber
Miss Wix 201 of Mc Cumber

Sitz Traveler 8180
Boyd Forever Lady 8003
Mc Cumber 6122 Equator 8113
Erianna 880 of Mc Cumber
N Bar Emulation EXT
Leachman Erica 0025
Tehama Bando 155
Miss Wix 365 of Mc Cumber

EPDs										Dam's Prod.		
BW	WW	YW	Milk	SC	IMF	REA	Fat	\$W	\$B	BW	WW	YW
2.2	46	1+86	23	1+.68	1+.20	1-.10	1+.016	25.45	29.77	2/103	2/102	2/102

This 6120 son is out of an easy fleshing, perfect uddered daughter of Right Time. He has an expressive-muscled rear quarter and is extremely long bodied. He has a gain ratio of 108 and earned a 365 day weight of 1210 lbs. to ratio 101. His dam is a member of the Miss Wix cow family and traces directly to Miss Wix 365 of Mc Cumber. Her only other son sold in last year's bull sale to Ernie Boehm.



Maternal Brother to Lot 75.

Lot: **76** Mc Cumber 4X13 Extra 8210

Calved 3/10/2008	Reg. # 16102254	Ind. Record		
		BW	87	
		WW	675	
		205	673	
		WR	96	
		ADG	2.66	
		YW	1,015	
		365	1,099	
		YR	92	
		IMF	3.91/105	
		REA	12.2/104	
		FAT	0.28/117	

N Bar Emulation EXT
Sinclair Extra 4X13
N Bar Lady Ida S C C 2P37

BT Dolan 74D
FV Holly 1428
Fairview Holly 6120

Emulation N Bar 5522
N Bar Primrose 2424
N Bar Prime Time D806
N Bar Lady Ida F1080
Leachman Right Time
Sitz Everelda Entense 1905
R A High Trend
Holly of Fairview 1149

EPDs										Dam's Prod.		
BW	WW	YW	Milk	SC	IMF	REA	Fat	\$W	\$B	BW	WW	YW
0.8	35	1+61	21	1-.11	1+.25	1+.15	1+.038	27.25	30.15	6/96	6/104	6/101

Selling 2/3 interest and full possession- Recommended for use on heifers- One of the youngest bulls in this sale, but certainly possesses qualities not to be overlooked. 8210 is a heavy muscled, moderate framed, deep bodied son of 4x13 with extra shape to top and rear quarter. He scanned superbly with an IMF of 3.91 to ratio 105 and had a REA of 12.2 to ratio 104. His dam is an easy fleshing, super uddered grand daughter of Right Time that exhibits the body type that should shine in a low input, forage based management system. She has produced two sons that have sold to Gurr Lake Angus Ranch, and her 2007 born son sold in last year's sale to Isaak Angus Ranch for \$9500.



Maternal brother to Lot 76.

Lot: **77** Mc Cumber 536P Ext 8189

Calved 2/28/2008	Reg. # 16102230	Ind. Record		
		BW	94	
		WW	726	
		205	699	
		WR	100	
		ADG	3	
		YW	1,110	
		365	1,179	
		YR	99	
		IMF	3.01/81	
		REA	11.4/97	
		FAT	0.19/79	

N Bar Emulation EXT
Sitz JLS Emulation Ext 536P
Ideal 4465 of 6807 4286

Leachman Right Time
Lassie 305 of Mc Cumber
Lassie 1160 of Mc Cumber

Emulation N Bar 5522
N Bar Primrose 2424
D H D Traveler 6807
E E 4286 of Ideal 2240 1254
N Bar Emulation EXT
Leachman Erica 0025
Mc Cumber 6122 Equator 8113
Lassie 841 of Mc Cumber

EPDs										Dam's Prod.		
BW	WW	YW	Milk	SC	IMF	REA	Fat	\$W	\$B	BW	WW	YW
3.3	39	1+72	23		1+.05	1-.06	1+.007	22.52	24.84	4/101	4/103	2/103

Like the mating of 4x13 on Right Time daughters, the mating of 536P on Right Times works extremely well too. 8189 is a well balanced bull. Along with this he is stout, naturally thick, and deep from fore rib to flank. His moderate framed, easy fleshing, good uddered dam has done a very good job to this point. She has a WWR of 4/103, and a YWR 2/103.

Lot: **78** Mc Cumber 2700 RT Time 8103

Calved		Reg. #		Ind. Record	
2/2/2008		16103676		BW	93
				WW	802
				205	721
				WR	103
				ADG	2.47
				YW	1,118
				365	1,116
				YR	94
				IMF	3.72/100
				REA	11.2/96
				FAT	0.18/75

N Bar Emulation EXT		Emulation N Bar 5522	
Leachman Right Time		N Bar Primrose 2424	
Leachman Erica 0025		Tehama Bando 155	
		Leachman Erica 8058	
		Sitz Traveler 9929	
BT Traveler 228K		BT Everelda Entense 57D	
B Pride 273 of Mc Cumber		Mc Cumber 124 Traveler 212	
B Pride 690 of Mc Cumber		B Pride 245 of Mc Cumber	

EPDs										Dam's Prod.		
BW	WW	YW	Milk	SC	IMF	REA	Fat	\$W	\$B	BW	WW	YW
2.4	37	1+62	25	1+.08	1+.13	1-.10	1+.017	25.65	19.72	5/100	5/103	5/101

Extremely long bodied, extra smooth, and athletic in his movement best describes this Right Time son. He hit the 800 lb. mark at weaning and earned a 205 day weight of 721 to ratio 103. His dam and grand dam have never missed AI and his great grand dam is still in production for Sterling Land and Livestock in TX at the age of 17.



Dam of Lot 79, shown as heifer calf.



Maternal grand dam of Lot 79.

Lot: **79** Mc Cumber 4X13 Extra 8109

Calved		Reg. #		Ind. Record	
2/3/2008		16102163		BW	80
				WW	706
				205	715
				WR	102
				ADG	2.92
				YW	1,080
				365	1,182
				YR	99
				IMF	3.52/95
				REA	11.6/99
				FAT	0.19/79

N Bar Emulation EXT		Emulation N Bar 5522	
Sinclair Extra 4X13		N Bar Primrose 2424	
N Bar Lady Ida S C C 2P37		N Bar Prime Time D806	
		N Bar Lady Ida F1080	
		Sitz Traveler 8180	
S A V 8180 Traveler 004		Boyd Forever Lady 8003	
Miss Wix 6002 of Mc Cumber		N Bar Emulation EXT	
Oak Hill Miss Wix 9402		Homestretch Miss Wix 663	

EPDs										Dam's Prod.		
BW	WW	YW	Milk	SC	IMF	REA	Fat	\$W	\$B	BW	WW	YW
0.9	45	1+82	22		1+.26	1-.13	1+.053	28.35	28.52	1/95	1/102	1/99

Selling 2/3 interest and full possession- Recommended for use on heifers- Cow power and plenty of performance combine to make 8109 an intriguing calving ease prospect. 8109 earned a 205 day weight of 715 lbs. to ratio 102 as his dam's first calf. He is a free moving, good footed bull that is moderate framed, easy fleshing and full of libido. His dam is an outstanding uddered daughter of 004, and is currently nursing a super heifer calf by 536P. His grand dam is a top donor for us and the dam to the herd sire prospect selling as Lot 2 in this sale. 8109 traces to EXT 6 times in 7 generations.



Dam of Lot 80.



Maternal brother of Lot 80, 6120.

Lot: **80** Mc Cumber Right Time 8022

Calved		Reg. #		Ind. Record	
2/19/2008		16103671		BW	96
				WW	766
				205	719
				WR	100
				ADG	2.69
				YW	1,110
				365	1,149
				YR	100
				IMF	2.96/82
				REA	11.3/101
				FAT	0.18/78

N Bar Emulation EXT		Emulation N Bar 5522	
Leachman Right Time		N Bar Primrose 2424	
Leachman Erica 0025		Tehama Bando 155	
		Leachman Erica 8058	
		Mc Cumber Equator 6122	
Mc Cumber 6122 Equator 8113		Rosetta 421 of Mc Cumber	
Erianna 2206 of Mc Cumber		Mc Cumber 124 Traveler 212	
Erianna 880 of Mc Cumber		Erianna 250 of Mc Cumber	

EPDs										Dam's Prod.		
BW	WW	YW	Milk	SC	IMF	REA	Fat	\$W	\$B	BW	WW	YW
1+3.1	1+44	1+85	1+25	1+.32	1+.05	1-.02	1+.008	25.34	28.15	5/106	5/109	4/113

8022 is a maternal brother to Mc Cumber 004 Traveler 6120, and the maternal brother to Lot 35 in this sale. He is cut from the same mold as his maternal brother and weaned off his recipient dam at 766 lbs. Erianna 2206 is a top producer, and is a member of the ET program. Her production and fertility have been outstanding. She a WWR of 5/109, and a YWR 4/113.

Lot: **81** Mc Cumber 4X13 Extra 8042

Calved		Reg. #		Ind. Record	
2/1/2008		16266347		BW	82
				WW	630
				205	682
				WR	109
				ADG	3.1
				YW	1,104
				365	1,178
				YR	108
				IMF	3.48/95
				REA	12.4/111
				FAT	0.26/118

N Bar Emulation EXT		Emulation N Bar 5522	
Sinclair Extra 4X13		N Bar Primrose 2424	
N Bar Lady Ida S C C 2P37		N Bar Prime Time D806	
		N Bar Lady Ida F1080	
		Mc Cumber Equator 6122	
Mc Cumber 6122 Equator 419		Rosetta 162 of Mc Cumber	
Rosetta 6140 of Mc Cumber		BT New Trend 172K	
Rosetta 4159 of Mc Cumber		Rosetta 9184 of Mc Cumber	

EPDs										Dam's Prod.		
BW	WW	YW	Milk	SC	IMF	REA	Fat	\$W	\$B	BW	WW	YW
1+1.1	1+42	1+81	1+24		1+.27	1+.02	1+.029	26.36	36.43	1/101	1/102	1/104

Recommended for use on heifers- 8042 represents a unique blending of calving ease, marbling, and muscle. 8042 is a wide based, thick topped son of 4x13. Along with this he is free moving, and deep bodied. He scanned a REA of 12.4 to ratio 111, and earned a YWR of 104. His dam is an excellent uddered daughter of Mc Cumber 6122 Equator 419.



Maternal brother to Lot 82.

Lot: **82** Mc Cumber 4X13 Extra 881

Calved	Reg. #	Ind. Record		
1/30/2008	16102323	BW	62	
		WW	725	
		205	724	
		WR	103	
		ADG	2.66	
		YW	1,065	
		365	1,150	
		YR	96	
		IMF	4.52/122	
		REA	12.1/103	
		FAT	0.23/96	

N Bar Emulation EXT	Emulation N Bar 5522
Sinclair Extra 4X13	N Bar Primrose 2424
N Bar Lady Ida S C C 2P37	N Bar Prime Time D806
	N Bar Lady Ida F1080
	A A R New Trend
BT New Trend 172K	BT Everelda Entense 57D
Miss Wix 398 of Mc Cumber	Mc Cumber 124 Traveler 212
Miss Wix 7007 of Mc Cumber	Miss Wix 030 of Mc Cumber

EPDs										Dam's Prod.		
BW	WW	YW	Milk	SC	IMF	REA	Fat	\$W	\$B	BW	WW	YW
1+.7	1+35	1+63	1+26	1+.41	1+.45	1-.08	1+.040	27.57	29.23	2/95	2/104	2/100

Recommended for use on heifers- 881 is a moderate framed, wide based, super sound bull with a Lot of pop to his top and depth of rib. He is a twin to a heifer and started life at 62 lbs. He still managed to wean off his heavy milking dam at over 700 lbs. and combined that with tremendous ultrasound data. He scanned an IMF of 4.52 to ratio 122, and had a REA of 12.1 to ratio 103. His dam is a feminine, perfect uddered daughter of BT New Trend 172K, and is extremely fertile, and productive. Miss Wix 398 has produced two sons that have sold through previous sale for an average of \$4250 to Tony Lindseth in IA, and Neil and Norman Johnson in ND.

881 not only has an impeccable pedigree that traces to EXT, 212, AAR New Trend, Rito 054, Shoshone Viking, and 376, but he has true calving ease, plenty of performance, and excellent carcass traits.

Lot 082 - Maternal Production Record						
	BW	WW	YW	IMF	REA	Pathfinder
Miss Wix 398	2/95	2/104	2/100	5/112	2/100	
Miss Wix 7007	7/97	7/105	6/103	11/99	11/101	
Miss Wix 030	3/102	3/111	2/109			
Miss Wix 235	10/108	10/10	9/104			
Miss Wix 117	10/102	10/119	9/111			X

Lot: **83** Mc Cumber 9802 Valubull 8036

Calved	Reg. #	Ind. Record		
1/27/2008		BW	83	
		WW	690	
		205	730	
		WR	117	
		ADG	3.20	
		YW	1,180	
		365	1,242	
		YR	114	
		IMF	4.52/122	
		REA	12.1/103	
		FAT	0.23/96	

Sitz Value 7097	Sitz Traveler 6802
Sitz Triangle S Valubull	Sitz Eisa Evergreen 791
Sitz Barbaramere Nell 1590	DHD Traveler 6807
	Sitz Barbaramere Nell 2124
	Vermilion Dateline 7078
Sitz Tradition RLS 8702	RLS Eisa Evergreen 5018
Miss Wix 608 of Mc Cumber	Mc Cumber 054 Rito 5009
Miss Wix 928 of Mc Cumber	Miss Wix 498 of Mc Cumber

EPDs										Dam's Prod.		
BW	WW	YW	Milk	SC	IMF	REA	Fat	\$W	\$B	BW	WW	YW
1+2.1	1+55	1+90	1+18		1+.17	1+.14	1+.021	29.33	32.19	1/102	1/109	1/109

Recommended for use on heifers- Where has this bull been? 8036 is a tremendously long bodied, thick made son of Sitz Valubull 9802, and has performed well at every measure. He earned a 205 day weight of 730 lbs as his dam's first calf, gained well on test and recorded a 365 day weight of 1242 lbs. to ratio 109. His dam is a high volume, thick made, neat uddered daughter of Sitz Tradition that is off to an outstanding start. If you are looking for a little more frame in a heifer bull, 8036 might fit the bill.

Lot: **84** Mc Cumber 536P Ext 8223

Calved	Reg. #	Ind. Record		
3/20/2008	16102264	BW	99	
		WW	650	
		205	672	
		WR	96	
		ADG	3.63	
		YW	1,115	
		365	1,253	
		YR	105	
		IMF	5.66/152	
		REA	12.1/103	
		FAT	0.37/154	

N Bar Emulation EXT	Emulation N Bar 5522
Sitz JLS Emulation Ext 536P	N Bar Primrose 2424
Ideal 4465 of 6807 4286	D H D Traveler 6807
	E E 4286 of Ideal 2240 1254
	A A R New Trend
BT New Trend 172K	BT Everelda Entense 57D
Miss Wix 373 of Mc Cumber	Papa Equator 2928
Miss Wix 555 of Mc Cumber	Miss Wix 051 of Mc Cumber

EPDs										Dam's Prod.		
BW	WW	YW	Milk	SC	IMF	REA	Fat	\$W	\$B	BW	WW	YW
5.2	35	1+70	25	1+.38	1+.36	1+.09	1+.026	15.95	42.82	4/109	4/102	4/106

Selling 2/3 interest and full possession- 8223 is the youngest bull in the sale, but does not give anything up to his older contemporaries. Long bodied, heavy muscled, deep bodied, and good looking are all terms that could be used to describe this bull. He was one of the top gaining bulls on test with a gain ratio of 119, and earned a 365 day weight of 1253 lbs. to ratio 105. To go along with this, he is the #2 bull for IMF with a score of 5.66 to ratio 152, and scanned a REA of 12.1 to ratio 103. His dam has been top-notch to this point with a WWR of 4/102, YWR 4/106, IMF 4/119, and REA 4/102. She has produced one son that sold to Bar V Ranch in 2007, and both of her daughters have been retained as replacements. Make sure to find this good young bull, he has the bred in ability to sire forage efficient, quick performing offspring with exceptional carcass and conversion traits.



Sire of Lot 84.

Lot: **85** Mc Cumber Timberwolf 8136

Calved 2/8/2008 Reg. # 16102182

Wulffs Ext 6106
LT Timberwolf 5014
L T Ethelda 3245

Mc Cumber 7078 VRD 3116
Lassie 5134 of Mc Cumber
Lassie 2140 of Mc Cumber

N Bar Emulation EXT
Wulffs Erica Dianna C116
Sitz Value 7097
L T Ethelda 9012
Vermilion Dateline 7078
Gale 836 of Mc Cumber
BT New Trend 172K
Lassie 914 of Mc Cumber

Ind. Record	
BW	72
WW	626
205	613
WR	88
ADG	3.38
YW	1,058
365	1,154
YR	97
IMF	4.4/118
REA	11.5/98
FAT	0.2/83

EPDs										Dam's Prod.		
BW	WW	YW	Milk	SC	IMF	REA	Fat	\$W	\$B	BW	WW	YW
0	42	+79	19		+0.20	+0.06	+0.001	26.69	27.02	2/80	2/96	2/100

Recommended for use on heifers- This calving ease son of LT Timberwolf 5014 is moderate framed, naturally thick, and deep from fore rib to flank. He combines this with a birth weight of 72 lbs, Calving Ease Direct of +11, and a BW EPD of +0. He got a little sick last spring which really set him back at weaning, however he came on this winter and had a gain ratio of 110 on a 42 Mega Cal diet. His dam is near ideal in type with an abundance of rib, thickness from front to rear, and an outstanding udder with small well placed teats, and superior udder suspension.



Above: dam of Lot 87. Right: maternal brother of Lot 87.

Lot: **87** Mc Cumber 4X13 Extra 8201

Calved 3/4/2008 Reg. # 16102244

N Bar Emulation EXT
Sinclair Extra 4X13
N Bar Lady Ida S C C 2P37

BT New Trend 172K
B Pride 2219 JVR Mc Cumber
B Pride 287 of Mc Cumber

Emulation N Bar 5522
N Bar Primrose 2424
N Bar Prime Time D806
N Bar Lady Ida F1080
A A R New Trend
BT Everelda Entense 57D
054 P J M 1438
B Pride 4103 of Mc Cumber

Ind. Record	
BW	88
WW	720
205	704
WR	101
ADG	2.66
YW	1,060
365	1,130
YR	95
IMF	4.99/134
REA	10.5/90
FAT	0.22/92

EPDs										Dam's Prod.		
BW	WW	YW	Milk	SC	IMF	REA	Fat	\$W	\$B	BW	WW	YW
0.6	36	+64	24	+0.36	+0.45	+0.27	+0.023	27.94	33.21	5/101	5/104	5/104

Selling 2/3 interest and full possession- Recommended for use on heifers- This moderate framed, naturally thick son of 4x13 has a masculine beef bull look. He combines calving ease, marbling, and plenty of performance with the ability to sire moderate, problem free, easy fleshing cattle. His dam is my personal favorite daughter of BT New Trend 172K. She is feminine fronted yet possess abundant rib, natural thickness, and a flawless udder. This pathfinder cow is sound on her feet and legs, and has produced 4 sons that have sold through our bull sales for an average of \$3500 to Mike Frank in MN, Joe and Gerald Bohl, Jay and Frank Cudworth, and C.R. Nixon in OK. The cows behind her have been outstanding as well.

Lot 087 - Maternal Production Record

	BW	WW	YW	IMF	REA	Pathfinder
B Pride 2219	5/101	5/104	5/104	5/110		X
B Pride 287	9/107	9/106	7/102	9/99		X
B Pride 4103	11/94	11/97	7/97			
B Pride 937	8/108	9/113	6/111			X

Lot: **86** Mc Cumber 383 Tradition 8125

Calved 2/6/2008 Reg. # 16102174

Leachman Right Time
Mc Cumber Tradition 383
Lassie 7015 of Mc Cumber

BT New Trend 172K
Rosetta 350 HC of Mc Cumber
Rosetta 9184 of Mc Cumber

N Bar Emulation EXT
Leachman Erica 0025
Mc Cumber 124 Traveler 212
Lassie 648 of Mc Cumber
A A R New Trend
BT Everelda Entense 57D
Circle Oak Lucys Boy 625
Rosetta 777 HC of Mc Cumber

Ind. Record	
BW	95
WW	722
205	656
WR	94
ADG	3.22
YW	1,134
365	1,171
YR	99
IMF	3.19/86
REA	10.9/93
FAT	0.21/88

EPDs										Dam's Prod.		
BW	WW	YW	Milk	SC	IMF	REA	Fat	\$W	\$B	BW	WW	YW
4.2	28	+65	23		+0.07	+0.20	+0.014	13.98	15.5	2/108	2/98	2/102

8125 is a long bodied, deep made bull with a free and easy stride. His dam displays abundant width and depth to her rib and has been extremely fertile.

She has produced 3 sons that have sold through previous bull sales to Darrel Walter, Kirk Johnson, and Zac and Noah Hall.



702 is a full brother to Lot 86.

Lot: **88** Mc Cumber 513 Traveler 8100

Calved	Reg. #	Ind. Record	
2/1/2008	16102157	BW	91
		WW	722
		205	648
		WR	93
		ADG	2.98
		YW	1,104
		365	1,125
		YR	95
		IMF	3.1/83
		REA	12.3/105
		FAT	0.19/79

S A V 8180 Traveler 004
 Mc Cumber 004 Traveler 513
 Miss Wix 301 of Mc Cumber

Vermilion Dateline 7078
 B Pride 310 of Mc Cumber
 B Pride 483 of Mc Cumber

Sitz Traveler 8180
 Boyd Forever Lady 8003
 Leachman Right Time
 Miss Wix 1119 of Mc Cumber
 Connealy Dateline
 Vermilion Blackbird 5044
 Mc Cumber 124 Traveler 212
 B Pride 71 of Mc Cumber

EPDs											Dam's Prod.		
BW	WW	YW	Milk	SC	IMF	REA	Fat	\$W	\$B		BW	WW	YW
2.6	39	1+80	20	1+.49	1-.01	1+.30	1+.023	20.54	22.8		4/96	4/95	3/97

8100 is a big topped, long bodied son of Mc Cumber 004 Traveler 513. He scanned a REA of 12.3 to ratio 105 and has a REA EPD of +.30 which ranks in the top 25% of the breed for non-parent Angus bulls. His dam is a perfect uddered daughter of VRD, and descends from a line of cows that has 3 pathfinders in 4 generations. She has produced one son that sold to Leonard Schmaltz through last year's sale.

Lot: **89** Mc Cumber 4X13 Extra 8033

Calved	Reg. #	Ind. Record	
1/25/2008	16266339	BW	85
		WW	612
		205	654
		WR	105
		ADG	2.82
		YW	1,044
		365	1,105
		YR	101
		IMF	3.9/106
		REA	10.9/97
		FAT	0.21/95

N Bar Emulation EXT
 Sinclair Extra 4X13
 N Bar Lady Ida S C C 2P37

Mc Cumber 7078 VRD 3108
 Lassie 6199 of Mc Cumber
 Lassie 331 of Mc Cumber

Emulation N Bar 5522
 N Bar Primrose 2424
 N Bar Prime Time D806
 N Bar Lady Ida F1080
 Vermilion Dateline 7078
 Lassie 974 of Mc Cumber
 Leachman Right Time
 Lassie 708 of Mc Cumber

EPDs											Dam's Prod.		
BW	WW	YW	Milk	SC	IMF	REA	Fat	\$W	\$B		BW	WW	YW
1+2.0	1+35	1+70	1+20		1+.29	1-.20	1+.017	21.27	28.3		1/104	1/98	1/97

Recommended for use on heifers- Wide based, deep bodied, and thick from front to rear best describe this calving ease prospect by 4x13. His dam is a perfect uddered, sound footed member of the Lassie cow family. Be sure to look him up on sale day.

Sale Day Telephones

701.246.3366
 701.871.9800
 701.871.1072

Or Contact Superior Productions at
 1-800-431-4452 to pre-register for a buyer's
 number and gain access to the bid line number.

McCumber
 Angus
 Ranch

Lot: **90** Mc Cumber Timberwolf 8041

Calved	Reg. #	Ind. Record	
1/31/2008	16266346	BW	86
		WW	620
		205	671
		WR	107
		ADG	2.9
		YW	1,064
		365	1,135
		YR	104
		IMF	3.84/105
		REA	10.8/96
		FAT	0.23/105

Wulffs Ext 6106
 LT Timberwolf 5014
 L T Ethelda 3245

Mc Cumber Total Value 449
 Gale 690 of Mc Cumber
 Gale 439 of Mc Cumber

N Bar Emulation EXT
 Wulffs Erica Dianna C116
 Sitz Value 7097
 L T Ethelda 9012
 Mc Cumber 7111 Total Value
 Miss Wix 7007 of Mc Cumber
 S A V 8180 Traveler 004
 Gale 244 of Mc Cumber

EPDs											Dam's Prod.		
BW	WW	YW	Milk	SC	IMF	REA	Fat	\$W	\$B		BW	WW	YW
1+1.8	1+46	1+82	1+22		1+.11	1+.07	1+.010	27.37	28.23		1/105	1/101	1/100

Recommended for use on heifers- 8041 is a long bodied, deep ribbed son of LT Timberwolf 5014. He earned a 205 day weight of 672 lbs. as his dam's first calf. His dam is a moderate framed, perfect uddered daughter of Mc Cumber Total Value 449, and she without a doubt weaned off well over 50% of her body weight.

Lot: **91** Mc Cumber 4X13 Extra 849

Calved	Reg. #	Ind. Record	
1/25/2008	16102293	BW	77
		WW	656
		205	659
		WR	94
		ADG	3.12
		YW	1,055
		365	1,158
		YR	97
		IMF	5.98/161
		REA	10.3/88
		FAT	0.28/117

N Bar Emulation EXT
 Sinclair Extra 4X13
 N Bar Lady Ida S C C 2P37

Mc Cumber 7078 VRD 3108
 B Pride 6163 of Mc Cumber
 B Pride 2185 of Mc Cumber

Emulation N Bar 5522
 N Bar Primrose 2424
 N Bar Prime Time D806
 N Bar Lady Ida F1080
 Vermilion Dateline 7078
 Lassie 974 of Mc Cumber
 Mc Cumber 054 Rito 326
 B Pride 5122 of Mc Cumber

EPDs											Dam's Prod.		
BW	WW	YW	Milk	SC	IMF	REA	Fat	\$W	\$B		BW	WW	YW
1	34	1+67	21		1+.53	1-.08	1+.038	24.64	29.36		1/92	1/94	1/97

Recommended for use on heifers- 849 is the #1 marbling bull of the sale. He scanned 5.98 for IMF with a ratio of 161. His marbling EPD of +.53 ranks in the top 15% of the breed for non-parent Angus bulls. This 4 frame tank may not be for everyone, however I would expect him to not only inject marbling into his offspring, but sire females that will thrive in a low input, forage based management scenario. 849 is naturally thick, deep ribbed, and puts a foot down in



all four corners. His dam is a beautiful female that is long, deep, and has a near perfect udder.

Sire of Lot 91.

Lot: **92** Mc Cumber 536P Ext 8205

Calved	Reg. #	Ind. Record	
3/6/2008	16102248	BW	91
		WW	690
		205	721
		WR	103
		ADG	2.84
		YW	1,053
		365	1,175
		YR	99
		IMF	4.69/126
		REA	11.1/95
		FAT	0.26/108

EPDs										Dam's Prod.		
BW	WW	YW	Milk	SC	IMF	REA	Fat	\$W	\$B	BW	WW	YW
3	41	1+74	28		1+.24	1+.01	1+.029	24.75	28.49	2/106	2/105	2/102

The combination of EXT, 6807, and Alliance which has worked so well across the country, has come to fruition again in this top-notch son of 536P. 8205 is a calf I have liked since birth. He is thick, square, and deep. Along with this, he stands wide and true on his feet and legs. This March born bull earned a 205 day weight of 721 lbs. to ratio 103, and recorded an IMF of 4.69 to ratio 126. His Alliance bred dam is moderate framed, deep bodied, and has a neat, well proportioned udder. Her only daughter was retained as a replacement and is doing an excellent job with her first calf.



Sire of Lot 92.

Lot: **93** Mc Cumber 2700 RT Time 8120

Calved	Reg. #	Ind. Record	
2/5/2008	16103681	BW	79
		WW	672
		205	626
		WR	89
		ADG	3.16
		YW	1,076
		365	1,132
		YR	95
		IMF	4.97/134
		REA	10.1/86
		FAT	0.19/79

EPDs										Dam's Prod.		
BW	WW	YW	Milk	SC	IMF	REA	Fat	\$W	\$B	BW	WW	YW
1.5	35	1+74	23	1+.54	1+.15	1-.06	1+.016	22.66	23.52	3/91	3/101	3/102

Recommended for use on heifers- 8120 is a thick made, moderate framed, big scrotaled son of Right Time. He is a maternal brother to one of the sale features of our 2007 bull sale which sold for \$7000 to TL Ranch in MO. His dam is an outstanding daughter of Boyd New Day with an abundance of thickness, and capacity. Her only daughter was retained and is nursing her first calf.

Lot: **94** Mc Cumber 536P Ext 875

Calved	Reg. #	Ind. Record	
1/29/2008	16102317	BW	77
		WW	708
		205	648
		WR	93
		ADG	2.91
		YW	1,080
		365	1,114
		YR	94
		IMF	4.93/133
		REA	11/94
		FAT	0.2/83

EPDs										Dam's Prod.		
BW	WW	YW	Milk	SC	IMF	REA	Fat	\$W	\$B	BW	WW	YW
1.1	36	1+62	23		1+.32	1+.01	1+.018	27.66	21.47	3/86	3/99	3/96

Recommended for use on heifers- One of the only sons of 536P to be recommended for heifers. His calving ease is not only confirmed by the fact that he had a 79 lb. birth weight, but that his dam has produced 3 calves with an average birth weight of only 72 lbs. and has a BWR of 3/86, which is well below average. His full sister who was retained here had her first calf this winter with only a 55 lb. birth weight, but is growing well. 875 is representative of the 536P sire group. They are moderate framed, stout, naturally thick and extremely deep bodied.

Lot: **95** Mc Cumber 004 Traveler 874

Calved	Reg. #	Ind. Record	
1/29/2008	16102316	BW	94
		WW	668
		205	676
		WR	97
		ADG	3.06
		YW	1,060
		365	1,166
		YR	98
		IMF	4.03/108
		REA	11.2/96
		FAT	0.26/108

EPDs										Dam's Prod.		
BW	WW	YW	Milk	SC	IMF	REA	Fat	\$W	\$B	BW	WW	YW
1+4.5	1+42	1+80	1+26	1+1.29	1+.21	1-.10	1+.054	19.09	21.37	6/111	6/105	6/102

874 is the twin brother to the bull selling as Lot 32 in this sale. Their dam weaned off well over 1400lbs. of calf this past fall and settled AI. 874 is thick, deep, and very athletic in his movement. Along with this he extra shape and dimension to his rear quarter and recorded an IMF of 4.03 to ratio 108. His dam has produced sons that have sold to Wayne Kukla, Russel Lunde, Randy Smith and Lynn Hagen. 874 is one of only a few direct sons of 004 in the sale.



Maternal brother to Lot 95.

Mc Cumber Right Time.517

Lot: **96** Mc Cumber 4X13 Extra 8014

Calved 2/13/2008	Reg. # 16102144	Ind. Record		
		BW	85	
		WW	670	
		205	619	
		WR	100	
		ADG	2.77	
		YW	1,025	
		365	1,062	
		YR	100	
		IMF	3.63/100	
		REA	11.6/104	
		FAT	0.3/130	

N Bar Emulation EXT
Sinclair Extra 4X13
N Bar Lady Ida S C C 2P37

Emulation N Bar 5522
N Bar Primrose 2424
N Bar Prime Time D806
N Bar Lady Ida F1080

Mc Cumber Foundation 701
Rosetta 162 of Mc Cumber
Rosetta 601 of Mc Cumber

Mc Cumber 124 Traveler 212
Miss Wix 235 of Mc Cumber
G D A R Gold Nugget 766
Rosetta 421 of Mc Cumber

EPDs										Dam's Prod.		
BW	WW	YW	Milk	SC	IMF	REA	Fat	\$W	\$B	BW	WW	YW
1+.5	1+34	1+66	1+23	1-.01	1+.32	1-.16	1+.039	25.78	19.05	4/101	4/100	4/103

Selling 2/3 interest and full possession- Recommended for use on heifers- This is one of the flush brothers to the bulls selling as Lot 4, and Lot 102 in this sale. 8014 is long, moderate framed, smooth shouldered, and excellent on his feet and legs. His dam is a top Foundation daughter who not only is the dam of this outstanding flush of bulls, but produced a sale feature of our 2005 bull sale that sold for \$7500. Cow-maker is an obvious way to describe 8014 as well as his flush brothers.



Maternal brother of Lot 96.

Lot: **97** Mc Cumber 6PV20 Value 8193

Calved 3/1/2008	Reg. # 16102235	Ind. Record		
		BW	88	
		WW	729	
		205	770	
		WR	110	
		ADG	2.51	
		YW	1,050	
		365	1,172	
		YR	99	
		IMF	3.48/94	
		REA	11.1/95	
		FAT	0.22/92	

Sinclair Net Present Value
Sinclair True Value 6PV20
N Bar Miss Emulous A404

Mc Cumber Tradition 383
Rosetta 611 of Mc Cumber
Rosetta 294 of Mc Cumber

N Bar Prime Time D806
Ideal 4465 of 6807 4286
N Bar Emulation Ext Z52
N Bar Miss Emulous X3091
Leachman Right Time
Lassie 7015 of Mc Cumber
BT New Trend 172K
Rosetta 849 of Mc Cumber

EPDs										Dam's Prod.		
BW	WW	YW	Milk	SC	IMF	REA	Fat	\$W	\$B	BW	WW	YW
1.1	37	1+63	27		1+.26	1+.05	1+.030	28.43	28.14	1/103	1/110	1/99

8193 is one of the top weaning bulls in this sale. He earned a 205 day weight of 770 lbs. to ratio 110 as his dam's first calf. In addition to this he is long, stout, and heavy muscled. His dam is a moderate, perfect uddered daughter of Mc Cumber Tradition 383. If you are looking for additional pounds at weaning check out this bull.

Lot: **98** Mc Cumber Timberwolf 818

Calved 1/20/2008	Reg. # 16102221	Ind. Record		
		BW	95	
		WW	710	
		205	623	
		WR	89	
		ADG	3.13	
		YW	1,110	
		365	1,124	
		YR	94	
		IMF	4.08/110	
		REA	10.3/88	
		FAT	0.22/92	

Wulffs Ext 6106
LT Timberwolf 5014
L T Ethelda 3245

N Bar Emulation EXT
Wulffs Erica Dianna C116
Sitz Value 7097
L T Ethelda 9012

Mc Cumber Foundation 701
Miss Wix 193 of Mc Cumber
Miss Wix 5124 of Mc Cumber

Mc Cumber 124 Traveler 212
Miss Wix 235 of Mc Cumber
Mc Cumber Stretch 604
Miss Wix 256 of Mc Cumber

EPDs										Dam's Prod.		
BW	WW	YW	Milk	SC	IMF	REA	Fat	\$W	\$B	BW	WW	YW
3.4	35	1+63	16	1+.32	1+.24	1-.15	1-.012	20.11	18.94	6/104	6/93	6/98

818 is a bigger framed, long bodied, big testicled son of LT Timberwolf 5014. He combines this with a gain ratio of 102, and an IMF of 4.08 to ratio 110. His dam is a big bodied, extremely sound, nice uddered daughter of Mc Cumber Foundation 701. Although she is a more moderate milk cow, she has been extremely fertile and has settled AI every year.

Lot: **99** Mc Cumber 383 Tradition 896

Calved 2/1/2008	Reg. # 16102336	Ind. Record		
		BW	96	
		WW	760	
		205	683	
		WR	98	
		ADG	2.11	
		YW	1,030	
		365	1,021	
		YR	86	
		IMF	4.69/126	
		REA	11.2/96	
		FAT	0.24/100	

Leachman Right Time
Mc Cumber Tradition 383
Lassie 7015 of Mc Cumber

Mc Cumber Foundation 701
Blackcap 3021 of Mc Cumber
Papa Blackcap 9854

N Bar Emulation EXT
Leachman Erica 0025
Mc Cumber 124 Traveler 212
Lassie 648 of Mc Cumber
Mc Cumber 124 Traveler 212
Miss Wix 235 of Mc Cumber
Papa Rito T Intense DHD 6844
Papa Blackcap 7813

EPDs										Dam's Prod.		
BW	WW	YW	Milk	SC	IMF	REA	Fat	\$W	\$B	BW	WW	YW
4.9	29	1+50	21	1+.57	1+.18	1-.04	1+.002	16.59	9.21	4/107	4/103	4/97

Long bodied, smooth shouldered, and excellent on his feet and legs best describes this son of Mc Cumber Tradition 383. He weaned off his dam at 760 lbs. without creep and recorded an IMF of 4.69 to ratio 126. Along with this he had a REA/CWT of 1.12.



McCumber Tradition 383

Lot:
100 Mc Cumber Timberwolf 8040

Calved 1/31/2008 Reg. # 16266345

Wulffs Ext 6106
LT Timberwolf 5014
L T Ethelda 3245

N Bar Emulation EXT
Wulffs Erica Dianna C116
Sitz Value 7097
L T Ethelda 9012
A A R New Trend
Miss Wix 705 of Mc Cumber
BT Dolan 74D
Sitz Elsiemere 1374

Mc Cumber New Trend 1206
Elsiemere 6188 of Mc Cumber
FV Elsiemere 1384

Ind. Record	
BW	98
WW	630
205	681
WR	109
ADG	2.82
YW	1,062
365	1,132
YR	104
IMF	3.13/85
REA	9.4/84
FAT	0.19/86

EPDs										Dam's Prod.		
BW	WW	YW	Milk	SC	IMF	REA	Fat	\$W	\$B	BW	WW	YW
I+4.9	I+39	I+66	I+22		I+.07	I-.10	I-.014	20.34	22.02	1/119	1/102	1/100

This bigger framed son of Timberwolf moves with ease as he travels. His dam is a wide, made, deep bodied daughter of Mc Cumber New Trend 1206. He earned a 205 day weight of nearly 700 lbs. to ratio 102.



Brother to Lot 101.

Lot:
101 Mc Cumber 4X13 Extra 8038

Calved 1/28/2008 Reg. # 16266343

N Bar Emulation EXT
Sinclair Extra 4X13
N Bar Lady Ida S C C 2P37

Emulation N Bar 5522
N Bar Primrose 2424
N Bar Prime Time D806
N Bar Lady Ida F1080
Vermillion Dateline 7078
Gale 836 of Mc Cumber
BT New Trend 172K
Miss Wix 7007 of Mc Cumber

Mc Cumber 7078 VRD 3116
Miss Wix 659 of Mc Cumber
Miss Wix 398 of Mc Cumber

Ind. Record	
BW	85
WW	572
205	621
WR	99
ADG	3.01
YW	1,032
365	1,103
YR	101
IMF	4.1/112
REA	10/89
FAT	0.21/95

EPDs										Dam's Prod.		
BW	WW	YW	Milk	SC	IMF	REA	Fat	\$W	\$B	BW	WW	YW
I+2.0	I+40	I+74	I+22		I+.44	I-.16	I+.033	25.44	31.03	1/104	1/93	1/97

Recommended for use on heifers- 8038 is a long, smooth shouldered son of 4x13. He has extra width and dimension to his rear quarter, and combines this with an IMF of 4.1 to ratio 112. His dam is a moderate framed, easy fleshing, perfect uddered of Mc Cumber 7078 VRD 3116. He has done a nice job for us siring moderate framed, easy fleshing, super uddered daughters and the males are thick, deep, and stout.



Maternal brothers to Lot 102.



Lot:
102 Mc Cumber 4X13 EXTRA 8010

Calved 2/7/2008 Reg. # 16102141

N Bar Emulation EXT
Sinclair Extra 4X13
N Bar Lady Ida S C C 2P37

Emulation N Bar 5522
N Bar Primrose 2424
N Bar Prime Time D806
N Bar Lady Ida F1080
Mc Cumber 124 Traveler 212
Miss Wix 235 of Mc Cumber
G D A R Gold Nugget 766
Rosetta 421 of Mc Cumber

Mc Cumber Foundation 701
Rosetta 162 of Mc Cumber
Rosetta 601 of Mc Cumber

Ind. Record	
BW	79
WW	700
205	636
WR	100
ADG	2.46
YW	1,015
365	1,030
YR	100
IMF	3.09/85
REA	10.4/93
FAT	0.23/100

EPDs										Dam's Prod.		
BW	WW	YW	Milk	SC	IMF	REA	Fat	\$W	\$B	BW	WW	YW
I+.5	I+34	I+66	I+23	I-.01	I+.26	I-.25	I+.034	25.78	14.22	4/101	4/100	4/103

Selling 2/3 interest and full possession- Recommended for use on heifers- This 4x13 son is stacked with outstanding cows behind him. His dam has been a no miss daughter of Mc Cumber Foundation 701. His pedigree is stacked with multiple generations of outstanding sires which include, EXT multiple times, 212, Bando 155, 054, Shoshone Viking, and 376. Calving ease, fleshing ability, and outstanding udders should be bred into this bull.

Lot:
103 Mc Cumber 4X13 EXTRA 8034

Calved 1/26/2008 Reg. # 16266340

N Bar Emulation EXT
Sinclair Extra 4X13
N Bar Lady Ida S C C 2P37

Emulation N Bar 5522
N Bar Primrose 2424
N Bar Prime Time D806
N Bar Lady Ida F1080
Sitz Traveler 8180
Boyd Forever Lady 8003
Mc Cumber 7111 Total Value
Gale 948 of Mc Cumber

S A V 8180 Traveler 004
Gale 678 of Mc Cumber
Gale 472 of Mc Cumber

Ind. Record	
BW	82
WW	592
205	637
WR	102
ADG	2.88
YW	1,032
365	1,098
YR	101
IMF	3.92/107
REA	10.4/93
FAT	0.27/123

EPDs										Dam's Prod.		
BW	WW	YW	Milk	SC	IMF	REA	Fat	\$W	\$B	BW	WW	YW
I+1.9	I+41	I+79	I+21		I+.41	I-.07	I+.053	24.53	32.19	1/101	1/96	1/97

Recommended for use on heifers- 8034 is a result of the mating that has worked so well for us. He is a 4x13 out of a 004 daughter that is moderate framed, sound structured, and excellent uddered. He earned a 365 day weight of nearly 1100 lbs. and scanned an IMF of 3.92 to ratio 107.



Maternal brother to Lot 103.



Flush sister to dam.

Lot: **104** Mc Cumber 004 Traveler 8131

Calved 2/8/2008 Reg. # 16102179

Sitz Traveler 8180
S A V 8180 Traveler 004
Boyd Forever Lady 8003

Leachman Right Time
Lassie 2158 of Mc Cumber
Lassie 272 of Mc Cumber

G D A R Traveler 71
Sitz Everelda Entense 1137
A A R New Trend
S V F Forever Lady 57D
N Bar Emulation EXT
Leachman Erica 0025
A A R New Trend
Lassie 252 of Mc Cumber

Ind. Record	
BW	96
WW	678
205	620
WR	89
ADG	2.95
YW	1,056
365	1,092
YR	92
IMF	3.23/87
REA	11.3/97
FAT	0.2/83

EPDs											Dam's Prod.		
BW	WW	YW	Milk	SC	IMF	REA	Fat	\$W	\$B		BW	WW	YW
4.1	42	1+80	19	1+.77	1+.08	1-.11	1+.045	19.1	19.33	5/98	5/92	5/96	

8131 is one of only a handful of direct 004 sons in the sale. This big scrotaled, long bodied, super sound son of 004 is out of one of the easiest fleshing cows on the Ranch. Lassie 2158 is a big bodied, stout made daughter of Right Time with a perfect udder. She descends from a line of cows that have been extremely productive and fertile.

Lot: **105** Mc Cumber 536P Ext 8204

Calved 3/6/2008 Reg. # 16102247

N Bar Emulation EXT
Sitz JLS Emulation Ext 536P
Ideal 4465 of 6807 4286

BT Right Time 24J
Miss Wix 5150 of Mc Cumber
Miss Wix 101 of Mc Cumber

Emulation N Bar 5522
N Bar Primrose 2424
D H D Traveler 6807
E E 4286 of Ideal 2240 1254
Leachman Right Time
Sitz Everelda Entense 1905
Mc Cumber Ferdinand 896
Miss Wix 7009 of Mc Cumber

Ind. Record	
BW	98
WW	622
205	655
WR	94
ADG	3.03
YW	1,010
365	1,140
YR	96
IMF	3.41/92
REA	12.8/109
FAT	0.26/108

EPDs											Dam's Prod.		
BW	WW	YW	Milk	SC	IMF	REA	Fat	\$W	\$B		BW	WW	YW
4.9	38	1+69	20		1+.08	1+.20	1+.015	18.52	22.77	2/104	2/95	2/99	

Moderate framed, heavy muscled and stout best describe this son of 536P. 8204 puts a foot down in all four corners, and is a thick meaty rumped bull. He scanned an excellent REA of 12.8 to ratio 109, and has a REA/CWT of 1.20. His dam is a stout made, good uddered daughter of BT Right Time 24J, and has produced one daughter that sold to C.S. Fitzgerald in VA. The 536P sons are truly cut from the same mold and this bull is no exception.

Lot: **106** Mc Cumber 383 Tradition 846

Calved 1/25/2008 Reg. # 16102291

Leachman Right Time
Mc Cumber Tradition 383
Lassie 7015 of Mc Cumber

Circle Oak Lucys Boy 625
Erianna 825 of Mc Cumber
Erianna 6148 of Mc Cumber

N Bar Emulation EXT
Leachman Erica 0025
Mc Cumber 124 Traveler 212
Lassie 648 of Mc Cumber
V D A R Lucys Boy
Homestretch Miss Wix 299
Mc Cumber 054 Rito 326
Erianna 278 of Mc Cumber

Ind. Record	
BW	93
WW	734
205	660
WR	94
ADG	2.78
YW	1,090
365	1,105
YR	93
IMF	3/81
REA	11.5/98
FAT	0.23/96

EPDs											Dam's Prod.		
BW	WW	YW	Milk	SC	IMF	REA	Fat	\$W	\$B		BW	WW	YW
3.5	24	1+52	19	1+.60	1+.05	1-.13	1+.024	15.75	5.22	9/93	9/96	7/96	

This 700 lb weaning weight bull is moderate, correct on his feet and legs, and deep from fore rib to flank. Mc Cumber Tradition 383 is siring outstanding perfect uddered females and I would expect this son to do the same.



Sire of Lot 107

Lot: **107** Mc Cumber 536P Ext 8207

Calved 3/8/2008 Reg. # 16102250

N Bar Emulation EXT
Sitz JLS Emulation Ext 536P
Ideal 4465 of 6807 4286

Mc Cumber Next Step 9012
Rosetta 102 of Mc Cumber
Rosetta 9003 of Mc Cumber

Emulation N Bar 5522
N Bar Primrose 2424
D H D Traveler 6807
E E 4286 of Ideal 2240 1254
Mc Cumber Foundation 701
Gale 607 of Mc Cumber
R R Scotchcap 9440
Rosetta 405 of Mc Cumber

Ind. Record	
BW	89
WW	658
205	652
WR	93
ADG	2.75
YW	1,010
365	1,092
YR	92
IMF	3.46/93
REA	10.6/91
FAT	0.28/117

EPDs											Dam's Prod.		
BW	WW	YW	Milk	SC	IMF	REA	Fat	\$W	\$B		BW	WW	YW
2.4	27	1+50	22	1-.74	1+.12	1-.15	1+.039	21.77	9.18	5/90	5/95	5/95	

8207 is an extremely attractive son of 536P. He is stout made, thick topped, and stands down square and wide on his feet and legs. He is fluid in his movement and possesses a masculine beef bull look. We consider his dam to be perfect on her feet with a well shaped foot and plenty heel.



Maternal brother to dam of Lot 108.

Lot: **108** Mc Cumber 4X13 Extra 8043

Calved	Reg. #	Ind. Record	
2/1/2008	16266348	BW	78
		WW	580
		205	634
		WR	101
		ADG	2.84
		YW	1,014
		365	1,088
		YR	99
		IMF	3.74/102
		REA	10.3/92
		FAT	0.2/91

N Bar Emulation EXT	Emulation N Bar 5522
Sinclair Extra 4X13	N Bar Primrose 2424
N Bar Lady Ida S C C 2P37	N Bar Prime Time D806
	N Bar Lady Ida F1080
Mc Cumber Total Value 449	Mc Cumber 7111 Total Value
Miss Wix 6106 of Mc Cumber	Miss Wix 7007 of Mc Cumber
Miss Wix 301 of Mc Cumber	Leachman Right Time
	Miss Wix 1119 of Mc Cumber

EPDs										Dam's Prod.		
BW	WW	YW	Milk	SC	IMF	REA	Fat	\$W	\$B	BW	WW	YW
I-.4	I+38	I+71	I+22		I+.31	I-.13	I+.031	27.77	27.63	1/96	1/95	1/96

Recommended for use on heifers- 8043 is a super stylish, free moving son of 4x13. His dam is a maternal sister to the 2006 High selling bull Mc Cumber 004 Traveler 513. His dam is moderate framed, deep bodied, and has an excellent udder.

Lot: **109** Mc Cumber 6PV20 Value 8181

Calved	Reg. #	Ind. Record	
2/25/2008	16102223	BW	78
		WW	620
		205	671
		WR	96
		ADG	3.28
		YW	1,040
		365	1,196
		YR	101
		IMF	4.12/111
		REA	12.5/107
		FAT	0.26/108

Sinclair Net Present Value	N Bar Prime Time D806
Sinclair True Value 6PV20	Ideal 4465 of 6807 4286
N Bar Miss Emulous A404	N Bar Emulation Ext Z52
	N Bar Miss Emulous X3091
Boyd New Day 8005	A A R New Trend
Enchantress 635 of Mc Cumber	S V F Forever Lady 57D
Enchantress 286 of Mc Cumber	Mc Cumber Mr Wix 7104
	Enchantress 086 of Mc Cumber

EPDs										Dam's Prod.		
BW	WW	YW	Milk	SC	IMF	REA	Fat	\$W	\$B	BW	WW	YW
0.4	35	I+75	25		I+.45	I+.07	I+.048	24.03	37	1/93	1/96	1/101

Recommended for use on heifers- This unique pedigreed, moderate framed, heavy muscled, stout made bull performed well across the board. He had a gain ratio of 107 on a 42 mega cal ration and earned a 365 day weight of nearly 1200 lbs. Along with this he scanned outstanding with an IMF of 4.12, and a REA of 12.5 to ratio 111 and 107 respectively. 8181 is a dense muscled bull with more power and stoutness than you would expect from a calving ease bull. His dam is a moderate, easy fleshing, perfect uddered daughter of Boyd New Day and is currently nursing a phenomenal heifer calf by 4x13.



Maternal brother to grand dam.

Lot: **110** Mc Cumber 536P Ext 8198

Calved	Reg. #	Ind. Record	
3/4/2008	16102240	BW	97
		WW	674
		205	702
		WR	100
		ADG	3.02
		YW	1,060
		365	1,185
		YR	99
		IMF	4.54/122
		REA	12.7/109
		FAT	0.27/113

N Bar Emulation EXT	Emulation N Bar 5522
Sitz JLS Emulation Ext 536P	N Bar Primrose 2424
Ideal 4465 of 6807 4286	D H D Traveler 6807
	E E 4286 of Ideal 2240 1254
Vermilion Dateline 7078	Connealy Dateline
Miss Wix 5018 of Mc Cumber	Vermilion Blackbird 5044
Miss Wix 9007 of Mc Cumber	Tehama Bando 155
	Miss Wix 365 of Mc Cumber

EPDs										Dam's Prod.		
BW	WW	YW	Milk	SC	IMF	REA	Fat	\$W	\$B	BW	WW	YW
4.8	42	I+75	22		I+.23	I+.21	I+.011	20.24	34.6	2/106	2/97	2/99

You won't want to forget about this stout, heavy muscled, moderate framed son of 536P. He earned a 205 day weight of 702 lbs. to ratio 100, and scanned superbly with an IMF of 4.54 to ratio 122 and a REA of 12.7 to ratio 109. His dam is a heavy muscled, deep bodied, easy fleshing member of the Miss Wix cow family.

Notes: _____

Representing 44 years of breeding Angus cattle.

Mc Cumber Angus Ranch

“Cow herd known for outstanding maternal traits”



Sinclair Extra 4X13 reg no. 14774030
The most consistent sire of both bulls and females we have used.

Annual Bull Sale :
March 30, 2009
at the ranch 1:30 CST
Selling 110 yearling
Angus Bulls

Free 1000 miles delivery
Ave. 205 day wt 701 lbs
No creep feed
Ave 365 day wt. 1200 lbs
High Roughage Ration
Many suitable for use on
heifers.

Sale will be broadcast by
Superior Livestock Pro-
ductions on RFD-TV.



Mc Cumber 004 Traveler 6120 reg no. 15428743
Sires depth, performance and muscle. First sons sell on
March 30.



Sitz JLS Emulation EXT 536P reg no. 14809623
Ext out of a 6807. Sons are long, deep and muscular. First
daughter have perfect udders with depth and femininity.

The Mc Cumber cattle are moder-
ate framed, high volume ani-
mals that possess the ability to
flesh easily on pasture and high
roughage rations. This is a very
economically important trait in
today's cattle business when
considering the high cost of
grain supplementation.
Let “Mc Cumber” bulls help
you enter the next era of effi-
cient livestock production.



Mc Cumber Tradition 383 reg no 14667477
Right Time out of a Traveler 212. Moderate, deep
and thick. Daughters have perfect udders



LT Timberwolf 5014 reg no 15147477
Outstanding sire of performance and muscle. His sons
are powerful.

Sample of the bulls selling on
March 30, 2009



“Right Time” reg no 11750711
Many sons out of our very best females.

Please contact us to receive our
Newsletters or **Bull Sale Catalog.**

Mc Cumber Angus Ranch

8675 37th Ave, Rolette, ND 58366
Chuck: 701/246-3366 or Matt: 701/246-3847
Email: mccumber @utma.com,
Web site: mccumberangus.com

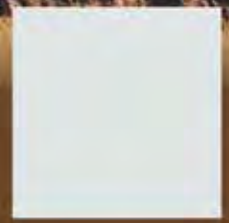
Like Father, Like Son







McCumber
Angus
Ranch 

Dated Material: Please deliver by March 17.



**Top Row:
 Lots 1 and 4**

**Bottom Row:
 Lots 5 and 54**

