



Lot 75

**Mc Cumber 004
Traveler 6120**

**Selling 114 Bulls
March 30, 2007**

At the Ranch, Rolette, ND
Sale Time: 1:00 p.m.

McCumber
Angus
Ranich



The Cow Herd Known for Outstanding Maternal Traits

Chuck and Gail Tastad
 Phone/fax 701/246-3366
 Email: mccumber@utma.com
 Web site:
 www.mccumberangus.com

McCumber *Angus* Ranch

RR 1 Box 128 Rolette, North Dakota 58366

*Matt, Cynthia,
 Sydney, Eva, Nate & Brett Tastad*
 Phone/fax 701/246-3847
 Web site:
 www.mccumberangus.com

Dear Valued Customers and Cattle Men and Women,

It is with great pleasure and appreciation that we welcome you to our annual bull sale. This year represents 43 continuous years of breeding Registered Angus cattle with a focus on producing balanced trait cattle that will be profitable for cow/calf producers. We want to thank you for your generous support of our program, and look forward to providing you with profitable seedstock now, and into the future.

We are very proud of this year's offering. They are a uniform set of bulls with bred in performance, carcass, and the ability to sire commercial oriented replacement females. The bulls are moderate framed, heavy muscled, deep bodied beef bulls. They are structurally sound, and have been developed with you in mind. Although the bulls weaned off a little lighter due to drought and early weaning, they have developed into a top set of bulls ready to go to work for you. The bulls are designed to work under any management or environmental situation, and are produced from females that are stacked with multiple generations of highly fertile, easy fleshing, moderate framed cows with the ability to raise big calves year after year.

Last year at this time I was writing about how exciting it was to be in the beef cattle business, with record prices, and high demand for replacement females. Well, this fall and winter has been a bit challenging with roller coaster prices, high feed costs, big snow storms, and bitterly cold temperatures. However, it is still exciting to be in the beef cattle business, otherwise we would find another industry to be a part of. With the arrival of the new calves this spring we evaluate the genetics that produced the calf crop and make decisions on the genetics that will influence our herd for many years to come. High quality cattle always top the market, and reputation females are always in high demand, this is never more evident than in a time when prices are unstable. This is the reason it is important to select cattle that will add to your bottom line. **PROFIT=PRODUCTION-COSTS.** In the real world, it is the cow herd that has the job of getting the bills paid. This is why we avoid fads, and extreme outliers, and continue to focus on stacking generations of outstanding females into our cattle. As you look through the catalog you will notice many bulls produced by females with generations of highly fertile, top producing cows behind them. These females are **low maintenance, problem free females with enough milk to produce a big bloomy calf, and the fertility to breed back quickly without excess feed.** Our cow herd has been selected for traits beyond the numbers. They are bred not only to have enough performance and carcass to be profitable, but have the bred in ability to pass on the **convenience traits of mothering ability, outstanding udder quality, sound feet and legs, a gentle disposition, and the number one most important key to profit, FERTILITY.** The bulls in this offering are bred to produce **PREDICTABLE, PROFITABLE,** commercial oriented cattle that will help add to your bottom line.

There are several herd sire prospects selling, but we would like to bring to your attention 6120. He is one of the best bulls we have produced. His combination of muscle, massive volume, excellent structure, and outstanding performance on a moderate frame make him one of the top bulls to sell this year. His dam typifies the type of cow we talked about in the above comments.

In order to ensure the health of our herd as well as our customers we participated in the Johnnes Eradication program through the state of North Dakota. In the two years of testing the entire cowherd, we have not had a positive test returned.

For your convenience the sale will be broadcast by Superior Productions on RFD-TV. The cattle will be videoed prior to the sale, and a DVD of VHS tape will be available for viewing. You can either contact Superior or me and we would be happy to send a copy to you.

As always, ALL the performance, and ultrasound data has been included in the catalog, and if there is some other information you would like we would be happy to provide you with it. The bulls have passed a breeding soundness exam and fertility test. They are guaranteed to be breeders and we stand behind them 100%. If you have any questions or problems, be sure to let us know.

If we can be of any assistance, please do not hesitate to call either Dad or me.

- Matt & Chuck Tastad



CONTACT McCUMBER

Chuck & Gail Tastad 701.246.3366
Matt, Cynthia,
Sydney, Eva, Nate & Brett Tastad 701.246.3847

RR 1 Box 128 Rolette, ND 58366

E-mail: mccumber@utma.com

Web site: www.mccumberangus.com

1 mile west and 1/4 mile south of Rolette, North Dakota



SALE DAY TELEPHONES

701.246.3366

701.871.9800

701.871.1072

**Watch the Sale Live -
 In Person, Online or
 On Television!**



You Can Participate as an Absentee Buyer!

We prefer for each of you to be in attendance on sale day. Realistically, we know there will be some scheduling conflicts and distance limitations. In these cases, we have arranged for you to be able to participate in the sale on an absentee basis.

If possible, you can come by and evaluate the animals prior to sale day. If distance is a problem, we can also provide you with a DVD of all the cattle for home viewing. All of the lots in the sale will be available for viewing online prior to sale day at www.superiorlivestock.com as well.

Customers tell us that the video does a good job of showing conformation, structural correctness, and how the cattle travel, etc. Our sale book, with complete data on each animal, is very helpful. Please feel free to call us with questions. In addition, there will be qualified persons on hand sale day to evaluate the bulls and answer any questions you might have.

Here's How It Works!

Please call Superior Productions at 800-431-4452 and pre-register for your buyer's number. At that time they will give you the bid line number that you will use on sale day to place bids over the phone.

The sale will be broadcast via satellite on RFD-TV - Dish Network channel 9409 and DirecTV channel 379. Also, Superior Productions now offers the convenience of participating on sale day by following the auction on the internet at www.superiorlivestock.com. Regardless of internet connection, you will be able to view the same video feed as seen on the satellite.

The bidding process is the same - follow the auction on the internet and call the bid line number to place your bids. Bidders who are successful in making purchases via satellite or internet will be contacted by McCumber Angus Ranch after the sale to settle payment and shipping arrangements.



SALE PERSONNEL

Auctioneer:

Roger Jacobs 406.698-7685
 Box 270, Shepherd, MT 59079

Sale Consultants:

Jim O'Neill 712.644.2062
 Cell 402.680.3171
Casey St. Blanc 985.789.2110
 Home 985.796.0607
Ken Brubaker 540.908.5799

Special Representatives:

Very Frey, Angus Journal 701.537.5383
 Cell 701.721.0344
Terry Robinson, Farm and Ranch Guide 701.255.3037
Kirby Goettsch, Western Livestock Reporter 605.380.3939
Scott Dirk, Tri-State Neighbor 605/335-7300

*Buyers unable to attend the sale may send bids to
 McCumber Angus Ranch, Sale Consultants or Representatives.*



SALE TERMS & CONDITIONS

All cattle sell under the standard terms and conditions of the American Angus Association. Terms of the sale are cash.

Volume Discounts:

We will discount your purchase price 3% on 3 head purchased by one buyer and up to 10% on 10 head purchased by one buyer.

Delivery:

We offer free delivery in North Dakota and adjacent states. All cattle will be cared for until delivery arrangements can be made.

Sight Unseen Purchase Program:

If you cannot attend the sale and would like to purchase bulls, please give us a call and we'll be glad to help you with your order. Describe the type of bull, minimum and maximum parameters and price range. We want to assure you that your bid will be handled with the utmost professionalism and your money handled like it is our own. We guarantee 100% satisfaction on all orders. If you get the bull and don't like him, we will take him back.

Affordability:

McCumber bulls are affordable. Here is a breakdown of the last three bull sales:

47% have sold for less than \$2,000

69% have sold for less than \$2,500

83% have sold for less than \$3000



LODGING & TRANSPORTATION

Rolette Motel, Rolette ND 701.246.3733
Sky Dancer Hotel & Casino, Belcourt ND 701.244.2400
Econo Lodge, Rugby ND 701.776.5776
Hub Motel, Rugby ND 701.776.5833
 Multiple locations in Minot ND

Rolette ND has a 3,500 foot paved runway. Minot, ND is served by Northwest Airlines. Minot is 90 miles from the ranch.

Join us for lunch on sale day!



HERD HEALTH & NUTRITION

Herd Health:

The Mc Cumber herd is in excellent health, and all cattle sell with interstate health papers. Bulls have been vaccinated with Bovishield Gold 4, 7-way, Ivomec and have had a complete fertility test

Nutrition:

The bulls were fed a high roughage ration which for the first time included peas. The peas allowed us to decrease the level of starch in the diet. We reached a maximum of 48 mcal, and had the protein at 15%. The bulls performed superbly and were developed in a way to ensure their soundness and longevity. Once again the calves received a highly medicated creep while the cows were dry lotted, prior to going to pasture. This has help with the control of pneumonia. Once the cattle are on grass, the cows and calves do not receive any supplemental feed, except for mineral and salt.



SEMEN INTEREST

You will notice that we are retaining an interest in quite a few of the bulls. These are bulls we may want to collect semen from in the future for use within our herd. If we are able to sell semen from your bull, we would share with you any revenue generated from the sale of semen. The bulls would be collected when it was convenient for you. The buyer has full possession and salvage value of the bull. Many of these bulls will undoubtedly sell in the price range of the commercial man.



MARKETING

If you have calves sired by our bulls, or females bred to our bulls, we would like to help you market them. We, along with the Spickler Ranch, sponsored the 1st Annual Angus Partners commercial female sale in Mandan. The consignors realized a considerable premium over the current market for their Mc Cumber and Spickler sired replacement open and bred females. We are planning to continue with this sale and would be happy to accept your consignment at any time. I would also suggest checking out the Angus Source program. This is a very effective way to set apart your Angus sired feeder cattle, and replacement females.

Chuck Tostad Family
RR 1, Box 126 • Rolla, ND 58366
Chuck (701) 246-3366
Matt (701) 246-3847
E-mail: mccumber@utma.com
Web site: mccumberangus.com

Mc Cumber Angus Ranch won third place in the 2006 NDAA Carcass Challenge. Mc Cumber Angus Ranch has always selected sires from outstanding dams that will produce daughters like their mothers. Mc Cumber Angus Ranch can be your source for efficient, problem free cattle, while still producing an acceptable end product.

2007 Mc Cumber Angus Ranch Reference Sires

Mc CUMBER 7111 TOTAL VALUE 209

Calved: 01/20/2002

Reg. No. 14201122

Connealy Dateline
Vermilion Dateline 7078
Vermilion Blackbird 5044

G D A R Traveler 71
Miss Wix 7111 of Mc Cumber
Miss Wix 365 of Mc Cumber

D H D Traveler 6807
Eila Eila of Conanga
Leachman Right Time
Vermilion Blackbird 3525
Traveler 1148 G D A R
G D A R Miss Blackcap 567
Shoshone 247 P J M
Miss Wix 294 of Mc Cumber

Individual Record			
BW	88		
WW	865		
205	726		
WR	110		
ADG	4.02		
YW	1400		
365	1369		
YR	111		
Ultrasound Data			
IMF	19.00		
REA	11.77		
Fat	30.19		

EPDs										Dam's Production		
BW	WW	Milk	YW	SC	IMF	REA	Fat			BW	WW	YW
3.5	46	32	76	.46	.07	.41	.019					

- Dam is the outstanding Miss Wix 7111 of Mc Cumber
- Consistently sires moderate framed, thick made bulls with depth, and sound feet and legs.
- Daughters are moderate framed, good uddered, and top producing females with 15 daughters in production ratioing 105
- His maternal sisters have topped our last two cow sales
- He has excellent ultrasound data as well %IMF 95@101, REA 95@101
- He has been successfully used on heifers
- Owned with Marcy Cattle Co. NE, and Nielson Angus NE.
- Semen available



Mc Cumber 7111 Total Value 209



McCUMBER TRADITION 383

Calved: 02/11/2003

Reg. No. 14667477

N Bar Emulation EXT
Leachman Right Time
Leachman Erica 0025

Mc Cumber 124 Traveler 212
Lassie 7015 of Mc Cumber
Lassie 648 of Mc Cumber

EMulation N Bar 5522
N bar Primrose 2424
Tehama Bando 155
Leachman Erica 8058
Traveler 124 G D A R
Miss Wix 365 of Mc Cumber
Rito 2100 G D A R
Lassie 252 of Mc Cumber

Individual Record	
BW	
WW	
205	
WR	
ADG	
YW	
365	
YR	
Ultrasound Data	
IMF	
REA	
Fat	

EPDs								Dam's Production		
BW	WW	Milk	YW	SC	IMF	REA	Fat	BW	WW	YW
4.0	36	21	76	.47	.03	.15	.036			

- An outstanding son of Right Time that we chose to carry on the Right Time influence in our herd
- His dam is a member of the herd bull producing Lassie of Mc Cumber cow family
- He sires moderate framed, heavy muscled bulls with excellent foot and leg structure
- His first daughters in production are easy fleshing, and excellent uddered
- He is an udder improver
- WWR 44@100, YWR 34@101, %IMF 22@102, REA 22@100
- Owned with Heritage Angus Farm, Ed and Lori Williams MS
- Semen available



McCumber Tradition 383



SAV 8180 Traveler 004

Calved: 01/01/2000

Reg. No. 13512009

G D A R Traveler 71
Sitz Traveler 8180
Sitz Everelda Entense 1137

A A R New Trend
Boyd Forever Lady 8003
S V F Forever Lady 57D

Traveler 1148 G D A R
G D A R Miss Blackcap 567
G D A R Rainmaker 340
Sitz Everelda Entense 2335
V D A R Shoshone 548
Donna A A R 74
Leachman Right Time
S V F Forever Lady 1128

Individual Record	
BW	
WW	
205	
WR	
ADG	
YW	
365	
YR	
Ultrasound Data	
IMF	
REA	
Fat	

EPDs								Dam's Production		
BW	WW	Milk	YW	SC	IMF	REA	Fat	BW	WW	YW
3.4	59	26	107	.92	-.09	.40	.012			

- Sires high performance cattle that have a desirable growth curve
- First daughters in production here are moderate, easy fleshing females with excellent udders
- His sons have been very popular



SAV 8180 Traveler 004



Sinclair Extra 4X13

Calved: 02/07/2004

Reg. No. 14774030

Emulation N Bar 5522
N Bar Emulation EXT
N Bar Primrose 2424

N Bar Prime Time D806
N Bar Lady Ida S C C 2P37
N Bar Lady Ida F1080

Emulation 31
Ankony 8F78 Lass 8F275
Emulation 31
Primrose N Bar 9962
Gardens Prime Time
N Bar Miss Emulous A404
N Bar Shadow X4124
N bar Lady Ida D1986

Individual Record	
BW	
WW	
205	
WR	
ADG	
YW	
365	
YR	
Ultrasound Data	
IMF	
REA	
Fat	

EPDs								Dam's Production		
BW	WW	Milk	YW	SC	IMF	REA	Fat	BW	WW	YW
-1.0	42	21	80	-.41	.43	.20	.040			

- He has exceeded our expectations
- Sure-fire heifer bull, his calves have excellent vigor and are up and nursing in no time
- He sires moderate framed cattle with depth, muscle, length, and a near flawless structure.
- We expect his daughters to be easy fleshing, perfect uddered, and moderate framed.
- His first daughter to be offered at auction sold for \$5250
- His first ultrasound data is fabulous
- %IMF 7@121, REA 7@102 – He sired both the 3rd high IMF, and 3rd high REA bulls in the contemporary group
- He also has a BWR 20@95, WWR 21@102, and YWR 6@102
- Owned with Sinclair Cattle Co. PA, N-Bar Land and Cattle MT, Lewis Hagen MT, and Genex Cooperative, Inc. WI
- Semen available through Genex Cooperative, Inc.



Sinclair Extra 4X13



Mc Cumber Total Value 449

Calved: 02/01/2004

Reg. No. 14798068

Vermilion Dateline 7078
Mc Cumber 7111 Total Value
Miss Wix 7111 of Mc Cumber

Mc Cumber 124 Traveler 212
Miss Wix 7007 of Mc Cumber
Miss Wix 030 of Mc Cumber

Connealy Dateline
Vermilion Blackbird 5044
G D A R Traveler 71
Miss Wix 365 of Mc Cumber
Traveler 124 G D A R
Miss Wix 365 of Mc Cumber
Rito 054 G D A R
Miss Wix 235 of Mc Cumber

Individual Record	
BW	
WW	
205	
WR	
ADG	
YW	
365	
YR	
Ultrasound Data	
IMF	
REA	
Fat	

EPDs								Dam's Production		
BW	WW	Milk	YW	SC	IMF	REA	Fat	BW	WW	YW
-.6	31	31	59	.56	.05	.28	.038			

- 449 has been used successfully on heifers
- He consistently sires moderate framed, thick made cattle with depth, and an excellent structure
- He was our 2nd High selling bull in our 2005 bull sale
- He combines both branches of the Miss Wix cow family, which are Miss Wix 365 of Mc Cumber and Miss Wix 235 of Mc Cumber Angus Ranch
- Owned with Diamond W Angus Ranch TX.
- Semen Available



Mc Cumber Total Value 449



Mc Cumber 7078 VRD 3116

Calved: 02/18/2003

Reg. No. 14443308

Connealy Dateline
Vermilion Dateline 7078
Vermilion Blackbird 5044

Circle Oak Lucys Boy 625
Gale 836 of Mc Cumber
Gale 6129 of Mc Cumber

D H D traveler 6807
Eila Eila of Conanga
Leachman Right Time
Vermilion Blackbird 3525
V D A R Lucys Boy
Homestretch Miss Wix 299
Mc Cumber 054 Rito 326
Gale 413 of Mc Cumber

Individual Record						
BW	WW	205	WR	ADG	YW	365
6.4	58	23	100	1.04	.21	.31
REA	Fat					

EPDs						
BW	WW	Milk	YW	SC	IMF	REA
6.4	58	23	100	1.04	.21	.31
Fat						

- 3116 sires cattle very similar to VRD, except with a reduced mature size
- His sons are consistently thick made, deep bodied bulls with excellent scrotal development
- His first daughters in production are big ribbed, thick made females, with tremendous udder structure
- He sires excellent performance with considerable more marbling than his sire or many of VRD's sons
- WWR 87@103
- YWR 44@103
- %IMF 23@106
- REA 23@100
- Owned with Sweiger Brothers MO, and Hunt Tainter MO
- Semen Available



Mc Cumber 7078 VRD 3116



Mc Cumber 7078 VRD 3108

Calved: 02/16/2003

Reg. No. 14443306

Connealy Dateline
Vermilion Dateline 7078
Vermilion Blackbird 5044

Mc Cumber Foundation 701
Lassie 974 of Mc Cumber
Lassie 272 of Mc Cumber

D H D traveler 6807
Eila Eila of Conanga
Leachman Right Time
Vermilion Blackbird 3525
Mc Cumber 124 Traveler 212
Miss Wix 235 of Mc Cumber
A A R New Trend
Lassie 252 of Mc Cumber

Individual Record						
BW	WW	205	WR	ADG	YW	365
6.2	35	22	81	.27	-.15	.61
REA	Fat					

EPDs						
BW	WW	Milk	YW	SC	IMF	REA
6.2	35	22	81	.27	-.15	.61
Fat						

- 3108 sons have tremendous muscle definition down their tops and out into their hind end
- His dam is Lassie 974 of Mc Cumber, who was the popular cover cow on our 2006 cow sale catalog, and was the high selling mature cow to Haywood Farms in IA
- His sons will sire those "in demand" feeder cattle and high quality replacement females



Mc Cumber 7078 VRD 3108



Sitz Triangle S Valubull

Calved: 02/09/2002

Reg. No. 14087776

Sitz Traveler 6802
Sitz Value 7097
Sitz Eisa evergreen 791

D H D Traveler 6807
Sitz Barabaramere Nell 1590
Sitz Barabaramere Nell 2124

Sitz Traveler 9929
Sitz Barabaramere Nelle 2988
G D A R Rainmaker 340
Sitz Eisa Evergreen 1659
Q A S Traveler 23-4
Bemindful Maid D H D 0807
Sitz Traveler 8542
Sitz Barabaramere Nel 2812

Individual Record						
BW	WW	205	WR	ADG	YW	365

EPDs						
BW	WW	Milk	YW	SC	IMF	REA
-1.5	43	16	78	.02	.05	.01
Fat						

Dam's Production						
BW	WW	YW				

- Top selling heifer bull in the 2003 Sitz Fall bull sale
- His sons are sure-fire heifer bulls with above average performance, and excellent %IMF
- His dam has been a top producer for Sitz's



Sitz Triangle S Valubull 9802



Sitz Tradition RLS 8702

Calved: 02/12/2002

Reg. No. 14093248

Connealy Dateline
Vermilion Dateline 7078
Vermilion Blackbird 5044

Sitz Alliance 6595
R L S Eisa Evergreen 5018
R L S Eisa Evergreen 1078

D H D traveler 6807
Eila Eila of Conanga
Leachman Right Time
Vermilion Blackbird 3525
Sitz Traveler 8180
Sitz Barabaramere Jet 2698
Rito 054 G D a R
R L S Eisa evergreen 2613

Individual Record						
BW	WW	205	WR	ADG	YW	365

EPDs						
BW	WW	Milk	YW	SC	IMF	REA
5.0	63	19	104	1.03	-.04	.72
Fat						

Dam's Production						
BW	WW	YW				

- A popular son of VRD used across the country
- He descends from a long line of top producers in the Sitz cow herd



Mc Cumber New Trend 1206

Calved: 09/24/2001

Reg. No. 14201196

V D A R Shoshone 548
A A R New Trend
Donna A A R 74

Mc Cumber 124 Traveler 212
Miss Wix 705 of Mc Cumber
Miss Wix 245 of Mc Cumber

Schearbrook Shoshone
V D A R Polly 308
Candolier Forever 376
Donna 244 G D A R
Traveler 124 G D A R
Miss Wix 365 of Mc Cumber
Shoshone Viking GD60
Miss Wix 117 of Mc Cumber

Individual Record						
BW	WW	205	WR	ADG	YW	365

EPDs						
BW	WW	Milk	YW	SC	IMF	REA
5.7	6	27	16	1.48	-.03	.35
Fat						

Dam's Production						
BW	WW	YW				

- Sires high performance cattle that have a desirable growth curve
- First daughters in production here are moderate, easy fleshing females with excellent udders
- His sons have been very popular



Miss Wix 705 of Mc Cumber

Dam of Mc Cumber New Trend 1206

Sale Offering Begins Here



Mc CUMBER 9802 VALUBULL 601

Calved: 1/7/2006

Reg. No. 15429661

Sitz Value 7097
Sitz Triangle S Valubull
Sitz Barbaramere Nell 1590

Sitz Traveler 6802
Sitz Eisa Evergreen 791
D H D Traveler 6807
Sitz Barbaramere Nell 2124
A A R New Trend
S V F Forever Lady 57D
Mc Cumber Next Step 9012
Rosetta 9003 of Mc Cumber

Boyd New Day 8005
Rosetta 437 of Mc Cumber
Rosetta 102 of Mc Cumber

Individual Record	
BW	82
WW	648
205	649
WR	100
ADG	3.03
YW	1094
365	1134
YR	93

Ultrasound Data	
IMF	4.55/117
REA	11.7/91
Fat	0.3/91

EPDs								Dam's Production		
BW	WW	Milk	YW	SC	IMF	REA	Fat	BW	WW	YW
0.5	39	20	71		.09	.04	.009	1/96	1/100	1/93

Recommended for use on heifers-This moderate framed, thick-made bull should not only be an excellent heifer bull prospect, but his design would suggest that he would work under any environment. He is the first son of Sitz Triangle S Valubull, which is a new sire group for us. Valubull calved very easy and the calves performed very well at weaning and yearling. 601's dam is a beautiful, super uddered daughter of Boyd New Day who stems from several generations of light birth weight cows. His %IMF of 4.55 for a ratio of 117 puts him in the top end of his contemporary group.



Mc CUMBER 383 TRADITION 603

Calved: 1/13/2006

Reg. No. 15428722

Leachman Right Time
MC Cumber Tradition 383
Lassie 7015 of Mc Cumber

N Bar Emulation EXT
Leachman Erica 0025
Mc Cumber 124 Traveler 212
Lassie 648 of Mc Cumber
Tehama Band 207
G D A R Blackcap Lad 927
Mc Cumber 124 Traveler 212
Rosetta 812 of Mc Cumber

G D A R Band 477
Rosetta 849 of Mc Cumber
Rosetta 541 of Mc Cumber

Individual Record	
BW	94
WW	726
205	647
WR	99
ADG	3.55
YW	1248
365	1215
YR	100

Ultrasound Data	
IMF	4.05/104
REA	12.9/100
Fat	0.54/164

EPDs								Dam's Production		
BW	WW	Milk	YW	SC	IMF	REA	Fat	BW	WW	YW
4.7	35	23	70		-.08	.28	.046	6/105	6/105	6/104

Selling 2/3 interest and full possession-This big butted scamp will surely catch your eye. 603 is an extremely well made bull with extra shape to his top and rear quarter. He is very sound and puts a foot down in all four corners. His dam is a big bodied, easy fleshing cow with a WR of 6@105 and YR of 6@104. She has produced 3 sons which have sold through previous bull sales to Tony Lindseth IA and Scott Anderson ND. He is sired by Mc Cumber Tradition 383 who's first daughters in production look very good. They have excellent udders and are very easy fleshing.



Granddam of 603



Mc CUMBER 8702 DATELINE 604

Calved: 1/13/2006

Reg. No. 15431631

Vermilion Dateline 7078
Sitz Tradition RLS 8702
R L S Eisa Evergreen 5018

Circle Oak Lucys Boy 625
Erianna 825 of Mc Cumber
Erianna 6148 of Mc Cumber

Connealy Dateline
Vermilion Blackbird 5044
Sitz Alliance 6595
R L S Eisa Evergreen 1078
V D A R Lucys Boy
Homestretch Miss Wix 299
Mc Cumber 054 Rito 326
Erianna 278 of Mc Cumber

Individual Record	
BW	87
WW	726
205	646
WR	99
ADG	3.77
YW	1280
365	1249
YR	102

Ultrasound Data	
IMF	4.51/116
REA	12.1/94
Fat	0.42/127

EPDs								Dam's Production		
BW	WW	Milk	YW	SC	IMF	REA	Fat	BW	WW	YW
2.5	40	19	74		.07	.19	.026	7/92	7/96	5/97

Recommended for use on heifers- A smooth, long bodied son of Sitz Tradition that should work well on heifers. His dam has a BWR of 7@92 which should ensure his calving ease ability. She is also the granddam to the outstanding 004 son selling as lot 6031. 604 scanned very well for IMF with a 4.51/116.

ANGUS PARTNERS

commercial heifer sale

Sponsored by Mc Cumber Angus Ranch and Spickler Ranch

A sale for commercial heifer calves and bred heifers that are sired by or bred to Mc Cumber Angus Ranch or Spickler Ranch bulls.

Last year's sale, held in January, was successful in returning a considerable premium to the consignors of the outstanding females offered.

Contact us if you are interested in consigning to next year's sale.

Chuck & Gail Tostad (701) 246-3366
Nath & Cynthia Tostad (701) 246-3847
Web site: mccumberangus.com

Justin & Sarah Spickler (701) 674-3170
Nathan & Emily Spickler (701) 674-3169
www.spicklerangus.com



Mc CUMBER TOTAL VALUE 607

Calved: 1/15/2006

Reg. No. 15428724

Vermilion Dateline 7078
MC Cumber 7111 Total Value
Miss Wix 7111 of Mc Cumber

Connealy Dateline
Vermilion Blackbird 5044
G D A R Traveler 71
Miss Wix 365 of Mc Cumber

BT Dolan 74D
FV Holly 1428
Fairview Holly 6120

Leachman Right Time
Sitz Everelda Entense 1905
R A High Trend
Holly of Fairview 1149

Individual Record	
BW	82
WW	706
205	630
WR	97
ADG	3.67
YW	1246
365	1217
YR	100
Ultrasound Data	
IMF	5.98/154
REA	12.9/100
Fat	0.36/109

EPDs								Dam's Production		
BW	WW	Milk	YW	SC	IMF	REA	Fat	BW	WW	YW
1.8	38	28	65		.18	.46	.023	4/93	4/102	4/100

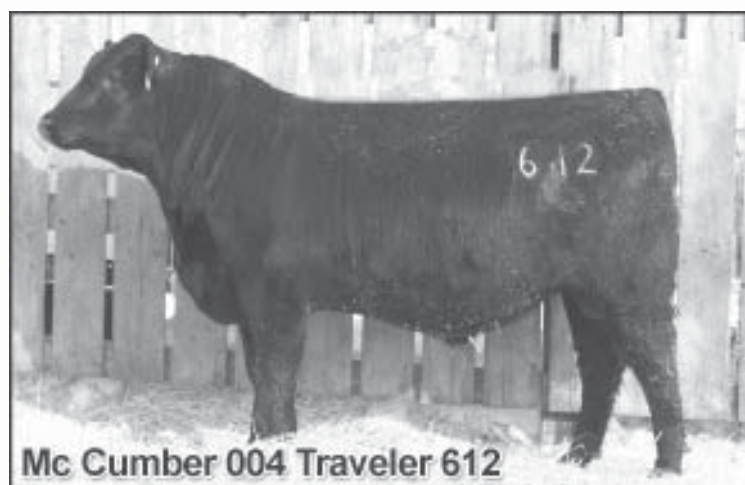
Selling 2/3 interest and full possession-Recommended for use on heifers- This son of Mc Cumber 7111 Total Value really puts a lot of things together. 607 is a moderate framed, high volume beef bull. He combines light birth weight, cow power and IMF into an attractive, easy fleshing package. 607 had the 2nd high %IMF of the group with a score of 5.98/154. His dam is one of the easiest fleshing cows on the place and has a near perfect udder. She has a BWR of 4@93, WWR 4@102 and YWR 4@100. She consistently raises good calves and has produced two bulls which have sold through our bull sale for an average of \$2500. The full sister to 607 had her first calf this spring and is moderate framed, easy fleshing, super sound and has an outstanding udder. One of the top calving ease prospects in the sale.



Mc Cumber Total Value 607



Mc Cumber 004 Traveler 614



Mc Cumber 004 Traveler 612



Mc CUMBER 004 TRAVELER 612

Calved: 1/17/2006

Reg. No. 15428742

Sitz Traveler 8180
S A V 8180 Traveler 004
Boyd Forever Lady 8003

G D A R Traveler 71
Sitz Everelda Entense 1137
A A R New Trend
S V F Forever Lady 57D
Vermilion Dateline 7078
Miss Wix 7111 of Mc Cumber
A A R New Trend 03
Lassie 462 of Mc Cumber

Individual Record	
BW	90
WW	734
205	738
WR	113
ADG	4.02
YW	1325
365	1381
YR	113
Ultrasound Data	
IMF	3.81/98
REA	14.1/109
Fat	0.4/121

EPDs								Dam's Production		
BW	WW	Milk	YW	SC	IMF	REA	Fat	BW	WW	YW
4.1	52	28	94		-.10	.56	.017	1/105	1/113	1/113

Selling 2/3 interest and full possession- This top performer will not disappoint. 612 had 205 day weight of 738 lbs. to ratio 113 as his dam's first calf. He gained 4.03 lbs./day and recorded a 365 day weight of 1381 lbs. to ratio 113. To go along with his performance 612 scanned an actual REA of 14.6. He ranks in the top 10% of non-parent bulls for WW EPD, YW EPD and REA EPD. **612 is a stout made bull with depth, muscle and eye appeal.** His dam is a member of the Lassie cow family and comes from a long line of top producers and cows that add REA.

Dam WWR 1@113 REA 1@109
GDam WWR 5@102 REA 3@1110
GGDam WWR 5@103 REA 4@111

His dam is a beautiful daughter of Mc Cumber 7111 Total Value and has a flawless udder. This is definitely a bull to find.



Mc CUMBER 004 TRAVELER 614

Calved: 1/17/2006

Reg. No. 15428757

Sitz Traveler 8180
S A V 8180 Traveler 004
Boyd Forever Lady 8003

G D A R Traveler 71
Sitz Everelda Entense 1137
A A R New Trend
S V F Forever Lady 57D
Connealy Dateline
Vermilion Blackbird 5044
Rito 054 G D A R
Miss Wix 756 of Mc Cumber

Individual Record	
BW	105
WW	846
205	802
WR	123
ADG	4.45
YW	1500
365	1514
YR	124
Ultrasound Data	
IMF	3.77/97
REA	13.3/103
Fat	0.4/121

EPDs								Dam's Production		
BW	WW	Milk	YW	SC	IMF	REA	Fat	BW	WW	YW
6.6	62	26	112		-.09	.34	.011	2/115	2/113	2/115

Selling 2/3 interest and full possession- This big, stout, scale crusher is the highest growth bull we have ever produced. He recorded a 205 day weight of 802 lbs. to ratio 123, gained nearly 4.50 lbs./day and weighed off test at 1500 lbs., with a 365 day weight of 1514 lbs. to ratio 124. **He is the heaviest bull we have ever weighed off test.** His weaning and yearling EPDs of 62 and 112 respectively, rank in the very top 1% of the breed. His dam is a highly productive, excellent uddered daughter of VRD. If you like em' big, you will want a doubt find this bull.



Miss Wix 5168 of Mc Cumber

Maternal Granddam of 614

Lot 7

Mc CUMBER 3116 VRD 623

Calved: 1/19/2006

Reg. No. 15428838

Vermilion Dateline 7078
Mc Cumber 7078 VRD 3116
Gale 836 of Mc Cumber

Connealy Dateline
Vermilion Blackbird 5044
Circle Oak Lucys Boy 625
Gale 6129 of Mc Cumber
Traveler 1148 G D A R
Miss Wix 5007 of Mc Cumber
Mc Cumber 6122 Equator 8113
B Pride 613 of Mc Cumber

Individual Record	
BW	89
WW	706
205	655
WR	101
ADG	3.94
YW	1285
365	1285
YR	106

Ultrasound Data	
IMF	4.03/104
REA	14/109
Fat	0.37/112

EPDs								Dam's Production		
BW	WW	Milk	YW	SC	IMF	REA	Fat	BW	WW	YW
3.9	40	25	78		.08	.36	.009	3/99	3/102	3/102

A rancher's bull with muscle, depth, dimension and eye appeal. 623 puts a combination of traits together very nicely. He ratios above average for every trait WW, YW, ADG, IMF and scanned an actual REA of 14.7 to ratio 109. His dam is an ultra feminine, excellent uddered granddaughter of Traveler 1148. **She has ratios of BWR 3@99, WWR 3@102 and YWR 3@102, along with this she has been tremendously fertile settling first service AI her entire life.** The cows behind her have been equally productive with 4 of the cows in 6 generations reaching pathfinder status. Her other two sons have sold through our bull sale for an average of \$3500 to the Bar V Ranch near Jamestown, ND and Keith Helmuth at Watford City ND.



Mc Cumber 004 Traveler 624

Lot 8

Mc CUMBER 004 TRAVELER 624

Calved: 1/20/2006

Reg. No. 15428847

Sitz Traveler 8180
S A V 8180 Traveler 004
Boyd Forever Lady 8003

G D A R Traveler 71
Sitz Everelda Entense 1137
A A R New Trend
S V F Forever Lady 57D
Mc Cumber 124 Traveler 212
Miss Wix 235 of Mc Cumber
R R Ferdinand 758D
Gale 5127 of Mc Cumber

Individual Record	
BW	95
WW	796
205	719
WR	110
ADG	4.01
YW	1385
365	1361
YR	112

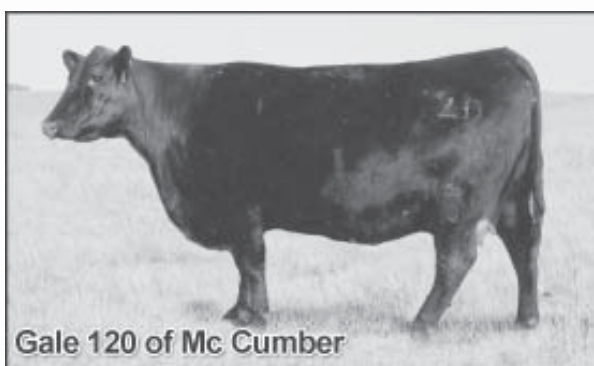
Ultrasound Data	
IMF	3.62/93
REA	12.8/99
Fat	0.38/115

EPDs								Dam's Production		
BW	WW	Milk	YW	SC	IMF	REA	Fat	BW	WW	YW
3.4	47	25	89		.04	.26	.032	4/99	4/106	4/107

Selling 2/3 interest and full possession-A tremendous herd bull prospect that combines elite performance, phenotype and an outstanding cow family together. 624 has been a standout since birth and nearly broke the 800 lb mark at weaning to ratio 110. He gained 4.01 lbs./day and weighed off test at 1385 lbs. with a 365 day weight of 1361 lbs. to ratio 112. 624 has as much volume and capacity as any bull in the sale. He combines this with thickness and a super sound structure. His dam is one of the best parts about him. Gale 120 of Mc Cumber is a tremendous daughter of Mc Cumber Foundation 701. She has all the components which make a tremendous brood cow. Gale 120 is feminine, tremendously deep bodied, wide made and easy fleshing. Her udder is well attached, with small well placed teats. She has produced two sons that have sold through our bull sales for an average of \$6000 which includes last years second high selling bull. The power and production of this cow family is second to none. **Including Gale 120, in 7 generations of cows 5 of those cows have reached pathfinder status and all have above average nursing ratios.** She has joined her granddam at Best Angus in Watford City and has entered their Embryo program. Her dam Gale 839 of Mc Cumber sold to Rafter U Cross Ranch in SD through our 2006 Female sale. **624 is a cow maker, with out sacrificing performance and carcass.**



Mc Cumber 3116 VRD 623



Gale 120 of Mc Cumber

Dam of 624



Mc Cumber 2700 Right Time 582

Maternal Brother to 624

Lot 9

Mc CUMBER NEW DAY 629

Calved: 1/21/2006

Reg. No. 15428851

A A R New Trend
Boyd New Day 8005
S V F Forever Lady 57D

Mc Cumber Foundation 701
Miss Wix 3013 of Mc Cumber
Miss Wix 575 of Mc Cumber

V D A R Shoshone 548
Donna A A R 74
Leachman Right Time
S V F Forever Lady 1128
Mc Cumber 124 Traveler 212
Miss Wix 235 of Mc Cumber
HBR Rito Bravo 1441
Miss Wix 04 of Mc Cumber

EPDs								Dam's Production		
BW	WW	Milk	YW	SC	IMF	REA	Fat	BW	WW	YW
3.3	40	21	80		-.08	.34	.012	2/96	2/95	2/98

Individual Record	
BW	88
WW	674
205	653
WR	100
ADG	3.7
YW	1218
365	1245
YR	102

Ultrasound Data	
IMF	3.52/91
REA	13.2/102
Fat	0.28/85

The combination of Boyd New Day and Mc Cumber Foundation 701 created a heavy muscled, deep bodied beef bull. His dam is a super uddered, deep bodied, easy fleshing cow. She has produced one son that sold to Clark Blake in SD. After visitors from Argentina were here this summer, they purchased a significant amount of semen on Mc Cumber Foundation 701.



Mc Cumber 004 Traveler 630



10

Mc CUMBER 004 TRAVELER 630

Calved: 1/21/2006

Reg. No. 15428852

Sitz Traveler 8180
S A V 8180 Traveler 004
Boyd Forever Lady 8003

Mc Cumber Foundation 701
Miss Wix 254 of Mc Cumber
Miss Wix 555 of Mc Cumber

G D A R Traveler 71
Sitz Everelda Entense 1137
A A R New Trend
S V F Forever Lady 57D
Mc Cumber 124 Traveler 212
Miss Wix 235 of Mc Cumber
Papa Equator 2928
Miss Wix 051 of Mc Cumber

Individual Record	
BW	85
WW	760
205	706
WR	108
ADG	3.71
YW	1305
365	1300
YR	107
Ultrasound Data	
IMF	3.95/102
REA	13.6/105
Fat	0.43/130

EPDs								Dam's Production		
BW	WW	Milk	YW	SC	IMF	REA	Fat	BW	WW	YW
2.6	47	24	86		.01	.46	.027	3/92	3/103	2/112

Selling 2/3 interest and full possession-Recommended for use on heifers- 630 is a favorite of visitors to the Ranch. **He is an attractive herd sire prospect with a wonderful muscle pattern, tremendous length and plenty of capacity.** He earned a 205 day weight of 706 lbs. to ratio 108 and a 365 day weight of 1300 lbs. to ratio 107. He combined this with a %IMF ratio of 102 and an actual REA of 14.2 to ratio 105. His dam is a powerful daughter of Foundation 701 that epitomizes a profitable beef cow. Miss Wix 254 is a moderated framed, easy fleshing, flawless uddered female, with the right amount of milk and excellent feet and legs. She stems from a line of cows that includes Miss Wix 365 of Mc Cumber and 5 consecutive generations of pathfinder cows. **630 will certainly be a favorite on sale day.**



Miss Wix 5007 of Mc Cumber

Maternal
Granddam of
631



11

Mc CUMBER 8702 DATELINE 631

Calved: 1/21/2006

Reg. No. 15431638

Vermilion Dateline 7078
Sitz Tradition RLS 8702
R L S Eisa Evergreen 5018

BT Right Time 24J
Miss Wix 3154 of Mc Cumber
Miss Wix 5007 of Mc Cumber

Connealy Dateline
Vermilion Blackbird 5044
Sitz Alliance 6595
R L S Eisa Evergreen 1078
Leachman Right Time
Sitz Everelda Entense 1905
Rito 054 G D A R
Miss Wix 365 of Mc Cumber

Individual Record	
BW	89
WW	666
205	646
WR	99
ADG	3.54
YW	1186
365	1212
YR	99
Ultrasound Data	
IMF	3.51/90
REA	12.1/94
Fat	0.41/124

EPDs								Dam's Production		
BW	WW	Milk	YW	SC	IMF	REA	Fat	BW	WW	YW
3.7	46	19	80		-.03	.40	.003	2/96	2/97	2/98

One of the best Sitz Tradition bulls to sell. 631 is a moderate framed, thick made bull with a big rump and added capacity. His dam is a moderate, easy fleshing female with excellent udder quality. Miss Wix 3154 is a granddaughter of Miss Wix 365 and one of the top BT Right Time 24J daughters on the ranch.



Mc Cumber 8702 Dateline 631



Lot 12

Mc CUMBER 449 T VALUE 633

Calved: 1/22/2006

Reg. No. 15428853

MC Cumber 7111 Total Value
MC Cumber Total Value 449
Miss Wix 7007 of Mc Cumber

Pine Creek Right Time 1147
Lassie 434 of Mc Cumber
Lassie 2140 of Mc Cumber

Vermilion Dateline 7078
Miss Wix 7111 of Mc Cumber
Mc Cumber 124 Traveler 212
Miss Wix 030 of Mc Cumber
Leachman Right Time
Sitz Everelda Entense 1137
BT New Trend 172K
Lassie 914 of Mc Cumber

Individual Record	
BW	84
WW	736
205	747
WR	115
ADG	4.01
YW	1325
365	1389
YR	114

Ultrasound Data	
IMF	3.65/94
REA	14.7/114
Fat	0.46/139

EPDs							
BW	WW	Milk	YW	SC	IMF	REA	Fat
1.8	45	29	81		0.0	.40	.041

Dam's Production			
BW	WW	YW	
1/99	1/115	1/114	

Selling 2/3 interest and full possession-Recommended for use on heifers- This powerfully muscled herd bull prospect is a favorite of mine. 633 earned a 205 day weight of 747 lbs. to ratio 115 as his dam's first calf. He continued to excel and gained 4.01 lbs./day and weighed off test at 1325 lbs. with a 365 day weight of nearly 1400 lbs. to ratio 114. **This unique calving ease prospect scanned an actual REA of 15.1 to ratio 114 and confirms the visual muscle expression this bull shows.** Along with his masculinity, 633 is very sound on his feet and legs and has depth and spring to his ribs. **This potential sale toppers dam is well on her way to following in the foot steps of her herd bull producing cow family for which she is a member.** Lassie 434 of Mc Cumber is a moderate framed, big bodied, easy fleshing female with excellent teat and udder qualities. 633's pedigree is impeccable tracing to some of the best cow making sires in the breed, as well as combining some of the most influential cow families the breed has ever known. **This unique herd sire prospect combines calving ease, muscle and performance as well as any bull in the sale.**

Lot 13

Mc CUMBER 3116 VRD 634

Calved: 1/23/2006

Reg. No. 15428854

Vermilion Dateline 7078
MC Cumber 7078 VRD 3116
Gale 836 of Mc Cumber

Mc Cumber Foundation 701
Lady Barbola 171 Mc Cumber
Lady Barbola 684 Mc Cumber

Connealy Dateline
Vermilion Blackbird 5044
Circle Oak Lucys Boy 625
Gale 6129 of Mc Cumber
Mc Cumber 124 Traveler 212
Miss Wix 235 of Mc Cumber
G D A R Gold Nugget 766
G D A R Lady Barbola 4186

Individual Record	
BW	98
WW	748
205	681
WR	105
ADG	3.69
YW	1290
365	1271
YR	105

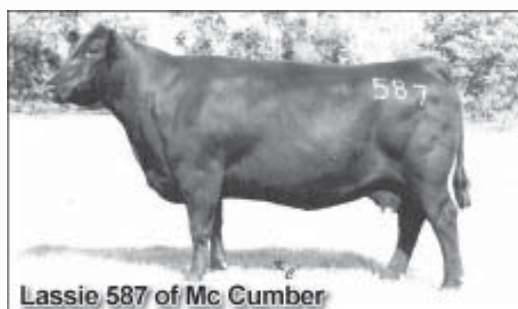
Ultrasound Data	
IMF	4.27/110
REA	12.9/100
Fat	0.39/118

EPDs							
BW	WW	Milk	YW	SC	IMF	REA	Fat
5	44	24	78		.09	.14	.020

Dam's Production			
BW	WW	YW	
4/103	4/104	4/104	

This cowboy's bull is long, thick and deep. He earned weaning and yearling ratios of 105 and IMF and REA ratios of 110 and 100 respectively. His sire Mc Cumber 7078 VRD 3116 was the second high selling bull in our 2004 bull sale for \$11,000 to Sweiger Bros. in MO and Hunt Tainter in MO. 3116 consistently sires thick, deep bodied cattle with performance and carcass. He is one of the highest VRD sons for IMF in the sire summary and continued to excel this year with a %IMF ratio of 109 and a REA ratio of 102 on 7 bulls. We also calved the first 3116 daughters this spring and they look excellent. Their udder quality is absolutely second to none. They are big barreled, wide made females that seem to be extremely easy fleshing.

The dam of 634 is one of the very best Mc Cumber Foundation 701 daughters in the herd. Her only other son sold in last year's sale to the Crider Ranch in Donnybrook for \$4250. Lady Bardola 171 is a moderate framed, good footed, easy fleshing cow, with an excellent udder and top notch production. 634 does a lot of things right.



Foundation dam of cow family.



Maternal brother to 634.

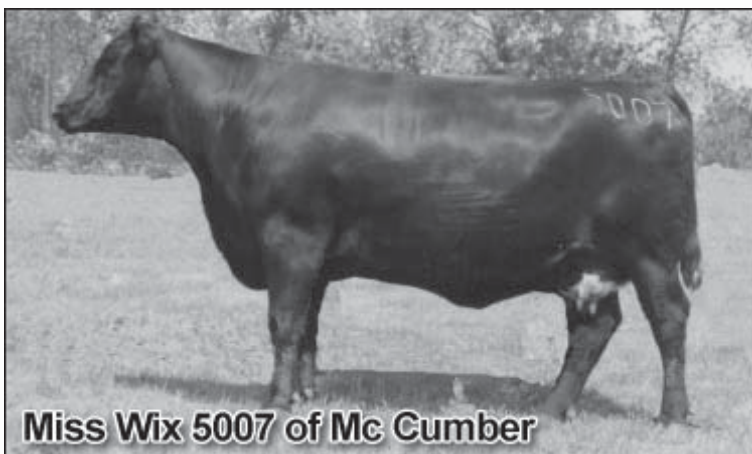




Mc Cumber 004 Traveler 637



Mc Cumber Total Value 641



Miss Wix 5007 of Mc Cumber

Maternal granddam of Lot 16.



Sire of Lot 16.

SAV 8180 Traveler 004



14

Mc CUMBER 004 TRAVELER 637

Calved: 1/23/2006

Reg. No. 15428857

Sitz Traveler 8180
S A V 8180 Traveler 004
Boyd Forever Lady 8003

Mr Wix of Mc Cumber 204
Blackcap 9128 of Mc Cumber
Blackcap 306 of Mc Cumber

G D A R Traveler 71
Sitz Everelda Entense 1137
A A R New Trend
S V F Forever Lady 57D
Tehama Bando 155
Miss Wix 204 of Mc Cumber
Mc Cumber Rito 0054
Blackcap 03 of Mc Cumber

Individual Record	
BW	84
WW	714
205	649
WR	100
ADG	3.71
YW	1260
365	1243
YR	102

EPDs								Dam's Production		
BW	WW	Milk	YW	SC	IMF	REA	Fat	BW	WW	YW
2.2	44	22	80		-.11	.10	.010	6/96	6/99	5/102

Ultrasound Data	
IMF	3.32/86
REA	13.1/102
Fat	0.32/97

Recommended for use on heifers- A long, smooth made 004 with depth of body and a sound structure. His dam is good uddered, deep bodied and has extra body length. She has produced several sons and daughter which are working for Steve Mowery in SD. Curtis Olson at Esmond, Jason Vollmer at Mc Henry and Mark Reinhardt at Mc Ville. Along with this, she sold to Hills View Angus Ranch in Sturgis SD through our 2006 female sale and is the grand dam to the outstanding Valubull son that sells as 6032.



15

Mc CUMBER TOTAL VALUE 641

Calved: 1/25/2006

Reg. No. 15428859

Vermilion Dateline 7078
MC Cumber 7111 Total Value
Miss Wix 7111 of Mc Cumber

A A R New Trend
Rosetta 1017 of Mc Cumber
Rosetta 128 of Mc Cumber

Connealy Dateline
Vermilion Blackbird 5044
G D A R Traveler 71
Miss Wix 365 of Mc Cumber
V D A R Shoshone 548
Donna A A R 74
Rito 054 G D A R
Rosetta 287 of Mc Cumber

Individual Record	
BW	97
WW	820
205	749
WR	115
ADG	3.3
YW	1305
365	1277
YR	105

EPDs								Dam's Production		
BW	WW	Milk	YW	SC	IMF	REA	Fat	BW	WW	YW
4.7	43	29	66		-.18	.40	.005	4/103	4/106	4/100

Ultrasound Data	
IMF	2.51/65
REA	13.8/107
Fat	0.3/91

This 800 lb. weaning weight bull is big topped, deep bodied and excellent on his feet and legs. This naturally thick son of Mc Cumber 7111 Total Value earned a weaning ratio of 115 to take his place near the top of the group. His dam is a wonderful daughter of AAR New Trend and maintained her pathfinder status with a WWR of 4@106 and a calving interval of 4@348 days. Rosetta 1017 is a very moderate, feminine fronted female with a superior udder. She consistently produces top progeny and is the grand dam of the herd bull prospect selling as lot 685.



16

Mc CUMBER 004 TRAVELER 643

Calved: 1/26/2006

Reg. No. 15428861

Sitz Traveler 8180
S A V 8180 Traveler 004
Boyd Forever Lady 8003

Sitz Traveler 9929
Miss Wix 0010 of Mc Cumber
Miss Wix 5007 of Mc Cumber

G D A R Traveler 71
Sitz Everelda Entense 1137
A A R New Trend
S V F Forever Lady 57D
D H D Traveler 6807
Sitz Everelda Entense 1137
Rito 054 G D A R
Miss Wix 365 of Mc Cumber

Individual Record	
BW	85
WW	716
205	656
WR	101
ADG	3.67
YW	1255
365	1243
YR	102

EPDs								Dam's Production		
BW	WW	Milk	YW	SC	IMF	REA	Fat	BW	WW	YW
2.9	43	24	83		.03	.22	.032	5/100	5/101	5/103

Ultrasound Data	
IMF	4.29/111
REA	12.5/97
Fat	0.48/145

Recommended for use on heifers- This calving ease prospect by 004 is well balanced, smooth shouldered and extra long. To go along with his above average performance he had a %IMF of 4.37 to ratio 111. His dam is an easy fleshing, good uddered, moderate framed daughter of Sitz Traveler 9929. Miss Wix 0010 is extremely fertile settling first service AI every year while maintaining a nursing ratio of 5@101. 643 is an excellent combination of calving ease, performance, carcass and female making ability.



Lot 17 Mc Cumber 449 T Value 644

Calved: 1/26/2006

Reg. No. 15428862

MC Cumber 7111 Total Value
MC Cumber Total Value 449
Miss Wix 7007 of Mc Cumber

Vermilion Dateline 7078
Miss Wix 7111 of Mc Cumber
Mc Cumber 124 Traveler 212
Miss Wix 030 of Mc Cumber
Papa Equator 2928
Rosetta 048 of Mc Cumber
Mc Cumber 124 Traveler 212
Miss Wix 0105 of Mc Cumber

EPDs								Dam's Production		
BW	WW	Milk	YW	SC	IMF	REA	Fat	BW	WW	YW
2.1	36	30	71		.01	.37	.031	4/107	4/107	4/107

Individual Record			
BW	92		
WW	700		
205	642		
WR	99		
ADG	3.48		
YW	1212		
365	1199		
YR	99		

Ultrasound Data			
IMF	2.95/76		
REA	13.2/102		
Fat	0.29/88		

Recommended for use on heifers- A deep bodied, smooth shouldered, free moving bull by McCumber T Value 449. His birth weight is a little on the high side for heifers, but his overall design and the fact that his sire is proving to be a sure fire heifer bull after calving out the second set of heifers that were bred to him, leads me to believe that heifers with some supervision should be fine. His dam Miss Wix 1101 has a stellar production record with a NR of 4@107 and YR 4@107, along with this she descends from a long line of top producers which include 4 consecutive pathfinder cows. She has produced two sons which have sold to Arne Domben in Rolette and Joe Bohl at Pleasant Lake.



Maternal brother of 644.

Lot 18 Mc Cumber 449 T Value 646

Calved: 1/26/2006

Reg. No. 15428864

MC Cumber 7111 Total Value
MC Cumber Total Value 449
Miss Wix 7007 of Mc Cumber

Vermilion Dateline 7078
Miss Wix 7111 of Mc Cumber
Mc Cumber 124 Traveler 212
Miss Wix 030 of Mc Cumber
A A R New Trend
BT Everelda Entense 57D
Mc Cumber Stretch 604
Miss Wix 063 of Mc Cumber

EPDs								Dam's Production		
BW	WW	Milk	YW	SC	IMF	REA	Fat	BW	WW	YW
-0.4	31	32	56		.09	.15	.048	2/98	2/108	2/104

Individual Record			
BW	74		
WW	722		
205	678		
WR	104		
ADG	3.33		
YW	1212		
365	1211		
YR	99		

Ultrasound Data			
IMF	4.28/110		
REA	11.9/92		
Fat	0.58/176		

Recommended for use on heifers- A bigger framed, smooth made, long bodied son of 449 that should be a sure fire heifer bull. With only a 74 lb. birth weight and a birth EPD of -.4 calving heifers to him should not be a problem. He also scanned a very good %IMF with a score of 4.28 to ratio 110.

Lot 19 Mc Cumber 449 T Value 647

Calved: 1/26/2006

Reg. No. 15428865

MC Cumber 7111 Total Value
MC Cumber Total Value 449
Miss Wix 7007 of Mc Cumber

Vermilion Dateline 7078
Miss Wix 7111 of Mc Cumber
Mc Cumber 124 Traveler 212
Miss Wix 030 of Mc Cumber
Q A S Traveler 23-4
Miss Wix 1009 of Mc Cumber
Miss Wix 352 of Mc Cumber

Individual Record			
BW	92		
WW	702		
205	644		
WR	99		
ADG	3.5		
YW	1216		
365	1204		
YR	99		

Ultrasound Data			
IMF	5.39/139		
REA	12.2/95		
Fat	0.47/142		

Recommended for use on heifers- This thick butted, deep bodied, moderate framed bull by 449 combines calving ease and IMF into a very sound, eye appealing package. 647 had a %IMF of 5.39 to ratio 139 which ranks him among the top five bulls in the sale. His dam is a 6th consecutive generation pathfinder, tracing to the grand matron Miss Wix 365 of Mc Cumber 3 times. 647 is a no miss female sire, with ability to inject some marbling into his offspring.



Maternal granddam of 647.

Lot 20 Mc Cumber 419 EQUATOR 648

Calved: 1/26/2006

Reg. No. 15499476

Mc Cumber Equator 6122
MC Cumber 6122 Equator 419
Rosetta 162 of Mc Cumber

Papa Equator 2928
Miss Wix 365 of Mc Cumber
Mc Cumber Foundation 701
Rosetta 601 of Mc Cumber
A A R New Trend
BT Everelda Entense 57D
Mc Cumber 054 Rito 326
Erianna 278 of Mc Cumber

Individual Record			
BW	87		
WW	636		
205	626		
WR	96		
ADG	2.94		
YW	1068		
365	1096		
YR	90		

Ultrasound Data			
IMF	2.97/77		
REA	11.3/88		
Fat	0.25/76		

EPDs								Dam's Production		
BW	WW	Milk	YW	SC	IMF	REA	Fat	BW	WW	YW
2.9	33	26	57		-.08	-.09	.011	2/96	2/96	2/93

Recommended for use on heifers- A calving ease prospect by Mc Cumber 6122 Equator 419. 419 sold for \$7500 as a feature of 2005 bull sale. He was used back in the herd to continue the Equator line of cattle and intensify the influence of Mc Cumber Foundation 701 in the herd through the dam of 419.

Lot 21 Mc Cumber 449 T Value 649

Calved: 1/26/2006

Reg. No. 15428866

MC Cumber 7111 Total Value
MC Cumber Total Value 449
Miss Wix 7007 of Mc Cumber

Vermilion Dateline 7078
Miss Wix 7111 of Mc Cumber
Mc Cumber 124 Traveler 212
Miss Wix 030 of Mc Cumber
R R Ferdinand 758D
Miss Wix 554 of Mc Cumber
K M A Highroller 5025
Blackcap 398 of Mc Cumber

Individual Record			
BW	92		
WW	780		
205	715		
WR	110		
ADG	2.95		
YW	1214		
365	1187		
YR	98		

Ultrasound Data			
IMF	3.63/94		
REA	12.9/93		
Fat	0.27/82		

EPDs								Dam's Production		
BW	WW	Milk	YW	SC	IMF	REA	Fat	BW	WW	YW
1.8	39	27	60		.01	-.01	.007	5/107	5/110	5/103

Recommended for use on heifers- This bigger framed bull combines calving ease and early growth. 649 earned a 205 day weight of 715 to ratio 110 and helped his dam maintain her pathfinder status with 5 calves ratioing 110 at weaning. 649's \$ weaning index of \$29.81 ranks in the top 5% of the breed for non-parent bulls. His big bodied, easy fleshing, perfect uddered dam produced last years heaviest weaning weight bull with an actual weaning weight of 900 lbs. and sold to Glenn Slabaugh at Rugby.

Lot 22

Mc CUMBER 449 T VALUE 650

Calved: 1/26/2006

Reg. No. 15428867

MC Cumber 7111 Total Value
MC Cumber Total Value 449
Miss Wix 7007 of Mc Cumber

Vermilion Dateline 7078
Miss Wix 7111 of Mc Cumber
Mc Cumber 124 Traveler 212
Miss Wix 030 of Mc Cumber
Rito 054 G D A R
Miss Wix 365 of Mc Cumber
G D A R Gold Nugget 766
Lassie 462 of Mc Cumber

Individual Record	
BW	87
WW	682
205	625
WR	96
ADG	3.31
YW	1168
365	1155
YR	95

Ultrasound Data	
IMF	4.66/120
REA	11.9/92
Fat	0.39/118

EPDs							
BW	WW	Milk	YW	SC	IMF	REA	Fat
1.4	32	24	60		.07	.06	.026

Dam's Production			
BW	WW	YW	
5/103	5/101	4/99	

Recommended for use on heifers- Another son of 449 that combines calving ease and %IMF. 650 recorded a %IMF of 4.66 to ratio 120 and traces to Miss Wix 365 of Mc Cumber 3 times. His dam is a deep bodied, easy fleshing daughter of Mc Cumber 054 Rito 5009 who has three daughters working in Registered Angus herds and one son that sold to the Yuly Ranch in 2005.



Lot 23

Mc CUMBER 383 TRADITION 653

Calved: 1/26/2006

Reg. No. 15428868

Leachman Right Time
MC Cumber Tradition 383
Lassie 7015 of Mc Cumber

N Bar Emulation EXT
Leachman Erica 0025
Mc Cumber 124 Traveler 212
Lassie 648 of Mc Cumber
Mc Cumber 054 Rito 5009
G P Blackbird 1901
Mr Wix of Mc Cumber 204
Lassie 5128 of Mc Cumber

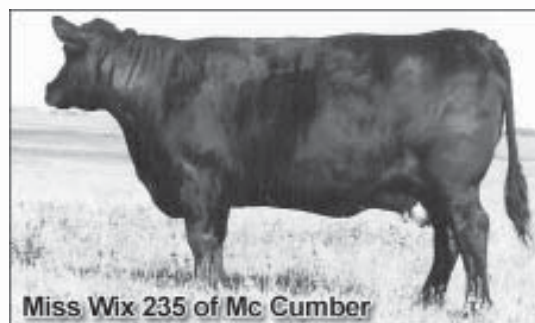
Individual Record	
BW	95
WW	782
205	717
WR	110
ADG	3.76
YW	1335
365	1319
YR	108

Ultrasound Data	
IMF	3.56/92
REA	13.1/102
Fat	0.7/212

EPDs							
BW	WW	Milk	YW	SC	IMF	REA	Fat
4.7	42	23	82		0.0	.14	.070

Dam's Production			
BW	WW	YW	
5/106	5/110	5/109	

A big, stout, thick made son of Mc Cumber Tradition 383. 653 earned a 205 day weight of 717 lbs. to ratio 110 and weighed off test at 1335 lbs. with 365 day weight of 1319 lbs. to ratio 108. **This high performing son of Tradition 383 will add payweight and sire easy fleshing, moderate framed, excellent uddered females.** His pathfinder dam maintains a NR of 5@110, while holding her flesh and settling AI for 4 consecutive years. Her Right Time son sold for \$4500 last year to Rustin Smith in NV and she currently has a wonderful 004 heifer calf nursing her this spring.



Foundation dam of Lot 25's cow family.



Lot 24

Mc CUMBER 3116 VRD 654

Calved: 1/26/2006

Reg. No. 15428869

Vermilion Dateline 7078
MC Cumber 7078 VRD 3116
Gale 836 of Mc Cumber

Connealy Dateline
Vermilion Blackbird 5044
Circle Oak Lucys Boy 625
Gale 6129 of Mc Cumber
Traveler 124 G D A R
Miss Wix 365 of Mc Cumber
V D A R Rito 953
East Fork Blue Ribbon 33

Individual Record	
BW	90
WW	768
205	704
WR	108
ADG	3.31
YW	1255
365	1234
YR	101

EPDs							
BW	WW	Milk	YW	SC	IMF	REA	Fat
4.1	45	24	73		.03	.09	.007

Dam's Production			
BW	WW	YW	
6/103	6/101	5/99	

Ultrasound Data	
IMF	3.36/87
REA	12/93
Fat	0.31/94

This long striding, big butted bull broke the 700 lb. mark at weaning to ratio 108. His dam is an ultra-feminine daughter of 212 that has produced 6 calves at weaning with a nursing ratio of 101.

Lot 25

Mc CUMBER 004 TRAVELER 655

Calved: 1/27/2006

Reg. No. 15428870

Sitz Traveler 8180
S A V 8180 Traveler 004
Boyd Forever Lady 8003

G D A R Traveler 71
Sitz Everelda Entense 1137
A A R New Trend
S V F Forever Lady 57D
Tehama Bando 155
Miss Wix 365 of Mc Cumber
Mc Cumber 124 Traveler 212
Miss Wix 8009 Mc Cumber

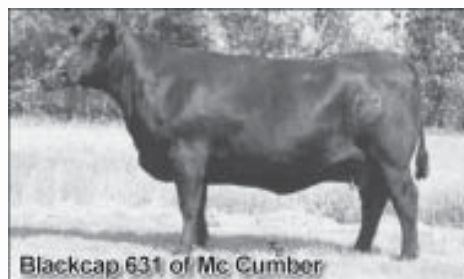
Individual Record	
BW	85
WW	690
205	713
WR	110
ADG	3.54
YW	1210
365	1279
YR	105

EPDs							
BW	WW	Milk	YW	SC	IMF	REA	Fat
2.6	47	27	82		-.08	.22	.009

Dam's Production			
BW	WW	YW	
1/100	1/110	1/105	

Ultrasound Data	
IMF	2.89/74
REA	13.6/105
Fat	0.32/97

Selling 2/3 interest and full possession-Recommended for use on heifers- This moderate framed, high volume beef bull earned a 205 day weight of 713 lbs. to ratio 110 as his dams first calf. 655 is a heavy muscled, deep bodied bull who reminds us a lot of last year's sale topper Mc Cumber 004 Traveler 513. His dam is a beautiful, moderate framed, perfect uddered daughter of Mc Cumber 155 Bando 214 and settled first service AI while doing an excellent job with 655. She traces directly to the dam of Foundation and stacks many generations of very productive cows. Her pathfinder dam Miss Wix 2190 has a WWR 3@107 and her pathfinder Grand dam Miss Wix 8009 has a WWR 4@107. **This high performing, cow maker, is a definite herd bull prospect**



Blackcap 631 of Mc Cumber
Maternal Grandam of Lot 28.



Mc Cumber 383 Tradition 549
Full brother of Lot 28.



Mc Cumber 383 Tradition 660

Lot 26

Mc CUMBER TOTAL VALUE 656

Calved: 1/27/2006

Reg. No. 15428871

Vermilion Dateline 7078
MC Cumber 7111 Total Value
Miss Wix 7111 of Mc Cumber

Connealy Dateline
Vermilion Blackbird 5044
G D A R Traveler 71
Miss Wix 365 of Mc Cumber
N Bar Emulation EXT
Leachman Erica 0025
A A R New Trend
Lassie 252 of Mc Cumber

Individual Record	
BW	96
WW	720
205	680
WR	104
ADG	3.43
YW	1224
365	1229
YR	101

Ultrasound Data	
IMF	4.23/109
REA	13.3/103
Fat	0.29/88

EPDs								Dam's Production		
BW	WW	Milk	YW	SC	IMF	REA	Fat	BW	WW	YW
4.3	43	29	74		.06	.44	.011	3/102	3/111	3/107

Selling 2/3 interest and full possession- A full brother to last year's sale feature Mc Cumber T Value 504. 504 sold to Ed and Lori Williams in MS for \$7000. 656 is a deep bodied, heavy muscled bull who ratioed very well across the board. His dam is the powerful producer Lassie 206 of Mc Cumber. Unfortunately we lost this cow this winter. Luckily we flushed her last spring and have an excellent set of calves by 004. Her influence will have to be made by her sons and daughters. Lassie 206 was a powerfully made female with an outstanding udder. She was extremely fertile, settling AI every year and maintaining a NR of 3@111 and achieving pathfinder status. She was the easiest fleshing female on the Ranch, but yet was fertile and highly productive. 656 is her last natural calf and should make a positive impact on anyone's herd.

Lot 27

Mc CUMBER 3116 VRD 657

Calved: 1/27/2006

Reg. No. 15428872

Vermilion Dateline 7078
MC Cumber 7078 VRD 3116
Gale 836 of Mc Cumber

Connealy Dateline
Vermilion Blackbird 5044
Circle Oak Lucys Boy 625
Gale 6129 of Mc Cumber
Traveler 124 G D A R
Miss Wix 365 of Mc Cumber
Rito 054 G D A R
Miss Wix 756 of Mc Cumber

Individual Record	
BW	95
WW	786
205	764
WR	117
ADG	2.95
YW	1220
365	1236
YR	101

Ultrasound Data	
IMF	4.36/112
REA	11.8/91
Fat	0.29/88

EPDs								Dam's Production		
BW	WW	Milk	YW	SC	IMF	REA	Fat	BW	WW	YW
5.7	51	25	79		.14	.04	.003	2/105	2/109	2/99

A big, rugged bull who earned a 205 day weight of 764 lbs. to ratio 117 and rank in the top 5 bulls at weaning. Along with this he had a %IMF ratio of 112. His dam is a good milking, beautiful uddered daughter of Mc Cumber 124 Traveler 212. She is also a maternal sister to the dam of 614, the big time growth bull in the sale.

Lot 28

Mc CUMBER 383 TRADITION 660

Calved: 1/28/2006

Reg. No. 15428875

Leachman Right Time
MC Cumber Tradition 383
Lassie 7015 of Mc Cumber

N Bar Emulation EXT
Leachman Erica 0025
Mc Cumber 124 Traveler 212
Lassie 648 of Mc Cumber
V D A R Rito 953
Gale 607 of Mc Cumber
Mc Cumber 124 Traveler 212
Blackcap 231 of Mc Cumber

Individual Record	
BW	95
WW	764
205	704
WR	108
ADG	3.75
YW	1315
365	1304
YR	107

Ultrasound Data	
IMF	3.8/98
REA	14.7/114
Fat	0.33/100

EPDs								Dam's Production		
BW	WW	Milk	YW	SC	IMF	REA	Fat	BW	WW	YW
2.6	34	26	66		-.06	.49	.013	6/103	6/107	6/104

Selling 2/3 interest and full possession- This muscular herd bull prospect is a full brother to last year's popular and 3rd high selling bull to Jack Reich. 660 is a moderate framed, heavy muscled beef bull. He is a wide based, good footed bull, with extra depth. **His body type would lead me to believe he will work under an array of conditions.** He has performed well at all levels with a WWR of 108, a YWR of 107 and an actual REA of 15.1 to ratio 114. His dam is a good milking, big bodied, daughter of Mc Cumber 953 Rito 420, who also sold to Jack Reich in our fall Female sale. The cows behind 660 have been very top producers.

Blackcap 807- WWR 6@107 YWR 6@104
Blackcap 631- WWR 8@102 YWR 5@102 (pathfinder)
Blackcap 231- WWR 7@105 YWR 6@103 (pathfinder)
Blackcap 013- WWR 15@100 YWR 11@101 (one of the best Viking daughters we had)

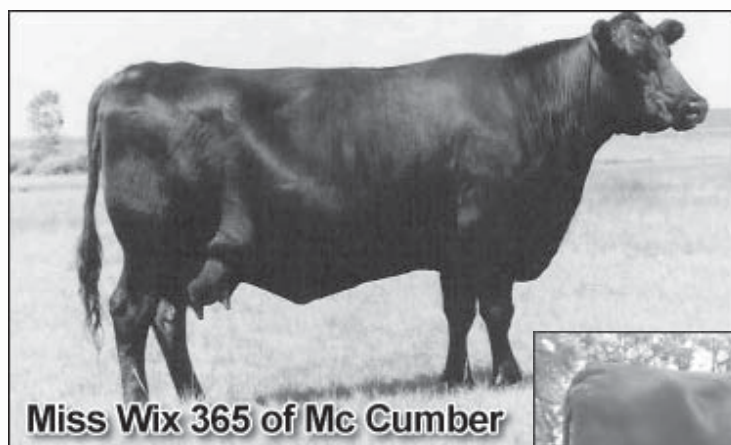
This legitimate herd bull stacks outstanding cows, phenotype and performance.



Full brother to Lot 26.

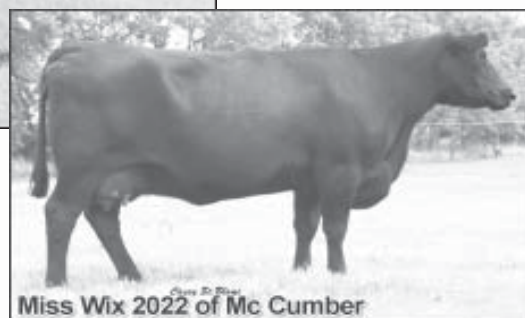


Maternal granddam
of Lot 27.



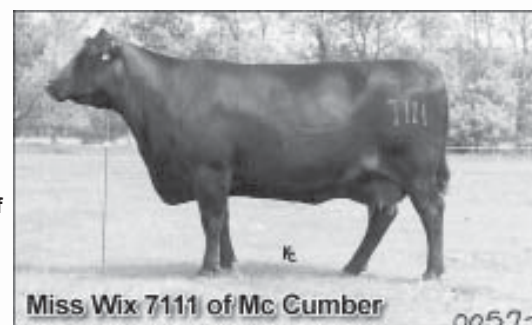
Paternal great granddam of Lot 29.
Maternal great granddam of Lot 30.
Great granddam of Lot 31.

Miss Wix 365 of Mc Cumber



Dam of Lot 31.

Miss Wix 2022 of Mc Cumber



Granddam of Lot 31.

Miss Wix 7111 of Mc Cumber

Lot 29

Mc CUMBER TOTAL VALUE 661

Calved: 1/28/2006

Reg. No. 15428876

Vermilion Dateline 7078
MC Cumber 7111 Total Value
Miss Wix 7111 of Mc Cumber

Connealy Dateline
Vermilion Blackbird 5044
G D A R Traveler 71
Miss Wix 365 of Mc Cumber
Mr Wix of Mc Cumber 204
B Pride 488 of Mc Cumber
Mc Cumber Foundation 701
Lassie 267 of Mc Cumber

Individual Record	
BW	94
WW	724
205	685
WR	105
ADG	3.09
YW	1178
365	1179
YR	97
Ultrasound Data	
IMF	3.08/79
REA	14.3/111
Fat	0.23/70

EPDs							
BW	WW	Milk	YW	SC	IMF	REA	Fat
3.5	39	30	63		-.03	.27	.003

Dam's Production			
BW	WW	YW	
3/102	3/109	3/104	

A heavy weaning weight son of Mc Cumber 7111 Total Value. He weaned off his pathfinder dam with a WWR of 105. His dam is a daughter of Mc Cumber Mr Wix 7104, who sold to Nielsen Angus Ranch in NE through our 1998 bull sale. The 7104 daughters have been very productive. 661 should sire tremendous females as well as heavy weaning steer calves.

Lot 30

Mc CUMBER 383 TRADITION 665

Calved: 1/28/2006

Reg. No. 15428878

Leachman Right Time
MC Cumber Tradition 383
Lassie 7015 of Mc Cumber

N Bar Emulation EXT
Leachman Erica 0025
Mc Cumber 124 Traveler 212
Lassie 648 of Mc Cumber
Rito 054 G D A R
Miss Wix 365 of Mc Cumber
G D A R Gold Nugget 766
Rosetta 421 of Mc Cumber

Individual Record	
BW	95
WW	640
205	591
WR	106
ADG	3.52
YW	1158
365	1154
YR	103
Ultrasound Data	
IMF	3.89/111
REA	13/110
Fat	0.33/114

EPDs							
BW	WW	Milk	YW	SC	IMF	REA	Fat
3.1	37	26	71		0.12	0.31	0.025

Dam's Production			
BW	WW	YW	
6/106	6/104	6/104	

This expressively muscled son of Mc Cumber Tradition 383 is extremely big topped and thick butted. His muscle is confirmed by the fact that he has 1.20 sq in/cwt. REA. His dam has been an excellent producer and descends from the same Rosetta cows that produced Mc Cumber 6122 Equator 8113.



Rosetta 421 of Mc Cumber

Maternal great granddam of Lot 30.

Lot 31

Mc CUMBER EXT 666

Calved: 1/28/2006

Reg. No. 15455865

Emulation N Bar 5522
N Bar Emulation EXT
N Bar Primrose 2424

Leachman Right Time
Miss Wix 2022 HC Mc Cumber
Miss Wix 7111 of Mc Cumber

Emulation 31
Ankony 8F78 Lass 8F275
Emulation 31
Primrose N Bar 9962
N Bar Emulation EXT
Leachman Erica 0025
G D A R Traveler 71
Miss Wix 365 of Mc Cumber

Individual Record	
BW	89
WW	718
205	679
WR	104
ADG	3.86
YW	1285
365	1297
YR	106
Ultrasound Data	
IMF	3.81/98
REA	13.7/106
Fat	0.21/64

EPDs							
BW	WW	Milk	YW	SC	IMF	REA	Fat
1.9	40	24	76		0.11	0.34	0.014

Dam's Production			
BW	WW	YW	
3/93	3/107	3/105	

Selling 2/3 interest and full possession-Recommended for use on heifers- 666 is destined to be a **real cow maker**. He is sired by the one and only N Bar Emulation EXT and his dam is a daughter of one of his very best cow making sons Leachman Right Time 2700. These two sires are combined with one of the most fertile and productive cow families this breed has ever known, the Miss Wix of Mc Cumber cow family. Miss Wix 2022 of Mc Cumber has been proclaimed as one of the best looking cows in the breed, by astute cattlemen that have seen her. **She looks like a cow is supposed to look.** She is feminine through her head and neck and after that has tremendous depth and shape to her rib. She is wide made and has excellent feet and legs. 2022 has an absolutely flawless udder. Her teats are small and well placed. The attachment is tight and her udder is clean with no extra hair or false teats. She has reached pathfinder status at her earliest eligibility, with a nursing ratio of 3@107 and a calving interval of 3@370. 2022 has settled AI every year as well as this year after producing 12 transferable embryos. Her full sisters have been the high selling females in our last two cow sales. In 2003 Fortune's Rafter U Cross Ranch selected Miss Wix 2021 as the \$15,000 top selling female and this past fall her just weaned full sister sold to Terry Little in MO, as the \$12,000 high selling individual. Her Miss Wix 7111 of Mc Cumber is the dam of Mc Cumber 7111 Total Value and has been one of the top producing daughters of Miss Wix 365 of Mc Cumber.

The cow power of 666 should not over shadow his top-notch performance and excellent REA. 666 is a long bodied, smooth shouldered bull with a gentle disposition. **His ability to sire elite females is bred in!!**



Mc Cumber 004 Traveler 668

Lot 32 Mc CUMBER 004 TRAVELER 668

Calved: 1/28/2006

Reg. No. 15428879

Sitz Traveler 8180
S A V 8180 Traveler 004
Boyd Forever Lady 8003

G D A R Traveler 71
Sitz Everelda Entense 1137
A A R New Trend
S V F Forever Lady 57D
V D A R Rito 953
Gale 607 of Mc Cumber
Mc Cumber 054 Rito 5009
Blackcap 339 of Mc Cumber

Mc Cumber 953 Rito 420
Blackcap 918 of Mc Cumber
Blackcap 738 of Mc Cumber

EPDs								Dam's Production		
BW	WW	Milk	YW	SC	IMF	REA	Fat	BW	WW	YW
2.4	48	23	82		-0.06	.05	.007	6/101	6/104	6/102

Individual Record					
BW	95	WW	780	205	718
WR	110	ADG	3.84	YW	1345
365	1332	YR	109		

Ultrasound Data			
IMF	3.61/93		
REA	12.8/99		
Fat	0.31/94		

A definite eye catcher with outstanding performance. 668 is long, deep ribbed and has extra thickness. He earned a 205 day weight of 718 to ratio 110 gained 3.84 lb/day and weighed off test at 1345 lbs. with a 365 day weight of 1332 lbs. to ratio 109. His dam is an outstanding producer with a NR 6@104 and has never missed on first service AI. She is a super uddered, deep bodied daughter of the calving ease specialist Mc Cumber 953 Rito 420. He falls just outside our parameters of a heifer bull, but heifers that are supervised will probably get along just fine. **You won't have a problem finding this bull. He is a stand out.**

Lot 33 Mc CUMBER TOTAL VALUE 670

Calved: 1/28/2006

Reg. No. 15428881

Vermilion Dateline 7078
MC Cumber 7111 Total Value
Miss Wix 7111 of Mc Cumber

Connealy Dateline
Vermilion Blackbird 5044
G D A R Traveler 71
Miss Wix 365 of Mc Cumber
Rito 054 G D A R
Miss Wix 365 of Mc Cumber
Mc Cumber 124 Traveler 212
B Pride 274 of Mc Cumber

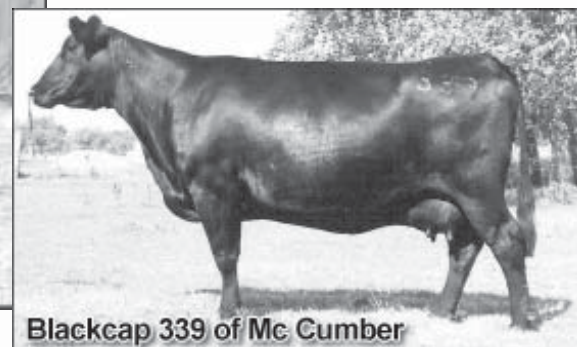
Mc Cumber 054 Rito 326
B Pride 2006 of Mc Cumber
B Pride 5122 of Mc Cumber

EPDs								Dam's Production		
BW	WW	Milk	YW	SC	IMF	REA	Fat	BW	WW	YW
4.3	35	30	56		.11	.05	.031	3/102	3/105	3/100

Individual Record					
BW	95	WW	695	205	659
WR	101	ADG	3.08	YW	1148
365	1152	YR	95		

Ultrasound Data			
IMF	3.87/100		
REA	11.4/88		
Fat	0.33/100		

A moderate framed, deep bodied, son of Total Value. His highly productive dam made pathfinder this year with a nursing ratio of 3@105 and a calving interval of 3@362 days. She has produced one graduate of our bull sale selling to Paul Foss ND, for \$3750 and a full sister sold to Kayla Williams in MS to be shown in the National Junior Angus Show.



Blackcap 339 of Mc Cumber

Maternal great granddam of Lot 32.

Lot 34 Mc CUMBER 9802 VALUBULL 673

Calved: 1/29/2006

Reg. No. 15429671

Sitz Value 7097
Sitz Triangle S Valubull
Sitz Barbaramere Nell 1590

Sitz Traveler 6802
Sitz Eisa Evergreen 791
D H D Traveler 6807
Sitz Barbaramere Nell 2124
A A R New Trend
S V F Forever Lady 57D
Mc Cumber 6122 Equator 8113
Lassie 708 of Mc Cumber

Boyd New Day 8005
Lassie 4117 of Mc Cumber
Lassie 1155 of Mc Cumber

EPDs								Dam's Production		
BW	WW	Milk	YW	SC	IMF	REA	Fat	BW	WW	YW
-1.8	42	21	81		.09	.12	-.002	1/78	1/99	1/102

Individual Record					
BW	65	WW	616	205	647
WR	99	ADG	3.71	YW	1162
365	1241	YR	102		

Ultrasound Data			
IMF	4.46/115		
REA	11.9/92		
Fat	0.28/85		

Recommended for use on heifers- This heifer bull supreme started life with a 65 lb. birth weight. His BW EPD of -1.8 is in the lightest one percent of the breed. Starting small didn't limit his performance with 205 day weight of 650 lbs. and gaining 3.71 lbs./day he recorded a 365 day weight of nearly 1250 lbs. for a ratio of 102. To go along with this he scanned a %IMF of 4.46 to ratio 115, while only ratioing 85 for BFat. 673 is a deep bodied, moderate framed son of Valubull, with natural thickness and a masculine look.



Mc Cumber 9802 Valubull 673

Lot 35

Mc CUMBER 419 EQUATOR 674

Calved: 1/29/2006

Reg. No. 15499479

Mc Cumber Equator 6122
MC Cumber 6122 Equator 419
Rosetta 162 of Mc Cumber

Papa Equator 2928
Miss Wix 365 of Mc Cumber
Mc Cumber Foundation 701
Rosetta 601 of Mc Cumber
A A R New Trend
BT Everelda Entense 57D
Circle Oak Lucys Boy 625
Rosetta 777 HC of Mc Cumber

Individual Record	
BW	70
WW	622
205	653
WR	107
ADG	3.47
YW	1132
365	1208
YR	108

Ultrasound Data	
IMF	3.84/99
REA	11/88
Fat	0.36/116

EPDs							
BW	WW	Milk	YW	SC	IMF	REA	Fat
3.0	36	29	71		.01	-.05	.022

Dam's Production			
BW	WW	YW	
1/111	1/101	1/105	

This bull had only a 70 lb. birth weight, but was a twin. I would use him on cows before trying him on heifers, because there could be some birth weight coming from the cow side of the pedigree. 674 is a high volume, naturally thick bull with excellent feet and legs.

Lot 36

Mc CUMBER 8702 DATELINE 676

Calved: 1/29/2006

Reg. No. 15431641

Vermilion Dateline 7078
Sitz Tradition RLS 8702
R L S Eisa Evergreen 5018

Connealy Dateline
Vermilion Blackbird 5044
Sitz Alliance 6595
R L S Eisa Evergreen 1078
G A R Precision 1680
Stone Gate Jessie
Mc Cumber Foundation 701
Gale 839 of Mc Cumber

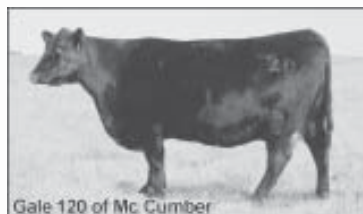
Individual Record	
BW	94
WW	622
205	618
WR	95
ADG	3.14
YW	1084
365	1120
YR	92

Ultrasound Data	
IMF	3.73/96
REA	12.6/98
Fat	0.22/67

EPDs							
BW	WW	Milk	YW	SC	IMF	REA	Fat
4.0	42	18	74		.11	.34	0.0

Dam's Production			
BW	WW	YW	
2/100	2/93	2/93	

A very shapely muscled son of Sitz Tradition. He has a REA/CWT of 1.26, which explains the muscle definition he displays. His Grand dam is the mother to the herd bull prospect selling as lot 624.



Gale 120 of Mc Cumber

Maternal granddam of Lot 36.

Lot 37

Mc CUMBER 004 TRAVELER 677

Calved: 1/30/2006

Reg. No. 15428884

Sitz Traveler 8180
S A V 8180 Traveler 004
Boyd Forever Lady 8003

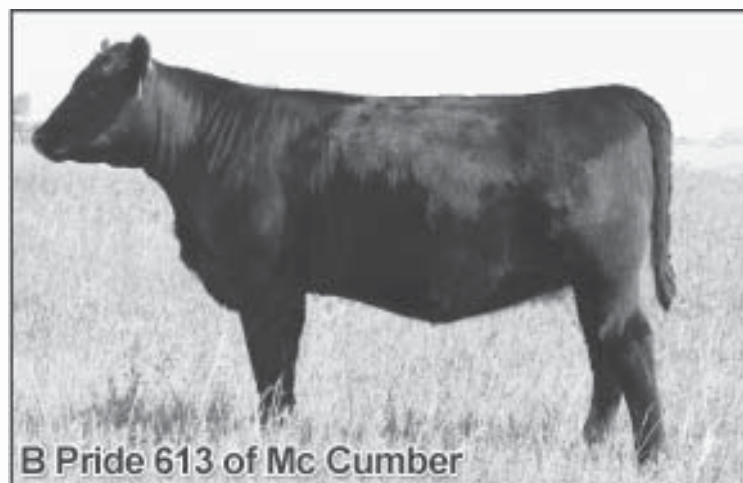
G D A R Traveler 71
Sitz Everelda Entense 1137
A A R New Trend
S V F Forever Lady 57D
R R Ferdinand 758D
Miss Wix 554 of Mc Cumber
Mc Cumber 124 Traveler 212
B Pride 245 of Mc Cumber

Individual Record	
BW	98
WW	762
205	706
WR	108
ADG	3.8
YW	1320
365	1314
YR	108

Ultrasound Data	
IMF	3.64/94
REA	13.2/102
Fat	0.36/109

EPDs							
BW	WW	Milk	YW	SC	IMF	REA	Fat
4.4	51	23	91		0.0	.35	.008

Selling 2/3 interest and full possession- An outstanding bull on paper as well as in the pen. His EPD portfolio is excellent and he displays exceptional thickness, muscle and style. This attractive, meaty son of 004 earned a 205 day weight of 706 lbs. to ratio 108, gained 3.8 lbs./day and weighed of test at 1320 lbs. with a 365 day weight of 1314 lbs. to ratio 108. His weaning and yearling EPD's of 51 and 91 respectively, rank in the top 10% of the breed for non-parent bulls. His dam is a feminine, long bodied, perfect uddered female, with outstanding ratios across the board. She has a WWR 4@104, YWR 3@101, IMF 2@115 and REA 2@107. She has produced two sons that have sold to Arne Domben of Rolette and David Wagner in Towner. Her only daughter sold to Clinton Crider and was successfully shown in the North Dakota Junior show circuit this past summer. **You won't have any trouble spotting 677 on sale day. A definite herd bull candidate.**



B Pride 613 of Mc Cumber

Heifer calf from the same family as Lot 38.

Lot 38

Mc CUMBER 449 T VALUE 679

Calved: 1/30/2006

Reg. No. 15428886

MC Cumber 7111 Total Value
MC Cumber Total Value 449
Miss Wix 7007 of Mc Cumber

Vermilion Dateline 7078
Miss Wix 7111 of Mc Cumber
Mc Cumber 124 Traveler 212
Miss Wix 030 of Mc Cumber
Sitz Traveler 8180
Boyd Forever Lady 8003
Mc Cumber 054 Rito 326
B Pride 5122 of Mc Cumber

Individual Record	
BW	80
WW	622
205	655
WR	101
ADG	3.59
YW	1150
365	1229
YR	101

Ultrasound Data	
IMF	4.16/107
REA	12.1/94
Fat	0.37/112

EPDs							
BW	WW	Milk	YW	SC	IMF	REA	Fat
1.8	36	29	67		.04	.20	.031

Dam's Production			
BW	WW	YW	
1/94	1/101	1/101	

Recommended for use on heifers- A smooth shoulder, deep bodied, moderate framed son of 449 and out of an excellent 004 daughter who descends from a strong producing cow family.



Mc Cumber Total Value 449

Sire of Lot 38. Shown here as a yearling.



Mc Cumber 004 Traveler 677



39

Mc CUMBER 004 TRAVELER 680

Calved: 1/30/2006

Peg. No. 15428887

Sitz Traveler 8180
S A V 8180 Traveler 004
Boyd Forever Lady 8003

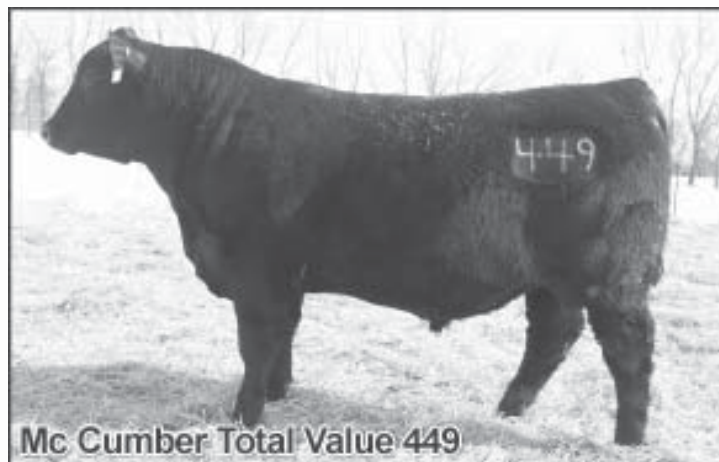
MC Cumber 7111 Total Value
Miss Wix 450 of Mc Cumber
Miss Wix 1007 of Mc Cumber

G D A R Traveler 71
Sitz Everelda Entense 1137
A A R New Trend
S V F Forever Lady 57D
Vermilion Dateline 7078
Miss Wix 7111 of Mc Cumber
Mc Cumber 124 Traveler 212
Miss Wix 030 of Mc Cumber

EPDs								Dam's Production		
BW	WW	Milk	YW	SC	IMF	REA	Fat	BW	WW	YW
3.5	47	27	85		.07	.17	.009	1/104	1/101	1/104

Individual Record	
BW	89
WW	626
205	660
WR	101
ADG	3.84
YW	1190
365	1274
YR	104
Ultrasound Data	
IMF	4.05/104
REA	11.3/88
Fat	0.27/82

A big framed, high gaining son of 004. If you are looking to add some stretch to a set of calves, this bull may be for you.



Full brother in blood to dam of Lot 39.



40

Mc CUMBER 3116 VRD 685

Calved: 1/31/2006

Peg. No. 15428889

Vermilion Dateline 7078
MC Cumber 7078 VRD 3116
Gale 836 of Mc Cumber

MC Cumber 701 Fndation 1110
Rosetta 3173 of Mc Cumber
Rosetta 1017 of Mc Cumber

Connealy Dateline
Vermilion Blackbird 5044
Circle Oak Lucys Boy 625
Gale 6129 of Mc Cumber
Mc Cumber Foundation 701
Lassie 830 of Mc Cumber
A A R New Trend
Rosetta 128 of Mc Cumber

EPDs								Dam's Production		
BW	WW	Milk	YW	SC	IMF	REA	Fat	BW	WW	YW
5	43	26	74		.15	.42	.023	2/104	2/108	2/105

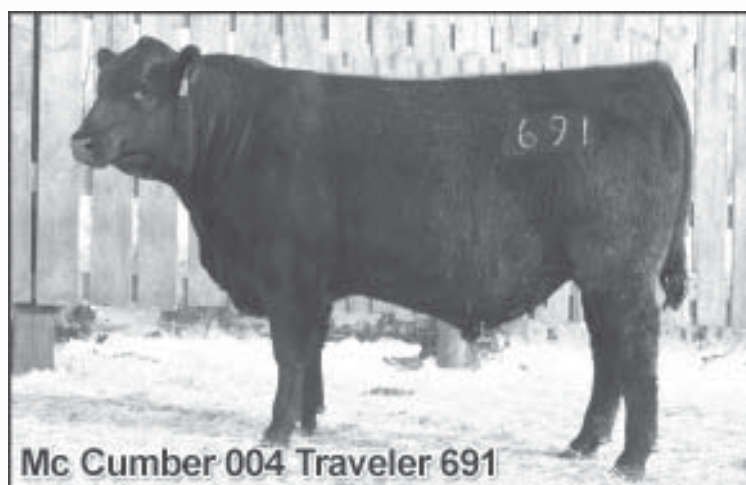
Individual Record	
BW	93
WW	724
205	714
WR	110
ADG	3.33
YW	1214
365	1247
YR	103
Ultrasound Data	
IMF	4.27/110
REA	14.9/116
Fat	0.4/121

Selling 2/3 interest and full possession- This herd bull prospect has been a favorite of mine all year and has not disappointed at any measure. He possesses as much natural thickness, muscle and stoutness as any bull in this sale. 685 is a moderate framed bull with an abundance of rib, a big hip and excellent scrotal development. **He weaned off his 1174 lb. dam at 724 lbs. with out pasture supplementation and earned a 205 day weight of 714 lbs. to ratio 110. She weaned off 61% of her body weight in a drought year.** Along with this she has settled AI every year and is currently nursing another tremendous bull calf. To add to his stats, he recorded a %IMF of 4.27 to ratio 110 and had an actual REA 15.1 with a ratio of 116. **This bull has all the bases covered.**

Sale Day Telephones

701.246.3366
701.871.9800
701.871.1072

Or Contact Superior Productions at
1-800-431-4452 to pre-register for a buyer's
number and gain access to the bid line number.



Mc Cumber 004 Traveler 691

Lot 41

Mc CUMBER 004 TRAVELER 691

Calved: 2/2/2006

Reg. No. 15428895

Sitz Traveler 8180
S A V 8180 Traveler 004
Boyd Forever Lady 8003

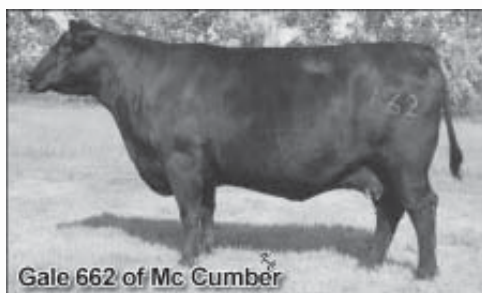
G D A R Traveler 71
Sitz Everelda Entense 1137
A A R New Trend
S V F Forever Lady 57D
Papa Equator 2928
Rosetta 048 of Mc Cumber
Mc Cumber 124 Traveler 212
Gale 345 of Mc Cumber

Individual Record	
BW	103
WW	742
205	693
WR	106
ADG	3.97
YW	1325
365	1328
YR	109

Ultrasound Data	
IMF	4.42/114
REA	12/93
Fat	0.45/136

EPDs								Dam's Production		
BW	WW	Milk	YW	SC	IMF	REA	Fat	BW	WW	YW
5.4	50	28	91		.08	.28	.027	4/108	4/111	4/107

This high performing, deep ribbed, 004 weaned off at 742 lbs. to ratio 106 gained nearly 4.00 lbs/day, and weighed off test at 1325 lbs. with a 365 day weight of 1328 to ratio 109. His dam is a wonderful pathfinder daughter of Mc Cumber Powertrain, with a WWR of 4@111, YWR of 4@107, IMF of 4@119, and REA 4@106. Gale 1124 is feminine fronted, yet deep and powerful. She has an excellent udder with small teats, and raises a good one every year.



Gale 662 of Mc Cumber

Maternal granddam of Lot 41.

Lot 42

Mc CUMBER TOTAL VALUE 692

Calved: 2/2/2006

Reg. No. 15428896

Vermilion Dateline 7078
MC Cumber 7111 Total Value
Miss Wix 7111 of Mc Cumber

Connealy Dateline
Vermilion Blackbird 5044
G D A R Traveler 71
Miss Wix 365 of Mc Cumber
Rito 054 G D A R
Miss Wix 365 of Mc Cumber
Papa Equator 2928
Miss Wix 051 of Mc Cumber

Individual Record	
BW	86
WW	710
205	662
WR	102
ADG	3.17
YW	1176
365	1169
YR	96

Ultrasound Data	
IMF	3.43/88
REA	12/93
Fat	0.28/85

EPDs								Dam's Production		
BW	WW	Milk	YW	SC	IMF	REA	Fat	BW	WW	YW
3.0	43	22	70		-.08	.15	.003	6/96	6/98	5/98

Moderate framed, deep bodied, and naturally thick best describes this son of Mc Cumber 7111 Total Value. He is linebred to the Miss Wix cow family tracing to Miss Wix 365 3 times in 5 generations.



Mc Cumber 3116 VRD 693

Lot 43

Mc CUMBER 3116 VRD 693

Calved: 2/2/2006

Reg. No. 15428897

Vermilion Dateline 7078
MC Cumber 7078 VRD 3116
Gale 836 of Mc Cumber

Connealy Dateline
Vermilion Blackbird 5044
Circle Oak Lucys Boy 625
Gale 6129 of Mc Cumber
Sitz Traveler 9929
BT Everelda Entense 57D
Papa Equator 2928
Lassie 648 of Mc Cumber

Individual Record	
BW	96
WW	720
205	690
WR	106
ADG	4.49
YW	1380
365	1408
YR	116

Ultrasound Data	
IMF	4.49/116
REA	13/101
Fat	0.29/88

EPDs								Dam's Production		
BW	WW	Milk	YW	SC	IMF	REA	Fat	BW	WW	YW
5.0	45	27	89		.09	.19	.005	3/96	3/106	3/108

Selling 2/3 interest and full possession- This powerhouse herd bull prospect is big middle, stout made, and thick from end to end. 693 is the high gaining bull on test at 4.50 lbs/day, and earned the third highest 365 day weight at 1408 lbs with a ratio of 116. Not only did he perform at the top of the contemporary group but recorded excellent ultrasound data as well. He scanned a %IMF of 4.49 to ratio 116 while ratioing only 88 on RF, and earning a REA ratio of 101. His dam is a member of the herd bull producing Lassie of Mc Cumber cow family. Lassie 2007 has already produced one herd bull that sold to AI and Vicki DeClerk in AR for \$4250 through our 2005 bull sale. **She is a third consecutive generation pathfinder with a WWR of 3@106 and YWR of 3@108.** The Grand dam is Lassie 587 of Mc Cumber who is the powerful Equator daughter that sold in our 2003 cow sale for \$6000 to ETR Ranch in KS. The Great Grand Dam is Lassie 648 of Mc Cumber who is also the Grand dam to our herd bull Mc Cumber Tradition 383. **This top of the line herd bull prospect has the cow power behind him to propel your herd to the next level.**



Lassie 587 of Mc Cumber

Maternal granddam of Lot 43.

Lot 44

Mc CUMBER 004 TRAVELER 694

Calved: 2/2/2006

Reg. No. 15428898

Sitz Traveler 8180
S A V 8180 Traveler 004
Boyd Forever Lady 8003

G D A R Traveler 71
Sitz Everelda Entense 1137
A A R New Trend
S V F Forever Lady 57D
Mc Cumber 124 Traveler 212
Miss Wix 235 of Mc Cumber
Mc Cumber Stretch 604
Miss Wix 256 of Mc Cumber

Individual Record	
BW	105
WW	646
205	605
WR	93
ADG	3.28
YW	1128
365	1130
YR	93

Ultrasound Data	
IMF	4.34/112
REA	11/85
Fat	0.26/79

EPDs								Dam's Production		
BW	WW	Milk	YW	SC	IMF	REA	Fat	BW	WW	YW
5.6	39	21	68		.10	0.0	.001	4/104	4/96	4/98

A bigger birth weight son of 004 that will be fine on mature cows. The combination of 004 and Foundation 701 is one that will leave you outstanding females and male counterparts that will grow to weaning, and perform in the feedlot.

Lot 45

Mc CUMBER 4X13 EXTRA 695

Calved: 2/2/2006

Reg. No. 15431770

N Bar Emulation EXT
Sinclair Extra 4X13
N Bar Lady Ida S C C 2P37

Emulation N Bar 5522
N Bar Primrose 2424
N Bar Prime Time D806
N Bar Lady Ida F1080
Sitz Traveler 8180
Boyd Forever Lady 8003
Leachman Right Time
Lassie 653 of Mc Cumber

Individual Record	
BW	71
WW	540
205	583
WR	90
ADG	3.37
YW	1036
365	1122
YR	92

Ultrasound Data	
IMF	3.92/101
REA	12.3/95
Fat	0.27/82

EPDs							
BW	WW	Milk	YW	SC	IMF	REA	Fat
-1.1	39	20	73		.15	.22	.022

The first son of our exciting new Herd sire Sinclair Extra 4X13. **The first calf crop by 4X13 has exceeded our expectations.** 4X13 is a sure-fire heifer bull, with above average performance on a moderate frame, and exceptional carcass composition. 4X13 came out of the breeding pasture weighing 2000 lbs, after cleaning up 120 heifers for one heat cycle, and 55 cows for 60 days.

He measured a 5.2 frame, and was in a body condition score of 6. 695 is a moderate framed heavy muscled bull with depth from fore rib to flank. His birth weight of 71 lbs. and BW EPD of -1.1 should ensure his ability to be a "sleep all night heifer bull". To go along with this, if you want to reduce some mature size, and create perfect uddered, functional females, that flesh, and breed on roughage, 695 should be able to do that.



Sinclair Extra 4X13

Sire of Lot 45.

Lot 46

Mc CUMBER 449 T VALUE 697

Calved: 2/2/2006

Reg. No. 15428900

MC Cumber 7111 Total Value
MC Cumber Total Value 449
Miss Wix 7007 of Mc Cumber

Vermilion Dateline 7078
Miss Wix 7111 of Mc Cumber
Mc Cumber 124 Traveler 212
Miss Wix 030 of Mc Cumber
A A R New Trend
BT Everelda Entense 57D
Mc Cumber Foundation 701
Lassie 587 of Mc Cumber

Individual Record	
BW	89
WW	632
205	609
WR	94
ADG	3.77
YW	1186
365	1212
YR	100

Ultrasound Data	
IMF	3.38/87
REA	12.5/97
Fat	0.3/91

EPDs							
BW	WW	Milk	YW	SC	IMF	REA	Fat
1.9	30	29	59		-.02	.08	.013

A super stylish, big hipped, long bodied, calving ease son of Mc Cumber Total Value 449. His dam is a beautiful fronted, perfect uddered daughter of BT New Trend 172K, and a member of the Lassie cow family. She is also the Grand dam to the herd sire prospect selling as lot 633.

Lot 47

Mc CUMBER 8702 VRD 699

Calved: 2/3/2006

Reg. No. 15431643

Vermilion Dateline 7078
Sitz Tradition RLS 8702
R L S Eisa Evergreen 5018

Connealy Dateline
Vermilion Blackbird 5044
Sitz Alliance 6595
R L S Eisa Evergreen 1078
Mc Cumber Equator 6122
Rosetta 421 of Mc Cumber
Tehama Bando 155
Rosetta 214 of Mc Cumber

Individual Record	
BW	98
WW	688
205	663
WR	102
ADG	3.77
YW	1242
365	1266
YR	104

Ultrasound Data	
IMF	2.76/71
REA	11.8/91
Fat	0.37/112

EPDs							
BW	WW	Milk	YW	SC	IMF	REA	Fat
4.5	47	22	85		-.14	.32	.011

A big, stout, son of Sitz Tradition, with good performance and top notch EPDs. His dam is a fabulous uddered daughter of Mc Cumber 6122 Equator 8113.



Lot 48

Mc CUMBER 004 TRAVELER 6004

Calved: 2/16/2006

Reg. No. 15428712

Sitz Traveler 8180
S A V 8180 Traveler 004
Boyd Forever Lady 8003

G D A R Traveler 71
Sitz Everelda Entense 1137
A A R New Trend
S V F Forever Lady 57D
Emulation N Bar 5522
N Bar Primrose 2424
G D A R Royce 131
Homestretch Miss Wix 301

Individual Record	
BW	88
WW	738
205	717
WR	100
ADG	3.07
YW	1190
365	1208
YR	100

Ultrasound Data	
IMF	4.27/105
REA	13.8/103
Fat	0.34/117

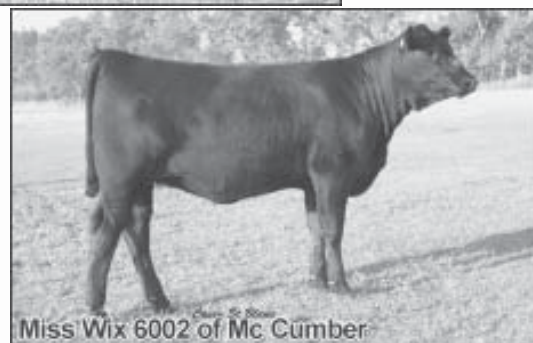
EPDs							
BW	WW	Milk	YW	SC	IMF	REA	Fat
2.9	50	26	91		-.03	.33	.016

Selling 2/3 interest and full possession-Recommended for use on heifers- This genuine herd sire prospect is a moderate framed, deep bodied, super structured son of 004, and **out of one of the most stunning EXT daughters in existence.** He combines weaning and yearling EPDs in the top 10% of the breed with a %IMF of 4.27 to ratio 105 and a REA of 13.8 to ratio 103. His flush sister was the \$7250 sale feature in this past Fall's female to Bohi in KS. The dam to 6004 is in a joint embryo program with Oak Hill Angus Farm in VA, and has produced many top selling progeny through their sale, as well as a top selling heifer calf in the Genex Influenced sale in TN. His dam has a near flawless phenotype, and is member of the Miss Wix of Mc Cumber cow family. This big scrotaled, long bodied, wide based **herd improver** has the genetic power to sire outstanding females, and males with performance, and growth in the right kind of package. **This genuine herd sire prospect has the bred in ability to move your herd in the right direction.**



Oak Hill Miss Wix 9042

Dam of Lot 48.



Miss Wix 6002 of Mc Cumber

Flush sister of Lot 48.

Lot 49 Mc CUMBER 004 TRAVELER 6005

Calved: 2/16/2006

Reg. No. 15428713

Sitz Traveler 8180
S A V 8180 Traveler 004
Boyd Forever Lady 8003

A A R New Trend
Gale 045 of Mc Cumber
Gale 783 of Mc Cumber

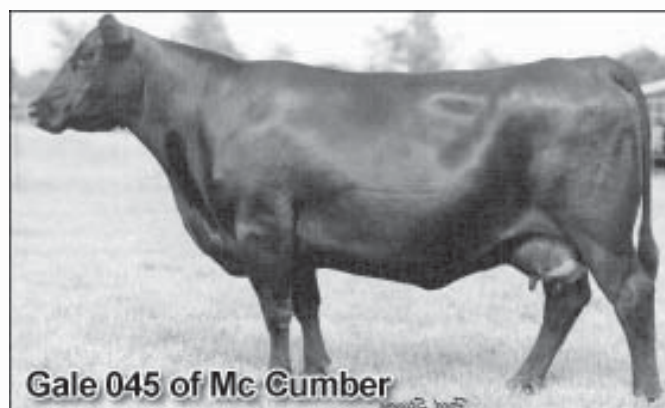
G D A R Traveler 71
Sitz Everelda Entense 1137
A A R New Trend
S V F Forever Lady 57D
V D A R Shoshone 548
Donna A A R 74
Mc Cumber Cash 435
Gale 413 of Mc Cumber

Individual Record	
BW	90
WW	738
205	717
WR	100
ADG	3.24
YW	1214
365	1235
YR	100

Ultrasound Data	
IMF	4.17/102
REA	14/104
Fat	0.28/97

EPDs								Dam's Production		
BW	WW	Milk	YW	SC	IMF	REA	Fat	BW	WW	YW
4.0	45	26	79		.04	.57	-.004	7/102	7/109	7/109

Selling 2/3 interest and full possession- This long bodied, stout made, heavy muscled herd bull prospect is a son of one of the top cows to ever graze our pastures. Gale 045 of Mc Cumber is a 5th consecutive generation pathfinder with production ratios that are second to none. She has a WWR 7@109, YWR 7@109, IMF 23@108, and REA 23@106. She has produced several herd sires including the 8007 bull. He sold to Gray Krauth in IA, and has since returned to ND as the Sr. Herd sire for Gurr Lake Angus Ranch in Rolette. She produced another son that sold to Gary Anderson at Carrington, and a daughter that sold to Three Trees Ranch in GA as a \$17,250 feature of a past cow sale.



Dam of Lot 49.

Lot 50 Mc CUMBER EXT 6006

Calved: 2/18/2006

Reg. No. 15455858

Emulation N Bar 5522
N Bar Emulation EXT
N Bar Primrose 2424

Rito 054 G D A R
Miss Wix 5007 of Mc Cumber
Miss Wix 365 of Mc Cumber

Emulation 31
Ankony 8F78 Lass 8F275
Emulation 31
Primrose N Bar 9962
C S U Rito 4114
Blackcap Forever 485 G D A R
Shoshone 247 P J M
Miss Wix 294 of Mc Cumber

Individual Record	
BW	90
WW	730
205	714
WR	100
ADG	2.76
YW	1136
365	1156
YR	100

Ultrasound Data	
IMF	5.04/124
REA	13.2/99
Fat	0.43/148

EPDs								Dam's Production		
BW	WW	Milk	YW	SC	IMF	REA	Fat	BW	WW	YW
2.1	30	22	59		.16	.30	.033	4/98	4/101	4/102

6006-6009-Selling 2/3 interest and full possession-Recommended for use on heifers- This pair of look alike flush brothers are moderate, long, deep, and heavier muscled than most EXTs. They are wide based, and perfect on their feet and legs. These calving ease herd bulls are stacked with maternal function. Their dam is a full sister to Miss Wix 903 of Mc Cumber, who left an impact on the Angus breed, and her dam is the incomparable Miss Wix 365. These heavy muscled EXT sons also scanned very well. 6006 recorded a %IMF of 5.04 to ratio 124, and 6009 scanned a 14.4 REA to ratio 107, which is a 1.28 REA/cwt.



Dam of Lots 50 and 51.



Dam of Lot 52.

Lot 51 Mc CUMBER EXT 6009

Calved: 2/18/2006

Reg. No. 15455860

Emulation N Bar 5522
N Bar Emulation EXT
N Bar Primrose 2424

Rito 054 G D A R
Miss Wix 5007 of Mc Cumber
Miss Wix 365 of Mc Cumber

Emulation 31
Ankony 8F78 Lass 8F275
Emulation 31
Primrose N Bar 9962
C S U Rito 4114
Blackcap Forever 485 G D A R
Shoshone 247 P J M
Miss Wix 294 of Mc Cumber

Individual Record	
BW	88
WW	714
205	698
WR	100
ADG	2.69
YW	1110
365	1128
YR	100

Ultrasound Data	
IMF	3.14/77
REA	14.4/107
Fat	0.24/83

EPDs								Dam's Production		
BW	WW	Milk	YW	SC	IMF	REA	Fat	BW	WW	YW
2.1	30	22	59		-.06	.43	.012	4/98	4/101	4/102

Lot 52 Mc CUMBER 5321 F DRCTN 6010

Calved: 2/26/2006

Reg. No. 15428715

G A R Precision 1680
C A Future Direction 5321
C A Miss Power Fix 308

Mc Cumber 124 Traveler 212
Blackcap 631 of Mc Cumber
Blackcap 231 of Mc Cumber

Tehama Bando 155
9J9 G A R 856
S A F Power Fix
C A Lady Eight 1015
Traveler 124 G D A R
Miss Wix 365 of Mc Cumber
A A R New Trend
Blackcap 013 of Mc Cumber

Individual Record	
BW	94
WW	674
205	677
WR	100
ADG	3.12
YW	1132
365	1176
YR	100

Ultrasound Data	
IMF	3.38/83
REA	15.3/114
Fat	0.29/100

EPDs								Dam's Production		
BW	WW	Milk	YW	SC	IMF	REA	Fat	BW	WW	YW
2.6	33	29	61		.16	.77	-.003	8/107	8/102	5/102

This deep bodied, heavy muscled son of CA Future Direction scanned a REA of 15.1 and adjusted to 15.3 to have the seconded largest adjusted REA of the entire bull calf crop. His REA EPD of .77 is the #1 REA EPD of the bulls and ranks him in the top 2% of the entire Angus breed for non-parent bulls. His Dam sold as a sale feature of our 2003 cow sale to Dr. Long in MO and was one of the top Mc Cumber 124 Traveler 212 daughters we produced.



Lassie 688 of Mc Cumber

Dam of Lot 53

Lot 53 Mc CUMBER 5321 F DRCTN 6013

Calved: 3/2/2006

Reg. No. 15428718

G A R Precision 1680
C A Future Direction 5321
C A Miss Power Fix 308

Tehama Bando 155
9J9 G A R 856
S A F Power Fix
C A Lady Eight 1015
Traveler 124 G D A R
Miss Wix 365 of Mc Cumber
A A R New Trend
Lassie 252 of Mc Cumber

Mc Cumber 124 Traveler 212
Lassie 688 of Mc Cumber
Lassie 272 of Mc Cumber

Individual Record	
BW	95
WW	656
205	668
WR	100
ADG	2.99
YW	1096
365	1146
YR	100

Ultrasound Data	
IMF	4.11/101
REA	13.8/103
Fat	0.29/100

EPDs								Dam's Production		
BW	WW	Milk	YW	SC	IMF	REA	Fat	BW	WW	YW
2.6	34	30	66		.33	.55	0.0	4/104	4/111	3/111

A bigger framed son of Future Direction out of the co-top selling cow in our 2003 cow sale to Briens, in NE and ETR in KS. His full sister was the outstanding heifer calf purchased by Lindskov-Thiel through this year's female sale. His dam is a member of the Lassie cow family and is one of the most visually appealing females we have ever produced. Her beautiful front end is complimented by an abundance of rib and plenty of natural thickness. Along with her wonderful phenotype she has a NR of 4@111 and a %IMF of 5@116 and a REA of 5@106. 6013's ultrasound EPD's rank in the top 15% of the breed across the board.

Lot 54 Mc CUMBER EMBLAZON 6021

Calved: 3/2/2006

Reg. No. 15428718

DHD Traveler 6807
OCC Emblazon 854E
Dixie Erica of C H 1019

GDAR Traveler 71
Bemindful Maid DHD 0807
PBC 707 1M F0203
CSU Rito 4114
Blackcap Forever 485 GDAR
Rito 2100 G D A R
Miss Wix 235 of Mc Cumber

Rito 054 G D A R
Miss Wix 5168 of Mc Cumber
Miss Wix 756 of Mc Cumber

Individual Record	
BW	92
WW	668
205	656
WR	100
ADG	3.07
YW	1120
365	1147
YR	100

Ultrasound Data	
IMF	4.19/103
REA	14.1/105
Fat	0.37/128

EPDs								Dam's Production		
BW	WW	Milk	YW	SC	IMF	REA	Fat	BW	WW	YW
2.8	39	18	65		-.04	.19	.016	4/102	4/106	3/104

Selling 2/3 interest and full possession- Recommended for use on heifers- This moderate framed, heavy muscled son of Emblazon has the right frame, abundant depth and cow power to add maternal function and efficiency to even the top cow herd. To go along with this 6021 scanned a %IMF of 4.19 to ratio 103 and had a 14.1 REA to ratio 105 and recorded a REA/CWT of 1.24. His Rito 054 dam is a powerful, moderate framed, thick made member of the Miss Wix cow family. Her dam is a maternal sister to Mc Cumber Foundation 701 and the dam of Miss Wix 918 of Mc Cumber who generated over \$100,000 worth of progeny sales for Shady Brook in two production sales. **Expect 6021 to sire outstanding, highly efficient females and males with extra thickness and early growth.**



Miss Wix 5168 of Mc Cumber

Dam of Lot 54



OCC Emblazon 854E

Sire of Lot 54.

Lot 55 Mc CUMBER 6122 EQUATOR 6022

Calved: 2/27/2006

Reg. No. 15546905

Papa Equator 2928
Mc Cumber Equator 6122
Miss Wix 365 of Mc Cumber

Tehama Bando 155
Rosetta 421 of Mc Cumber
Rosetta 297 of Mc Cumber

Papa Power 096
Papa Envious Blackbird 8849
Shoshone 247 P J M
Miss Wix 294 of Mc Cumber
Band 234 of Ideal 3163
Tehama Blackcap G373
054 P J M 1438
Rosetta 405 of Mc Cumber

Individual Record	
BW	76
WW	508
205	512
WR	100
ADG	2.9
YW	934
365	976
YR	100

EPDs								Dam's Production		
BW	WW	Milk	YW	SC	IMF	REA	Fat	BW	WW	YW
2.6	35	25	66		-0.07	0.17	-0.07	3/97	3/106	3/109

Ultrasound Data	
IMF	3.62/89
REA	12/90
Fat	0.26/90

6022-6023-Selling 2/3 interest and full possession-Recommended for use on heifers- These thick made, but smooth shouldered flush brothers should be a sure bet on heifers. They are full brothers to Mc Cumber 6122 Equator 8113, who has sired sale toppers for us as well as producing daughter that are perfect uddered and highly productive. Their dam is an easy fleshing, excellent uddered daughter of Tehama Bando 155 and was a long time donor cow for us. These calving ease full brothers will sire highly productive females, as well as heavy muscled, high performance males.

Lot 56 Mc CUMBER 6122 EQUATOR 6023

Calved: 2/25/2006

Reg. No. 15546906

Papa Equator 2928
Mc Cumber Equator 6122
Miss Wix 365 of Mc Cumber

Tehama Bando 155
Rosetta 421 of Mc Cumber
Rosetta 297 of Mc Cumber

Papa Power 096
Papa Envious Blackbird 8849
Shoshone 247 P J M
Miss Wix 294 of Mc Cumber
Band 234 of Ideal 3163
Tehama Blackcap G373
054 P J M 1438
Rosetta 405 of Mc Cumber

Individual Record	
BW	84
WW	566
205	567
WR	100
ADG	2.57
YW	944
365	978
YR	100

EPDs								Dam's Production		
BW	WW	Milk	YW	SC	IMF	REA	Fat	BW	WW	YW
2.6	35	25	66		.02	.19	-.012	3/97	3/106	3/109

Ultrasound Data	
IMF	4.42/108
REA	12.2/91
Fat	0.21/72

Footnotes:



Mc Cumber Emblazon 6021



Rosetta 421 of Mc Cumber

Dam of Lots 55, 56, 57 and 58.



Mc CUMBER 7078 VRD 6025

Calved: 2/26/2006

Reg. No. 15552428

Connealy Dateline
Vermilion Dateline 7078
Vermilion Blackbird 5044

Tehama Bando 155
Rosetta 421 of Mc Cumber
Rosetta 297 of Mc Cumber

D H D Traveler 6807
Eila Eila of Conanga
Leachman Right Time
Vermilion Blackbird 3525
Band 234 of Ideal 3163
Tehama Blackcap G373
054 P J M 1438
Rosetta 405 of Mc Cumber

EPDs								Dam's Production		
BW	WW	Milk	YW	SC	IMF	REA	Fat	BW	WW	YW
3.5	45	22	84		.05	.26	-.012	3/97	3/106	3/109

Individual Record			
BW	90		
WW	634		
205	637		
WR	100		
ADG	3.05		
YW	1082		
365	1125		
YR	100		
Ultrasound Data			
IMF	4.73/116		
REA	12.8/96		
Fat	0.27/93		

6025-6026-Selling 2/3 interest and full possession- These maternal brothers to lots 6022 and 6023 as well as, Mc Cumber 6122 Equator 8113 are **expressively muscled and some of the best footed, most structurally correct sons of VRD that we have produced.** 6025 has extra pop to his top and is a big hipped, thick butted herd sire candidate. Rosetta 421 of Mc Cumber is an outstanding member of the Rosetta cow family. The Rosetta cow family is recognized around the country for the outstanding progeny they produce, as well as generating profit for their owners.



Mc CUMBER 7078 VRD 6026

Calved: 2/23/2006

Reg. No. 15552429

Connealy Dateline
Vermilion Dateline 7078
Vermilion Blackbird 5044

Tehama Bando 155
Rosetta 421 of Mc Cumber
Rosetta 297 of Mc Cumber

D H D Traveler 6807
Eila Eila of Conanga
Leachman Right Time
Vermilion Blackbird 3525
Band 234 of Ideal 3163
Tehama Blackcap G373
054 P J M 1438
Rosetta 405 of Mc Cumber

EPDs								Dam's Production		
BW	WW	Milk	YW	SC	IMF	REA	Fat	BW	WW	YW
3.5	45	22	84		-.06	.15	-.011	3/97	3/106	3/109

Individual Record			
BW	88		
WW	576		
205	573		
WR	100		
ADG	3.12		
YW	1034		
365	1072		
YR	100		
Ultrasound Data			
IMF	3.78/93		
REA	11.8/88		
Fat	0.24/83		



Vermilion Dateline 7078

Sire of Lots 57 and 58.



59

Mc CUMBER 004 TRAVELER 6030

Calved: 2/23/2006

Reg. No. 15552429

Sitz Traveler 8180
S A V 8180 Traveler 004
Boyd Forever Lady 8003

BT New Trend 172K
Lassie 4194 of Mc Cumber
Lassie 0171 of Mc Cumber

G D A R Traveler 71
Sitz everelda Entense 1137
A A R New Trend
S V F Forever Lady 57D
A A R New Trend
BT Everelda Entense 57D
Mc Cumber Foundation 701
Lassie 272 of Mc Cumber

Individual Record	
BW	81
WW	648
205	654
WR	96
ADG	3.72
YW	1176
365	1249
YR	100

EPDs								Dam's Production		
BW	WW	Milk	YW	SC	IMF	REA	Fat	BW	WW	YW
2.4	39	29	79		-.05	.06	-.008	1/96	1/96	1/100

Recommended for use on heifers- This long, smooth made son of 004 should work well on heifers, as well as sire top-notch replacement females. His dam is a long bodied, feminine fronted female, with an outstanding udder.



Full sister to Dam of Lot 59.



60

Mc CUMBER 004 TRAVELER 6031

Calved: 2/23/2006

Reg. No. 15552429

Sitz Traveler 8180
S A V 8180 Traveler 004
Boyd Forever Lady 8003

Vermilion Dateline 7078
Erianna 487 of Mc Cumber
Erianna 825 of Mc Cumber

G D A R Traveler 71
Sitz everelda Entense 1137
A A R New Trend
S V F Forever Lady 57D
Connealy Dateline
Vermilion Blackbird 5044
Circle Oak Lucys Boy 625
Erianna 8148 of Mc Cumber

Individual Record	
BW	86
WW	738
205	737
WR	109
ADG	3.78
YW	1275
365	1342
YR	108

EPDs								Dam's Production		
BW	WW	Milk	YW	SC	IMF	REA	Fat	BW	WW	YW
3.6	53	23	96		-.01	.45	.01	1/102	1/109	1/108

Selling 2/3 interest and full possession- This outstanding herd sire prospect performed very well at all measures. 6031 earned a 205 day weight of 737 lbs. to ratio 109 as his dam's first calf. He gained 3.78 lbs./day and recorded a 365 day weight of 1342 lbs. to ratio 108. To go along with this outstanding performance he recorded a %IMF of 3.76 to ratio 107 and had a REA of 14.2 to ratio 111. His dam is a member of the same cow family that produced the elite herd sire prospect selling as lot 6120. She has a nearly perfect udder and maintained her condition while raising this big strapping bull calf. **This attractive, well balanced son of 004 is heavy muscled and deep bodied.**



Mc Cumber 004 Traveler 6031



Mc Cumber 9802 Valubull 6032

Lot 61 Mc CUMBER 9802 VALUBULL 6032

Calved: 2/23/2006

Reg. No. 15552429

Sitz Value 7097
Sitz Triangle S Valubull
Sitz Barbaramere Nell 1530

Sitz Traveler 6802
Sitz Eisa evergreen 791
D H D Traveler 6807
Sitz Barbaramere Nell 2124
Mc Cumber 6122 Equator 8113
B Pride 7159 of Mc Cumber
Mr Wix of Mc Cumber 204
Blackcap 306 of Mc Cumber

EPDs								Dam's Production		
BW	WW	Milk	YW	SC	IMF	REA	Fat	BW	WW	YW
1.6	43	20	78		.11	.10	.021	1/100	1/103	1/106

Individual Record	
BW	84
WW	688
205	701
WR	103
ADG	3.93
YW	1246
365	1330
YR	106

Ultrasound Data	
IMF	3.99/114
REA	12.6/98
Fat	0.43/130

Selling 2/3 interest and full possession-Recommended for use on heifers- This calving ease herd sire prospect earned a 205 day weight of 701 lbs. to ratio 103, as his dam's first calf. He gained 3.93 lbs./day and recorded a 365 day weight of 1330 lbs. to ratio 106. 6032 is a wide based, moderate framed, high volume son of Sitz Valubull. **He combines balanced, real world EPD's with an outstanding phenotype.** His dam is an easy fleshing, excellent uddered daughter of our 2002 high selling bull, Mc Cumber 8113 Equator 1190. The Valubull sire group are easy calving, commercial oriented bulls with natural thickness, excellent depth of body and a super structure all on a moderate frame.

Lot 62 Mc CUMBER 419 EQUATOR 6033

Calved: 2/23/2006

Reg. No. 15552429

Mc Cumber 7111 Total Value
Mc Cumber Total Value 449
Miss Wix 7007 of Mc Cumber

Vermilion Dateline 7078
Miss Wix 7111 of Mc Cumber
Mc Cumber 124 Traveler 212
Miss Wix 030 of Mc Cumber
Leachman Right Time
S Elcona 076
Leachman Right Time
Lassie 272 of Mc Cumber

EPDs								Dam's Production		
BW	WW	Milk	YW	SC	IMF	REA	Fat	BW	WW	YW
2.6	30	23	57		-.07	.03	.012	1/97	1/93	1/87

Individual Record	
BW	82
WW	612
205	634
WR	93
ADG	2.87
YW	1020
365	1093
YR	87

Ultrasound Data	
IMF	2.59/74
REA	11.4/89
Fat	0.29/88

Recommended for use on heifers- This super stylish, well made bull is smooth shouldered and very correct on his feet and legs. His dam is a moderate framed, easy fleshing, perfect uddered granddaughter of Leachman Right Time. She is also a member of the herd bull producing Lassie cow family.



Miss Wix 7111 of Mc Cumber

Paternal great granddam of Lot 62.

Lot 63

Mc CUMBER 455 NEW DAY 6034

Calved: 2/23/2006

Reg. No. 15552429

Boyd New Day 8005
Mc Cumber 8005 New Day 455
Enchantress 086 of Mc Cumber

AAR New Trend
S V F Forever Lady 57D
Sitz S L S Rainmaker 7596
Enchantress 816 of Mc Cumber
G A R Precision 1680
W C C Blackcapa C9
Rito 054 G D A R
Miss Wix 365 of Mc Cumber

Individual Record	
BW	89
WW	536
205	669
WR	99
ADG	3.51
YW	1034
365	1231
YR	99

EPDs								Dam's Production		
BW	WW	Milk	YW	SC	IMF	REA	Fat	BW	WW	YW
2.9	33	22	71		.07	.73	.002	1/105	1/99	1/99

Ultrasound Data	
IMF	3.94/113
REA	13.8/108
Fat	0.35/106

Recommended for use on heifers- This Boyd New Day grandson combines style and balance, with additional shape to his top and rear quarter. 6034 scanned a %IMF of 3.94 to ratio 113 and had a REA of 13.8 to ratio 108. His REA EPD of .73 ranks in the top 2% of the breed for non-parent Angus Bulls. His dam has a REA EPD of .90 which ranks in the very top 1% of the Angus breed. This end of March bull should not be overlooked.



Miss Wix 5007 of Mc Cumber

Maternal granddam of Lot 63.

Lot 64

Mc CUMBER VALUBULL 6040

Calved: 2/23/2006

Reg. No. 15552429

Sitz Value 7097
Sitz Triangle S Valubull
Sitz Barbaramere Nell 1590

Sitz Traveler 6802
Sitz Eisa Evergreen 791
D H D Traveler 6807
Sitz Barbaramere Nell 2124
Leachman Right Time
Sitz Everelda Entense 1137
BT New Trend 172 K
Rosetta 648 of Mc Cumber

Individual Record	
BW	78
WW	714
205	689
WR	109
ADG	2.84
YW	1060
365	1143
YR	98

EPDs								Dam's Production		
BW	WW	Milk	YW	SC	IMF	REA	Fat	BW	WW	YW
0.5	51	21	83		0.0	.27	.006	1/91	1/109	1/98

Ultrasound Data	
IMF	4.31/106
REA	10.7/96
Fat	0.21/78

Recommended for use on heifers- After starting out at only 78 lbs. 6040 weaned off at 714 lbs. to ratio 109 as his dam's first calf. His curve-bending EPD profile is as good as any in the sale. 6040's \$weaning index of \$32.09 ranks in the top 1% of non-parent Angus bull in the breed. His dam is a powerfully built, easy fleshing, good uddered daughter of Pine Creek Right Time 1147 who descends from the Rosetta cow family.

Lot 65

Mc CUMBER VALUBULL 6041

Calved: 2/23/2006

Reg. No. 15552429

Sitz Value 7097
Sitz Triangle S Valubull
Sitz Barbaramere Nell 1590

Sitz Traveler 6802
Sitz Eisa Evergreen 791
D H D Traveler 6807
Sitz Barbaramere Nell 2124
Connealy Dateline
Vermilion Blackbird 5044
Mc Cumber Ferdinand 896
Blackcap 339 of Mc Cumber

Individual Record	
BW	92
WW	606
205	609
WR	97
ADG	3.51
YW	1034
365	1171
YR	100

EPDs								Dam's Production		
BW	WW	Milk	YW	SC	IMF	REA	Fat	BW	WW	YW
3.3	47	19	85		-.07	.10	.006	1/106	1/97	1/100

Ultrasound Data	
IMF	3.27/81
REA	11.3/102
Fat	0.3/111

This bigger framed son of Valubull is long, stout and correct on his feet and legs. His dam is a massive, super uddered daughter of VRD and was produced from a pathfinder.

Lot 66 Mc CUMBER 9802 VALUBULL 6043

Calved: 2/23/2006

Reg. No. 15552429

Sitz Value 7097
Sitz Triangle S Valubull
Sitz Barbaramere Nell 1590

S Right Time 206
Enchantress 4181 of Mc Cumber
Enchantress 286 of Mc Cumber

Sitz Traveler 6802
Sitz Eisa Evergreen 791
D H D Traveler 6807
Sitz Barbaramere Nell 2124
Leachman Right Time
S Elcona 076
Mc Cumber Mr Wix 7104
Enchantress 086 of Mc Cumber

Individual Record	
BW	86
WW	574
205	634
WR	101
ADG	3.49
YW	1000
365	1192
YR	102

Ultrasound Data	
IMF	3.83/95
REA	11.5/104
Fat	0.29/107

EPDs								Dam's Production		
BW	WW	Milk	YW	SC	IMF	REA	Fat	BW	WW	YW
2	33	24	75		.10	.31	.019	1/104	1/93	1/100

Recommended for use on heifers- This March born New Day grandson is an attractive, well balanced bull, with a good hip and hind leg. His dam is an easy fleshing, super uddered Leachman Right Time grand daughter. He earned weaning and yearling ratios of 101 and 102 respectively.

Lot 67 Mc CUMBER 9802 VALUBULL 6100

Calved: 2/3/2006

Reg. No. 15429663

Sitz Value 7097
Sitz Triangle S Valubull
Sitz Barbaramere Nell 1590

Boyd New Day 8005
Rosetta 494 of Mc Cumber
Rosetta 9147 of Mc Cumber

Sitz Traveler 6802
Sitz Eisa Evergreen 791
D H D Traveler 6807
Sitz Barbaramere Nell 2124
A A R New Trend
S V F Forever Lady 57D
Matthew of Mc Cumber HC 6365
Rosetta 601 of Mc Cumber

Individual Record	
BW	84
WW	726
205	758
WR	116
ADG	3.94
YW	1305
365	1388
YR	114

Ultrasound Data	
IMF	6.11/157
REA	13.3/103
Fat	0.35/106

EPDs								Dam's Production		
BW	WW	Milk	YW	SC	IMF	REA	Fat	BW	WW	YW
1.2	48	24	89		.26	.30	.009	1/99	1/116	1/114



Sire of Lot 67.

Selling 2/3 interest and full possession-Recommended for use on heifers- An outcross, calving ease herd bull prospect with big-time performance, and the #1 IMF score of the auction. He scanned a 6.11 %IMF to ratio 157 and a REA of 13.3 to ratio 103. 6100 is a big chested bull with length, extra shape to his top, super foot and leg structure and excellent scrotal development. His curve-bending EPD profile is complemented with %IMF EPD of .26, and REA EPD of .30. Along with this he earned a 205 day weight of 758 lbs. to ratio 116 as his dam's first calf. He gained nearly 4.00 lbs/day and weighed off test at 1305 lbs. with a 365 day weight of 1388 lbs. to ratio 114. His dam is the best New Day daughter on the ranch and is a member of the noted Rosetta cow family. Rosetta 494 of Mc Cumber is moderate framed, easy fleshing, big bodied, and thick made. His powerful dam descends from the same branch of the Rosetta cow family that produced Mc Cumber 6122 Equator 8113, and Mc Cumber Stretch 604. **6100's unique pedigree, superior performance, excellent ultrasound, and maternal heritage makes him an exciting herd sire prospect.**





Mc Cumber 004 Traveler 6103

Lot 68 Mc CUMBER 004 TRAVELER 6103

Calved: 2/3/2006

Reg. No. 15428728

Sitz Traveler 8180
S A V 8180 Traveler 004
Boyd Forever Lady 8003

Mc Cumber Foundation 701
Lassie 913 of Mc Cumber
Lassie 587 of Mc Cumber

G D A R Traveler 71
Sitz Everelda Entense 1137
A A R New Trend
S V F Forever Lady 57D
Mc Cumber 124 Traveler 212
Miss Wix 235 of Mc Cumber
Papa Equator 2928
Lassie 648 of Mc Cumber

Individual Record	
BW	93
WW	726
205	680
WR	104
ADG	4.21
YW	1345
365	1354
YR	111

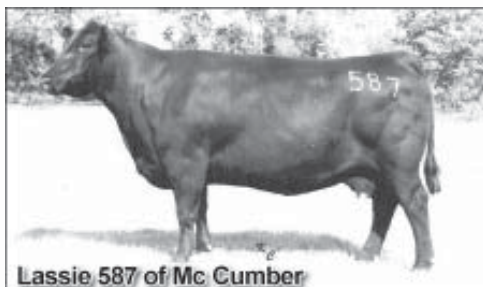
Ultrasound Data	
IMF	3.47/89
REA	13.3/103
Fat	0.34/103

EPDs								Dam's Production		
BW	WW	Milk	YW	SC	IMF	REA	Fat	BW	WW	YW
3.8	46	25	93		-.14	.28	.017	6/102	6/104	6/106

Selling 2/3 interest and full possession- Another herd sire prospect created by the 004 X Mc Cumber Foundation 701 combination. This combination has worked extremely well. The females are moderate framed, thick made and have the beef cow look. The males are high performance bulls with a tremendous amount of rib, natural thickness and scrotal development. **6103 is a big, stout, beef bull with top-notch performance and a tremendous dam.** He is one of the high gaining bulls on test at 4.21 lbs./day and weighed off test at 1345 lbs. with a 365 day weight of 1354 to ratio 111. His dam is a moderate framed, deep bodied, highly productive member of the herd bull producing Lassie cow family.

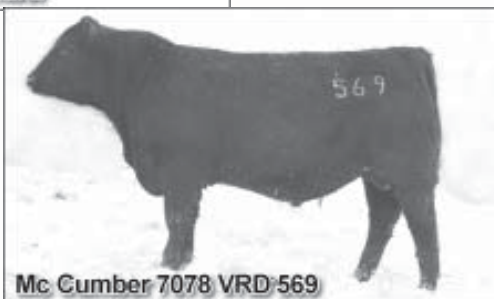
Lassie 913- WWR-6@104, YR- 6@ 106
Lassie 587-WWR -4@114, YR- 4@106
Lassie 648-WWR-10@106, YR-9@106
Lassie 252-WWR-10@103, YR-10@102

Her five progeny that have sold at public auction have commanded an average of \$4000. They have sold to Beartooth Ranch MT, Rick Slabaugh ND, Donnie Clark GA, Joe Bohl ND and Larry Kraft ND.



Lassie 587 of Mc Cumber

Maternal granddam of Lot 68.



Mc Cumber 7078 VRD-569

Maternal brother of Lot 68.



Mc Cumber 4X13 Extra 6105

Lot 69 Mc CUMBER 4X13 EXTRA 6105

Calved: 2/3/2006

Reg. No. 15428728

N Bar Emulation EXT
Sinclair Extra 4X13
N Bar Lady Ida S C C 2P37

Twin Valley Precision E161
Miss Wix 4130 of Mc Cumber
Miss Wix 5007 of Mc Cumber

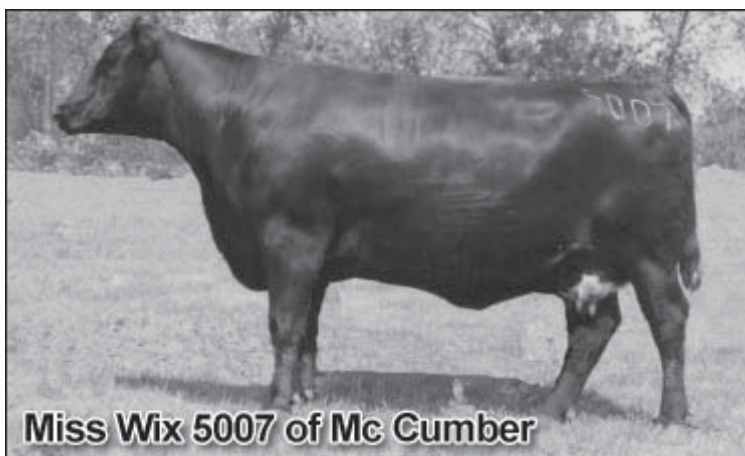
Emulation N Bar 5522
N Bar Primrose 2424
N Bar Prime Time D806
N Bar Lady Ida F1080
G A R Precision 1680
W C C Blackcap C9
Rito 054 G D A R
Miss Wix 365 of Mc Cumber

Individual Record	
BW	69
WW	685
205	721
WR	111
ADG	3.71
YW	1230
365	1315
YR	108

Ultrasound Data	
IMF	5.81/150
REA	14.7/114
Fat	.42/127

EPDs								Dam's Production		
BW	WW	Milk	YW	SC	IMF	REA	Fat	BW	WW	YW
-0.7	41	23	79		.41	.65	.029	1/82	1/111	1/108

Selling 2/3 interest and full possession-Recommended for use on heifers- This son of Sinclair Extra 4X13 covers all the bases. From performance and elite carcass EPD's to reduced mature size and highly efficient roughage converting females. 6105 started at only 69 lbs., but went on to earn a 205 day weight of 721 lbs. to ratio 111 as his dam's first calf. He also performed on feed extremely well and recorded a 365 day weight of 1315 lbs. to ratio 108. His combination of %IMF and REA is the best in the entire auction, with a %IMF score of 5.81 to ratio 150 and a REA of 14.7 to ratio 114. His ultrasound EPDs for %IMF of .41 and REA of .65 rank in the top 10% of the breed for non-parent Angus bulls. His combination of \$Weaning index of \$28.26 and \$Beef index of \$43.36 rank in the top 10% of the Angus breed. Along with his tremendous performance and top of the line ultrasound EPDs his phenotype is outstanding as well. 6105 is nearly flawlessly structured, super smooth, deep bodied and big topped. He is a moderate framed bull that moves out on his feet and legs extremely well and possesses that true Angus breed character. His dam is a member of the Miss Wix cow family and has one of the highest REA EPDs in the Angus breed at .82, which ranks her in the very top 1% of the breed for current dams. **A super complete herd sire prospect that has done everything well.**



Miss Wix 5007 of Mc Cumber

Maternal granddam of Lot 69.

Lot 70

Mc CUMBER 449 T VALUE 6109

Calved: 2/5/2006

Reg. No. 15428733

MC Cumber 7111 Total Value
 MC Cumber Total Value 449
 Miss Wix 7007 of Mc Cumber
 Leachman Right Time
 Lovely Lady 341 of Mc Cumber
 Lovely Lady 721 of Mc Cumber

Vermilion Dateline 7078
 Miss Wix 7111 of Mc Cumber
 Mc Cumber 124 Traveler 212
 Miss Wix 030 of Mc Cumber
 N Bar Emulation EXT
 Leachman Erica 0025
 Mr Wix of Mc Cumber 204
 Lovely Lady 5149 Mc Cumber

Individual Record	
BW	84
WW	606
205	613
WR	94
ADG	4.26
YW	1232
365	1295
YR	106

Ultrasound Data	
IMF	2.73/70
REA	11.6/90
Fat	0.39/118

EPDs								Dam's Production		
BW	WW	Milk	YW	SC	IMF	REA	Fat	BW	WW	YW
1.2	33	24	71		-.06	.01	.033	2/99	2/96	2/104

Recommended for use on heifers- This calving ease son of Mc Cumber Total Value 449 really went to town on feed. He gained 4.26 lbs./day and recorded a 365 day weight of 1295 lbs. to ratio 106. His beautiful Right Time dam is pretty headed and feminine. She combines this with an abundance of volume and capacity, a near perfect udder and plenty of natural thickness. 6109 has developed into a long bodied, high volume, well made bull.

Lot 71

Mc CUMBER 4X13 EXTRA 6112

Calved: 2/5/2006

Reg. No. 15428736

N Bar Emulation EXT
 Sinclair Extra 4X13
 N Bar Lady Ida S C C 2P37

Emulation N Bar 5522
 N Bar Primrose 2424
 N Bar Prime Time D806
 N Bar Lady Ida F1080
 A A R New Trend
 Miss Wix 705 of Mc Cumber
 Circle Oak Lucys Boy 625
 Blue Ribbon 641 of Mc Cumber

Individual Record	
BW	74
WW	606
205	649
WR	100
ADG	3.18
YW	1074
365	1158
YR	95

Ultrasound Data	
IMF	4.48/115
REA	12/93
Fat	0.34/103

EPDs								Dam's Production		
BW	WW	Milk	YW	SC	IMF	REA	Fat	BW	WW	YW
0.2	27	23	52		.22	.06	.014	1/88	1/100	1/95

Recommended for use on heifers- A well balanced, moderate framed, excellent structured, sure fire heifer bull by Sinclair Extra 4X13. This 5 frame calving ease sire is out of a moderate framed, easy fleshing daughter of Mc Cumber New Trend 1206. 6112 is designed to create moderate framed, easy fleshing females, that will reproduce and thrive in a low input environment.

Lot 72

Mc CUMBER 8702 DATELINE 6115

Calved: 2/6/2006

Reg. No. 15431633

Vermilion Dateline 7078
 Sitz Tradition RLS 8702
 R L S Eisa Evergreen 5018

Connealy Dateline
 Vermilion Blackbird 5044
 Sitz Alliance 6595
 R L S Eisa Evergreen 1078
 Mc Cumber 124 Traveler 212
 Miss Wix 235 of Mc Cumber
 Rito 054 G D A R
 Miss Wix 365 of Mc Cumber

Individual Record	
BW	100
WW	666
205	630
WR	97
ADG	4.01
YW	1255
365	1272
YR	105

Ultrasound Data	
IMF	3.15/81
REA	13.2/102
Fat	0.29/88

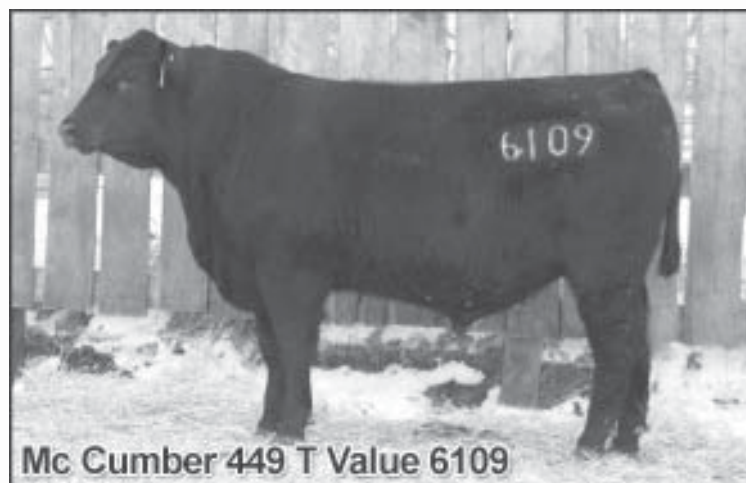
EPDs								Dam's Production		
BW	WW	Milk	YW	SC	IMF	REA	Fat	BW	WW	YW
4.9	38	22	74		-.08	.46	.019	4/106	4/105	4/107

This rangy son of Sitz Tradition was a 4.00 lb a day gainer. He is smooth made and super long.



McCumber Angus Ranch

Find us online: www.mccumberangus.com



Mc Cumber 449 T Value 6109



Mc Cumber Foundation 701

Flush brother to dam of Lot 73.

Lot 73

Mc CUMBER 8702 DATELINE 6118

Calved: 2/7/2006

Reg. No. 15431634

Vermilion Dateline 7078
 Sitz Tradition RLS 8702
 R L S Eisa Evergreen 5018

Connealy Dateline
 Vermilion Blackbird 5044
 Sitz Alliance 6595
 R L S Eisa Evergreen 1078
 Traveler 124 G D A R
 Miss Wix 365 of Mc Cumber
 Shoshone Viking GD60
 Miss Wix 117 of Mc Cumber

Individual Record	
BW	86
WW	696
205	659
WR	101
ADG	3.05
YW	1144
365	1147
YR	94

Mc Cumber 124 Traveler 212
 Miss Wix 9026 of Mc Cumber
 Miss Wix 235 of Mc Cumber

EPDs								Dam's Production		
BW	WW	Milk	YW	SC	IMF	REA	Fat	BW	WW	YW
3.1	42	20	67		-.13	.34	.019	6/99	6/101	6/97

Ultrasound Data	
IMF	2.68/69
REA	13/101
Fat	0.33/100

Selling 2/3 interest and full possession- This thick, meaty son of Sitz Tradition is moderated framed, deep bodied and has a lot of muscle expression to his top and rear quarter. His dam is a full sister to Mc Cumber Foundation 701. Miss Wix 9026 of Mc Cumber is a moderate framed, easy fleshing female with a perfect udder and outstanding feet and legs. She has produced several graduates of our bull sale with sons selling to Brain Leonard and Lonnie Anderson both of Rolette and Bert and Jeff Kuntz of Townner. Miss Wix 9026 sold to Brad Gilbertson of Sherwood ND through our cow sale last fall. The production and stay ability of the cows behind her have been outstanding.

Miss Wix 9026-WWR 6@101,
 YWR 6@97
 Miss Wix 235-WWR 10@104,
 YWR 9@104
 Miss Wix 117- WWR 10@119,
 YWR 9@111 (pathfinder)

This muscle machine will certainly make outstanding females and heavy muscled males.



Miss Wix 705 of Mc Cumber

Flush sister to dam of Lot 73.



Lot 74

MC CUMBER 4X13 EXTRA 6119

Calved: 2/7/2006

Reg. No. 15428741

N Bar Emulation EXT
Sinclair Extra 4X13
N Bar Lady Ida S C C 2P37

Emulation N Bar 5522
N Bar Primrose 2424
N Bar Prime Time D806
N Bar Lady Ida F1080
Connealy Dateline
Vermilion Blackbird 5044
Mc Cumber 6122 Equator 8113
Lovely Lady 721 of Mc Cumber

Vermilion Dateline 7078
Lovely Lady 482 of Mc Cumber
Lovely Lady 0208 Mc Cumber

Individual Record	
BW	77
WW	742
205	780
WR	120
ADG	3.76
YW	1295
365	1382
YR	114
Ultrasound Data	
IMF	4.62/119
REA	15.1/117
Fat	0.39/118

EPDs								Dam's Production		
BW	WW	Milk	YW	SC	IMF	REA	Fat	BW	WW	YW
1.3	54	24	97		.21	.56	.020	1/91	1/120	1/114

Selling 2/3 interest and full possession-Recommended for use on heifers- This high-powered, calving ease son of 4X13 amazed us at every measure. 6119 earned a 205 day weight of 780 lbs. to ratio 120 as his dam's first calf. He gained extremely well and earned a 365 day weight of 1382 lbs. to ratio 114. Along with his tremendous performance he recorded a %IMF of 4.62 to ratio 119 and scanned the third largest REA at 15.1 to ratio 117. **He is wide based, deep bodied, excellent on his feet and legs and packs a tremendous amount of meat on his 5.5 frame.** This outstanding herd sire prospect has bull stud numbers and performance, combined with the design of a profit oriented, cow maker supreme. His dam is a well made, easy fleshing, perfect uddered daughter of VRD with EPDs that rank in the very top 1% of the breed for WW and YW. We have a tremendous amount of confidence in 4X13 and his ability to sire cattle that will meet the commercial men and women's approval with cattle that have early growth, plenty of feedlot performance, superior carcasses and outstanding profit oriented females. **This is a tremendous herd sire prospect from the very first calf crop of 4X13.**

Maternal sister to
dam of Lot 74.



Sire of Lot 74.





Mc Cumber 004 Traveler 6120

Lot 75 Mc CUMBER 004 TRAVELER 6120

Calved: 2/8/2006

Reg. No. 15428743

Sitz Traveler 8180
S A V 8180 Traveler 004
Boyd Forever Lady 8003

Mc Cumber 6122 Equator 8113
Erianna 2206 of Mc Cumber
Erianna 880 of Mc Cumber

G D A R Traveler 71
Sitz Everelda Entense 1137
A A R New Trend
S V F Forever Lady 57D
Mc Cumber Equator 6122
Rosetta 421 of Mc Cumber
Mc Cumber 124 Traveler 212
Erianna 250 of Mc Cumber

Individual Record	
BW	94
WW	810
205	786
WR	121
ADG	4.05
YW	1405
365	1434
YR	118

Ultrasound Data	
IMF	4.56/118
REA	14/109
Fat	0.44/133

EPDs								Dam's Production			
BW	WW	Milk	YW	SC	IMF	REA	Fat	BW	WW	YW	
3.5	56	29	103		.12	.42	.022	3/106	3/112	3/114	

Selling 1/2 interest and full possession- Mc Cumber 004 Traveler 6120 is an elite herd bull prospect with the pedigree, performance, carcass, disposition and phenotype to be considered one of the top bulls to sell anywhere in the country this year. This powerful beef bull possesses a big scrotum, abundant thickness, massive volume, muscle and pounds with an EPD profile to rival any bull to sell this year. This 810 lb. weaning weight bull earned a 205 day weight of 786 lbs. to ratio 121. He gained 4.05 lbs./day and weighed off test at 1405 lbs. with a 365 day weight of 1434 lbs. to ratio 118. His ultrasound did not disappoint with a %IMF of 4.56 to ratio 118 and a REA of 14.2 to ratio 109. His dam is an elite pathfinder daughter of Mc Cumber 6122 Equator 8113 with a nursing ratio of 3@112 which is the highest nursing ratio of any cow on the ranch with multiple calves. Erianna 2206 of Mc Cumber is highly productive, easy fleshing, extremely fertile and has a wonderful udder with small well placed teats and a level, well attached udder. Not only is her nursing ratio extremely good, but she has a YWR of 3@114, %IMF 3@117 and REA 3@100. She has settled AI every year and is currently nursing an exceptional January born Mc Cumber Tradition 383 heifer calf. 6120 offers higher ultrasound EPDs than his sire and on the bottom side of his pedigree he is unique in the fact that there is no EXT, 5175, New Design, or Precision. 6120 will be collected and used back on our cows. **There are a lot of 004 sons out there, but in our opinion 6120 is one of the best. He is worth the trip to Rolette to see and we would love to show you his mother.**



Sire of Lot 75.

Lot 76 Mc CUMBER 9802 VALUBULL 6122

Calved: 2/9/2006

Reg. No. 15429665

Sitz Value 7097
Sitz Triangle S Valubull
Sitz Barbaramere Nell 1590

Boyd New Day 8005
Gale 447 of Mc Cumber
Gale 1124 of Mc Cumber

Sitz Traveler 6802
Sitz Eisa Evergreen 791
D H D Traveler 6807
Sitz Barbaramere Nell 2124
A A R New Trend
S V F Forever Lady 57D
Mc Cumber Powertrain HC 1025
Gale 662 of Mc Cumber

EPDs								Dam's Production			
BW	WW	Milk	YW	SC	IMF	REA	Fat	BW	WW	YW	
2.1	51	23	85		.13	.55	.011	1/96	1/111	1/102	

Individual Record	
BW	82
WW	674
205	720
WR	111
ADG	3.28
YW	1156
365	1245
YR	102

Ultrasound Data	
IMF	4.34/112
REA	14/109
Fat	0.29/88

Selling 2/3 interest and full possession-Recommended for use on heifers- Another herd sire prospect from the mating of Valubull to a New Day daughter. 6122 earned a 205 day weight of 720 lbs. to ratio 111 as his dam's first calf. Along with this he scanned a %IMF of 4.34 to ratio 112 and a REA of 14 to ratio 109. His big bodied, perfect uddered dam set an all-time REA scan of 16.0 as a yearling heifer, and has a REA EPD of .94 to rank in the very elite of the breed for this trait. She also possesses a WW EPD of 56 which ranks in the top 1%, and a YW EPD of 94 which ranks in the top 2% of the breed for current dams. She descends from a very productive and extremely fertile cow family, with 7 cows on the bottom side of the pedigree achieving pathfinder status out of 8 generations. Her maternal brother is the 691 bull selling through this sale.



Lot 77 Mc CUMBER 419 EQUATOR 6123

Calved: 2/9/2006

Reg. No. 15499473

Mc Cumber Equator 6122
MC Cumber 6122 Equator 419
Rosetta 162 of Mc Cumber

Papa Equator 2928
Miss Wix 365 of Mc Cumber
Mc Cumber Foundation 701
Rosetta 601 of Mc Cumber
Band 234 of Ideal 3163
Tehama Blackcap G373
Shoshone 247 P J M
Miss Wix 294 of Mc Cumber

Individual Record	
BW	92
WW	672
205	658
WR	101
ADG	3.69
YW	1214
365	1248
YR	103

Ultrasound Data	
IMF	4.07/105
REA	13/101
Fat	0.25/76

EPDs								Dam's Production		
BW	WW	Milk	YW	SC	IMF	REA	Fat	BW	WW	YW
2.3	34	24	66		.01	.14	-.006	3/96	3/99	3/101

Selling 2/3 interest and full possession-Recommended for use on heifers- A meat wagon by Mc Cumber 6122 Equator 419 and out of a direct daughter of Miss Wix 365 of Mc Cumber. 6123 is a moderate framed beef bull, with a big top, wide hip, and expressive rear quarter. He possesses a tremendous amount of depth, and is very good on his feet and legs. This bull ratioed above average for every trait, and phenotypically is the type of bull to thrive under any management type.

Lot 78 Mc CUMBER 004 TRAVELER 6124

Calved: 2/9/2006

Reg. No. 15428745

Sitz Traveler 8180
S A V 8180 Traveler 004
Boyd Forever Lady 8003

G D A R Traveler 71
Sitz Everelda Entense 1137
A A R New Trend
S V F Forever Lady 57D
Mc Cumber Equator 6122
Rosetta 421 of Mc Cumber
Mr Wix of Mc Cumber 204
Lovely Lady 5149 Mc Cumber

Individual Record	
BW	93
WW	624
205	595
WR	91
ADG	4.29
YW	1255
365	1281
YR	105

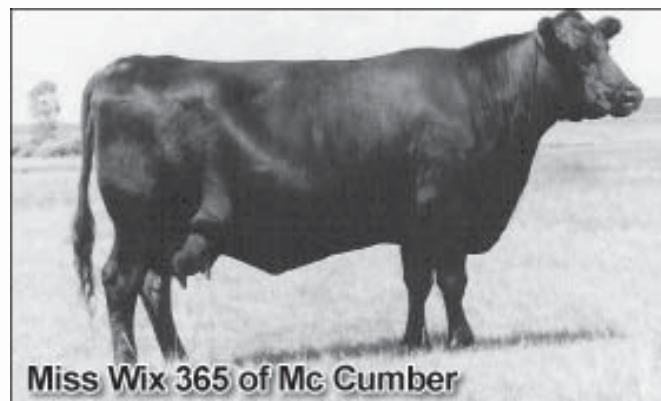
Ultrasound Data	
IMF	3.98/103
REA	14.2/110
Fat	0.41/124

EPDs								Dam's Production		
BW	WW	Milk	YW	SC	IMF	REA	Fat	BW	WW	YW
3.4	42	24	91		-.03	.45	.014	5/102	5/98	5/105

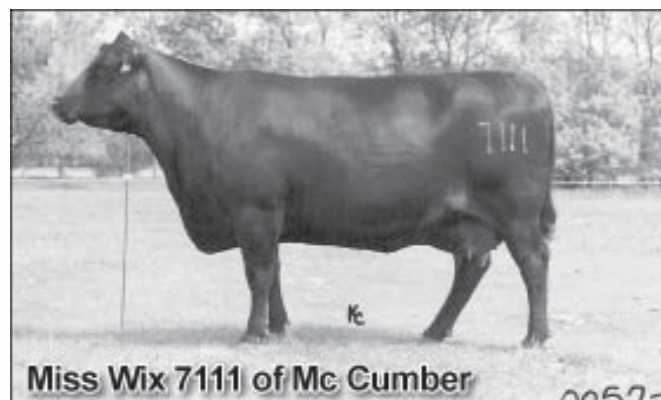
One of the high gaining bulls on test at 4.29 lbs./day and scanned a REA of 14.2 to ratio 110. He is a deep bodied, heavy muscled son of 004 with big testicles, and excellent structure. His dam is a super uddered daughter of 8113, and she is the grand dam to the herd bull selling as 6119. She also produced a \$3000 bred heifer through our 2006 Cow sale to TNT Angus of Rock Lake ND.



Sire of Lots 78 and 80.



Maternal granddam of Lot 77.



Paternal great granddam of Lot 79.

Lot 79 Mc CUMBER 449 T VALUE 6129

Calved: 2/11/2006

Reg. No. 15428748

MC Cumber 7111 Total Value
MC Cumber Total Value 449
Miss Wix 7007 of Mc Cumber

Vermilion Dateline 7078
Miss Wix 7111 of Mc Cumber
Mc Cumber 124 Traveler 212
Miss Wix 030 of Mc Cumber
G A R Precision 1680
Stone Gate Jessie
Mc Cumber 124 Traveler 212
Miss Wix 0105 of Mc Cumber

Individual Record	
BW	90
WW	580
205	598
WR	92
ADG	3.7
YW	1124
365	1190
YR	98

White Oak Precise 6002
Miss Wix 3124 of Mc Cumber
Miss Wix 6101 of Mc Cumber

EPDs								Dam's Production		
BW	WW	Milk	YW	SC	IMF	REA	Fat	BW	WW	YW
2.4	30	27	60		.07	.46	.017	2/105	2/100	2/101

Ultrasound Data	
IMF	3.89/100
REA	13.9/108
Fat	0.31/94

Recommended for use on heifers- This good looking, calving ease bull is long bodied, smooth shouldered, and heavy muscled. His dam is a member of a high producing cow family who produce top calves year in and year out. This heifer bull also scanned a big REA of 13.9 to ratio 108.

Lot 80 Mc CUMBER 004 TRAVELER 6130

Calved: 2/12/2006

Reg. No. 15428749

Sitz Traveler 8180
S A V 8180 Traveler 004
Boyd Forever Lady 8003

G D A R Traveler 71
Sitz Everelda Entense 1137
A A R New Trend
S V F Forever Lady 57D
A A R New Trend
BT Everelda Entense 57D
G D A R Gold Nugget 766
B Pride 483 of Mc Cumber

Individual Record	
BW	96
WW	485
205	509
WR	91
ADG	3.52
YW	1002
365	1072
YR	96

BT New Trend 172K
B Pride 353 of Mc Cumber
B Pride 613 of Mc Cumber

EPDs								Dam's Production		
BW	WW	Milk	YW	SC	IMF	REA	Fat	BW	WW	YW
3.8	41	29	78		.01	.15	.003	2/104	2/98	1/96

Ultrasound Data	
IMF	3.09/89
REA	10.6/90
Fat	0.25/86

This 004 son is long, thick and deep. He lost his mother this summer so his weights are off a little.

Lot 81 Mc CUMBER 1206 TREND 6131

Calved: 2/12/2006

Reg. No. 15428750

A A R New Trend
MC Cumber New Trend 1206
Miss Wix 705 of Mc Cumber

V D A R Shoshone 548
Donna A A R 74
Mc Cumber 124 Traveler 212
Miss Wix 235 of Mc Cumber
Traveler 124 G D A R
G D A R Rachel 5115
054 P J M 1438
Miss Wix 365 of Mc Cumber

Individual Record	
BW	104
WW	672
205	646
WR	99
ADG	3.86
YW	1240
365	1264
YR	104

Ultrasound Data	
IMF	3.3/85
REA	13.6/105
Fat	0.3/91

EPDs								Dam's Production		
BW	WW	Milk	YW	SC	IMF	REA	Fat	BW	WW	YW
6.3	24	24	48		-.09	.35	-.011	4/104	4/97	4/101

A high gaining, heavy muscled son of Mc Cumber New Trend 1206. 6131 is a big butted, wide topped bull. To go along with this he is wide based, and free moving. He gained 3.86 lbs./day, and scanned a REA of 13.6 to ratio 105. A little more birth weight with this bull, but put him with your cows where he will sire, fast growing, heavy muscled steers, and females with added width and fleshing ability.



Miss Wix 098. Maternal granddam of Lot 81.

Lot 82 Mc CUMBER 9802 VALUBULL 6132

Calved: 2/13/2006

Reg. No. 15429666

Sitz Value 7097
Sitz Triangle S Valubull
Sitz Barbaramere Nell 1590

Sitz Traveler 6802
Sitz Eisa Evergreen 791
D H D Traveler 6807
Sitz Barbaramere Nell 2124
A A R New Trend
Miss Wix 705 of Mc Cumber
Mc Cumber 71 Traveler 7114
Miss Wix 709 of Mc Cumber

Individual Record	
BW	68
WW	602
205	658
WR	101
ADG	3.47
YW	1112
365	1213
YR	100

Ultrasound Data	
IMF	4.1/106
REA	13.2/102
Fat	0.23/70

EPDs								Dam's Production		
BW	WW	Milk	YW	SC	IMF	REA	Fat	BW	WW	YW
0	30	23	55		.03	.18	-.010	1/81	1/101	1/100

Recommended for use on heifers- 6132 is a moderate framed, good scanning, heavy muscled heifer bull that will certainly catch your eye. His dam is a perfect uddered daughter of 1206. She is deep bodied, easy fleshing, and good footed.

Lot 83 Mc CUMBER 3116 VRD 6143

Calved: 2/16/2006

Reg. No. 15428760

Vermilion Dateline 7078
MC Cumber 7078 VRD 3116
Gale 836 of Mc Cumber

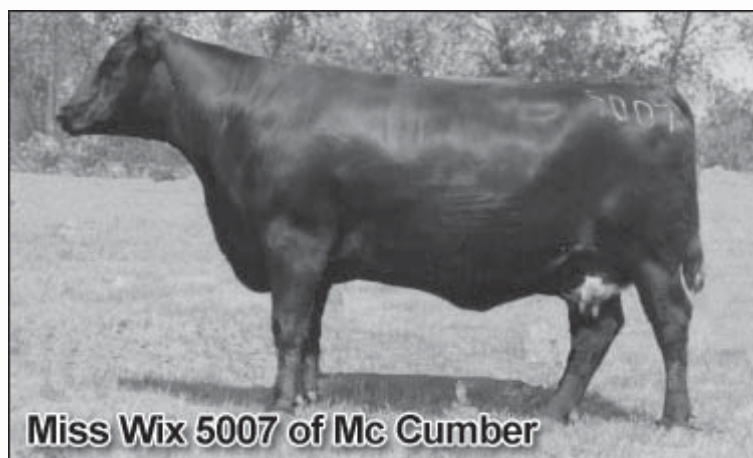
Connealy Dateline
Vermilion Blackbird 5044
Circle Oak Lucys Boy 625
Gale 6129 of Mc Cumber
A A R New Trend
BT Everelda Entense 57D
Papa Equator 2928
Miss Wix 051 of Mc Cumber

Individual Record	
BW	94
WW	678
205	701
WR	108
ADG	4.16
YW	1290
365	1367
YR	112

Ultrasound Data	
IMF	4.92/127
REA	13.3/103
Fat	0.37/112

EPDs								Dam's Production		
BW	WW	Milk	YW	SC	IMF	REA	Fat	BW	WW	YW
5.7	48	26	88		.23	.33	.013	2/107	2/104	2/107

One of the top sons of Mc Cumber 7078 VRD 3116 in the sale. 6143 is one of the high gaining, best scanning bulls in the sale. He gained 4.16 lbs./day and weighed off test at nearly 1300 lbs. to earn a 365 day weight of 1367 to ratio 112. He scanned a %IMF of 4.92 to ratio 127 and had a REA of 13.3 to ratio 103. **His dam is a perfect uddered daughter of BT New Trend 172K and member of the Miss Wix cow family.** The bottom side of her pedigree traces to **5 consecutive generations of pathfinders**, which includes Miss Wix 365 of Mc Cumber. **6143 is deep bodied, naturally thick, and excellent on his feet and legs.** His ratios are excellent across the board, and should be the type of bull to sire market topping calves.



Maternal sister to Lot 84.

Lot 84 Mc CUMBER 383 TRADITION 6146

Calved: 2/17/2006

Reg. No. 15428763

Leachman Right Time
MC Cumber Tradition 383
Lassie 7015 of Mc Cumber

N Bar Emulation EXT
Leachman Erica 0025
Mc Cumber 124 Traveler 212
Lassie 648 of Mc Cumber
V D A R Rito 953
Gale 607 of Mc Cumber
Mc Cumber 124 Traveler 212
Miss Wix 0105 of Mc Cumber

Individual Record	
BW	102
WW	695
205	678
WR	104
ADG	3.16
YW	1142
365	1164
YR	96

Mc Cumber 953 Rito 420
Miss Wix 843 of Mc Cumber
Miss Wix 6101 of Mc Cumber

EPDs								Dam's Production		
BW	WW	Milk	YW	SC	IMF	REA	Fat	BW	WW	YW
3.9	34	25	64		-.01	.21	.029	7/105	7/104	4/103

Ultrasound Data	
IMF	3.77/97
REA	13.3/103
Fat	0.35/106

A bigger-framed son of Mc Cumber Tradition 383. 6146 is deep bodied, stout, and wide. His dam is a moderate framed, easy fleshing daughter of 420 who has produced one graduate of our bull sale selling to Ron and Dorothy Slaubaugh ND, and produced a \$5000 bred heifer to 12 Star in LA through 2006 female sale. She also descends from 4 consecutive generations of pathfinder cows with outstanding fertility, and production.



Mc Cumber 3116 VRD 6143

Lot 85

Mc CUMBER 3108 VRD 6147

Calved: 2/18/2006

Reg. No. 15428764

Vermilion Dateline 7078
MC Cumber 7078 VRD 3108
Lassie 974 of Mc Cumber

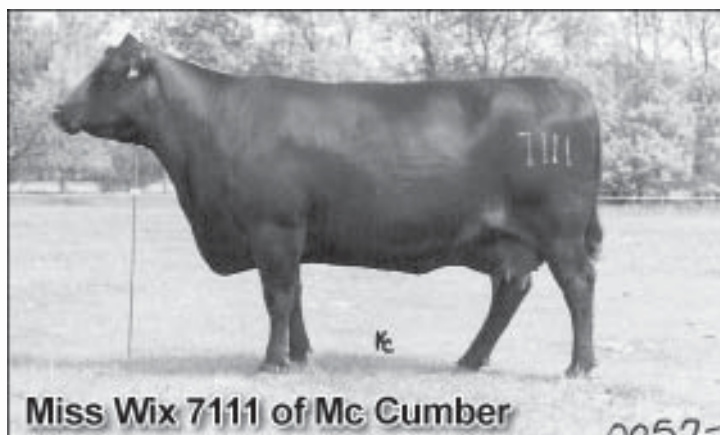
Connealy Dateline
Vermilion Blackbird 5044
Mc Cumber Foundation 701
Lassie 272 of Mc Cumber
Leachman Right Time
Sitz Everelda Entense 1905
G D A R Traveler 71
Miss Wix 365 of Mc Cumber

Individual Record	
BW	82
WW	544
205	574
WR	88
ADG	3.14
YW	1006
365	1076
YR	88

Ultrasound Data	
IMF	4.52/116
REA	11.8/91
Fat	0.26/79

EPDs								Dam's Production		
BW	WW	Milk	YW	SC	IMF	REA	Fat	BW	WW	YW
2.9	31	22	62		.05	.38	.018	2/96	2/94	2/94

Recommended for use on heifers- A well made, moderate framed bull that is perfect on his feet and legs. His dam is a super uddered, easy fleshing daughter of BT Right Time 24J.



Above: Maternal granddam of Lot 85.
Below: Maternal sisters to dam of Lot 85.



Lot 87

Mc CUMBER 1206 TREND 6155

Calved: 2/19/2006

Reg. No. 15428772

A A R New Trend
MC Cumber New Trend 1206
Miss Wix 705 of Mc Cumber

V D A R Shoshone 548
Donna A A R 74
Mc Cumber 124 Traveler 212
Miss Wix 235 of Mc Cumber
Papa Equator 2928
Rosetta 048 of Mc Cumber
Mc Cumber Stretch 604
Miss Wix 063 of Mc Cumber

Mc Cumber Powertrain HC 1025
Miss Wix 1182 of Mc Cumber
Miss Wix 554 of Mc Cumber

Individual Record	
BW	84
WW	542
205	611
WR	100
ADG	3.06
YW	992
365	1101
YR	98

EPDs								Dam's Production		
BW	WW	Milk	YW	SC	IMF	REA	Fat	BW	WW	YW
5.1	23	24	44		.04	.31	-.013	2/103	2/91	

Ultrasound Data	
IMF	4.76/123
REA	12.6/101
Fat	0.27/87

6155-6156- A pair of identical twin brothers. They are moderate, deep, and heavy muscled.

Lot 86

Mc CUMBER 3108 VRD 6150

Calved: 2/19/2006

Reg. No. 15428767

Vermilion Dateline 7078
MC Cumber 7078 VRD 3108
Lassie 974 of Mc Cumber

Connealy Dateline
Vermilion Blackbird 5044
Mc Cumber Foundation 701
Lassie 272 of Mc Cumber
Mc Cumber 124 Traveler 212
Miss Wix 235 of Mc Cumber
HBR Rito Bravo 1441
Miss Wix 04 of Mc Cumber

Individual Record	
BW	106
WW	674
205	662
WR	102
ADG	4.16
YW	1285
365	1328
YR	109

EPDs								Dam's Production		
BW	WW	Milk	YW	SC	IMF	REA	Fat	BW	WW	YW
6.9	33	21	76		-.12	.40	.022	4/113	4/99	3/110

Ultrasound Data	
IMF	3.92/101
REA	13.8/107
Fat	0.35/106

A rancher's bull with muscle, length, stoutness, and rib. 6150 is an excellent son of our 2004 sale topper Mc Cumber 7078 VRD 3108. 3108 has been a consistent sire of pounds, muscle, and length. 3108's dam is Lassie 974 of Mc Cumber, who was the cover cow for our 2006 female sale catalog, and the popular, high selling mature cow to Haywood Farms in IA. The dam to 6150 is a powerfully built, massive bodied daughter of Mc Cumber Foundation 701, making 6150 double bred to Foundation.

Lot 88

Mc CUMBER 1206 TREND 6156

Calved: 2/19/2006

Reg. No. 15428773

A A R New Trend
MC Cumber New Trend 1206
Miss Wix 705 of Mc Cumber

V D A R Shoshone 548
Donna A A R 74
Mc Cumber 124 Traveler 212
Miss Wix 235 of Mc Cumber
Papa Equator 2928
Rosetta 048 of Mc Cumber
Mc Cumber Stretch 604
Miss Wix 063 of Mc Cumber

Mc Cumber Powertrain HC 1025
Miss Wix 1182 of Mc Cumber
Miss Wix 554 of Mc Cumber

Individual Record	
BW	82
WW	550
205	619
WR	102
ADG	3.07
YW	1002
365	1110
YR	99

EPDs								Dam's Production		
BW	WW	Milk	YW	SC	IMF	REA	Fat	BW	WW	YW
5.1	23	24	44		-.16	.46	-.008	2/103	2/91	

Ultrasound Data	
IMF	3.03/78
REA	14/112
Fat	0.31/100

Lot 89

Mc CUMBER 3108 VRD 6157

Calved: 2/20/2006

Reg. No.

Vermilion Dateline 7078
MC Cumber 7078 VRD 3108
Lassie 974 of Mc Cumber

Connealy Dateline
Vermilion Blackbird 5044
Mc Cumber Foundation 701
Lassie 272 of Mc Cumber

Individual Record	
BW	96
WW	680
205	670
WR	100
ADG	3.58
YW	1206
365	1243
YR	100
Ultrasound Data	
IMF	4.94/100
REA	13.1/100
Fat	.48/100

EPDs								Dam's Production		
BW	WW	Milk	YW	SC	IMF	REA	Fat	BW	WW	YW

A son of Mc Cumber 7078 VRD 3108 with excellent performance. His dam is a commercial cow so **he will sell without registration papers**. 6157 is heavy muscled, deep bodied, and long.

Lot 90

Mc CUMBER 3108 VRD 6158

Calved: 2/20/2006

Reg. No. 15428774

Vermilion Dateline 7078
MC Cumber 7078 VRD 3108
Lassie 974 of Mc Cumber

Connealy Dateline
Vermilion Blackbird 5044
Mc Cumber Foundation 701
Lassie 272 of Mc Cumber
Mc Cumber Equator 6122
Rosetta 421 of Mc Cumber
Mr Wix of Mc Cumber 204
Rosetta 4117 of Mc Cumber

Individual Record	
BW	85
WW	550
205	584
WR	90
ADG	3.18
YW	1018
365	1093
YR	90
Ultrasound Data	
IMF	3.32/86
REA	10.9/84
Fat	0.18/55

EPDs								Dam's Production		
BW	WW	Milk	YW	SC	IMF	REA	Fat	BW	WW	YW
3.9	30	22	64		-.08	.08	-.010	2/96	2/92	2/96

This son of 3108 is moderate framed, deep bodied, and well made. His dam is extremely easy fleshing, and has a perfect udder.



Paternal
grandsire of
Lots 89, 90, 91
and 92.

Vermilion Dateline 7078

Lot 91

Mc CUMBER 3108 VRD 6161

Calved: 2/20/2006

Reg. No. 15428775

Vermilion Dateline 7078
MC Cumber 7078 VRD 3108
Lassie 974 of Mc Cumber

Connealy Dateline
Vermilion Blackbird 5044
Mc Cumber Foundation 701
Lassie 272 of Mc Cumber
Traveler 124 G D A R
Miss Wix 365 of Mc Cumber
Shoshone Viking GD60
Miss Wix 117 of Mc Cumber

Individual Record	
BW	80
WW	628
205	697
WR	107
ADG	3.33
YW	1118
365	1230
YR	101
Ultrasound Data	
IMF	4.18/108
REA	12.1/94
Fat	0.29/88

EPDs								Dam's Production		
BW	WW	Milk	YW	SC	IMF	REA	Fat	BW	WW	YW
5.2	31	25	65		0.0	.10	.014	5/103	5/107	2/109

A natural son of Miss Wix 702 of Mc Cumber, who is a full sister to Mc Cumber Foundation 701. 6161 is a long bodied, smooth shouldered bull with a quiet disposition, and excellent scrotal development.



Lot 92

Mc CUMBER 3108 VRD 6166

Calved: 2/21/2006

Reg. No. 15428780

Vermilion Dateline 7078
MC Cumber 7078 VRD 3108
Lassie 974 of Mc Cumber

Connealy Dateline
Vermilion Blackbird 5044
Mc Cumber Foundation 701
Lassie 272 of Mc Cumber
V D A R Rito 953
Gale 607 of Mc Cumber
Tehama Bando 155
Miss Wix 365 of Mc Cumber

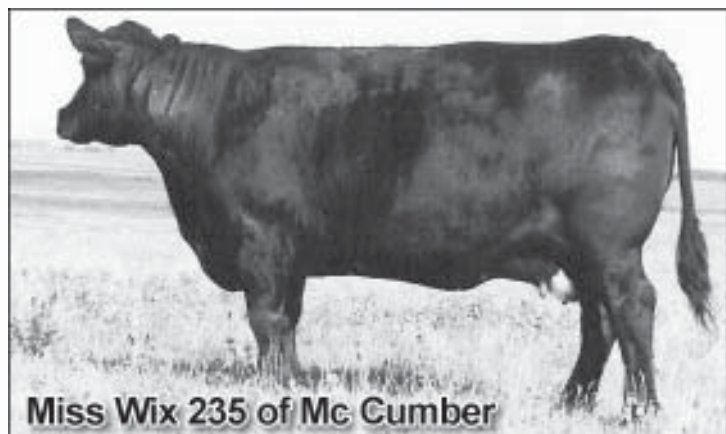
Individual Record	
BW	91
WW	696
205	687
WR	106
ADG	3.7
YW	1240
365	1279
YR	105
Ultrasound Data	
IMF	3.48/90
REA	15.6/121
Fat	0.32/97

EPDs								Dam's Production		
BW	WW	Milk	YW	SC	IMF	REA	Fat	BW	WW	YW
2.6	33	27	68		-.16	.63	.011	3/104	3/108	3/105

Selling 2/3 interest and full possession- This deep bodied, moderate framed, heavy muscled scamp recorded the **largest REA of the group at 15.6 to ratio 121**. His REA EPD of .63 ranks in the top 5% of the breed for non-parent Angus bulls. **This herd sire prospect has been a standout from the beginning.** His highly productive dam has a WWR of 3@108, and REA of 3@114. Along with that, she is a grand daughter of Miss Wix 365 of Mc Cumber and is currently nursing another herd sire prospect by LT Timberwolf 5014. If you like em' thick, deep, and moderate you'll want to look up 6166 on sale day.



Paternal granddam of
Lots 89, 90, 91 and 92.



Maternal granddam of Lot 91.

Lot 93

Mc CUMBER 3108 VRD 6168

Calved: 2/22/2006

Reg. No. 15428781

Vermilion Dateline 7078
MC Cumber 7078 VRD 3108
Lassie 974 of Mc Cumber

Mc Cumber Foundation 701
Rosetta 1126 of Mc Cumber
Rosetta 5002 of Mc Cumber

Connealy Dateline
Vermilion Blackbird 5044
Mc Cumber Foundation 701
Lassie 272 of Mc Cumber
Mc Cumber 124 Traveler 212
Miss Wix 235 of Mc Cumber
Tehama Bando 155
Rosetta 214 of Mc Cumber

Individual Record							
BW	93	WW	694	205	688	WR	106
ADG	3.78	YW	1250	365	1293	YR	106
Ultrasound Data							
IMF	3.54/91	REA	14.9/116	Fat	0.24/73		

EPDs								Dam's Production			
BW	4.1	WW	35	Milk	22	YW	71	SC	IMF	REA	Fat

Selling 2/3 interest and full possession-
No matter how you look at him, 6168 is a beef bull. He is a big, stout bull with tremendous depth of rib, a big top, and extra shape and expression to his hind quarter. 6168 earned a WWR of 106, gained 3.71 lbs./day and recorded a 365 day weight of nearly 1300 lbs. to ratio 106. Along with this he had a REA of nearly 15 to ratio 116. His dam is a wonderful beef cow by Mc Cumber Foundation 701. Rosetta 1126 of Mc Cumber is moderate framed, easy fleshing, deep from fore rib to flank, super uddered, and wide bodied. She is the kind of cow that we like to keep around here.



Maternal granddam of Lot 93.

Lot 94

Mc CUMBER TOTAL VALUE 6169

Calved: 2/22/2006

Reg. No. 15428782

Vermilion Dateline 7078
MC Cumber 7111 Total Value
Miss Wix 7111 of Mc Cumber

Sitz S L S Rainmaker 7596
Enchantress 086 of Mc Cumber
Enchantress 816 Mc Cumber

Connealy Dateline
Vermilion Blackbird 5044
G D A R Traveler 71
Miss Wix 365 of Mc Cumber
G D A R Rainmaker 340
SLS Barbara Perfection 2571
Mc Cumber 953 Rito 420
Enchantress 687 Mc Cumber

Individual Record							
BW	94	WW	646	205	640	WR	98
ADG	3.33	YW	1136	365	1173	YR	96
Ultrasound Data							
IMF	3.04/78	REA	13.6/105	Fat	0.34/103		

EPDs								Dam's Production			
BW	3.5	WW	35	Milk	26	YW	65	SC	IMF	REA	Fat

This moderate framed, heavy muscled, tank by Mc Cumber 7111 Total Value is a maternal brother to Mc Cumber 8005 New Day 455. 6169 is a big topped, thick butted bull with a well shaped hoof, and plenty of rib. His dam is moderate framed, easy fleshing, and good uddered. 6169 is designed to withstand the challenges of any environment.

Lot 95

Mc CUMBER 3108 VRD 6174

Calved: 2/23/2006

Reg. No. 15428788

Vermilion Dateline 7078
MC Cumber 7078 VRD 3108
Lassie 974 of Mc Cumber

BT New Trend 172K
Blackcap 291 of Mc Cumber
Blackcap 620 of Mc Cumber

Connealy Dateline
Vermilion Blackbird 5044
Mc Cumber Foundation 701
Lassie 272 of Mc Cumber
A A R New Trend
BT Everelda Entense 57D
Mc Cumber 124 Traveler 212
Blackcap 024 of Mc Cumber

Individual Record							
BW	92	WW	630	205	644	WR	99
ADG	3.18	YW	1098	365	1153	YR	95
Ultrasound Data							
IMF	3.49/90	REA	13.6/105	Fat	0.36/109		

EPDs								Dam's Production			
BW	4.5	WW	30	Milk	26	YW	58	SC	IMF	REA	Fat

This masculine son of Mc Cumber 7078 VRD 3108 is expressive topped, and big butted. His visual muscle expression is confirmed by the fact that he scanned a REA of 13.6 to ratio 105, which calculates to a 1.21 REA/CWT. His dam is a beautiful, moderate framed, perfect uddered daughter of BT New Trend 172K.



Lot 96

Mc CUMBER 3108 VRD 6175

Calved: 2/23/2006

Reg. No. 15428789

Vermilion Dateline 7078
MC Cumber 7078 VRD 3108
Lassie 974 of Mc Cumber

BT New Trend 172K
Lady Barbola 2200 Mc Cumber
Lady Barbola 684 Mc Cumber

Connealy Dateline
Vermilion Blackbird 5044
Mc Cumber Foundation 701
Lassie 272 of Mc Cumber
A A R New Trend
BT Everelda Entense 57D
G D A R Gold Nugget 766
G D A R Lady Barbola 4186

Individual Record							
BW	89	WW	630	205	644	WR	99
ADG	3.85	YW	1196	365	1260	YR	103
Ultrasound Data							
IMF	3.61/93	REA	12.6/98	Fat	0.41/124		

EPDs								Dam's Production			
BW	3.7	WW	35	Milk	25	YW	73	SC	IMF	REA	Fat

This attractive son of 3108 is extremely well made, with natural thickness, and plenty of rib. His dam is a feminine fronted, long bodied, perfect uddered female by BT New Trend 172K.

Lot 97

Mc CUMBER 1206 N TREND 6180

Calved: 2/27/2006

Reg. No. 15428794

A A R New Trend
MC Cumber New Trend 1206
Miss Wix 705 of Mc Cumber

Mc Cumber 6122 Equator 8113
Gale 0158 of Mc Cumber
Gale 6129 of Mc Cumber

V D A R Shoshone 548
Donna A A R 74
Mc Cumber 124 Traveler 212
Miss Wix 235 of Mc Cumber
Mc Cumber Equator 6122
Rosetta 421 of Mc Cumber
Mc Cumber 054 Rito 326
Gale 413 of Mc Cumber

Individual Record							
BW	99	WW	638	205	643	WR	99
ADG	3.33	YW	1128	365	1176	YR	97
Ultrasound Data							
IMF	3.14/81	REA	13.1/102	Fat	0.2/61		

EPDs								Dam's Production			
BW	4.7	WW	20	Milk	26	YW	36	SC	IMF	REA	Fat

A son of our resident herd sire Mc Cumber New Trend 1206. 1206's EPDs don't represent the true genetic value he possesses. His sons, although not at the top of the growth chart are truly heavy muscled, deep bodied bulls with big testicles, and some of the largest REA's in the pen. His daughters are making tremendous, moderate framed, easy keeping, good uddered cows, who can take care themselves on roughage, and still breed back on time, while raising big calves. 6180 is a replica of his sire, and out of a moderate framed, perfect uddered daughter of Mc Cumber 6122 Equator 8113.



Dam of Lot 97. Pictured as a young cow.



Lot 100 Mc CUMBER 1206 N TREND 6185

Calved: 3/1/2006

Reg. No. 15428797

A A R New Trend
Mc Cumber New Trend 1205
Miss Wix 705 of Mc Cumber

Mc Cumber Ferdinand 896
Miss Wix 1119 of Mc Cumber
Miss Wix 8002 of Mc Cumber

V D A R Shoshone 548
Donna A A R 74
Mc Cumber 124 Traveler 212
Miss Wix 235 of Mc Cumber
R R Ferdinand 758D
Miss Wix 554 of Mc Cumber
G D A R Royce 131
Miss Wix 098 of Mc Cumber

Individual Record	
BW	97
WW	558
205	566
WR	87
ADG	3.58
YW	1084
365	1139
YR	94

EPDs								Dam's Production			Ultrasound Data	
BW	WW	Milk	YW	SC	IMF	REA	Fat	BW	WW	YW	IMF	
5.5	23	22	43		-.02	.47	-.014	3/100	3/94	3/96	4.48/115	
											REA	14.6/113
											Fat	0.34/103

A bigger framed son of Mc Cumber New Trend 1206. 6185 is one of the best scanning bulls in the group with a %IMF of 4.48 to ratio 116 and a REA of 14.6 to ratio 113 this calculate to a REA/CWT of 1.28. Not only did he scan well but 6185 is long, expressively muscled and has a big scrotum.

Lot 98 Mc CUMBER 3108 VRD 6183

Calved: 2/28/2006

Reg. No. 15428796

Vermilion Dateline 7078
MC Cumber 7078 VRD 3108
Lassie 974 of Mc Cumber

Mc Cumber Powertrain HC 1025
Miss Wix 293 of Mc Cumber
Miss Wix 9026 of Mc Cumber

Connealy Dateline
Vermilion Blackbird 5044
Mc Cumber Foundation 701
Lassie 272 of Mc Cumber
Papa Equator 2928
Rosetta 048 of Mc Cumber
Mc Cumber 124 Traveler 212
Miss Wix 235 of Mc Cumber

Individual Record	
BW	90
WW	588
205	613
WR	94
ADG	3.67
YW	1128
365	1200
YR	98

EPDs								Dam's Production			Ultrasound Data	
BW	WW	Milk	YW	SC	IMF	REA	Fat	BW	WW	YW	IMF	
4.5	33	22	70		.01	.43	.009	3/99	3/100	3/101	4.28/110	
											REA	12.4/96
											Fat	0.19/58

A big, long, good footed son of 3108. 6183 scanned a %IMF of 4.28 to ratio 110 while only carrying .17 of RF. His dam is a super uddered, deep bodied daughter of Mc Cumber Powertrain, and has already produced two graduates of our bull sale that sold for an average of \$3000 to Bruce Rockers in KS, and Ken and John Beneda ND.



Produced from the same cow family as Lot 100.

Lot 99 Mc CUMBER 3108 VRD 6184

Calved: 3/1/2006

Reg. No. 15428797

Vermilion Dateline 7078
MC Cumber 7078 VRD 3108
Lassie 974 of Mc Cumber

BT New Trend 172K
B Pride 2219 JVR Mc Cumber
B Pride 287 of Mc Cumber

Connealy Dateline
Vermilion Blackbird 5044
Mc Cumber Foundation 701
Lassie 272 of Mc Cumber
A A R New Trend
BT Everelda Entense 57D
054 P J M 1438
B Pride 4103 of Mc Cumber

Individual Record	
BW	90
WW	662
205	690
WR	106
ADG	3.56
YW	1186
365	1260
YR	103

EPDs								Dam's Production			Ultrasound Data	
BW	WW	Milk	YW	SC	IMF	REA	Fat	BW	WW	YW	IMF	
3.7	35	28	71		-.08	.23	.007	3/104	3/107	3/110	3.83/99	
											REA	12.3/95
											Fat	0.33/100

Another legitimate beef bull by 3108. 6184 is moderate framed, deep bodied, and thick from front to back. He earned a WWR of 106 and recorded a 365 day weight of 1260 lbs. to ratio 103. It seems like I'm saying the same thing about these 3108 sons, but they are a real consistent sire group with extra muscle, length, and performance. The dam of 6184 is one of the most phenotypically appealing females on the ranch. She is beautiful fronted, but has a tremendous amount of body capacity, is easy fleshing, and flawless uddered, with small teats, and a level, well attached udder.

Lot 101 Mc CUMBER 1206 N TREND 6186

Calved: 3/3/2006

Reg. No. 15428799

A A R New Trend
MC Cumber New Trend 1206
Miss Wix 705 of Mc Cumber

Mc Cumber Equator 6122
Gale 8124 of Mc Cumber
Gale 229 of Mc Cumber

V D A R Shoshone 548
Donna A A R 74
Mc Cumber 124 Traveler 212
Miss Wix 235 of Mc Cumber
Papa Equator 2928
Miss Wix 365 of Mc Cumber
V D A R New Trend 315
Gale 413 of Mc Cumber

Individual Record	
BW	101
WW	620
205	633
WR	97
ADG	2.95
YW	1054
365	1105
YR	91

EPDs								Dam's Production			Ultrasound Data	
BW	WW	Milk	YW	SC	IMF	REA	Fat	BW	WW	YW	IMF	
5.2	23	24	41		-.08	.47	-.018	7/103	7/97	3/102	3.29/85	
											REA	13.9/108
											Fat	0.25/76

Another heavy muscled son by 1206 with a big REA. 6186 scanned a REA of 13.9 to ratio 108 and has a REA/CWT of 1.25. His dam is a super uddered, big bodied daughter of Mc Cumber Equator 6122.



102

Mc CUMBER 3108 VRD 6189

Calved: 3/5/2006

Reg. No. 15428802

Vermilion Dateline 7078
MC Cumber 7078 VRD 3108
Lassie 974 of Mc Cumber

BT Right Time 24J
Miss Wix 364 of Mc Cumber
Miss Wix 9131 of Mc Cumber

Connealy Dateline
Vermilion Blackbird 5044
Mc Cumber Foundation 701
Lassie 272 of Mc Cumber
Leachman Right Time
Sitz Everelda Entense 1905
Hilltop Rito H218
Miss Wix 5168 of Mc Cumber

Individual Record	
BW	98
WW	628
205	688
WR	106
ADG	3.71
YW	1174
365	1282
YR	105

Ultrasound Data	
IMF	3.5/90
REA	12.1/94
Fat	0.35/106

EPDs								Dam's Production		
BW	WW	Milk	YW	SC	IMF	REA	Fat	BW	WW	YW
5.4	41	20	81		-.08	.23	.019	2/108	2/107	2/106

A big, stout, high performing son of Mc Cumber 7078 VRD 3108. 6189 earned a WWR of 106 and gained 3.71 lbs./day earning him a YWR of 105. His dam is just how you would like to make them. Miss Wix 364 of Mc Cumber is a moderate framed, deep bodied, easy fleshing daughter of BT Right Time 24J. She has a super udder with small well placed teats and a tight, level attachment. Along with this she currently has a WWR of 2@107, YWR of 2@106 and REA of 2@104.



103

Mc CUMBER 3108 VRD 6193

Calved: 3/7/2006

Reg. No. 15428805

Vermilion Dateline 7078
MC Cumber 7078 VRD 3108
Lassie 974 of Mc Cumber

BT New Trend 172K
Miss Wix 382 of Mc Cumber
Miss Wix 9166 of Mc Cumber

Connealy Dateline
Vermilion Blackbird 5044
Mc Cumber Foundation 701
Lassie 272 of Mc Cumber
A A R New Trend
BT Everelda Entense 57D
Mc Cumber Powertrain HC 1025
Miss Wix 640 of Mc Cumber

Individual Record	
BW	95
WW	584
205	647
WR	99
ADG	3.92
YW	1160
365	1274
YR	104

Ultrasound Data	
IMF	2.72/70
REA	13.8/107
Fat	0.37/112

EPDs								Dam's Production		
BW	WW	Milk	YW	SC	IMF	REA	Fat	BW	WW	YW
5.9	36	25	76		-.21	.48	.018	2/101	2/101	2/104

This high performing son of 3108 gained nearly 4 lbs./day on test. He is long, thick and heavy muscled. 6193 recorded a REA of 13.8 to ratio 107 and had a 365 day weight of nearly 1300 lbs. to ratio 104. His dam is a feminine, long bodied, excellent uddered daughter of BT New Trend 172K. **These young 3108 bulls are high performance cattle and I would expect them to add pounds and performance to a calf crop.**



104

Mc CUMBER 3108 VRD 6194

Calved: 3/8/2006

Reg. No. 15428806

Vermilion Dateline 7078
MC Cumber 7078 VRD 3108
Lassie 974 of Mc Cumber

Mc Cumber Foundation 701
Lassie 0171 of Mc Cumber
Lassie 272 of Mc Cumber

Connealy Dateline
Vermilion Blackbird 5044
Mc Cumber Foundation 701
Lassie 272 of Mc Cumber
Mc Cumber 124 Traveler 212
Miss Wix 235 of Mc Cumber
A A R New Trend
Lassie 252 of Mc Cumber

Individual Record	
BW	97
WW	638
205	664
WR	102
ADG	3.69
YW	1180
365	1254
YR	103

Ultrasound Data	
IMF	3.14/81
REA	13.3/103
Fat	0.27/82

EPDs								Dam's Production		
BW	WW	Milk	YW	SC	IMF	REA	Fat	BW	WW	YW
5.5	32	23	69		-.17	.33	.008	5/101	5/102	5/104

Another son of 3108 with muscle, length, depth and excellent feet and legs. 6194 is a high performance bull that earned a WWR of 102, YWR of 103 and had a REA of 13.3 to ratio 103. His dam is a highly productive daughter of Mc Cumber Foundation 701 with WWR of 5@102 and YWR 5@104. She has produced one son that sold to Wayne Artz of Antler as a feature of that bull sale.



105

Mc CUMBER 3108 VRD 6195

Calved: 3/9/2006

Reg. No. 15428807

Vermilion Dateline 7078
MC Cumber 7078 VRD 3108
Lassie 974 of Mc Cumber

Mc Cumber Foundation 701
Lassie 974 of Mc Cumber
Lassie 272 of Mc Cumber

Connealy Dateline
Vermilion Blackbird 5044
Mc Cumber Foundation 701
Lassie 272 of Mc Cumber
Mc Cumber 124 Traveler 212
Miss Wix 235 of Mc Cumber
A A R New Trend
Lassie 252 of Mc Cumber

Individual Record	
BW	90
WW	618
205	646
WR	99
ADG	3.31
YW	1104
365	1176
YR	96

Ultrasound Data	
IMF	4.09/105
REA	13/101
Fat	0.33/100

EPDs								Dam's Production		
BW	WW	Milk	YW	SC	IMF	REA	Fat	BW	WW	YW
4.6	28	23	64		-.07	.37	.021	6/99	6/100	5/103

A super scanning son of 3108 and out of Lassie 974 of Mc Cumber. Lassie 974 was the high selling mature cow in our 2006 Cow sale to Haywood Farms in IA and was the popular cow on the cover of the catalog. She is easy fleshing, deep bodied and has an excellent udder. 6195 had a %IMF of 4.09 to ratio 105 and REA of 13 to ratio 101.



Lassie 974 of Mc Cumber

Dam of Lot 105 and full sister to dam of Lot 104.



Mc Cumber 7078 VRD 3108

Maternal brother to Lot 105.
Sire of Lot 108

Lot 106 Mc CUMBER 4X13 EXTRA 6197

Calved: 3/11/2006

Reg. No. 15428809

N Bar Emulation EXT
Sinclair Extra 4X13
N Bar Lady Ida S C C 2P37

Pine Creek Right Time 1147
Rosetta 464 of Mc Cumber
Rosetta 1126 of Mc Cumber

Emulation N Bar 5522
N Bar Primrose 2424
N Bar Prime Time D806
N Bar Lady Ida F1080
Leachman Right Time
Sitz Everelda Entense 1137
Mc Cumber Foundation 701
Rosetta 5002 of Mc Cumber

Individual Record	
BW	86
WW	542
205	650
WR	100
ADG	3.78
YW	1098
365	1255
YR	103

Ultrasound Data	
IMF	4.71/121
REA	12.5/97
Fat	0.3/91

EPDs							
BW	WW	Milk	YW	SC	IMF	REA	Fat
2.2	43	21	82		.27	.24	.026

Dam's Production			
BW	WW	YW	
1/101	1/100	1/103	

Recommended for use on heifers-A long bodied, well made son of Sinclair Extra 4X13. This mid-March bull scanned a %IMF of 4.71 to ratio 121 with a RF ratio of 91, along with this he gained 3.78 lbs./day and recorded of 365 day weight of 1255 lbs. to ratio 103. His dam is a perfect uddered, easy fleshing, big bodied daughter of Pine Creek Right Time 1147. **We highly recommend the 4X13 sons for use on heifers. You will not have to sacrifice early growth and will immediately improve the carcass composition of your cattle, while creating females that will thrive under any management situation.**

Lot 107 Mc CUMBER 1206 N TREND 6200

Calved: 3/11/2006

Reg. No. 15428813

A A R New Trend
MC Cumber New Trend 1206
Miss Wix 705 of Mc Cumber

BT New Trend 172K
Miss Wix 317 of Mc Cumber
Miss Wix 0192 of Mc Cumber

V D A R Shoshone 548
Donna A A R 74
Mc Cumber 124 Traveler 212
Miss Wix 235 of Mc Cumber
A A R New Trend
BT Everelda Entense 57D
Hilltop Rito H218
Miss Wix 765 of Mc Cumber

Individual Record	
BW	89
WW	558
205	629
WR	97
ADG	2.67
YW	950
365	1056
YR	87

Ultrasound Data	
IMF	3.68/95
REA	12.5/97
Fat	0.29/88

EPDs							
BW	WW	Milk	YW	SC	IMF	REA	Fat
4.1	23	25	34		.04	.24	-.015

Dam's Production			
BW	WW	YW	
2/97	2/89	2/85	

A moderate framed, deep bodied, heavy muscled son of Mc Cumber New Trend 1206. His dam is an easy fleshing, super uddered daughter of BT New Trend 172K and member of the Miss Wix cow family.



Miss Wix 705 of Mc Cumber

Paternal
granddam
of Lot 107.

Lot 108 Mc CUMBER 3108 VRD 6204

Calved: 3/11/2006

Reg. No. 15428813

Vermilion Dateline 7078
Mc Cumber 7078 VRD 3108
Lassie 974 of Mc Cumber

BT New Trend 172K
Lassie 2197 of Mc Cumber
Lassie 658 of Mc Cumber

Connealy Dateline
Vermilion Blackbird 5044
Mc Cumber Foundation 701
Lassie 272 of Mc Cumber
A A R New Trend
BT Everelda Entense 57D
Mc Cumber Stretch 604
Lassie 031 of Mc Cumber

Individual Record	
BW	97
WW	612
205	667
WR	102
ADG	2.67
YW	1004
365	1094
YR	90

Ultrasound Data	
IMF	3.57/92
REA	11.0/85
Fat	0.27/82

EPDs							
BW	WW	Milk	YW	SC	IMF	REA	Fat
5.0	34	27	59		-.04	.18	.001

Dam's Production			
BW	WW	YW	
3/106	3/108	3/100	

A long, smooth, deep bodied son of 3108.

Lot 109 Mc CUMBER 3108 VRD 6210

Calved: 3/17/2006

Reg. No. 15428823

Vermilion Dateline 7078
MC Cumber 7078 VRD 3108
Lassie 974 of Mc Cumber

BT New Trend 172K
Rosetta 376 of Mc Cumber
Rosetta 849 of Mc Cumber

Connealy Dateline
Vermilion Blackbird 5044
Mc Cumber Foundation 701
Lassie 272 of Mc Cumber
A A R New Trend
BT Everelda Entense 57D
G D A R Band 477
Rosetta 541 of Mc Cumber

Individual Record	
BW	88
WW	608
205	698
WR	107
ADG	3.16
YW	1072
365	1204
YR	99

Ultrasound Data	
IMF	2.58/66
REA	13.6/105
Fat	0.31/94

This mid-March son of 3108 earned a 205 day weight of nearly 700 lbs. to ratio 107. He recorded a REA of 13.6 to ratio 105 and is long bodied, heavy muscled and excellent on his feet and legs.

Lot 110 Mc CUMBER 3108 VRD 6213

Calved: 3/17/2006

Reg. No. 15428825

Vermilion Dateline 7078
MC Cumber 7078 VRD 3108
Lassie 974 of Mc Cumber

Circle Oak Lucys Boy 625
Rosetta 1029 of Mc Cumber
Rosetta 405 of Mc Cumber

Connealy Dateline
Vermilion Blackbird 5044
Mc Cumber Foundation 701
Lassie 272 of Mc Cumber
V D A R Lucys Boy
Homestretch Miss Wix 299
Shoshone 247 P J M
Rosetta 148 of Mc Cumber

Individual Record	
BW	97
WW	602
205	649
WR	100
ADG	3.69
YW	1144
365	1239
YR	102

Ultrasound Data	
IMF	4.14/107
REA	12.6/98
Fat	0.28/85

This attractive, expressively muscled, big hipped bull balances above average ratios across the board. His dam is a daughter of Rosetta 405 of Mc Cumber, who is the dam of Mc Cumber Stretch 604. She has WWR of 4@105, YWR 4@102, %IMF 4@113 and a REA 4@100. Rosetta has produced one son that sold to the Bar V Ranch ND, through our 2004 bull sale. 6213 scanned a %IMF of 4.14 to ratio 107 with only a Rib Fat ratio of 85. 6213 is a younger bull to definitely check out.

Lot 111 Miss Wix 6219 of Mc CUMBER

Calved: 3/21/2006

Reg. No. 15428830

Tehama Bando 155
MC Cumber Classic 202
Miss Wix 365 of Mc Cumber

V D A R New Trend 47
Miss Wix 1059 of Mc Cumber
Miss Wix 098 of Mc Cumber

Band 234 of Ideal 3163
Tehama Blackcap G373
Shoshone 247 P J M
Miss Wix 294 of Mc Cumber
V D A R New Trend 315
V D A R Miss Wix 606
054 P J M 1438
Miss Wix 365 of Mc Cumber

Individual Record	
BW	90
WW	608
205	667
WR	102
ADG	2.95
YW	1042
365	1139
YR	93

Ultrasound Data	
IMF	4.16/107
REA	12.8/99
Fat	0.25/76

A long bodied, heavy muscled son of Mc Cumber Classic 202.



Miss Wix 098 of Mc Cumber

Maternal
Granddam of
Lot 111.

Lot 112 Mc CUMBER 1206 N TREND 6222

Calved: 3/24/2006

Reg. No. 15428831

A A R New Trend
MC Cumber New Trend 1206
Miss Wix 705 of Mc Cumber

V D A R Shoshone 548
Donna A A R 74
Mc Cumber 124 Traveler 212
Miss Wix 235 of Mc Cumber

Matthew of Mc Cumber HC 6365
Lassie 960 of Mc Cumber
Lassie 628 of Mc Cumber

Rito 054 G D A R
Miss Wix 365 of Mc Cumber
G D A R Gold Nugget 766
Lassie 462 of Mc Cumber

EPDs								Dam's Production		
BW	WW	Milk	YW	SC	IMF	REA	Fat	BW	WW	YW
4.7	18	26	34		.02	.42	-.015	4/100	4/96	3/98

Individual Record	
BW	95
WW	574
205	637
WR	98
ADG	3.14
YW	1036
365	1139
YR	94

Ultrasound Data	
IMF	4.21/109
REA	13.9/108
Fat	0.26/79

This end of March son of Mc Cumber New Trend 1206 is moderate framed, deep bodied, naturally thick and has extra shape to his top and rear quarter. 6222 scanned extremely well with a %IMF of 4.21 to ratio 109 and a REA of 13.9 to ratio 109. 6222 is young but should not be overlooked.

Lot 113 Mc CUMBER 3108 VRD 6225

Calved: 3/25/2006

Reg. No. 15428834

Vermilion Dateline 7078
MC Cumber 7078 VRD 3108
Lassie 974 of Mc Cumber

Connealy Dateline
Vermilion Blackbird 5044
Mc Cumber Foundation 701
Lassie 272 of Mc Cumber

BT New Trend 172K
Blackcap 325 of Mc Cumber
Blackcap 8133 of Mc Cumber

A A R New Trend
BT Everelda Entense 57D
Mc Cumber Powertrain HC 1025
Blackcap 437 of Mc Cumber

EPDs								Dam's Production		
BW	WW	Milk	YW	SC	IMF	REA	Fat	BW	WW	YW
4	36	25	72		-.10	.31	.019	2/96	2/96	2/93

Individual Record	
BW	88
WW	546
205	651
WR	100
ADG	3.46
YW	1054
365	1205
YR	99

Ultrasound Data	
IMF	3.52/91
REA	13.3/103
Fat	0.34/103



Maternal grandsire of Lot 113.

Selling 2/3 interest and full possession- A good looking, well balanced, masculine son of Mc Cumber 7078 VRD 3108. 6225 has the herd bull look with abundant muscle, stoutness and a very impressive dam. His dam is one of the easiest fleshing daughters of BT New Trend 172K and has a wonderful udder. She is big bodied, wide made and excellent on her feet and legs. This is the second youngest bull in the sale, but I think he is a herd bull candidate.

Lot 114 Mc CUMBER 1206 N TREND 6231

Calved: 4/2/2006

Reg. No. 15428839

A A R New Trend
MC Cumber New Trend 1206
Miss Wix 705 of Mc Cumber

V D A R Shoshone 548
Donna A A R 74
Mc Cumber 124 Traveler 212
Miss Wix 235 of Mc Cumber

Mc Cumber Powertrain HC 1025
Blackcap 8133 of Mc Cumber
Blackcap 437 of Mc Cumber

Papa Equator 2928
Rosetta 048 of Mc Cumber
Tehama Bando 155
Blackcap 293 of Mc Cumber

EPDs								Dam's Production		
BW	WW	Milk	YW	SC	IMF	REA	Fat	BW	WW	YW
5.5	25	24	45		-.02	.12	-.005	7/104	7/97	4/102

Individual Record	
BW	102
WW	540
205	622
WR	96
ADG	2.87
YW	962
365	
YR	

Ultrasound Data	
IMF	4.99/Actual
REA	11.4/Actual
Fat	0.21/Actual

An April son of Mc Cumber New Trend 1206, who is deep, thick and moderate framed. His dam is a powerful daughter of Mc Cumber Powertrain 1025 with abundant rib, natural thickness and a big, well designed hoof.



AngusSource enables producers to convey the valuable source, genetic and management information about their Angus-influenced commercial feeder calves and replacement heifers to prospective buyers.

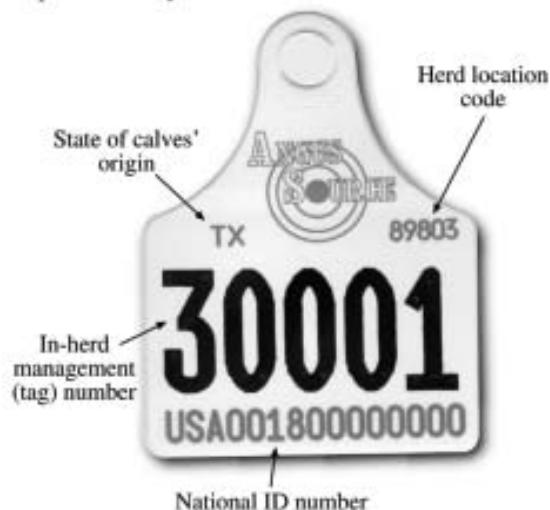
Step 1 Enroll in AngusSource via www.angussource.com or with a printed enrollment form (available by calling American Angus Association office).
THIS INFORMATION MUST BE SUBMITTED PRIOR TO FIRST TAG ORDER.

Step 2 Enroll cattle and order tags via www.angussource.com or by calling AAA office.
Allow 2 weeks for printing and delivery.
Enrollment fee: \$1 per tag

Step 3 Tag calves. Tags should only be used for calves whose sire or maternal grandsire is a registered Angus bull. Calves should be at least 50% Angus and tagged prior to shipping from farm or ranch of origin.

Step 4 Enter marketing information about the health, management and sale date/location.

Step 5 Market cattle through an auction, video or direct by using the printed AngusSource Marketing Document to convey the valuable information to potential buyers.



For more information, contact the AAA Commercial Programs Department at 816-383-5100 or angussource@angus.org.

McCumber Angus Ranch

Chuck Tastad Family • RR-1, Box-126 • Rolofs, ND 58366

Time Sensitive Material.
Please deliver by March 19, 2007

Address Service Requested



Mc Cumber 9802 Valubull 6100



Mc Cumber 4X13 Extra 6119



Mc Cumber 004 Traveler 6120



Mc Cumber 3116 VRD 685



Mc Cumber 383 Tradition 660



Mc Cumber 449 T Value 633



Mc Cumber 004 Traveler 630

Sale will be broadcast on RFD TV &
Online at www.superiorlivestock.com

For More Information, Contact:
Chuck (701)246-3366 Matt (701) 246-3847
E-mail: mccumber@utma.com

Web site: mccumberangus.com

